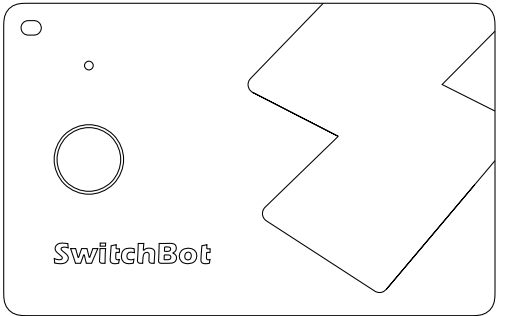
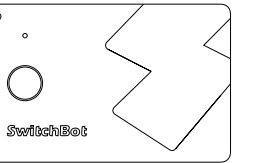


SwitchBot Wallet Finder Card

User Manual



Package Contents

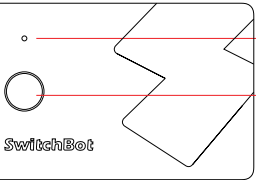


Wallet Finder Card × 1



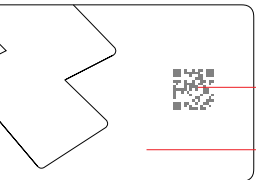
User Manual × 1

List of Components



Buzzer

Button



QR code

Lithium-ion Battery (built-in)

Preparation

You will need:

- A smartphone or tablet using Bluetooth 4.2 or later.
- The latest version of our app, downloadable via the Apple App Store or Google Play Store.
- A SwitchBot account, you can register via our app or sign in to your account directly if you already have one.



iOS 14.0+



Android OS 5.0+

Add your Wallet Finder Card to our app

Open our app and sign in to your account. Tap "+" located at the top right-hand corner of the home page, select "Add Device", find the Wallet Finder Card icon and select. Then follow the instructions to add your device.

Use with Apple's Find My app

- Open the Find My app, then click the "+" icon and select Add Other Item.
- Press and hold the button on your Wallet Finder Card for 2s until you hear the prompt tone.
- Name your Wallet Finder Card and then click Continue.
- Register the SwitchBot Wallet Finder Card with your Apple ID, and click Continue.
- Tap Finish. You can now attach the Wallet Finder Card to your item and track its location using the Find My app.

Locate your SwitchBot Wallet Finder Card

- You can use the Find My app to locate your Wallet Finder Card. When the device is within Bluetooth range, you can use the app to make the Wallet Finder Card emit a sound tone, helping you locate it easily.
- Alternatively, you can track the location of your Wallet Finder Card through our app. When the device is within Bluetooth range, our app can also make the Wallet Finder Card emit a sound tone, making it easier to locate.

Locate your phone, even in silent mode

- Activate Find My Phone in the SwitchBot app.
- Grant the SwitchBot app permission to access your location data at all times.
- Press the button on the Wallet Finder Card. If your phone is nearby, it will emit a sound to help you locate it.

Save your contact information on QR code

- Activate Lost Mode for your Wallet Finder Card using our app.
- Follow the prompts to input your contact information. This allows others to contact you by scanning the QR code on the card and return your belongings.

Disable Find My network

Press the button for 5 times and hold it for 10s. Your Wallet Finder Card will emit continuous beeps for 12 seconds, indicating that your card is hibernating.

Reset your Wallet Finder Card

Press the button for 5 times and hold it for 15s. Your Wallet Finder Card will emit three beeps, indicating that it has been successfully reset.

Perform serial number lookup

Open the Find My app, scroll to the bottom of the Items tab, then tap Identify Found Item.

Keep your Wallet Finder Card near your iPhone. Once your iPhone detects the Wallet Finder Card, it will appear in the list of found items. Select the Wallet Finder Card from the list to access its details page.

On the displayed page, you can connect to the card by following these steps:

- Press the button on the Wallet Finder Card twice. You will hear a confirmation sound indicating the connection.
- After successfully connecting to the Wallet Finder Card, tap Continue on Website.

On the website, you can view Lost Mode message left by the owner and check the card's serial number.

Anti-Tracking mode

- If someone uses a Wallet Finder Card to unlawfully track you or your belongings, you will receive alerts on your Apple device (iPhone or iPad running iOS version 14.5 or above) via the Find My app.
- The card that isn't with its owner for a period of time will emit a sound when it's moved.

NFC

This product supports Near Field Communication (NFC). If someone finds your lost item, they can tap the card with an NFC-enabled device to get your contact information. You can also add the card to your SwitchBot Keypad Touch to help you quickly unlock your door.

Reset your Wallet Finder Card

Press and hold the button on your Wallet Finder Card for 45s. Your device is successfully reset if you hear continuous beeps.

Wallet Finder Card connected to another Apple ID

- If you want to use a different Apple ID with your Wallet Finder Card, ensure that the card has been removed from the Find My app associated with the previous Apple ID.
- If you encounter this problem when you add the device for the first time, please contact us at support@switch-bot.com.

Specifications

Wallet Finder Card

Color: Black

Material: ABS + PC

Size: 85 x 54 x 2.35 mm (3.3 x 2.1 x 0.1 in.)

Weight: 12g (0.4 oz.)

Connectivity: BLE

Connectivity Range: 50 m without obstacles

Operating Temperature: -10° C to 45° C (14°F to 113°F)

Operating Humidity: 10% to 90% RH

Service Life: 3 years (battery non-detachable)

Power Supply: 540 mAh non-rechargeable lithium manganese battery cell

Water Resistance: IP67

System Requirements: iOS 14.0+, Android OS 5.0+

Warranty

We warrant to the original owner of the product that the product will be free from defects in materials and workmanship. Please note that this limited warranty does not cover:

1. Products submitted beyond the original limited warranty period.
2. Products on which repairs or modifying have been attempted.
3. Products subjected to falls, extreme temperatures, water, or other operating conditions outside the product specifications.
4. Damage due to natural disaster (including but not limited to lightning, flood, tornado, earthquake, or hurricane, etc.).
5. Damage due to misuse, abuse, negligence or casualty (e.g. fire).
6. Other damage that is not attributable to defects in the manufacture of product materials.
7. Products purchased from unauthorized resellers.
8. Consumable parts (including but not limited to batteries).
9. Natural wear of the product.

Contact & Support

Setup and Troubleshooting: support.switch-bot.com

Support Email: support@switch-bot.com

Feedback: If you have any concerns or problems when using our products, please send feedback via our app through the Profile > Help & Feedback page.

CE/UKCA Warning

RF exposure information: The EIRP power of the device at maximal case is below the exempt condition, 20mW specified in EN 62479: 2010. RF exposure assessment has been performed to prove that this unit will not generate the harmful EM emission above the reference level as specified in EC Council Recommendation(1999/519/EC).

CE DOC

Hereby, Woan Technology (Shenzhen) Co., Ltd. declares that the radio equipment type W2500032 is in compliance with Directive 2014/53/EU. The full text of the EU declaration of conformity is available at the following internet address: support.switch-bot.com

This product can be used in EU member states and UK.

Manufacturer: Woan Technology (Shenzhen) Co., Ltd.

Address: Room 1101, Qiancheng Commercial Center, No. 5 Haicheng Road, Mabu Community, Xixiang Subdistrict, Bao'an District, Shenzhen, Guangdong, P.R.China, 518100

CE representative: XDH Tech

Address: 2 Rue Coysevox Bureau 3, Lyon, France

Operation frequency (Max power)

NFC:13.56MHz(48dBuV/m@10m)

BLE:2402 MHz-2480MHz(3.7dBm)

Operation temperature: -10 °C to 45 °C (14 °F to 113 °F)

FCC Warning

This device complies with Part 15 of the FCC Rules. Operation is subject to the following two conditions:

- (1) This device may not cause harmful interference.
- (2) This device must accept any interference received, including interference that may cause undesired operation.

NOTE: This equipment has been tested and found to comply with the limits for a Class B digital device, pursuant to part 15 of the FCC Rules. These limits are designed to provide reasonable protection against harmful interference in a residential installation.

This equipment generates uses and can radiate radio frequency energy and, if not installed and used in accordance with the instructions, may cause harmful interference to radio communications. However, there is no guarantee that interference will not occur in a particular installation. If this equipment does cause harmful interference to radio or television reception, which can be determined by turning the equipment off and on, the user is encouraged to try to correct the interference by one or more of the following measures:

- Reorient or relocate the receiving antenna.
- Increase the separation between the equipment and receiver.
- Connect the equipment into an outlet on a circuit different from that to which the receiver is connected.
- Consult the dealer or an experienced radio/TV technician for help.

NOTE: The manufacturer is not responsible for any radio or TV interference caused by unauthorized modifications to this equipment. Such modifications could void the user's authority to operate the equipment.

The device has been evaluated to meet general RF exposure requirement. The device can be used in portable exposure condition without restriction.

IC Warning

This device contains license-exempt transmitter(s)/receiver(s) that comply with Innovation, Science and Economic Development Canada's license-exempt RSS(s). Operation is subject to the following two conditions:

- (1) This device may not cause interference.
- (2) This device must accept any interference, including interference that may cause undesired operation of the device.

L'émetteur/récepteur exempt de licence contenu dans le présent appareil est conforme aux CNR d'Innovation, Sciences et Développement économique Canada applicables aux appareils radio exempts de licence. L'exploitation est autorisée aux deux conditions suivantes :

- (1) L'appareil ne doit pas produire de brouillage;
- (2) L'appareil doit accepter tout brouillage radioélectrique subi, même si le brouillage est susceptible d'en compromettre le fonctionnement.

IC Radiation Exposure Statement

This equipment complies with the limits of exposure to IC radiation defined for an uncontrolled environment. Cet équipement est conforme aux limites d'exposition aux radiations de la IC définies pour un environnement non contrôlé.