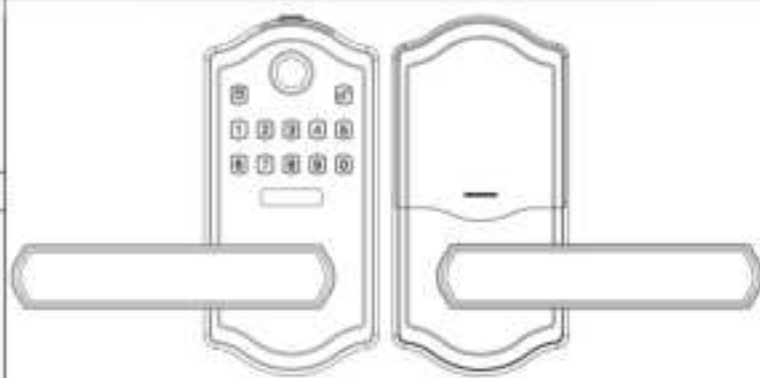
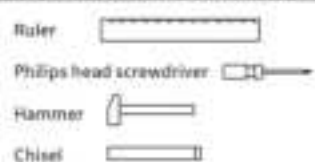


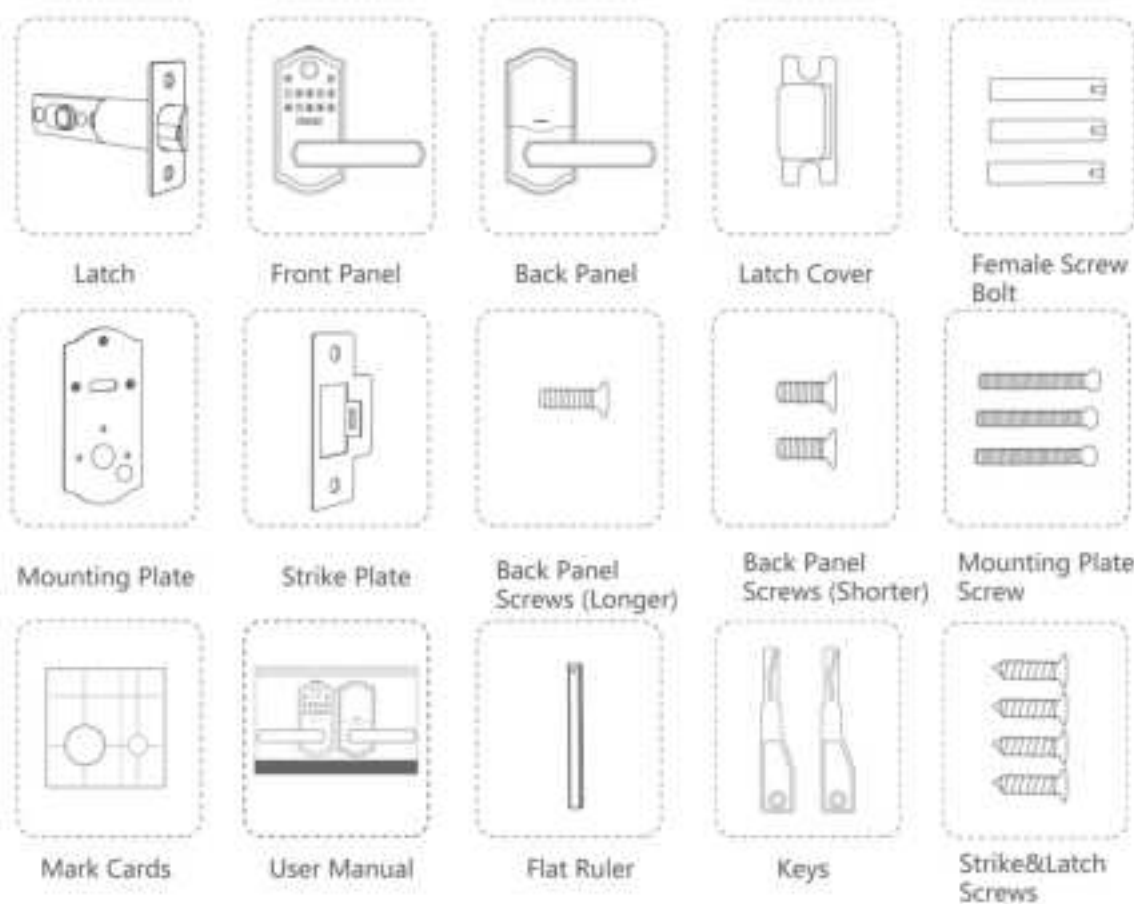
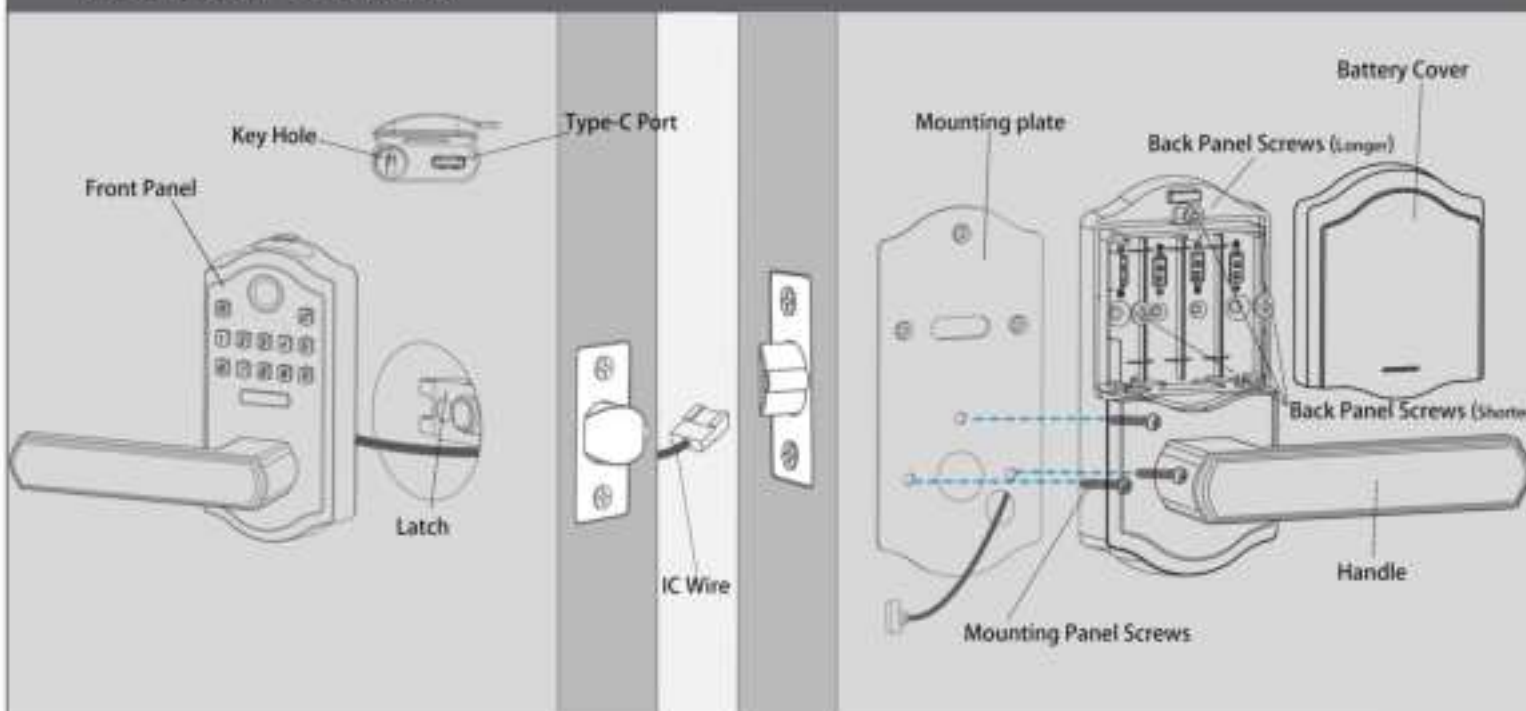
SMART DOOR LOCK

Installation and User Guide

Required tools (not included)



PRODUCT DETAILS



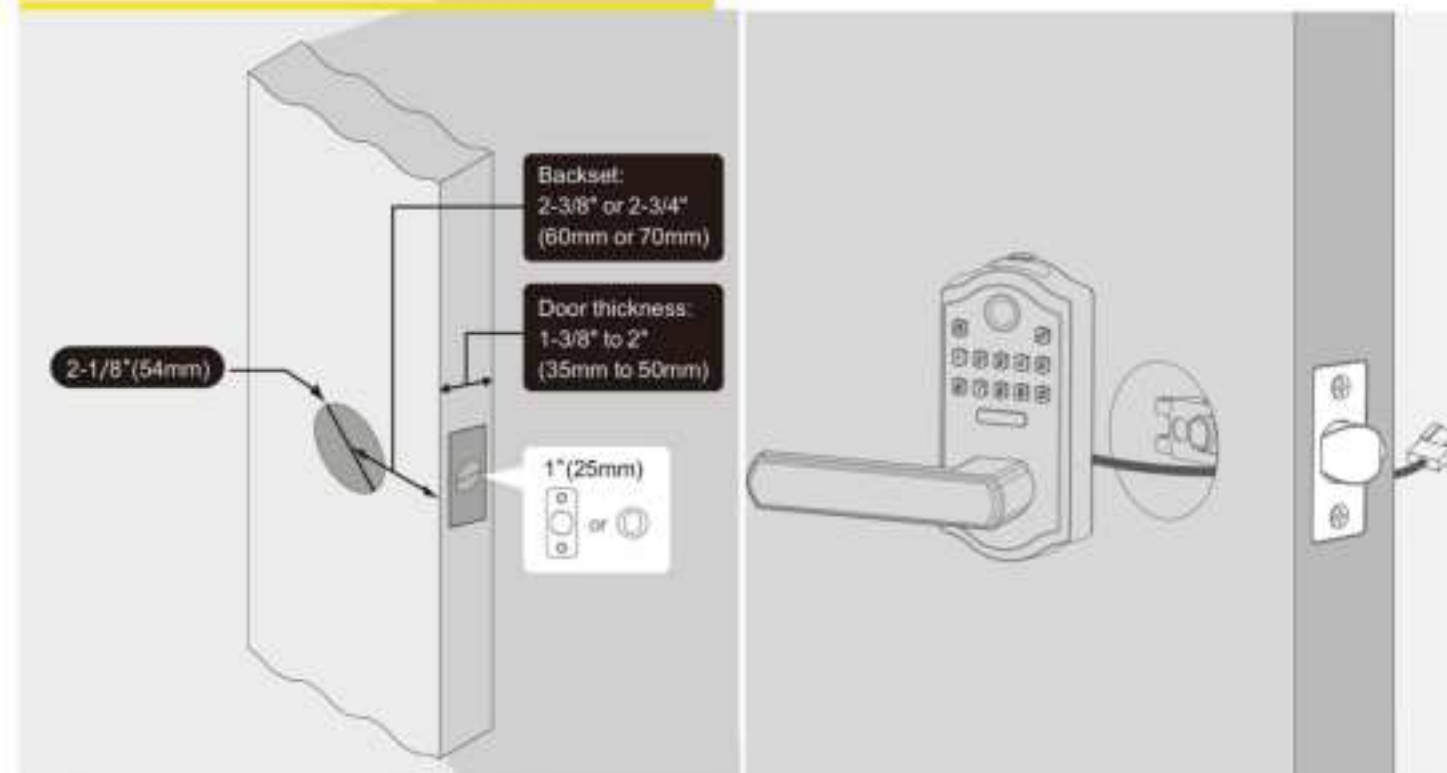
Installation instructions

Battery:

- Use new and NON-rechargeable *4 AA Alkaline batteries for the best use.
- Don't put on batteries until the lock is completely installed.

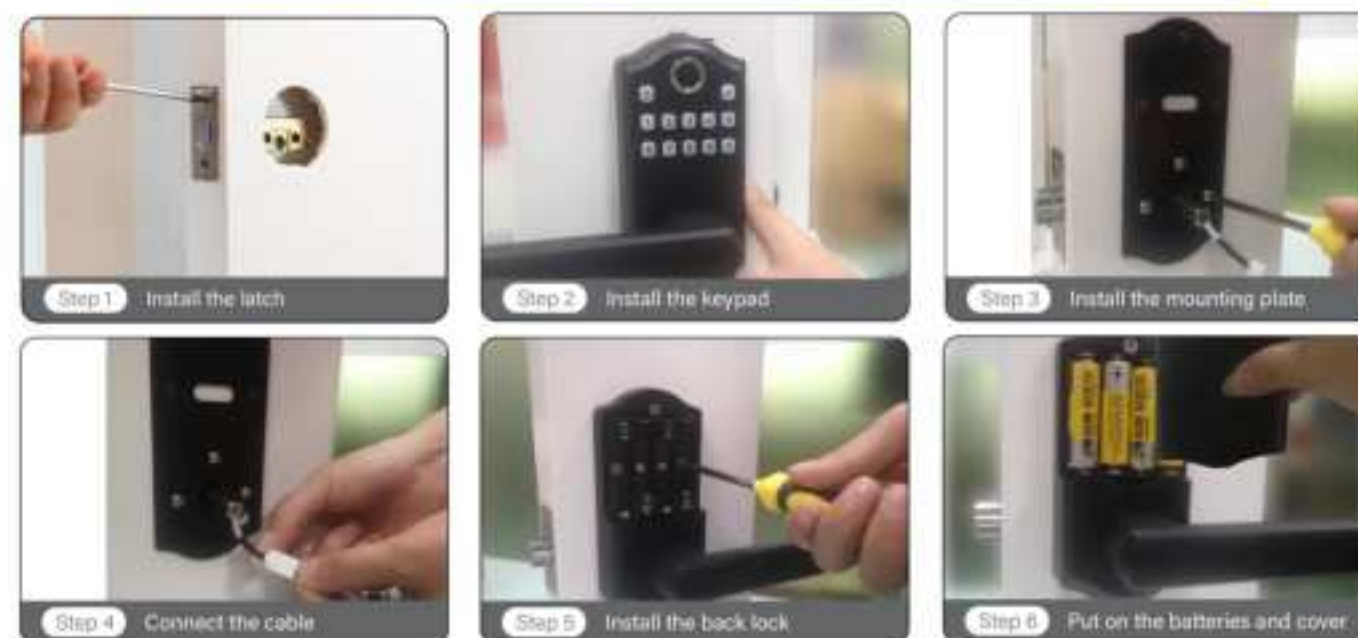
If you have any problems,don't hesitate to contact with us through message or email at the first time.

Before Installing the Lock, Please Check Door Jamb and Door Preparation.



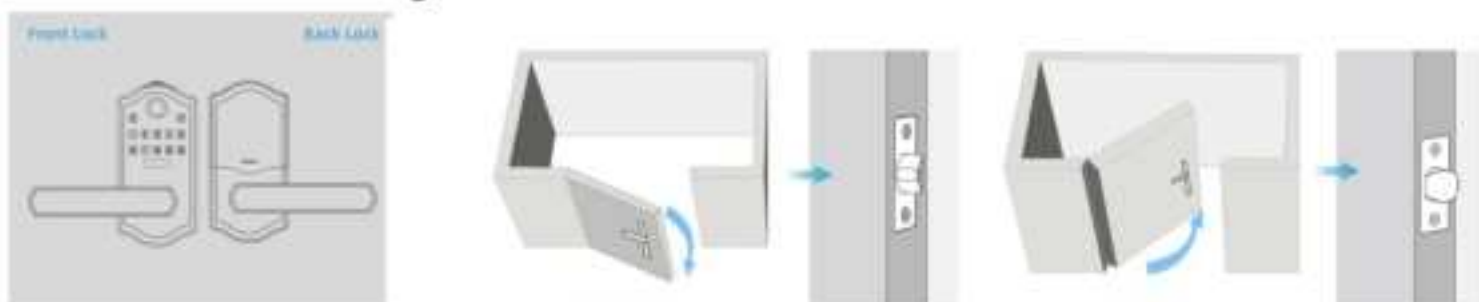
Simple flowchart of installation

Please refer to the next section if you need a more detailed installation process.

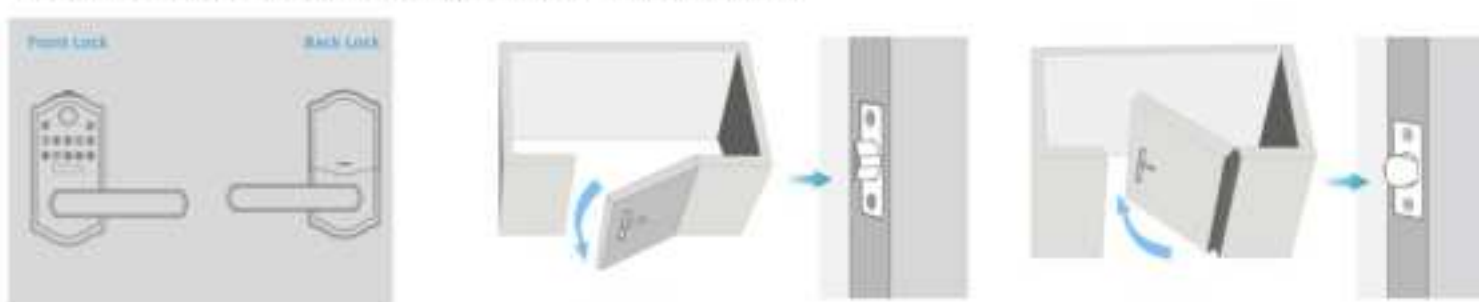


IDENTIFY LEFT/RIGHT HAND DOOR

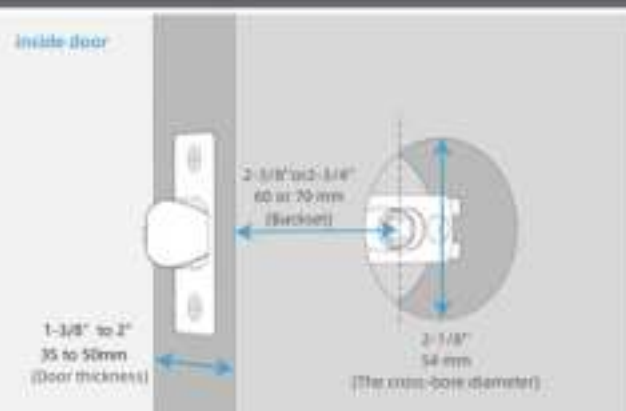
Left hand door:Hinge is on the LEFT



Right hand door:Hinge is on the RIGHT

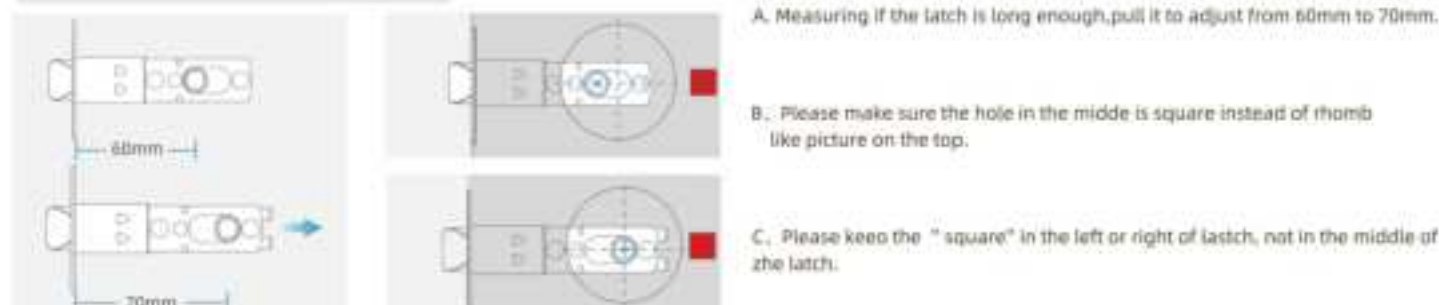


CHECK DOOR MEASUREMENTS



INSTALL THE LOCK

(1)Adjust the latch

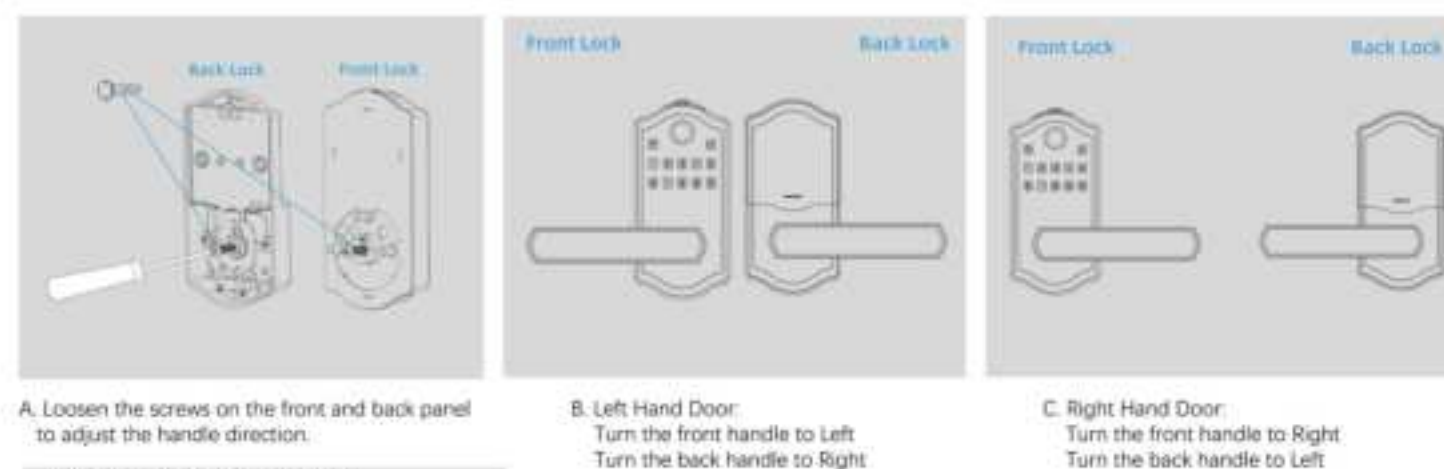


(2) Install the Latch and Strike Plate

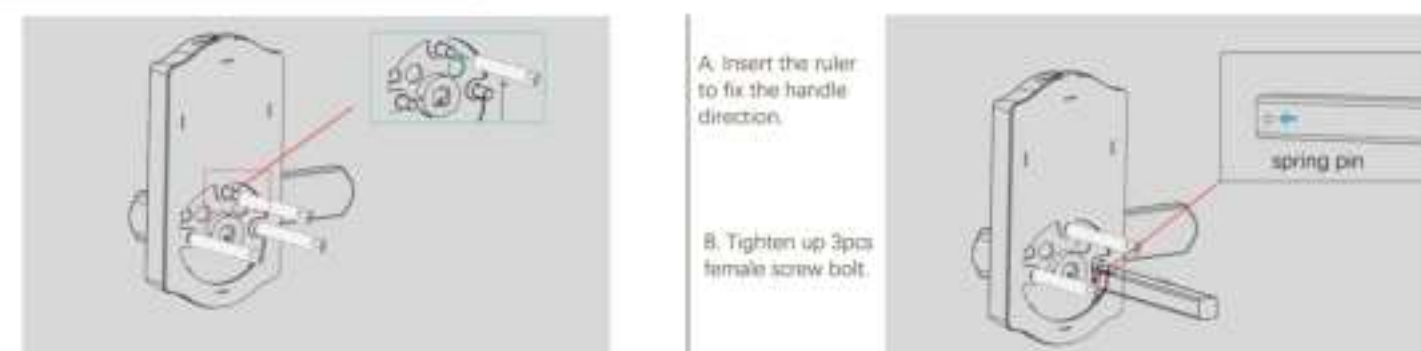


INSTALL THE LOCK

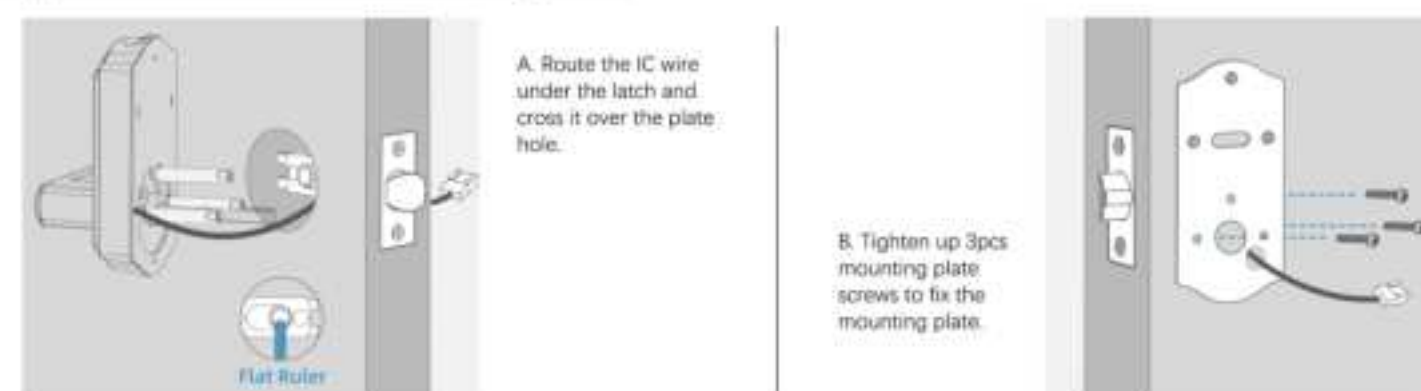
(3) Adjust the handle Direction



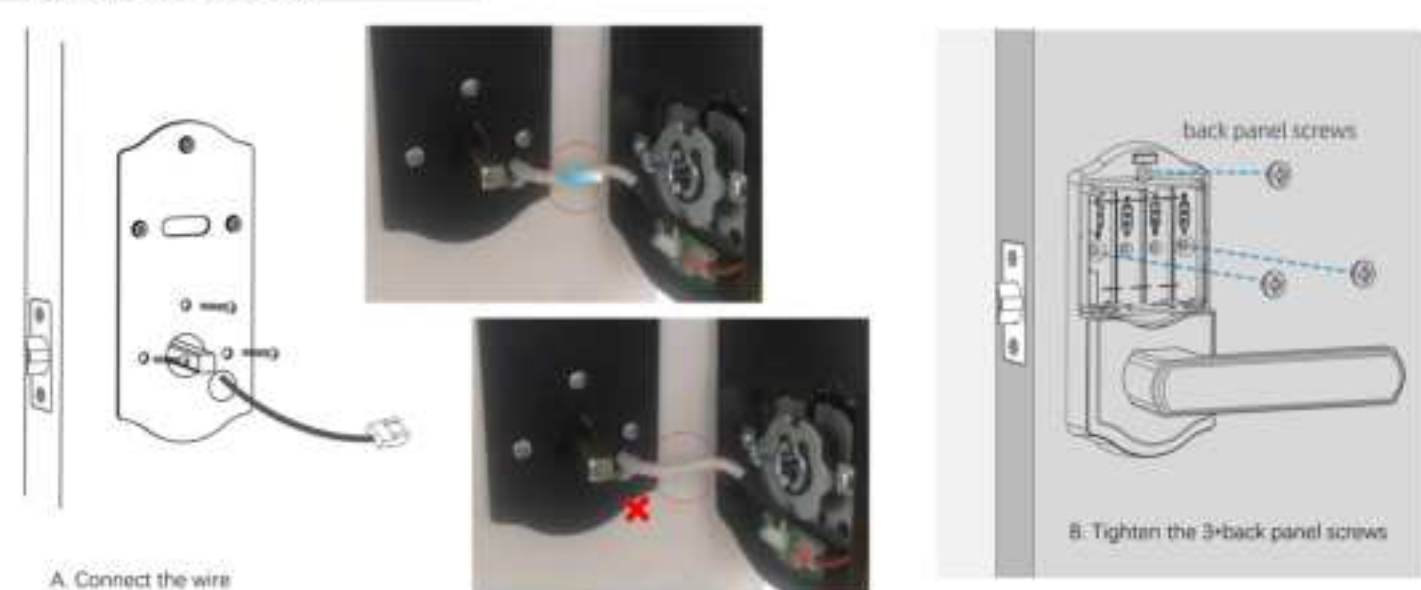
(4) Install the Front Panel



(5) Route the IC Wire&Install the Mounting Plate



(6) Install the Back Panel



TROUBLESHOOTING

• Installation

	Suggested Action
The handle is hard to rotate.	1.Take off the back panel and mounting panel. 2.Check if the IC wire is installed correctly.(Refer to the step "Install the back panel")
Fail to programming the lock	1.Before installation,restore the lock 2.Please make sure the lock is installed correctly. 3.Please install fresh batteries and make sure the cable is connected correctly.

• Operation

Question	Suggested Action
The keypad is keeping flashing .	The batteries are getting low.Please replace with 4•AA new batteries for the best performance(Alkaline batteries,do not use recharge batteries)
Keypad do not respond.	1.Check if the batteries are new. 2.Check if the IC wire is installed corectly.(refer to the step"Install the Back Panel")
Forgot master code/Default programming code is incorrect.	Press the reset button on the circuit board to erase all codes.Once the resetting work is complete,all passcodes will be erased and the progauimming code will return to the default programming code 123456.

★ Passage Mode : （ the passage mode can turn off automatic locking)

•This feature is optional and can be turned off.(Under auto-mode with lock unlocking, press 123+ 🔑 to set passage mode on,press 123+ 🔑 , green light flashes with voice prompt successful.)



Attention:
To keep it in passage mode, don't input password to unlock. Once password entered to unlock, passage mode will be turned off accordingly.

SETTING DEFINITIONS

Settings	Default Setting	Definitions
Programming Code	123456	<ul style="list-style-type: none">It's required to change it to a code of your own before programming.4 - 9 digits in length, Must be different from all other existed User Codes.If you forget the master passcode, you can reset the lock to factory settings, which restores the default programming code.
Auto Lock	Enabled	<ul style="list-style-type: none">This feature is optional and can be turned off.(Under auto-mode with lock unlocking, press 123+ 🔑 to set Passage Mode on.Press 123+ 🔑 , green light flashes for 0.5s with voice prompt successful.)When enabled,the lock will automatically re-lock after 5 seconds.
Manually Lock	Hold "🔑"	<ul style="list-style-type: none">If auto-lock is not set on, you need to do the locking manually.Passage mode can be released in auto lock mode.
Silent Mode	Disable	<ul style="list-style-type: none">The beep sounds when pressing keypad can be muted.
Wrong Code Entry Limit	Enabled	<ul style="list-style-type: none">Once the wrong passcode entry limits reach to 5 attempts and wrong fingerprint entry limits to 10 attempts, the lock will shutdown(RED light flashing) for sixty (60) seconds, and it will be released automatically.
Peek-proof digital keypad	Enabled	<ul style="list-style-type: none">Prevent code exposure to strangers by entering random digits. Max in 16 digital length. <div><div>000123456789</div><div> Password</div><div> Random digits</div></div>
User Code	Disable	<ul style="list-style-type: none">The lock comes out without any default User Codes.Must be different from the master code and other user codes.Up to 150 possible User Codes can be stored in the lock at one time.

Warranty

This manufacturer advises that no lock can provide complete security by itself,this lock maybe defeated by forcible or technicak means or evaded by entry elsewhere on the property,no lock can substitute for caution,awareness of your environment,and common sense.Builder's hardware is available in multiple perfoemance grades to suit the application. In order to enhance security and reduce risk,you should consult a qualified locksmith or other security professional.

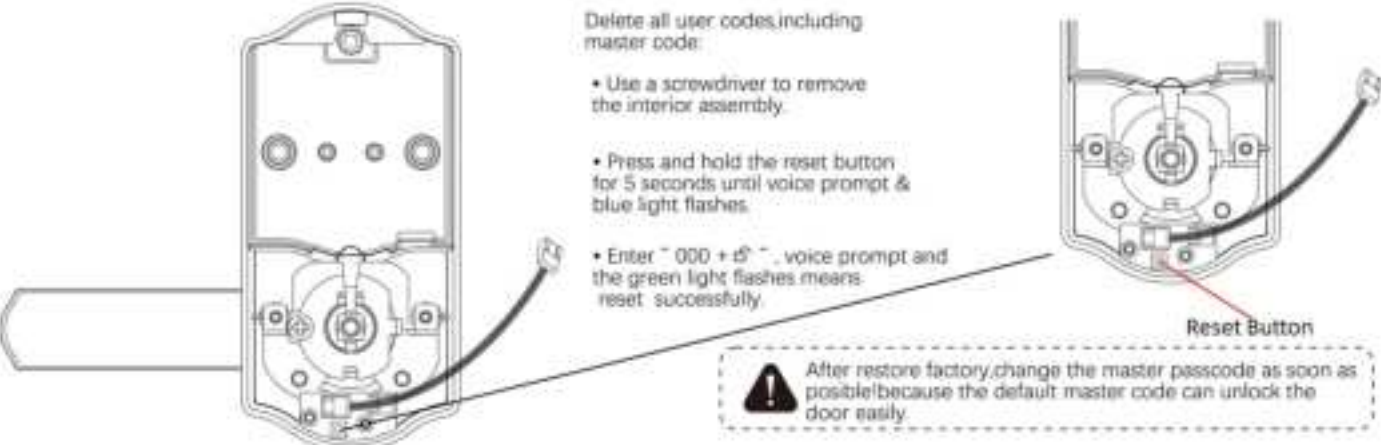
FEATURES

- Two ways to access:code and key .
- Low power consumption,4 AA batteries can work for 1 year or 50,00 times.
- Backlit keypad for use in low light environments.
- 1 programming code and 150 user codes.
- Built-in disguise feature to protest your codes from prying eyes max in 16 digital length.
- Low battery under(4.8V±0.1) warning indication.

INDICATOR LIGHT SIGNALS AND BEEP

- Green: A correct code was entered.
- Blue: Programming in progress,blue light flashes for 1s.
- Red:
 - An incorrect code was entered.
 - A Programming error.
 - low battery warning.

HOW TO RESET



FCC Caution.

This device complies with part 15 of the FCC Rules. Operation is subject to the following two conditions:
(1) This device may not cause harmful interference, and (2) this device must accept any interference received, including interference that may cause undesired operation.

Any Changes or modifications not expressly approved by the party responsible for compliance could void the user's authority to operate the equipment.

Note: This equipment has been tested and found to comply with the limits for a Class B digital device, pursuant to part 15 of the FCC Rules. These limits are designed to provide reasonable protection against harmful interference in a residential installation. This equipment generates uses and can radiate radio frequency energy and, if not installed and used in accordance with the instructions, may cause harmful interference to radio communications. However, there is no guarantee that interference will not occur in a particular installation. If this equipment does cause harmful interference to radio or television reception, which can be determined by turning the equipment off and on, the user is encouraged to try to correct the interference by one or more of the following measures:

- Reorient or relocate the receiving antenna.
- increase the separation between the equipment and receiver.
- Connect the equipment into an outlet on a circuit different from that to which the receiver is connected.
- Consult the dealer or an experienced radio/TV technician for help.

This equipment complies with FCC radiation exposure limits set forth for an uncontrolled environment. This equipment should be installed and operated with minimum distance 20cm between the radiator & your body.

QUICK SET

Quick Set: The default programming code is "123456". It's required that you change it to a code of your own before programming.

1.Recommend you hit the small reset button the circuit board before assembling the unit to the bracket.

⚠ Programming Code=PC User Code=UC

🔑 click+number to entry the programming mode.

★ Add Programming Code

🔑 + 1 + 🔑 → PC + 🔑 → New PC + 🔑 → New PC + 🔑

Remark:Programming Code should be 4-9 digits in length.And you need to enter the new password again to confirm.

Add New User Code

🔑 + 2 + 🔑 → PC + 🔑 → 1 → New UC + 🔑 → New UC + 🔑

Remark:User Code should be 4-9 digits in length.And you need to enter the new password again to confirm.

Delete User Code

🔑 + 2 + 🔑 → PC + 🔑 → 2 → 2 (all) + 🔑

1 (single) → User Code + 🔑

Volume setting

🔑 + 3 + 🔑 → PC + 🔑 → 1 → 1 (increase) / 2 (decrease)

★ Auto-lock on or Auto lock off

🔑 + 3 + 🔑 → PC + 🔑 → 2 → 1 (on) / 2 (off) → Set Time Delay

Time delay setting:press 1 for 5s,2 for 10s,3 for 20s,4 for 30s,5 for 60s.

Language setting

🔑 + 3 + 🔑 → PC + 🔑 → 3 → 1 (English) / 2 (Chinese) / 3 (Portuguese) / 4 (Spanish)

Add One- Time Code

🔑 + 81 + 🔑 → PC + 🔑 → New UC + 🔑 → New UC + 🔑

Remark:User Code should be 4-9 digits in length.And you need to enter the new password again to confirm.

Initialization setting

🔑 + 4 + 🔑 → PC + 🔑 → 1 (cancel) + 🔑 / 2 (confirm) + 🔑