



Shenzhen CTL Testing Technology Co., Ltd.  
Tel: +86-755-89486194 E-mail: ctl@ctl-lab.com

# TEST REPORT

## FCC PART 15.247

Report Reference No.: CTL2412133013-WF01

Compiled by:  
( position+printed name+signature)

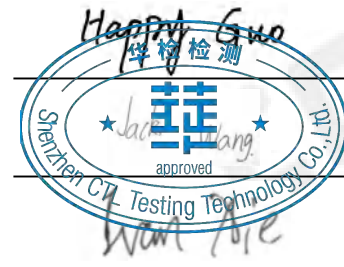
Happy Guo  
(File administrators)

Tested by:  
( position+printed name+signature)

Jack Wang  
(Test Engineer)

Approved by:  
( position+printed name+signature)

Ivan Xie  
(Manager)



Product Name: Oclean X Pro 20 WiFi Smart Sonic Electric Toothbrush

Model/Type reference: N1804

List Model(s): N/A

Trade Mark: Oclean

FCC ID: 2AN5D-N1804

Applicant's name: Shenzhen Yunding Information Technology Co., Ltd.

Address of applicant: 28G,Building 3,Dachong Business Center (phase III) No.18  
Dachong 1st Road, Dachong Community, Yuehai Street,Nanshan  
District, Shenzhen, Guangdong

Test Firm: Shenzhen CTL Testing Technology Co., Ltd.

Address of Test Firm: Floor 1-A, Baisha Technology Park, No.3011, Shahexi Road,  
Nanshan District, Shenzhen, China 518055

Test specification:

Standard: FCC Part 15.247: Operation within the bands 902-928 MHz,  
2400-2483.5 MHz and 5725-5850 MHz.

TRF Originator: Shenzhen CTL Testing Technology Co., Ltd.

Master TRF: Dated 2011-01

Date of receipt of test item: Jan. 14, 2025

Date of Test Date: Jan. 15, 2025 - Feb. 20, 2025

Date of Issue: Feb. 25, 2025

Result: Pass

Shenzhen CTL Testing Technology Co., Ltd. All rights reserved.

This publication may be reproduced in whole or in part for non-commercial purposes as long as the Shenzhen CTL Testing Technology Co., Ltd. is acknowledged as copyright owner and source of the material. Shenzhen CTL Testing Technology Co., Ltd. takes no responsibility for and will not assume liability for damages resulting from the reader's interpretation of the reproduced material due to its placement and context.

# TEST REPORT

<b>Test Report No. :</b> CTL2412133013-WF01	Feb. 25, 2025 Date of issue
---	--------------------------------

Equipment under Test : Oclean X Pro 20 WiFi Smart Sonic Electric Toothbrush

Sample No : CTL2412133013

Model /Type : N1804

Listed Models : N/A

**Applicant** : **Shenzhen Yunding Information Technology Co., Ltd.**

**Address** : 28G,Building 3,Dachong Business Center (phase III)  
No.18 Dachong 1st Road, Dachong Community, Yuehai  
Street,Nanshan District, Shenzhen, Guangdong

**Manufacturer** : **Shenzhen Yunding Information Technology Co., Ltd.**

**Address** : 28G,Building 3,Dachong Business Center (phase III)  
No.18 Dachong 1st Road, Dachong Community, Yuehai  
Street,Nanshan District, Shenzhen, Guangdong

<b>Test result</b>	<b>Pass *</b>
--------------------	---------------

\* In the configuration tested, the EUT complied with the standards specified page 5.

The test results presented in this report relate only to the object tested.

This report shall not be reproduced, except in full, without the written approval of the issuing testing laboratory.

### **\*\* Modified History \*\***

[illegible]

**Table of Contents****Page**

<b>1. SUMMARY .....</b>	<b>5</b>
1.1. TEST STANDARDS .....	5
1.2. TEST DESCRIPTION .....	5
1.3. TEST FACILITY .....	6
1.4. STATEMENT OF THE MEASUREMENT UNCERTAINTY .....	6
1.5. AUXILIARY TEST EQUIPMENT INFORMATION .....	7
<b>2. GENERAL INFORMATION .....</b>	<b>8</b>
2.1. ENVIRONMENTAL CONDITIONS .....	8
2.2. GENERAL DESCRIPTION OF EUT .....	8
2.3. DESCRIPTION OF TEST MODES AND TEST FREQUENCY .....	9
2.4. EQUIPMENTS USED DURING THE TEST .....	10
2.5. RELATED SUBMITTAL(s) / GRANT (s) .....	11
2.6. MODIFICATIONS .....	11
<b>3. TEST CONDITIONS AND RESULTS .....</b>	<b>12</b>
3.1. CONDUCTED EMISSIONS TEST .....	12
3.2. RADIATED EMISSIONS AND BAND EDGE .....	15
3.3. MAXIMUM CONDUCTED OUTPUT POWER .....	29
3.4. POWER SPECTRAL DENSITY .....	30
3.5. 6DB BANDWIDTH .....	31
3.6. OUT-OF-BAND EMISSIONS .....	32
3.7. ANTENNA REQUIREMENT .....	33
<b>4. TEST SETUP PHOTOS OF THE EUT .....</b>	<b>33</b>
<b>5. PHOTOS OF THE EUT .....</b>	<b>36</b>

# 1. SUMMARY

## 1.1. TEST STANDARDS

The tests were performed according to following standards:

[FCC Rules Part 15.247](#): Frequency Hopping, Direct Spread Spectrum and Hybrid Systems that are in operation within the bands of 902-928 MHz, 2400-2483.5 MHz, and 5725-5850 MHz

[ANSI C63.10: 2013](#): American National Standard for Testing Unlicensed Wireless Devices

[KDB 558074 D01 v05r02](#): KDB558074 D01 15.247 Meas Guidance v05r02

## 1.2. Test Description

FCC PART 15.247		
FCC Part 15.207	AC Power Conducted Emission	PASS
FCC Part 15.247(a)(2)	6dB Bandwidth	PASS
FCC Part 15.247(d)	Spurious RF Conducted Emission	PASS
FCC Part 15.247(b)	Maximum Conducted Output Power	PASS
FCC Part 15.247(e)	Power Spectral Density	PASS
FCC Part 15.109/ 15.205/ 15.209	Radiated Emissions	PASS
FCC Part 15.247(d)	Band Edge	PASS
FCC Part 15.203/15.247 (b)	Antenna Requirement	PASS

### 1.3. Test Facility

#### 1.3.1 Address of the test laboratory

Shenzhen CTL Testing Technology Co., Ltd.

Floor 1-A, Baisha Technology Park, No.3011, Shahexi Road, Nanshan District, Shenzhen, China 518055

There is one 3m semi-anechoic chamber and two line conducted labs for final test. The Test Sites meet the requirements in documents ANSI C63.10 and CISPR 32/EN 55032 requirements.

#### 1.3.2 Laboratory accreditation

The test facility is recognized, certified, or accredited by the following organizations:

##### **CNAS-Lab Code: L7497**

Shenzhen CTL Testing Technology Co., Ltd. has been assessed and proved to be in compliance with CNAS-CL01 Accreditation Criteria for Testing and Calibration Laboratories (identical to ISO/IEC 17025: 2017 General Requirements) for the Competence of Testing and Calibration Laboratories.

##### **A2LA-Lab Cert. No. 4343.01**

Shenzhen CTL Testing Technology Co., Ltd, EMC Laboratory has been accredited by A2LA for technical competence in the field of electrical testing, and proved to be in compliance with ISO/IEC 17025: 2017 General Requirements for the Competence of Testing and Calibration Laboratories and any additional program requirements in the identified field of testing.

##### **IC Registration No.: 9618B**

##### **CAB identifier: CN0041**

The 3m alternate test site of Shenzhen CTL Testing Technology Co., Ltd. EMC Laboratory has been registered by Innovation, Science and Economic Development Canada to test to Canadian radio equipment requirements with Registration No.: 9618B on Jan. 22, 2019.

##### **FCC-Registration No.: 399832**

##### **Designation No.: CN1216**

Shenzhen CTL Testing Technology Co., Ltd. EMC Laboratory has been registered and fully described in a report filed with the (FCC) Federal Communications Commission. The acceptance letter from the FCC is maintained in our files. Registration 399832, December 08, 2017.

### 1.4. Statement of the measurement uncertainty

The data and results referenced in this document are true and accurate. The reader is cautioned that there may be errors within the calibration limits of the equipment and facilities. The measurement uncertainty was calculated for all measurements listed in this test report acc. to CISPR 16 - 4 "Specification for radio disturbance and immunity measuring apparatus and methods – Part 4: Uncertainty in EMC Measurements" and is documented in the Shenzhen CTL Testing Technology Co., Ltd. quality system acc. to DIN EN ISO/IEC 17025. Furthermore, component and process variability of devices similar to that tested may result in additional deviation. The manufacturer has the sole responsibility of continued compliance of the device.

Hereafter the best measurement capability for CTL laboratory is reported:

Test	Measurement Uncertainty	Notes
Transmitter power Radiated	±2.20 dB	(1)
Radiated Emission 9KHz~30MHz	±3.66dB	(1)
Radiated Emission 30~1000MHz	±4.10dB	(1)
Radiated Emission Above 1GHz	±4.32dB	(1)
DTS Bandwidth	±1.9%	(1)
Maximum Conducted Output Power	± 1.18 dB	(1)

Maximum Power Spectral Density Level	$\pm 0.98$ dB	(1)
Band-edge	$\pm 1.21$ dB	(1)
Unwanted Emissions In Non-restricted Freq Bands	9kHz-7GHz: $\pm 1.09$ dB 7GHz-26.5GHz: $\pm 3.27$ dB	(1)

(1) This uncertainty represents an expanded uncertainty expressed at approximately the 95% confidence level using a coverage factor of  $k=1.96$ .

### 1.5. Auxiliary test equipment information

Manufacturer	Description	Model	Serial Number
Huawei	SuperCharge	HW-100225C00	HC78E2N4121901

## 2. GENERAL INFORMATION

### 2.1. Environmental conditions

During the measurement the environmental conditions were within the listed ranges:

Normal Temperature:	25°C
Relative Humidity:	55 %
Air Pressure:	101 kPa

### 2.2. General Description of EUT

Product Name:	Oclean X Pro 20 WiFi Smart Sonic Electric Toothbrush
Model/Type reference:	N1804
Power supply:	DC 3.7V from battery
<b>Bluetooth LE</b>	
Supported type:	Bluetooth Low Energy
Modulation:	GFSK
Operation frequency:	2402MHz to 2480MHz
Channel number:	40
Channel separation:	2MHz
Antenna type:	PCB Antenna
Antenna gain:	-3.35dBi

Note1: For more details, please refer to the user's manual of the EUT.

Note2: Antenna gain provided by the applicant.



## 2.3. Description of Test Modes and Test Frequency

The Applicant provides communication tools software to control the EUT for staying in continuous transmitting (Duty Cycle more than 98%) and receiving mode for testing.

There are 40 channels provided to the EUT and Channel 00/19/39 were selected for BLE test.

Test Modes	BLE 1M Continuous Transmitting	BLE 2M Continuous Transmitting
1	■	
2		■

### Operation Frequency List :

Channel	Frequency (MHz)
<b>00</b>	<b>2402</b>
02	2404
03	2406
⋮	⋮
<b>19</b>	<b>2440</b>
⋮	⋮
37	2476
38	2478
<b>39</b>	<b>2480</b>

Note: The line display in grey were the channel selected for testing

## 2.4. Equipments Used during the Test

Conducted Emission						
Item	Test Equipment	Manufacturer	Model No.	Serial No.	Last Cal.	Cal.Due
	EMI Test Receiver	ROHDE & SCHWARZ	ESCI	1166.5950.03	2024/04/30	2025/04/29
	LISN	R&S	ESH2-Z5	860014/010	2024/04/30	2025/04/29
	Limitator	ROHDE & SCHWARZ	ESH3-Z2	100408	2024/04/30	2025/04/29
Software:						
Name of Software:				Version:		
ES-K1				V1.71		

Radiated Emissions and Band Edge					
Test Equipment	Manufacturer	Model No.	Serial No.	Calibration Date	Calibration Due Date
Active Loop Antenna	Da Ze	ZN30900A	/	2024/04/30	2025/04/29
Double cone logarithmic antenna	Schwarzbeck	VULB 9168	824	2023/02/13	2026/02/12
Horn Antenna	Sunol Sciences Corp.	DRH-118	A062013	2024/11/25	2027/11/24
Horn Antenna	Ocean Microwave	OBH1004 00	26999002	2024/12/21	2027/12/20
Amplifier	Agilent	8449B	3008A02306	2024/04/30	2025/04/29
Amplifier	Brief&Smart	LNA-4018	2104197	2024/05/03	2025/05/02
EMI Test Receiver	R&S	ESCI	1166.5950.03	2024/04/30	2025/04/29
Spectrum Analyzer	Keysight	N9020A	MY53420874	2024/05/01	2025/04/30
Test software					
Name of Software			Version		
EZ_EMG(Below 1GHz)			V1.1.4.2		
EZ_EMG(Above 1GHz)			V1.1.4.2		

Maximum Peak Output Power & 20dB Bandwidth & Frequency Separation & Number of hopping frequency & Dwell Time & Out-of-band Emissions					
Test Equipment	Manufacturer	Model No.	Serial No.	Calibration Date	Calibration Due Date
Spectrum Analyzer	Keysight	N9020A	MY53420874	2024/05/01	2025/04/30
Temperature/Humidity Meter	Ji Yu	MC501	/	2024/05/04	2025/05/03
Test Software					
Name of Software			Version		
TST-PASS			V2.0		

## **2.5. Related Submittal(s) / Grant (s)**

This submittal(s) (test report) is intended to comply with Section 15.247 of the FCC Part 15, Subpart C Rules.

## **2.6. Modifications**

No modifications were implemented to meet testing criteria.

### 3. TEST CONDITIONS AND RESULTS

#### 3.1. Conducted Emissions Test

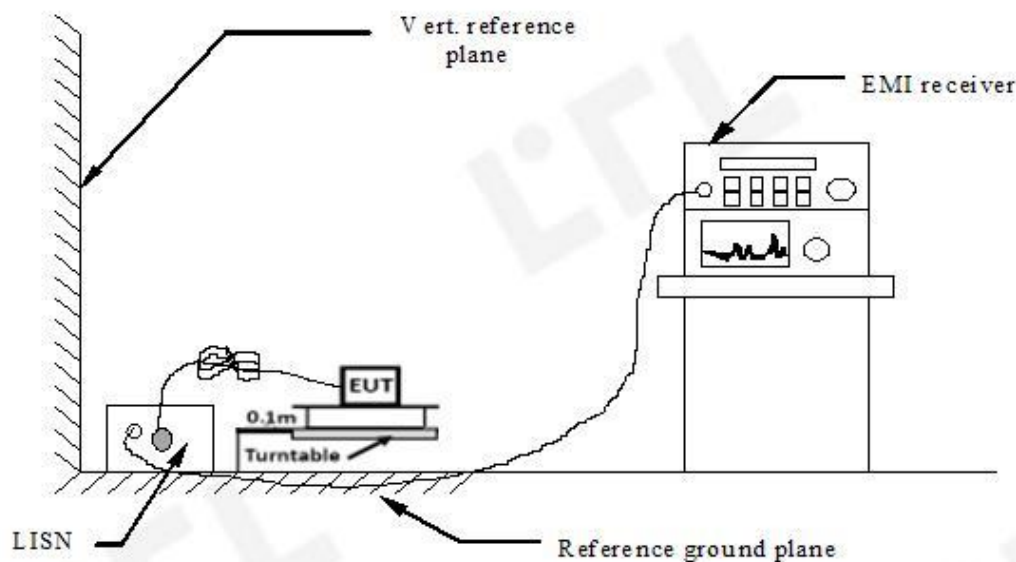
##### LIMIT

FCC CFR Title 47 Part 15 Subpart C Section 15.207

Frequency range (MHz)	Limit (dBuV)	
	Quasi-peak	Average
0.15-0.5	66 to 56*	56 to 46*
0.5-5	56	46
5-30	60	50

\* Decreases with the logarithm of the frequency.

##### TEST CONFIGURATION



##### TEST PROCEDURE

1. The equipment was set up as per the test configuration to simulate typical actual usage per the user's manual. The EUT is a floor type; a wooden table with a height of 0.1 meters is used and is placed on the ground plane as per ANSI C63.10:2013.
2. Support equipment, if needed, was placed as per ANSI C63.10:2013.
3. All I/O cables were positioned to simulate typical actual usage as per ANSI C63.10:2013.
4. The adapter received AC120V/60Hz power through a Line Impedance Stabilization Network (LISN) which supplied power source and was grounded to the ground plane.
5. All support equipments received AC power from a second LISN, if any.
6. The EUT test program was started. Emissions were measured on each current carrying line of the EUT using a spectrum Analyzer / Receiver connected to the LISN powering the EUT. The LISN has two monitoring points: Line 1 (Hot Side) and Line 2 (Neutral Side). Two scans were taken: one with Line 1 connected to Analyzer / Receiver and Line 2 connected to a 50 ohm load; the second scan had Line 1 connected to a 50 ohm load and Line 2 connected to the Analyzer / Receiver.
7. Analyzer / Receiver scanned from 150 KHz to 30MHz for emissions in each of the test modes.
8. During the above scans, the emissions were maximized by cable manipulation.

TEST RESULTS

Remark: All modes were test at , only the worst result of Test mode 2 was reported as below:

Line:

L

Shenzhen CTL Testing Technology Co., Ltd.

Voltage Mains Test FCC PART 15 C

EUT: N1804

Manufacturer: Shenzhen Yunding Information Technology Co.,Ltd

Operating Condition: BLE2M 2402MHz

Test Site:

Operator: WSX

Test Specification: AC 120V/60Hz

Comment: /

Start of Test: 2/18/2025 / 3:34:22PM

SCAN TABLE: "Voltage (9K-30M)FIN"

Short Description: 150K-30M Voltage

Level [dBuV]

Frequency [Hz]

\* X \*MES CTL250217238\_fin

MEASUREMENT RESULT: "CTL250217238\_fin"

2/18/2025 3:36PM

Frequency MHz	Level dBuV	Transd dB	Limit dBuV	Margin dB	Detector	Line	PE
0.150000	41.80	10.0	66	24.2	QP	L1	GND
0.249000	37.10	10.0	62	24.7	QP	L1	GND
0.294000	36.50	10.0	60	23.9	QP	L1	GND
0.303000	36.30	10.0	60	23.9	QP	L1	GND
0.465000	29.50	10.0	57	27.1	QP	L1	GND
0.649500	37.40	10.0	56	18.6	QP	L1	GND

MEASUREMENT RESULT: "CTL250217238\_fin2"

2/18/2025 3:36PM

Frequency MHz	Level dBuV	Transd dB	Limit dBuV	Margin dB	Detector	Line	PE
0.150000	22.10	10.0	56	33.9	AV	L1	GND
0.285000	16.20	10.0	51	34.8	AV	L1	GND
0.618000	23.30	10.0	46	22.7	AV	L1	GND
1.495500	14.50	10.1	46	31.5	AV	L1	GND
2.112000	14.30	10.1	46	31.7	AV	L1	GND
2.539500	14.60	10.1	46	31.4	AV	L1	GND

Line:

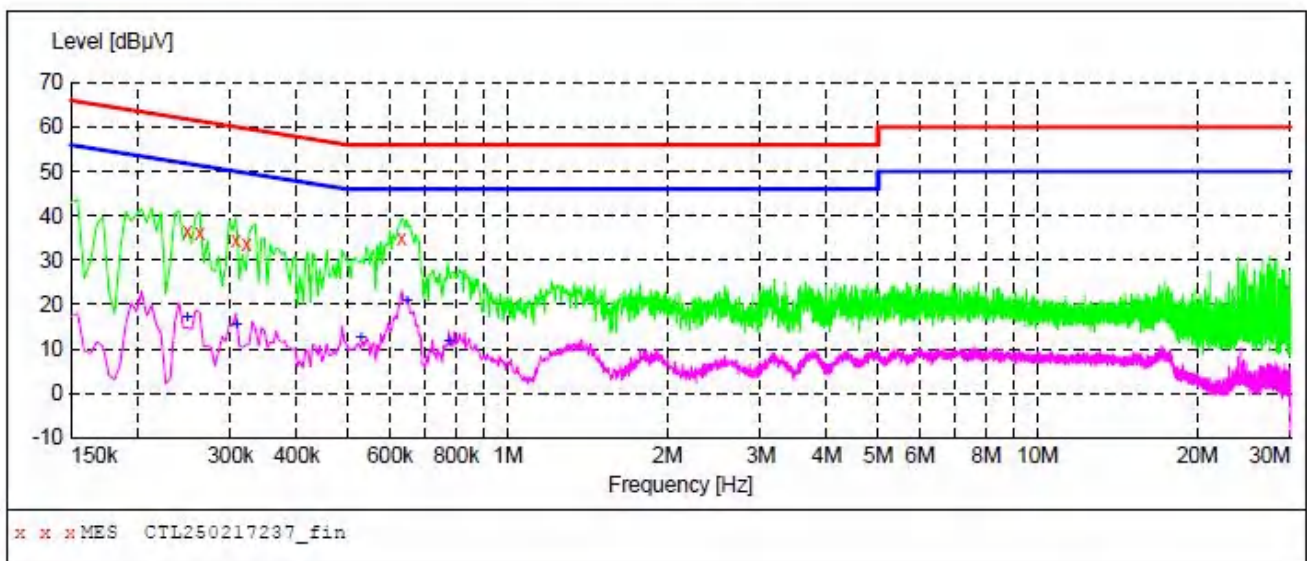
N

**Shenzhen CTL Testing Technology Co., Ltd.****Voltage Mains Test FCC PART 15 C**

EUT: N1804  
Manufacturer: Shenzhen Yunding Information Technology Co.,Ltd  
Operating Condition: BLE2M 2402MHz  
Test Site:  
Operator: WSX  
Test Specification: AC 120V/60Hz  
Comment: /  
Start of Test: 2/18/2025 / 3:31:44PM

**SCAN TABLE: "Voltage (9K-30M)FIN"**

Short Description: 150K-30M Voltage

**MEASUREMENT RESULT: "CTL250217237\_fin"**

2/18/2025 3:33PM

Frequency MHz	Level dBuV	Transd dB	Limit dBuV	Margin dB	Detector	Line	PE
0.249000	36.50	10.0	62	25.3	QP	N	GND
0.262500	36.00	10.0	61	25.4	QP	N	GND
0.307500	34.60	10.0	60	25.4	QP	N	GND
0.321000	33.60	10.0	60	26.1	QP	N	GND
0.631500	35.00	10.0	56	21.0	QP	N	GND

**MEASUREMENT RESULT: "CTL250217237\_fin2"**

2/18/2025 3:33PM

Frequency MHz	Level dBuV	Transd dB	Limit dBuV	Margin dB	Detector	Line	PE
0.249000	17.20	10.0	52	34.6	AV	N	GND
0.307500	15.50	10.0	50	34.5	AV	N	GND
0.528000	12.50	10.0	46	33.5	AV	N	GND
0.645000	21.00	10.0	46	25.0	AV	N	GND
0.775500	11.50	10.0	46	34.5	AV	N	GND



### 3.2. Radiated Emissions and Band Edge

#### Limit

For intentional device, according to § 15.209(a), the general requirement of field strength of radiated emission out of authorized band shall not exceed the following table at a 3 meters measurement distance.

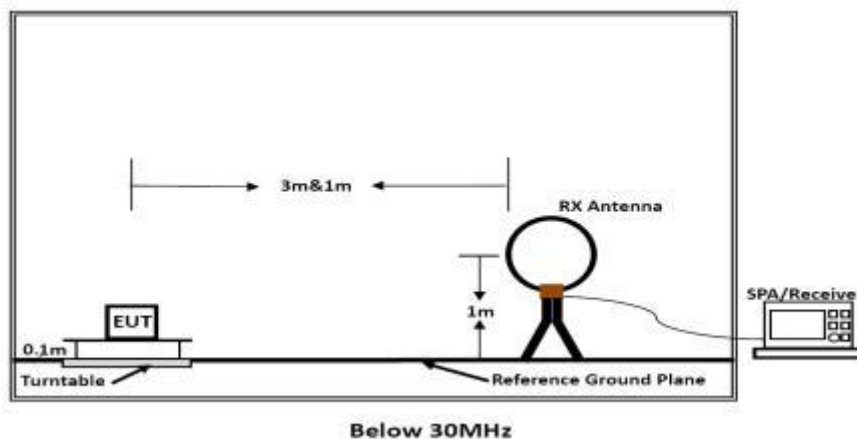
In addition, radiated emissions which fall in the restricted bands, as defined in §15.205(a), must also comply with the radiated emission limits specified in §15.209(a)

Radiated emission limits

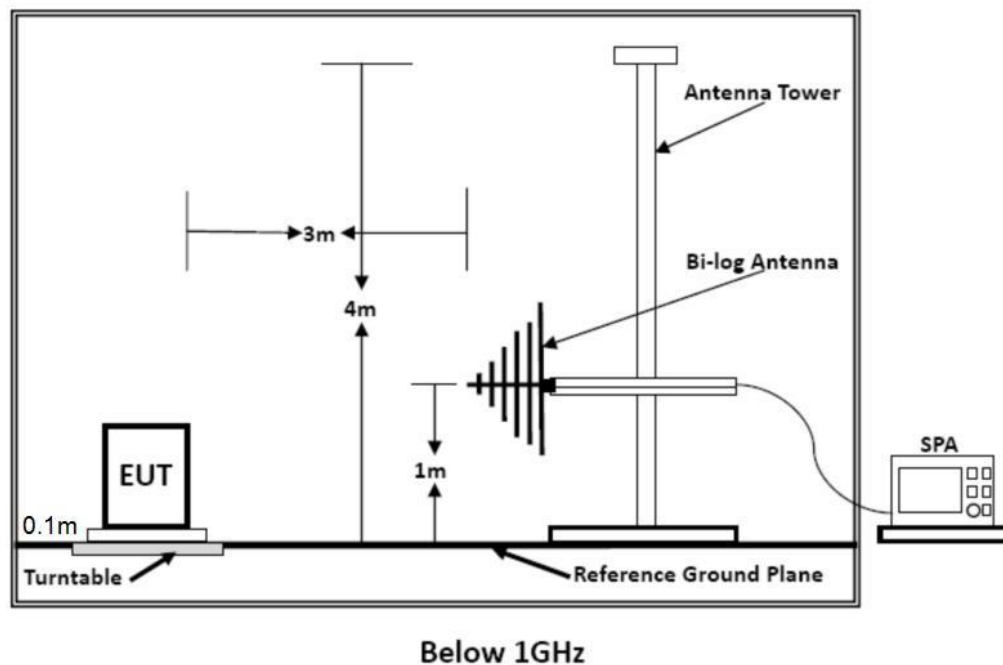
Frequency (MHz)	Distance (Meters)	Radiated (dBμV/m)	Radiated (μV/m)
0.009-0.49	3	$20\log(2400/F(\text{KHz}))+40\log(300/3)$	$2400/F(\text{KHz})$
0.49-1.705	3	$20\log(24000/F(\text{KHz}))+40\log(30/3)$	$24000/F(\text{KHz})$
1.705-30	3	$20\log(30)+40\log(30/3)$	30
30-88	3	40.0	100
88-216	3	43.5	150
216-960	3	46.0	200
Above 960	3	54.0	500

#### TEST CONFIGURATION

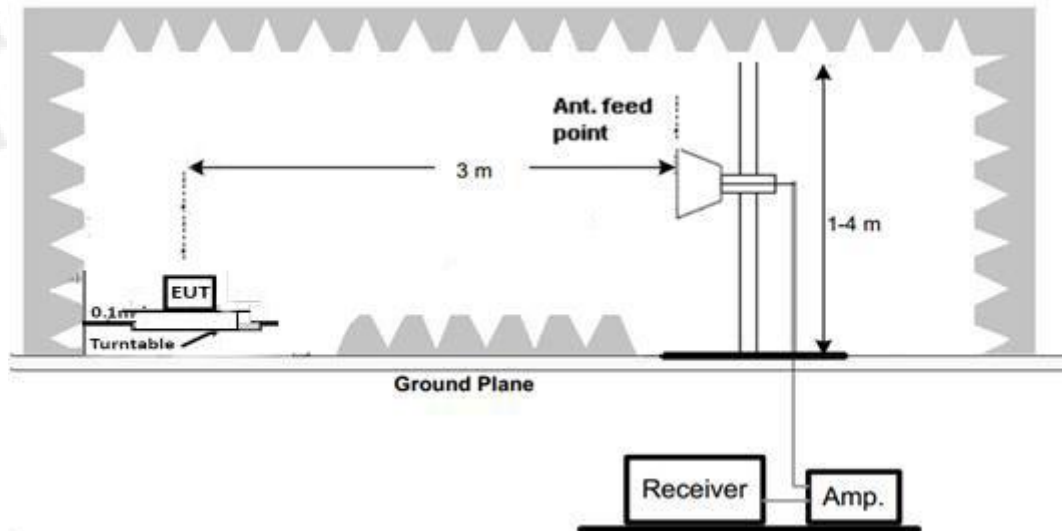
(A) Radiated Emission Test Set-Up, Frequency Below 30MHz



(B) Radiated Emission Test Set-Up, Frequency below 1000MHz



## (C) Radiated Emission Test Set-Up, Frequency above 1000MHz

**Test Procedure**

1. Below 1GHz measurement the EUT is placed on a turntable which is 0.1m above ground plane, and above 1GHz measurement EUT was placed on a low permittivity and low loss tangent turn table which is 0.1m above ground plane.
2. Maximum procedure was performed by raising the receiving antenna from 1m to 4m and rotating the turn table from 0° to 360° to acquire the highest emissions from EUT
3. And also, each emission was to be maximized by changing the polarization of receiving antenna both horizontal and vertical.
4. Repeat above procedures until all frequency measurements have been completed.
5. The EUT was pretested with 3 orientations placed on the table for the radiated emission measurement –X, Y, and Z-plane. The X-plane results were found as the worst case and were shown in this report.

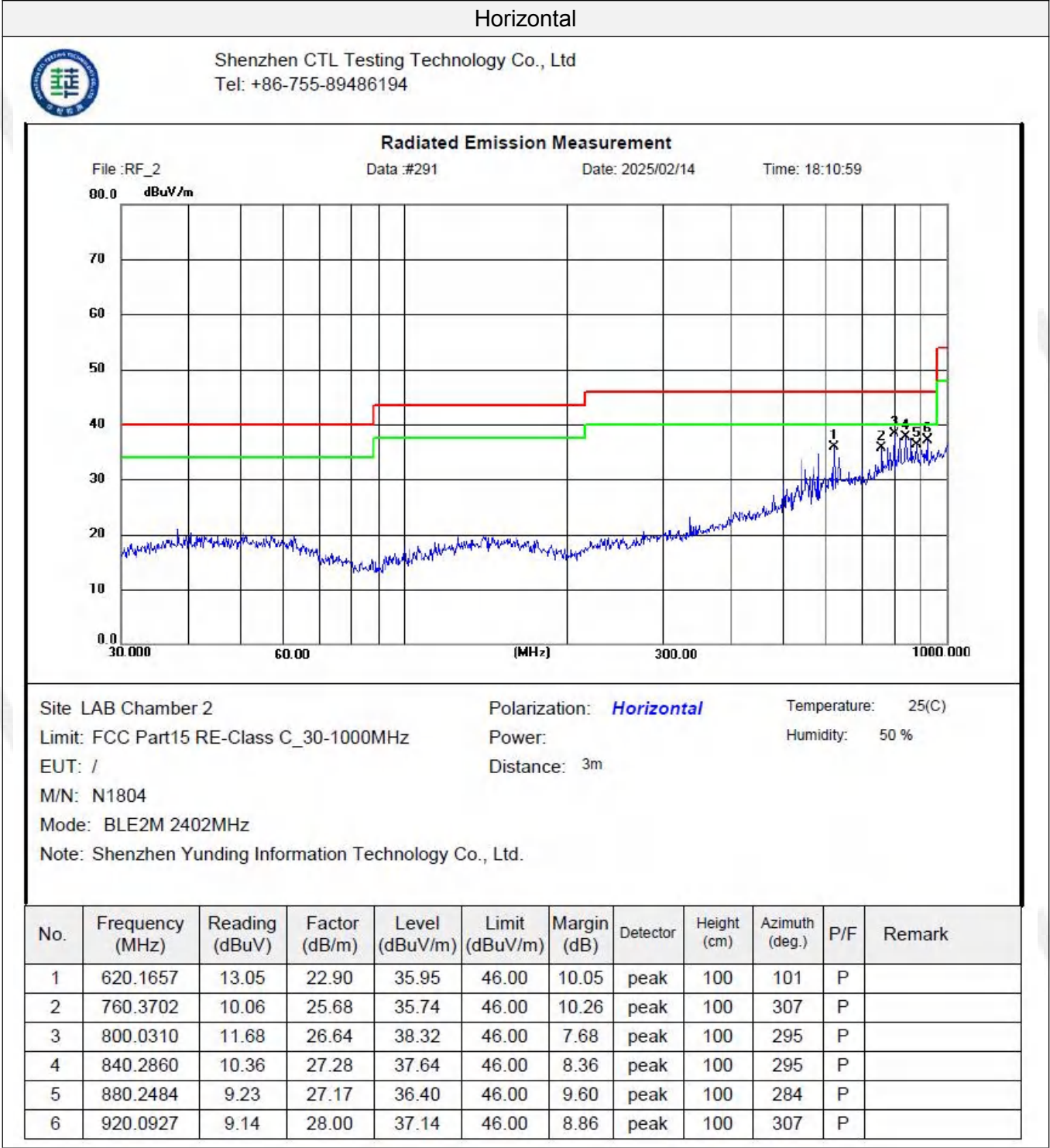
**TEST RESULTS**

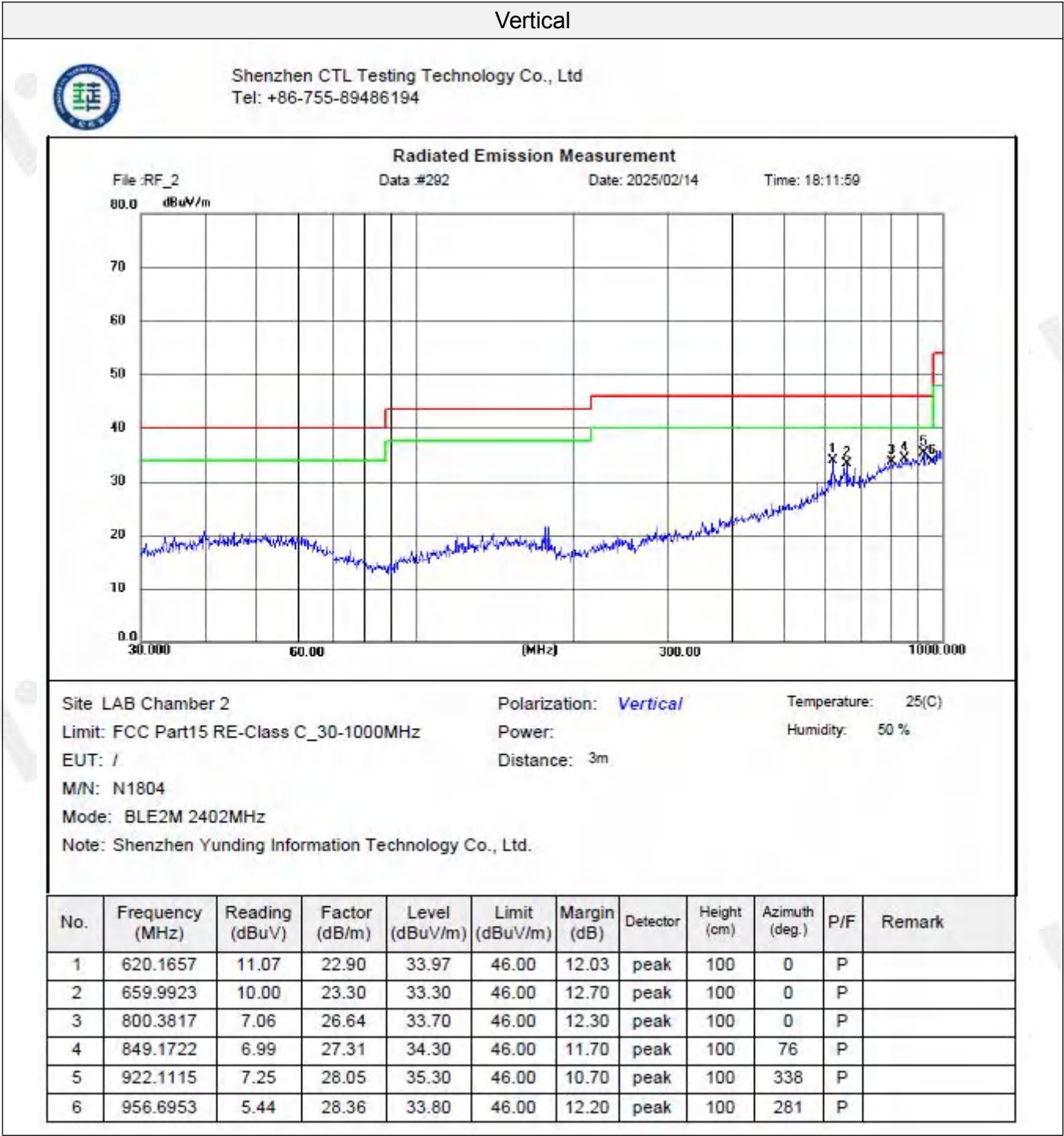
Remark:

1. We have tested low channel, middle channel, high channel of all modes.
2. Radiated emission test from 9 KHz to 10th harmonic of fundamental was verified, Found the emission level are attenuated 20dB below the limits from 9 kHz to 30MHz, so it does not recorded in report.



For 30MHz-1GHz

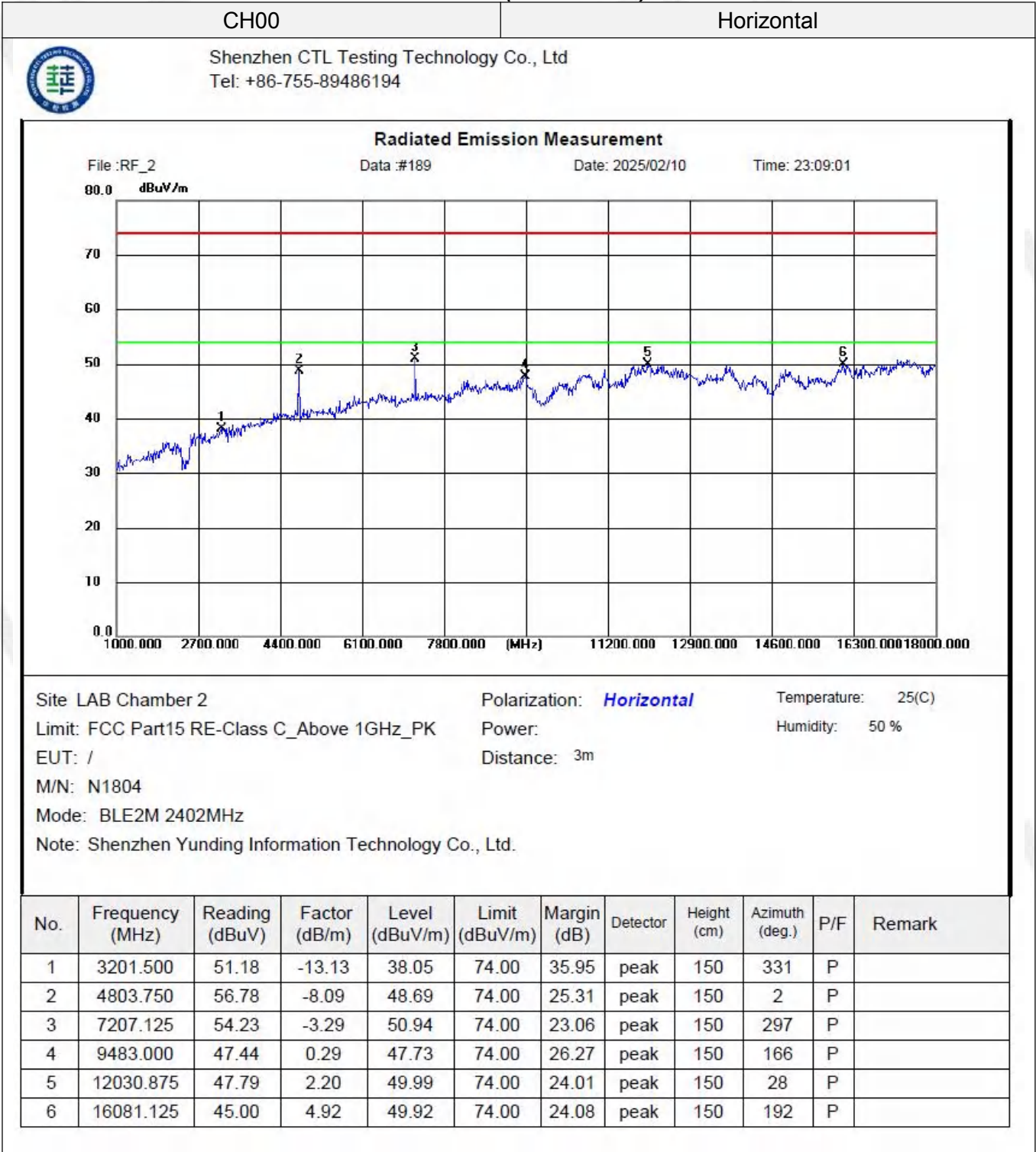




For 1GHz-18GHz

Note: All modes are tested, and only the worst mode above is captured (Test Mode 2).

BLE Mode (above 1GHz)



No.	Frequency (MHz)	Reading (dBuV)	Factor (dB/m)	Level (dBuV/m)	Limit (dBuV/m)	Margin (dB)	Detector	Height (cm)	Azimuth (deg.)	P/F	Remark
1	3201.500	51.18	-13.13	38.05	74.00	35.95	peak	150	331	P	
2	4803.750	56.78	-8.09	48.69	74.00	25.31	peak	150	2	P	
3	7207.125	54.23	-3.29	50.94	74.00	23.06	peak	150	297	P	
4	9483.000	47.44	0.29	47.73	74.00	26.27	peak	150	166	P	
5	12030.875	47.79	2.20	49.99	74.00	24.01	peak	150	28	P	
6	16081.125	45.00	4.92	49.92	74.00	24.08	peak	150	192	P	

CH00

Vertical



Shenzhen CTL Testing Technology Co., Ltd  
Tel: +86-755-89486194

## Radiated Emission Measurement

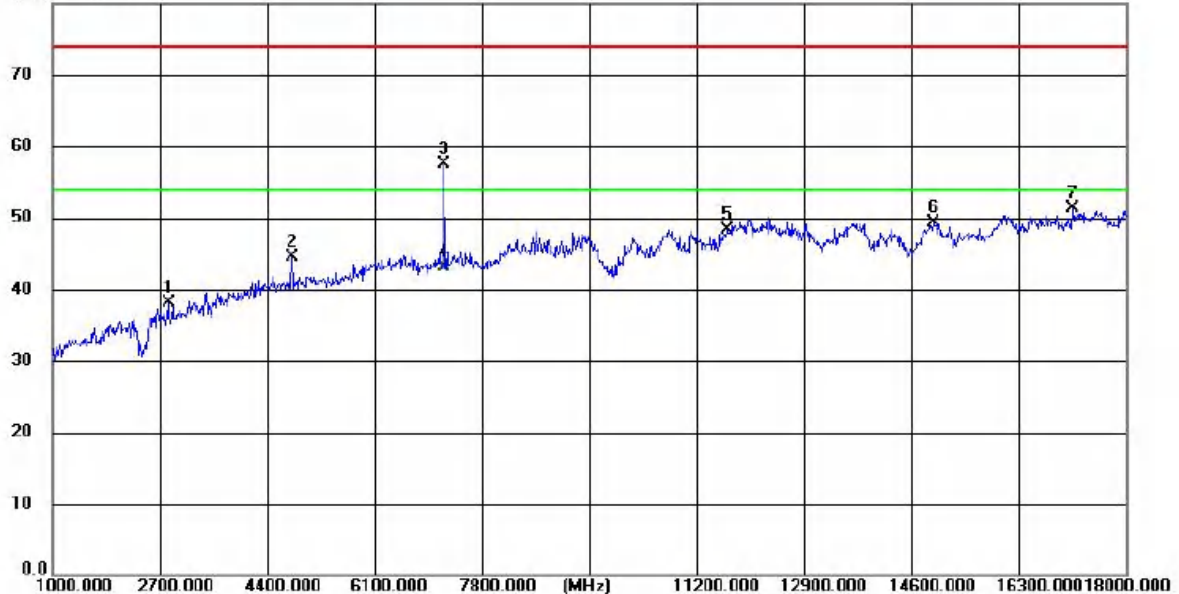
File :RF\_2

Data :#190

Date: 2025/02/10

Time: 23:10:13

00.0 dBuV/m



Site LAB Chamber 2

Polarization: **Vertical**

Temperature: 25(C)

Limit: FCC Part15 RE-Class C\_Above 1GHz\_PK

Power:

Humidity: 50 %

EUT: /

Distance: 3m

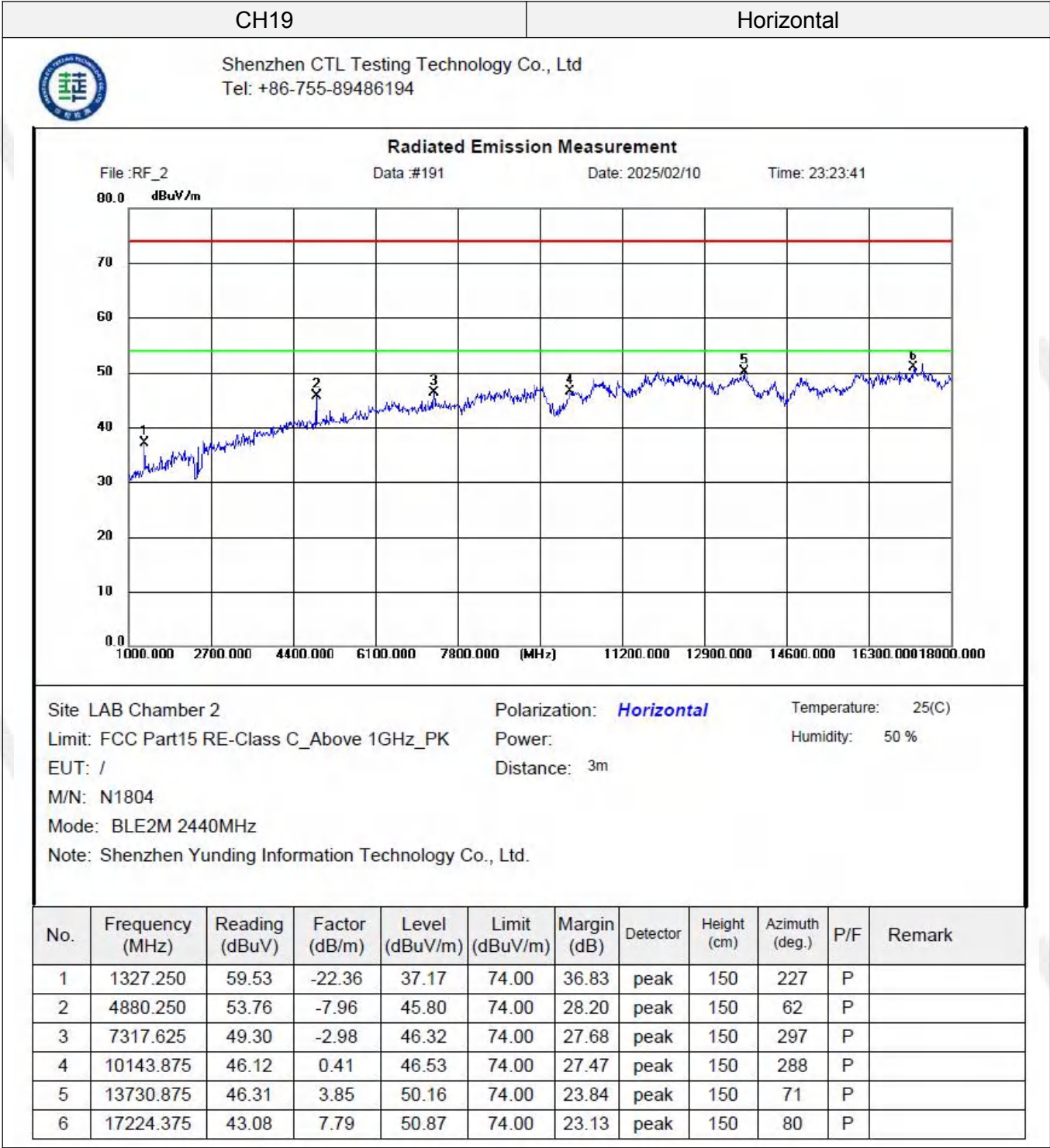
M/N: N1804

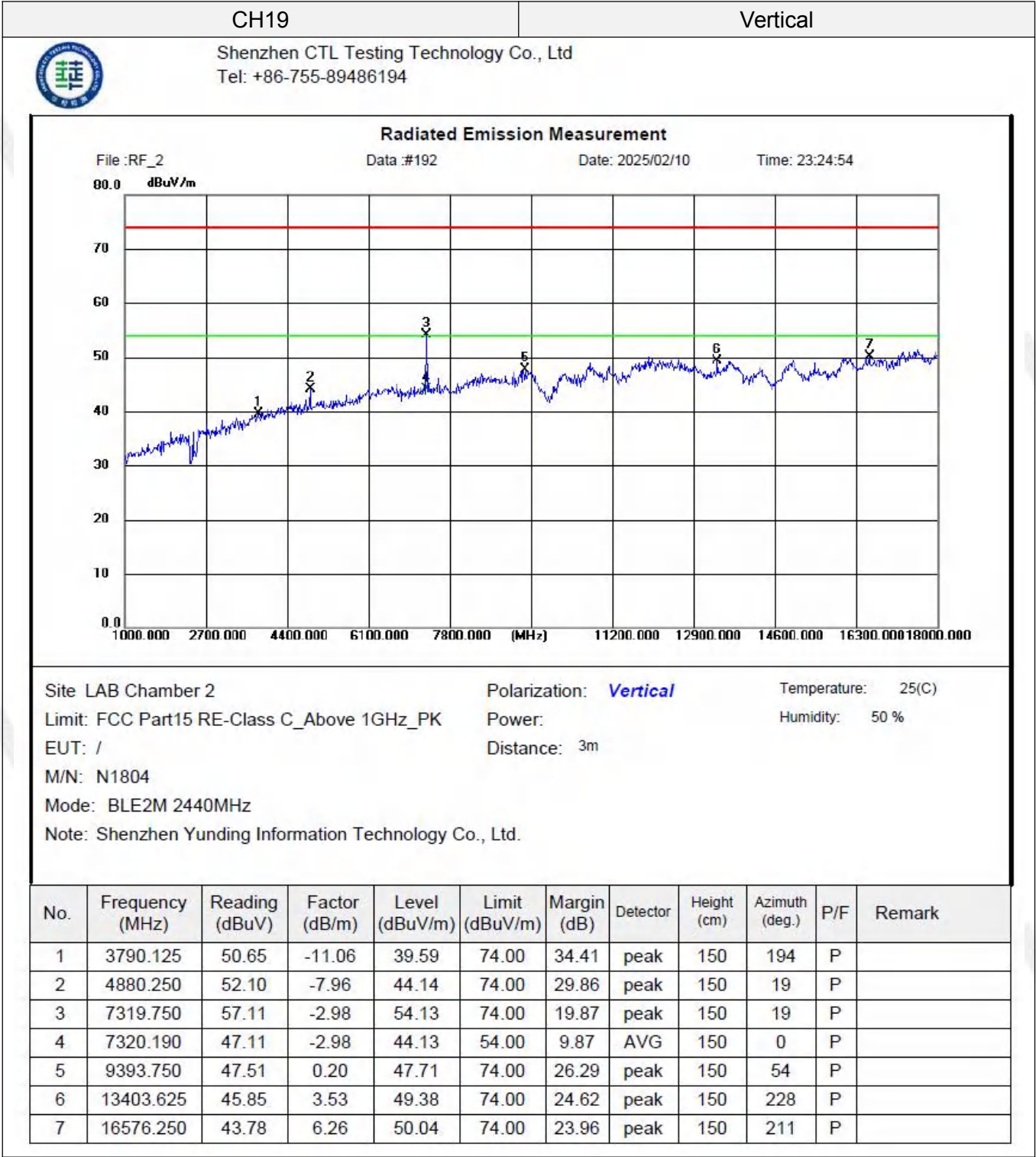
Mode: BLE2M 2402MHz

Note: Shenzhen Yunding Information Technology Co., Ltd.

No.	Frequency (MHz)	Reading (dBuV)	Factor (dB/m)	Level (dBuV/m)	Limit (dBuV/m)	Margin (dB)	Detector	Height (cm)	Azimuth (deg.)	P/F	Remark
1	2846.625	52.85	-14.80	38.05	74.00	35.95	peak	150	125	P	
2	4803.750	52.50	-8.09	44.41	74.00	29.59	peak	150	21	P	
3	7205.000	60.88	-3.29	57.59	74.00	16.41	peak	150	30	P	
4	7210.524	46.38	-3.28	43.10	54.00	10.90	AVG	150	360	P	
5	11688.750	47.00	1.36	48.36	74.00	25.64	peak	150	125	P	
6	14965.500	46.00	3.26	49.26	74.00	24.74	peak	150	358	P	
7	17162.750	43.87	7.48	51.35	74.00	22.65	peak	150	358	P	







CH39

Horizontal



Shenzhen CTL Testing Technology Co., Ltd  
Tel: +86-755-89486194

## Radiated Emission Measurement

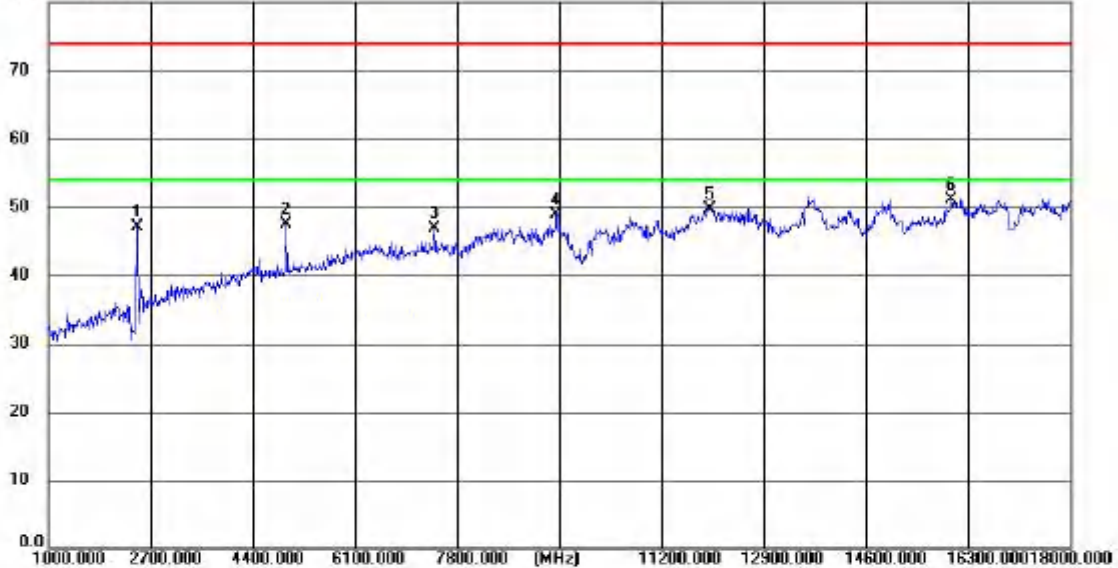
File: RF\_2

Data: #197

Date: 2025/02/10

Time: 23:37:47

80.0 dBuV/m



Site: LAB Chamber 2

Polarization: *Horizontal*

Temperature: 25(C)

Limit: FCC Part15 RE-Class C\_Above 1GHz\_PK

Power:

Humidity: 50 %

EUT: /

Distance: 3m

M/N: N1804

Mode: BLE2M 2480MHz

Note: Shenzhen Yunding Information Technology Co., Ltd.

No.	Frequency (MHz)	Reading (dBuV)	Factor (dB/m)	Level (dBuV/m)	Limit (dBuV/m)	Margin (dB)	Detector	Height (cm)	Azimuth (deg.)	P/F	Remark
1	2479.000	63.69	-16.65	47.04	74.00	26.96	peak	150	332	P	
2	4958.875	55.29	-7.85	47.44	74.00	26.56	peak	150	54	P	
3	7440.875	49.71	-2.81	46.90	74.00	27.10	peak	150	306	P	
4	9457.500	48.63	0.27	48.90	74.00	25.10	peak	150	315	P	
5	12013.875	47.59	2.21	49.80	74.00	24.20	peak	150	45	P	
6	16023.750	46.39	4.81	51.20	74.00	22.80	peak	150	279	P	



CH39

Vertical



Shenzhen CTL Testing Technology Co., Ltd  
Tel: +86-755-89486194

## Radiated Emission Measurement

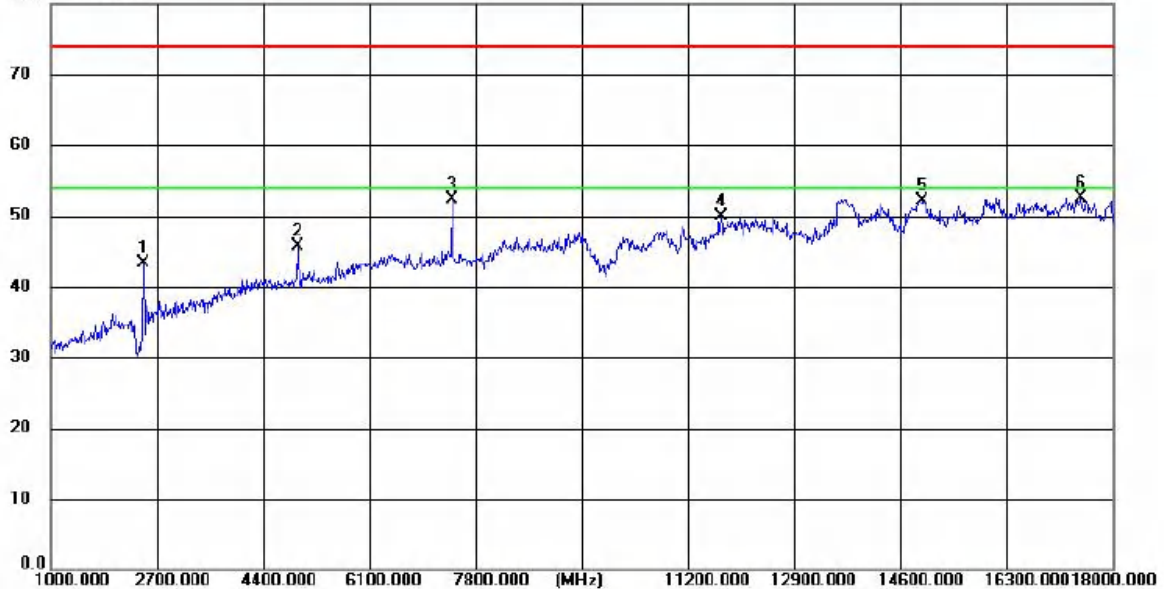
File : RF\_2

Data : #198

Date: 2025/02/10

Time: 23:39:01

00.0 dBuV/m



Site LAB Chamber 2

Polarization: **Vertical**

Temperature: 25(C)

Limit: FCC Part15 RE-Class C\_Above 1GHz\_PK

Power:

Humidity: 50 %

EUT: /

Distance: 3m

M/N: N1804

Mode: BLE2M 2480MHz

Note: Shenzhen Yunding Information Technology Co., Ltd.

No.	Frequency (MHz)	Reading (dBuV)	Factor (dB/m)	Level (dBuV/m)	Limit (dBuV/m)	Margin (dB)	Detector	Height (cm)	Azimuth (deg.)	P/F	Remark
1	2479.000	60.03	-16.65	43.38	74.00	30.62	peak	150	151	P	
2	4958.875	53.53	-7.85	45.68	74.00	28.32	peak	150	254	P	
3	7438.750	55.16	-2.81	52.35	74.00	21.65	peak	150	20	P	
4	11741.875	48.47	1.50	49.97	74.00	24.03	peak	150	37	P	
5	14959.125	48.85	3.25	52.10	74.00	21.90	peak	150	168	P	
6	17500.625	43.25	9.16	52.41	74.00	21.59	peak	150	341	P	

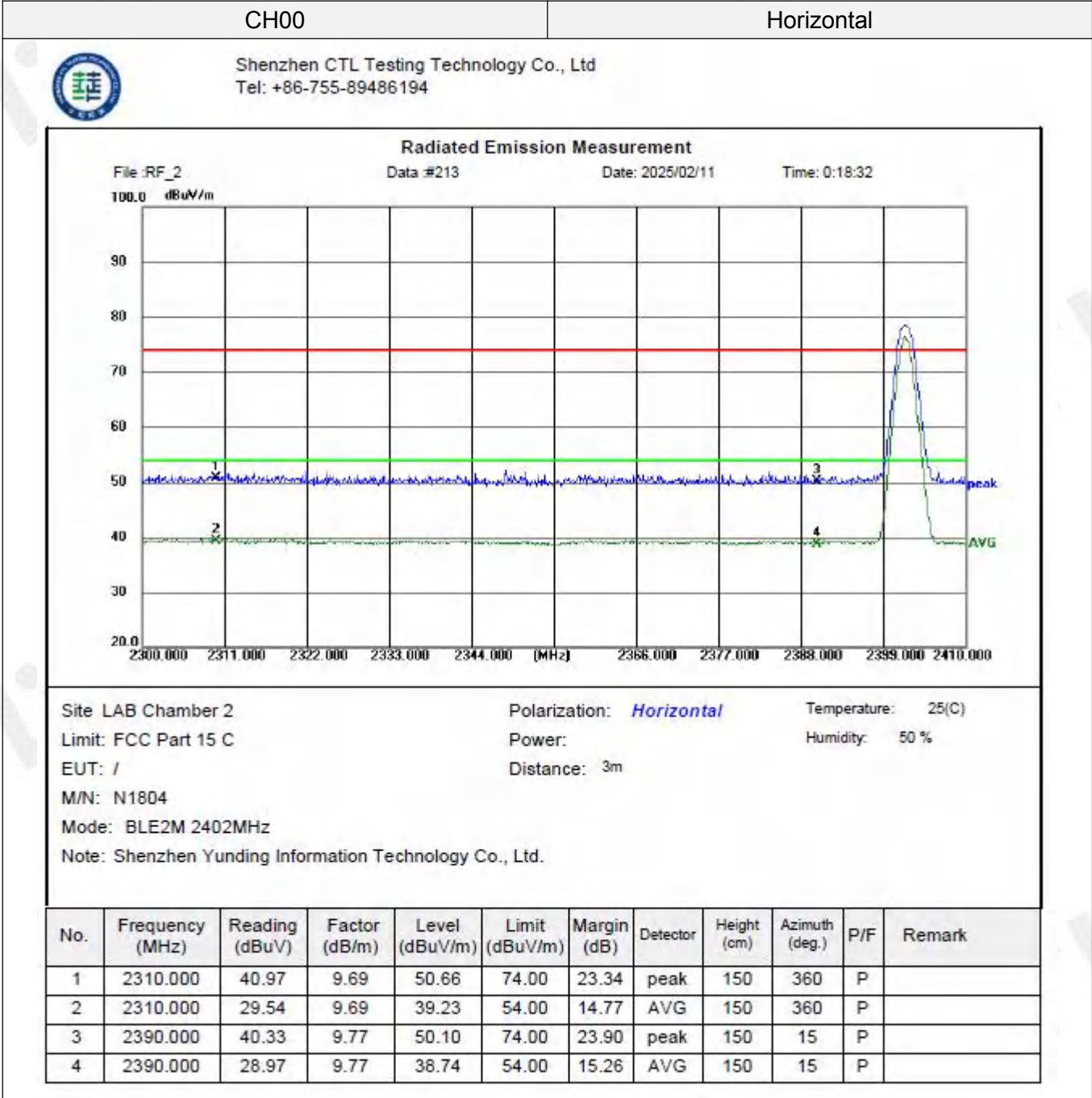
## REMARKS:

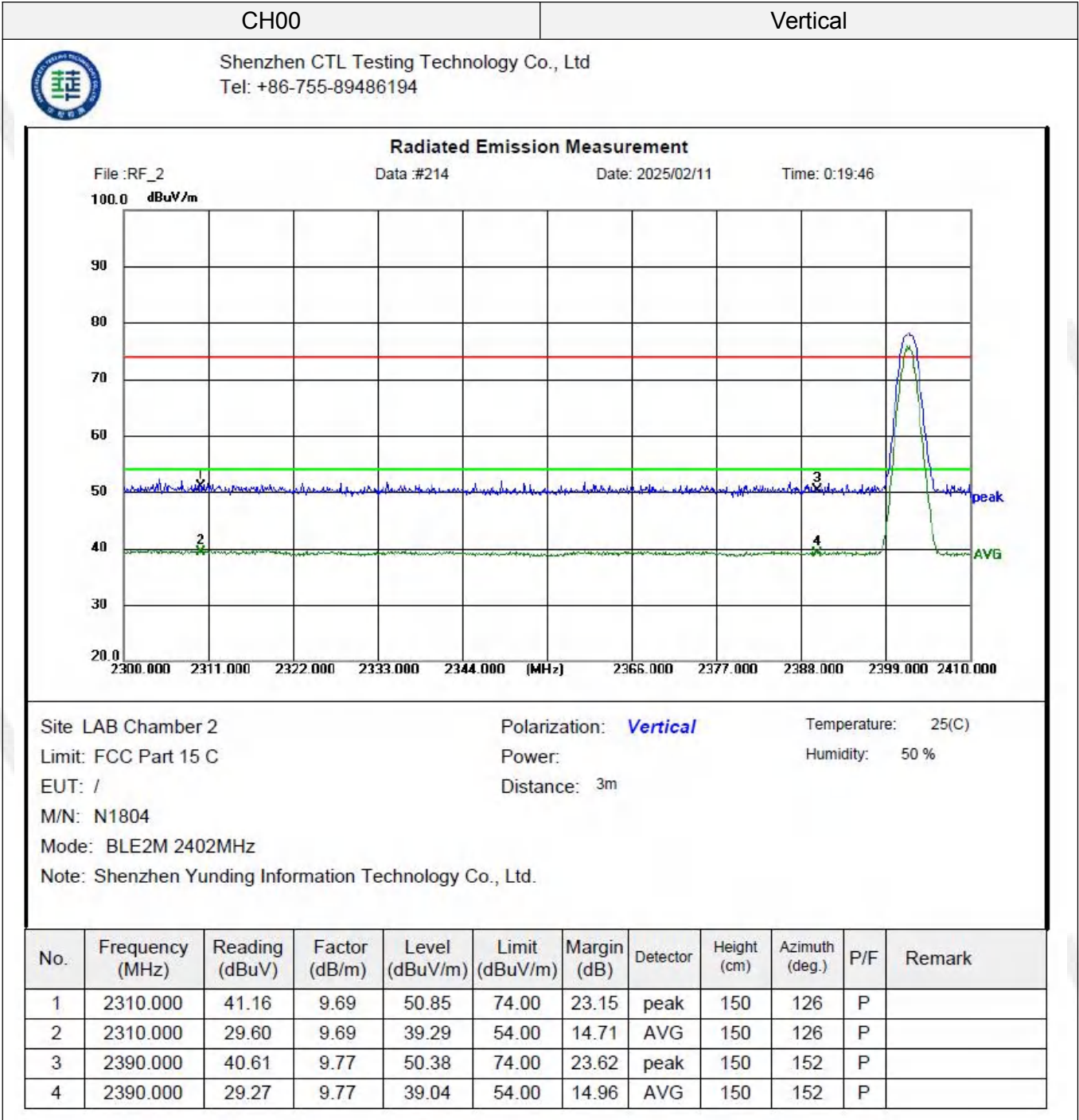
1. Emission level (dBuV/m) = Raw Value (dBuV) + Correction Factor (dB/m)
2. Correction Factor (dB/m) = Antenna Factor (dB/m) + Cable Factor (dB) - Pre-amplifier Factor
3. Margin value = Limit value - Emission level.
4. PK detector measurement value is lower than the average limit. Therefore, there is no need to test AV detector measurements.
5. RBW 1MHz VBW 3MHz Peak detector is for PK value; RBW 1MHz VBW 10Hz Peak detector is for AV value.
6. For fundamental frequency, RBW 3MHz VBW 3MHz Peak detector is for PK Value; RMS detector is for AV value.
7. Other emissions are attenuated 20dB below the limits from 9kHz to 30MHz, so it does not recorded in report.
8. 18GHz-26GHz not recorded for no spurious point have a margin of less than 6 dB with respect to the limits.

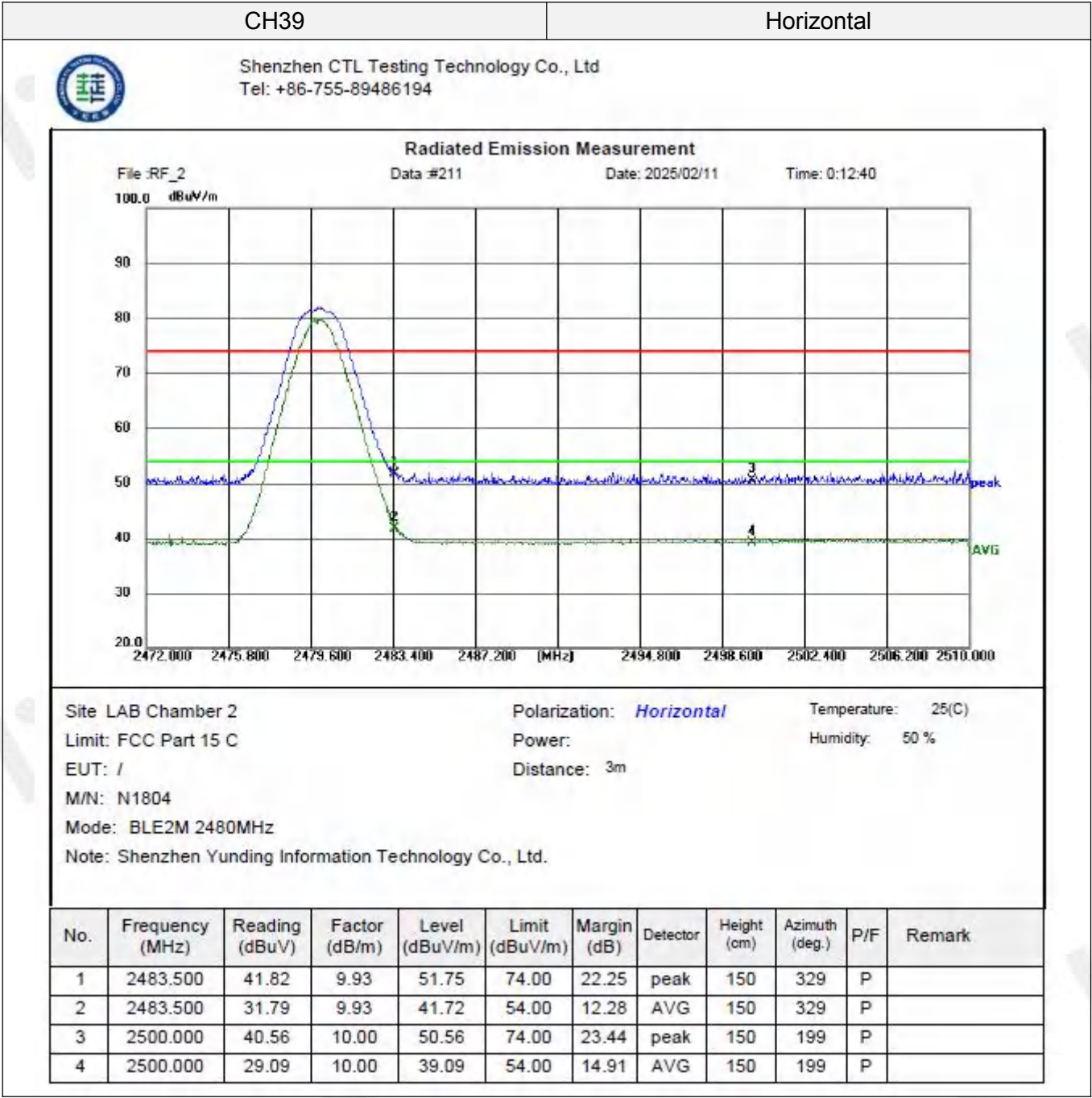


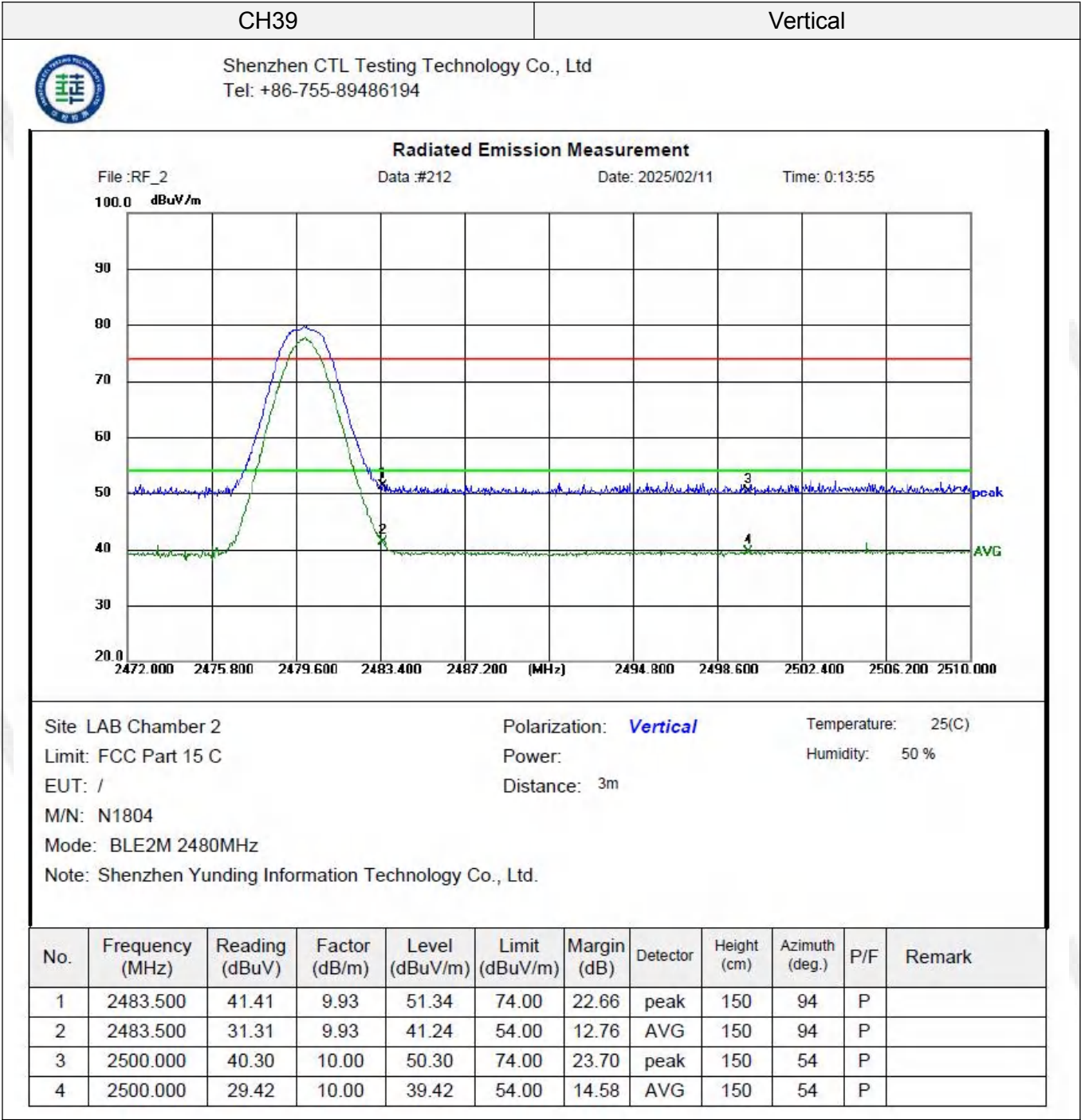
Results of Band Edges Test (Radiated)

Note: All models have been tested, only worse case Test mode 2 is reported.









### 3.3. Maximum Conducted Output Power

#### Limit

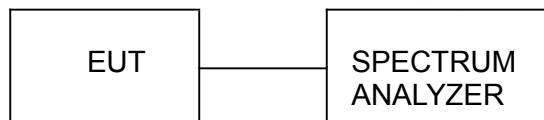
The Maximum Peak Output Power Measurement is 30dBm.

#### Test Procedure

Remove the antenna from the EUT and then connect a low loss RF cable from the antenna port to the Spectrum Analyzer.

- a) Set the RBW  $\geq$  DTS bandwidth.
- b) Set VBW  $\geq$   $[3 \times \text{RBW}]$ .
- c) Set span  $\geq$   $[3 \times \text{RBW}]$ .
- d) Sweep time = auto couple.
- e) Detector=peak.
- f) Trace mode=max hold.
- g) Allow trace to fully stabilize.
- h) Use peak marker function to determine the peak amplitude level.

#### Test Configuration



#### Test Results

Raw data reference to Section 3 of document No. CTL2412133013-WF01\_Appendix of BLE.

### 3.4. Power Spectral Density

#### Limit

For digitally modulated systems, the power spectral density conducted from the intentional radiator to the antenna shall not be greater than 8 dBm in any 3 kHz band during any time interval of continuous transmission.

#### Test Procedure

1. Use this procedure when the maximum peak conducted output power in the fundamental emission is used to demonstrate compliance.
2. Set the RBW  $\geq 3$  kHz.
3. Set the VBW  $\geq 3 \times$  RBW.
4. Set the span to 1.5 times the DTS channel bandwidth.
5. Detector = peak.
6. Sweep time = auto couple.
7. Trace mode = max hold.
8. Allow trace to fully stabilize.
9. Use the peak marker function to determine the maximum power level.
10. If measured value exceeds limit, reduce RBW (no less than 3 kHz) and repeat.
11. The resulting peak PSD level must be 8dBm.

#### Test Configuration



#### Test Results

Raw data reference to Section 4 of document No. CTL2412133013-WF01\_Appendix of BLE.

### 3.5. 6dB Bandwidth

#### Limit

For digital modulation systems, the minimum 6 dB bandwidth shall be at least 500 kHz

#### Test Procedure

The transmitter output was connected to the spectrum analyzer through an attenuator. Base band width RBW and VBW vary with bandwidth, see the table below for detailed Settings. The 6dB bandwidth is defined as the total spectrum the power of which is higher than peak power minus 6dB.

Mode	TX Type	Frequency (MHz)	RBW	VBW
1M	SISO	2402MHz	100kHz	300kHz
		2440MHz	100kHz	300kHz
		2480MHz	100kHz	300kHz
2M	SISO	2402MHz	100kHz	300kHz
		2440MHz	100kHz	300kHz
		2480MHz	100kHz	300kHz

#### Test Configuration



#### Test Results

Raw data reference to Section 2 of document No. CTL2412133013-WF01\_Appendix of BLE.



### 3.6. Out-of-band Emissions

#### Limit

In any 100 kHz bandwidth outside the frequency band in which the spread spectrum or digitally modulated intentional radiator is operating, the radio frequency power that is produced by the intentional radiator shall be at least 20 dB below that in the 100 kHz bandwidth within the band that contains the highest level of the desired power, based on either an RF conducted or a radiated measurement, provided the transmitter demonstrates compliance with the peak conducted power limits. If the transmitter complies with the conducted power limits based on the use of RMS averaging over a time interval, as permitted under paragraph (b)(3) of this section, the attenuation required under this paragraph shall be 30 dB instead of 20 dB. Attenuation below the general limits specified in §15.209(a) is not required.

#### Test Procedure

Connect the transmitter output to spectrum analyzer using a low loss RF cable, and set the spectrum analyzer to RBW=100 kHz, VBW= 300 kHz, peak detector, and max hold. Measurements utilizing these settings are made of the in-band reference level, band edge and out-of-band emissions.

#### Test Configuration



#### Test Results

Raw data reference to Section 4 of document No. CTL2412133013-WF01\_Appendix of BLE.



### 3.7. Antenna Requirement

#### Standard Applicable

**For intentional device, according to FCC 47 CFR Section 15.203:**

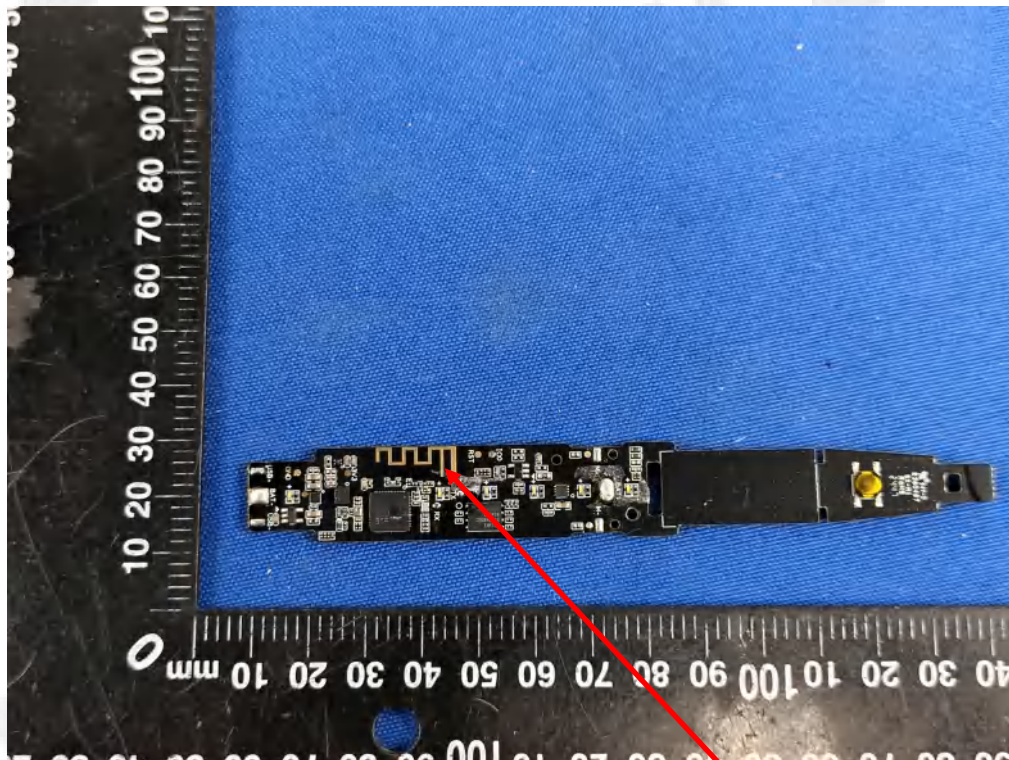
An intentional radiator shall be designed to ensure that no antenna other than that furnished by the responsible party shall be used with the device. The use of a permanently attached antenna or of an antenna that uses a unique coupling to the intentional radiator, the manufacturer may design the unit so that a broken antenna can be replaced by the user, but the use of a standard antenna jack or electrical connector is prohibited

#### **FCC CFR Title 47 Part 15 Subpart C Section 15.247(b) (4):**

(4) The conducted output power limit specified in paragraph (b) of this section is based on the use of antennas with directional gains that do not exceed 6 dBi. Except as shown in paragraph (c) of this section, if transmitting antennas of directional gain greater than 6 dBi are used, the conducted output power from the intentional radiator shall be reduced below the stated values in paragraphs (b)(1), (b)(2), and (b)(3) of this section, as appropriate, by the amount in dB that the directional gain of the antenna exceeds 6 dBi.

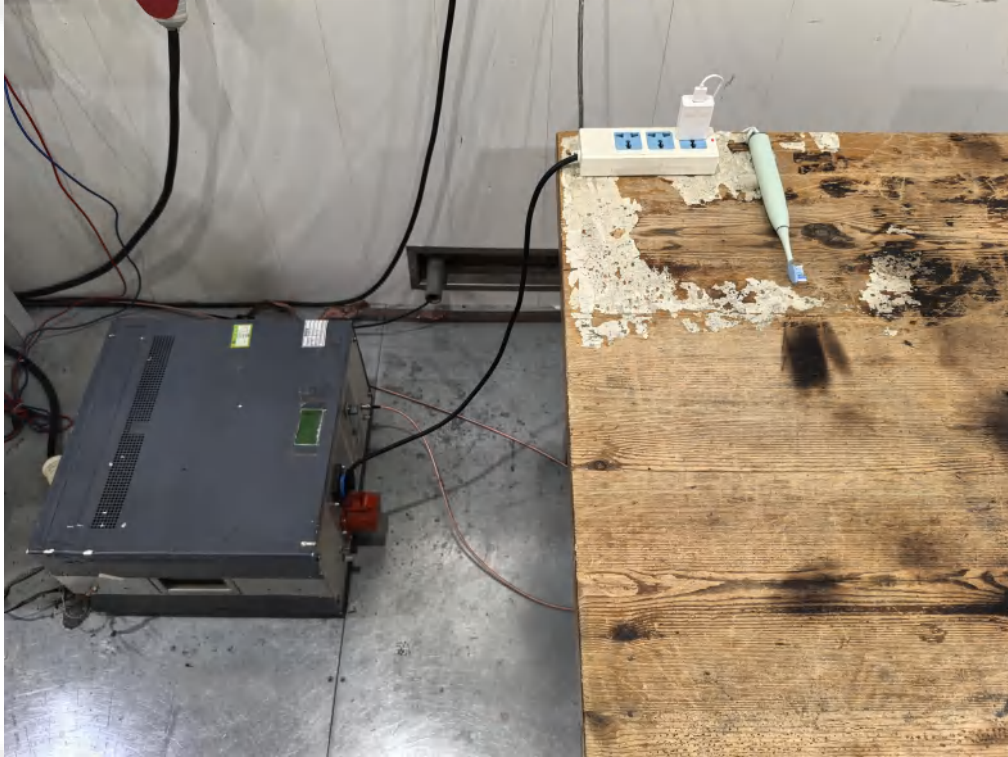
#### Test Result:

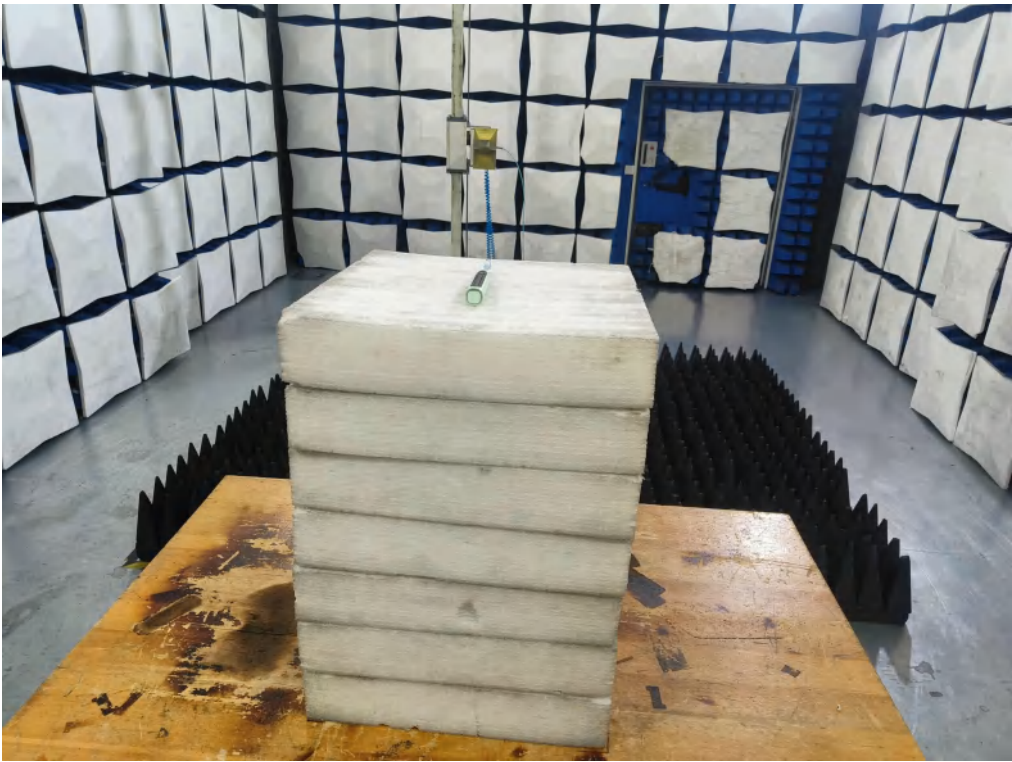
The maximum gain of antenna was -3.35dBi.



Antenna

#### 4. Test Setup Photos of the EUT



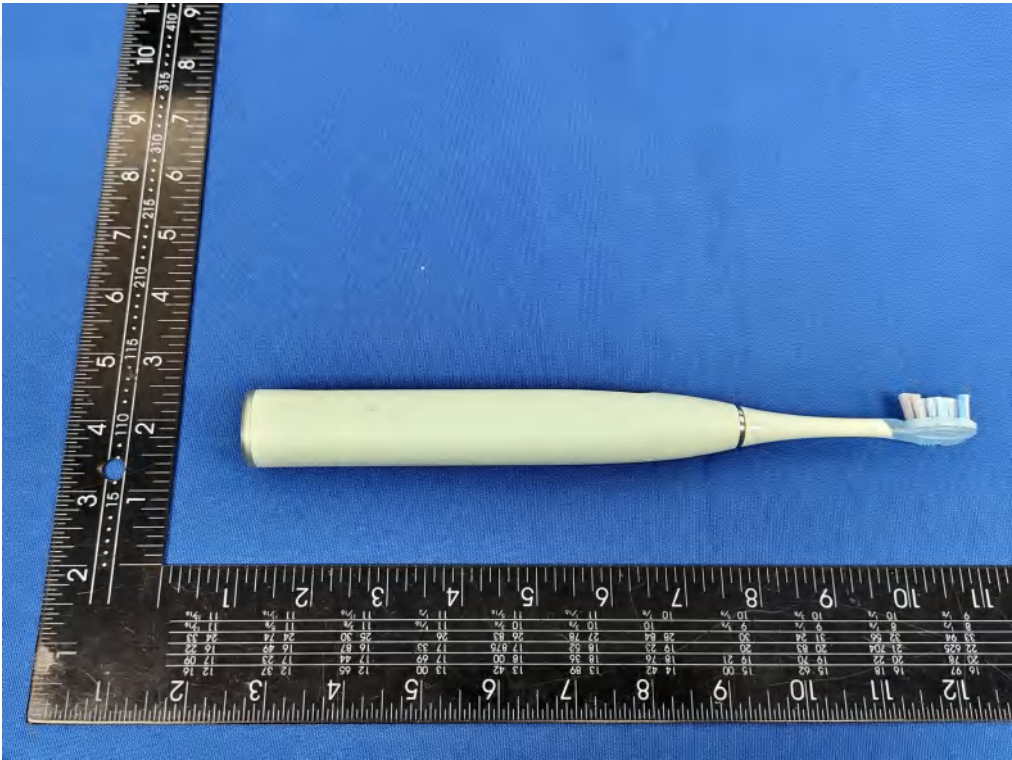




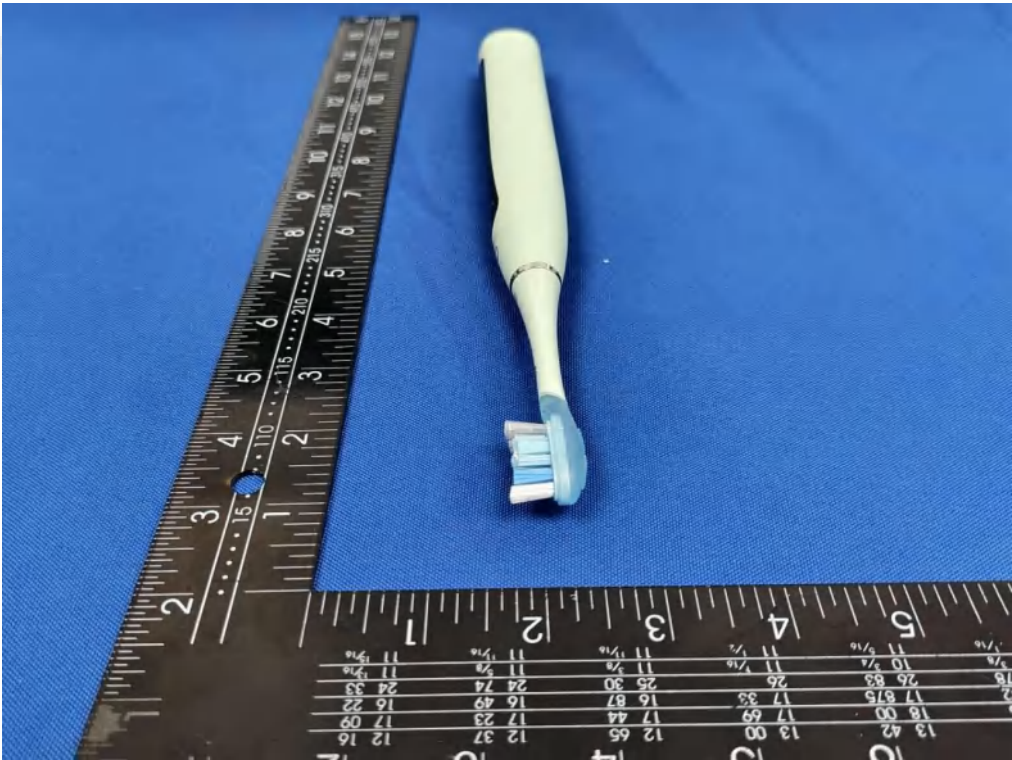
## 5. Photos of the EUT

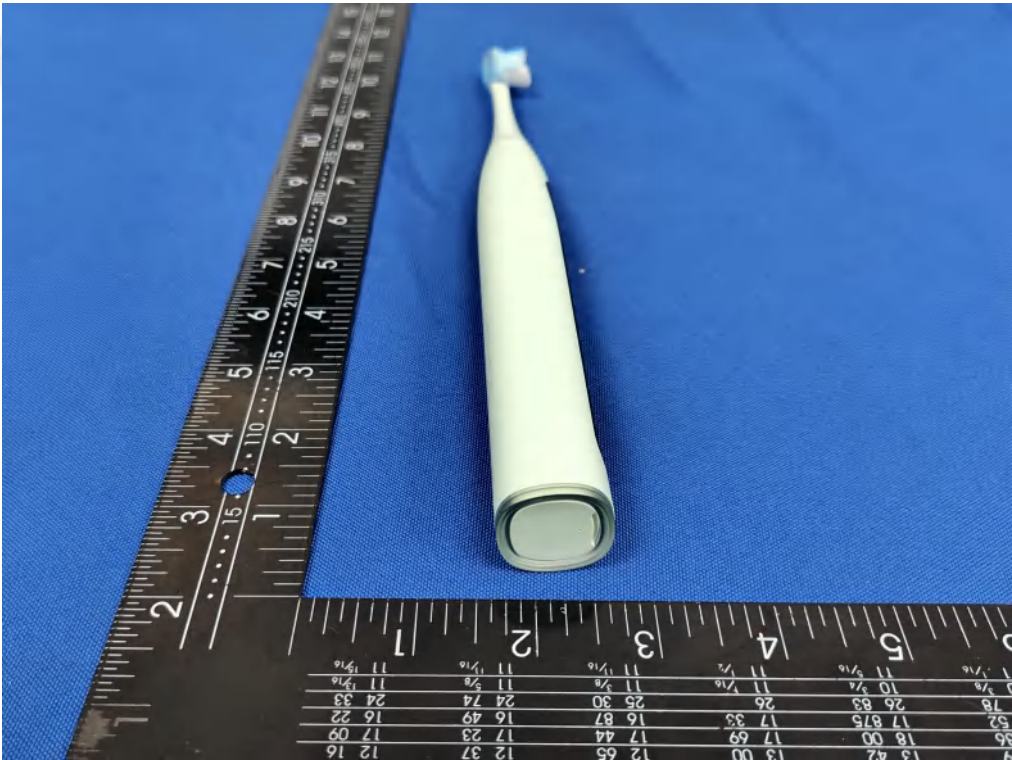
### External Photos of EUT





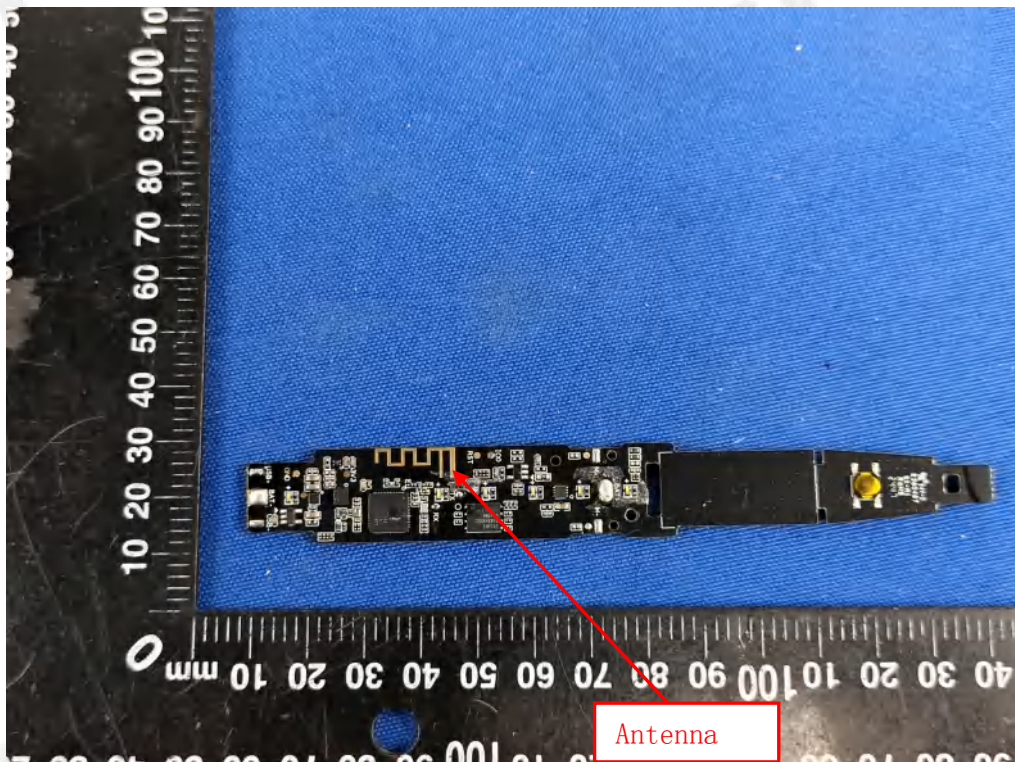




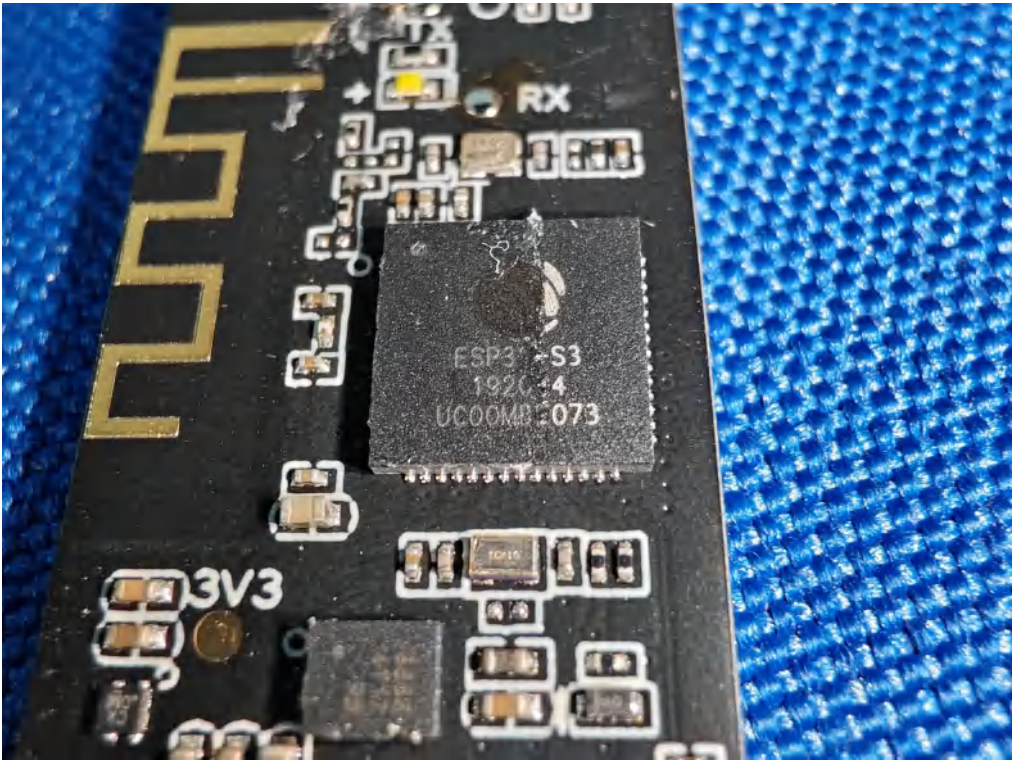
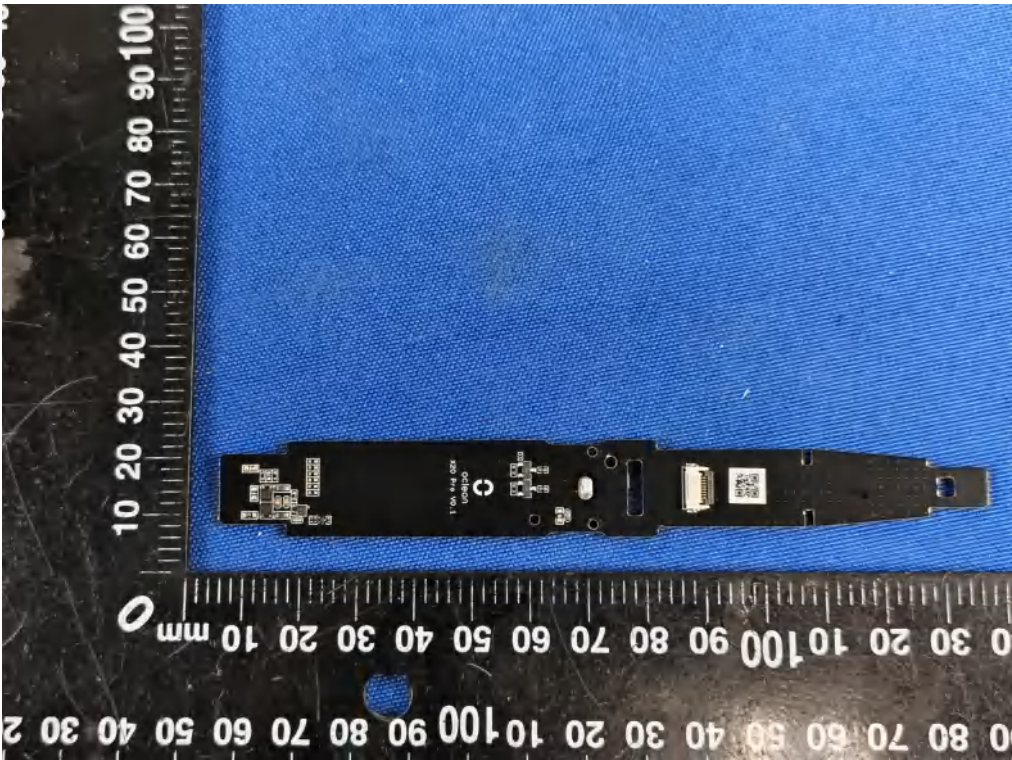




## Internal Photos of EUT









\*\*\*\*\* End of Report \*\*\*\*\*