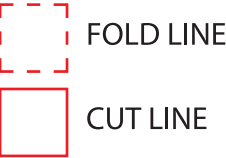


PRINT ARTWORK ON DIRECTLY ON PAPER.  
DO NOT PRINT RED FOLD AND CUT LINES. OPEN USER MANUAL DIMENSIONS: 9.8”W x 5.5” H



Front



BLUETOOTH WIRELESS EARBUDS

**ECHO**

FCC ID: 2AJQ7ECHO  
MODEL: IJ10159-AMZN





QUEST USA CORP.  
495 Flatbush Ave Brooklyn, NY 11225

© GOIJOY & IJOY are registered trademarks of QUEST USA CORP. All other trademarks and trade names are property of their respective owners. Designed by GOIJOY & IJOY in New York. All rights reserved QUEST USA CORP.

Made in China.

SIRI IS A TRADEMARK OF APPLE INC.  
ANDROID IS A TRADEMARK OF GOOGLE LLC.

The Bluetooth® word mark and logos are registered trademarks owned by Bluetooth SIG, Inc. and any use of such marks by QUEST USA CORP. is under license. Other trademarks and trade names are those of their respective owners.

for use with  
 **Bluetooth**  
enabled devices

**USER MANUAL**

**•YOUR IJOY PRODUCT**

Thank you for purchasing and using the "IJOY ECHO" BLUETOOTH WIRELESS EARBUDS listening experience while staying active. Before using this product, carefully read this manual to in order to operate at maximum benefit. Please ask your local dealer or call us if you have any questions.

IJOY ECHO BLUETOOTH WIRELESS EARBUDS x 1  
Charging Cable x 1  
User Manual x 1

**•PRODUCT SPECIFICATIONS**

- DRIVER DIAMETER: Ø8mm
- IMPEDANCE: 32R±15%
- BATTERY CAPACITY: Charging case for 300mAh, Earbud for 40mAh
- BLUETOOTH VERSION: v5.3
- BLUETOOTH RANGE: >10m
- CHARGING TIME: 1.5h
- PLAY TIME: 5-6h

**•PRODUCT FEATURES**

- Up to 20 hours Playtime
- Hands-Free Calls
- LED Indication
- Bluetooth
- Touch Controls
- LED Light Indicator
- Charging case holds 3-3.5 charges

Back

**•BLUETOOTH**

**•Charge earbuds in the charging case.**  
Earbuds will automatically turn on and sync to one another.

**•Remove earbuds from the case.**  
Find "IJOY ECHO" in your device's Bluetooth menu and select pair.

**•Connect to Bluetooth**  
Find "IJOY ECHO" in your device's Bluetooth menu and select pair.

**•Turn Off Earbuds.**  
Place earbuds back in their case to turn off earbuds.

**•BATTERY CAUTION**

The battery used in this device may present a risk of fire, explosion or chemical burn if used incorrectly. Never use or charge the battery if it appears to be leaking, discolored, deformed or in any way abnormal. Never disassemble the unit or attempt to remove the battery as that could cause leakage of alkaline solution or other electrolytic substances. Never expose the battery to any liquid. Never expose the battery to excessive heat such as direct light or fire. Always keep the battery out of the reach of infants and small children.

**•BATTERY DISPOSAL**

Please do not attempt to change the battery yourself. If the battery has died, you should follow the disposal instructions listed here. Never dispose of used batteries/electronics with ordinary solid wastes. Always dispose of used batteries/electronics in accordance with the prevailing community regulations that apply to the disposal of batteries/electronics. If there are no local regulations concerning battery/electronics disposal, please dispose of the device in a waste bin for electronic devices. Many electronics retailers now recycle batteries and other electronic components at no charge.

**•FUNCTIONS**

**LED Indicator**

**Tap Here**



**PAUSE/PLAY**  
Double tap the left or right earbud consecutively

**NEXT/PREVIOUS TRACK**  
Hold left or right earbud for 3 seconds

**VOICE ASSISTANT**  
Triple tap the left earbud consecutively

**VOLUME CONTROL**  
One tap the right earbud for Voice +  
One tap the left earbud for Voice -

**•OTHER IMPORTANT SAFETY INFORMATION**

Disposal of old electronic & electronic equipment (Applicable in the European Union and other European Counties with separate collection systems) The trash can symbol (seen on the bottom) on the production indicates that this product shall not be treated as household waste. Instead it shall be handed over to the applicable collection point for recycling of electronic equipment. By ensuring this product is disposed of correctly, you will help prevent potential negative consequences for the environment and human health, which could otherwise be caused by inappropriate waste handling. For more detailed information about this product, please contact your local household waste disposal service or the shop where you purchased this item.



**IMPORTANT REMINDERS**

This device can **ONLY** be charged by 5V adapters/  
USB ports only. Quick charging devices over 5V  
may cause heat and fire.

