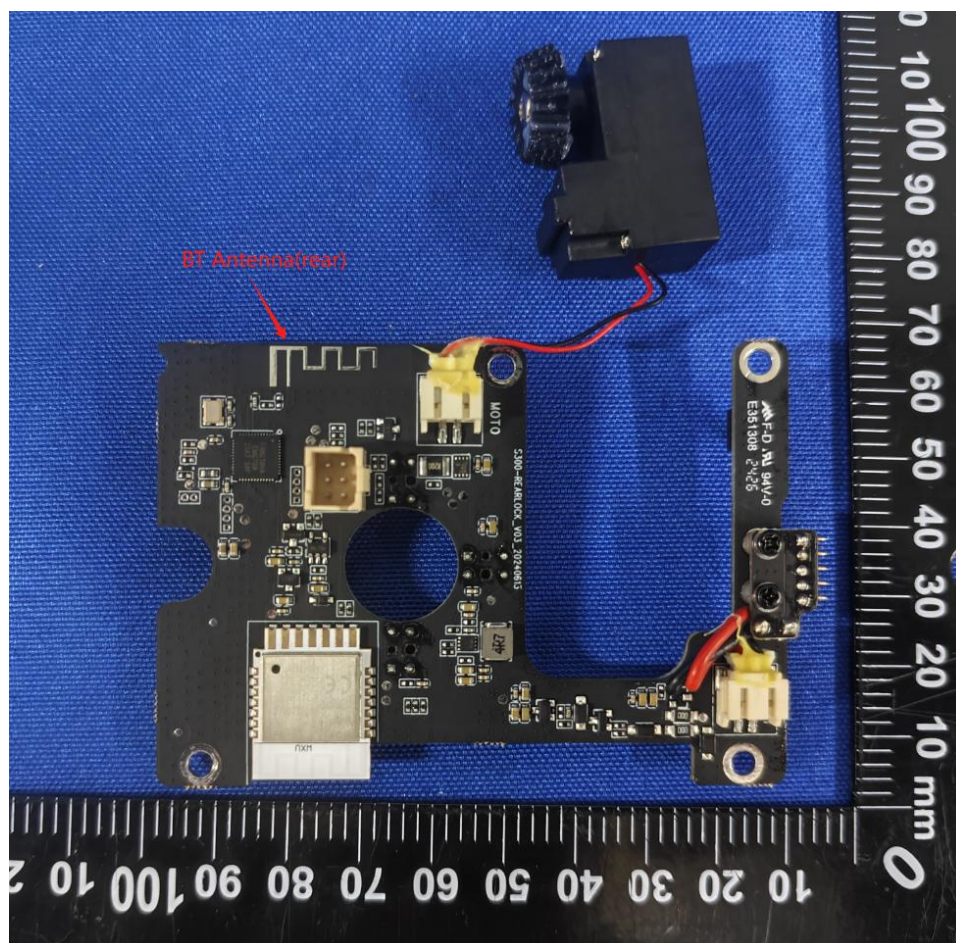
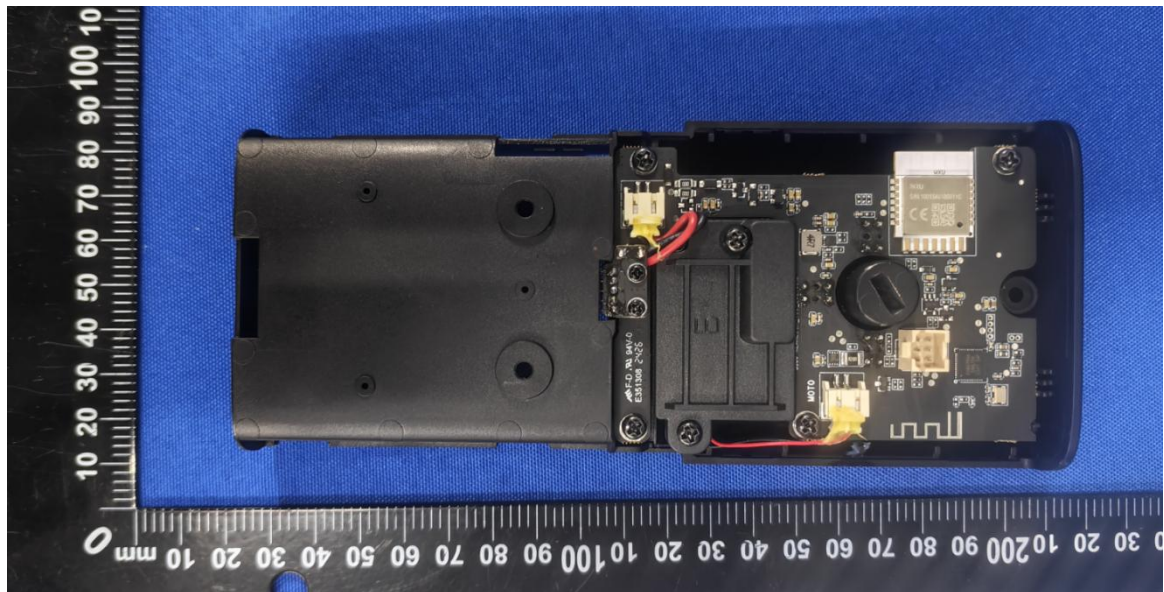
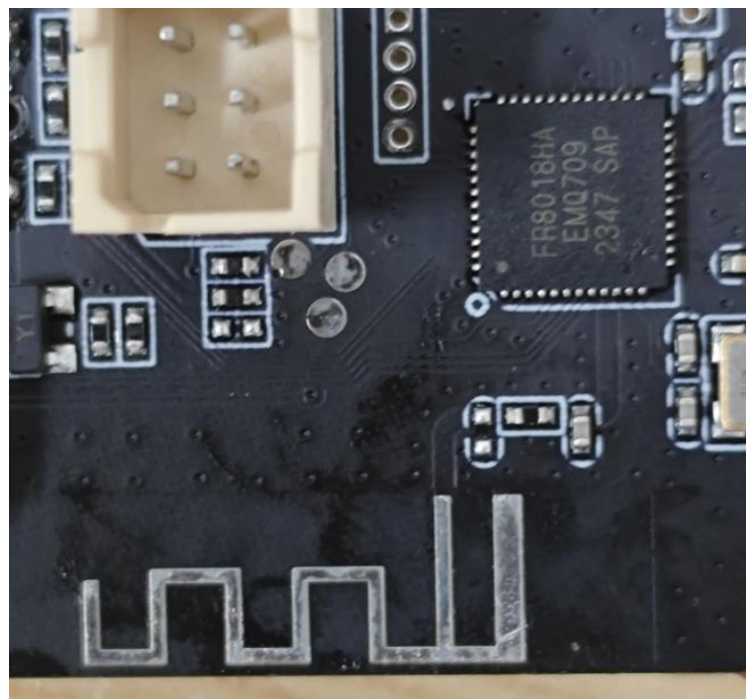
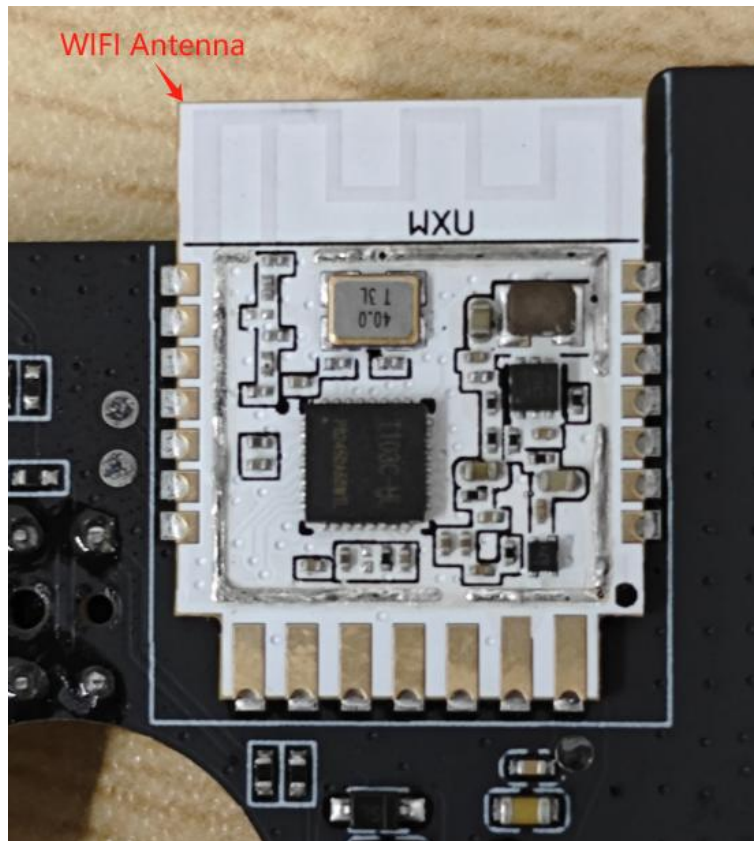
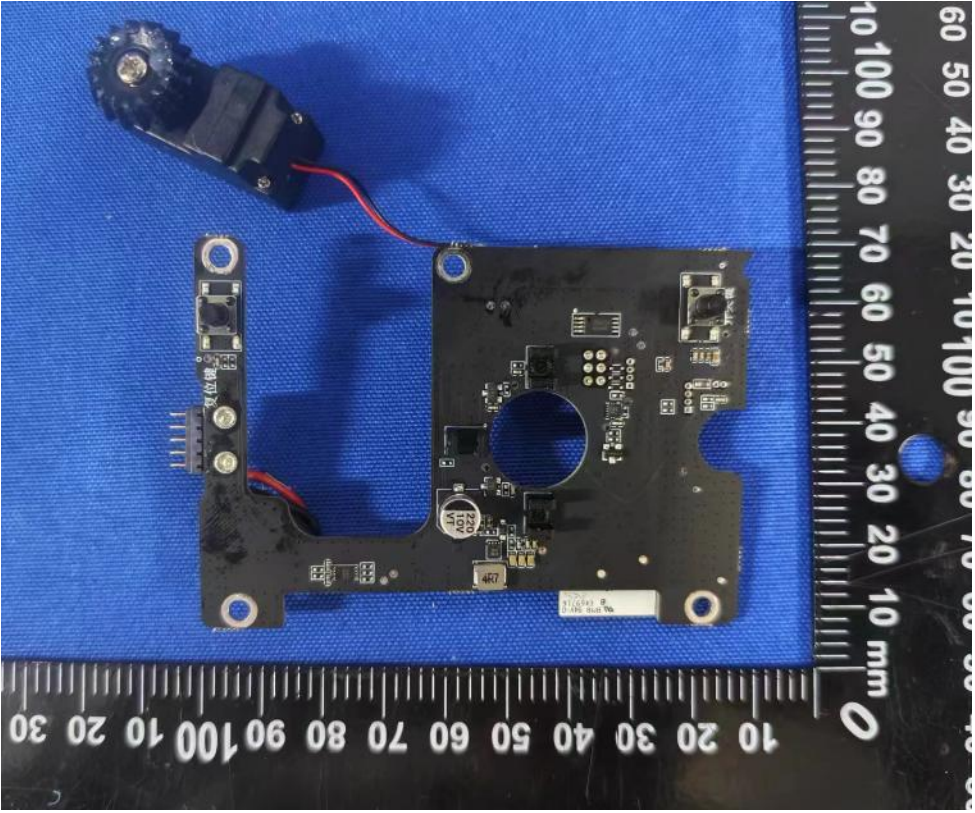


Description: Internal Photo

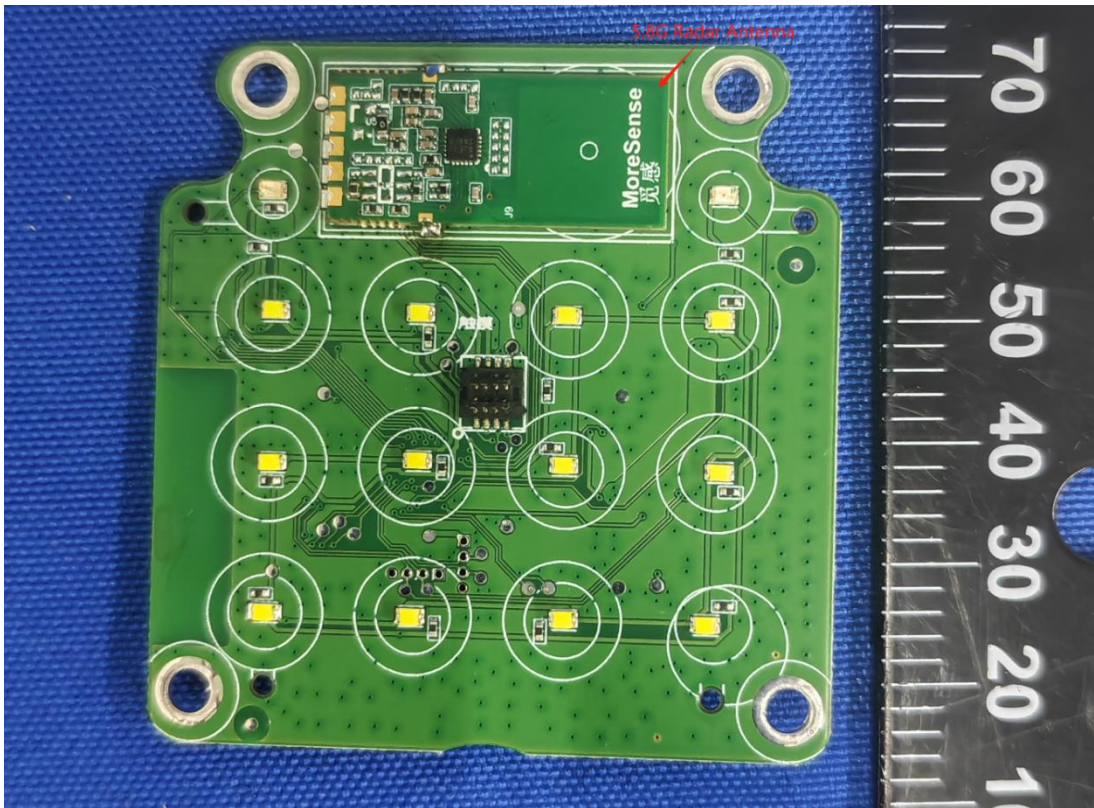
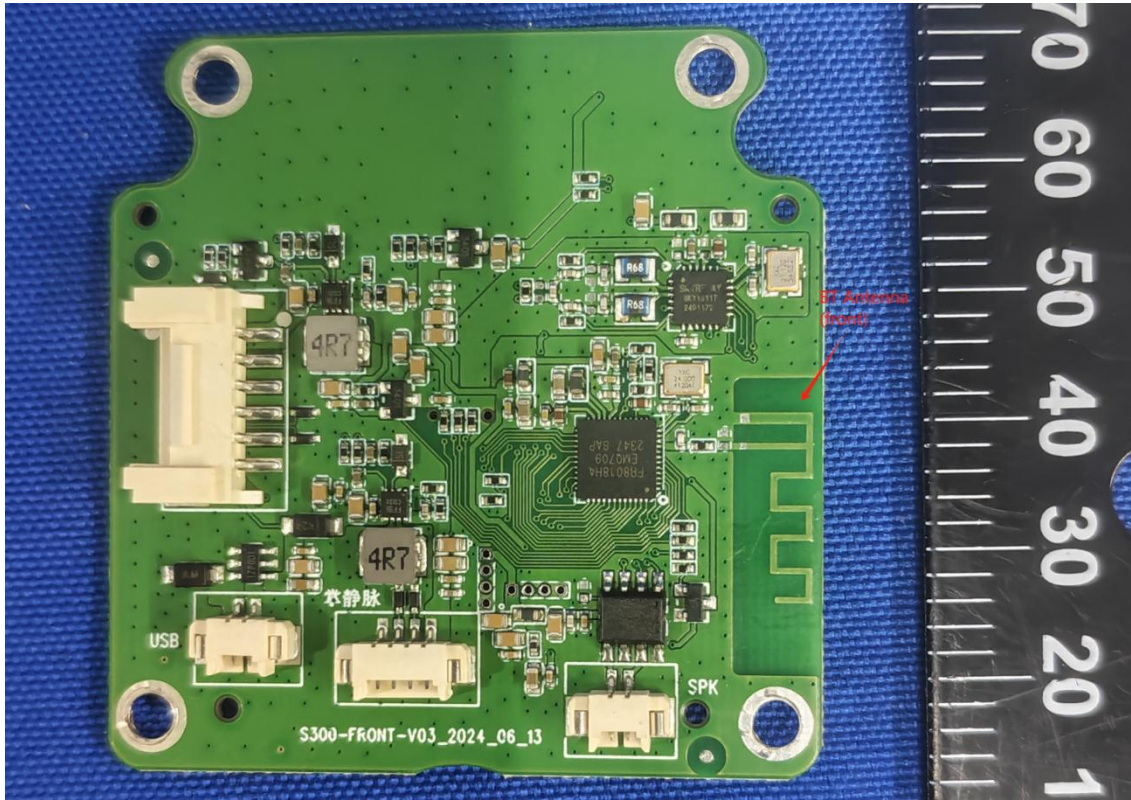


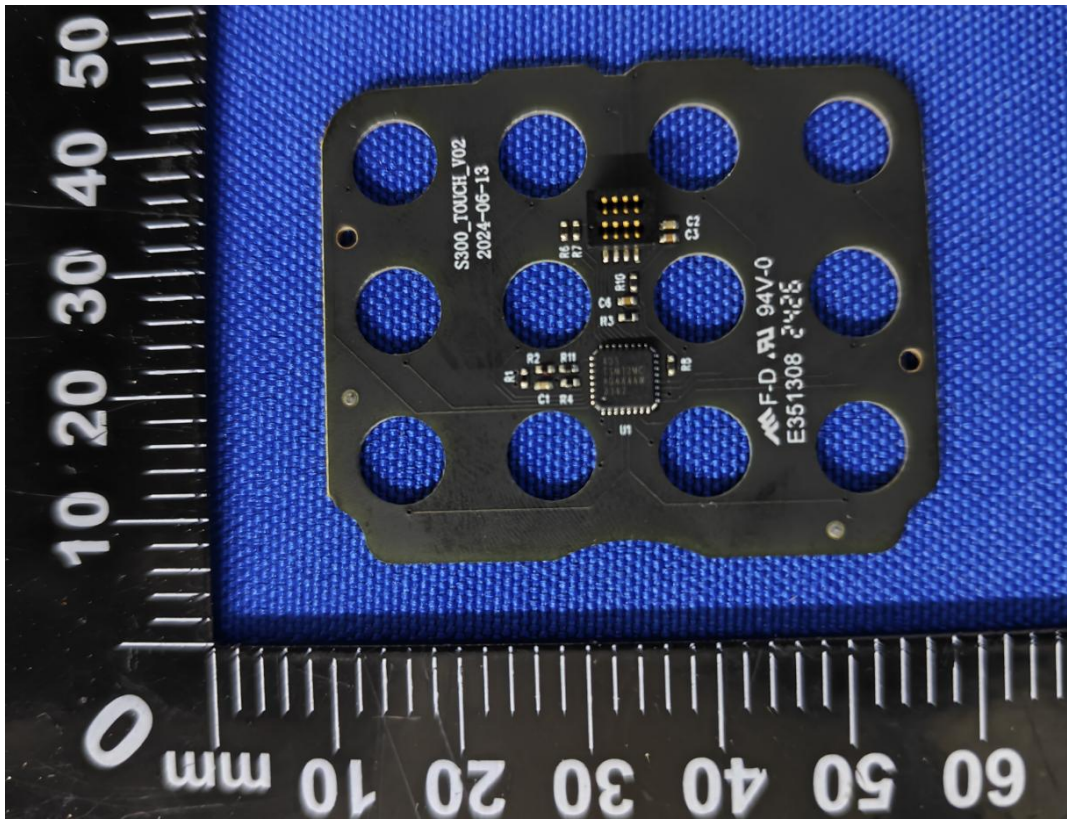
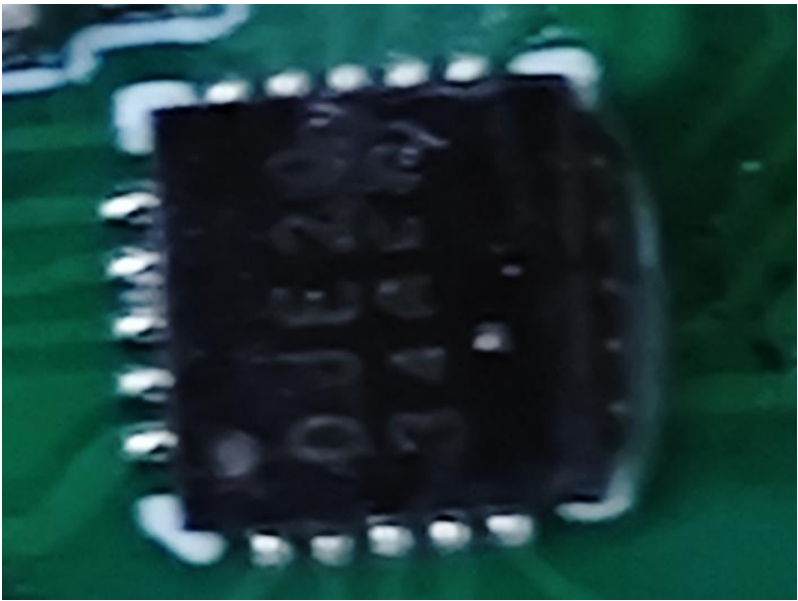




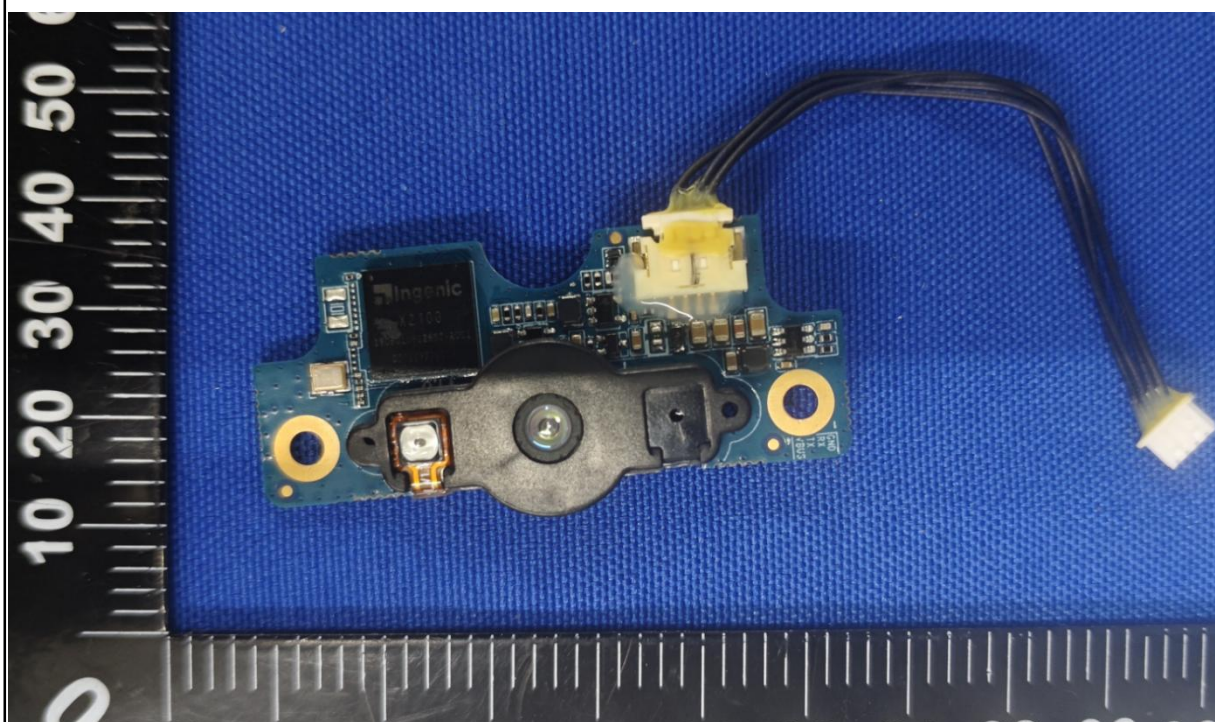
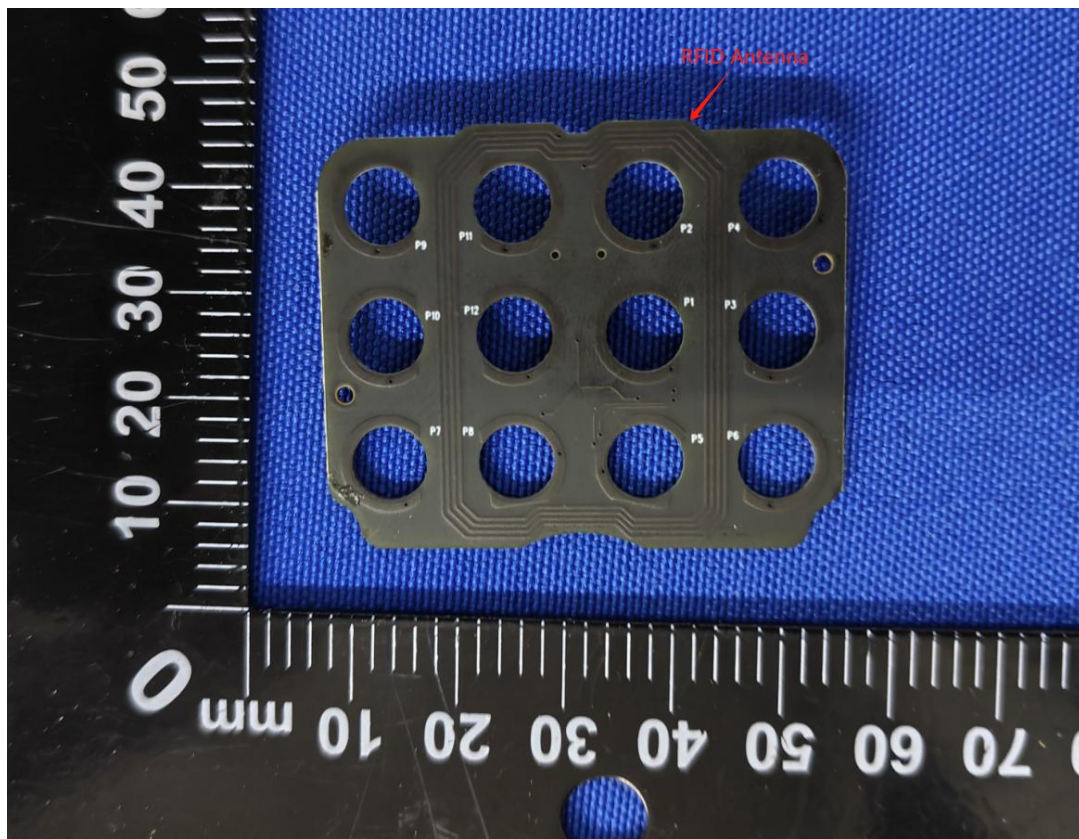




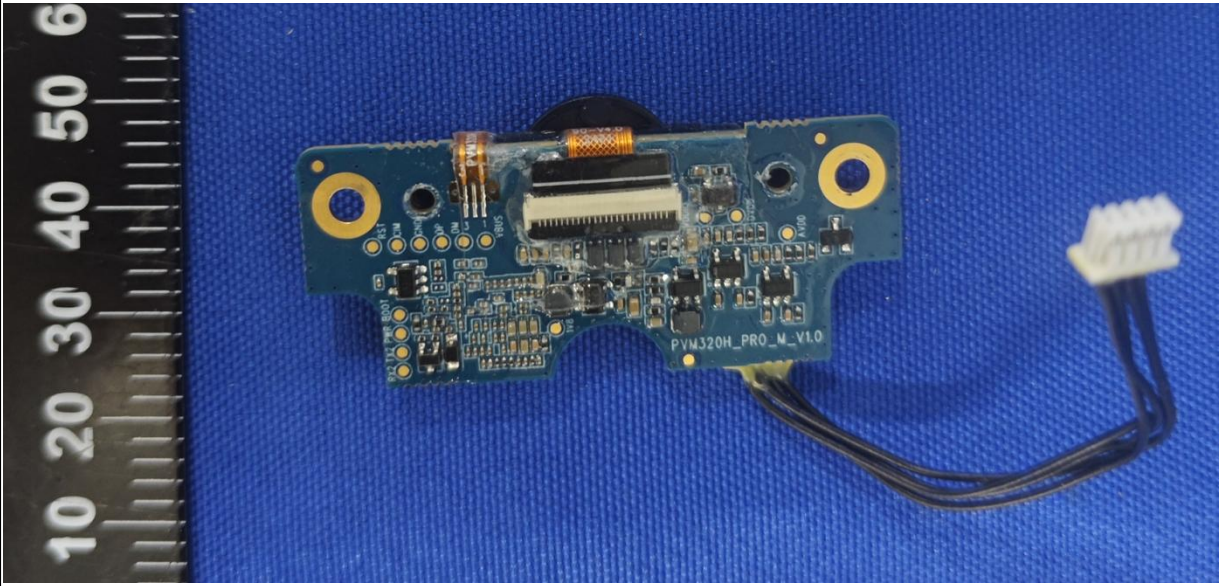












Rechargeable Li-ion Battery

Model: K100L

Nominal Voltage: 3.6V

Type-C Input: 5V=2A

Rated Capacity: 7800mAh 28.08Wh

Shen zhen RTD Technology Co., Ltd.

Date: 2023. 7. 11

CAUTION: Risk of Fire and Burns. Do Not Open, Crush, Heat Above 60°C or Incinerate. Follow Manufacturer's Instructions.

Attention: risque d'incendie et de brûlure. Ne pas ouvrir, écraser, chauffer à plus de 60 °C ou brûler. Suivez les instructions du fabricant.



Li-ion00

