

FCC ID: FSUGCPVW

EUT: SCANNER

KYE SYSTEMS CORP.

USER'S MANUAL

FEDERAL COMMUNICATIONS COMMISSION

NOTE

This equipment has been tested and found to comply with the limits for a Class B digital device, pursuant to Part 15 of the FCC Rules. These limits are designed to provide reasonable protection. This equipment generates, uses and can radiated radio frequency energy and, if not installed and used in accordance with the instructions, may cause harmful interference to radio communications. However, there is no guarantee that interference will not occur in a particular installation. If this equipment does cause harmful interference to radio or television reception, which can be determined by turning the equipment off and on, the user is encouraged to try to correct the interference by one or more of the following measures:

- Reorient or relocate the receiving antenna.
- Increase the separation between the equipment and receiver.
- Connect the equipment into an outlet on a circuit different from that to which the receiver is connected.
- Consult the dealer or an experienced radio/TV technician for help.

Shielded interface cables must be used in order to comply with emission limits.

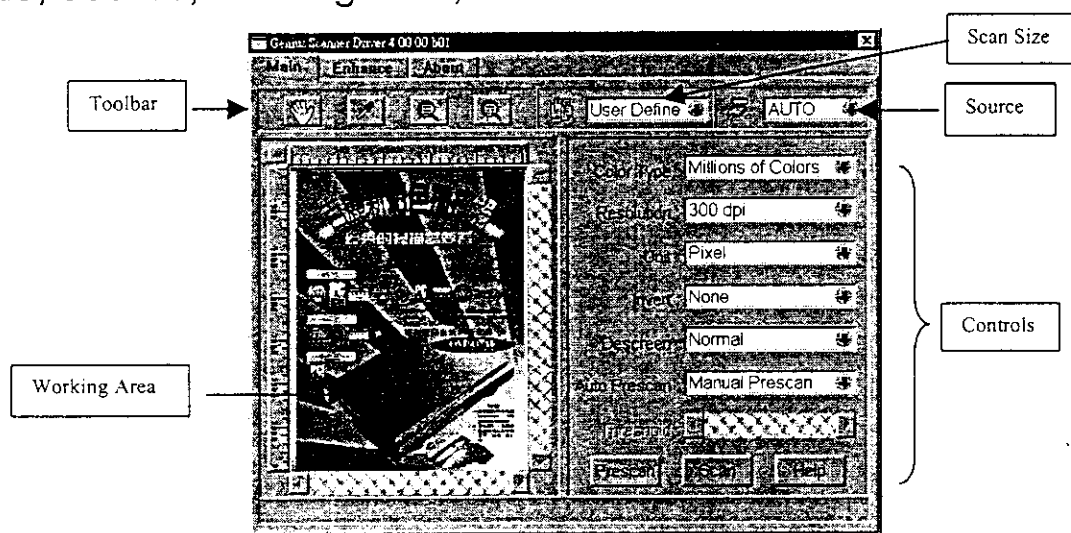
Changes or modifications not expressly approved by the party responsible for compliance could void the user's authority to operate the equipment.

1. User Interface Layout

The User Interface uses the tab control (Folder) to classify groups of control buttons. There are three types of folders: [Main], [Enhance], [About]

2. Main Folder

There are five sections on the Main page: toolbar, scan size, source, working area, and controls



以下均使用 Tip

Prescan Area

There are vertical and horizontal rulers. The image display area shows the scan frame and it can be moved and sized (left, top, right, bottom). The width and height of the prescan area will be shown below the prescan area. The Image Size is also shown there. The working area shows the image that you prescan and modified.

Ruler

The ruler shows the image size. When you change the unit, the ruler will change according to your selection.

Scan frame tool

The Scan Frame tool lets you create or modify a scan frame, which is the active area where controls and commands can be applied. The scan frame is indicated by a marquee (marching ants). To select a scan frame, first select the top-left position of the area you want to scan, press the left mouse button

You can define the prescan size as 3" x 5", 4" x 6", A4 size or custom. The origin of the selected area is in the top-left corner.

Source

You can select Parallel port (print port) or Auto detect.

Controls for Main Folder

Resolution Setting

You can select the resolution for scanning the image. The basic resolution is 300 x 300. With the software you can scale from 50 x 50 to 4800 x 4800.

Color Type

You can select the color types, there are three color types for scanning the image: millions of colors, Gray Level, Black and White.

Unit

There are three units for the ruler (inch, cm or pixel). If you change the unit, the ruler will change in the display.

Descreen

You can select the descreen function to remove moiré patterns in images. There are three defaults for descreen (Newspaper, magazine, and art magazine).

Invert

Change dark areas into light areas.

Threshold

This scroll bar will be active whenever the color type is black and white. The threshold determines the black and white value when a dot of image has a gray level. Its range is from 0 to 255.

Auto Prescan

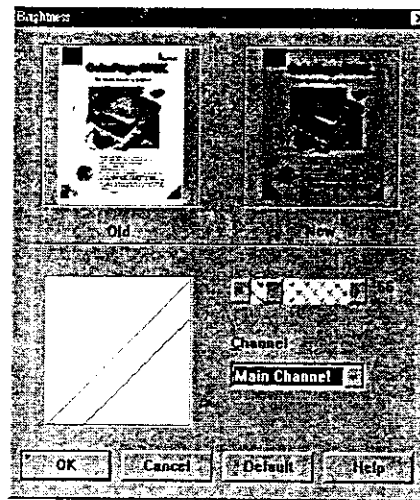
When this option is selected, starting up the scanner driver will prescan automatically.

Scan Button

Scan the image into the application.

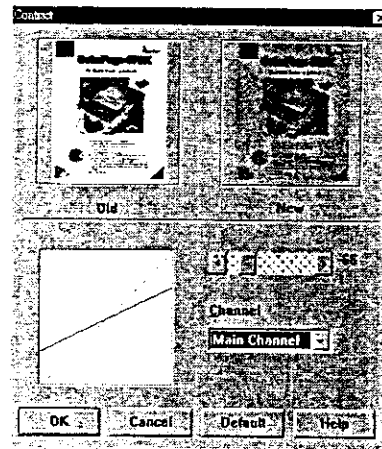
Prescan Button

Brightness Button

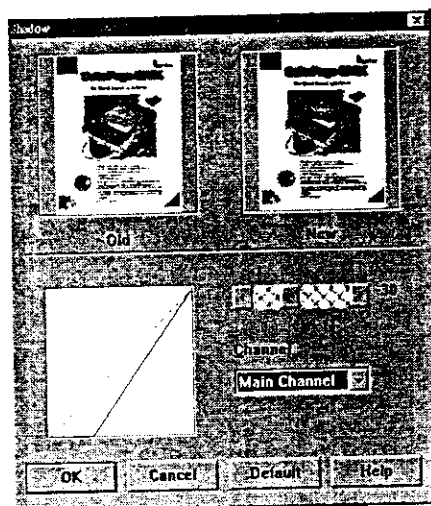


The balance of light and dark shades in an image. Brightness is distinct from contrast, which measures the range between the darkest and lightest shades in an image. Brightness determines the intensity of shades; contrast determines the number of shades you get.

Contrast Button

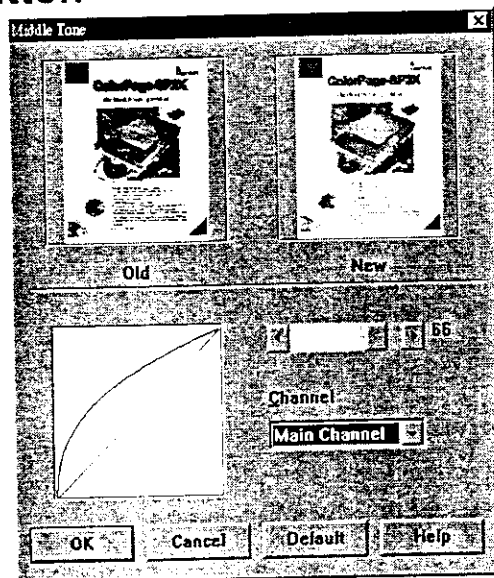


The relationship between the light and dark areas of an image. Contrast is the range between the darkest and lightest shades in an image, while brightness is the balance of light and dark shades. Contrast determines the number of shades you get; brightness determines the intensity of the shades. An image with low contrast tends to look dull and flat.



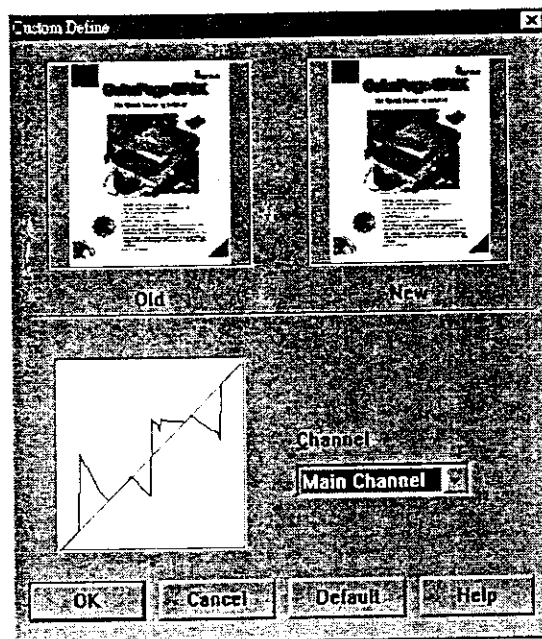
Adjusting the darkest value of an image.

Midtone Button



The parts of an image between the lighter and darker areas, at around 50% gray.

Hue button



You can change the image characteristics by yourself.

Reset Button



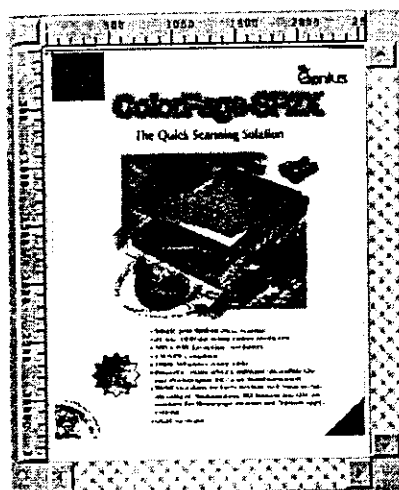
Reset the image to default.

Help Button



Open the help file. Its contents explain the functions in the Enhance folder.

Working Area



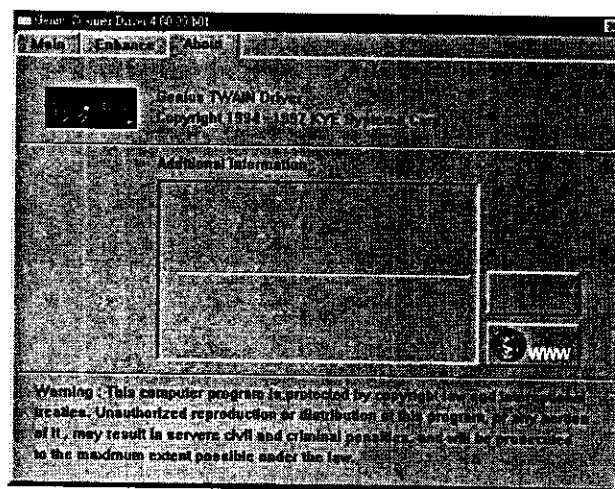
Help File

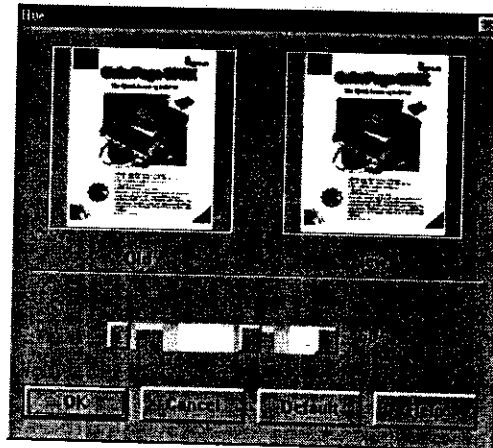


There are vertical and horizontal rulers. The image display area shows the scan frame and it can be moved and sized (left, top, right, bottom). The width and height of the working area will be shown below the working area. The Image Size is also shown there.

4. About Folder

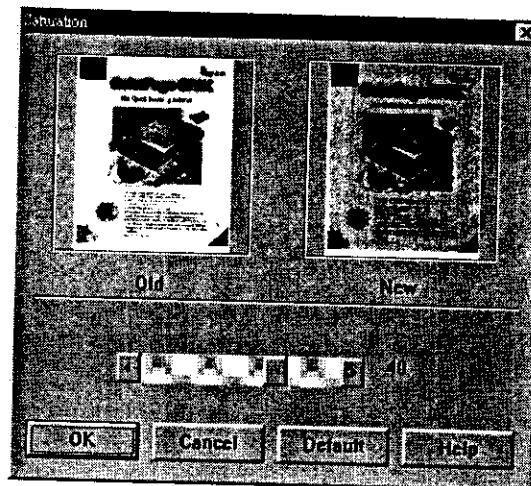
Shows Information about the Genius product, like scanner type, copyright, hardware version, link to web page ... etc.





The aspect of color that distinguishes it from another color (what makes a color red or green or blue). Hue is distinct from saturation, which measures the intensity of the hue (more red, more green).

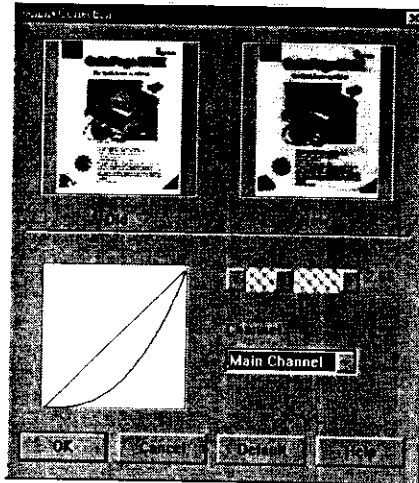
Saturation Button



The intensity of a color, or the amount of color in a specific hue. For instance, the image of a bright red apple will appear to be "more red" if the colors are saturated.

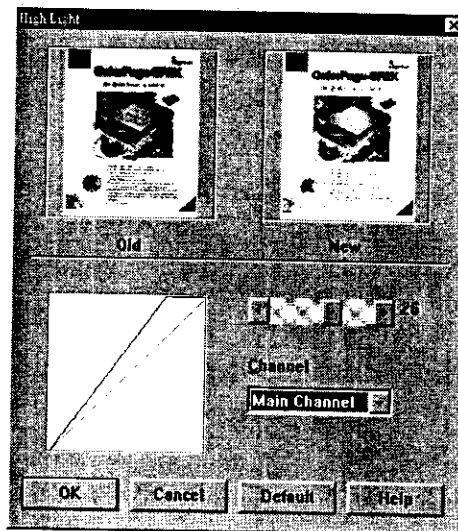
Custom button

Gamma Button



Adjusts the gamma of an image lets you change brightness values of the middle range of gray tones without dramatically altering the shadows and highlights.

Highlight Button



Adjusting the lightest value of an image.

Shadow Button

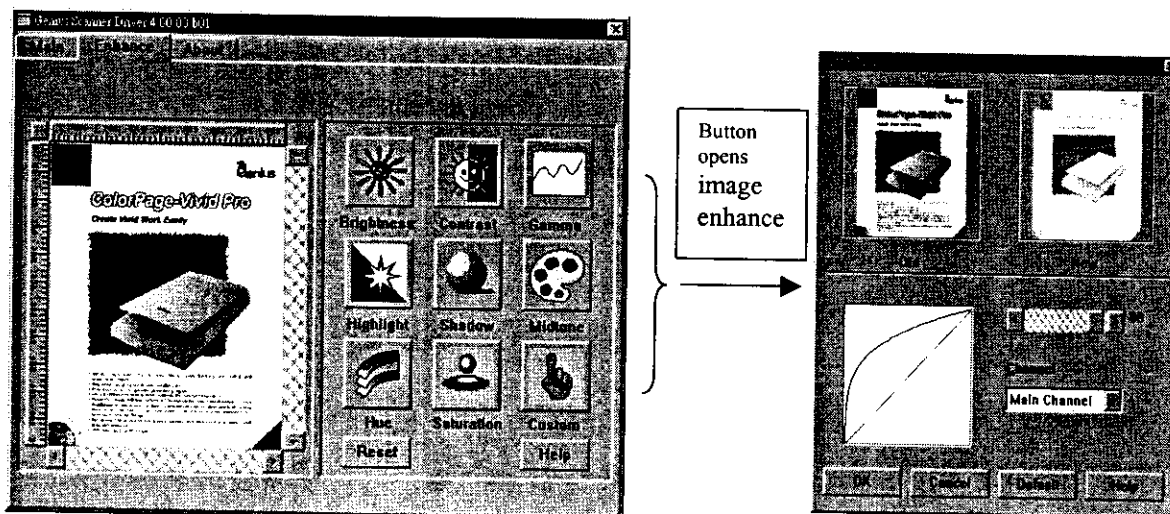
Scan the image into the prescan area.

Help button

Open the help file. Its content explains the user interface functions.

3. Enhance Folder

The Enhance folder contains controls buttons to enhance the image.



You can press the function button to open the dialog box. Adjust the following control changes the result in the working area.

There are two difference ways for adjusting the image effect:

1. Drag the curve to adjust the image effect.
2. Drag the scroll bar or click the arrow button to adjust the image effect.

以下均為按下按鈕換頁

and drag the mouse to the bottom-right area and release the mouse button. Now you will see a marquee on the preview image. When the mouse cursor moves to the edge of the scan frame, the cursor shape will change. This means you can move and size the scan frame. To move the scan frame, press the left mouse button and drag the scan frame to a new position and release the left mouse button. To create a new scan frame, click the left mouse button outside the existing scan frame. The size of the scan frame can not be moved or reduced when it is outside the image.

Hand Tool

The Hand tool lets you scroll through a preview image, allowing you to move parts of the image into view. Using the Magnifying Lens tool, you can move the image into view. To scroll the preview image, press the left mouse button, and to where you want to be move the mouse. After you have moved the image, release the left mouse button, the image should be smooth and no blinking should occur on the screen, and the ruler should change accordingly.

Color Pick

With the Color Pick tool, you can determine the color values for any pixel in an image. When you click on the Color Pick tool and pass over a pixel, the value of that pixel will be displayed in the status line (below the prescan area).

Magnifying Glass

The Magnifying Lens tool enlarges your view of the preview image, allowing you to set the scan frame with greater precision if you need to. Only your view of the image is changed; the actual size of the image remains unaffected. Each click magnifies by a factor of 2. Thus, the magnification levels increase from 100% to a maximum of 800%. Click on the magnifying glass tool in the tool bar to select this tool. After you select this tool the icon should indicate it is being used. To increase the magnification level, click the left mouse button.

Reduce Scale

Press this button to scale down one level. For example, if the zoom scale is 700%, press this button and the scale will be reduced to 600%.

Scan Size

CONTENT

1. USER INTERFACE LAYOUT	1
2. MAIN FOLDER	2
3. ENHANCE FOLDER	4
4. ABOUT FOLDER	10