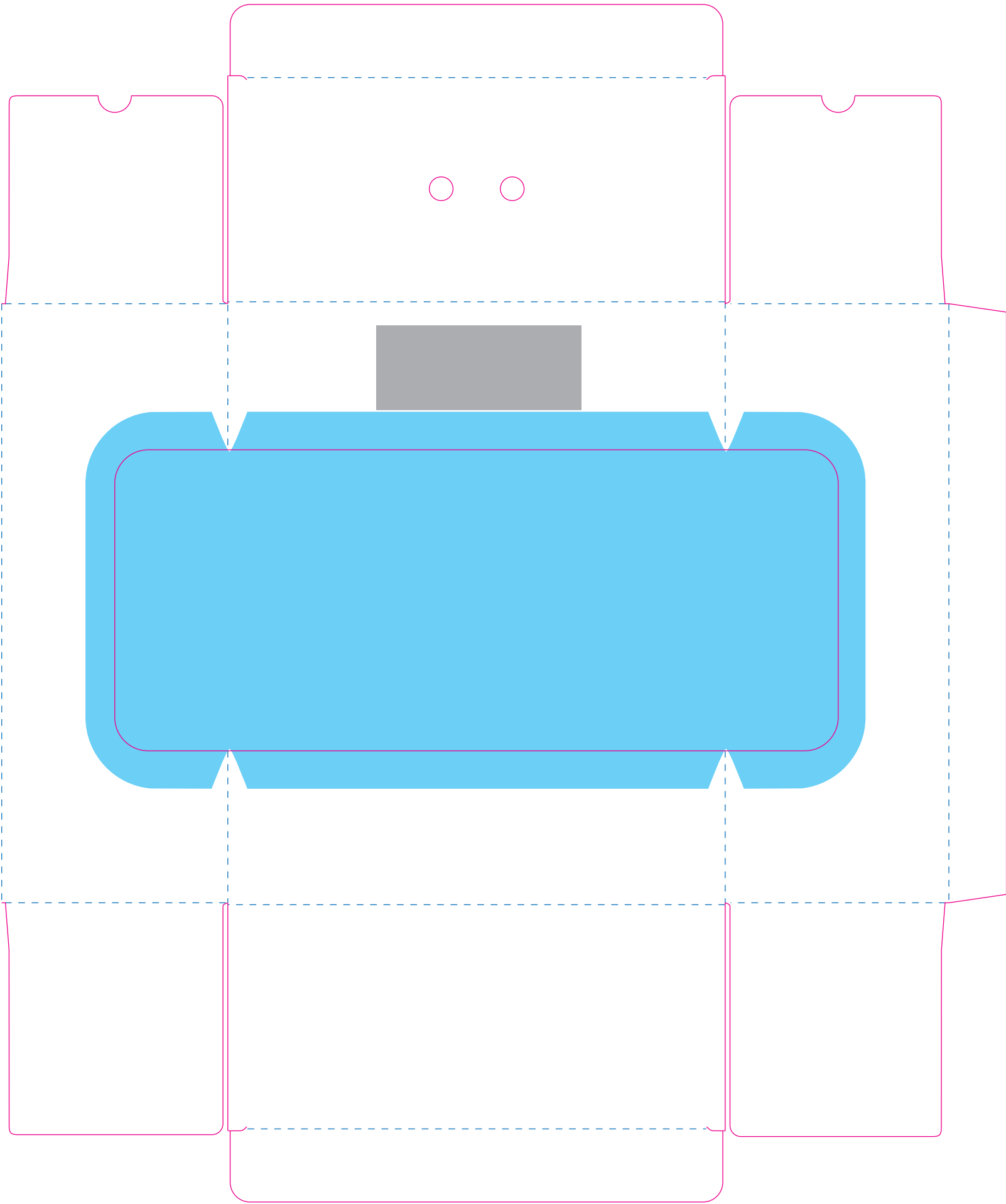




Display Box (Exterior)



Display Box (Interior)

PRINT SPECIFICATIONS

CARDBOARD: .49MM COPPER PAPER (400g)  
• WHITE BOTH SIDES  
DO NOT SCALE (1:1)

DO NOT MATCH INKS FROM THIS PRINTOUT — USE ACTUAL PANTONE CHIPS

4 COLOR PROCESS + 2 LINE COLORS  
CMYK  
PMS 2069 C  
PMS 877 METALLIC

FOIL STAMP:  
METALLIC SILVER

FINISH COAT:  
SATIN AQUEOUS FLOODCOAT

DO NOT PRINT:  
DIELINES (DO NOT PRINT)  
FOLDS (DO NOT PRINT)  
BLEED (DO NOT PRINT)  
CALLOUTS (DO NOT PRINT)  
WINDOW (DO NOT PRINT)  
ADHESIVE (DO NOT PRINT)

The concepts, depictions and information in this document or drawing are CONFIDENTIAL and constitute intellectual property of SRP Companies. Any use thereof, and any copying or distribution of the contents, without the express written permission of SRP Companies, is strictly prohibited. Use and distribution authorized under and pursuant to a written non-disclosure and/or confidentiality agreement in effect between SRP Companies and the recipient is permitted.	Drawn SJR	Description: 24/7 Wireless Sound Pods	Revision A	Date 9-10-19
	Part Number 160478			
	Pack Out Dimensions 4.125" L x 1.25" W x 5.5" H			