

## Wi-Fi Outdoor Dimmer Plug

• WF96SD •

### Meet your new smart Plug !



Plug x 1  
Screw x 1  
Plastic Anchor x 1

### IMPORTANT!

**This unit is suitable for outdoor use in damp locations.  
Do not expose to rain or immerse in water.**

### (A) Manual / Program button

Single press: manually turn on/off your device.

Hold: adjust brightness.

### RGB LED indicator

- Sky-blue: Network configuration mode
- Blue: Light status indicator
- Red: Network Failure/Overloading Warning
- Purple: AP Network configuration mode

### (B) Dimmer Outlet

This is your smart outlet that will be included in your smart home.

### (C) Protector

Insert in connector when not in use.

**For outdoor use  
IP65 Rated**

### Introduction

The EVA LOGIK WF96SD is a 400W MAX Loading smart dimmer plug designed for use seasonal and landscape lighting, porch light, and other indoor and outdoor plug-in small appliances. It's compatible with dimmable LED, halogen, incandescent, and fluorescent bulbs. Works with Amazon Alexa, Google Assistant. You can use the free App--Smart Life, or voice control by Alexa and Google Assistant to operate your devices in your home.

### Specifications

Power: 120VAC, 60Hz

Item Size: 56\*80\*39mm

Loading : 400W

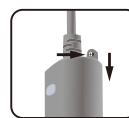
Wireless Frequency: 2.4GHz

Wireless Standard: IEEE802.11b/g/n

Operating Temperature: -4° F~122° F



The plug is designed to be angled 45 degrees, allowing you to make the most of your home wall outlet.



Use our screws and anchor to lock it in the wall.(optional)



Overloading protection is protection against overheating of the protected equipment. When the device's temperature is high, the LED will light up in red and cut down the power. Please power off the device and use it after the temperature of the device drops.



When the LED is purple (AP mode), please press the button 3 times quickly until the LED change to Sky-blue and LED blinks--Back to EASY MODE.

**NOTE:** Do not plug an extension cord in this smart plug.



### APP Connection



**QR code**



**Smart Life**

### Note:

Your device needs to be installed in the network coverage of your home router.

1. Please scan the QR code to download the application "Smart Life".
2. If you cannot download Smart Life app, please search "Smart Life" on Google Play (for Android phone) or Apple Store (for iOS phone) to download.

After you download the Smart Life App and register a new account, please follow the instructions below to set up your smart switch.

3. The smart switch can be also used with **Amazon Echo** and **Google Home**. Please scan the QR code below and follow the instructions if you have any trouble pairing with them.

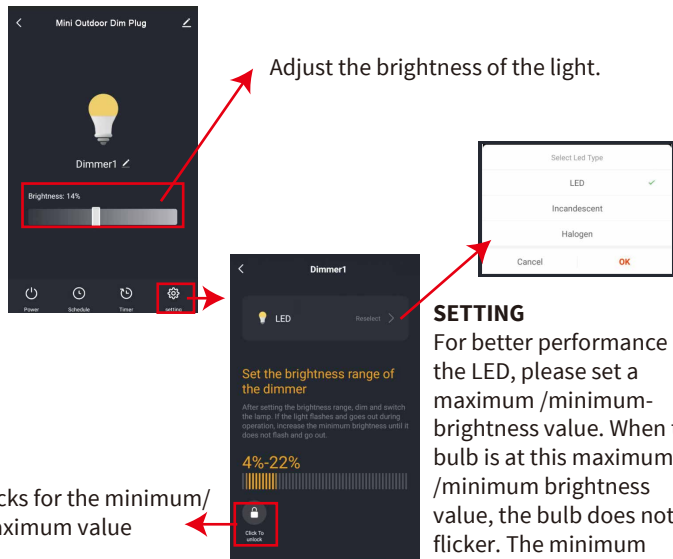
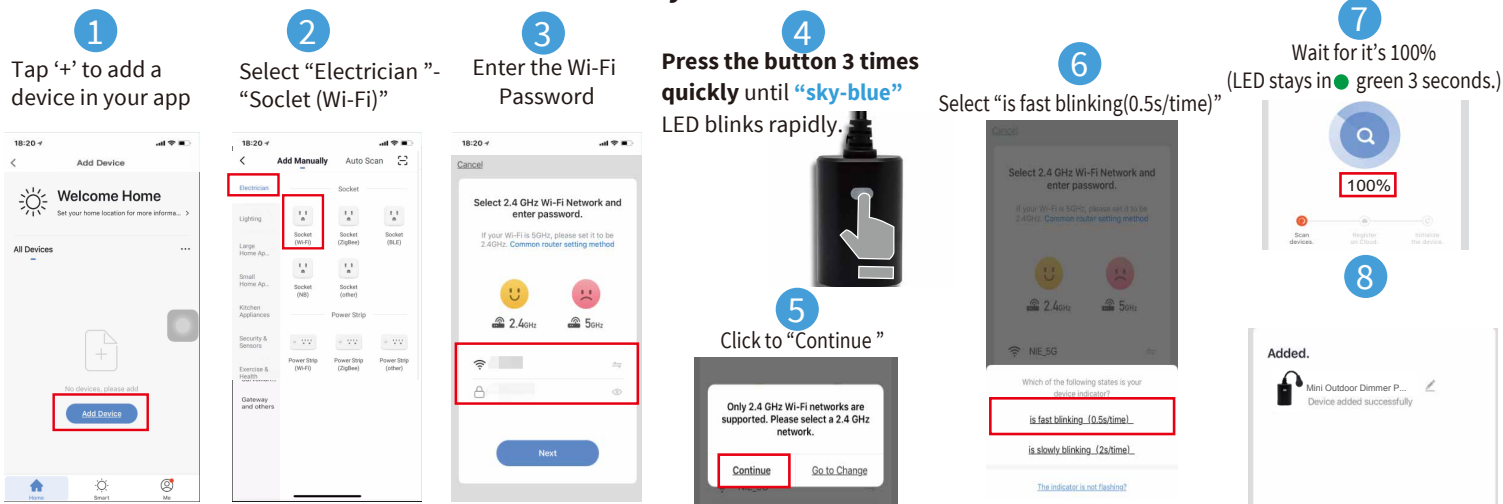


**Amazon-Echo**



**Google-Home**

## ► Easy Mode ◀



Adjust the brightness of the light.

### SETTING

For better performance of the LED, please set a maximum /minimum-brightness value. When the bulb is at this maximum /minimum brightness value, the bulb does not flicker. The minimum brightness of different bulbs may be different.

- **Restores State after Power Failure** (This parameter can access you to set the plug to be on/off after power failure.)  
Value=0 The plug is OFF regardless of the state prior to power failure.  
Value=1 The plug is ON regardless of the state prior to power failure  
Value=2 (default) Memory state before power failure This switch will be return to state prior to the power failure after power is restored.

#### Operation: Quickly press button 8 times.

Please note: the switching of each value is in order, a quick press button 8 times will switch once. eg: Switching from value 0 to value 2 needs 2 switchings.

- **Light off State Setting** (This parameter can access you to set the light fade out or off immediatly.)

Value=1 (default) Fade out

Value=2 Instantaneous off

#### Operation: Quickly press button 10 times

Please note: the switching of each value is in order, a quick press button 10 times will switch once. eg: Switching from value1 to value 2 needs 1 switching.

### FCC warning:

This device complies with Part 15 of the FCC Rules. Operation is subject to the following two conditions:

- (1) this device may not cause harmful interference, and
- (2) this device must acceptany interference received, including interference that may cause undesired operation.

changes or modifications not expressly approved by the party responsible for compliance could void the user's authority to operate the equipment.  
**NOTE:** This equipment has been tested and found to comply with the limits for a Class B digital device, pursuant to Part 15 of the FCC Rules. These limits are designed to provide reasonable protection against harmful interference in a residential installation. This equipment generates, uses and can radiate radio frequency energy and, if not installed and used in accordance with the instructions, may cause harmful interference to radio communications. However, there is no guarantee that interference will not occur in a particular installation. If this equipment does cause harmful interference to radio or television reception, which can be determined by turning the equipment off and on, the user is encouraged to try to correct the interference by one or more of the following measures:

- Reorient or relocate the receiving antenna.
- Increase the separation between the equipment and receiver.
- Connect the equipment into an outlet on a circuit different from that to which the receiver is connected.
- Consult the dealer or an experienced radio/TV technician for help.

### FCC Radiation Exposure Statement:

This equipment complies with FCC radiation exposure limits set forth for an uncontrolled environment.

This transmitter must not be co-located or operating in conjunction with any other antenna or transmitter.

This equipment should be installed and operated with minimum distance 20cm between the radiator& your body.

### ⚠ CAUTION - PLEASE READ!

This device is intended for installation in accordance with the National Electric Code and local regulations in the United States, or the Canadian Electrical Code and local regulations in Canada. If you are unsure or uncomfortable about performing this installation consult a qualified electrician.

### ⚠ MEDICAL EQUIPMENT

Please DO NOT use this plug to control Medical or Life Support equipment. This device should never be used to control the On/Off status of Medical and/or Life Support equipment.

### ⚠ OTHER WARNINGS

Risk of Fire  
Risk of Electrical Shock  
Risk of Burns