

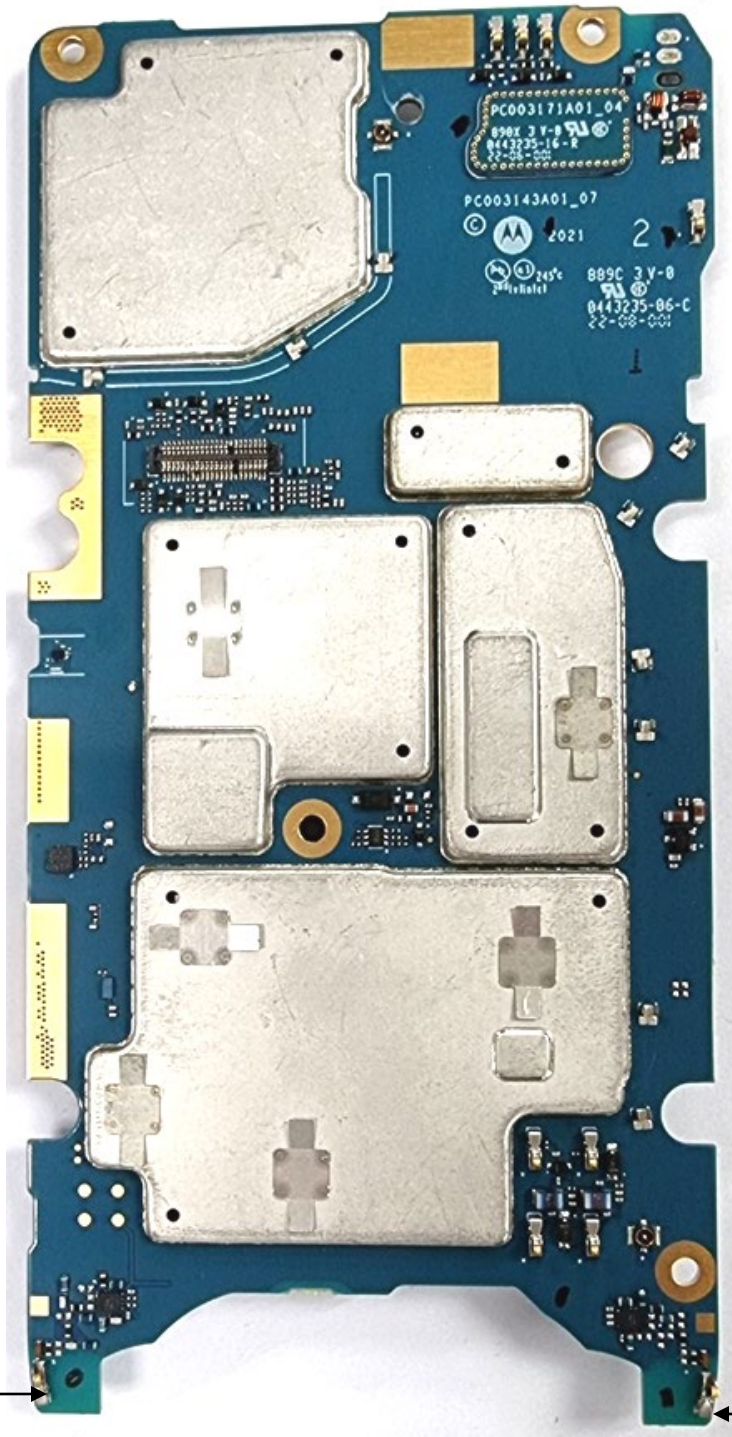
**EXHIBIT 9****Internal Photographs**

(Pursuant to FCC Part 2.1033(b)(7), 2.1033(c)(12) and RSP 100 Annex C)

The following photographs are attached.

**Exhibit**

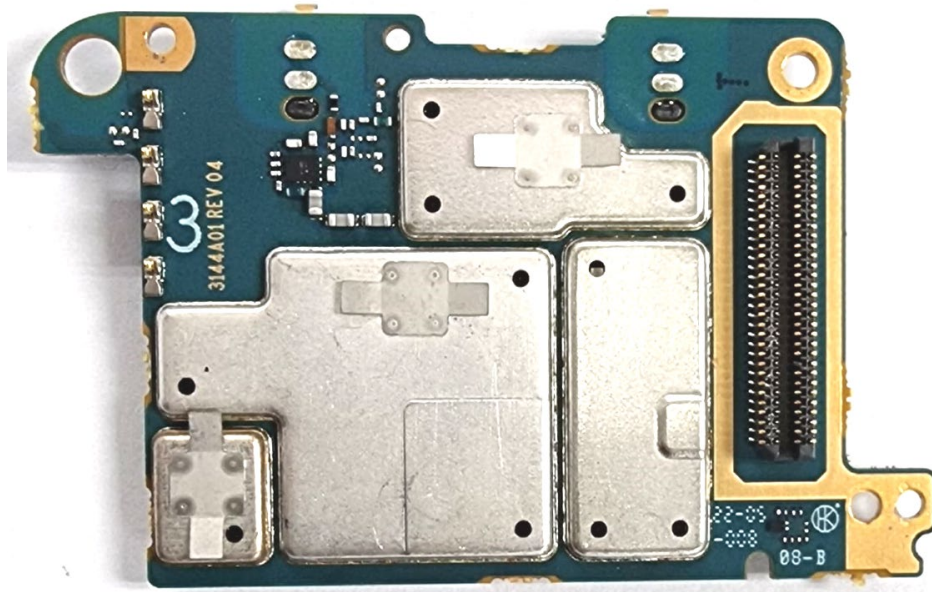
- |  |    |
|--|----|
| 1. LMR RF board <u>with</u> Shields (Top)                      | 9A |
| 2. LTE RF board <u>with</u> Shields (Top)                      | 9B |
| 3. AP board <u>with</u> Shields (Top)                          | 9C |
| 4. LMR RF board <u>without</u> Shields (Top)                   | 9D |
| 5. LTE RF board <u>without</u> Shields (Top)                   | 9E |
| 6. AP board <u>without</u> Shields (Top)                       | 9F |
| 7. LMR RF board <u>with</u> Shields (Bottom)                   | 9G |
| 8. LTE RF board <u>with</u> Shields (Bottom)                   | 9H |
| 9. AP board <u>with</u> Shields (Bottom)                       | 9I |
| 10. LMR RF board <u>without</u> Shields (Bottom)               | 9J |
| 11. LTE RF board <u>without</u> Shields (Bottom)               | 9K |
| 12. AP board <u>without</u> Shields (Bottom)                   | 9L |
| 13. RF boards <u>with</u> chassis and housing for (Front Side) | 9M |
| 14. Chassis and housing (Back Side)                            | 9N |



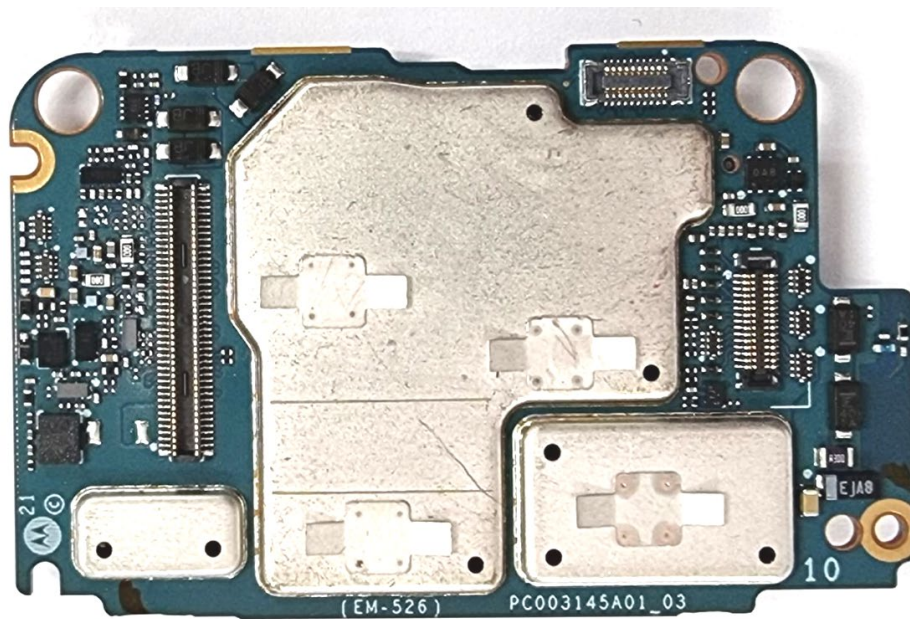
LB and B48  
Diversity

HB Diversity  
Antenna

**Exhibit 9A:** LMR RF board with Shields (Top)



**Exhibit 9B:** LTE RF board with Shields (Top)



**Exhibit 9C:** AP board with Shields (Top)



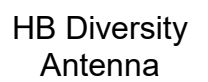
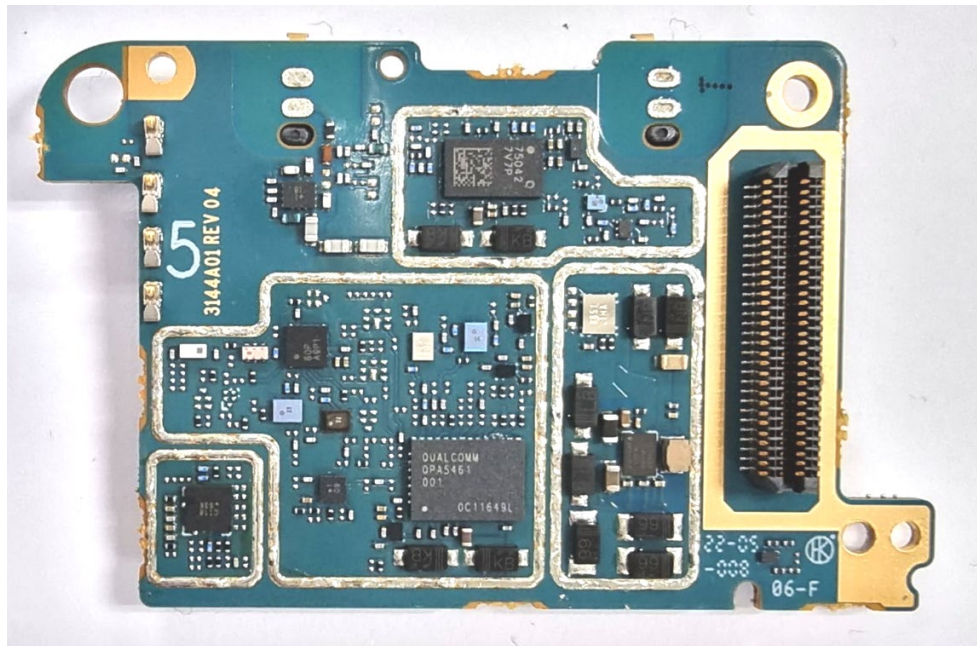
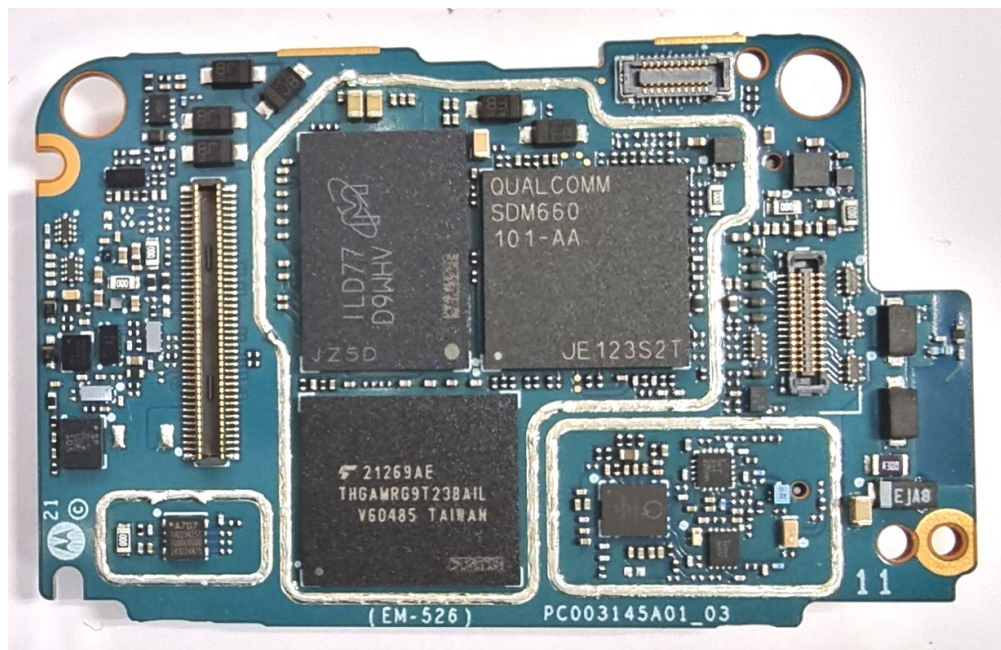


EXHIBIT 9  
SHEET 4 OF 11

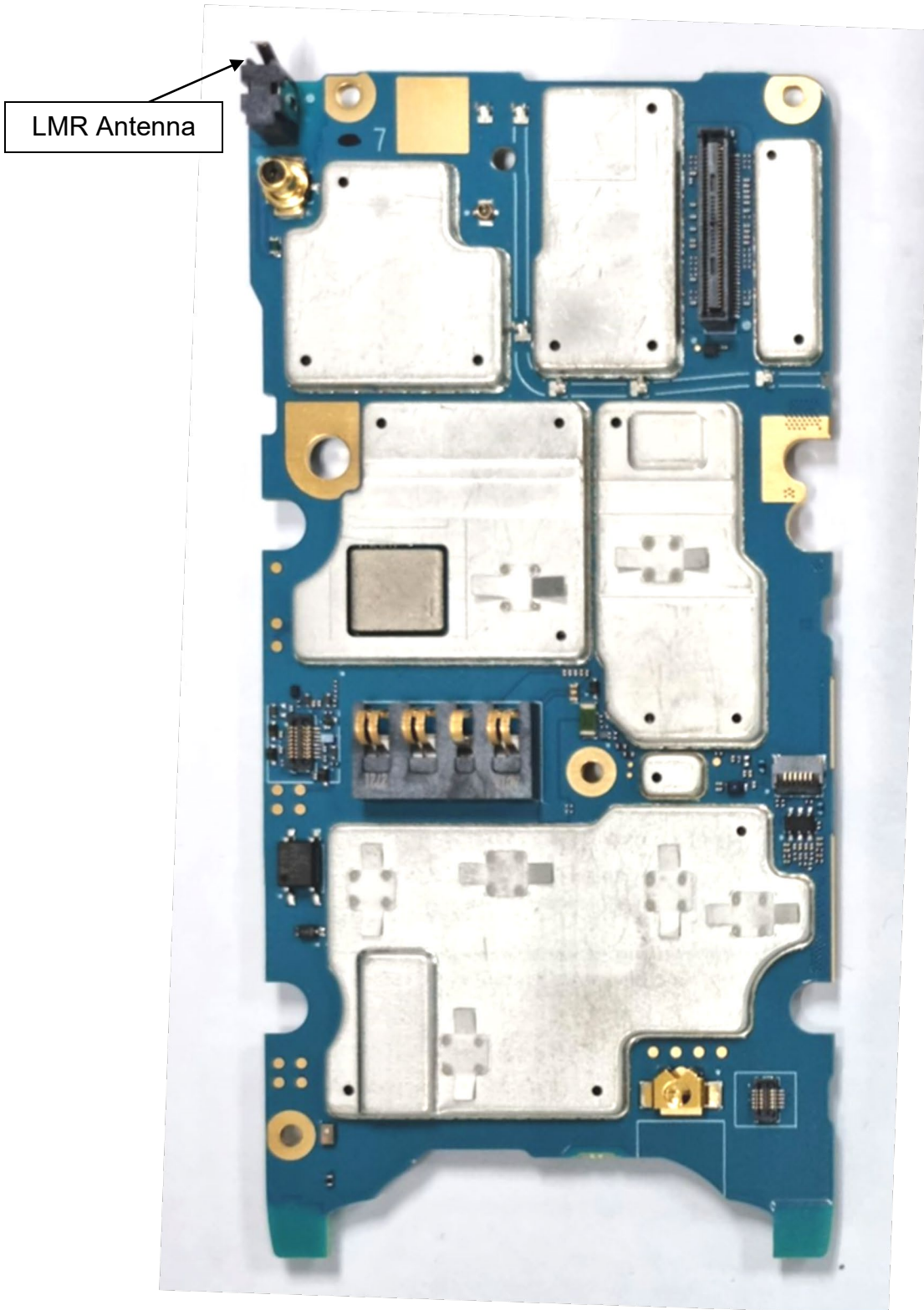


**Exhibit 9E:** LTE RF board without Shields (Top)

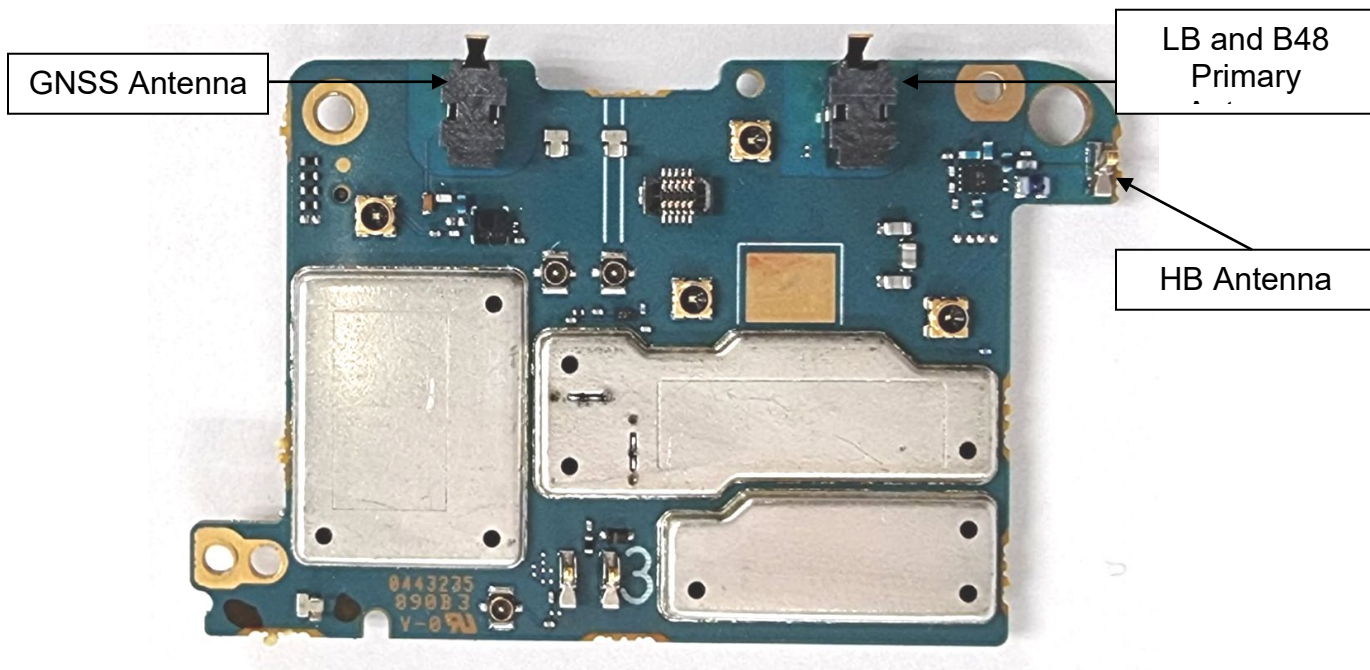


**Exhibit 9F:** AP board without Shields (Top)

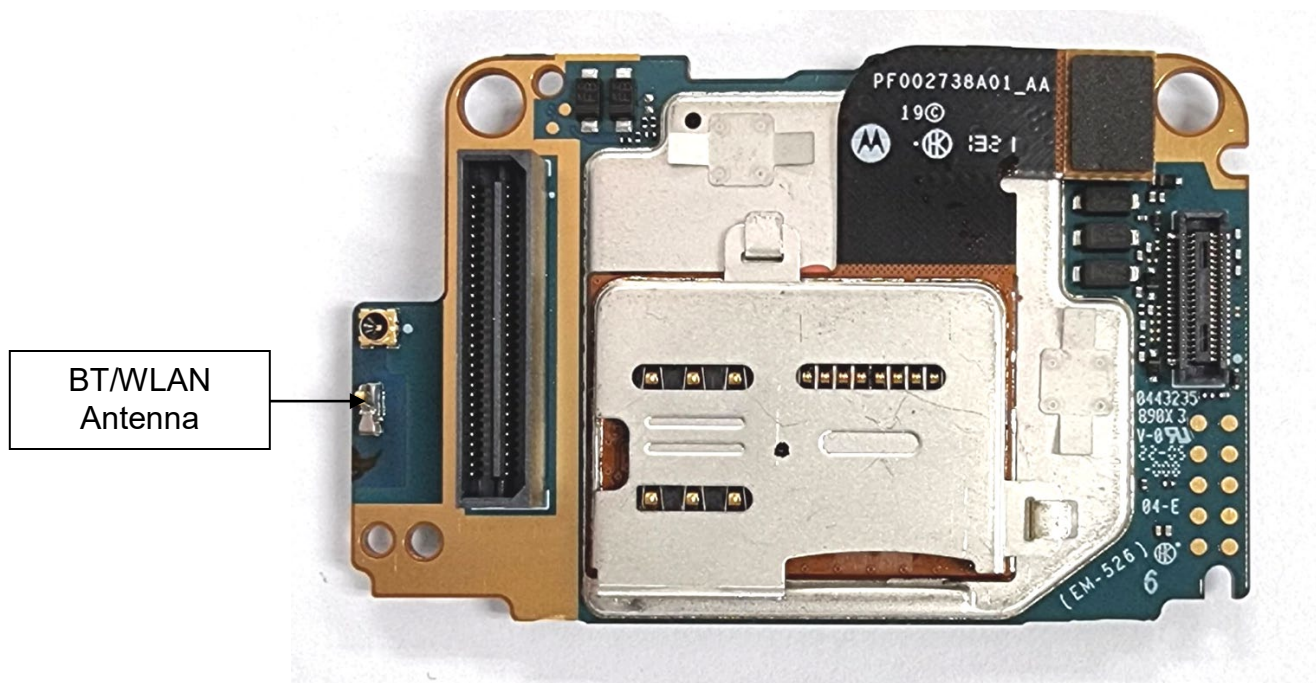




**Exhibit 9G:** LMR RF board with Shields (Bottom)

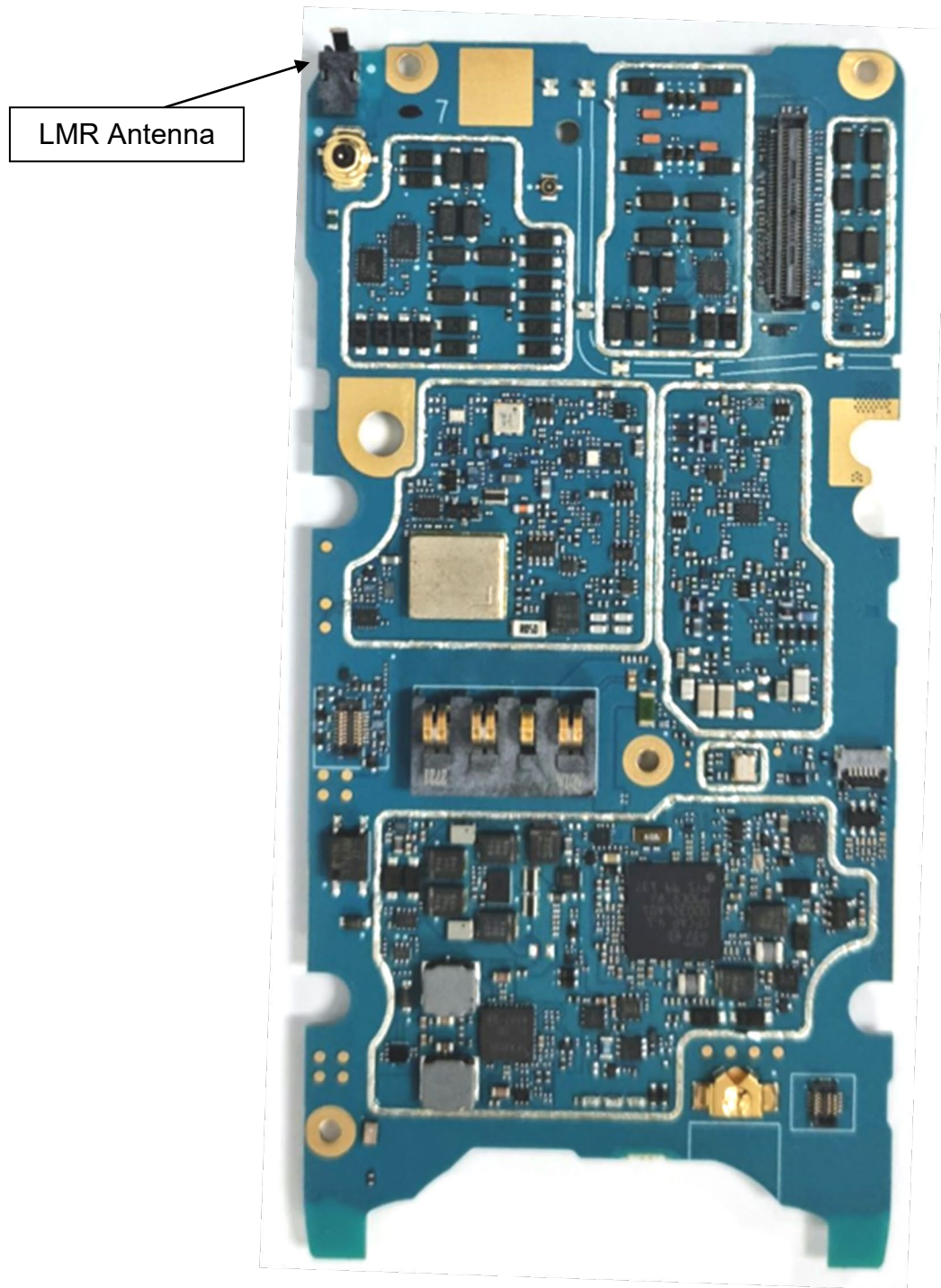


**Exhibit 9H:** LTE RF board with Shields (Bottom)



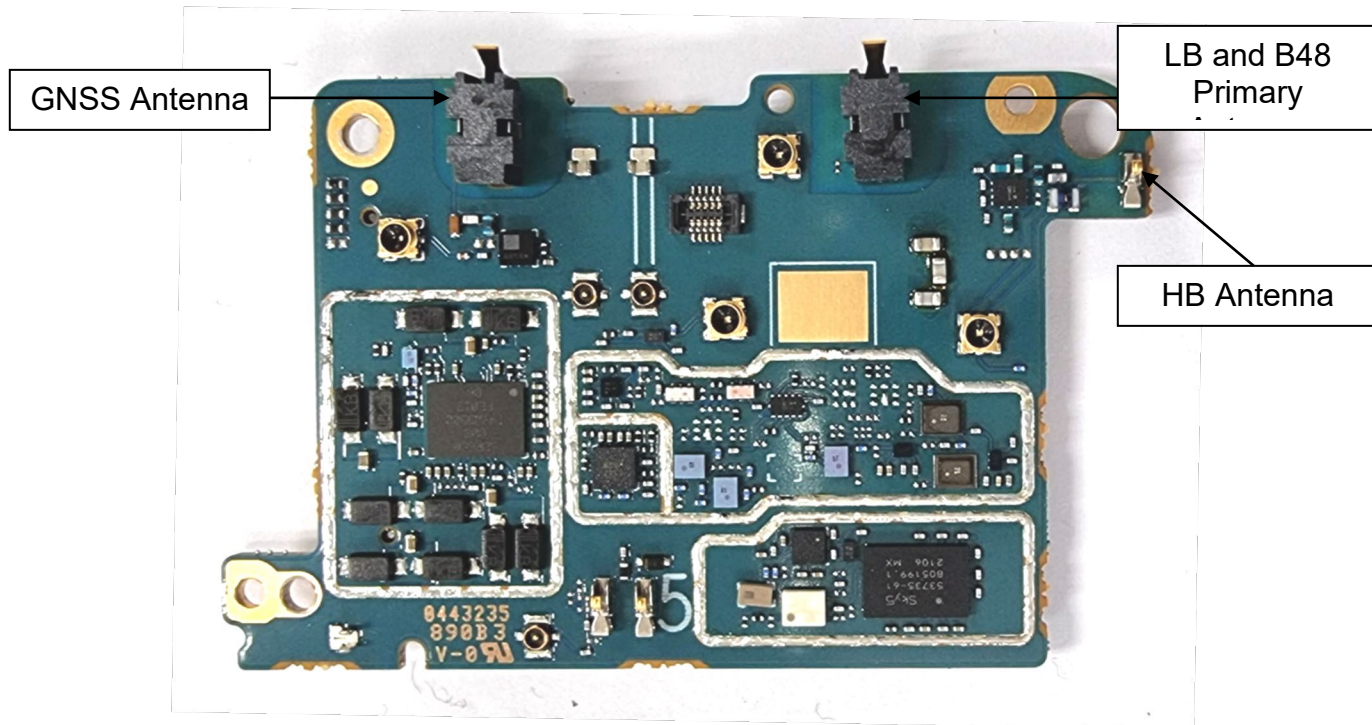
**Exhibit 9I:** AP board with Shields (Bottom)



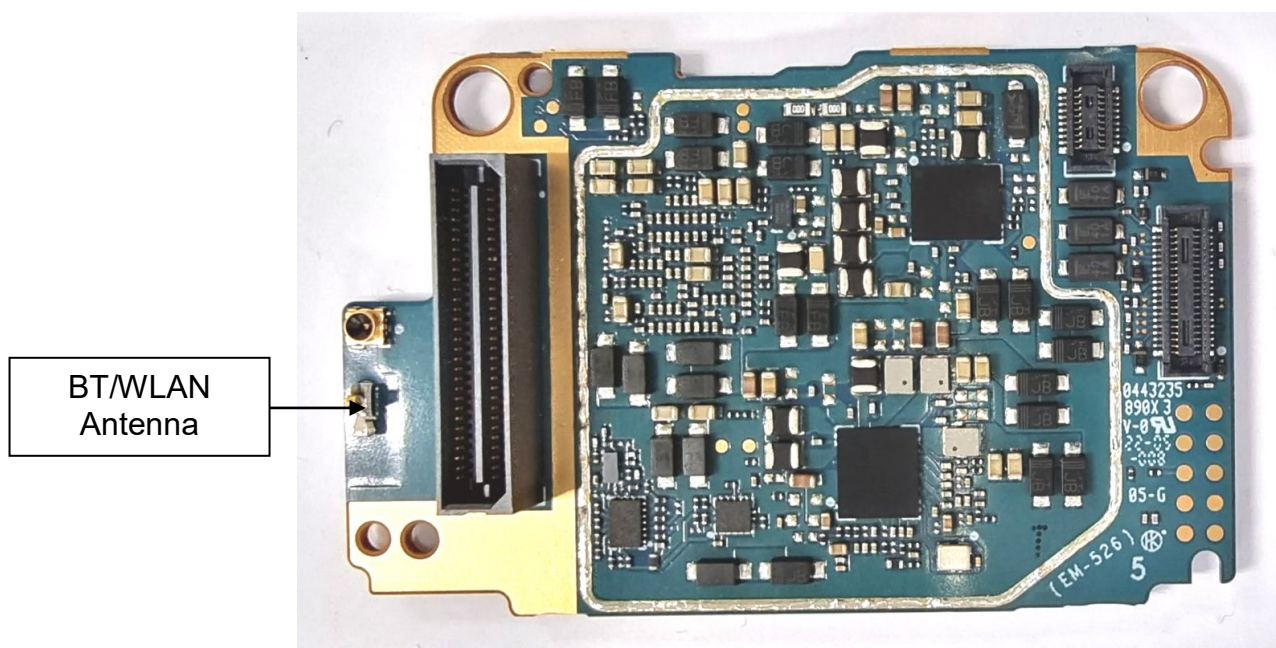


**Exhibit 9J:** LMR RF board without Shields (Bottom)





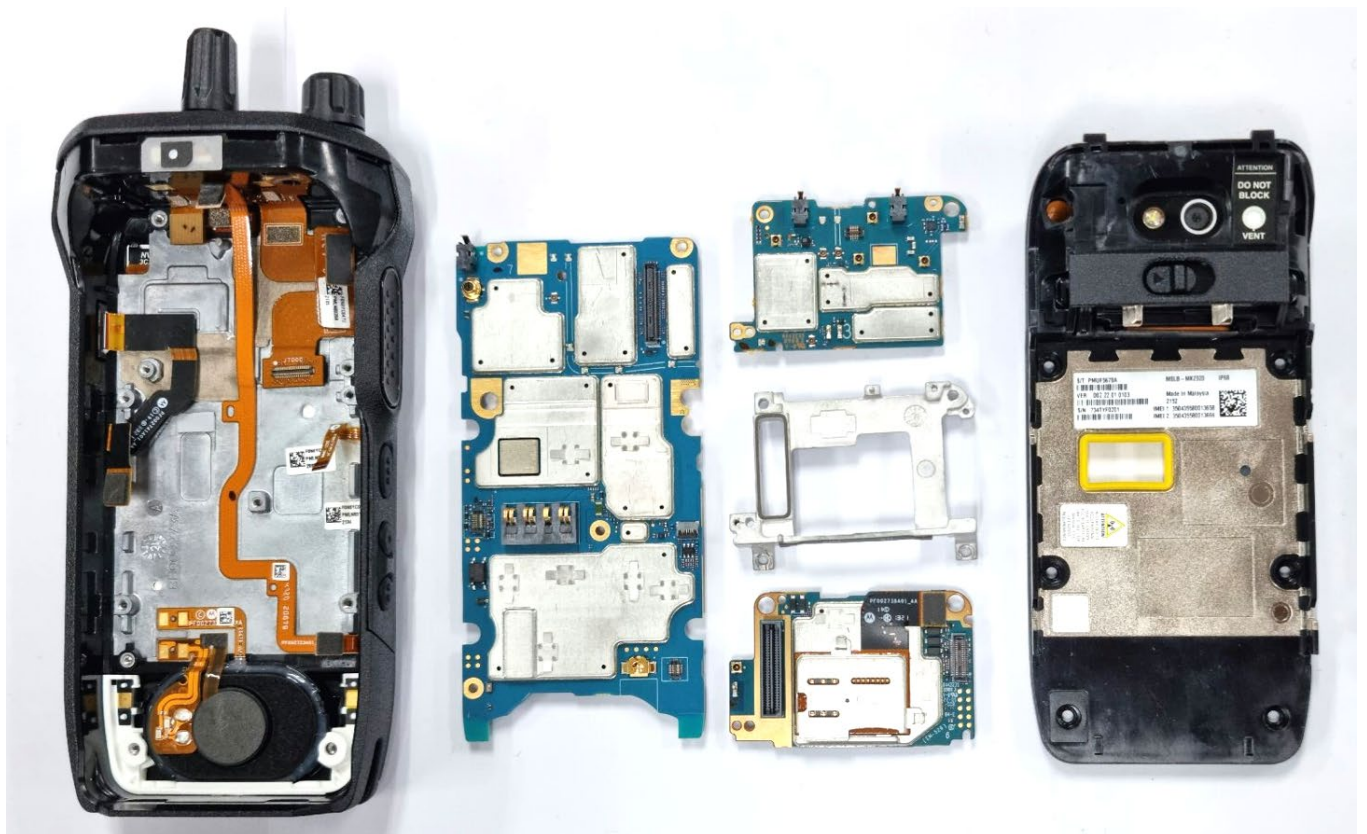
**Exhibit 9K:** LTE RF board without Shields (Bottom)



**Exhibit 9L:** AP board without Shields (Bottom)



**Exhibit 9M:** RF boards with chassis and housing for (Front Side)



**Exhibit 9N:** Chassis and housing (Back Side)

**\*\*\* END \*\*\***