

ARGOM^{TECH}



ACCURA10

USER GUIDE

Introduction

Introducing ArgomTech's latest innovation: the Smart Scale from our Health and Wellness Series. Designed to fit seamlessly into your daily life, this smart scale offers more than just a weight measurement—it provides a detailed view of your overall health.

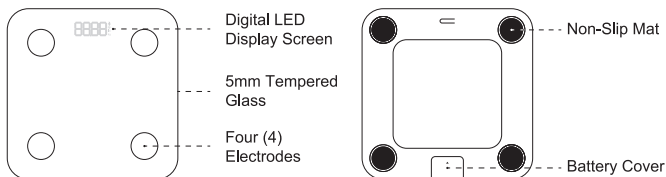
Our Smart Scale goes beyond basic weight tracking by measuring body fat percentage, muscle mass, and other key metrics. Each time you step on the scale, your data is automatically recorded and synchronized, giving you a clear view of your progress over time.

The accompanying app, available for both iOS and Android, makes managing your health straightforward. It supports up to 10 user profiles, so the whole family can track their health and stay motivated. With the ArgomTech Smart Scale, taking control of your wellness is easier and more integrated into your everyday routine.

Package Content

1x Smart BT body scale - Quick Start Guide

Product Identification



Digital LED Display Screen: The LED display provides clear and easy-to-read measurements, with bright, backlit digits that ensure visibility in various lighting conditions. It dynamically updates to reflect the most recent data and offers a user-friendly interface for monitoring your health metrics.

Four High-Sensitivity Electrodes: Equipped with four high-sensitivity electrodes, the scale ensures accurate and consistent readings. These electrodes measure various body metrics with precision and reliability.

Non-Slip Mat: The anti-slip pad ensures that the scale remains securely in place during use. Its non-slip surface enhances safety and accuracy by preventing movement or sliding.

Battery Cover: The cover securely holds 3xAAA batteries, preventing leaks and ensuring easy replacement for optimal scale performance.

Durable 5mm Tempered Glass: Constructed with 5mm tempered glass, this scale is designed for durability and safety. The toughened glass surface is resistant to scratches and impact, providing a reliable platform for daily use.

Product Specifications

- Scale Dimensions: 28 × 28 × 25cm
- Capacity: 180kg / 400lb
- Division: 0.05kg / 0.2lb
- Display: LED, 59 × 22mm
- Glass: 5mm tempered glass
- Units: kg, lb
- Power Supply: 3 × AAA batteries (not included)
- Net Weight per Scale: 1.25kg
- Connection: BT BLE 4.0
- App: ArgomTech
- Equipment Requirements: Android 4.3 and above; iOS 8.0 and above
- Auto Function: Step-on activation, Auto-off
- Smart Reminders: Low Battery, Overload

Additional Features

Auto On/Off: The scale features an automatic on/off function that conserves battery life. The device turns on automatically when weight is detected and switches off after a short period of inactivity.

Step-On Technology: Step-On Technology allows you to get instant measurements without needing to press any buttons. Simply step onto the scale, and it will automatically detect your presence and display your weight.

High Accuracy: The scale is equipped with advanced sensors for high accuracy in measurements. It provides precise readings of weight, body fat percentage, BMI, and other biometric data, helping you track your health effectively.

Wireless Syncing: With wireless syncing capabilities, the scale easily transfers data to your smartphone or tablet. This feature ensures that your measurements are always up-to-date and accessible through the connected app.

Supports Multiple Users: The scale can accommodate multiple users, making it suitable for families or shared spaces. Each user can maintain their own profile and track their individual health data.

Goal Management: Set and track your health goals with the scale's integrated goal management feature. Monitor your progress and adjust your targets based on your performance and metrics.

Compatible with 3rd Party Health Apps: The scale is compatible with popular health apps such as Google Fit, Apple Health, and Fitbit. Sync your data with these platforms for a comprehensive view of your health and fitness journey.

Data Graphs & Records: View your health data through detailed graphs and records. The scale presents trends and historical data to help you understand your progress and make informed decisions about your wellness.

Share Data with Friends: Easily share your health data with friends and family. This feature allows you to connect with others and stay motivated by sharing your achievements and progress.

Getting Started

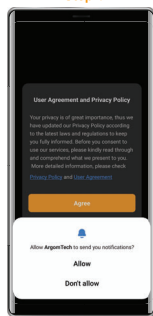
Download the ArgomTech App from Google Play Store or Apple App Store. Scan the QR code below with your mobile device's camera or QR code app for quick access.



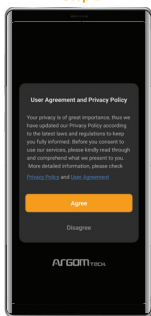
Note: This installation guide uses the Android version.

The iOS platform may differ slightly, but the same concepts apply

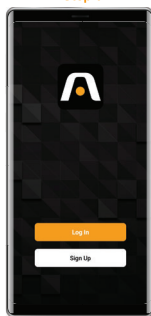
Step 1



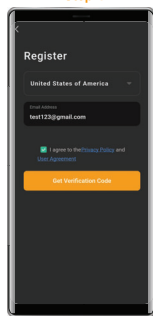
Step 2



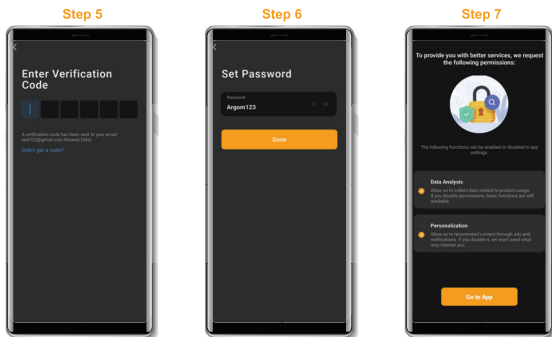
Step 3



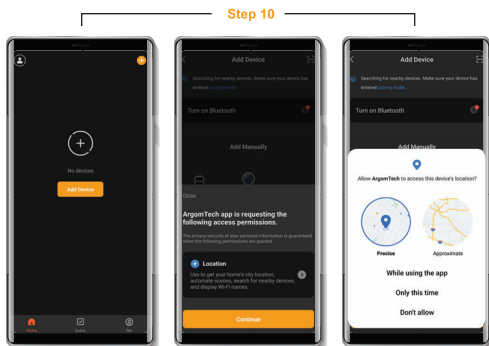
Step 4



1. Open the app. When launching it for the first time, you'll need to grant certain permissions. The first prompt will request access to Notifications. Tap 'Allow'
2. Then, Agree to the User Agreement and Privacy Policy.
3. You must register an account to access all the camera features. Tap on Sign Up.
4. Select your region from the drop-down menu, then enter the email address you'd like to register with. Once done, click the agreement checkbox, then click 'Get Verification Code'.



5. A verification code will be sent to the registered email. Enter this number on the prompted screen.
6. Set a password between 6-20 characters, using a mix of letters and numbers. Once complete, tap 'Done.'
7. A prompt to enable permissions for data analysis and personalized recommendations will appear. You can disable this or leave it enabled by default. Tap 'Go to App.'
8. Now that the app is properly configured, insert 3 AAA batteries into the smart scale. Locate the battery compartment on the back of the scale. Open the compartment cover, insert the batteries with the correct polarity, and securely close the cover.
9. The smart scale will turn on automatically when it detects weight. To activate the scale, step onto it or place a suitable weight on the surface. The display will light up, indicating that it has powered on and is ready for pairing.



10. In the app, tap 'Add Device.' You will be prompted to grant location permissions. Tap 'Continue,' then select 'While using the app.'