

说明书要求:

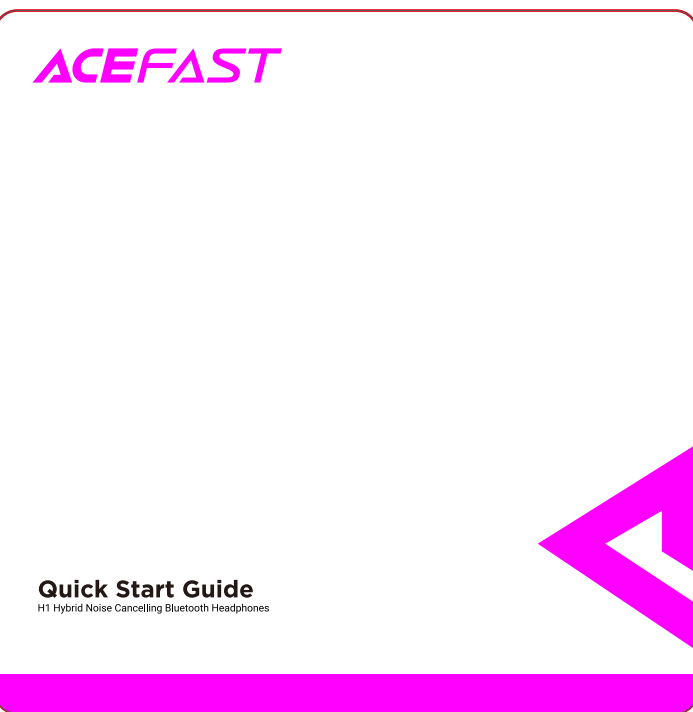
胶装, 封面157双铜过哑胶

正面背面印刷两个色, 里面黑白色。

内容80g轻涂纸尺寸: 93x93mm




10315c金属色




正面封面


Technical Parameters		EN
Product model	H1	
Wearing style	over-ear	
Bluetooth pairing name	ACEFAST H1 Hybrid	
Bluetooth version	Bluetooth V5.0	
Audio decoding protocol	SBC/AAC	
Bluetooth transmission distance	100m	
Speaker unit	40mm	
Frequency response range	20Hz-20kHz	
Sensitivity	95±3dB	
Mic sensitivity	42±3dB	
Noise reduction depth	35dB(AEC)	
Music time	about 50 hours (BT)/35 hours (BT+ANC)	
Charging time	about 1 hour	
Battery capacity	500mAh	
Material	aluminum alloy, ABS, PU	
Net weight	about 225 grams	
Overall size	194 x 211 x 48 mm	




Headphones
x1




Storage box
x1



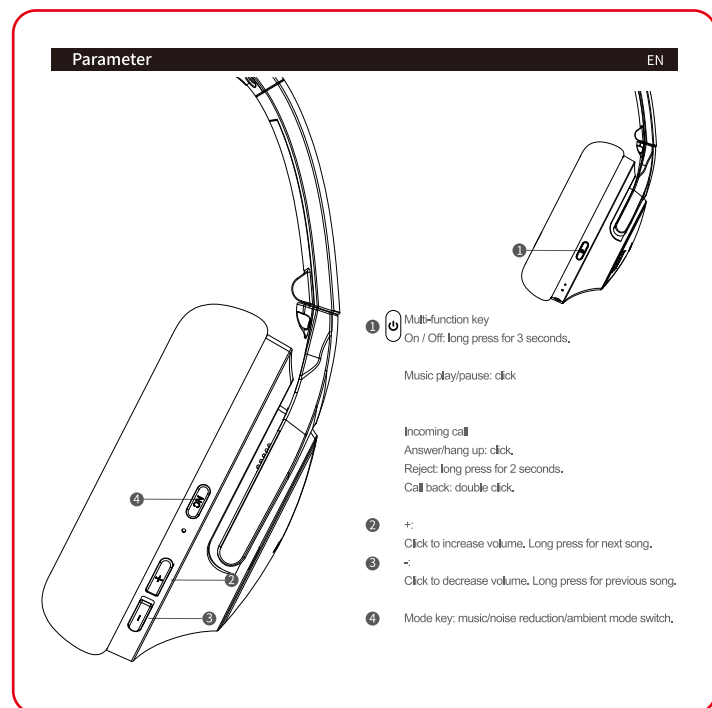
USB-C cable
x1



Audio cable
x1



Manual
x1



- Multi-function key
- On / Off long press for 3 seconds,
Music playback: click
- Answering call
Answering up: click,
Reject long press for 2 seconds,
Call back: double click.
- Volume adjustment
- Click to increase volume, Long press for next song,
Click to decrease volume, Long press for previous song,
Click to increase volume, Long press for next song,
Click to decrease volume, Long press for previous song,
Click to increase volume, Long press for next song,
Click to decrease volume, Long press for previous song,
Click to increase volume, Long press for next song,
Click to decrease volume, Long press for previous song,

Bluetooth pairing		EN
When using this product for the first time, first pair the headphones with the phone. After the pairing is successful, an encrypted connection will be established between the headphones and the phone. The pairing method of the headphones and the phone is as follows:		
1. Make sure that the headphones are fully charged and turned on.		
2. Press and hold the [Multi-function key] for 3 seconds to turn on. The blue and red LED indicators flash alternately and headphones enter the pairing mode.		
3. Enable the Bluetooth function of the mobile phone, search for Bluetooth devices and find "ACEFAST H1 Hybrid", select and confirm the connection.		
Important note:		
After the pairing is successful and the phone is connected, a beep sound appears. If unsuccessful, the indicator light will flash alternately, please repeat the above pairing steps.		
Use this headphones on, usually when there are no obstacles (including your body parts) between the headphones and the phone, the performance and sound quality will be better.		
Reconnect the headphones to the paired device:		
1. Turn on the mobile phone Bluetooth device.		
2. Press and hold the [Multi-function key] for 3 seconds to turn on.		
3. The headphones will automatically reconnect to the last connected mobile phone Bluetooth device.		
Important note:		
1. If the Bluetooth function of the mobile phone Bluetooth device is enabled after turning on the headphones, it may not be automatically connected. You must manually reconnect the headphones and mobile phone Bluetooth devices.		
2. If the mobile phone Bluetooth device cannot automatically reconnect, please try to reconnect manually on the mobile phone Bluetooth device, click the headphones name under Bluetooth settings.		
3. Within 10 minutes, if the headphones cannot find any connectable Bluetooth device within the effective range, it will automatically shut down.		

Product Features		EN
Answer the phone		
When a call comes in, press the [Multi-function key] once to answer the call.		
Reject the call		
When a call comes in, press and hold the [Multi-function key] for 2 seconds to reject the call.		
End the call		
During a call, short press the [Multi-function key] once to end the call.		
Last call redial		
When the phone is in standby, short press the [Multi-function key] twice to redial the last number dialed by the phone.		
Volume adjustment		
During a call or music playback, short press the [Volume +] key once to increase the volume by one level, and short press the [Volume -] key once to decrease the volume by one level.		
Music mode		
1. Short press [Multi-function key] once to pause or play music.		
2. Long press [Multi-function key] for 2 seconds to switch to the next song.		
3. Long press the [Multi-function key] for 2 seconds to switch to the previous song.		
Mode switching: short press the mode button once to switch between music mode reduction/ambient mode.		

Product Features		EN
LED indicator description		
1. The blue light flashes 3 times: power on.		
2. The red light flashes twice and goes out: turn off.		
3. Red and blue flash alternately: the headphones are in pairing mode.		
4. The red light flashes once in 5 seconds: the battery is low.		
5. Red light is always on: charging. The blue light is always on: device is fully charged.		
Bluetooth headphones battery reminder		
In operating systems above iOS 5.x, when your phone is paired with the headphones and connected, the headphones power will automatically be displayed on the status bar.		
When the headphones are low on battery, a beep will sound.		
This product is powered by a rechargeable battery. A new battery can only reach its best performance after two or three cycles of full charge and discharge. The battery can be charged and discharged repeatedly, but eventually it will become obsolete.		
If the product is placed in a place that is too hot or cold, such as in a heated car in summer or winter, the capacity and life of the battery will be reduced. Try to keep the battery temperature between 15°C and 25°C. This product's battery may be too cold or too hot to make it temporarily unable to work, even if the battery is fully charged, when the temperature is far below the heating point, the performance of the battery is particularly limited.		
Do not throw the battery into the fire to prevent the battery from exploding. Damaged batteries may also explode. Please dispose of batteries in accordance with local regulations. Please recycle the battery when possible. Do not dispose of the battery as household garbage.		
If severe swelling occurs, do not continue to use it, do not use the battery after it is immersed in water.		
If the product is not used frequently, please charge and discharge it once every three months to avoid battery damage if the battery is not used for a long time.		
If the battery is improperly replaced, there is a danger of explosion, and it can only be replaced with a battery of the same or equivalent type.		

Precautions		EN
Do not place the headphones in a place that is humid, full of dust, oily smoke or steam, or exposed to direct sunlight. Do not leave the headphones in the car for a long time. Otherwise, it may cause a malfunction.		
Depending on the radio wave conditions and the place where the Bluetooth device is used, the device may not work with mobile phones.		
Using the headphones to listen at high volume may affect your hearing. For traffic safety, please do not use the headphones while driving or cycling.		
Do not use headphones in places where the inability to hear environmental sounds will cause danger, such as railway crossings, railway station platforms, pedestrian crossings, and construction sites.		
Do not place heavy objects or apply pressure on the headphones, otherwise it may cause deformation of the headphones during long-term storage.		
The static electricity accumulated in the body may cause slight irritation in the ears. Wearing clothes made of natural materials can minimize the impact.		
Please use a soft dry cloth to clean the headphones.		
Do not expose the headphones to water. The headphones are not waterproof. Remember to observe the following precautions.		
Do not use the headphones in humid places or bad weather, such as rain or snow.		
Do not get the headphones wet. If you touch the headphones with wet hands, or put the headphones in damp clothing, the headphones will get wet and this may cause the headphones to malfunction.		
If you feel uncomfortable after using the Bluetooth device, stop using it immediately. If the problem persists, please contact your local dealer.		
If you have any questions or problems about the headphones that are not covered in this manual, please contact your local dealer.		

FCC		EN
This device complies with part 15 of the FCC Rules. Operation is subject to the following two conditions: (1) This device may not cause harmful interference, and (2) this device must accept any interference received, including interference that may cause undesired operation.		
Any changes or modifications not expressly approved by the party responsible for compliance could void the user's authority to operate the equipment.		
This equipment has been tested and found to comply with the limits for a Class B digital device, pursuant to part 15 of the FCC Rules. These limits are designed to provide reasonable protection against harmful interference in a residential installation. This equipment generates, uses and can radiate radio frequency energy and, if not installed and used in accordance with the instructions, may cause harmful interference to radio communications. However, there is no guarantee that interference will not occur in a particular installation. If this equipment does cause harmful interference to radio or television reception, which can be determined by turning the equipment off and on, the user is encouraged to try to correct the interference by one or more of the following measures:		
—Reorient or relocate the receiving antenna.		
—Increase the separation between the equipment and receiver.		
—Connect the equipment into an outlet on a circuit different from that to which the receiver is connected.		
—Consult the dealer or an experienced radio/TV technician for help.		
FCC Radiation Exposure Statement		
The device has been evaluated to meet general RF exposure requirements. The device can be used in portable exposure condition without restriction.		
This equipment complies with FCC radiation exposure limits set forth for an uncontrolled environment.		
This transmitter must not be co-located or operating in conjunction with any other antenna or transmitter.		

Warranty & Customer Support		EN
For questions, support, or warranty claims, contact us at the end below that corresponds with your region. Please include your Amazon order number and product model number.		
Amazon US users: support@acefast.com		
Amazon EU users: support@acefast.com		
Amazon UK users: support@acefast.com		
Amazon CA users: support@acefast.com		
Amazon JP users: support@acefast.com		
Other regions: support@acefast.com		
Please note: ACEFAST can provide after sales service for products purchased from any official ACEFAST store. If you have purchased from unauthorized, you can also contact them directly for service or warranty issues.		
Shenzhen Houshuai Technology Co., Ltd.		
Room 201, Xixun Building 2, No. 10, Xixun Road, Xixun Community,		
Longhua Street, Longhua District, Shenzhen, P.R. China		
Shenzhen, 518000, China		

背面封面