
SAR Test Report

Report No.: AGC00639150501FH01

FCC ID : ZL5B30

APPLICATION PURPOSE : Original Equipment

PRODUCT DESIGNATION : 3G Feature phone

BRAND NAME : CAT

MODEL NAME : B30

CLIENT : Bullitt Group

DATE OF ISSUE : June 10, 2015

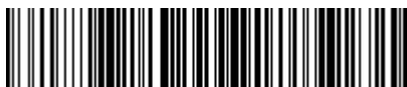
STANDARD(S) : IEEE Std. 1528:2003
IEEE Std. 1528a:2005
FCC 47CFR § 2.1093
IEEE/ANSI C95.1:1992

REPORT VERSION : V1.0

Attestation of Global Compliance(Shenzhen) Co., Ltd.

CAUTION:

This report shall not be reproduced except in full without the written permission of the test laboratory and shall not be quoted out of context.



Report Revise Record

Report Version	Revise Time	Issued Date	Valid Version	Notes
V1.0	/	June 10, 2015	Valid	Original Report

Test Report Certification

Applicant Name	:	Bullitt Group
Applicant Address	:	Unit 4, The Aquarium Kings Street, Reading, Berkshire RG1 4AN
Manufacturer Name	:	Leadsy International Development Co., Ltd.
Manufacturer Address	:	4F, BLDG B, HUAFENG INDUSTRIAL PARK, GUSHU, XIXIANG, BAO'AN DISTRICT, SHENZHEN, CHINA
Product Designation	:	3G Feature phone
Brand Name	:	CAT
Model Name	:	B30
Different Description		N/A
EUT Voltage	:	DC3.7V by battery
Applicable Standard	:	IEEE Std. 1528:2003 IEEE Std. 1528a:2005 FCC 47CFR § 2.1093 IEEE/ANSI C95.1:1992
Test Date	:	June 3, 2015 to June 8, 2015
Performed Location		Attestation of Global Compliance(Shenzhen) Co., Ltd. 2 F, Building 2, No.1-No.4, Chaxi Sanwei Technical Industrial Park, Gushu, Xixiang Street, Bao'an District, Shenzhen, China
Report Template		AGCRT-US-3G3/SAR (2015-05-01)

Tested By

Bobby Wang

Bobby Wang June 10, 2015

Checked By

Angela Li

Angela Li June 10, 2015

Authorized By

Solger Zhang

Solger Zhang June 10, 2015

TABLE OF CONTENTS

1. SUMMARY OF MAXIMUM SAR VALUE	5
2. GENERAL INFORMATION.....	6
2.1. EUT DESCRIPTION.....	6
3. SAR MEASUREMENT SYSTEM	8
3.1. THE DASY5 SYSTEM USED FOR PERFORMING COMPLIANCE TESTS CONSISTS OF FOLLOWING ITEMS.....	8
3.2. DASY5 E-FIELD PROBE	9
3.3. DATA ACQUISITION ELECTRONICS DESCRIPTION	9
3.4. ROBOT.....	10
3.5. LIGHT BEAM UNIT	10
3.6. DEVICE HOLDER	11
3.7. MEASUREMENT SERVER.....	11
3.8. PHANTOM.....	12
4. SAR MEASUREMENT PROCEDURE.....	13
4.1. SPECIFIC ABSORPTION RATE (SAR)	13
4.2. SAR MEASUREMENT PROCEDURE	14
4.3. RF EXPOSURE CONDITIONS.....	16
5. TISSUE SIMULATING LIQUID.....	18
5.1. THE COMPOSITION OF THE TISSUE SIMULATING LIQUID.....	18
5.2. TISSUE DIELECTRIC PARAMETERS FOR HEAD AND BODY PHANTOMS.....	18
5.3. TISSUE CALIBRATION RESULT.....	19
6. SAR SYSTEM CHECK PROCEDURE.....	20
6.1. SAR SYSTEM CHECK PROCEDURES.....	20
6.2. SAR SYSTEM CHECK.....	21
7. EUT TEST POSITION	22
7.1. DEFINE TWO IMAGINARY LINES ON THE HANDSET.....	22
7.2. CHEEK POSITION	23
7.3. TITLE POSITION	23
7.4. BODY WORN POSITION.....	24
8. SAR EXPOSURE LIMITS	25
9. TEST EQUIPMENT LIST	26
10. MEASUREMENT UNCERTAINTY	27
11. CONDUCTED POWER MEASUREMENT	30
12. TEST RESULTS	37
12.1. SAR TEST RESULTS SUMMARY	37
APPENDIX A. SAR SYSTEM CHECK DATA	46
APPENDIX B. SAR MEASUREMENT DATA.....	50
APPENDIX C. TEST SETUP PHOTOGRAPHS & EUT PHOTOGRAPHS	79
APPENDIX D. CALIBRATION DATA.....	79

1. SUMMARY OF MAXIMUM SAR VALUE

The maximum results of Specific Absorption Rate (SAR) found during testing for EUT are as follows:

Frequency Band	Highest Reported SAR(W/Kg)	
	Head	Body-worn(with 10mm separation)
GSM 850	0.734	1.408
PCS 1900	0.827	1.347
UMTS Band II	1.313	1.266
UMTS Band V	0.564	0.953
Simultaneous Reported SAR	1.421	

This device is compliance with Specific Absorption Rate (SAR) for general population/uncontrolled exposure limits (1.6W/Kg) specified in IEEE Std. 1528:2003; IEEE1528a-2005;FCC 47CFR § 2.1093; IEEE/ANSI C95.1:1992 and the following specific FCC Test Procedures:

- KDB 447498 D01 General RF Exposure Guidance v05r02
- KDB 648474 D04 Handset SAR v01r02
- KDB 865664 D01 SAR measurement 100 MHz to 6 GHz v01r03
- KDB 941225 D01 3G SAR Procedures v03

2. GENERAL INFORMATION

2.1. EUT Description

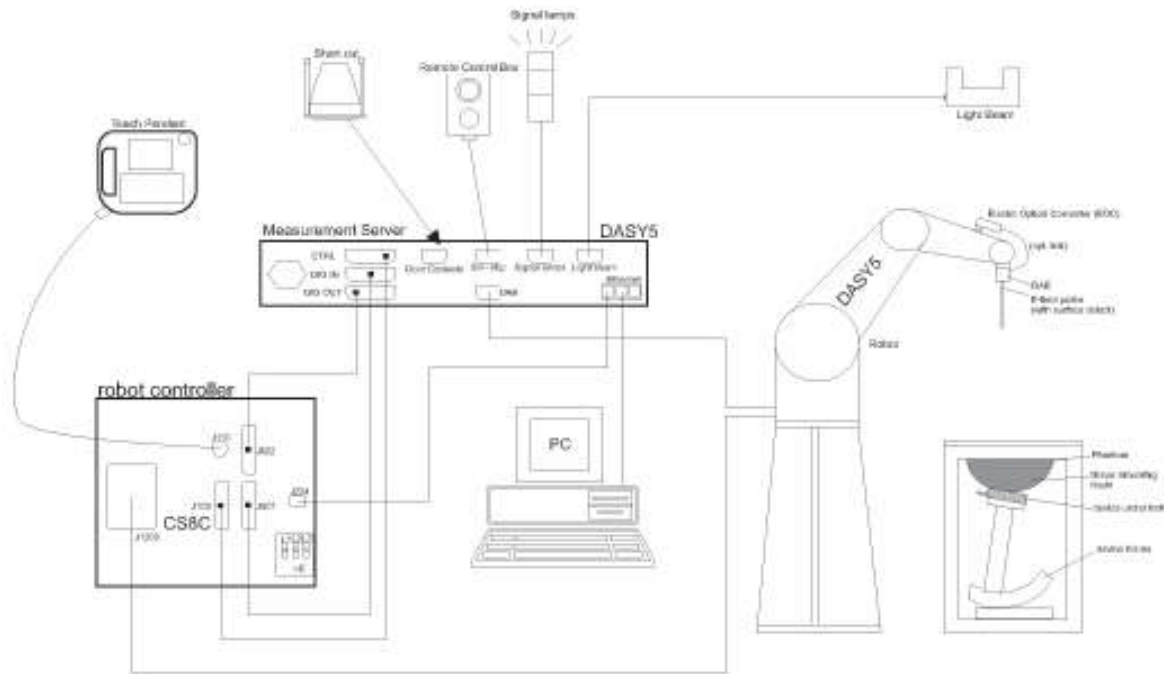
General Information	
Product Designation	3G Feature phone
Test Model	B30
Hardware Version	S721M_MB_V1.0
Software Version	B30_L02_2015_05_05_V0.3
Device Category	Portable
RF Exposure Environment	Uncontrolled
Antenna Type	Internal
GSM and GPRS	
Support Band	<input checked="" type="checkbox"/> GSM 850 <input checked="" type="checkbox"/> PCS 1900 <input checked="" type="checkbox"/> GSM 900 <input checked="" type="checkbox"/> DCS 1800
GPRS Type	Class B
GPRS Class	Class 12(1Tx+4Rx, 2Tx+3Rx, 3Tx+2Rx, 4Tx+1Rx)
TX Frequency Range	GSM 850 : 820-850MHz;; PCS 1900: 1850-1910MHz;
RX Frequency Range	GSM 850 : 869~894MHz; PCS 1900: 1930~1990MHz
Release Version	R99
Type of modulation	GMSK for GSM/GPRS
Antenna Gain	-1.0dBi(GSM 850), -0.8dBi (GSM 1900)
Max. Average Power (Max. Peak Power)	GSM850: 31.25dBm(32.64dBm) ;PCS1900: 28.26dBm(29.64dBm)
WCDMA	
Support Band	<input checked="" type="checkbox"/> UMTS FDD Band II <input checked="" type="checkbox"/> UMTS FDD Band V <input type="checkbox"/> UMTS FDD Band I <input type="checkbox"/> UMTS FDD Band VIII
HS Type	HSPA(HSUPA/HSDPA)
TX Frequency Range	WCDMA FDD Band II: 1850-1910MHz WCDMA FDD Band V: 820-850MHz
RX Frequency Range	WCDMA FDD Band II: 1930-1990MHz WCDMA FDD Band V: 869-894MHz
Release Version	Rel-6
Type of modulation	HSDPA:QPSK/16QAM; HSUPA:BPSK; WCDMA:QPSK
Antenna Gain	-1.0dBi(WCDMA 850), -0.8dBi (WCDMA 1900)
Max. Average Power (Max. Peak Power)	Band II: 21.31dBm (23.61dBm); Band V: 21.37dBm (23.66dBm)

EUT Description(Continue)

Bluetooth	
Bluetooth Version	<input type="checkbox"/> V2.0 <input type="checkbox"/> V2.1 <input checked="" type="checkbox"/> V2.1+EDR <input type="checkbox"/> V3.0 <input type="checkbox"/> V3.0+HS <input type="checkbox"/> V4.0
Operation Frequency	2402~2480MHz
Type of modulation	<input checked="" type="checkbox"/> GFSK <input checked="" type="checkbox"/> π/4-DQPSK <input checked="" type="checkbox"/> 8-DPSK
Avg. Burst Power	-2.76dBm
Antenna Gain	0.8dBi
Accessories	
Battery	Brand name: Neutral Model No. : BL-5C Voltage and Capacitance: 3.7 V & 1000mAh
Adapter 1	Brand name: Eagle star Model No. : ASUC30a-050050 Input: AC 100-240V, 50/60Hz, 0.3A Output: DC 5V, 500mA
Adapter 2	Brand name: Kaipule Model No. : A05005OU01 Input: AC 100-240V, 50/60Hz, 0.2A Output: DC 5V, 500mA
Earphone	Brand name: N/A Model No. : N/A
Note:CMU200 can measure the average power and Peak power at the same time	
Product	Type
	<input checked="" type="checkbox"/> Production unit <input type="checkbox"/> Identical Prototype

3. SAR MEASUREMENT SYSTEM

3.1. The DASY5 system used for performing compliance tests consists of following items




- A standard high precision 6-axis robot with controller, teach pendant and software.
- Data acquisition electronics (DAE) which attached to the robot arm extension. The DAE consist of a highly sensitive electrometer-grade preamplifier with auto-zeroing, a channel and gain-switching multiplexer, a fast 16 bit AD-converter and a command decoder with a control logic unit. Transmission to the measurement server is accomplished through an optical downlink for data and status information, as well as an optical uplink for commands and the clock
- A dosimetric probe equipped with an optical surface detector system.
- The Electro-optical converter (EOC) performs the conversion from optical to electrical signals for the digital Communication to the DAE. To use optical surface detection, a special version of the EOC is required. The EOC signal is transmitted to the measurement server.
- A Light Beam used is for probe alignment. This improves the (absolute) accuracy of the probe positioning.
- A computer running WinXP and the DASY5 software.
- Remote control and teach pendant as well as additional circuitry for robot safety such as warning lamps, etc.
- Phantoms, device holders and other accessories according to the targeted measurement.

3.2. DASY5 E-Field Probe

The SAR measurement is conducted with the dosimetric probe manufactured by SPEAG. The probe is specially designed and calibrated for use in liquid with high permittivity. The dosimetric probe has special calibration in liquid at different frequency. SPEAG conducts the probe calibration in compliance with international and national standards (e.g. IEEE 1528 and relevant KDB files.) The calibration data are in Appendix D.

Isotropic E-Field Probe Specification


Model	EX3DV4	
Manufacture	SPEAG	
frequency	0.3GHz-6 GHz Linearity:±0.2dB(300 MHz-6 GHz)	
Dynamic Range	0.01W/Kg-100W/Kg Linearity:±0.2dB	
Dimensions	Overall length:337mm Tip diameter:2.5mm Typical distance from probe tip to dipole centers:1mm	
Application	High precision dosimetric measurements in any exposure scenario (e.g., very strong gradient fields). Only probe which enables compliance testing for frequencies up to 6 GHz with precision of better 30%.	

3.3. Data Acquisition Electronics description

The data acquisition electronics (DAE) consist if a highly sensitive electrometer-grade preamplifier with auto-zeroing, a channel and gain-switching multiplexer, a fast 16 bit AD-converte and a command decoder with a control logic unit. Transmission to the measurement sever is accomplished through an optical downlink fir data and status information, as well as an optical uplink for commands and the clock.

The mechanical probe mounting device includes two different sensor systems for frontal and sideways probe contacts. They are used for mechanical surface detection and probe collision detection.

DAE4

Input Impedance	200MOhm	
The Inputs	Symmetrical and floating	
Common mode rejection	above 80 dB	

3.4. Robot

The DASY system uses the high precision robots (DASY5:TX60) type from Stäubli SA (France). For the 6-axis controller system, the robot controller version from is used.

The XL robot series have many features that are important for our application:

- ☐ High precision (repeatability 0.02 mm)
- ☐ High reliability (industrial design)
- ☐ Jerk-free straight movements
- ☐ Low ELF interference (the closed metallic construction shields against motor control fields)
- ☐ 6-axis controller



3.5. Light Beam Unit

The light beam switch allows automatic “tooling” of the probe. During the process, the actual position of the probe tip with respect to the robot arm is measured, as well as the probe length and the horizontal probe offset. The software then corrects all movements, such that the robot coordinates are valid for the probe tip.

The repeatability of this process is better than 0.1 mm. If a position has been taught with an aligned prob.1 mm, even if the other probe has different dimensions. During probe rotations, the probe tip will keep its actual position. e, the same position will be reached with another aligned probe within 0



3.6. Device Holder

The DASY device holder is designed to cope with different positions given in the standard. It has two scales for the device rotation (with respect to the body axis) and the device inclination (with respect to the line between the ear reference points). The rotation center for both scales is the ear reference point (EPR).

Thus the device needs no repositioning when changing the angles.

The DASY device holder has been made out of low-loss POM material having the following dielectric parameters: relative permittivity $\epsilon=3$ and loss tangent $\delta = 0.02$. The amount of dielectric material has been reduced in the closest vicinity of the device, since measurements have suggested that the influence of the clamp on the test results could thus be lowered.



3.7. Measurement Server

The measurement server is based on a PC/104 CPU board with CPU (DASY5: 400 MHz, Intel Celeron), chip-disk (DASY5: 128MB), RAM (DASY5: 128MB). The necessary circuits for communication with the DAE electronic box, as well as the 16 bit AD converter system for optical detection and digital I/O interface are contained on the DAYS I/O board, which is directly connected to the PC/104 bus of the CPU board.

The measurement server performs all the real-time data evaluation for field measurements and surface detection, controls robot movements and handles safety operations.



3.8. PHANTOM

SAM Twin Phantom

The SAM twin phantom is a fiberglass shell phantom with 2mm shell thickness (except the ear region where shell thickness increases to 6mm). It has three measurement areas:

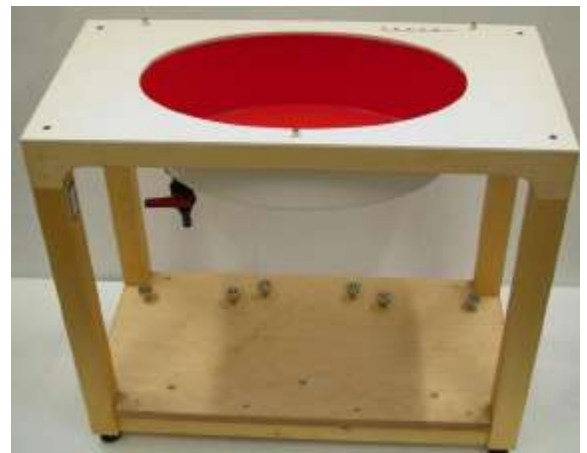
- ☐ Left head
- ☐ Right head
- ☐ Flat phantom



The bottom plate contains three pair of bolts for locking the device holder. The device holder positions are adjusted to the standard measurement positions in the three sections. A white cover is provided to tap the phantom during off-periods to prevent water evaporation and changes in the liquid parameters. On the phantom top, three reference markers are provided to identify the phantom position with respect to the robot.

ELI4 Phantom

- ☐ Flat phantom a fiberglass shell flat phantom with 2mm+/- 0.2 mm shell thickness. It has only one measurement area for Flat phantom



4. SAR MEASUREMENT PROCEDURE

4.1. Specific Absorption Rate (SAR)

SAR is related to the rate at which energy is absorbed per unit mass in object exposed to a radio field. The SAR distribution in a biological body is complicated and is usually carried out by experimental techniques or numerical modeling. The standard recommends limits for two tiers of groups, occupational/controlled and occupational/uncontrolled, based on a person's awareness and ability to exercise control over his or her exposure. In general, occupational/controlled exposure limits are higher than the limits for general population/uncontrolled.

The SAR definition is the time derivative (rate) of the incremental energy (dW) absorbed by (dissipated in) an incremental mass (dm) contained in a volume element (dv) of given mass density (ρ). The equation description is as below:

$$SAR = \frac{d}{dt} \left(\frac{dW}{dm} \right) = \frac{d}{dt} \left(\frac{dW}{\rho dV} \right)$$

SAR is expressed in units of Watts per kilogram (W/Kg)

SAR can be obtained using either of the following equations:

$$SAR = \frac{\sigma E^2}{\rho}$$

$$SAR = c_h \left. \frac{dT}{dt} \right|_{t=0}$$

Where

SAR	is the specific absorption rate in watts per kilogram;
E	is the r.m.s. value of the electric field strength in the tissue in volts per meter;
σ	is the conductivity of the tissue in siemens per metre;
ρ	is the density of the tissue in kilograms per cubic metre;
c_h	is the heat capacity of the tissue in joules per kilogram and Kelvin;

$\left. \frac{dT}{dt} \right|_{t=0}$ is the initial time derivative of temperature in the tissue in kelvins per second

4.2. SAR Measurement Procedure

Step 1: Power Reference Measurement

The Power Reference Measurement and Power Drift Measurement are for monitoring the power drift of the device under test in the batch process. The minimum distance of probe sensors to surface is 2.7mm This distance cannot be smaller than the distance os sensor calibration points to probe tip as `defined in the probe properties,

Step 2: Area Scan

The Area Scan is used as a fast scan in two dimensions to find the area of high field values, before doing a fine measurement around the hot spot. The sophisticated interpolation routines implemented in DASY software can find the maximum locations even in relatively coarse grids. When an Area Scan has measured all reachable points, it computes the field maximal found in the scanned area, within a range of the global maximum. The range (in db) is specified in the standards for compliance testing. For example, a 2db range is required in IEEE Standard 1528 and IEC62209 standards, whereby 3db is a requirement when compliance is assessed in accordance with the ARIB standard (Japan) If one Zoom Scan follows the Area Scan, then only the absolute maximum will be taken as reference. For cases where multiple maximum are detected, the number of Zoom Scan has to be increased accordingly.

Area Scan Parameters extracted from KDB 865664 D01 SAR Measurement 100MHz to 6GHz

	$\leq 3 \text{ GHz}$	$> 3 \text{ GHz}$
Maximum distance from closest measurement point (geometric center of probe sensors) to phantom surface	$5 \pm 1 \text{ mm}$	$\frac{1}{2} \cdot \delta \cdot \ln(2) \pm 0.5 \text{ mm}$
Maximum probe angle from probe axis to phantom surface normal at the measurement location	$30^\circ \pm 1^\circ$	$20^\circ \pm 1^\circ$
Maximum area scan spatial resolution: $\Delta x_{\text{Area}}, \Delta y_{\text{Area}}$	$\leq 2 \text{ GHz: } \leq 15 \text{ mm}$ $2 - 3 \text{ GHz: } \leq 12 \text{ mm}$	$3 - 4 \text{ GHz: } \leq 12 \text{ mm}$ $4 - 6 \text{ GHz: } \leq 10 \text{ mm}$
	When the x or y dimension of the test device, in the measurement plane orientation, is smaller than the above, the measurement resolution must be \leq the corresponding x or y dimension of the test device with at least one measurement point on the test device.	

Step 3: Zoom Scan

Zoom Scan are used to assess the peak spatial SAR value within a cubic average volume containing 1g abd 10g of simulated tissue. The Zoom Scan measures points(refer to table below) within a cube whose base faces are centered on the maxima found in a preceding area scan job within the same procedure. When the measurement is done, the Zoom Scan evaluates the averaged SAR for 1g and 10g and displays these values next to the job's label.

Zoom Scan Parameters extracted from KDB865664 d01 SAR Measurement 100MHz to 6GHz

Maximum zoom scan spatial resolution: $\Delta x_{\text{Zoom}}, \Delta y_{\text{Zoom}}$			$\leq 2 \text{ GHz}: \leq 8 \text{ mm}$ $2 - 3 \text{ GHz}: \leq 5 \text{ mm}^*$	$3 - 4 \text{ GHz}: \leq 5 \text{ mm}^*$ $4 - 6 \text{ GHz}: \leq 4 \text{ mm}^*$
Maximum zoom scan spatial resolution, normal to phantom surface	uniform grid: $\Delta z_{\text{Zoom}}(n)$		$\leq 5 \text{ mm}$	$3 - 4 \text{ GHz}: \leq 4 \text{ mm}$ $4 - 5 \text{ GHz}: \leq 3 \text{ mm}$ $5 - 6 \text{ GHz}: \leq 2 \text{ mm}$
	graded grid	$\Delta z_{\text{Zoom}}(1)$: between 1 st two points closest to phantom surface	$\leq 4 \text{ mm}$	$3 - 4 \text{ GHz}: \leq 3 \text{ mm}$ $4 - 5 \text{ GHz}: \leq 2.5 \text{ mm}$ $5 - 6 \text{ GHz}: \leq 2 \text{ mm}$
		$\Delta z_{\text{Zoom}}(n>1)$: between subsequent points	$\leq 1.5 \cdot \Delta z_{\text{Zoom}}(n-1)$	
Minimum zoom scan volume	x, y, z		$\geq 30 \text{ mm}$	$3 - 4 \text{ GHz}: \geq 28 \text{ mm}$ $4 - 5 \text{ GHz}: \geq 25 \text{ mm}$ $5 - 6 \text{ GHz}: \geq 22 \text{ mm}$
Note: δ is the penetration depth of a plane-wave at normal incidence to the tissue medium; see draft standard IEEE P1528-2011 for details.				
* When zoom scan is required and the <u>reported</u> SAR from the <i>area scan based 1-g SAR estimation</i> procedures of KDB 447498 is $\leq 1.4 \text{ W/kg}$, $\leq 8 \text{ mm}$, $\leq 7 \text{ mm}$ and $\leq 5 \text{ mm}$ zoom scan resolution may be applied, respectively, for 2 GHz to 3 GHz, 3 GHz to 4 GHz and 4 GHz to 6 GHz.				

Step 4: Power Drift Measurement

The Power Drift Measurement measures the field at the same location as the most recent power reference measurement within the same procedure, and with the same settings. The Power Drift Measurement gives the field difference in dB from the reading conducted within the same settings. This allows a user to monitor the power drift of the device under test within a batch process. The measurement procedure is the same as Step 1.

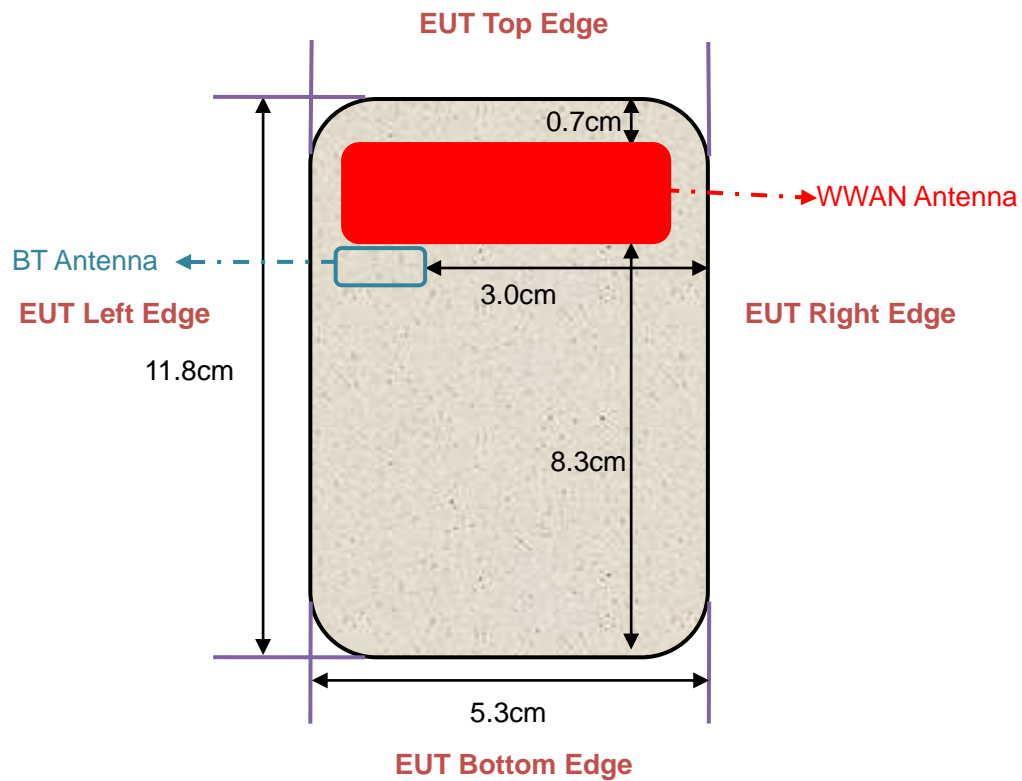
4.3. RF Exposure Conditions

Test Configuration and setting:

The EUT is a model of GSM Portable Mobile Station (MS). It supports GSM/GPRS, WCDMA/HSPA, BT.

For WWAN SAR testing, the device was controlled by using a base station emulator. Communication between the device and the emulator were established by air link. The distance between the EUT and the antenna is larger than 50cm, and the output power radiated from the emulator antenna is at least 30db smaller than the output power of EUT.

Antenna Location: (the front view)



For WWAN mode:

Test Configurations	Antenna to edges/surface	SAR required	Note
Head			
Left Touch		Yes	
Left Tilt		Yes	
Right Touch		Yes	
Right Tilt		Yes	
Body			
Back	<25mm	Yes	
Front	<25mm	Yes	
Edge 1 (Top)	7 mm	Yes	
Edge 2 (Right)	7 mm	Yes	
Edge 3 (Bottom)	83 mm	Yes	
Edge 4 (Left)	7 mm	Yes	

5. TISSUE SIMULATING LIQUID

For SAR measurement of the field distribution inside the phantom, the phantom must be filled with homogeneous tissue simulating liquid to a depth of at least 15cm. For head SAR testing the liquid height from the ear reference point (ERP) of the phantom to the liquid top surface is larger than 15cm For body SAR testing, the liquid height from the center of the flat phantom to the liquid top surface is larger than 15cm. The nominal dielectric values of the tissue simulating liquids in the phantom and the tolerance of 5% are listed in 4.2

5.1. The composition of the tissue simulating liquid

Ingredient	Water	Salt	Sugar	HEC	Preventol	DGBE	TWEEN
835MHz Head	✓	✓	✓	✓	✓	--	--
835MHz Body	✓	✓	✓	✓	✓	--	--
1900MHz Head	✓	✓	--	--	--	✓	--
1900MHz Body	✓	✓	✓	✓	✓	--	--

5.2. Tissue Dielectric Parameters for Head and Body Phantoms

The head tissue dielectric parameters recommended by the IEEE 1528 have been incorporated in the following table. These head parameters are derived from planar layer models simulating the highest expected SAR for the dielectric properties and tissue thickness variations in a human head. Other head and body tissue parameters that have not been specified in IEEE 1528 are derived from the tissue dielectric parameters computed from the 4-Cole-Cole equations described in Reference [12] and extrapolated according to the head parameters specified in IEEE 1528.

Target Frequency (MHz)	head		body	
	ϵ_r	σ (S/m)	ϵ_r	σ (S/m)
300	45.3	0.87	58.2	0.92
450	43.5	0.87	56.7	0.94
835	41.5	0.90	55.2	0.97
900	41.5	0.97	55.0	1.05
915	41.5	1.01	55.0	1.06
1450	40.5	1.20	54.0	1.30
1610	40.3	1.29	53.8	1.40
1800 – 2000	40.0	1.40	53.3	1.52
2450	39.2	1.80	52.7	1.95
3000	38.5	2.40	52.0	2.73
5800	35.3	5.27	48.2	6.00

(ϵ_r = relative permittivity, σ = conductivity and $\rho = 1000 \text{ kg/m}^3$)

5.3. Tissue Calibration Result

The dielectric parameters of the liquids were verified prior to the SAR evaluation using DASY5 Dielectric Probe Kit and R&S Network Analyzer ZVL6.

Tissue Stimulant Measurement for 835MHz					
	Fr. (MHz)	Dielectric Parameters ($\pm 5\%$)		Tissue Temp [$^{\circ}\text{C}$]	Test time
		ϵ_r 41.5 (39.425-43.575)	δ [s/m] 0.90(0.855-0.945)		
Head	824.2	42.73	0.86	21.5	June 3, 2015
	826.4	42.15	0.87		
	835	42.01	0.89		
	836.6	41.85	0.91		
	846.6	41.43	0.91		
	848.8	41.00	0.93		
	Fr. (MHz)	Dielectric Parameters ($\pm 5\%$)		Tissue Temp [$^{\circ}\text{C}$]	Test time
		ϵ_r 55.20(52.44-57.96)	δ [s/m]0.97(0.9215-1.0185)		
Body	824.2	56.25	0.94	22.0	June 4, 2015
	826.4	55.88	0.95		
	835	55.31	0.96		
	836.6	55.07	0.96		
	846.6	54.72	0.98		
	848.8	54.53	0.99		

Tissue Stimulant Measurement for 1900MHz					
	Fr. (MHz)	Dielectric Parameters ($\pm 5\%$)		Tissue Temp [$^{\circ}\text{C}$]	Test time
		ϵ_r 40.00(38.00-42.00)	δ [s/m]1.40(1.33-1.47)		
Head	1850.2	41.47	1.35	22.4	June 8, 2015
	1852.4	41.00	1.36		
	1880	40.92	1.40		
	1900	40.64	1.43		
	1907.6	40.28	1.44		
	1909.8	39.90	1.46		
	Fr. (MHz)	Dielectric Parameters ($\pm 5\%$)		Tissue Temp [$^{\circ}\text{C}$]	Test time
		ϵ_r 53.30(50.635-55.965)	δ [s/m]1.52(1.444-1.596)		
Body	1850.2	53.99	1.46	21.7	June 9, 2015
	1852.4	53.62	1.47		
	1880	53.17	1.49		
	1900	52.88	1.51		
	1907.6	52.62	1.53		
	1909.8	51.79	1.55		

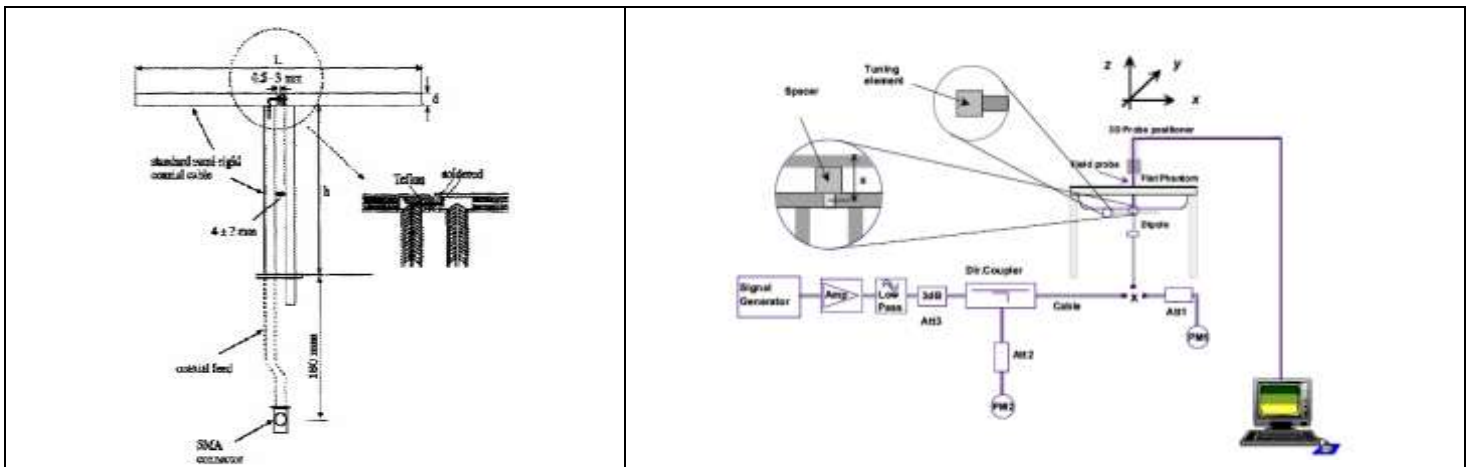
6. SAR SYSTEM CHECK PROCEDURE

6.1. SAR System Check Procedures

SAR system check is required to confirm measurement accuracy, according to the tissue dielectric media, probe calibration points and other system operating parameters required for measuring the SAR of a test device. The system verification must be performed for each frequency band and within the valid range of each probe calibration point required for testing the device. The same SAR probe(s) and tissue-equivalent media combinations used with each specific SAR system for system verification must be used for device testing. When multiple probe calibration points are required to cover substantially large transmission bands, independent system verifications are required for each probe calibration point. A system verification must be performed before each series of SAR measurements using the same probe calibration point and tissue-equivalent medium. Additional system verification should be considered according to the conditions of the tissue-equivalent medium and measured tissue dielectric parameters, typically every three to four days when the liquid parameters are remeasured or sooner when marginal liquid parameters are used at the beginning of a series of measurements.

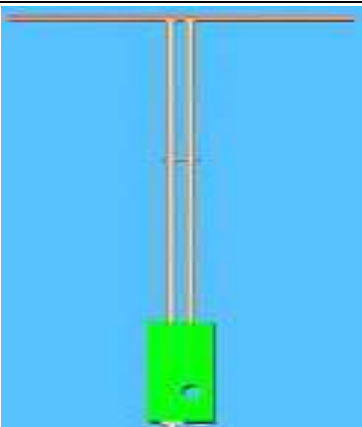
Each DASY system is equipped with one or more system check kits. These units, together with the predefined measurement procedures within the DASY software, enable the user to conduct the system check and system validation. System kit includes a dipole, and dipole device holder.

The system check verifies that the system operates within its specifications. It's performed daily or before every SAR measurement. The system check uses normal SAR measurement in the flat section of the phantom with a matched dipole at a specified distance. The system check setup is shown as below.



6.2. SAR System Check

6.2.1. Dipoles

	<p>The dipoles used is based on the IEEE-1528 standard, and is complied with mechanical and electrical specifications in line with the requirements of both IEEE and FCC Supplement C. the table below provides details for the mechanical and electrical Specifications for the dipoles.</p>
---	---

Frequency	L (mm)	h (mm)	d (mm)
835MHz	161.0	89.8	3.6
1900MHz	68	39.5	3.6

6.2.2. System Check Result

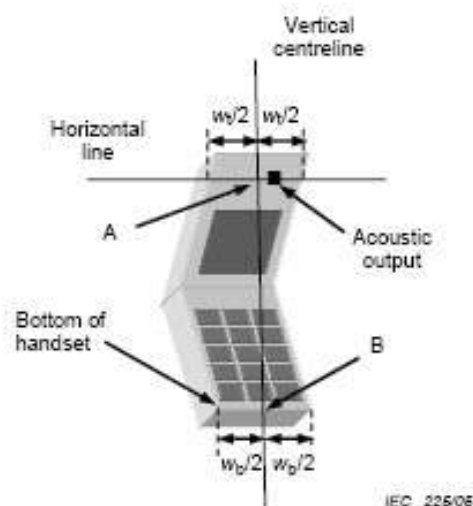
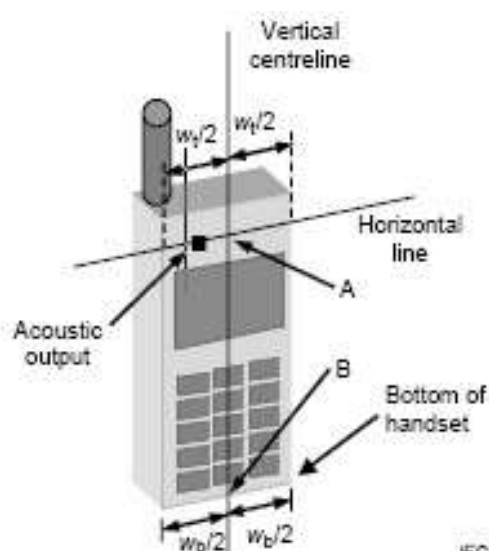
System Performance Check at 835MHz&1900MHz for Head								
Validation Kit: SN 46/11DIP 0G835-190 & SN 46/11DIP 1G900-187								
Frequency [MHz]	Target Value(W/Kg)		Reference Result ($\pm 10\%$)		Tested Value(W/Kg)		Tissue Temp. [°C]	Test time
	1g	10g	1g	10g	1g	10g		
835	9.60	6.20	8.64-10.56	5.58-6.82	10.368	6.688	21.5	June 3, 2015
1900	39.65	20.24	35.685-43.615	18.216-22.264	40.800	19.680	22.4	June 8, 2015
System Performance Check at 835 MHz &1900MHz for Body								
Frequency [MHz]	Target Value(W/Kg)		Reference Result ($\pm 10\%$)		Tested Value(W/Kg)		Tissue Temp. [°C]	Test time
	1g	10g	1g	10g	1g	10g		
835	9.90	6.39	8.91-10.89	5.75-7.03	10.560	6.832	22.0	June 4, 2015
1900	40.74	21.43	36.666-44.814	19.287-23.573	40.960	20.480	21.7	June 9, 2015

7. EUT TEST POSITION

This EUT was tested in **Right Cheek, Right Titled, Left Cheek, Left Titled, Body back and Body front and 4 edges.**

7.1. Define Two Imaginary Lines on the Handset

- (1) The vertical centerline passes through two points on the front side of the handset the midpoint of the width w_t of the handset at the level of the acoustic output, and the midpoint of the width w_b of the handset.
- (2) The horizontal line is perpendicular to the vertical centerline and passes through the center of the acoustic output. The horizontal line is also tangential to the face of the handset at point A.
- (3) The two lines intersect at point A. Note that for many handsets, point A coincides with the center of the acoustic output; however, the acoustic output may be located elsewhere on the horizontal line. Also note that the vertical centerline is not necessarily to the front face of the handset, especially for clamshell handsets, handsets with flip covers, and other irregularly shaped handsets.



7.2. Cheek Position

- (1) To position the device with the vertical center line of the body of the device and the horizontal line crossing the center piece in a plane parallel to the sagittal plane of the phantom. While maintaining the device in this plane, align the vertical center line with the reference plane containing the ear and mouth reference point (M: Mouth, RE: Right Ear, and LE: Left Ear) and align the center of the ear piece with the line RE-LE.
- (2) To move the device towards the phantom with the ear piece aligned with the the line LE-RE until the phone touched the ear. While maintaining the device in the reference plane and maintaining the phone contact with ear, move the bottom of the phone until any point on the front side is in contact with the cheek of the phantom or until contact with the ear is lost



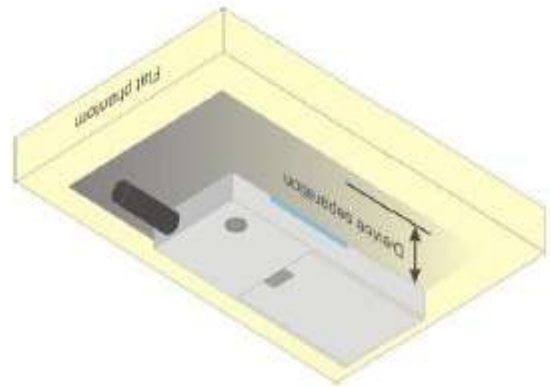
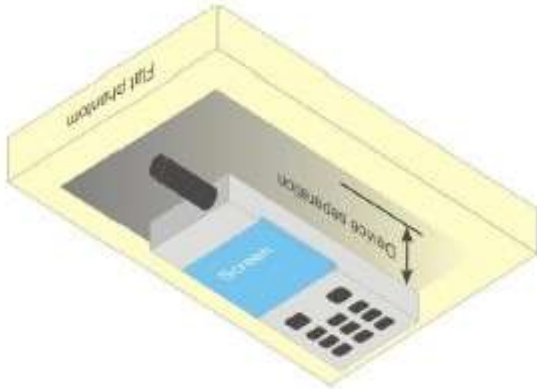
7.3. Title Position

- (1) To position the device in the “cheek” position described above.
- (2) While maintaining the device in the reference plane described above and pivoting against the ear, moves it outward away from the mouth by an angle of 15 degrees or until with the ear is lost.



7.4. Body Worn Position

- (1) To position the EUT parallel to the phantom surface.
- (2) To adjust the EUT parallel to the flat phantom.
- (3) To adjust the distance between the EUT surface and the flat phantom to **10mm**.



8. SAR EXPOSURE LIMITS

SAR assessments have been made in line with the requirements of IEEE-1528, FCC Supplement C, and comply with ANSI/IEEE C95.1-1992 “Uncontrolled Environments” limits. These limits apply to a location which is deemed as “Uncontrolled Environment” which can be described as a situation where the general public may be exposed to an RF source with no prior knowledge or control over their exposure.

Limits for General Population/Uncontrolled Exposure (W/kg)

Type Exposure	Uncontrolled Environment Limit (W/kg)
Spatial Peak SAR (1g cube tissue for brain or body)	1.60
Spatial Average SAR (Whole body)	0.08
Spatial Peak SAR (Limbs)	4.0

9. TEST EQUIPMENT LIST

Equipment description	Manufacturer/ Model	Identification No.	Current calibration date	Next calibration date
Stäubli Robot	Stäubli-TX60	F13/5Q2UD1/A/01	N/A	N/A
Robot Controller	Stäubli-CS8	139522	N/A	N/A
TISSUE Probe	SATIMO	SN 45/11 OCPG45	12/03/2014	12/02/2015
E-Field Probe	Speag-EX3DV4	3953	11/06/2014	11/05/2015
SAM Twin Phantom	Speag-SAM	1790	N/A	N/A
Device Holder	Speag-SD 000 H01 KA	SD 000 H01 KA	N/A	N/A
DAE4	Speag-SD 000 D04 BM	1398	03/11/2015	03/10/2016
SAR Software	Speag-DASY5	DASY52.8	N/A	N/A
Liquid	SATIMO	-	N/A	N/A
Radio Communication Tester	R&S-CMU200	069Y7-158-13-712	03/06/2015	03/05/2016
Dipole	SATIMO SID835	SN46/11 DIP 0G835-190	10/02/2014	10/01/2017
Dipole	SATIMO SID1900	SN46/11 DIP 1G900-187	11/14/2013	11/13/2016
Signal Generator	Agilent-E4438C	MY44260051	03/06/2015	03/05/2016
Power Sensor	NRP-Z23	US38261498	03/06/2015	03/05/2016
Spectrum Analyzer E4440	Agilent	US41421290	07/25/2014	07/24/2015
Network Analyzer	Rhode & Schwarz ZVL6	SN100132	03/06/2015	03/05/2016
Attenuator	Warison /WATT-6SR1211	N/A	N/A	N/A
Attenuator	Mini-circuits / VAT-10+	N/A	N/A	N/A
Amplifier	EM30180	SN060552	03/06/2015	03/05/2016
Directional Couple	Werlatone/ C5571-10	SN99463	07/30/2014	07/29/2015
Directional Couple	Werlatone/ C6026-10	SN99482	07/30/2014	07/29/2015
Power Sensor	NRP-Z21	1137.6000.02	10/22/2014	10/21/2015
Power Viewer	R&S	V2.3.1.0	N/A	N/A

Note: Per KDB 865664Dipole SAR Validation, AGC Lab has adopted 3 years calibration intervals. On annual basis, every measurement dipole has been evaluated and is in compliance with the following criteria:

1. There is no physical damage on the dipole;
2. System validation with specific dipole is within 10% of calibrated value;
3. Return-loss is within 20% of calibrated measurement;
4. Impedance is within 5Ω of calibrated measurement.

10. MEASUREMENT UNCERTAINTY

The component of uncertainty may generally be categorized according to the methods used to evaluate them. The evaluation of uncertainty by the statistical analysis of a series of observations is termed a Type A evaluation of uncertainty. The evaluation of uncertainty by means other than the statistical analysis of a series of observation is termed a Type B evaluation of uncertainty. Each component of uncertainty, however evaluated, is represented by an estimated standard deviation, termed standard uncertainty, which is determined by the positive square root of the estimated variance.

A Type A evaluation of standard uncertainty may be based on any valid statistical method for treating data. This includes calculating the standard deviation of the mean of a series of independent observations; using the method of least squares to fit a curve to the data in order to estimate the parameter of the curve and their standard deviations; or carrying out an analysis of variance in order to identify and quantify random effects in certain kinds of measurement.

A type B evaluation of standard uncertainty is typically based on scientific judgment using all of the relevant information available. These may include previous measurement data, experience, and knowledge of the behavior and properties of relevant materials and instruments, manufacture's specification, data provided in calibration reports and uncertainties assigned to reference data taken from handbooks. Broadly speaking, the uncertainty is either obtained from an outdoor source or obtained from an assumed distribution, such as the normal distribution, rectangular or triangular distributions indicated in Table as follow.

Uncertainty Distributions	Normal	Rectangular	Triangular	U-Shape
Multi-plying Factor(a)	$1/k(b)$	$1/\sqrt{3}$	$1/\sqrt{6}$	$1/\sqrt{2}$

(a) Standard uncertainty is determined as the product of the multiplying factor and the estimated range of variations in the measured quantity

(b) k is the coverage factor

Table 13.1 Standard Uncertainty for Assumed Distribution (above table)

The combined standard uncertainty of the measurement result represents the estimated standard deviation of the result. It is obtained by combining the individual standard uncertainties of both Type A and Type B evaluation using the usual "root-sum-squares" (RSS) methods of combining standard deviations by taking the positive square root of the estimated variances.

Expanded uncertainty is a measure of uncertainty that defines an interval about the measurement result within which the measured value is confidently believed to lie. It is obtained by multiplying the combined standard uncertainty by a coverage factor. Typically, the coverage factor ranges from 2 to 3. Using a coverage factor allows the true value of a measured quantity to be specified with a defined probability within the specified uncertainty range. For purpose of this document, a coverage factor two is used, which corresponds to confidence interval of about 95 %. The DASY uncertainty Budget is shown in the following tables.

DAYS5 Measurement Uncertainty Measurement uncertainty for 30 MHz to 3GHz averaged over 1 gram / 10 gram.							
Error Description	Uncertainty value($\pm 10\%$)	Probability Distribution	Divisor	(Ci) 1g	(Ci) 10g	Standard Uncertainty (1g)	Standard Uncertainty (10g)
Measurement System							
Probe Calibration	6.53	Normal	1	1	1	6.53	6.53
Axial Isotropy	4.6	Rectangular	$\sqrt{3}$	1	1	2.66	2.66
Hemispherical Isotropy	9.3	Rectangular	$\sqrt{3}$	1	1	5.37	5.37
Linearity	4.5	Rectangular	$\sqrt{3}$	1	1	2.60	2.60
Probe Modulation Response	0.2	Rectangular	$\sqrt{3}$	1	1	0.12	0.12
System Detection Limits	0.9	Rectangular	$\sqrt{3}$	1	1	0.52	0.52
Boundary Effects	0.9	Rectangular	$\sqrt{3}$	0	0	0	0
Readout Electronics	0.2	Normal	$\sqrt{3}$	1	1	0.12	0.12
Response Time	0	Rectangular	$\sqrt{3}$	1	1	0	0
Integration Time	0	Rectangular	$\sqrt{3}$	1	1	0	0
RF Ambient Noise	0.9	Rectangular	$\sqrt{3}$	1	1	0.52	0.52
RF Ambient Reflection	0.9	Rectangular	$\sqrt{3}$	1	1	0.52	0.52
Probe Positioner	0.7	Rectangular	$\sqrt{3}$	1	1	0.40	0.40
Probe Positioning	6.5	Rectangular	$\sqrt{3}$	1	1	3.75	3.75
Post-processing	3.8	Rectangular	$\sqrt{3}$	1	1	2.19	2.19
Test Sample Related							
Device Positioning	3.6	Normal	1	1	1	3.6	3.6
Device Holder	2.9	Normal	1	1	1	2.9	2.9
Measurement SAR Drift	5.0	Rectangular	$\sqrt{3}$	1	1	2.89	2.89
Power Scaling	0.0	Rectangular	$\sqrt{3}$	1	1	0	0
Phantom and Setup							
Phantom Uncertainty	3.9	Rectangular	$\sqrt{3}$	1	1	2.25	2.25
Liquid Conductivity(Meas.)	2.4	Normal	1	0.78	0.71	1.87	1.70
Liquid Conductivity(Target)	4.9	Rectangular	$\sqrt{3}$	0.64	0.43	1.81	1.22
Liquid Permittivity(Meas.)	2.4	Normal	1	0.26	0.26	0.62	0.62
Liquid Permittivity((Target)	4.9	Rectangular	$\sqrt{3}$	0.6	0.49	1.70	1.39
Liquid Conductivity-temperature uncertainty	1.6	Rectangular	$\sqrt{3}$	0.78	0.71	0.72	0.66
Liquid Permittivity-temperature uncertainty	0.2	Rectangular	$\sqrt{3}$	0.23	0.26	0.026	0.03
Combined Standard Uncertainty						12.03	12.00
Coverage Factor for 95%						K=2	
Expanded Uncertainty						$\pm 24.06\%$	$\pm 24.00\%$

DAYS5 System Check Uncertainty for 30 MHz to 6GHz averaged range								
Error Description	Uncer. value (±10%)	Prob. Dist.	Div.	(Ci) 1g	(Ci) 10g	Std. Unc. (1g)	Std. Unc. (10g)	(v _i) V _{eff}
Measurement System								
Probe Calibration	6.53	Normal	1	1	1	6.53	6.53	∞
Axial Isotropy	4.6	Rectangular	$\sqrt{3}$	1	1	2.66	2.66	∞
Hemispherical Isotropy	9.3	Rectangular	$\sqrt{3}$	1	1	5.37	5.37	∞
Boundary Effects	0.9	Rectangular	$\sqrt{3}$	0	0	0	0	∞
Linearity	4.5	Rectangular	$\sqrt{3}$	1	1	2.60	2.60	∞
System Detection Limits	0.9	Rectangular	$\sqrt{3}$	1	1	0.52	0.52	∞
Modulation Response	0	Rectangular	$\sqrt{3}$	1	1	0	0	∞
Readout Electronics	0.2	Normal	1	1	1	0.2	0.2	∞
Response Time	0	Rectangular	$\sqrt{3}$	1	1	0	0	∞
Integration Time	0	Rectangular	$\sqrt{3}$	1	1	0	0	∞
RF Ambient Noise	0.9	Rectangular	$\sqrt{3}$	1	1	0.52	0.52	∞
RF Ambient Reflection	0.9	Rectangular	$\sqrt{3}$	1	1	0.52	0.52	∞
Probe Positioner	0.7	Rectangular	$\sqrt{3}$	1	1	0.402	0.402	∞
Probe Positioning	6.5	Rectangular	$\sqrt{3}$	1	1	3.752	3.752	∞
Max. SAR Eval.	1.9	Rectangular	$\sqrt{3}$	1	1	1.10	1.10	∞
Dipole Related								
Deviation of exp. dipole	5.3	Rectangular	$\sqrt{3}$	1	1	3.06	3.06	∞
Dipole Axis to Liquid Dist.	2.0	Rectangular	$\sqrt{3}$	1	1	1.15	1.15	∞
Input power & SAR drift	3.3	Rectangular	$\sqrt{3}$	1	1	1.91	1.91	∞
Phantom and Setup								
Phantom Uncertainty	3.9	Rectangular	$\sqrt{3}$	1	1	2.25	2.25	∞
SAR correction	1.8	Rectangular	$\sqrt{3}$	1	0.84	1.04	0.87	∞
Liquid Conductivity(Meas.)	2.4	Normal	1	0.78	0.71	1.87	1.70	∞
Liquid Permittivity(Meas.)	2.4	Normal	1	0.26	0.26	0.62	0.62	∞
Temp. unc. - Conductivity	1.6	Rectangular	$\sqrt{3}$	0.78	0.71	0.72	0.66	∞
Temp. unc. - Permittivity	0.2	Rectangular	$\sqrt{3}$	0.23	0.26	0.02	0.03	∞
Combined Std. Uncertainty						11.16	11.10	
Expanded STD Uncertainty						±22.32%	±22.20%	

11. CONDUCTED POWER MEASUREMENT

GSM BAND

Mode	Frequency(MHz)	Avg. Burst Power(dBm)	Duty cycle Factor(dBm)	Frame Power(dBm)
Maximum Power <1>				
GSM 850	824.2	31.25	-9	22.25
	836.6	31.21	-9	22.21
	848.8	31.14	-9	22.14
GPRS 850 (1 Slot)	824.2	30.78	-9	21.78
	836.6	30.75	-9	21.75
	848.8	30.71	-9	21.71
GPRS 850 (2 Slot)	824.2	28.34	-6	22.34
	836.6	28.28	-6	22.28
	848.8	28.24	-6	22.24
GPRS 850 (3 Slot)	824.2	26.36	-4.26	22.1
	836.6	26.33	-4.26	22.07
	848.8	26.29	-4.26	22.03
GPRS 850 (4 Slot)	824.2	25.31	-3	22.31
	836.6	25.27	-3	22.27
	848.8	25.25	-3	22.25
PCS1900	1850.2	28.26	-9	19.26
	1880	28.25	-9	19.25
	1909.8	28.23	-9	19.23
GPRS1900 (1 Slot)	1850.2	27.77	-9	18.77
	1880	27.75	-9	18.75
	1909.8	27.73	-9	18.73
GPRS1900 (2 Slot)	1850.2	25.35	-6	19.35
	1880	25.32	-6	19.32
	1909.8	25.29	-6	19.29
GPRS1900 (3 Slot)	1850.2	23.41	-4.26	19.15
	1880	23.35	-4.26	19.09
	1909.8	23.32	-4.26	19.06
GPRS1900 (4 Slot)	1850.2	22.34	-3	19.34
	1880	22.28	-3	19.28
	1909.8	22.26	-3	19.26
Maximum Power <2>				
GSM850	824.2	30.79	-9	21.79
PCS1900	1850.2	27.56	-9	18.56

Note 1:

The Frame Power (Source-based time-averaged Power) is scaled the maximum burst average power based on time slots. The calculated methods are show as following:

Frame Power = Max burst power (1 Up Slot) – 9 dB

Frame Power = Max burst power (2 Up Slot) – 6 dB

Frame Power = Max burst power (3 Up Slot) – 4.26 dB

Frame Power = Max burst power (4 Up Slot) – 3 dB

UMTS BAND

HSDPA Setup Configuration:

- The EUT was connected to Base Station Agilent E5515C referred to the Setup Configuration.
- The RF path losses were compensated into the measurements.
- A call was established between EUT and Based Station with following setting:
 - (1) Set Gain Factors(β_c and β_d) parameters set according to each
 - (2) Set RMC 12.2Kbps+HSDPA mode.
 - (3) Set Cell Power=-86dBm
 - (4) Set HS-DSCH Configuration Type to FRC (H-set 1, QPSK)
 - (5) Select HSDPA Uplink Parameters
 - (6) Set Delta ACK, Delta NACK and Delta CQI=8
 - (7) Set Ack - Nack Repetition Factor to 3
 - (8) Set CQI Feedback Cycle (k) to 4ms
 - (9) Set CQI Repetition Factor to 2
 - (10) Power Ctrl Mode=All Up bits
- The transmitted maximum output power was recorded.

Table C.10.2.4: β values for transmitter characteristics tests with HS-DPCCH

Sub-test	β_c (Note5)	β_d	β_d (SF)	β_c/β_d	β_{HS} (Note1, Note 2)	CM (dB) (Note 3)	MPR (dB) (Note 3)
1	2/15	15/15	64	2/15	4/15	0.0	0.0
2	12/15(Note 4)	15/15(Note 4)	64	12/15(Note 4)	24/15	1.0	0.0
3	15/15	8/15	64	15/8	30/15	1.5	0.5
4	15/15	4/15	64	15/4	30/15	1.5	0.5

Note 1: ΔACK , $\Delta NACK$ and $\Delta CQI = 30/15$ with $\beta_{hs} = 30/15 * \beta_c$.

Note 2: For the HS-DPCCH power mask requirement test in clause 5.2C, 5.7A, and the Error Vector Magnitude (EVM) with HS-DPCCH test in clause 5.13.1A, and HSDPA EVM with phase discontinuity in clause 5.13.1AA, ΔACK and $\Delta NACK = 30/15$ with $\beta_{hs} = 30/15 * \beta_c$, and $\Delta CQI = 24/15$ with $\beta_{hs} = 24/15 * \beta_c$.

Note 3: CM = 1 for $\beta_c/\beta_d = 12/15$, $hs/c = 24/15$. For all other combinations of DPDCH, DPCCH and HS-DPCCH the MPR is based on the relative CM difference. This is applicable for only UEs that support HSDPA in release 6 and later releases.

Note 4: For subtest 2 the c/d ratio of 12/15 for the TFC during the measurement period (TF1, TF0) is achieved by setting the signalled gain factors for the reference TFC (TF1, TF1) to $c = 11/15$ and $d = 15/15$.

HSUPA Setup Configuration:

- The EUT was connected to Base Station Agilent E5515C referred to the Setup Configuration.
- The RF path losses were compensated into the measurements.
- A call was established between EUT and Base Station with following setting * :
 - (1) Call Configs = 5.2B, 5.9B, 5.10B, and 5.13.2B with QPSK
 - (2) Set the Gain Factors (β_c and β_d) and parameters (AG Index) were set according to each specific sub-test in the following table, C11.1.3, quoted from the TS 34.121
 - (3) Set Cell Power = -86 dBm
 - (4) Set Channel Type = 12.2k + HSPA
 - (5) Set UE Target Power
 - (6) Power Ctrl Mode= Alternating bits
 - (7) Set and observe the E-TFCI
 - (8) Confirm that E-TFCI is equal to the target E-TFCI of 75 for sub-test 1, and other subtest's E-TFCI
- The transmitted maximum output power was recorded.

Table C.11.1.3: β values for transmitter characteristics tests with HS-DPCCH and E-DCH

Sub-t est	β_c	β_d	β_d (SF)	β_c/β_d	β_{HS} (Note1)	β_{ec}	β_{ed} (Note 4) (Note 5)	β_{ed} (SF)	β_{ed} (Codes)	CM (dB) (Note 2)	MPR (dB) (Note 2) (Note 6)	AG Index (Note 5)	E-TFCI
1	11/15 (Note 3)	15/15 (Note 3)	64	11/15 (Note 3)	22/15	209/225	1309/225	4	1	1.0	0.0	20	75
2	6/15	15/15	64	6/15	12/15	12/15	94/75	4	1	3.0	2.0	12	67
3	15/15	9/15	64	15/9	30/15	30/15	β_{ed1} : 47/15 β_{ed2} : 47/15	4 4	2	2.0	1.0	15	92
4	2/15	15/15	64	2/15	4/15	2/15	56/75	4	1	3.0	2.0	17	71
5	15/15	0	-	-	5/15	5/15	47/15	4	1	1.0	0.0	12	67

Note 1: For sub-test 1 to 4, ΔACK , $\Delta NACK$ and $\Delta CQI = 30/15$ with $\beta_{hs} = 30/15 * \beta_c$. For sub-test 5, ΔACK , $\Delta NACK$ and $\Delta CQI = 5/15$ with $\beta_{hs} = 5/15 * \beta_c$.

Note 2: CM = 1 for $\beta_c/\beta_d = 12/15$, $\beta_{hs}/\beta_c = 24/15$. For all other combinations of DPDCH, DPCCH, HS-DPCCH, E-DPDCH and E-DPCCH the MPR is based on the relative CM difference.

Note 3: For subtest 1 the β_c/β_d ratio of 11/15 for the TFC during the measurement period (TF1, TF0) is achieved by setting the signalled gain factors for the reference TFC (TF1, TF1) to $\beta_c = 10/15$ and $\beta_d = 15/15$.

Note 4: In case of testing by UE using E-DPDCH Physical Layer category 1, Sub-test 3 is omitted according to TS25.306 Table 5.1g.

Note 5: β_{ed} cannot be set directly; it is set by Absolute Grant Value.

Note 6: For subtests 2, 3 and 4, UE may perform E-DPDCH power scaling at max power which could results in slightly smaller MPR values.

UMTS BAND II

Mode	Frequency (MHz)	Avg. Burst Power (dBm)
WCDMA 1900 RMC	1852.4	21.31
	1880	21.29
	1907.6	21.23
WCDMA 1900 AMR	1852.4	21.18
	1880	21.13
	1907.6	21.11
HSDPA Subtest 1	1852.4	20.43
	1880	20.41
	1907.6	20.38
HSDPA Subtest 2	1852.4	20.35
	1880	20.32
	1907.6	20.29
HSDPA Subtest 3	1852.4	20.32
	1880	20.28
	1907.6	20.22
HSDPA Subtest 4	1852.4	20.39
	1880	20.33
	1907.6	20.31
HSUPA Subtest 1	1852.4	20.35
	1880	20.32
	1907.6	20.28
HSUPA Subtest 2	1852.4	20.36
	1880	20.34
	1907.6	20.35
HSUPA Subtest 3	1852.4	20.29
	1880	20.25
	1907.6	20.23
HSUPA Subtest 4	1852.4	20.26
	1880	20.21
	1907.6	20.18
HSUPA Subtest 5	1852.4	20.34
	1880	20.31
	1907.6	20.27

UMTS BAND V

Mode	Frequency (MHz)	Avg. Burst Power (dBm)
WCDMA 850 RMC	826.4	21.37
	836.6	21.35
	846.6	21.28
WCDMA 850 AMR	826.4	21.15
	836.6	21.12
	846.6	21.11
HSDPA Subtest 1	826.4	20.34
	836.6	20.32
	846.6	20.27
HSDPA Subtest 2	826.4	20.33
	836.6	20.28
	846.6	20.24
HSDPA Subtest 3	826.4	20.36
	836.6	20.31
	846.6	20.28
HSDPA Subtest 4	826.4	20.36
	836.6	20.34
	846.6	20.28
HSUPA Subtest 1	826.4	20.29
	836.6	20.26
	846.6	20.24
HSUPA Subtest 2	826.4	20.26
	836.6	20.23
	846.6	20.21
HSUPA Subtest 3	826.4	20.37
	836.6	20.35
	846.6	20.32
HSUPA Subtest 4	826.4	20.37
	836.6	20.35
	846.6	20.31
HSUPA Subtest 5	826.4	20.38
	836.6	20.33
	846.6	20.32

Bluetooth

Modulation	Channel	Frequency(MHz)	Average Power (dBm)
GFSK	0	2402	-2.94
	39	2441	-2.76
	78	2480	-3.03
π /4-DQPSK	0	2402	-3.71
	39	2441	-3.67
	78	2480	-3.95
8-DPSK	0	2402	-3.75
	39	2441	-3.65
	78	2480	-3.9

According to 3GPP 25.101 sub-clause 6.2.2 , the maximum output power is allowed to be reduced by following the table.

Table 6.1aA: UE maximum output power with HS-DPCCH and E-DCH

UE Transmit Channel Configuration	CM(db)	MPR(db)
For all combinations of ,DPDCH,DPCCH HS-DPDCH,E-DPDCH and E-DPCCH	$0 \leq CM \leq 3.5$	$\text{MAX}(CM-1,0)$
Note: $CM=1$ for $\beta_d/\beta_{d=12/15}$, $\beta_{hs}/\beta_{c=24/15}$. For all other combinations of DPDCH, DPCCH, HS-DPCCH, E-DPDCH and E-DPCCH the MPR is based on the relative CM difference.		

The device supports MPR to solve linearity issues (ACLR or SEM) due to the higher peak-to average ratios (PAR) of the HSUPA signal. This prevents saturating the full range of the TX DAC inside of device and provides a reduced power output to the RF transceiver chip according to the Cubic Metric (a function of the combinations of DPDCH, DPCCH, HS-DPCCH, E-DPDCH and E-DPCCH).

When E-DPDCH channels are present the beta gains on those channels are reduced firsts to try to get the power under the allowed limit. If the beta gains are lowered as far as possible, then a hard limiting is applied at the maximum allowed level.

The SW currently recalculates the cubic metric every time the beta gains on the E-DPDCH are reduced. The cubic metric will likely get lower each time this is done .However, there is no reported reduction of maximum output power in the HSUPA mode since the device also provides a compensation for the power back-off by increasing the gain of TX_AGC in the transceiver (PA) device.

The end effect is that the DUT output power is identical to the case where there is no MPR in the device.

12. TEST RESULTS

12.1. SAR Test Results Summary

12.1.1. Test position and configuration

Head SAR was performed with the device configured in the positions according to IEEE 1528-2003, and Body SAR was performed with the device 10 mm from the phantom.

12.1.2. Operation Mode

1. Per KDB 447498 D01 v05r02 ,for each exposure position, if the highest 1-g SAR is ≤ 0.8 W/kg, testing for low and high channel is optional.
2. Per KDB 865664 D01 v01r03,for each frequency band, if the measured SAR is ≥ 0.8 W/Kg, testing for repeated SAR measurement is required , that the highest measured SAR is only to be tested. When the SAR results are near the limit, the following procedures are required for each device to verify these types of SAR measurement related variation concerns by repeating the highest measured SAR configuration in each frequency band.
 - (1) When the original highest measured SAR is ≥ 0.8 W/Kg, repeat that measurement once.
 - (2) Perform a second repeated measurement only if the ratio of largest to smallest SAR for the original and first repeated measurements is > 1.20 or when the original or repeated measurement is ≥ 1.45 W/Kg.
 - (3) Perform a third repeated measurement only if the original, first and second repeated measurement is ≥ 1.5 W/Kg and ratio of largest to smallest SAR for the original, first and second measurement is ≥ 1.20 .
3. Body-worn exposure conditions are intended to voice call operations, therefore GSM voice call mode is selected to be test.
4. Per KDB 648474 D04 v01r02,when the reported SAR for a body-worn accessory measured without a headset connected to the handset is ≤ 1.2 W/Kg, SAR testing with a headset connected is not required.
5. Per 248227 D01 v01r02, SAR is not required for 802.11g channels when the maximum average output power is less than 1/4dB higher than measured on the corresponding 802.11b channels.
6. Maximum Scaling SAR in order to calculate the Maximum SAR values to test under the standard Peak Power, Calculation method is as follows:
Maximum Scaling SAR =tested SAR (Max.) \times [maximum turn-up power (mw)/ maximum measurement output power(mw)]

12.1.3. Test Result

SAR MEASUREMENT									
Product: 3G Feature phone					Depth of Liquid (cm):>15				
Test Mode: GSM850 with GMSK modulation									
Position	Mode	Ch.	Fr. (MHz)	Power Drift (<±0.2db)	SAR (1g) (W/kg)	Max. Turn-up Power (dBm)	Meas. output Power (dBm)	Scaled SAR (W/Kg)	Limit W/kg
SIM 1 Card									
Left Cheek	voice	190	836.6	0.02	0.374	32.00	31.21	0.449	1.6
Left Tilt	voice	190	836.6	-0.01	0.233	32.00	31.21	0.279	1.6
Right Cheek	voice	190	836.6	-0.02	0.448	32.00	31.21	0.537	1.6
Right Tilt	voice	190	836.6	0.11	0.238	32.00	31.21	0.285	1.6
Body back	voice	128	824.2	0.01	0.711	32.00	31.25	0.845	1.6
Body back	voice	190	836.6	0.08	0.753	32.00	31.21	0.903	1.6
Body back	voice	251	848.8	-0.78	0.706	32.00	31.14	0.861	1.6
Body front	voice	190	836.6	0.04	0.378	32.00	31.21	0.453	1.6
Left Cheek	GPRS-2 slot	190	836.6	-0.06	0.494	30.00	28.28	0.734	1.6
Left Tilt	GPRS-2 slot	190	836.6	-0.07	0.286	30.00	28.28	0.425	1.6
Right Cheek	GPRS-2 slot	190	836.6	-0.12	0.478	30.00	28.28	0.710	1.6
Right Tilt	GPRS-2 slot	190	836.6	-0.12	0.306	30.00	28.28	0.455	1.6
Body back	GPRS-2 slot	128	824.2	0.01	0.871	30.00	28.34	1.276	1.6
Body back	GPRS-2 slot	190	836.6	-0.01	0.903	30.00	28.28	1.342	1.6
Body back	GPRS-2 slot	251	848.8	0.02	0.939	30.00	28.24	1.408	1.6
Body front	GPRS-2 slot	190	836.6	0	0.538	30.00	28.28	0.799	1.6
Edge 1 (Top)	GPRS-2 slot	190	836.6	-0.14	0.069	30.00	28.28	0.103	1.6
Edge 2(Right)	GPRS-2 slot	190	836.6	0.05	0.376	30.00	28.28	0.559	1.6
Edge 3(Bottom)	GPRS-2 slot	190	836.6	0.04	0.017	30.00	28.28	0.025	1.6
Edge 4(Left)	GPRS-2 slot	190	836.6	0.01	0.538	30.00	28.28	0.799	1.6
SIM 2 Card									
Left Cheek	GPRS-2 slot	190	836.6	0.03	0.403	30.00	28.28	0.599	1.6
Body back	GPRS-2 slot	251	848.8	-0.02	0.799	30.00	28.24	1.198	1.6

Note:

- When the 1-g Reported SAR is ≤ 0.8 W/kg, testing for low and high channel is optional. Refer to KDB 447498.
- The test separation for body is 10mm of all above table.

SAR MEASUREMENT									
Product: 3G Feature phone					Depth of Liquid (cm):>15				
Test Mode: PCS1900 with GMSK modulation									
Position	Mode	Ch.	Fr. (MHz)	Power Drift (<±0.2db)	SAR (1g) (W/kg)	Max. Turn-up Power (dBm)	Meas. output Power (dBm)	Scaled SAR (W/Kg)	Limit W/kg
SIM 1 Card									
Left Cheek	voice	661	1880.0	0.13	0.638	29.00	28.25	0.758	1.6
Left Tilt	voice	661	1880.0	0.11	0.622	29.00	28.25	0.739	1.6
Right Cheek	voice	661	1880.0	-0.09	0.363	29.00	28.25	0.431	1.6
Right Tilt	voice	661	1880.0	0.19	0.500	29.00	28.25	0.594	1.6
Body back	voice	512	1850.2	0.07	0.934	29.00	28.26	1.108	1.6
Body back	voice	661	1880	0.08	0.844	29.00	28.25	1.003	1.6
Body back	voice	810	1909.8	-0.01	0.767	29.00	28.23	0.916	1.6
Body front	voice	661	1880.0	0.02	0.274	29.00	28.25	0.326	1.6
Left Cheek	GPRS-2 slot	512	1850.2	-0.01	0.580	26.00	25.35	0.674	1.6
Left Cheek	GPRS-2 slot	661	1880	0.17	0.707	26.00	25.32	0.827	1.6
Left Cheek	GPRS-2 slot	810	1909.8	0.02	0.632	26.00	25.29	0.744	1.6
Left Tilt	GPRS-2 slot	512	1850.2	0.06	0.478	26.00	25.35	0.555	1.6
Left Tilt	GPRS-2 slot	661	1880	-0.01	0.687	26.00	25.32	0.803	1.6
Left Tilt	GPRS-2 slot	810	1909.8	-0.08	0.329	26.00	25.29	0.387	1.6
Right Cheek	GPRS-2 slot	661	1880.0	0.05	0.430	26.00	25.32	0.503	1.6
Right Tilt	GPRS-2 slot	661	1880.0	0.18	0.555	26.00	25.32	0.649	1.6
Body back	GPRS-2 slot	512	1850.2	0.05	1.16	26.00	25.35	1.347	1.6
Body back	GPRS-2 slot	661	1880	0.11	0.932	26.00	25.32	1.090	1.6
Body back	GPRS-2 slot	810	1909.8	-0.18	0.741	26.00	25.29	0.873	1.6
Body front	GPRS-2 slot	661	1880.0	0.06	0.235	26.00	25.32	0.275	1.6
Edge 1 (Top)	GPRS-2 slot	661	1880.0	-0.10	0.324	26.00	25.32	0.379	1.6
Edge 2(Right)	GPRS-2 slot	661	1880.0	0.12	0.231	26.00	25.32	0.270	1.6
Edge 3(Bottom)	GPRS-2 slot	661	1880.0	0.08	0.069	26.00	25.32	0.081	1.6
Edge 4(Left)	GPRS-2 slot	661	1880.0	0.17	0.144	26.00	25.32	0.168	1.6
SIM 2 Card									
Left Cheek	GPRS-2 slot	661	1880.0	0.14	0.671	26.00	25.32	0.785	1.6
Body back	GPRS-2 slot	512	1850.2	0.03	0.810	26.00	25.32	0.947	1.6

Note:

- When the 1-g Reported SAR is ≤ 0.8 W/kg, testing for low and high channel is optional. Refer to KDB 447498.
- The test separation for body is 10mm of all above table.

SAR MEASUREMENT									
Product: 3G Feature phone					Depth of Liquid (cm):>15				
Test Mode: WCDMA Band II with QPSK modulation									
Position	Mode	Ch.	Fr. (MHz)	Power Drift (<±0.2db)	SAR (1g) (W/kg)	Max. Turn-up Power (dBm)	Meas. output Power (dBm)	Scaled SAR (W/Kg)	Limit W/kg
SIM 1 Card									
Left Cheek	RMC 12.2kbps	9262	1852.4	0.15	1.12	22.00	21.31	1.313	1.6
Left Cheek	RMC 12.2kbps	9400	1880	-0.06	0.749	22.00	21.29	0.882	1.6
Left Cheek	RMC 12.2kbps	9538	1907.6	0.04	0.920	22.00	21.23	1.098	1.6
Left Tilt	RMC 12.2kbps	9262	1852.4	0.06	0.944	22.00	21.31	1.107	1.6
Left Tilt	RMC 12.2kbps	9400	1880	0.03	0.855	22.00	21.29	1.007	1.6
Left Tilt	RMC 12.2kbps	9538	1907.6	0	0.847	22.00	21.23	1.011	1.6
Right Cheek	RMC 12.2kbps	9400	1880	-0.10	0.587	22.00	21.29	0.691	1.6
Right Tilt	RMC 12.2kbps	9400	1880	-0.03	0.540	22.00	21.29	0.636	1.6
Body back	RMC 12.2kbps	9262	1852.4	-0.02	1.08	22.00	21.31	1.266	1.6
Body back	RMC 12.2kbps	9400	1880	0.14	1.03	22.00	21.29	1.213	1.6
Body back	RMC 12.2kbps	9538	1907.6	0.07	0.944	22.00	21.23	1.127	1.6
Body front	RMC 12.2kbps	9400	1880	0.09	0.293	22.00	21.29	0.345	1.6
Edge 1 (Top)	RMC 12.2kbps	9400	1880	0.02	0.379	22.00	21.29	0.446	1.6
Edge 2(Right)	RMC 12.2kbps	9400	1880	0.09	0.360	22.00	21.29	0.424	1.6
Edge 3(Bottom)	RMC 12.2kbps	9400	1880	0.11	0.136	22.00	21.29	0.160	1.6
Edge 4(Left)	RMC 12.2kbps	9400	1880	0.10	0.224	22.00	21.29	0.264	1.6

Note:

- When the 1-g Reported SAR is ≤ 0.8 W/kg, testing for low and high channel is optional. Refer to KDB 447498.
- The test separation for body is 10mm of all above table.

SAR MEASUREMENT									
Product: 3G Feature phone				Depth of Liquid (cm):>15					
Test Mode: WCDMA Band V with QPSK modulation									
Position	Mode	Ch.	Fr. (MHz)	Power Drift (<±0.2db)	SAR (1g) (W/kg)	Max. Turn-up Power (dBm)	Meas. output Power (dBm)	Scaled SAR (W/Kg)	Limit W/kg
SIM 1 Card									
Left Cheek	RMC 12.2kbps	4183	836.6	-0.06	0.369	22.00	21.35	0.429	1.6
Left Tilt	RMC 12.2kbps	4183	836.6	0.08	0.233	22.00	21.35	0.271	1.6
Right Cheek	RMC 12.2kbps	4183	836.6	-0.01	0.486	22.00	21.35	0.564	1.6
Right Tilt	RMC 12.2kbps	4183	836.6	0.15	0.283	22.00	21.35	0.329	1.6
Body back	RMC 12.2kbps	4132	826.4	-0.03	0.805	22.00	21.37	0.931	1.6
Body back	RMC 12.2kbps	4183	836.6	-0.05	0.744	22.00	21.35	0.864	1.6
Body back	RMC 12.2kbps	4233	846.6	0.04	0.807	22.00	21.28	0.953	1.6
Body front	RMC 12.2kbps	4183	836.6	0.03	0.383	22.00	21.35	0.445	1.6
Edge 1 (Top)	RMC 12.2kbps	4183	836.6	-0.02	0.095	22.00	21.35	0.110	1.6
Edge 2(Right)	RMC 12.2kbps	4183	836.6	0.08	0.386	22.00	21.35	0.448	1.6
Edge 3(Bottom)	RMC 12.2kbps	4183	836.6	-0.02	0.094	22.00	21.35	0.109	1.6
Edge 4(Left)	RMC 12.2kbps	4183	836.6	0.05	0.606	22.00	21.35	0.704	1.6

Note:

- When the 1-g Reported SAR is ≤ 0.8 W/kg, testing for low and high channel is optional. Refer to KDB 447498.
- The test separation for body is 10mm of all above table.

Repeated SAR										
Product: 3G Feature phone										
Test Mode: WCDMA Band II & WCDMA Band V with QPSK modulation										
Position	Mode	Ch.	Fr. (MHz)	Power Drift (<±0.2)	Once SAR (1g) (W/kg)	Power Drift (<±0.2)	Twice SAR (1g) (W/kg)	Power Drift (<±0.2)	Third SAR (1g) (W/kg)	Limit W/kg
Body back	GPRS-2 slot	251	848.8	-0.02	0.820	-	-	-	-	1.6
Body back	GPRS-2 slot	512	1850.2	0.07	0.879	-	-	-	-	1.6
Body back	RMC 12.2kbps	4233	846.6	-0.02	0.669	-	-	-	-	1.6
Left Cheek	RMC 12.2kbps	9262	1852.4	0.19	0.960	-	-	-	-	1.6
Left Cheek	GPRS-2 slot	661	1880	-0.12	0.700	-	-	-	-	1.6
Body back	RMC 12.2kbps	9262	1852.4	0.14	0.956	-	-	-	-	1.6

Simultaneous Multi-band Transmission Evaluation:

Application Simultaneous Transmission information:

NO	Simultaneous state	Portable Handset			Note
		Head	Body-worn	Hotspot	
1	GSM(voice)+Bluetooth(data)	Yes	Yes	-	-
2	GSM(Data)+Bluetooth(data)	Yes	Yes		
3	WCDMA(voice)+Bluetooth(data)	Yes	Yes	-	-

NOTE:

- For simultaneous transmission at head and body exposure position, 2 transmitters simultaneous transmission was the worst state.
- Based upon KDB 447498 D01, BT SAR is excluded as below table.
- Based upon KDB 447498 D01, for handsets the test separation distance is determined by the smallest distance between the outer surface of the device and the user; which is 0mm for head SAR AND 10mm for body-worn SAR.
- If the test separation distance is <5mm, 5mm is used for excluded SAR calculation.
- For minimum test separation distance $\leq 50\text{mm}$, Bluetooth standalone SAR is excluded according to $[(\text{max. power of channel, including tune-up tolerance, mW}) / (\text{min. test separation distance, mm}) \cdot \sqrt{f \text{ (GHz)}} / x] \leq 3.0$ for 1-g SAR and ≤ 7.5 for 10-g extremity SAR
- KDB 447498 / 4.3.2 (2) when standalone SAR test exclusion applies to an antenna that transmits simultaneously with other antennas, the standalone SAR must be estimated according to following to determine simultaneous transmission SAR test exclusion:
 - $(\text{max. power of channel, including tune-up tolerance, mW}) / (\text{min. test separation distance, mm}) \cdot \sqrt{f \text{ (GHz)}} / x$ W/kg for test separation distances $\leq 50 \text{ mm}$;
Where $x = 7.5$ for 1-g SAR, and $x = 18.75$ for 10-g SAR.
 - 0.4W/Kg for 1-g SAR and 1.0W/Kg for 10-g SAR, when the separation distance is $>50\text{mm}$.

Estimated SAR		Max Power including Tune-up Tolerance		Separation Distance (mm)	Estimated SAR (W/kg)
		dBm	mW		
BT	Head	-2	0.631	0	0.026
	Body			10	0.013

Maximum test results (WWAN) with BT SAR:

BT: Head (0 cm gap): 0.026 W/kg and Body (1.0 cm gap): 0.013 W/kg

Sum of the SAR for GSM 850 & BT:

RF Exposure Conditions	Test Position	Simultaneous Transmission Scenario		Σ 1-g SAR (W/Kg)	SPLSR (Yes/No)
		GSM 850 Band	Bluetooth		
Head (voice)	Left Touch	0.449	0.026	0.475	No
	Left Tilt	0.279	0.026	0.305	No
	Right Touch	0.537	0.026	0.563	No
	Right Tilt	0.285	0.026	0.311	No
Body-worn	Rear	0.903	0.013	0.916	No
	Front	0.453	0.013	0.466	No
Head (Data)	Left Touch	0.734	0.026	0.760	No
	Left Tilt	0.425	0.026	0.451	No
	Right Touch	0.710	0.026	0.736	No
	Right Tilt	0.455	0.026	0.481	No
GPRS	Rear	1.408	0.013	1.421	No
	Front	0.799	0.013	0.812	No
	Edge 1	0.103	0.013	0.116	No
	Edge 2	0.559	0.013	0.572	No
	Edge 3	0.025	0.013	0.038	No
	Edge 4	0.799	0.013	0.812	No

Note:

- According to KDB 447498 D01 General RF Exposure Guidance, when the simultaneous transmission SAR is less than 1.6 W/Kg, SPLSR assessment is not required.
- SPLSR mean is “The SAR to Peak Location Separation Ratio “

Sum of the SAR for GSM 1900 & BT:

RF Exposure Conditions	Test Position	Simultaneous Transmission Scenario		Σ 1-g SAR (W/Kg)	SPLSR (Yes/No)
		GSM 1900 Band	Bluetooth		
Head (voice)	Left Touch	0.758	0.026	0.784	No
	Left Tilt	0.739	0.026	0.765	No
	Right Touch	0.431	0.026	0.457	No
	Right Tilt	0.594	0.026	0.62	No
Body-worn	Rear	1.108	0.013	1.121	No
	Front	0.326	0.013	0.339	No
Head (Data)	Left Touch	0.827	0.026	0.853	No
	Left Tilt	0.803	0.026	0.829	No
	Right Touch	0.503	0.026	0.529	No
	Right Tilt	0.649	0.026	0.675	No
GPRS	Rear	1.347	0.013	1.360	No
	Front	0.275	0.013	0.288	No
	Edge 1	0.379	0.013	0.392	No
	Edge 2	0.270	0.013	0.283	No
	Edge 3	0.081	0.013	0.094	No
	Edge 4	0.168	0.013	0.181	No

Note:

- According to KDB 447498 D01 General RF Exposure Guidance, when the simultaneous transmission SAR is less than 1.6 W/Kg, SPLSR assessment is not required.
- SPLSR mean is “The SAR to Peak Location Separation Ratio “

Sum of the SAR for WCDMA Band II & BT:

RF Exposure Conditions	Test Position	Simultaneous Transmission Scenario		Σ 1-g SAR (W/Kg)	SPLSR (Yes/No)
		Band II Band	Bluetooth		
Head	Left Touch	1.313	0.026	1.339	No
	Left Tilt	1.107	0.026	1.133	No
	Right Touch	0.691	0.026	0.717	No
	Right Tilt	0.636	0.026	0.662	No
Body-worn	Rear	1.266	0.013	1.279	No
	Front	0.345	0.013	0.358	No
	Edge 1	0.446	0.013	0.459	No
	Edge 2	0.424	0.013	0.437	No
	Edge 3	0.160	0.013	0.173	No
	Edge 4	0.264	0.013	0.277	No

Note:

- According to KDB 447498 D01 General RF Exposure Guidance, when the simultaneous transmission SAR is less than 1.6 W/Kg, SPLSR assessment is not required.
- SPLSR mean is “The SAR to Peak Location Separation Ratio “

Sum of the SAR for WCDMA Band V & BT:

RF Exposure Conditions	Test Position	Simultaneous Transmission Scenario		Σ 1-g SAR (W/Kg)	SPLSR (Yes/No)
		Band V Band	Bluetooth		
Head	Left Touch	0.429	0.026	0.455	No
	Left Tilt	0.271	0.026	0.297	No
	Right Touch	0.564	0.026	0.59	No
	Right Tilt	0.329	0.026	0.355	No
Body-worn	Rear	0.953	0.013	0.966	No
	Front	0.445	0.013	0.458	No
	Edge 1	0.110	0.013	0.123	No
	Edge 2	0.448	0.013	0.461	No
	Edge 3	0.109	0.013	0.122	No
	Edge 4	0.704	0.013	0.717	No

Note:

- According to KDB 447498 D01 General RF Exposure Guidance, when the simultaneous transmission SAR is less than 1.6 W/Kg, SPLSR assessment is not required.
- SPLSR mean is “The SAR to Peak Location Separation Ratio “

APPENDIX A. SAR SYSTEM CHECK DATA

Test Laboratory: AGC Lab

Date: June 3, 2015

System Check Head 835 MHz

DUT: Dipole 835MHz Type: SID 835

Communication System CW; Communication System Band: D835 (835.0 MHz); Duty Cycle: 1:1;
Frequency: 835 MHz; Medium parameters used: $f = 835$ MHz; $\sigma = 0.89$ mho/m; $\epsilon_r = 42.01$; $\rho = 1000$ kg/m³ ;
Phantom section: Flat Section; Input Power=21dBm
Ambient temperature (°C): 21.9, Liquid temperature (°C): 21.5, Relative Humidity (%): 52

DASY Configuration:

- Probe: EX3DV4 - SN3953; ConvF(10.12, 10.12, 10.12); Calibrated:11/06/2014;
- Sensor-Surface: 2mm (Mechanical Surface Detection), $z = 1.0, 31.0$
- Electronics: DAE4 Sn1398; Calibrated: 03/11/2015
- Phantom: SAM (20deg probe tilt) with CRP v5.0; Type: QD000P40CD;
- DASY52 52.8.7(1137); SEMCAD X 14.6.10(7164)

Configuration/System Check 835MHz Head/ Area Scan (7x12x1): Measurement grid: $dx=15$ mm, $dy=15$ mm
Maximum value of SAR (measured) = 0.714 W/kg

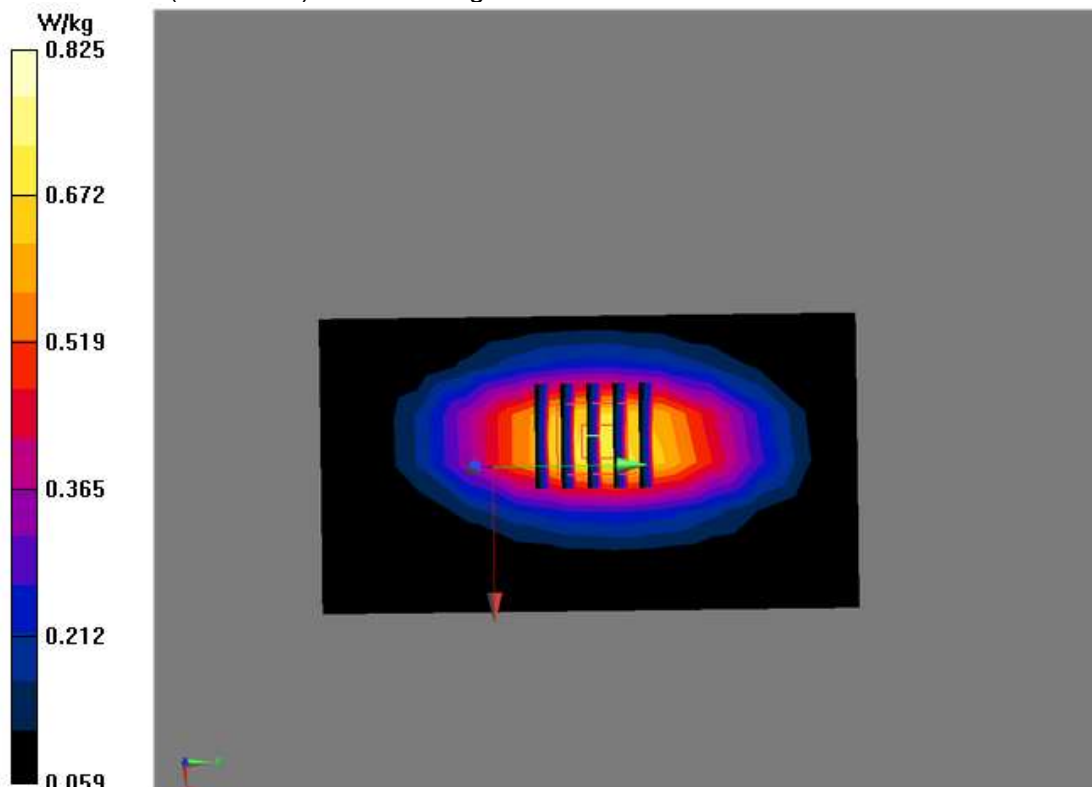
Configuration/System Check 835MHz Head/Zoom Scan (5x5x7)/ Cube 0: Measurement grid: $dx=8$ mm, $dy=8$ mm, $dz=5$ mm

Reference Value = 27.541 V/m; Power Drift =0.13 dB

Peak SAR (extrapolated) = 0.981 W/kg

SAR(1 g) = 0.648 W/kg; SAR(10 g) = 0.418 W/kg

Maximum value of SAR (measured) = 0.825 W/kg



Test Laboratory: AGC Lab

Date: June 4, 2015

System Check Body 835 MHz

DUT: Dipole 835 MHz Type: SID 835

Communication System CW; Communication System Band: D835 (835.0 MHz); Duty Cycle: 1:1;
Frequency: 835 MHz; Medium parameters used: $f = 835$ MHz; $\sigma = 0.96$ mho/m; $\epsilon_r = 55.31$; $\rho = 1000$ kg/m³ ;
Phantom section: Flat Section; Input Power=21dBm

Ambient temperature (°C): 22.5, Liquid temperature (°C): 22.0, Relative Humidity (%): 53

DASY Configuration:

- Probe: EX3DV4 - SN3953; ConvF(10.08,10.08, 10.08); Calibrated: 11/06/2014;
- Sensor-Surface: 2mm (Mechanical Surface Detection), $z = 1.0, 31.0$
- Electronics: DAE4 Sn1398; Calibrated: 03/11/2015
- Phantom: SAM (20deg probe tilt) with CRP v5.0; Type: QD000P40CD;
- DASY52 52.8.7(1137); SEMCAD X 14.6.10(7164)

Configuration/System Check 835MHz Body/ Area Scan (7x12x1): Measurement grid: dx=15mm, dy=15mm
Maximum value of SAR (measured) = 0.735 W/kg

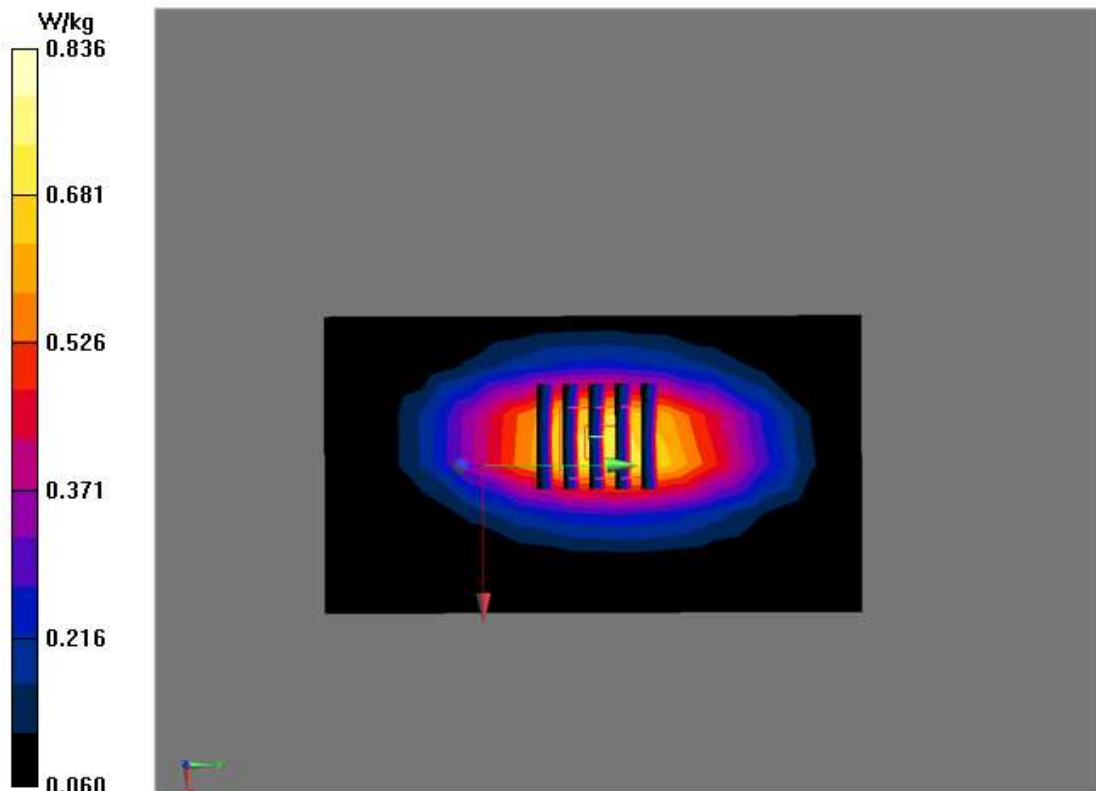
Configuration/System Check 835MHzBody/Zoom Scan (5x5x7)/ Cube 0: Measurement grid: dx=8mm, dy=8mm, dz=5mm

Reference Value =27.007 V/m; Power Drift = -0.01dB

Peak SAR (extrapolated) = 0.991 W/kg

SAR(1 g) =0.660 W/kg; SAR(10 g) = 0.427 W/kg

Maximum value of SAR (measured) = 0.836 W/kg



Test Laboratory: AGC Lab

Date: June 8, 2015

System Check Head 1900MHz

DUT: Dipole 1900 MHz; Type: SID 1900

Communication System: CW; Communication System Band: D1900 (1900.0 MHz); Duty Cycle:1:1;

Frequency: 1900 MHz; Medium parameters used: $f = 1900$ MHz; $\sigma = 1.43$ mho/m; $\epsilon_r = 40.64$; $\rho = 1000$ kg/m³ ;

Phantom section: Flat Section; Input Power=21dBm

Ambient temperature (°C): 22.7, Liquid temperature (°C): 22.4, Relative Humidity (%):53

DASY Configuration:

- Probe: EX3DV4 - SN3953; ConvF(7.89, 7.89, 7.89); Calibrated: 11/06/2014;
- Sensor-Surface: 2mm (Mechanical Surface Detection), $z = 1.0, 31.0$
- Electronics: DAE4 Sn1398; Calibrated: 03/11/2015
- Phantom: SAM (20deg probe tilt) with CRP v5.0; Type: QD000P40CD;
- DASY52 52.8.7(1137); SEMCAD X 14.6.10(7164)

Configuration/System Check 1900MHz Head /Area Scan (6x9x1): Measurement grid: $dx=15$ mm, $dy=15$ mm
Maximum value of SAR (measured) = 3.50 W/kg

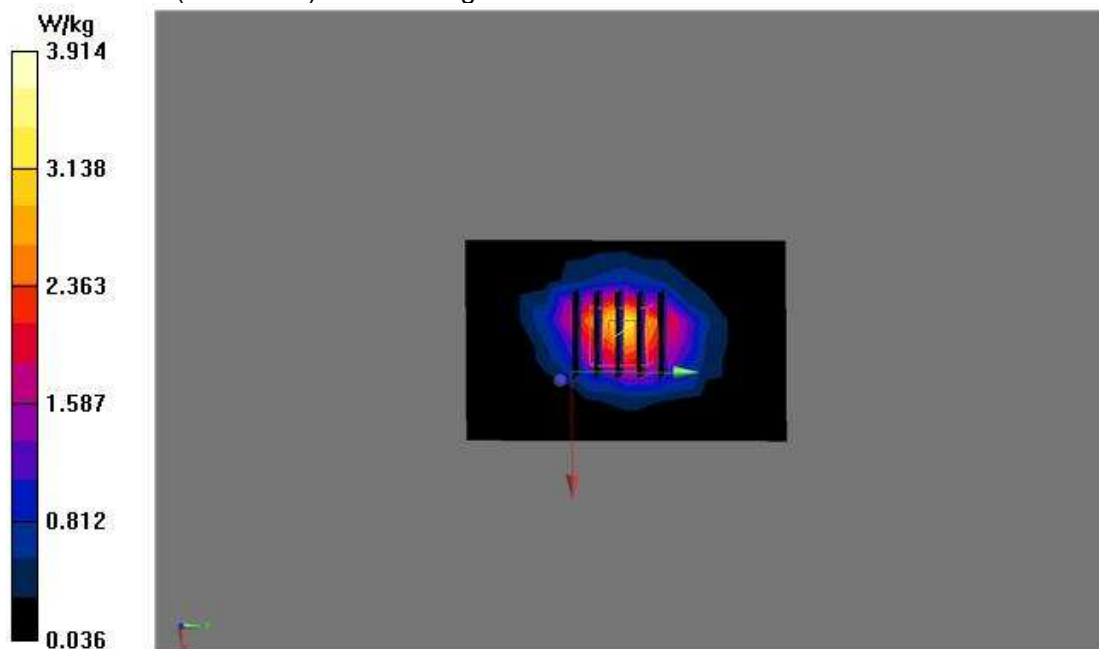
Configuration/System Check 1900MHz Head /Zoom Scan (5x5x7)/Cube 0: Measurement grid: $dx=8$ mm, $dy=8$ mm, $dz=5$ mm

Reference Value = 52.602 V/m; Power Drift = 0.16 dB

Peak SAR (extrapolated) = 5.31 W/kg

SAR(1 g) = 2.55 W/kg; SAR(10 g) = 1.23 W/kg

Maximum value of SAR (measured) = 3.91 W/kg



Test Laboratory: AGC Lab

Date: June 9, 2015

System Check Body 1900MHz

DUT: Dipole 1900 MHz; Type: SID 1900

Communication System: CW; Communication System Band: D1900 (1900.0 MHz); Duty Cycle:1:1;

Frequency: 1900 MHz; Medium parameters used: $f = 1900$ MHz; $\sigma = 1.51$ mho/m; $\epsilon_r = 52.88$; $\rho = 1000$ kg/m³ ;

Phantom section: Flat Section; Input Power=21dBm

Ambient temperature (°C):22.0, Liquid temperature (°C):21.7, Relative Humidity (%): 52

DASY Configuration:

- Probe: EX3DV4 - SN3953; ConvF(7.79,7.79,7.79); Calibrated: 11/06/2014;
- Sensor-Surface: 2mm (Mechanical Surface Detection), $z = 1.0, 31.0$
- Electronics: DAE4 Sn1398; Calibrated: 03/11/2015
- Phantom: SAM (20deg probe tilt) with CRP v5.0; Type: QD000P40CD;
- DASY52 52.8.7(1137); SEMCAD X 14.6.10(7164)

Configuration/System Check 1900MHz Body /Area Scan (6x9x1): Measurement grid: $dx=15$ mm, $dy=15$ mm
Maximum value of SAR (measured) = 3.43 W/kg

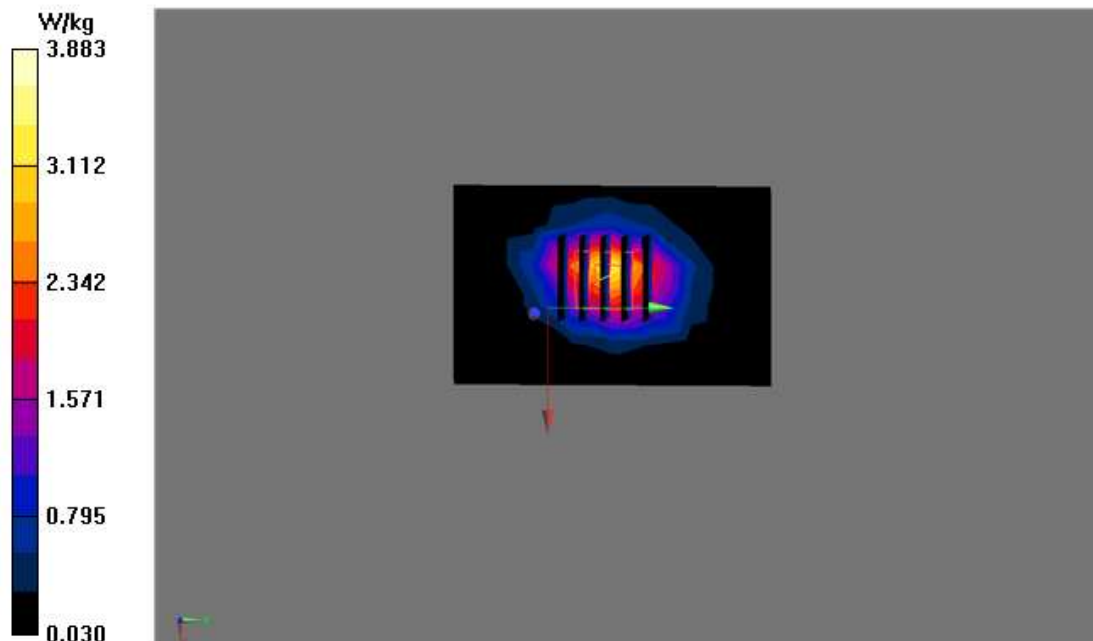
Configuration/System Check 1900MHz Body /Zoom Scan (5x5x7)/Cube 0: Measurement grid: $dx=8$ mm, $dy=8$ mm, $dz=5$ mm

Reference Value = 52.016 V/m; Power Drift =-0.01 dB

Peak SAR (extrapolated) =5.28 W/kg

SAR(1 g) = 2.56 W/kg; SAR(10 g) = 1.28 W/kg

Maximum value of SAR (measured) = 3.88 W/kg



APPENDIX B. SAR MEASUREMENT DATA

Test Laboratory: AGC Lab

Date: June 3, 2015

GSM 850 Mid-Touch-Right <SIM 1>

DUT: 3G Feature phone; Type: B30

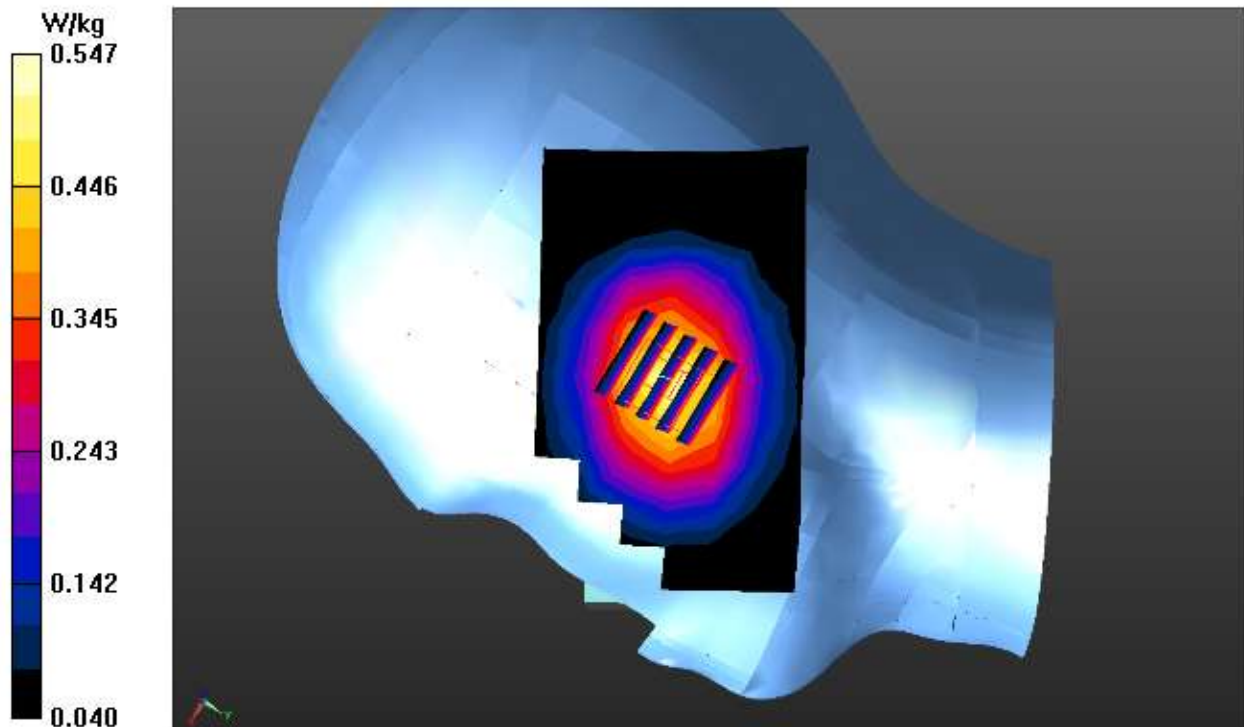
Communication System: UID 0, Generic GSM (0); Communication System Band: GSM 850 (824.2 – 848.8 MHz);
Duty Cycle: 1:8.3; Frequency: 836.6 MHz; Medium parameters used: $f = 835$ MHz; $\sigma = 0.91$ mho/m; $\epsilon_r = 41.85$;
 $\rho = 1000$ kg/m³ ;
Phantom section: Right Section
Ambient temperature (°C): 21.9, Liquid temperature (°C): 21.5

DASY Configuration:

- Probe: EX3DV4 - SN3953; ConvF(10.12, 10.12, 10.12); Calibrated:11/06/2014;
- Sensor-Surface: 2mm (Mechanical Surface Detection), $z = 1.0, 31.0$
- Electronics: DAE4 Sn1398; Calibrated: 03/11/2015
- Phantom: SAM (20deg probe tilt) with CRP v5.0; Type: QD000P40CD;
- DASY52 52.8.7(1137); SEMCAD X 14.6.10(7164)

RIGHT HEAD/R-C/Area Scan (7x11x1): Measurement grid: $dx=15$ mm, $dy=15$ mm
Maximum value of SAR (measured) = 0.533 W/kg

RIGHT HEAD/R-C/Zoom Scan (5x5x7)/Cube 0: Measurement grid: $dx=8$ mm, $dy=8$ mm, $dz=5$ mm
Reference Value = 16.901 V/m; Power Drift = -0.02 dB
Peak SAR (extrapolated) = 0.632 W/kg
SAR(1 g) = 0.448 W/kg; SAR(10 g) = 0.308 W/kg
Maximum value of SAR (measured) = 0.547 W/kg



Test Laboratory: AGC Lab
GSM 850 Mid- Body- Back(MS)<SIM 1>
DUT: 3G Feature phone; Type: B30

Date: June 4, 2015

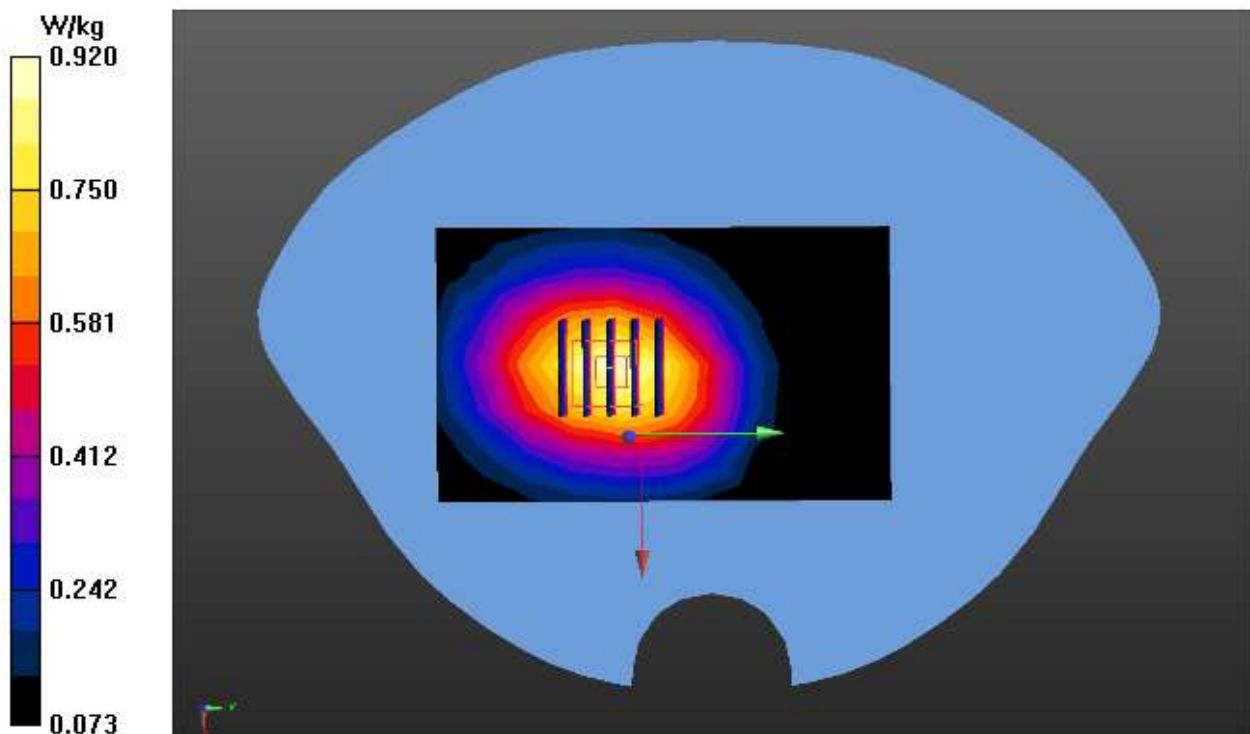
Communication System: UID 0, Generic GSM (0); Communication System Band: GSM 850 (824.2 – 848.8 MHz);
Duty Cycle: 1:8.3; Frequency: 836.6 MHz; Medium parameters used: $f = 835$ MHz; $\sigma = 0.96$ mho/m; $\epsilon_r = 55.07$;
 $\rho = 1000$ kg/m³ ;
Phantom section: Flat Section
Ambient temperature (°C): 22.5, Liquid temperature (°C): 22.0

DASY Configuration:

- Probe: EX3DV4 - SN3953; ConvF(10.08,10.08, 10.08); Calibrated: 11/06/2014;
- Sensor-Surface: 2mm (Mechanical Surface Detection), $z = 1.0, 31.0$
- Electronics: DAE4 Sn1398; Calibrated: 03/11/2015
- Phantom: SAM (20deg probe tilt) with CRP v5.0; Type: QDOVA002AA;
- DASY52 52.8.7(1137); SEMCAD X 14.6.10(7164)

BODY/BACK/Area Scan (7x11x1): Measurement grid: $dx=15$ mm, $dy=15$ mm
Maximum value of SAR (measured) = 0.911 W/kg

BODY/BACK/Zoom Scan (5x5x7)/Cube 0: Measurement grid: $dx=8$ mm, $dy=8$ mm, $dz=5$ mm
Reference Value = 23.848 V/m; Power Drift = 0.08 dB
Peak SAR (extrapolated) = 1.06 W/kg
SAR(1 g) = 0.753 W/kg; SAR(10 g) = 0.519 W/kg
Maximum value of SAR (measured) = 0.920 W/kg



Test Laboratory: AGC Lab
GPRS 850 Mid-Touch-Left (2up) <SIM 1>
DUT: 3G Feature phone; Type: B30

Date: June 3, 2015

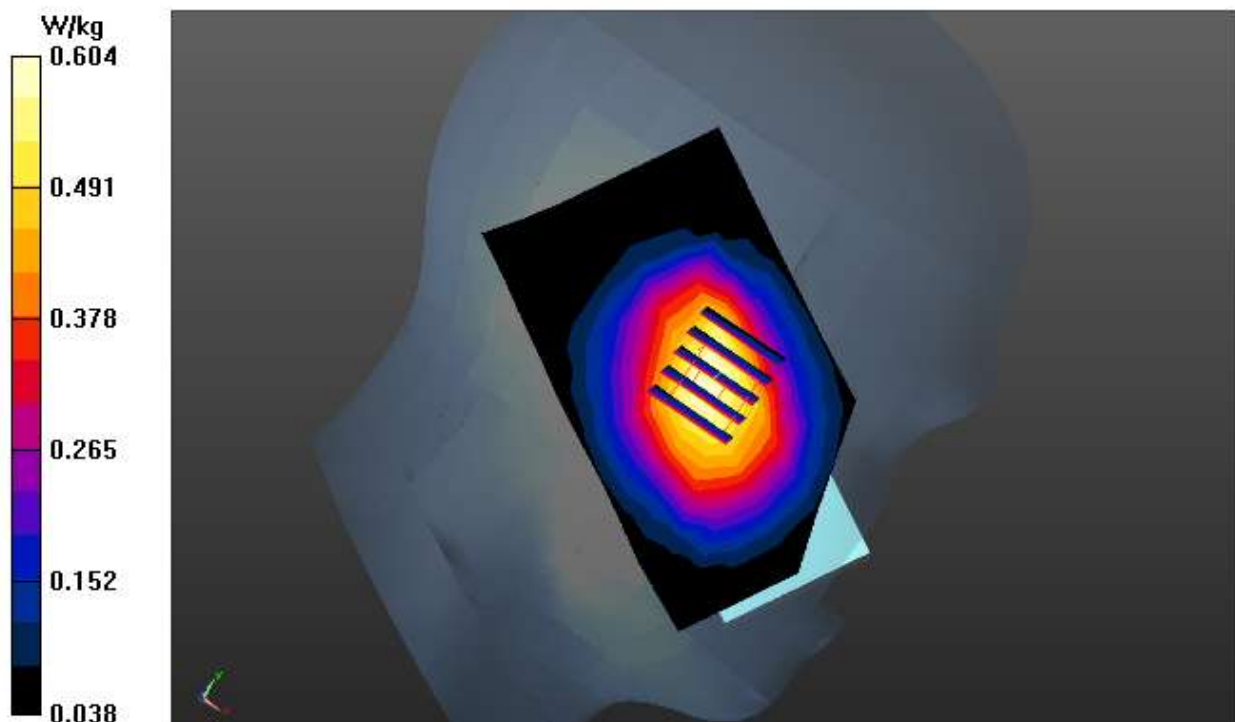
Communication System: : GPRS-2 Slot; Communication System Band: GSM 850 (824.2 – 848.8 MHz); Duty Cycle:1:4.2; Frequency: 836.6 MHz; Medium parameters used: $f = 836.6$ MHz; $\sigma = 0.91$ mho/m; $\epsilon_r = 41.85$; $\rho = 1000$ kg/m³ ;
Phantom section: Left Section
Ambient temperature (°C): 21.9, Liquid temperature (°C): 21.5

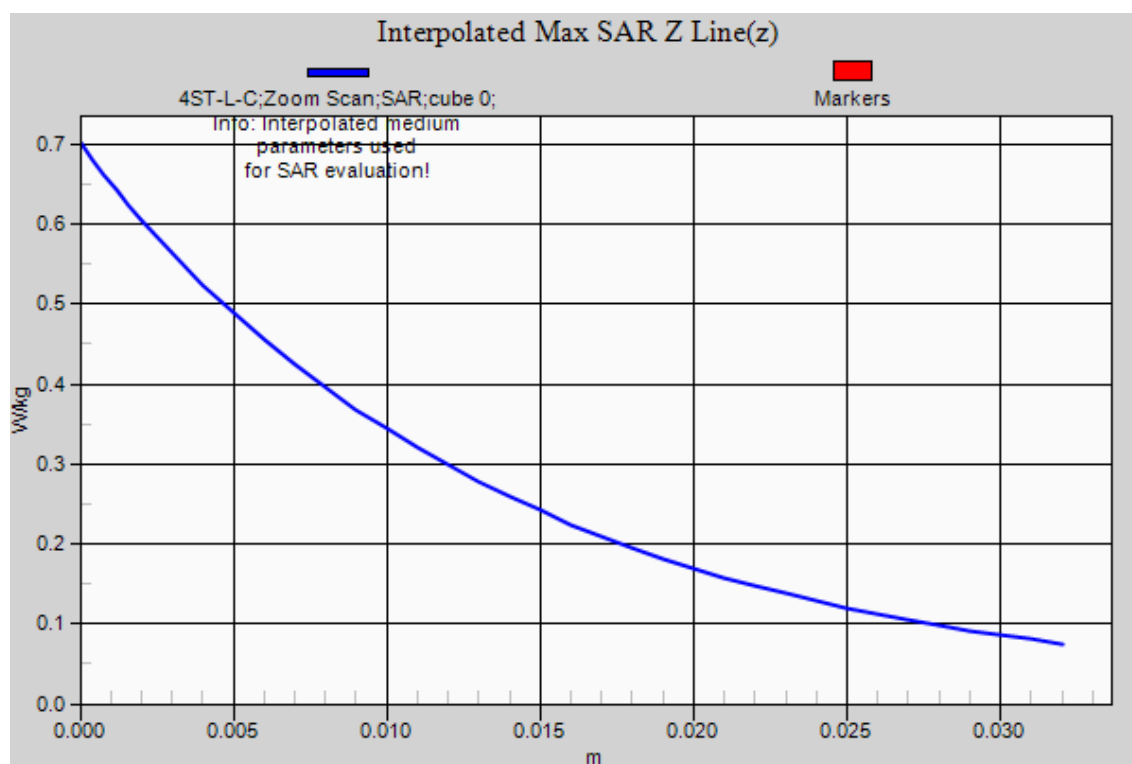
DASY Configuration:

- Probe: EX3DV4 - SN3953; ConvF(10.12, 10.12, 10.12); Calibrated:11/06/2014;
- Sensor-Surface: 2mm (Mechanical Surface Detection), $z = 1.0, 31.0$
- Electronics: DAE4 Sn1398; Calibrated: 03/11/2015
- Phantom: SAM (20deg probe tilt) with CRP v5.0; Type: QD000P40CD;
- DASY52 52.8.7(1137); SEMCAD X 14.6.10(7164)

LEFT HEAD/2ST-L-C/Area Scan (7x11x1): Measurement grid: $dx=15$ mm, $dy=15$ mm
Maximum value of SAR (measured) = 0.628 W/kg

LEFT HEAD/2ST-L-C/Zoom Scan (5x5x7)/Cube 0: Measurement grid: $dx=8$ mm, $dy=8$ mm, $dz=5$ mm
Reference Value = 17.260 V/m; Power Drift = -0.06 dB
Peak SAR (extrapolated) = 0.701 W/kg
SAR(1 g) = 0.494 W/kg; SAR(10 g) = 0.337 W/kg
Maximum value of SAR (measured) = 0.604 W/kg





Test Laboratory: AGC Lab
GPRS 850 Mid-Touch-Left (2up) <SIM 2>
DUT: 3G Feature phone; Type: B30

Date: June 3, 2015

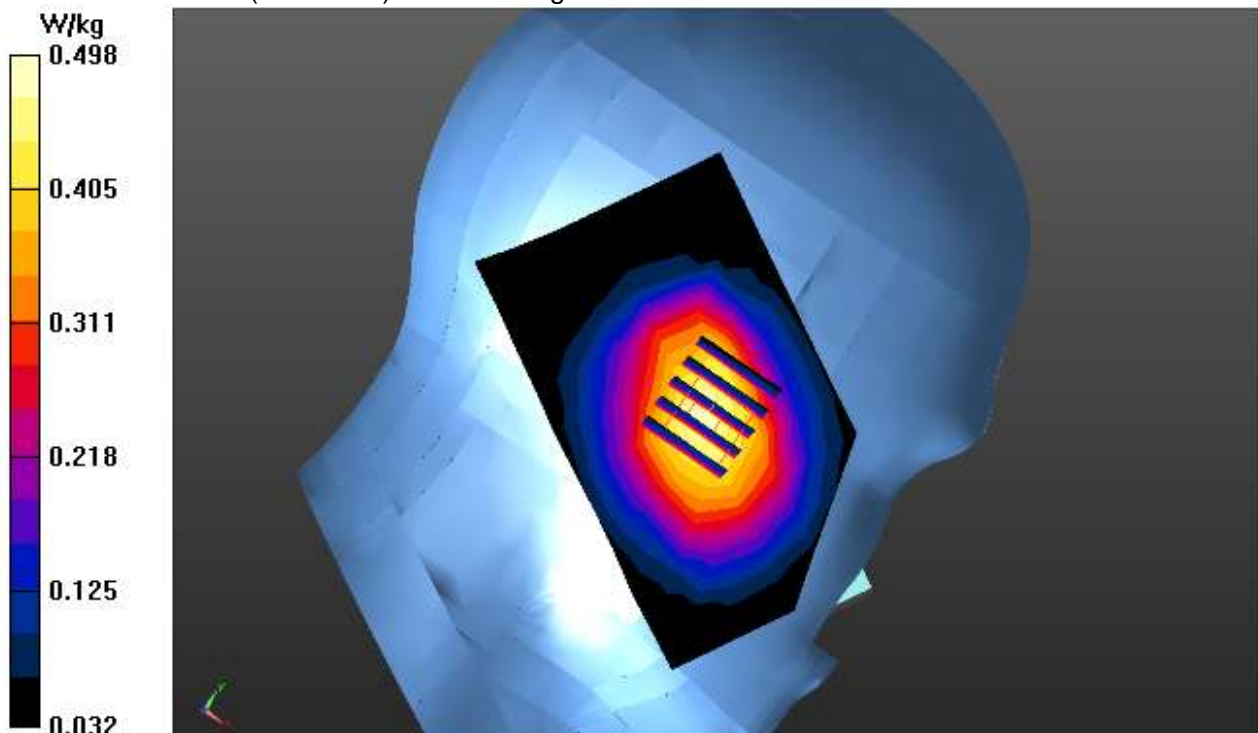
Communication System: : GPRS-2 Slot; Communication System Band: GSM 850 (824.2 – 848.8 MHz); Duty Cycle:1:4.2; Frequency: 836.6 MHz; Medium parameters used: $f = 836.6$ MHz; $\sigma = 0.91$ mho/m; $\epsilon_r = 41.85$; $\rho = 1000$ kg/m³ ;
Phantom section: Left Section
Ambient temperature (°C): 21.9, Liquid temperature (°C): 21.5

DASY Configuration:

- Probe: EX3DV4 - SN3953; ConvF(10.12, 10.12, 10.12); Calibrated:11/06/2014;
- Sensor-Surface: 2mm (Mechanical Surface Detection), $z = 1.0, 31.0$
- Electronics: DAE4 Sn1398; Calibrated: 03/11/2015
- Phantom: SAM (20deg probe tilt) with CRP v5.0; Type: QD000P40CD;
- DASY52 52.8.7(1137); SEMCAD X 14.6.10(7164)

LEFT HEAD/2ST-L-C 2/Area Scan (7x11x1): Measurement grid: $dx=15$ mm, $dy=15$ mm
Maximum value of SAR (measured) = 0.510 W/kg

LEFT HEAD/2ST-L-C 2/Zoom Scan (5x5x7)/Cube 0: Measurement grid: $dx=8$ mm, $dy=8$ mm, $dz=5$ mm
Reference Value = 16.266 V/m; Power Drift = 0.03 dB
Peak SAR (extrapolated) = 0.577 W/kg
SAR(1 g) = 0.403 W/kg; SAR(10 g) = 0.276 W/kg
Maximum value of SAR (measured) = 0.498 W/kg



Test Laboratory: AGC Lab
GPRS 850 High- Body- Back (2up) < SIM 1>
DUT: 3G Feature phone; Type: B30

Date: June 4, 2015

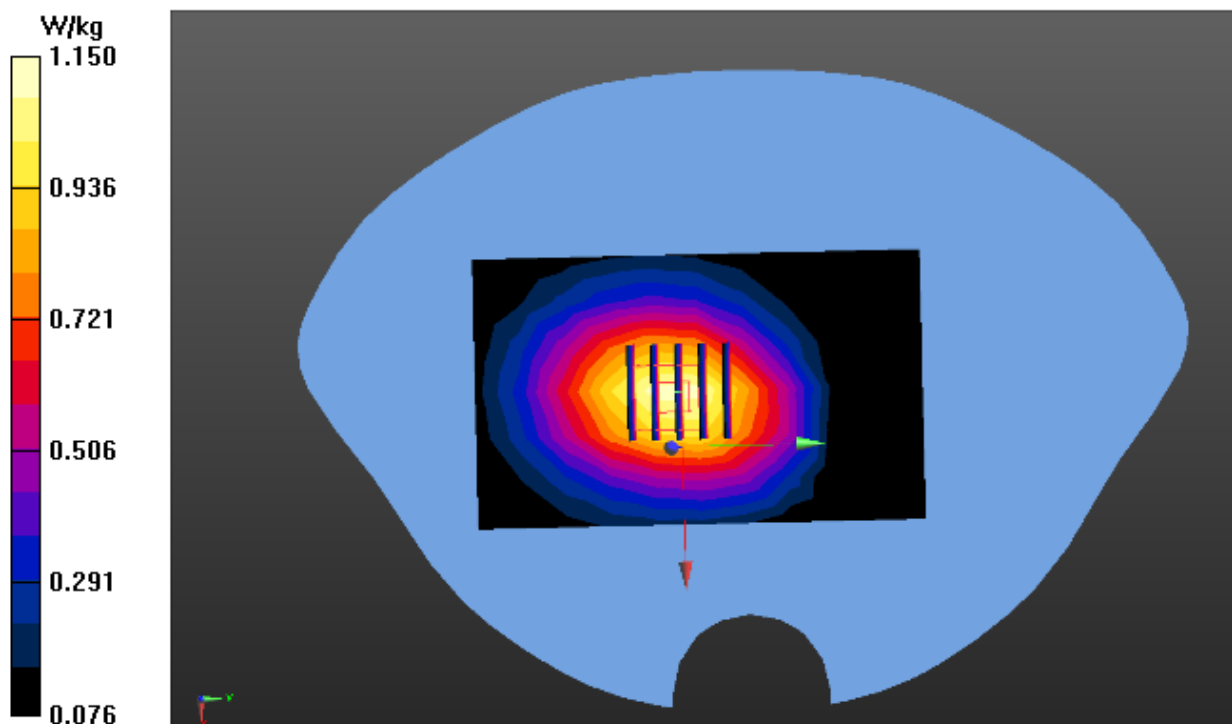
Communication System: GPRS-2 Slot; Communication System Band: GSM 850 (824.2 – 848.8 MHz); Duty Cycle:1:4.2;Frequency: 848.8MHz; Medium parameters used: $f = 835$ MHz; $\sigma = 0.99$ mho/m; $\epsilon_r = 54.53$; $\rho = 1000$ kg/m³ ;
Phantom section: Flat Section
Ambient temperature (°C): 22.5, Liquid temperature (°C): 22.0

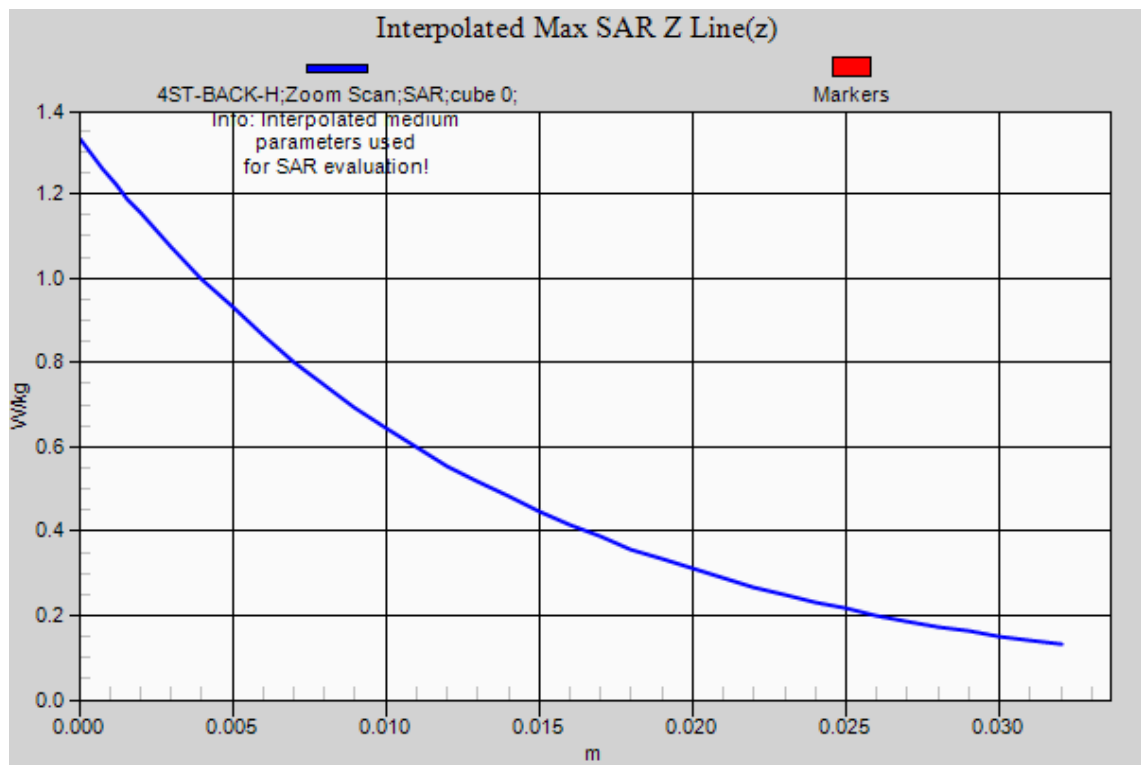
DASY Configuration:

- Probe: EX3DV4 - SN3953; ConvF(10.08,10.08, 10.08); Calibrated: 11/06/2014;
- Sensor-Surface: 2mm (Mechanical Surface Detection), $z = 1.0, 31.0$
- Electronics: DAE4 Sn1398; Calibrated: 03/11/2015
- Phantom: SAM (20deg probe tilt) with CRP v5.0; Type: QDOVA002AA;
- DASY52 52.8.7(1137); SEMCAD X 14.6.10(7164)

BODY/2ST-BACK-H/Area Scan (7x11x1): Measurement grid: $dx=15$ mm, $dy=15$ mm
Maximum value of SAR (measured) = 1.12 W/kg

BODY/2ST-BACK-H/Zoom Scan (5x5x7)/Cube 0: Measurement grid: $dx=8$ mm, $dy=8$ mm, $dz=5$ mm
Reference Value = 29.644 V/m; Power Drift = 0.02 dB
Peak SAR (extrapolated) = 1.33 W/kg
SAR(1 g) = 0.939 W/kg; SAR(10 g) = 0.642 W/kg
Maximum value of SAR (measured) = 1.15 W/kg





Test Laboratory: AGC Lab
GPRS 850 High- Body- Back (2up) < SIM 2>
DUT: 3G Feature phone; Type: B30

Date: June 4, 2015

Communication System: GPRS-2 Slot; Communication System Band: GSM 850 (824.2 – 848.8 MHz); Duty Cycle:1:4.2;Frequency: 848.8MHz; Medium parameters used: $f = 835$ MHz; $\sigma = 0.99$ mho/m; $\epsilon_r = 54.53$; $\rho = 1000$ kg/m³ ;

Phantom section: Flat Section

Ambient temperature (°C): 22.5, Liquid temperature (°C): 22.0

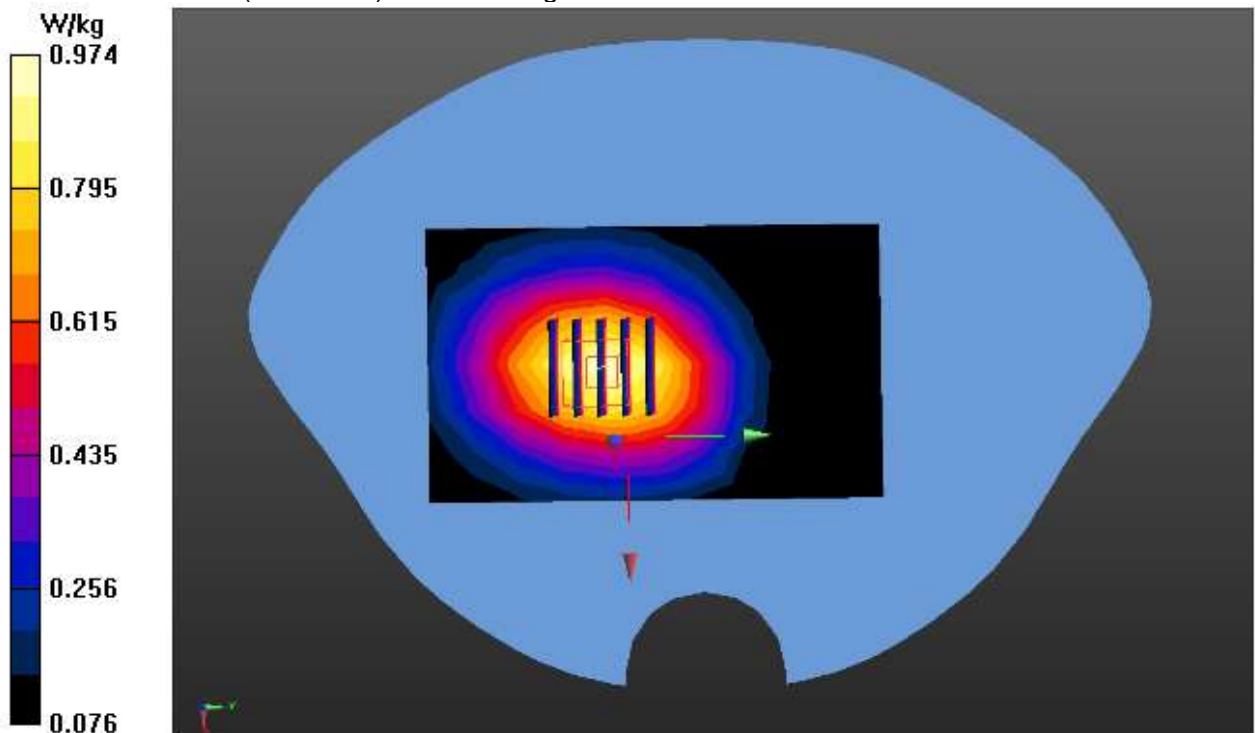
DASY Configuration:

- Probe: EX3DV4 - SN3953; ConvF(10.08,10.08, 10.08); Calibrated: 11/06/2014;
- Sensor-Surface: 2mm (Mechanical Surface Detection), $z = 1.0, 31.0$
- Electronics: DAE4 Sn1398; Calibrated: 03/11/2015
- Phantom: SAM (20deg probe tilt) with CRP v5.0; Type: QDOVA002AA;
- DASY52 52.8.7(1137); SEMCAD X 14.6.10(7164)

BODY/2ST-BACK 2/Area Scan (7x11x1): Measurement grid: $dx=15$ mm, $dy=15$ mm
Maximum value of SAR (measured) = 0.972 W/kg

BODY/2ST-BACK 2/Zoom Scan (5x5x7)/Cube 0: Measurement grid: $dx=8$ mm, $dy=8$ mm, $dz=5$ mm
Reference Value = 24.788 V/m; Power Drift = -0.02 dB
Peak SAR (extrapolated) = 1.12 W/kg

SAR(1 g) = 0.799 W/kg; SAR(10 g) = 0.549 W/kg
Maximum value of SAR (measured) = 0.974 W/kg



Test Laboratory: AGC Lab
PCS 1900 Mid-Touch-Left <SIM 1>
DUT: 3G Feature phone; Type: B30

Date: June 8, 2015

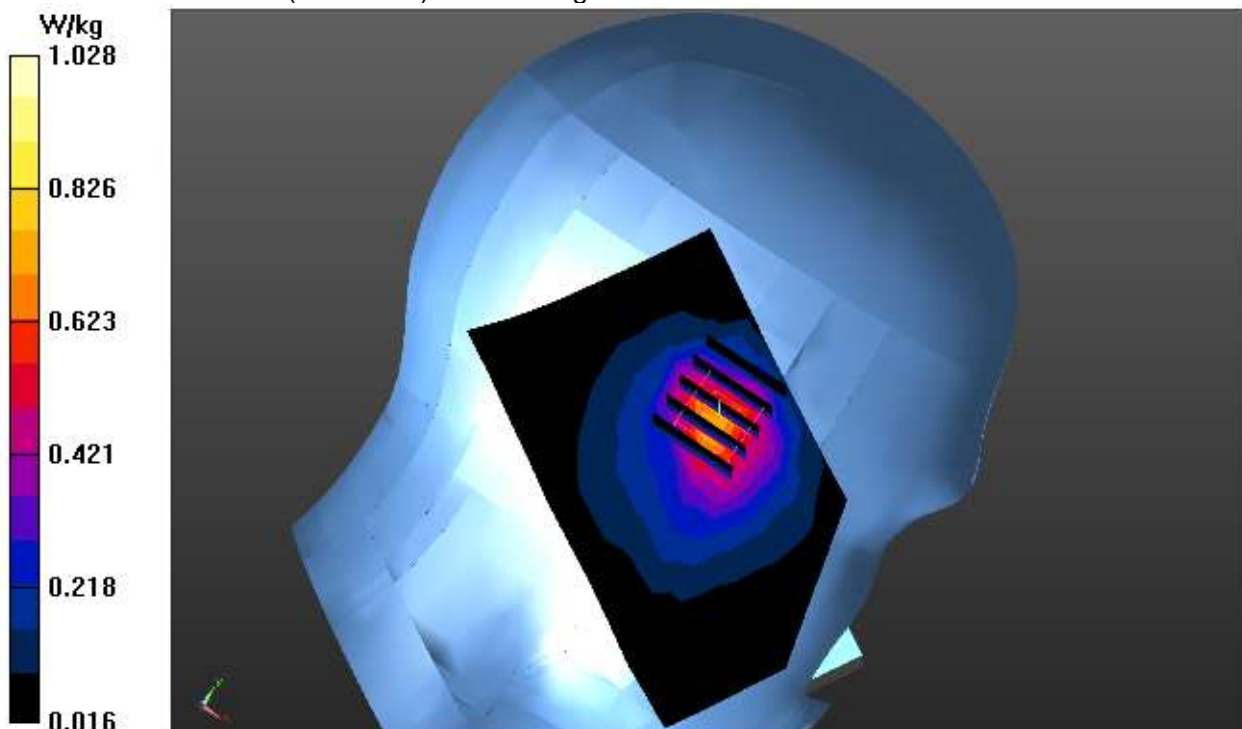
Communication System: UID 0, Generic GSM (0); Communication System Band: PCS 1900 (1850.2 – 1909.8 MHz);
Duty Cycle: 1:8.3; Frequency: 1880 MHz; Medium parameters used: $f = 1900$ MHz; $\sigma = 1.40$ mho/m; $\epsilon_r = 40.92$;
 $\rho = 1000$ kg/m³ ;
Phantom section: Left Section
Ambient temperature (°C): 22.7, Liquid temperature (°C): 22.4

DASY Configuration:

- Probe: EX3DV4 - SN3953; ConvF(7.89, 7.89, 7.89); Calibrated: 11/06/2014;
- Sensor-Surface: 2mm (Mechanical Surface Detection), $z = 1.0, 31.0$
- Electronics: DAE4 Sn1398; Calibrated: 03/11/2015
- Phantom: SAM (20deg probe tilt) with CRP v5.0; Type: QD000P40CD;
- DASY52 52.8.7(1137); SEMCAD X 14.6.10(7164)

LEFT HEAD/L-C/Area Scan (7x11x1): Measurement grid: $dx=15$ mm, $dy=15$ mm
Maximum value of SAR (measured) = 0.810 W/kg

LEFT HEAD/L-C/Zoom Scan (5x5x7)/Cube 0: Measurement grid: $dx=8$ mm, $dy=8$ mm, $dz=5$ mm
Reference Value = 12.932 V/m; Power Drift = 0.13 dB
Peak SAR (extrapolated) = 1.46 W/kg
SAR(1 g) = 0.638 W/kg; SAR(10 g) = 0.305 W/kg
Maximum value of SAR (measured) = 1.03 W/kg



Test Laboratory: AGC Lab
PCS 1900 Low-Body- Back(MS)<SIM 1>
DUT: 3G Feature phone; Type: B30

Date: June 9, 2015

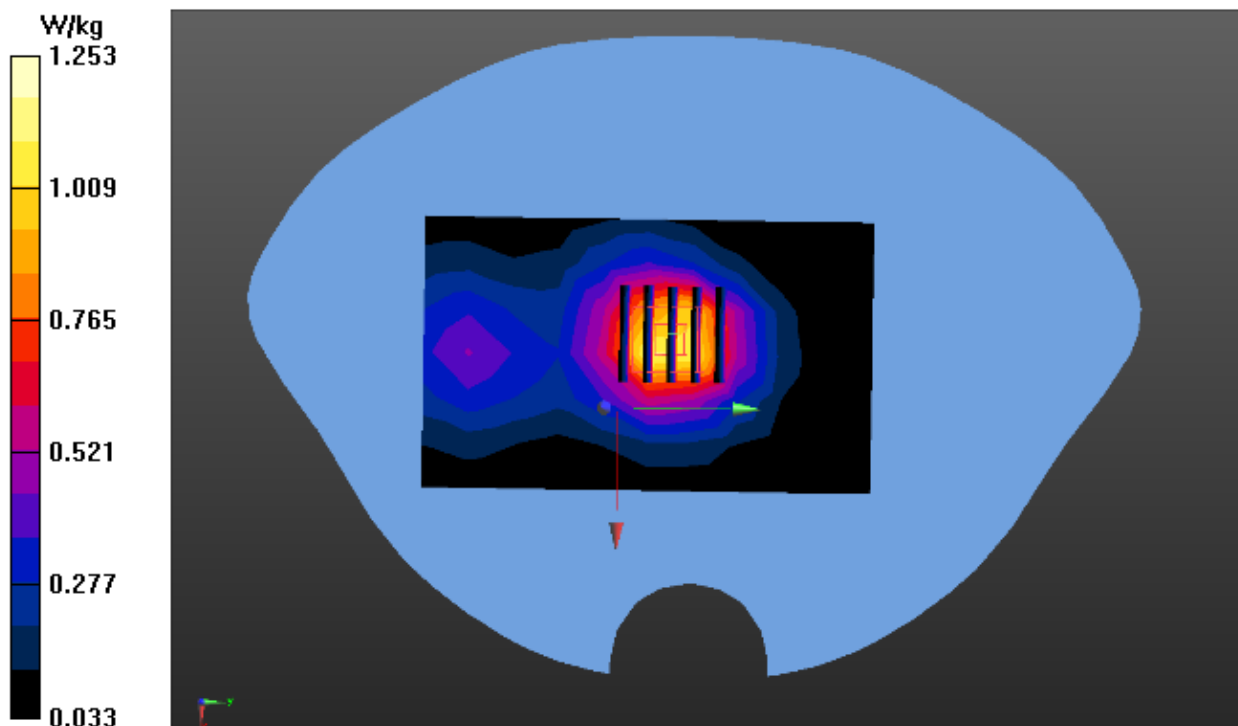
Communication System: UID 0, Generic GSM (0); Communication System Band: PCS 1900 (1850.2 – 1909.8 MHz);
Duty Cycle: 1:8.3; Frequency: 1850.2 MHz; Medium parameters used: $f = 1900$ MHz; $\sigma = 1.46$ mho/m; $\epsilon_r = 53.99$;
 $\rho = 1000$ kg/m³ ;
Phantom section: Flat Section
Ambient temperature (°C):22.0, Liquid temperature (°C):21.7

DASY Configuration:

- Probe: EX3DV4 - SN3953; ConvF(7.79,7.79,7.79); Calibrated: 11/06/2014;
- Sensor-Surface: 2mm (Mechanical Surface Detection), $z = 1.0, 31.0$
- Electronics: DAE4 Sn1398; Calibrated: 03/11/2015
- Phantom: SAM (20deg probe tilt) with CRP v5.0; Type: QD000P40CD;
- DASY52 52.8.7(1137); SEMCAD X 14.6.10(7164)

BODY/BACK-L/Area Scan (7x11x1): Measurement grid: $dx=15$ mm, $dy=15$ mm
Maximum value of SAR (measured) = 1.11 W/kg

BODY/BACK-L/Zoom Scan (5x5x7)/Cube 0: Measurement grid: $dx=8$ mm, $dy=8$ mm, $dz=5$ mm
Reference Value = 27.229 V/m; Power Drift = 0.07 dB
Peak SAR (extrapolated) = 1.58 W/kg
SAR(1 g) = 0.934 W/kg; SAR(10 g) = 0.534 W/kg
Maximum value of SAR (measured) = 1.25 W/kg



Test Laboratory: AGC Lab
GPRS 1900 Mid-Touch-Left (2up) < SIM 1>
DUT: 3G Feature phone; Type: B30

Date: June 8, 2015

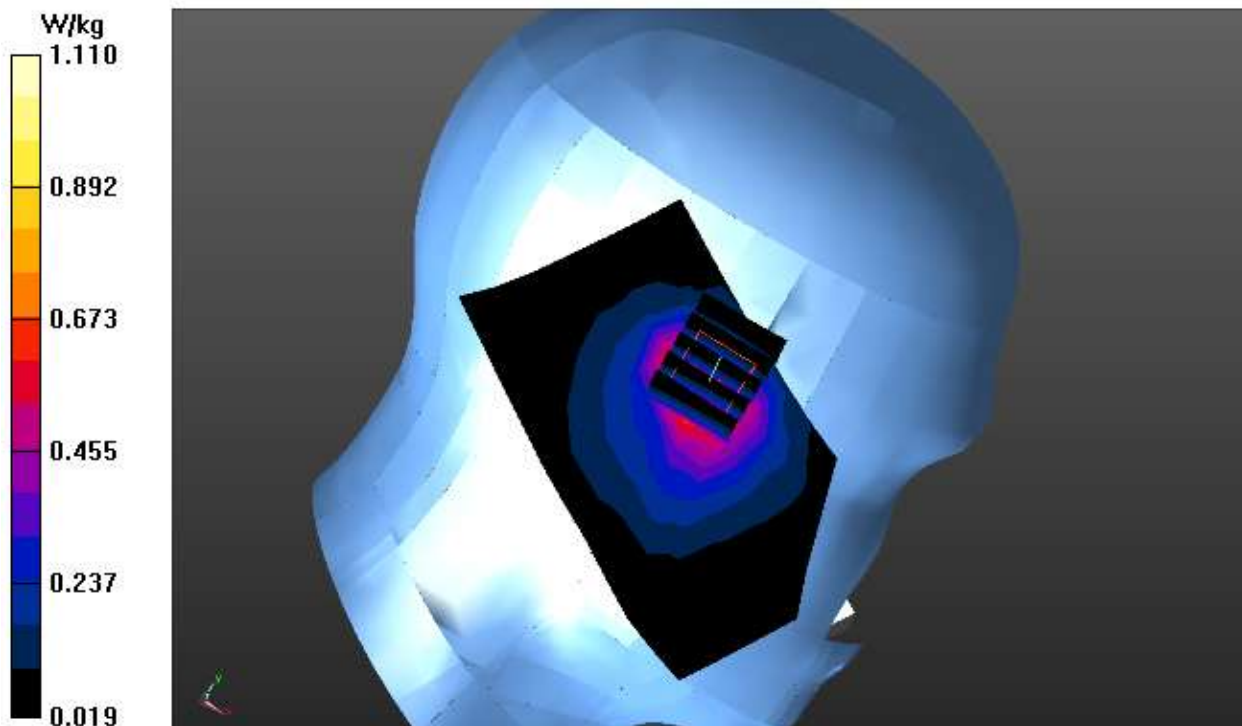
Communication System: GPRS-2 Slot; Communication System Band: PCS 1900 (1850.2 – 1909.8 MHz); Duty Cycle: 1:4.2; Frequency: 1880 MHz; Medium parameters used: $f = 1900$ MHz; $\sigma = 1.40$ mho/m; $\epsilon_r = 40.92$; $\rho = 1000$ kg/m³ ;
Phantom section: Left Section
Ambient temperature (°C): 22.7, Liquid temperature (°C): 22.4

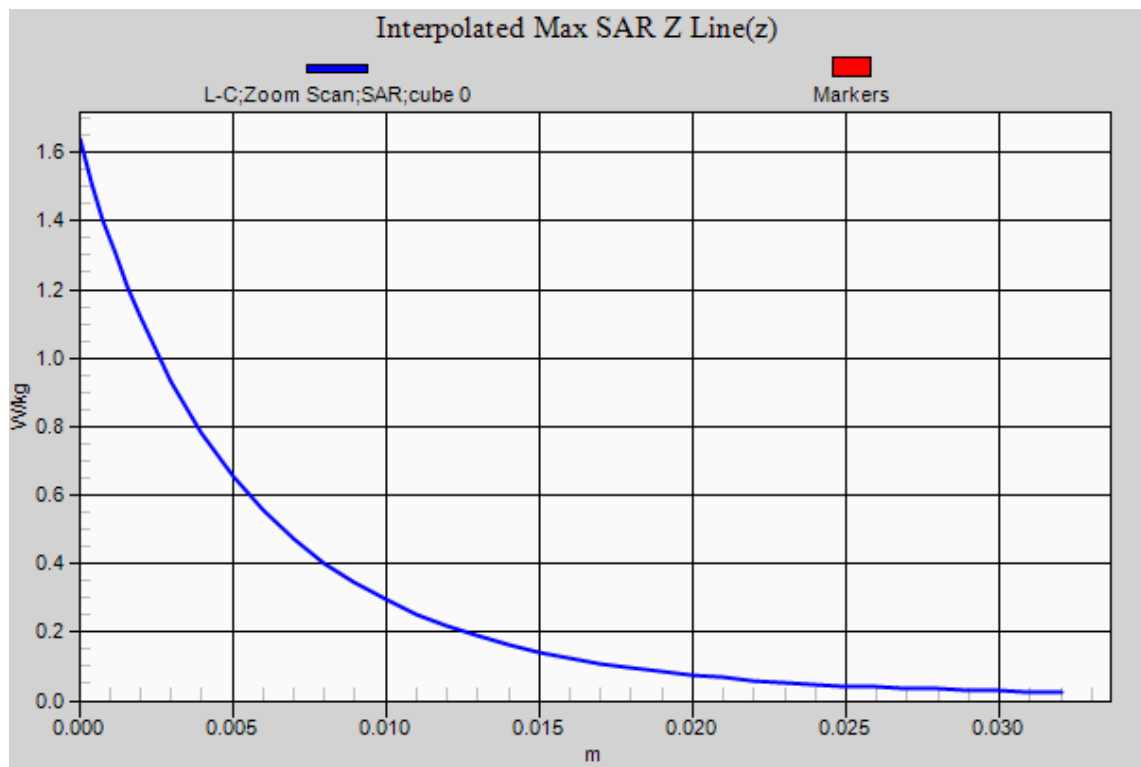
DASY Configuration:

- Probe: EX3DV4 - SN3953; ConvF(7.89, 7.89, 7.89); Calibrated: 11/06/2014;
- Sensor-Surface: 2mm (Mechanical Surface Detection), $z = 1.0, 31.0$
- Electronics: DAE4 Sn1398; Calibrated: 03/11/2015
- Phantom: SAM (20deg probe tilt) with CRP v5.0; Type: QD000P40CD;
- DASY52 52.8.7(1137); SEMCAD X 14.6.10(7164)

LEFT HEAD//2ST-L-C /Area Scan (7x11x1): Measurement grid: $dx=15$ mm, $dy=15$ mm
Maximum value of SAR (measured) = 0.839 W/kg

LEFT HEAD//2ST-L-C /Zoom Scan (5x5x7)/Cube 0: Measurement grid: $dx=8$ mm, $dy=8$ mm, $dz=5$ mm
Reference Value = 13.171 V/m; Power Drift = 0.17 dB
Peak SAR (extrapolated) = 1.64 W/kg
SAR(1 g) = 0.707 W/kg; SAR(10 g) = 0.338 W/kg
Maximum value of SAR (measured) = 1.11 W/kg





Test Laboratory: AGC Lab
GPRS 1900 Mid-Touch-Left (2up) < SIM 2>
DUT: 3G Feature phone; Type: B30

Date: June 8, 2015

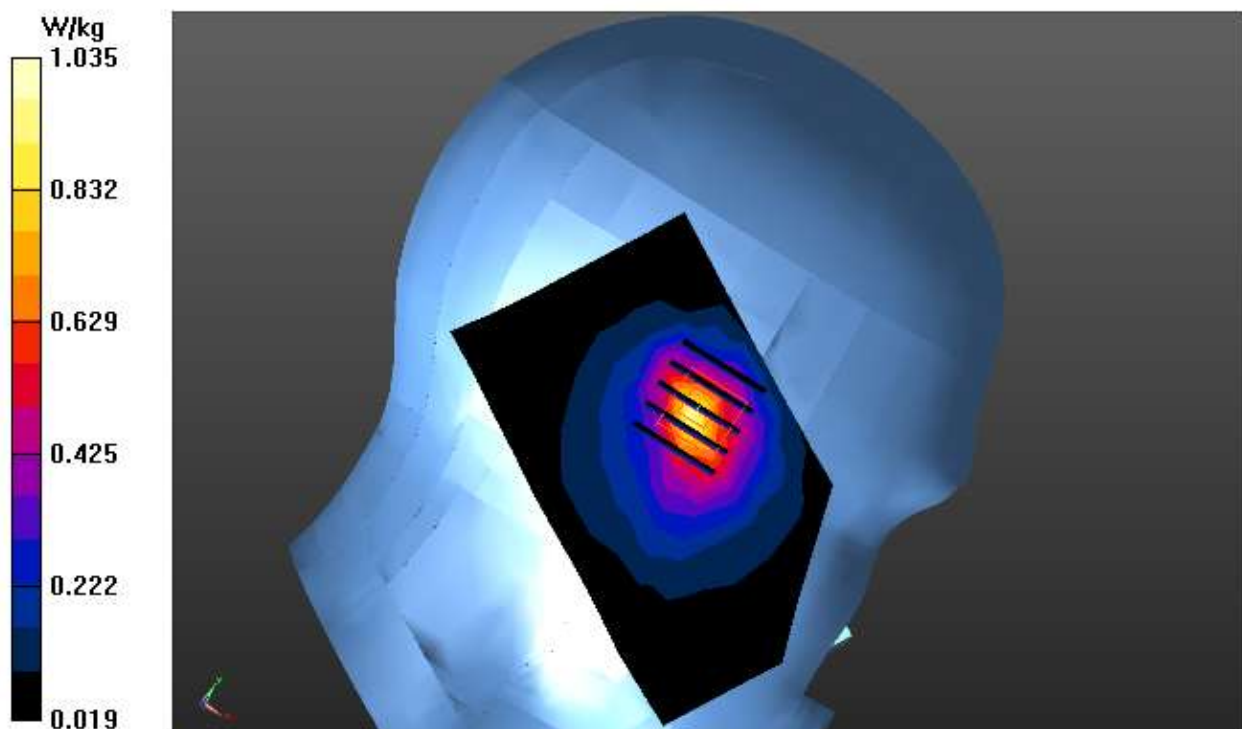
Communication System: GPRS-2 Slot; Communication System Band: PCS 1900 (1850.2 – 1909.8 MHz); Duty Cycle: 1:4.2; Frequency: 1880 MHz; Medium parameters used: $f = 1900$ MHz; $\sigma = 1.40$ mho/m; $\epsilon_r = 40.92$; $\rho = 1000$ kg/m³ ;
Phantom section: Left Section
Ambient temperature (°C): 22.7, Liquid temperature (°C): 22.4

DASY Configuration:

- Probe: EX3DV4 - SN3953; ConvF(7.89, 7.89, 7.89); Calibrated: 11/06/2014;
- Sensor-Surface: 2mm (Mechanical Surface Detection), $z = 1.0, 31.0$
- Electronics: DAE4 Sn1398; Calibrated: 03/11/2015
- Phantom: SAM (20deg probe tilt) with CRP v5.0; Type: QD000P40CD;
- DASY52 52.8.7(1137); SEMCAD X 14.6.10(7164)

LEFT HEAD/2ST-L-C 2 /Area Scan (7x11x1): Measurement grid: $dx=15$ mm, $dy=15$ mm
Maximum value of SAR (measured) = 0.993 W/kg

LEFT HEAD/2ST-L-C 2/Zoom Scan (5x5x7)/Cube 0: Measurement grid: $dx=8$ mm, $dy=8$ mm, $dz=5$ mm
Reference Value = 13.098 V/m; Power Drift = 0.14 dB
Peak SAR (extrapolated) = 1.49 W/kg
SAR(1 g) = 0.671 W/kg; SAR(10 g) = 0.330 W/kg
Maximum value of SAR (measured) = 1.04 W/kg



Test Laboratory: AGC Lab
GPRS 1900 Low-Body- Back (2up) < SIM 1>
DUT: 3G Feature phone; Type: B30

Date: June 9, 2015

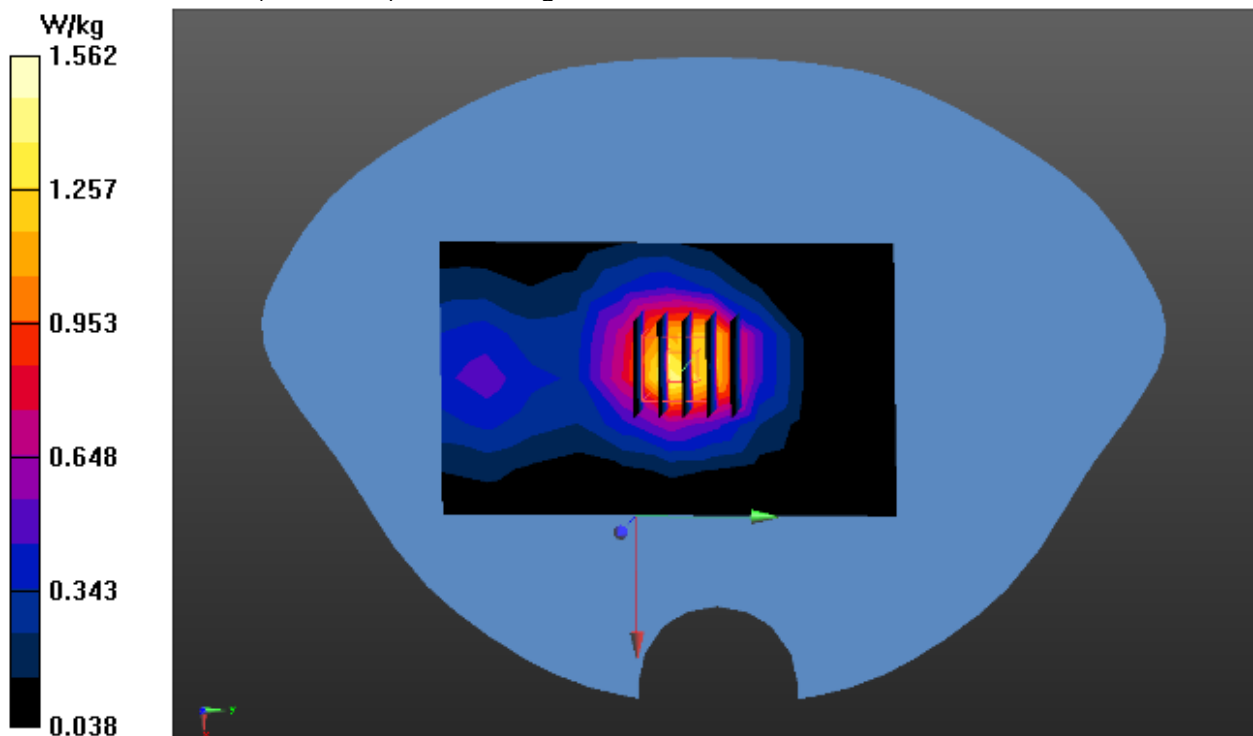
Communication System: GPRS-2 Slot; Communication System Band: PCS 1900 (1850.2 – 1909.8 MHz); Duty Cycle: 1:4.2; Frequency: 1850.2 MHz; Medium parameters used: $f = 1900$ MHz; $\sigma = 1.46$ mho/m; $\epsilon_r = 53.99$; $\rho = 1000$ kg/m³ ;
Phantom section: Flat Section
Ambient temperature (°C):22.0, Liquid temperature (°C):21.7

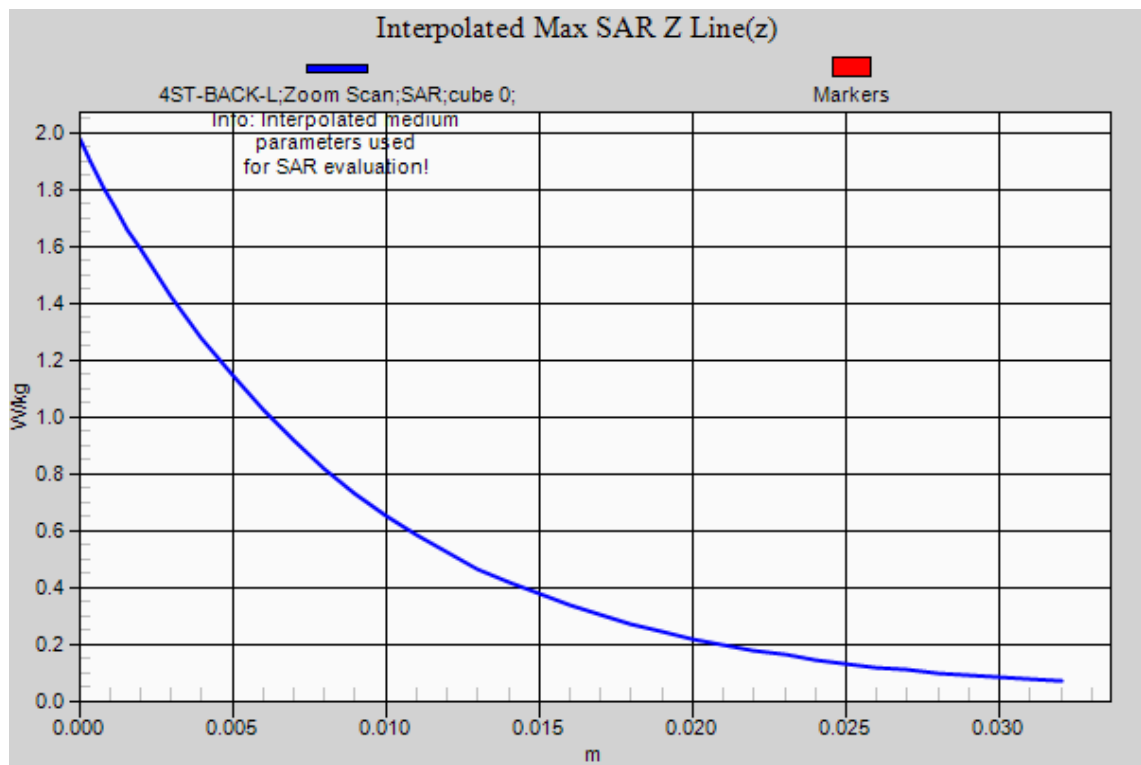
DASY Configuration:

- Probe: EX3DV4 - SN3953; ConvF(7.79,7.79,7.79); Calibrated: 11/06/2014;
- Sensor-Surface: 2mm (Mechanical Surface Detection), $z = 1.0, 31.0$
- Electronics: DAE4 Sn1398; Calibrated: 03/11/2015
- Phantom: SAM (20deg probe tilt) with CRP v5.0; Type: QD000P40CD;
- DASY52 52.8.7(1137); SEMCAD X 14.6.10(7164)

BODY/2ST-BACK-L/Area Scan (7x11x1): Measurement grid: $dx=15$ mm, $dy=15$ mm
Maximum value of SAR (measured) = 1.44 W/kg

BODY/2ST-BACK-L/Zoom Scan (5x5x7)/Cube 0: Measurement grid: $dx=8$ mm, $dy=8$ mm, $dz=5$ mm
Reference Value = 28.739 V/m; Power Drift = 0.05 dB
Peak SAR (extrapolated) = 1.98 W/kg
SAR(1 g) = 1.16 W/kg; SAR(10 g) = 0.654 W/kg
Maximum value of SAR (measured) = 1.56 W/kg





Test Laboratory: AGC Lab
GPRS 1900 Low-Body- Back (2up) < SIM 2>
DUT: 3G Feature phone; Type: B30

Date: June 9, 2015

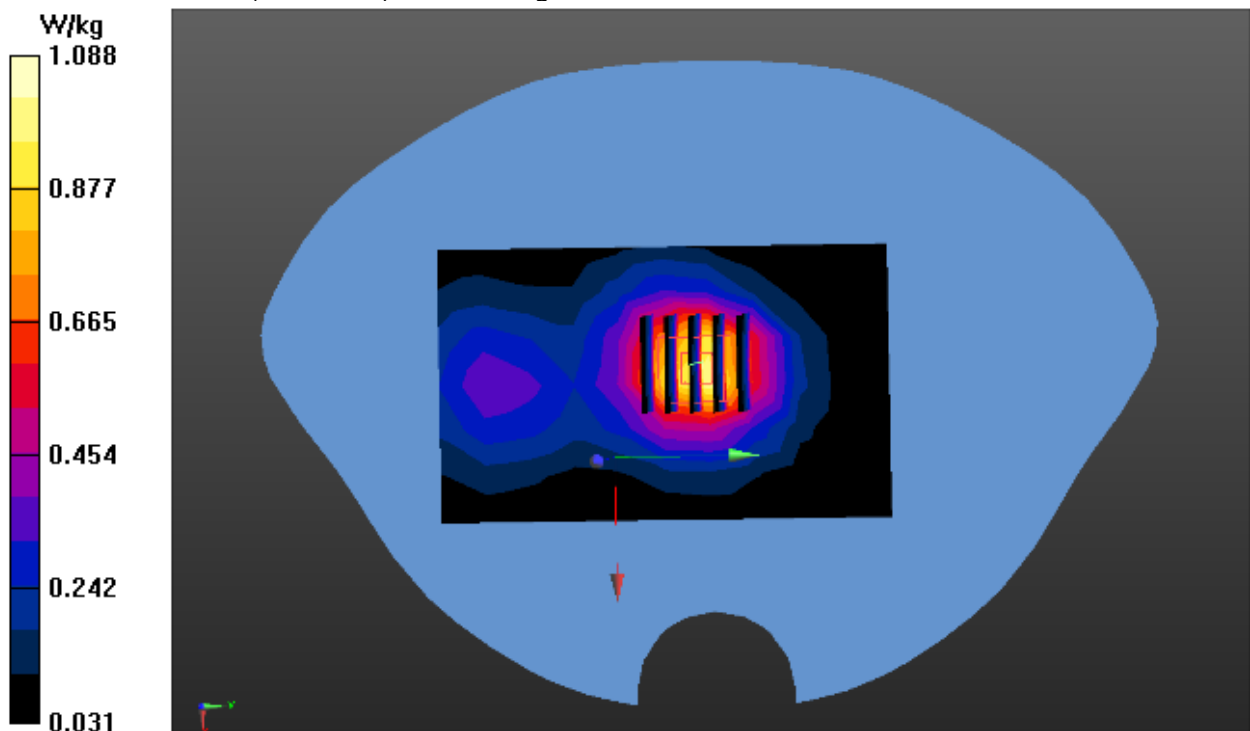
Communication System: GPRS-2 Slot; Communication System Band: PCS 1900 (1850.2 – 1909.8 MHz); Duty Cycle: 1:4.2; Frequency: 1850.2 MHz; Medium parameters used: $f = 1900$ MHz; $\sigma = 1.46$ mho/m; $\epsilon_r = 53.99$; $\rho = 1000$ kg/m³ ;
Phantom section: Flat Section
Ambient temperature (°C):22.0, Liquid temperature (°C):21.7

DASY Configuration:

- Probe: EX3DV4 - SN3953; ConvF(7.79,7.79,7.79); Calibrated: 11/06/2014;
- Sensor-Surface: 2mm (Mechanical Surface Detection), $z = 1.0, 31.0$
- Electronics: DAE4 Sn1398; Calibrated: 03/11/2015
- Phantom: SAM (20deg probe tilt) with CRP v5.0; Type: QD000P40CD;
- DASY52 52.8.7(1137); SEMCAD X 14.6.10(7164)

BODY/2ST-BACK 2/Area Scan (7x11x1): Measurement grid: $dx=15$ mm, $dy=15$ mm
Maximum value of SAR (measured) = 1.02 W/kg

BODY/2ST-BACK 2/Zoom Scan (5x5x7)/Cube 0: Measurement grid: $dx=8$ mm, $dy=8$ mm, $dz=5$ mm
Reference Value = 26.404 V/m; Power Drift = 0.03 dB
Peak SAR (extrapolated) = 1.36 W/kg
SAR(1 g) = 0.810 W/kg; SAR(10 g) = 0.465 W/kg
Maximum value of SAR (measured) = 1.09 W/kg



Test Laboratory: AGC Lab
WCDMA Band II Low -Touch-Left
DUT: 3G Feature phone; Type: B30

Date: June 8, 2015

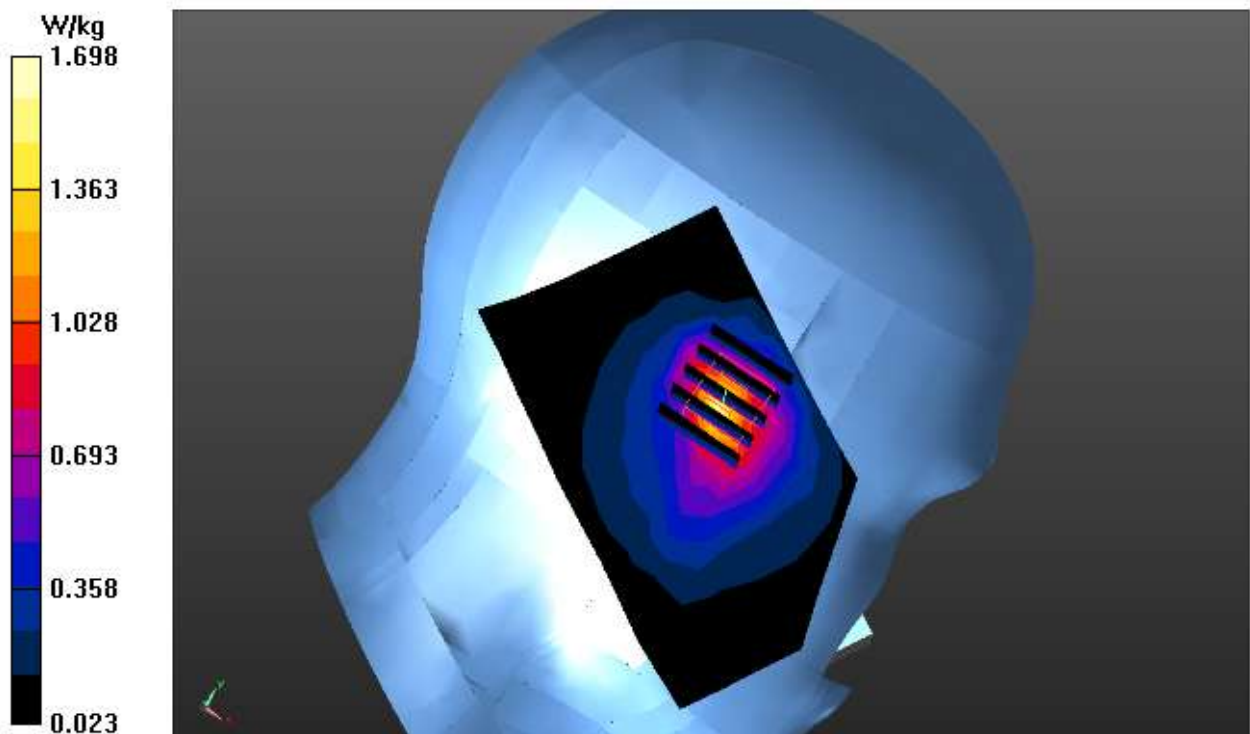
Communication System: UID 0, WCDMA 1900 (0); Communication System Band: Band II UTRA/FDD ;
Duty Cycle:1:1; Frequency: 1852.4 MHz; Medium parameters used: $f = 1900$ MHz; $\sigma = 1.36$ mho/m; $\epsilon_r = 41.00$;
 $\rho = 1000$ kg/m³ ;
Phantom section: Left Section
Ambient temperature (°C): 22.7, Liquid temperature (°C): 22.4

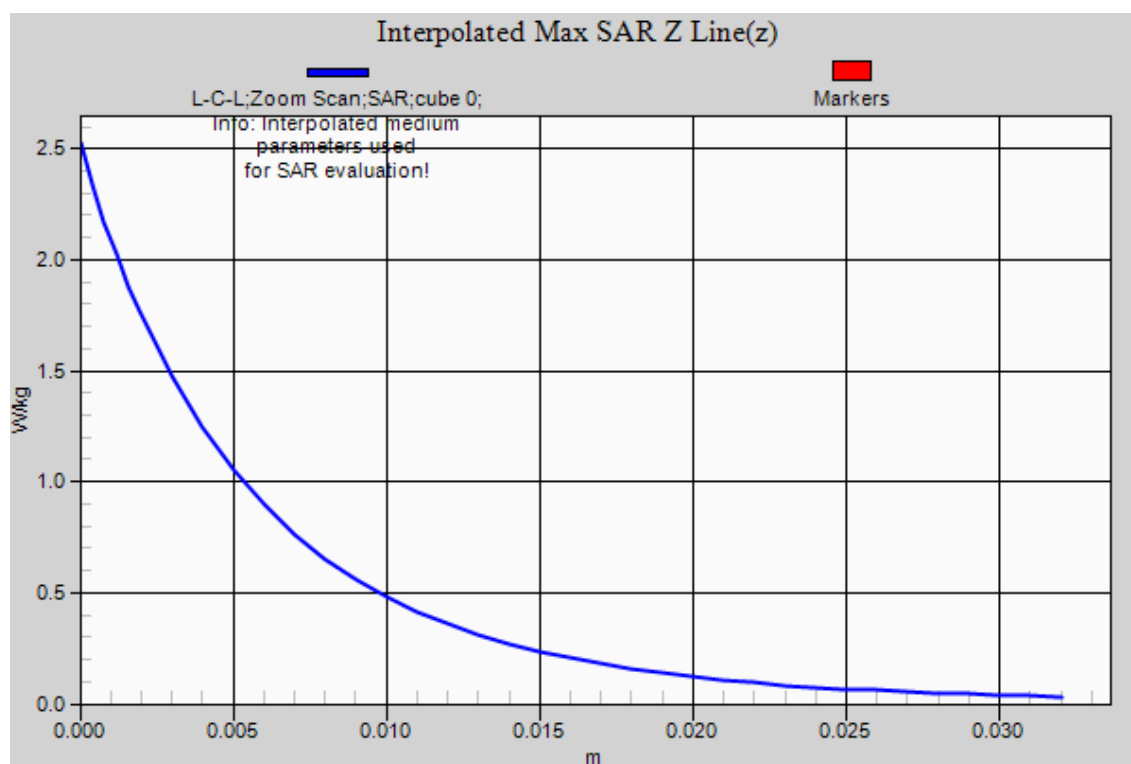
DASY Configuration:

- Probe: EX3DV4 - SN3953; ConvF(7.89, 7.89, 7.89); Calibrated: 11/06/2014;
- Sensor-Surface: 2mm (Mechanical Surface Detection), $z = 1.0, 31.0$
- Electronics: DAE4 Sn1398; Calibrated: 03/11/2015
- Phantom: SAM (20deg probe tilt) with CRP v5.0; Type: QD000P40CD;
- DASY52 52.8.7(1137); SEMCAD X 14.6.10(7164)

LEFT HEAD/L-C-L/Area Scan (7x11x1): Measurement grid: $dx=15$ mm, $dy=15$ mm
Maximum value of SAR (measured) = 1.61 W/kg

LEFT HEAD/L-C-L/Zoom Scan (5x5x7)/Cube 0: Measurement grid: $dx=8$ mm, $dy=8$ mm, $dz=5$ mm
Reference Value = 16.999 V/m; Power Drift = 0.15 dB
Peak SAR (extrapolated) = 2.53 W/kg
SAR(1 g) = 1.12 W/kg; SAR(10 g) = 0.540 W/kg
Maximum value of SAR (measured) = 1.70 W/kg





Test Laboratory: AGC Lab
WCDMA Band II Low -Body-Towards Grounds
DUT: 3G Feature phone; Type: B30

Date: June 9, 2015

Communication System: UID 0, WCDMA 1900 (0); Communication System Band: Band II UTRA/FDD ;
Duty Cycle:1:1; Frequency: 1852.4 MHz; Medium parameters used: $f = 1900$ MHz; $\sigma = 1.47$ mho/m; $\epsilon_r = 53.62$;
 $\rho = 1000$ kg/m³ ;
Phantom section: Flat Section
Ambient temperature (°C):22.0, Liquid temperature (°C):21.7

DASY Configuration:

- Probe: EX3DV4 - SN3953; ConvF(7.79,7.79,7.79); Calibrated: 11/06/2014;
- Sensor-Surface: 2mm (Mechanical Surface Detection), $z = 1.0, 31.0$
- Electronics: DAE4 Sn1398; Calibrated: 03/11/2015
- Phantom: SAM (20deg probe tilt) with CRP v5.0; Type: QD000P40CD;
- DASY52 52.8.7(1137); SEMCAD X 14.6.10(7164)

BODY/BACK-L/Area Scan (7x11x1): Measurement grid: $dx=15$ mm, $dy=15$ mm
Maximum value of SAR (measured) = 1.29 W/kg

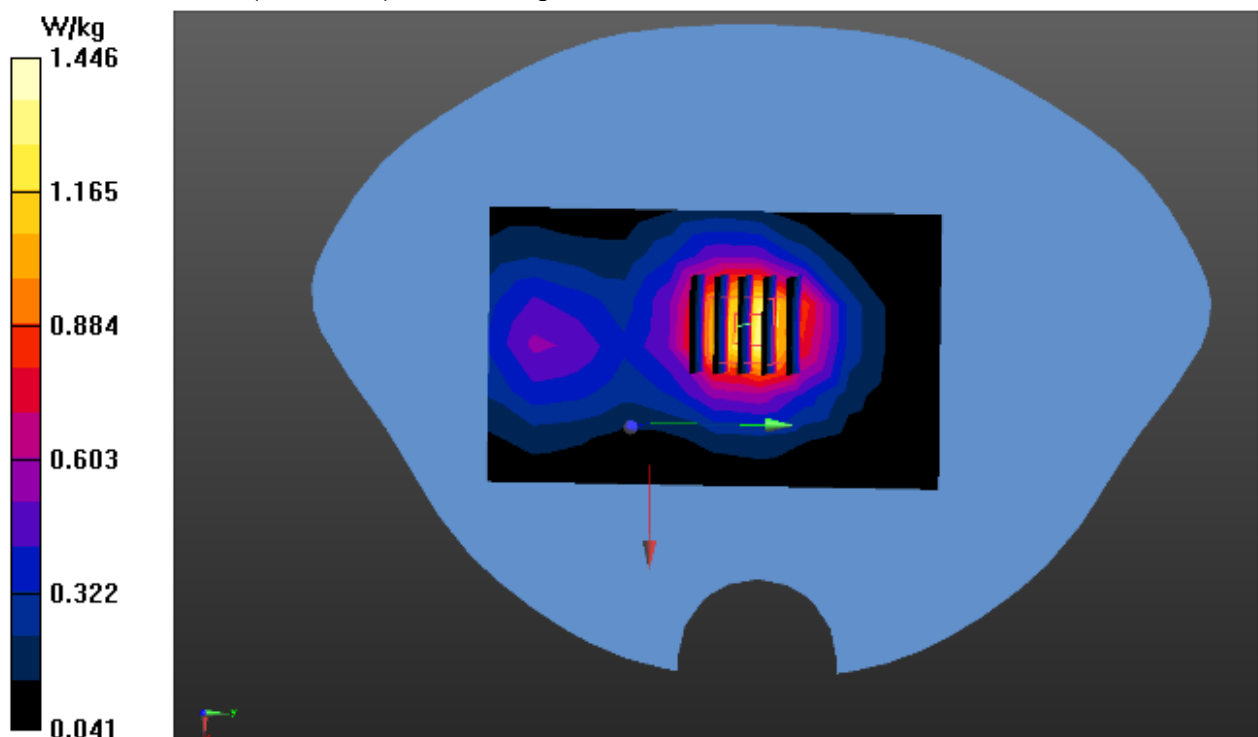
BODY/BACK-L/Zoom Scan (5x5x7)/Cube 0: Measurement grid: $dx=8$ mm, $dy=8$ mm, $dz=5$ mm

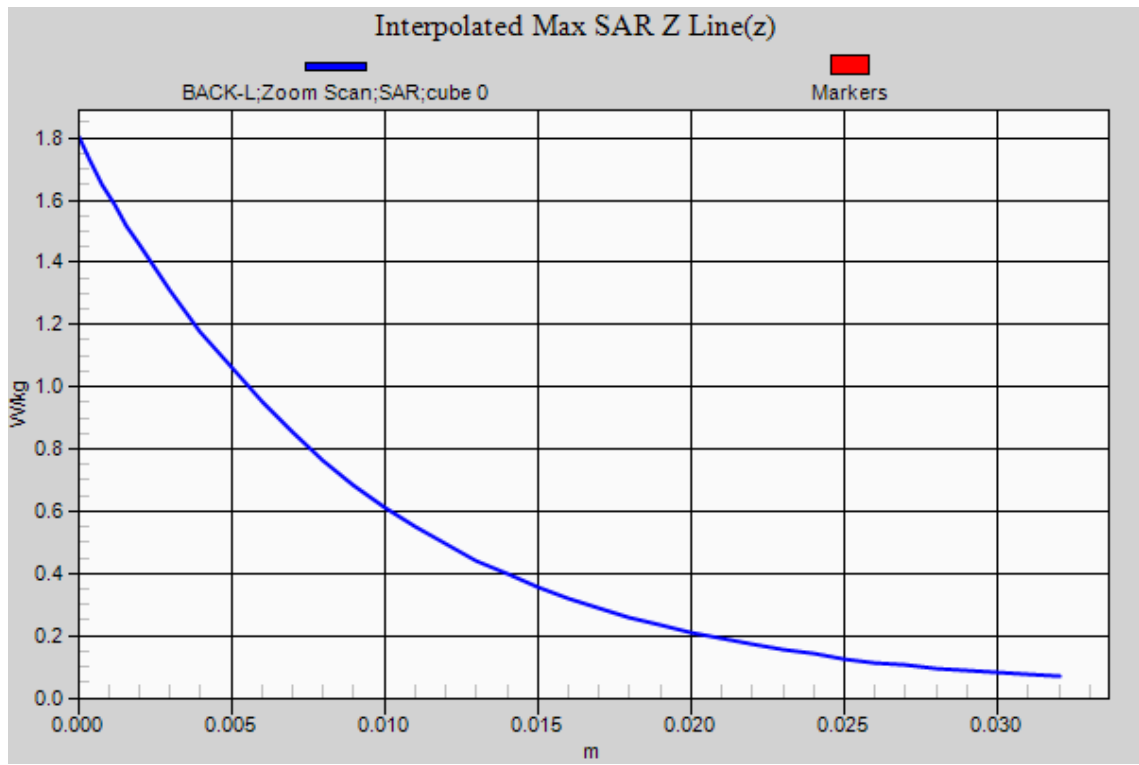
Reference Value = 29.882 V/m; Power Drift = -0.02 dB

Peak SAR (extrapolated) = 1.80 W/kg

SAR(1 g) = 1.08 W/kg; SAR(10 g) = 0.622 W/kg

Maximum value of SAR (measured) = 1.45 W/kg





Test Laboratory: AGC Lab

Date: June 3, 2015

WCDMA Band V Mid- Touch-Right

DUT: 3G Feature phone; Type: B30

Communication System: UID 0, WCDMA 850 (0); Communication System Band: BAND V UTRA/FDD;
Duty Cycle:1:1; Frequency: 836.6 MHz; Medium parameters used: $f = 835$ MHz; $\sigma = 0.91$ mho/m; $\epsilon_r = 41.85$
 $\rho = 1000$ kg/m³ ;
Phantom section: Right Section
Ambient temperature (°C): 21.9, Liquid temperature (°C): 21.5

DASY Configuration:

- Probe: EX3DV4 - SN3953; ConvF(10.12, 10.12, 10.12); Calibrated:11/06/2014;
- Sensor-Surface: 2mm (Mechanical Surface Detection), $z = 1.0, 31.0$
- Electronics: DAE4 Sn1398; Calibrated: 03/11/2015
- Phantom: SAM (20deg probe tilt) with CRP v5.0; Type: QD000P40CD;
- DASY52 52.8.7(1137); SEMCAD X 14.6.10(7164)

RIGHT HEAD/R-C/Area Scan (7x11x1): Measurement grid: $dx=15$ mm, $dy=15$ mm

Maximum value of SAR (measured) = 0.580 W/kg

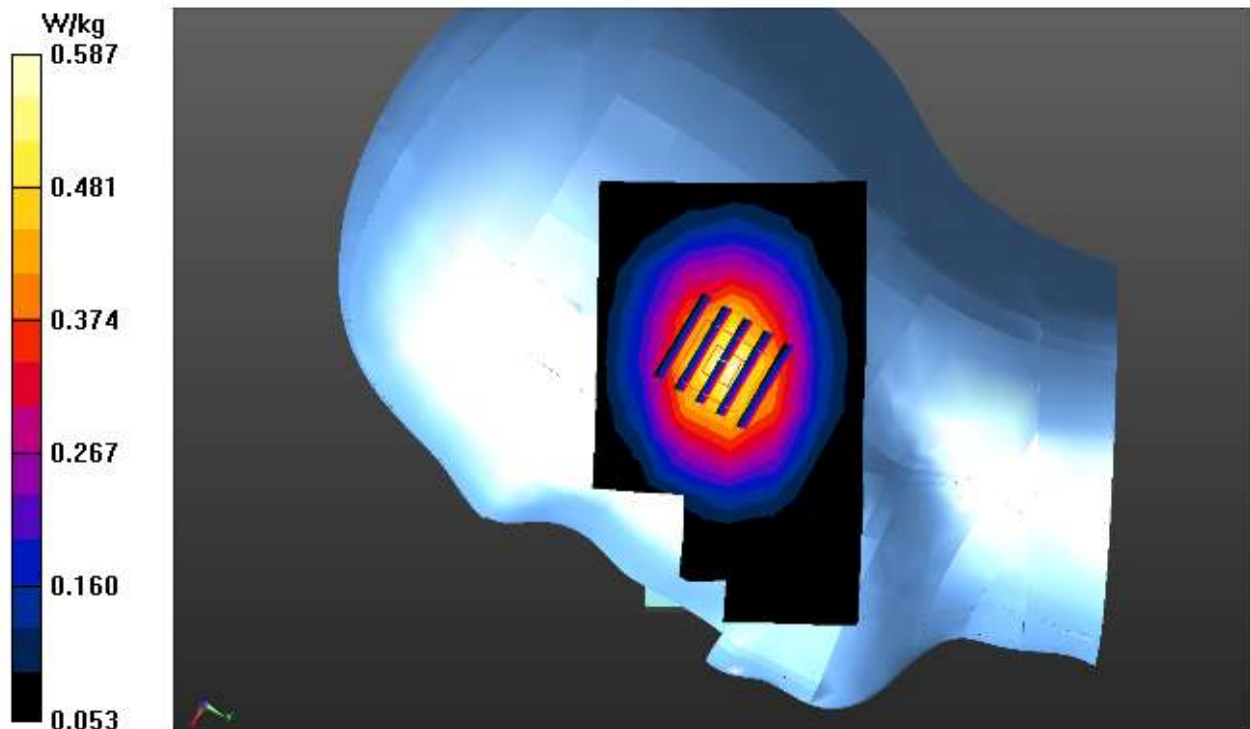
RIGHT HEAD/R-C/Zoom Scan (5x5x7)/Cube 0: Measurement grid: $dx=8$ mm, $dy=8$ mm, $dz=5$ mm

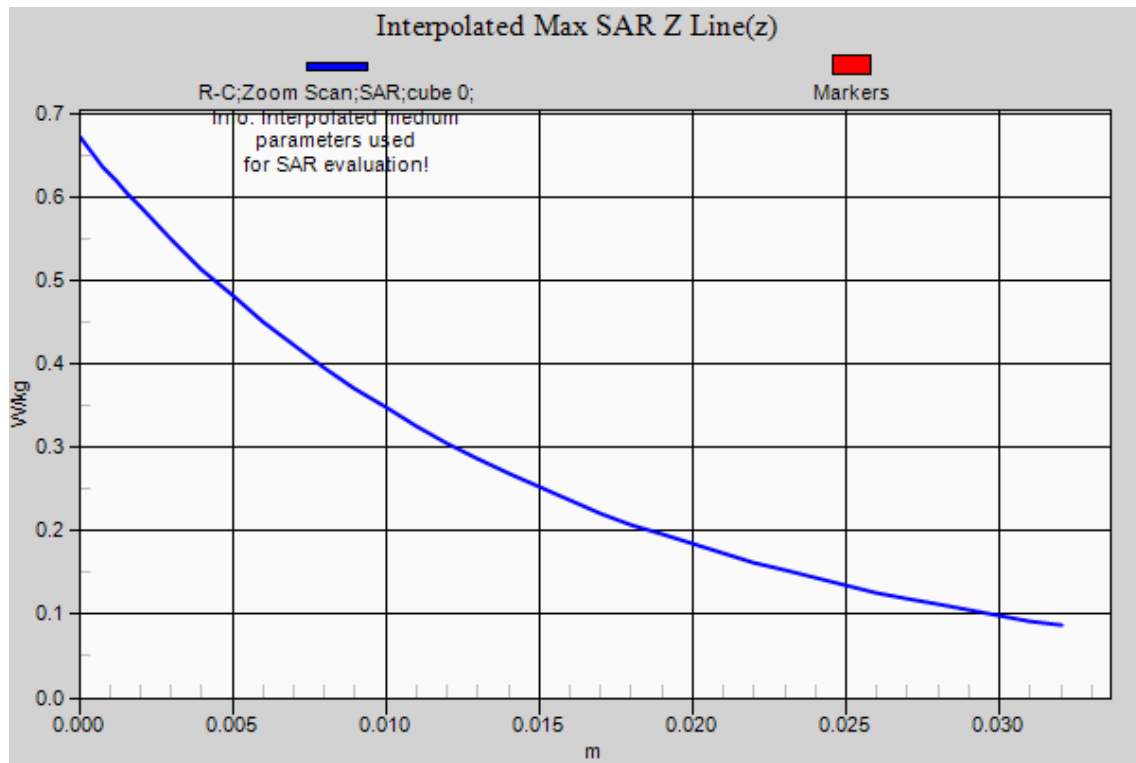
Reference Value = 19.543 V/m; Power Drift = -0.01 dB

Peak SAR (extrapolated) = 0.673 W/kg

SAR(1 g) = 0.486 W/kg; SAR(10 g) = 0.338 W/kg

Maximum value of SAR (measured) = 0.587 W/kg





WCDMA Band V High-Body-Towards Grounds

Date: June 4, 2015

DUT: 3G Feature phone; Type: B30

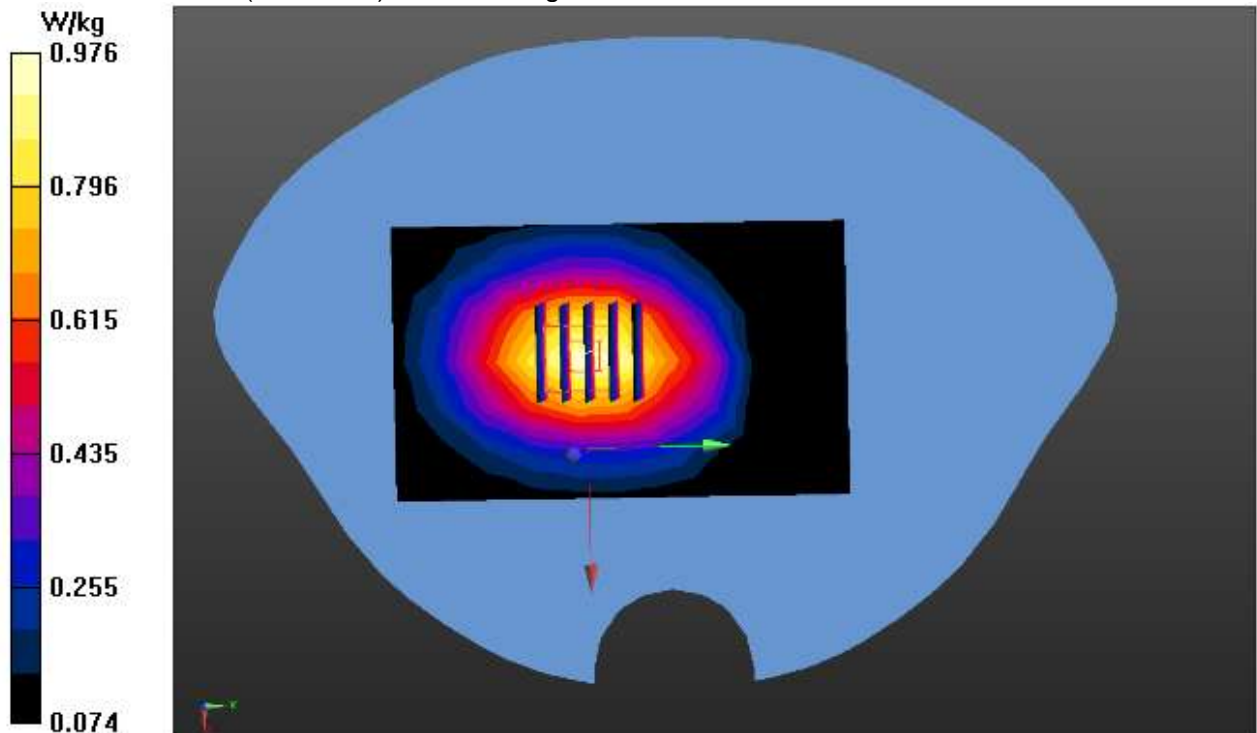
Communication System: UID 0, WCDMA 850 (0); Communication System Band: BAND V UTRA/FDD;
Duty Cycle:1:1; Frequency: 846.6 MHz; Medium parameters used: $f = 835$ MHz; $\sigma = 0.98$ mho/m; $\epsilon_r = 54.72$;
 $\rho = 1000$ kg/m³ ;
Phantom section: Flat Section
Ambient temperature (°C): 22.5, Liquid temperature (°C): 22.0

DASY Configuration:

- Probe: EX3DV4 - SN3953; ConvF(10.08,10.08, 10.08); Calibrated: 11/06/2014;
- Sensor-Surface: 2mm (Mechanical Surface Detection), $z = 1.0, 31.0$
- Electronics: DAE4 Sn1398; Calibrated: 03/11/2015
- Phantom: SAM (20deg probe tilt) with CRP v5.0; Type: QD000P40CD;
- DASY52 52.8.7(1137); SEMCAD X 14.6.10(7164)

BODY/BACK-H/Area Scan (7x11x1): Measurement grid: $dx=15$ mm, $dy=15$ mm
Maximum value of SAR (measured) = 0.965 W/kg

BODY/BACK-H/Zoom Scan (5x5x7)/Cube 0: Measurement grid: $dx=8$ mm, $dy=8$ mm, $dz=5$ mm
Reference Value = 28.510 V/m; Power Drift = 0.04 dB
Peak SAR (extrapolated) = 1.13 W/kg
SAR(1 g) = 0.807 W/kg; SAR(10 g) = 0.558 W/kg
Maximum value of SAR (measured) = 0.976 W/kg



Repeated SAR

Test Laboratory: AGC Lab

Date: June 4, 2015

GPRS 850 High- Body- Back (2up) < SIM 1>

DUT: 3G Feature phone; Type: B30

Communication System: GPRS-2 Slot; Communication System Band: GSM 850 (824.2 – 848.8 MHz); Duty Cycle:1:4.2;Frequency: 848.8MHz; Medium parameters used: $f = 835$ MHz; $\sigma = 0.99$ mho/m; $\epsilon_r = 54.53$; $\rho = 1000$ kg/m³ ;

Phantom section: Flat Section

Ambient temperature (°C): 22.5, Liquid temperature (°C): 22.0

DASY Configuration:

- Probe: EX3DV4 - SN3953; ConvF(10.08,10.08, 10.08); Calibrated: 11/06/2014;
- Sensor-Surface: 2mm (Mechanical Surface Detection), $z = 1.0, 31.0$
- Electronics: DAE4 Sn1398; Calibrated: 03/11/2015
- Phantom: SAM (20deg probe tilt) with CRP v5.0; Type: QDOVA002AA;
- DASY52 52.8.7(1137); SEMCAD X 14.6.10(7164)

BODY/REPEATED-2ST-BACK-H/Area Scan (7x11x1): Measurement grid: $dx=15$ mm, $dy=15$ mm

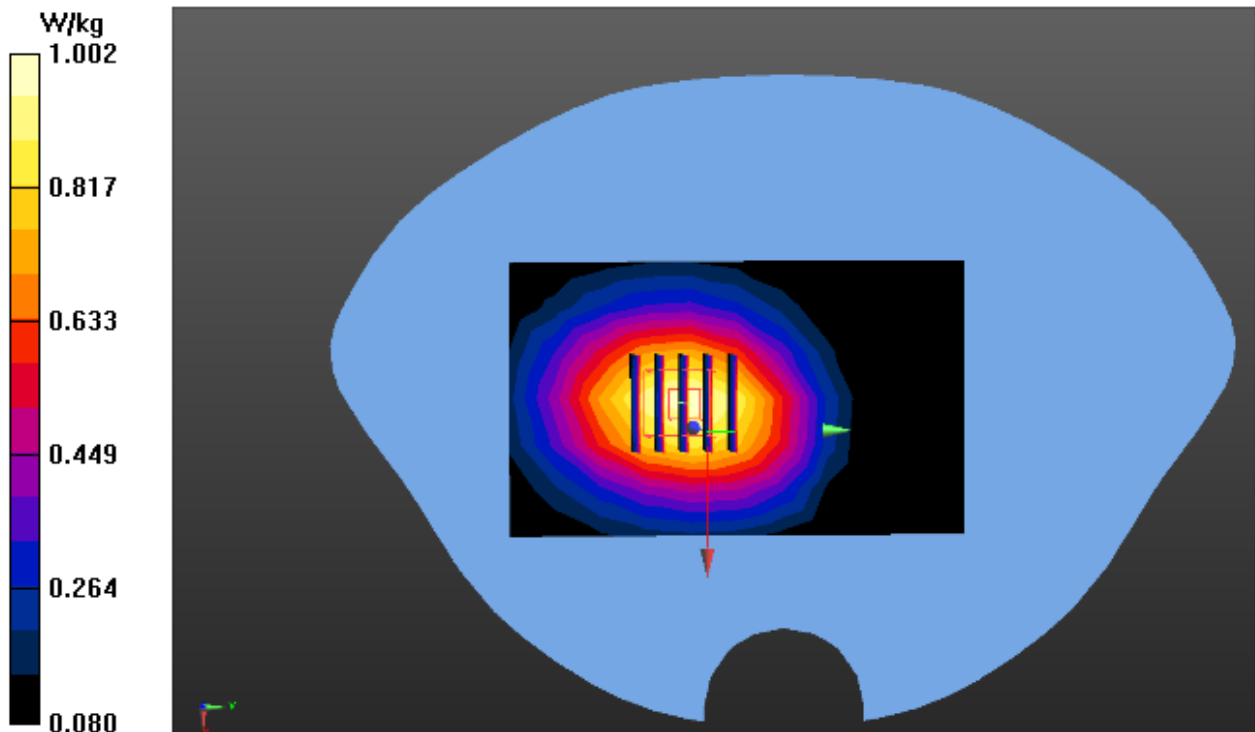
Maximum value of SAR (measured) = 1.00 W/kg

BODY/REPEATED-2ST-BACK-H/Zoom Scan (5x5x7)/Cube 0: Measurement grid: $dx=8$ mm, $dy=8$ mm, $dz=5$ mm

Reference Value = 25.226 V/m; Power Drift = -0.02 dB

Peak SAR (extrapolated) = 1.15 W/kg

SAR(1 g) = 0.820 W/kg; SAR(10 g) = 0.563 W/kg



Test Laboratory: AGC Lab
GPRS 1900 Low-Body- Back (2up) < SIM 1>
DUT: 3G Feature phone; Type: B30

Date: June 9, 2015

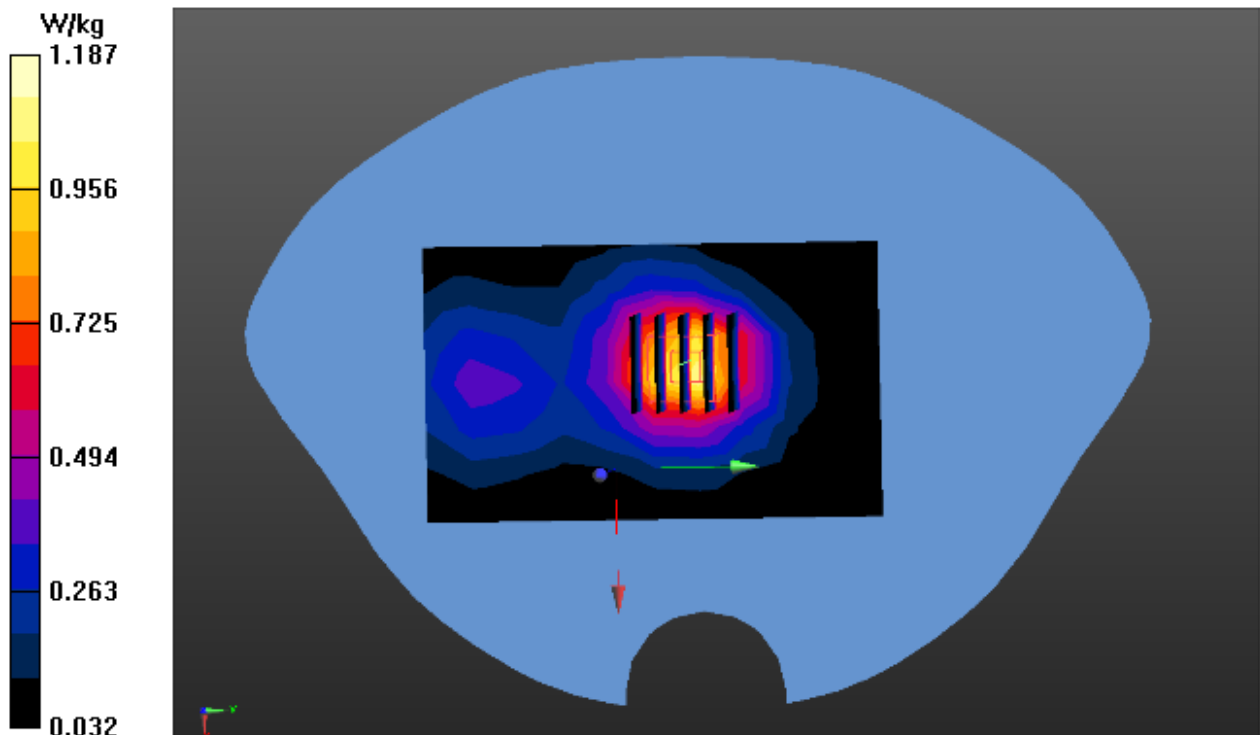
Communication System: GPRS-2 Slot; Communication System Band: PCS 1900 (1850.2 – 1909.8 MHz); Duty Cycle: 1:4.2; Frequency: 1850.2 MHz; Medium parameters used: $f = 1900$ MHz; $\sigma = 1.46$ mho/m; $\epsilon_r = 53.99$; $\rho = 1000$ kg/m³ ;
Phantom section: Flat Section
Ambient temperature (°C):22.0, Liquid temperature (°C):21.7

DASY Configuration:

- Probe: EX3DV4 - SN3953; ConvF(7.79,7.79,7.79); Calibrated: 11/06/2014;
- Sensor-Surface: 2mm (Mechanical Surface Detection), $z = 1.0, 31.0$
- Electronics: DAE4 Sn1398; Calibrated: 03/11/2015
- Phantom: SAM (20deg probe tilt) with CRP v5.0; Type: QD000P40CD;
- DASY52 52.8.7(1137); SEMCAD X 14.6.10(7164)

BODY/REPEATED-2ST-BACK/Area Scan (7x11x1): Measurement grid: $dx=15$ mm, $dy=15$ mm
Maximum value of SAR (measured) = 1.09 W/kg

BODY/REPEATED-2ST-BACK/Zoom Scan (5x5x7)/Cube 0: Measurement grid: $dx=8$ mm, $dy=8$ mm, $dz=5$ mm
Reference Value = 27.388 V/m; Power Drift =0.07dB
Peak SAR (extrapolated) = 1.49 W/kg
SAR(1 g) = 0.879 W/kg; SAR(10 g) = 0.501 W/kg
Maximum value of SAR (measured) = 1.19 W/kg



WCDMA Band V High-Body-Towards Grounds
DUT: 3G Feature phone; Type: B30

Date: June 4, 2015

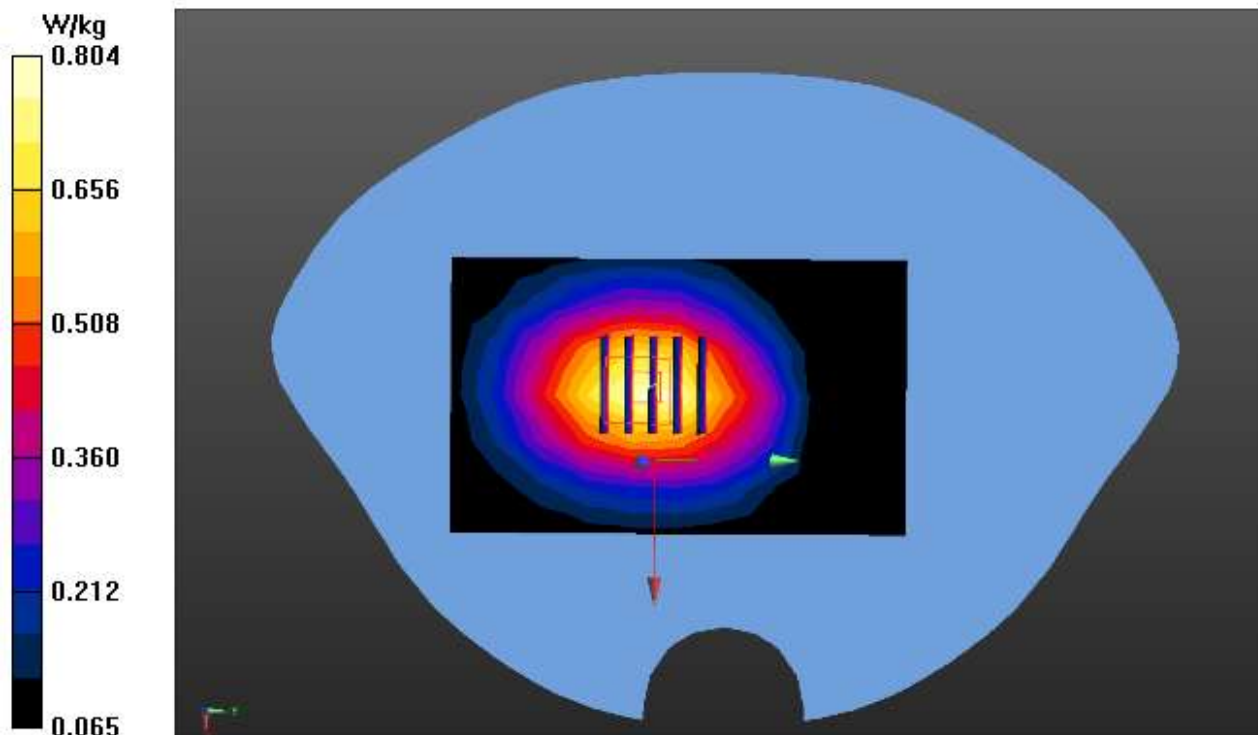
Communication System: UID 0, WCDMA 850 (0); Communication System Band: BAND V UTRA/FDD;
Duty Cycle:1:1; Frequency: 846.6 MHz; Medium parameters used: $f = 835$ MHz; $\sigma = 0.98$ mho/m; $\epsilon_r = 54.72$;
 $\rho = 1000$ kg/m³ ;
Phantom section: Flat Section
Ambient temperature (°C): 22.5, Liquid temperature (°C): 22.0

DASY Configuration:

- Probe: EX3DV4 - SN3953; ConvF(10.08,10.08, 10.08); Calibrated: 11/06/2014;
- Sensor-Surface: 2mm (Mechanical Surface Detection), $z = 1.0, 31.0$
- Electronics: DAE4 Sn1398; Calibrated: 03/11/2015
- Phantom: SAM (20deg probe tilt) with CRP v5.0; Type: QD000P40CD;
- DASY52 52.8.7(1137); SEMCAD X 14.6.10(7164)

BODY/REPEATED-BACK/Area Scan (7x11x1): Measurement grid: $dx=15$ mm, $dy=15$ mm
Maximum value of SAR (measured) = 0.787 W/kg

BODY/REPEATED-BACK/Zoom Scan (5x5x7)/Cube 0: Measurement grid: $dx=8$ mm, $dy=8$ mm, $dz=5$ mm
Reference Value = 26.213 V/m; Power Drift = -0.02 dB
Peak SAR (extrapolated) = 0.925 W/kg
SAR(1 g) = 0.669 W/kg; SAR(10 g) = 0.467 W/kg
Maximum value of SAR (measured) = 0.804 W/kg



Test Laboratory: AGC Lab
WCDMA Band II Low -Touch-Left
DUT: 3G Feature phone; Type: B30

Date: June 8, 2015

Communication System: UID 0, WCDMA 1900 (0); Communication System Band: Band II UTRA/FDD ;
Duty Cycle:1:1; Frequency: 1852.4 MHz; Medium parameters used: $f = 1900$ MHz; $\sigma = 1.36$ mho/m; $\epsilon_r = 41.00$;
 $\rho = 1000$ kg/m³ ;
Phantom section: Left Section
Ambient temperature (°C): 22.7, Liquid temperature (°C): 22.4

DASY Configuration:

- Probe: EX3DV4 - SN3953; ConvF(7.89, 7.89, 7.89); Calibrated: 11/06/2014;
- Sensor-Surface: 2mm (Mechanical Surface Detection), $z = 1.0, 31.0$
- Electronics: DAE4 Sn1398; Calibrated: 03/11/2015
- Phantom: SAM (20deg probe tilt) with CRP v5.0; Type: QD000P40CD;
- DASY52 52.8.7(1137); SEMCAD X 14.6.10(7164)

LEFT HEAD/REPEATED-L-C-L/Area Scan (7x11x1): Measurement grid: $dx=15$ mm, $dy=15$ mm
Maximum value of SAR (measured) = 1.38 W/kg

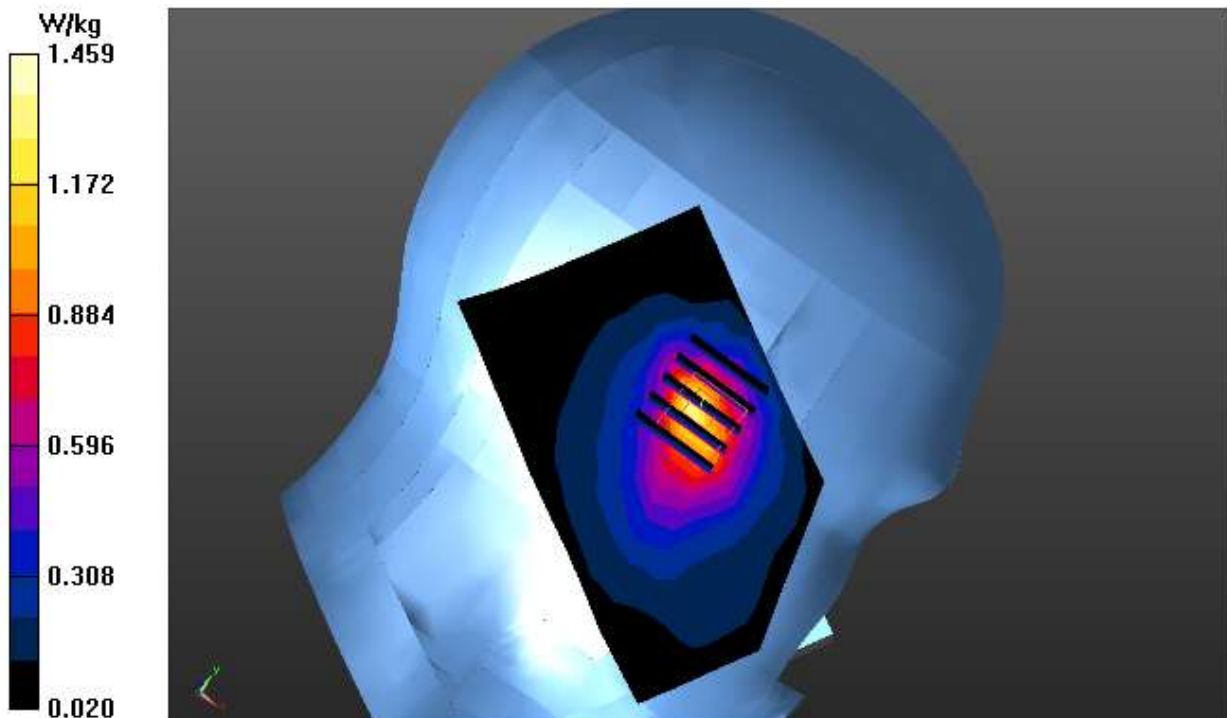
LEFT HEAD/REPEATED-L-C-L/Zoom Scan (5x5x7)/Cube 0: Measurement grid: $dx=8$ mm, $dy=8$ mm, $dz=5$ mm

Reference Value = 14.250 V/m; Power Drift = 0.19 dB

Peak SAR (extrapolated) = 1.99 W/kg

SAR(1 g) = 0.960 W/kg; SAR(10 g) = 0.493 W/kg

Maximum value of SAR (measured) = 1.46 W/kg



Test Laboratory: AGC Lab
GPRS 1900 Mid-Touch-Left (2up) < SIM 1>
DUT: 3G Feature phone; Type: B30

Date: June 8, 2015

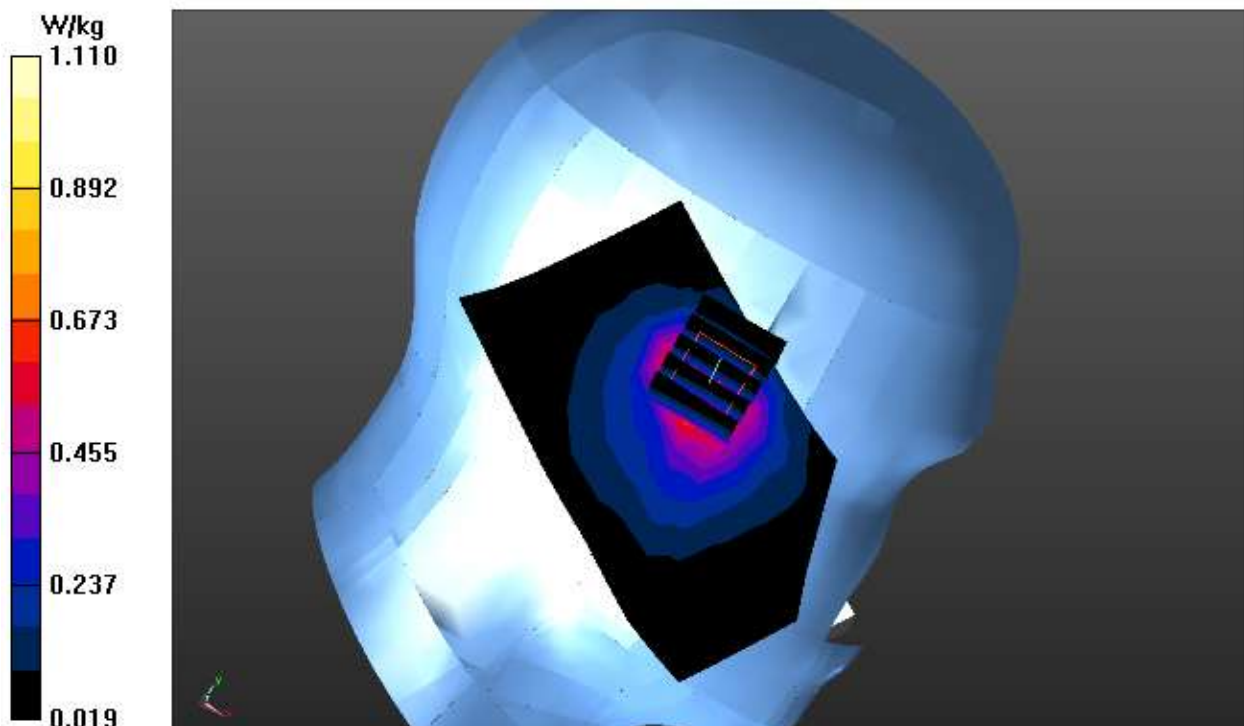
Communication System: GPRS-2 Slot; Communication System Band: PCS 1900 (1850.2 – 1909.8 MHz); Duty Cycle: 1:4.2; Frequency: 1880 MHz; Medium parameters used: $f = 1900$ MHz; $\sigma = 1.40$ mho/m; $\epsilon_r = 40.92$; $\rho = 1000$ kg/m³ ;
Phantom section: Left Section
Ambient temperature (°C): 22.7, Liquid temperature (°C): 22.4

DASY Configuration:

- Probe: EX3DV4 - SN3953; ConvF(7.89, 7.89, 7.89); Calibrated: 11/06/2014;
- Sensor-Surface: 2mm (Mechanical Surface Detection), $z = 1.0, 31.0$
- Electronics: DAE4 Sn1398; Calibrated: 03/11/2015
- Phantom: SAM (20deg probe tilt) with CRP v5.0; Type: QD000P40CD;
- DASY52 52.8.7(1137); SEMCAD X 14.6.10(7164)

LEFT HEAD//2ST-L-C /Area Scan (7x11x1): Measurement grid: $dx=15$ mm, $dy=15$ mm
Maximum value of SAR (measured) = 0.839 W/kg

LEFT HEAD//2ST-L-C /Zoom Scan (5x5x7)/Cube 0: Measurement grid: $dx=8$ mm, $dy=8$ mm, $dz=5$ mm
Reference Value = 13.171 V/m; Power Drift = -0.12 dB
Peak SAR (extrapolated) = 1.64 W/kg
SAR(1 g) = 0.700 W/kg; SAR(10 g) = 0.336 W/kg
Maximum value of SAR (measured) = 1.11 W/kg



Test Laboratory: AGC Lab
WCDMA Band II Low -Body-Towards Grounds
DUT: 3G Feature phone; Type: B30

Date: June 9, 2015

Communication System: UID 0, WCDMA 1900 (0); Communication System Band: Band II UTRA/FDD ;
Duty Cycle:1:1; Frequency: 1852.4 MHz; Medium parameters used: $f = 1900$ MHz; $\sigma = 1.47$ mho/m; $\epsilon_r = 53.62$;
 $\rho = 1000$ kg/m³ ;
Phantom section: Flat Section
Ambient temperature (°C):22.0, Liquid temperature (°C):21.7

DASY Configuration:

- Probe: EX3DV4 - SN3953; ConvF(7.79,7.79,7.79); Calibrated: 11/06/2014;
- Sensor-Surface: 2mm (Mechanical Surface Detection), $z = 1.0, 31.0$
- Electronics: DAE4 Sn1398; Calibrated: 03/11/2015
- Phantom: SAM (20deg probe tilt) with CRP v5.0; Type: QD000P40CD;
- DASY52 52.8.7(1137); SEMCAD X 14.6.10(7164)

BODY/REPEATED-BACK-L/Area Scan (7x11x1): Measurement grid: $dx=15$ mm, $dy=15$ mm

Maximum value of SAR (measured) = 1.15 W/kg

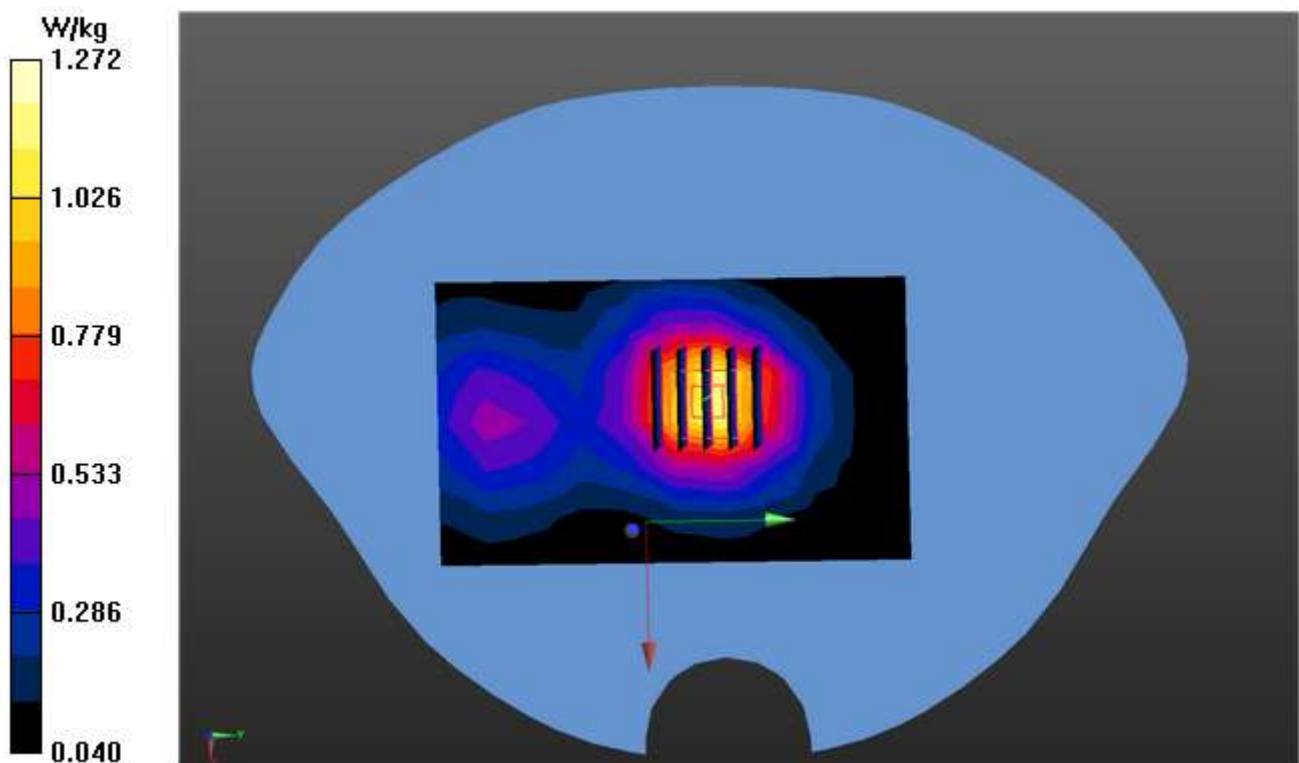
BODY/REPEATED-BACK-L/Zoom Scan (5x5x7)/Cube 0: Measurement grid: $dx=8$ mm, $dy=8$ mm, $dz=5$ mm

Reference Value = 28.077 V/m; Power Drift = 0.14 dB

Peak SAR (extrapolated) = 1.59 W/kg

SAR(1 g) = 0.956 W/kg; SAR(10 g) = 0.558 W/kg

Maximum value of SAR (measured) = 1.27 W/kg



APPENDIX C. TEST SETUP PHOTOGRAPHS & EUT PHOTOGRAPHS

Refer to Attached files.

APPENDIX D. CALIBRATION DATA

Refer to Attached files.