

folding line
2 staples here (saddle stitching)

Targus®

WIRELESS PRESENTER WITH LASER POINTER

User Guide

4103942-001B / AMP16US

1 YEAR LIMITED WARRANTY: We pride ourselves on the quality of our products. For complete warranty details and a list of our worldwide offices, please visit www.targus.com

Features and specifications are subject to change without notice. Microsoft, Windows, Windows Vista, and PowerPoint are registered trademarks or trademarks of Microsoft Corporation in the United States and/or other countries. Mac is a trademark of Apple Inc., registered in the U.S. and other countries. The "f" logo is a registered trademark of Facebook, Inc. the "Twitter Bird" is a registered trademark of Twitter, Inc. All trademarks and registered trademarks are the property of their respective owners. All rights reserved. ©2019 Targus. 1211 North Miller Street, Anaheim, CA 92806.



AMP16B FCC ID : OXM000094
AMP16BR FCC ID : OXM000095

Model # : AMP16B (Wireless Presenter)
AMP16BR (Wireless Receiver)
SKU # : AMP16US

folding line
2 staples here (saddle stitching)

Diecut
Color: Grayscale
Material: 80gsm woodfree paper

Folded Size: 4.5"W x 4.5"H

Open size: 9"W x 4.5"H

Targus Wireless Presenter with Laser Pointer

Introduction

Thank you for your purchase of the Targus Wireless Presenter with Laser Pointer. This combination presenter laser pointer features four control buttons that emulate the command keys in PowerPoint. It offers true plug-and-play capability with no need for software drivers and the long range 2.4 GHz technology allows for effective presentations up to 40 feet (12 m).

Contents

- Wireless Presenter with Laser Pointer
- Ultra-Slim Wireless Receiver
- 1 x AAA battery
- User guide

System Requirements

Hardware

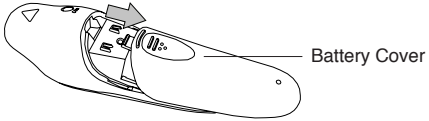
- USB interface

Operating System

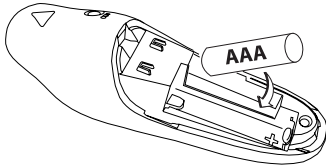
- Microsoft Windows® 7
- Microsoft Windows® 8
- Microsoft Windows® 8.1
- Microsoft Windows® 10
- Mac OS® X v10.6 -10.14.1

Setting up your Wireless Presenter and Installing the Battery

If the presenter is on, slide the on/off switch located on the side of the presenter to the "off" position.

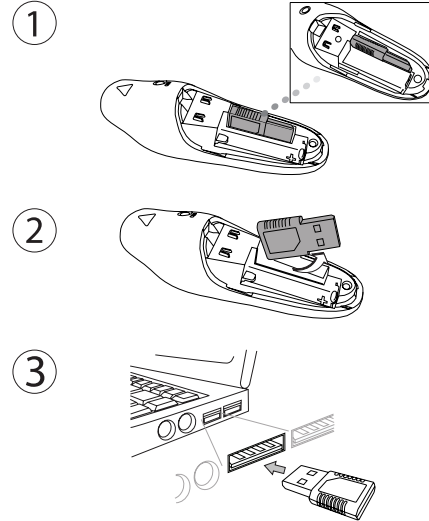


Insert the supplied battery, making sure the positive (+) and negative (-) ends of the battery match the polarity indicators inside the battery compartment.



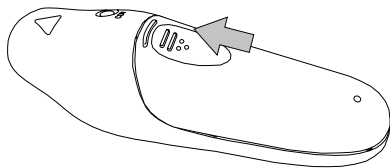
Connecting the Receiver

Plug the USB receiver into an open USB port on your computer. Your computer's operating system will identify the receiver and install the default driver.

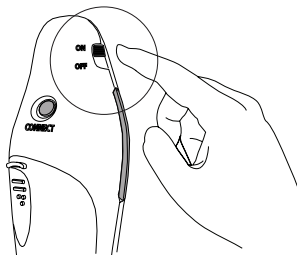


Targus Wireless Presenter with Laser Pointer

Slide the battery cover back into position until it "clicks" firmly into place.



Turn on the presenter.



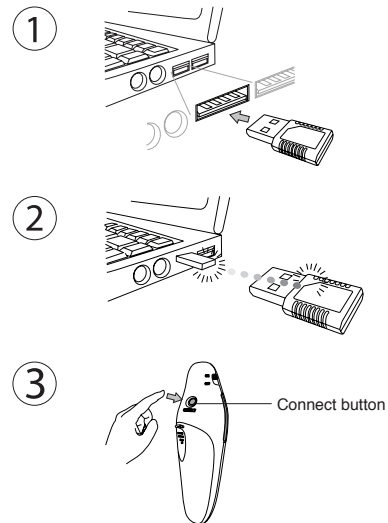
5

folding line
 2 staples here (saddle stitching)

Targus Wireless Presenter with Laser Pointer

Synchronizing your Wireless Presenter

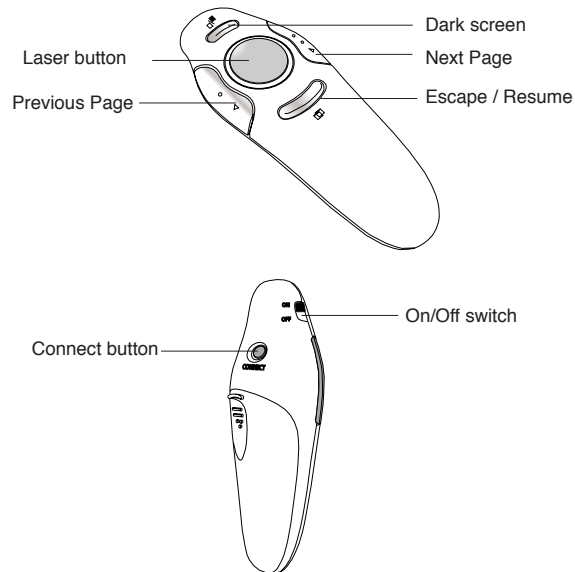
The receiver and presenter should synch up automatically. However, in some cases they may not synchronize properly due to environmental interference or other causes. If this is the case, you must re-establish the link.



6

folding line
 2 staples here (saddle stitching)

Using your Wireless Presenter



Safety Measures

- To avoid possible eye damage, never point the presenter's laser at people, especially their faces, or look directly into the presenter's laser beam.
- Avoid pointing the presenter's laser beam at a mirror or other highly-reflective surface.
- Keep the presenter away from young children.
- Never view the presenter's laser beam using telescopic devices, such as a microscope or binoculars.
- Any attempt to disassemble, adjust or repair the presenter may result in exposure to laser light or other safety hazards.

Troubleshooting

What do I do if the response time of the presenter is slow or it intermittently stops working?

- Make sure that the presenter is within 40 feet (12 m) of its receiver.
- Increase the distance between the presenter's receiver and the base units of other wireless devices.
- Turn off any wireless devices and their base units that are near the presenter's receiver.
- Replace the battery.
- Synchronize the receiver and presenter. See "Synchronizing Your Wireless Presenter"

Product Specification

Model # : AMP16B (Wireless Presenter)

RF	2.400GHz-2.483GHz
Battery Type	AAA battery
Effective RF Communication Range	12 meter max
Rating	1.5V --- 100mA

Model # : AMP16BR (Wireless Receiver)

RF	2.400GHz-2.483GHz
Interface	USB1.1/2.0
Rating	5V --- 100mA

Technical Support

For technical questions, please visit:

US	Internet: http://targus.com/us/support
Australia	Internet: http://www.targus.com/au/support Email: infoaust@targus.com Telephone: 1800-641-645
New Zealand	Telephone: 0800-633-222
Latin America	Email: soporte@targus.com

Product Registration

Targus recommends that you register your Targus accessory shortly after purchasing it. Go to: http://targus.com/us/product_registration
You will need to provide your full name, email address, country of residence and product information.

One year warranty

We pride ourselves on the quality of our products. For complete warranty details and a list of our worldwide offices, please visit www.targus.com. Targus product warranty does not cover any device or product that is not manufactured by Targus (including, but not limited to, laptops, smartphones, devices, or any other product that may be used in connection with the Targus product). Australian customers: For complete warranty details see warranty statement enclosed.

Targus is a registered trademark of Targus International, LLC in the U.S. and in certain other countries. All logos and registered trademarks are the property of their respective owners. ©2019 Targus, 1211 North Miller Street, Anaheim, CA 92806. All rights reserved.

Targus Wireless Presenter with Laser Pointer

AUSTRALIAN AND NEW ZEALAND CONSUMERS ONLY

Thank you for your purchase. Targus warrants to the original purchaser that its products are free from defects in materials and workmanship, during the specified warranty period, and lasts as long as the original purchaser owns the product. The warranty period is stated on the packaging or in the documentation provided with this Targus product.

Targus' Limited Product Warranty excludes damage caused by accident, neglect, abuse, misuse, improper care, normal wear and tear, ownership transfer, or alteration. The limited warranty also excludes any product that is not manufactured by Targus (including, without limitation, laptops, smartphones, devices, tablets, or any other non-Targus item) that is used in connection with the Targus product.

In the event that the Targus product has a defect in materials or workmanship Targus will, after receiving a warranty claim and inspecting the product, at its discretion, do one of the following: repair, replace, or refund with the same or a similar product (or part) of no lesser quality and ship it to the original purchaser at Targus' expense. As part of this inspection, proof of purchase will be required. There is no charge for inspection. To make a warranty claim, please contact Targus Australia or New Zealand (see details below), or return the product to the place of purchase. The original purchaser must bear the cost of the delivery to Targus.

Under Australian and/or New Zealand Consumer Laws, in addition to any warranty Targus gives, our products come with guarantees that cannot be excluded. You are entitled to a replacement or refund for a major failure and compensation for any other reasonably foreseeable loss or damage. You are entitled to have the products repaired or replaced if they fail to be of acceptable quality and the failure does not amount to a major failure.

For any warranty question, contact Targus Australia Pty. Ltd. (i) by mail at Suite 2, Level 8, 5 Rider Boulevard, Rhodes NSW 2138, by phone AUS 1800 641 645 or NZ 0800 633 222 or by Email: infoaust@targus.com. For additional information, check out our website at targus.com/au/warranty.

Regulatory Compliance

This device complies with Part 15 of the FCC Rules. Operation is subject to the following two conditions: (1) This device may not cause harmful interference, and (2) This device must accept any interference received, including interference that may cause undesired operation.

Targus Wireless Presenter with Laser Pointer

RF warning statement

The device has been evaluated to meet general RF exposure requirement. The device can be used in portable exposure condition without restriction.

FCC Statement

Tested to Comply

This device complies with Part 15 of the FCC Rules. Operation is subject to the following two conditions:

1. This device may not cause harmful interference, and
2. This device must accept any interference received, including interference that may cause undesired operation.

Warning: Changes or modifications not expressly approved by the party responsible for compliance could void the user's authority to operate the equipment.

NOTE: This equipment has been tested and found to comply with the limits for a Class B digital device, pursuant to Part 15 of the FCC Rules. These limits are designed to provide reasonable protection against harmful interference in a residential installation.

This equipment generates uses and can radiate radio frequency energy and, if not installed and used in accordance with the instructions, may cause harmful interference to radio communications. However, there is no guarantee that interference will not occur in a particular installation. If this equipment does cause harmful interference to radio or television reception, which can be determined by turning the equipment off and on, the user is encouraged to try to correct the interference by one or more of the following measures:

- Reorient or relocate the receiving antenna.
- Increase the separation between the equipment and receiver.
- Connect the equipment into an outlet on a circuit different from that to which the receiver is connected.
- Consult the dealer or an experienced radio/TV technician for help.

Declaration of Conformity

Hereby, Targus, declares that this device is in compliance with the essential requirements and other relevant provisions of Directive 2014/53/EU.

Targus Wireless Presenter with Laser Pointer



AVOID EXPOSURE--HAZARDOUS ELECTROMAGNETIC RADIATION EMITTED FROM THIS APERTURE.

LASER RADIATION. DO NOT STARE INTO THE BEAM OR VIEW DIRECTLY WITH OPTICAL INSTRUMENTS. CLASS 2 LASER PRODUCT.

NEVER POINT A LASER BEAM INTO A PERSON'S EYES OR VIEW A LASER BEAM DIRECTLY, AS PROLONGED EXPOSURE CAN BE HAZARDOUS TO THE EYES. MOMENTARY EXPOSURE FROM A LASER POINTER, SUCH AS AN INADVERTENT SWEEP OF THE LIGHT ACROSS A PERSON'S EYES, MAY CAUSE TEMPORARY FLASH BLINDNESS SIMILAR TO THE EFFECT OF A CAMERA FLASH BULB. ALTHOUGH THIS CONDITION IS TEMPORARY, IT CAN BECOME MORE DANGEROUS IF THE EXPOSED PERSON IS ENGAGED IN A VISION-CRITICAL ACTIVITY SUCH AS DRIVING.

CAUTION: ANY CHANGES OR MODIFICATIONS NOT EXPRESSLY APPROVED BY THE PARTY RESPONSIBLE FOR COMPLIANCE COULD VOID THE USER'S AUTHORITY TO OPERATE THE EQUIPMENT.

THIS DEVICE AND ITS ANTENNA(S) MUST NOT BE CO-LOCATED OR OPERATING IN CONJUNCTION WITH ANY OTHER ANTENNA OR TRANSMITTER. YOUR DEVICE CONTAINS A LOW POWER TRANSMITTER. WHEN DEVICE IS TRANSMITTED IT SENDS OUT RADIO FREQUENCY (RF) SIGNAL. NOTE: THE MANUFACTURER IS NOT RESPONSIBLE FOR ANY RADIO OR TV INTERFERENCE CAUSED BY UNAUTHORIZED MODIFICATIONS TO THIS EQUIPMENT. SUCH MODIFICATIONS COULD VOID THE USER'S AUTHORITY TO OPERATE THE EQUIPMENT.

Targus Wireless Presenter with Laser Pointer

FCC RF Radiation Exposure Statement:

1. This Transmitter must not be co-located or operating in conjunction with any other antenna or transmitter.
2. For body worn operation, this device has been tested and meets FCC RF exposure guidelines. When used with an accessory that contains metal may not ensure compliance with FCC RF exposure guidelines.



Supplier's Declaration of Conformity

Per FCC Part 2 Section 2.1077(a)



Manufacturer/	Targus International LLC	Tel:	1-714-765-5555
Responsible Party :			
Address :	1211 North Miller Street	Fax:	1-714-765-5599
	Anaheim, CA 92806 USA	Internet:	www.targus.com

Hereby declares that the Product

Trade name: Targus

Product name: Wireless Presenter (Include Wireless Receiver)

Model number: AMP16B (Include Wireless Receiver AMP16BR)

Conforms to the following specifications

FCC CFR Title 47 Part 15 Subpart B and ANSI C63.4-2014 standard limits
 The test data & results are referred to the test report Number: (MH2018/90231)

Supplementary Information:

This device complies with part 15 of the FCC Rules. Operation is subject to the following two conditions: (1) This device may not cause harmful interference, and (2) this device must accept any interference received, including interference that may cause undesired operation.

Director, Quality & Compliance, Targus International LLC	CF Ngoh
Function Title	Name
Dec 11, 2018	
Date	Signed for and on behalf of Targus