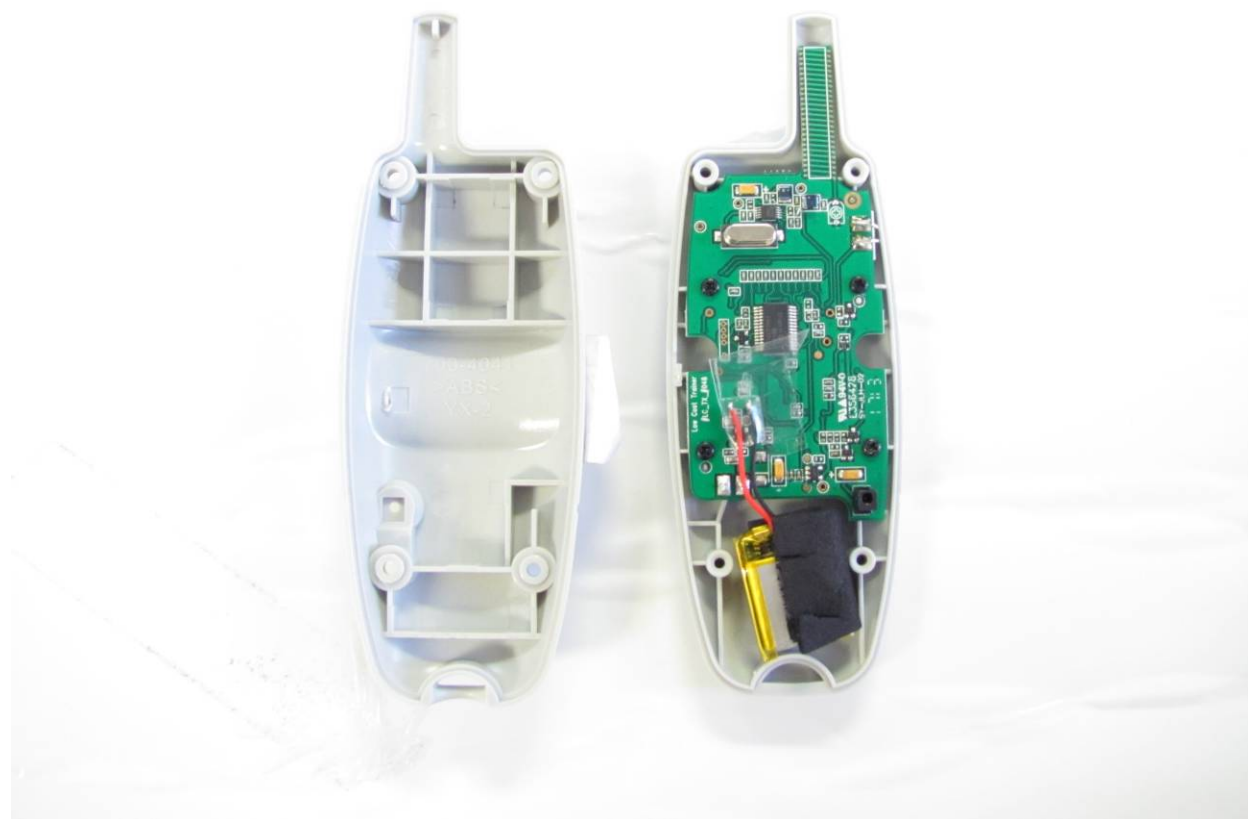


US Tech Test Report:  
FCC ID:  
IC:  
Test Report Number:  
Issue Date:  
Customer:  
Model:

FCC Part 15 Certification/ RSS 210  
KE3-3003227  
2721A-3003227  
17-0149  
July 18, 2017  
Radio Systems  
FS-TRN

## INTERNAL PHOTOGRAPHS



**Figure 1. Enclosure Open**

US Tech Test Report:  
FCC ID:  
IC:  
Test Report Number:  
Issue Date:  
Customer:  
Model:

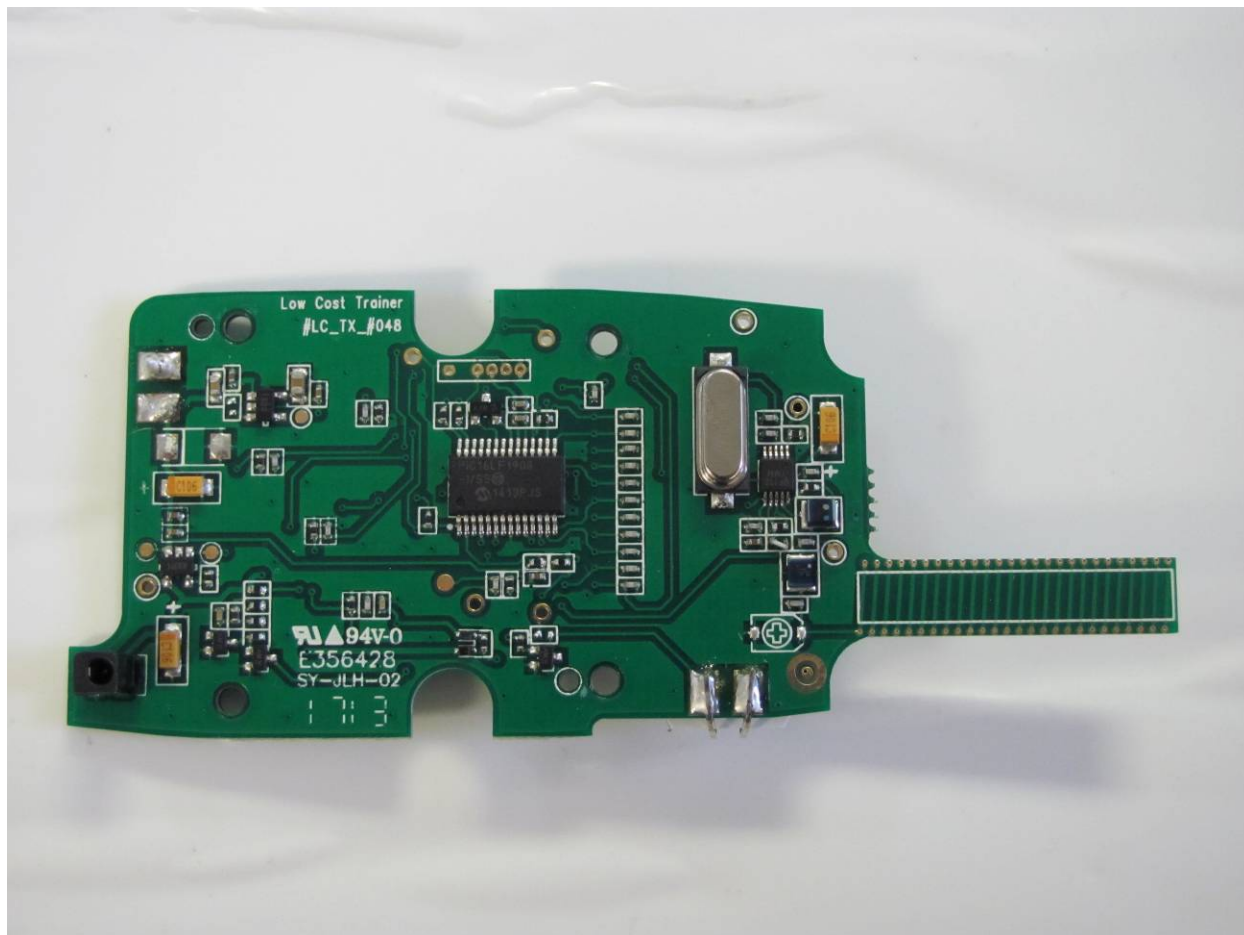
FCC Part 15 Certification/ RSS 210  
KE3-3003227  
2721A-3003227  
17-0149  
July 18, 2017  
Radio Systems  
FS-TRN



**Figure 2. PCB Exposed, Battery Removed**

US Tech Test Report:  
FCC ID:  
IC:  
Test Report Number:  
Issue Date:  
Customer:  
Model:

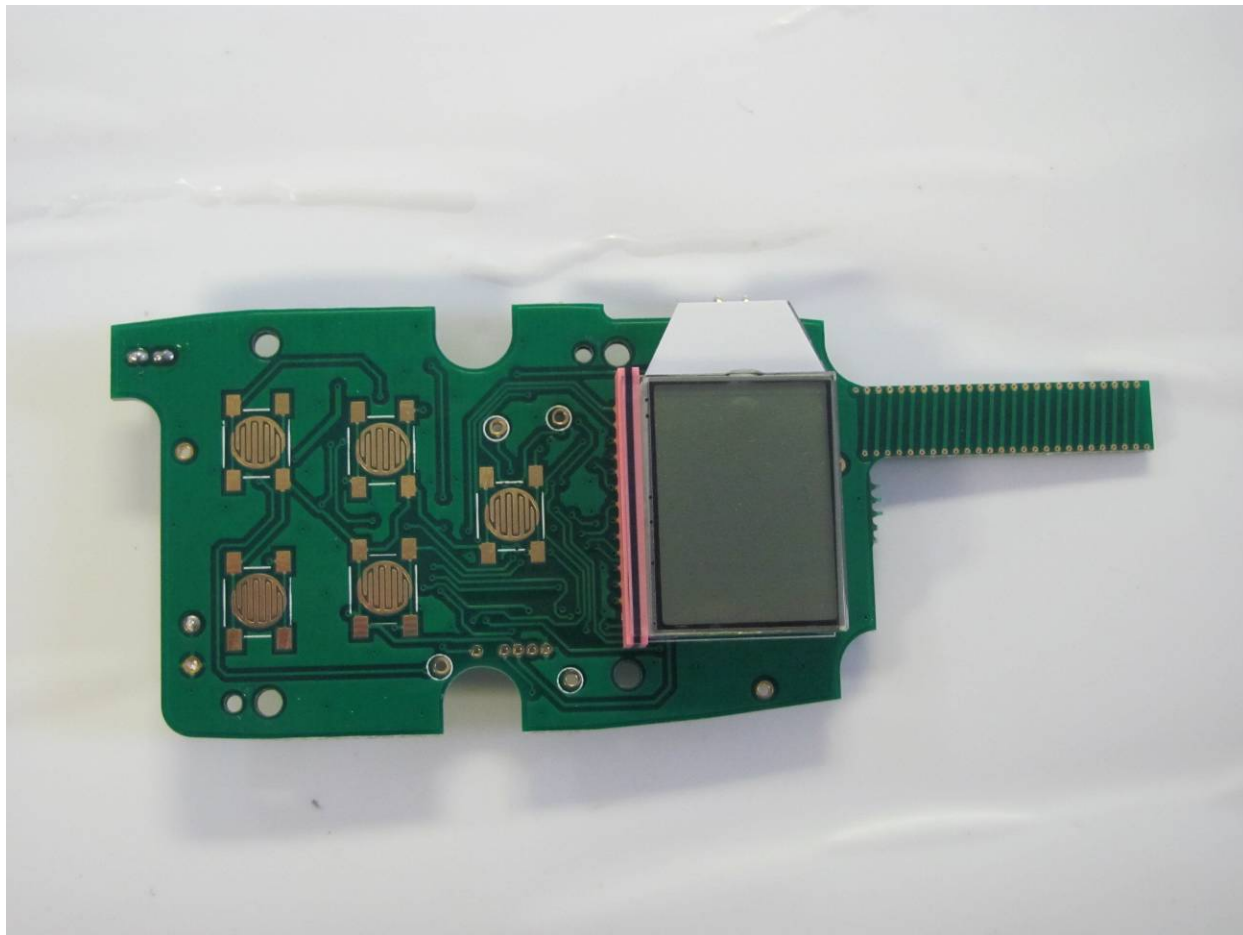
FCC Part 15 Certification/ RSS 210  
KE3-3003227  
2721A-3003227  
17-0149  
July 18, 2017  
Radio Systems  
FS-TRN



**Figure 3. PCB, Component Side**

US Tech Test Report:  
FCC ID:  
IC:  
Test Report Number:  
Issue Date:  
Customer:  
Model:

FCC Part 15 Certification/ RSS 210  
KE3-3003227  
2721A-3003227  
17-0149  
July 18, 2017  
Radio Systems  
FS-TRN



**Figure 4. PCB, LCD Display Side**

Note: No components underneath the LCD display. LCD is soldered to the PCB.