

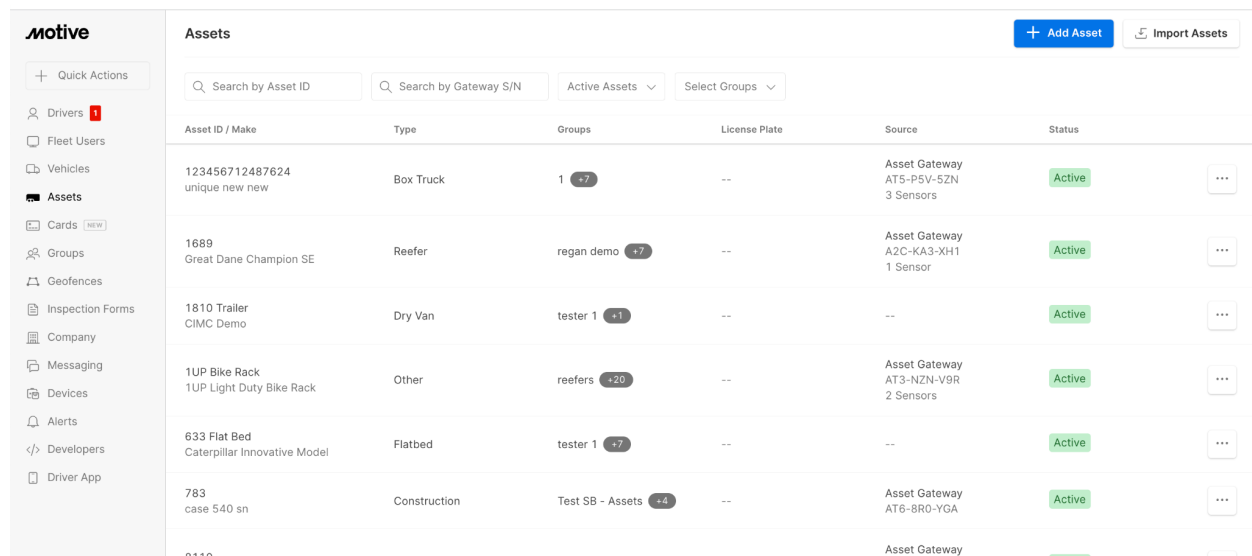
Asset Gateway Mini - Beta Installation Guide

Initial Setup

- 1.) Unbox the Device & Make sure that the Device is in good condition.
 - a.) Contents of the box is as follows
 - i.) 4 Wood Screws
 - ii.) 4 Self Tapping Screws
 - iii.) 1 Asset Gateway Mini
 - b.) If it's to be installed in battery mode, a cable is not needed
 - c.) If it's to be installed in cable mode, make sure that the cable is present
- 2.) Find a good flat mounting location

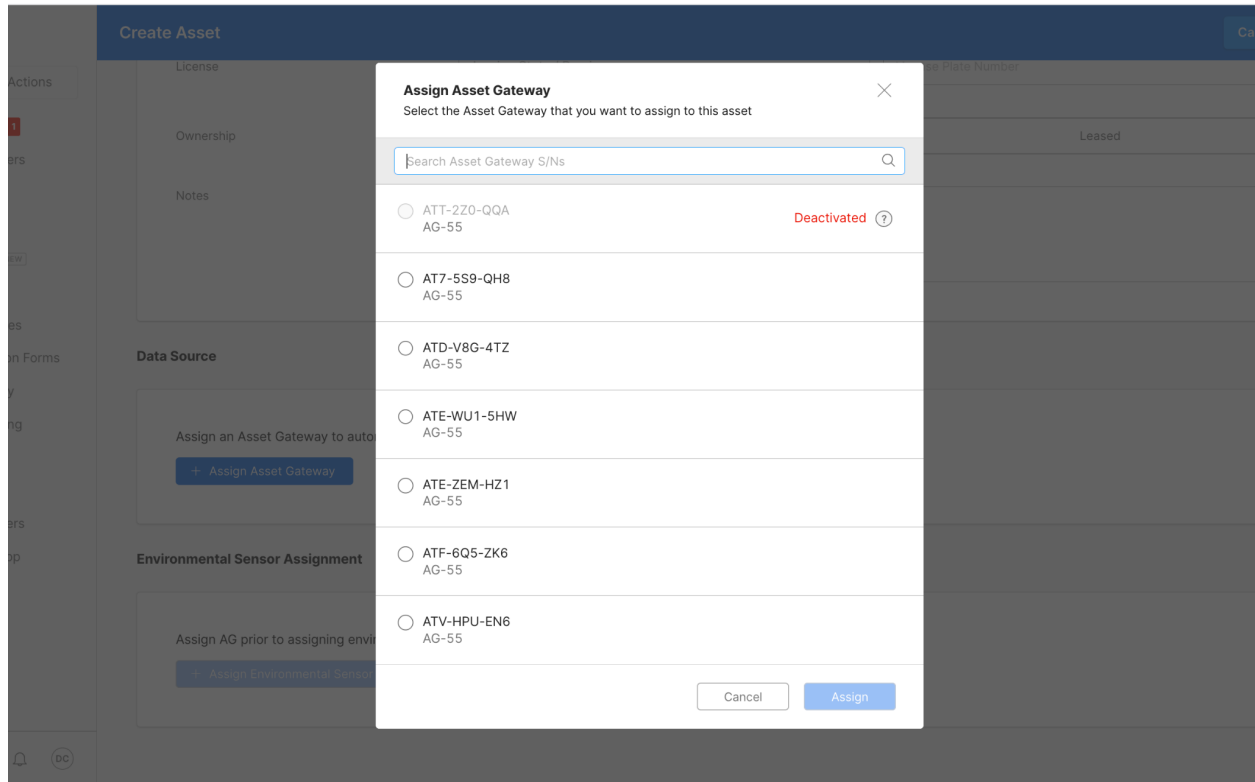
Assign the Asset Gateway Mini

- 1.) On the fleet dashboard, if the asset hasn't been created, create the asset profile



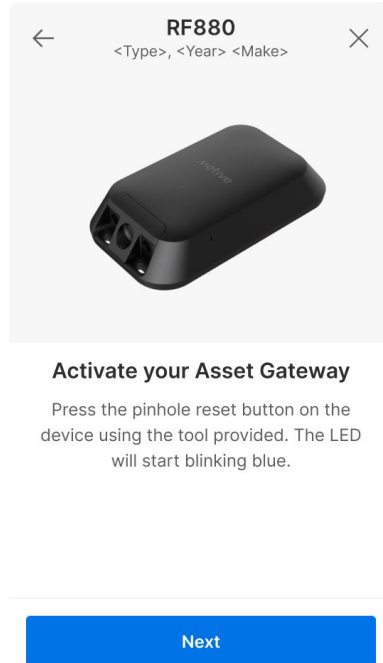
Assets						+ Add Asset	Import Assets
Q Search by Asset ID		Q Search by Gateway S/N		Active Assets	Select Groups		
Asset ID / Make	Type	Groups	License Plate	Source	Status		
123456712487624 unique new new	Box Truck	1 +7	--	Asset Gateway AT5-PSV-5ZN 3 Sensors	Active	...	
1689 Great Dane Champion SE	Reefer	regan demo +7	--	Asset Gateway A2C-KA3-XH1 1 Sensor	Active	...	
1810 Trailer CIMC Demo	Dry Van	tester 1 +1	--	--	Active	...	
1UP Bike Rack 1UP Light Duty Bike Rack	Other	reefers +20	--	Asset Gateway AT3-NZN-V9R 2 Sensors	Active	...	
633 Flat Bed Caterpillar Innovative Model	Flatbed	tester 1 +7	--	--	Active	...	
783 case 540 sn	Construction	Test SB - Assets +4	--	Asset Gateway AT6-BR0-YGA	Active	...	
R110				Asset Gateway			

- a.) Go to assets, click on "add assets" in the upper right hand corner, and then input the relevant asset information including the asset gateway serial number
- b.) If the asset profile has been created, click on the asset, and find the correct asset gateway serial number.
- c.) Click save and the asset gateway will be assigned to the respective asset.



Battery Install

- 1.) Activate the Asset Gateway outside with a clear view of the sky by pressing the reset button on the side with the reset pin provided.
 - a.) The LED will flash Blue indicating the device is now turned on.
 - b.) (Take down the serial number of the device (if you haven't assigned the device yet)



- 2.) Mount the Asset Gateway on a flat surface with the screws provided with the Motive logo facing up towards the sky for the best GPS performance


Cable Install

- 1.) Activate the Asset Gateway by pressing the reset button on the side with the reset pin provided.
 - a.) The LED will flash Blue indicating the device is now turned on.
 - b.) Take down the serial number of the device (if you haven't assigned the device yet)
- 2.) Connect the 3 wires of the Motive cable to an external power, ground, and ignition wire. (please do not cut off the black plastic housing attached to the wire = voltage regulator). The wire can be shortened up to that point.
 - a.) Black = Ground**
 - b.) Red = Power**
 - c.) Green = Ignition Signal**
 - Please make sure that the other cables in the wire are cut back to the jacket and are not exposed to the elements, which can cause an electrical short.
- 3.) Then connect the cable connector to the Asset Gateway by unfastening the back plate, and routing the cable through the hole.
 - a.) Align the two white arrows on the cable and the Asset Gateway Mini, and gently press the cable into the connector.
 - b.) Turn the red nut to secure the cable to the device

c.) Refasten the back plate to the asset gateway

←RF880×

<Type>, <Year> <Make>



Connect the cable

Step 2 of 2

[Align the two white arrows and plug the cable into the device. Tight the red nut to secure the cable and attach the front cover. Once connected, the LED on the device will start blinking blue.]

[Learn more](#)

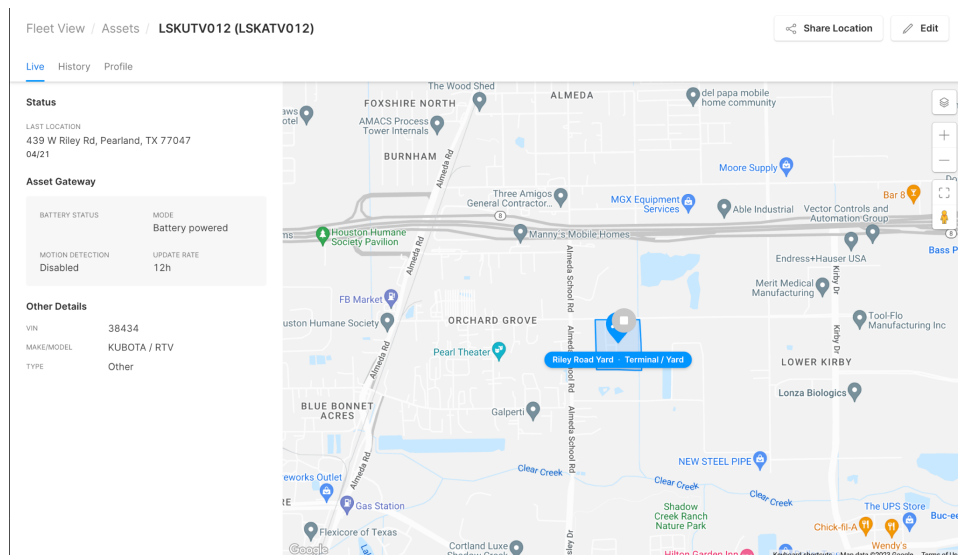
Next

4.) Mount and secure your Asset Gateway.

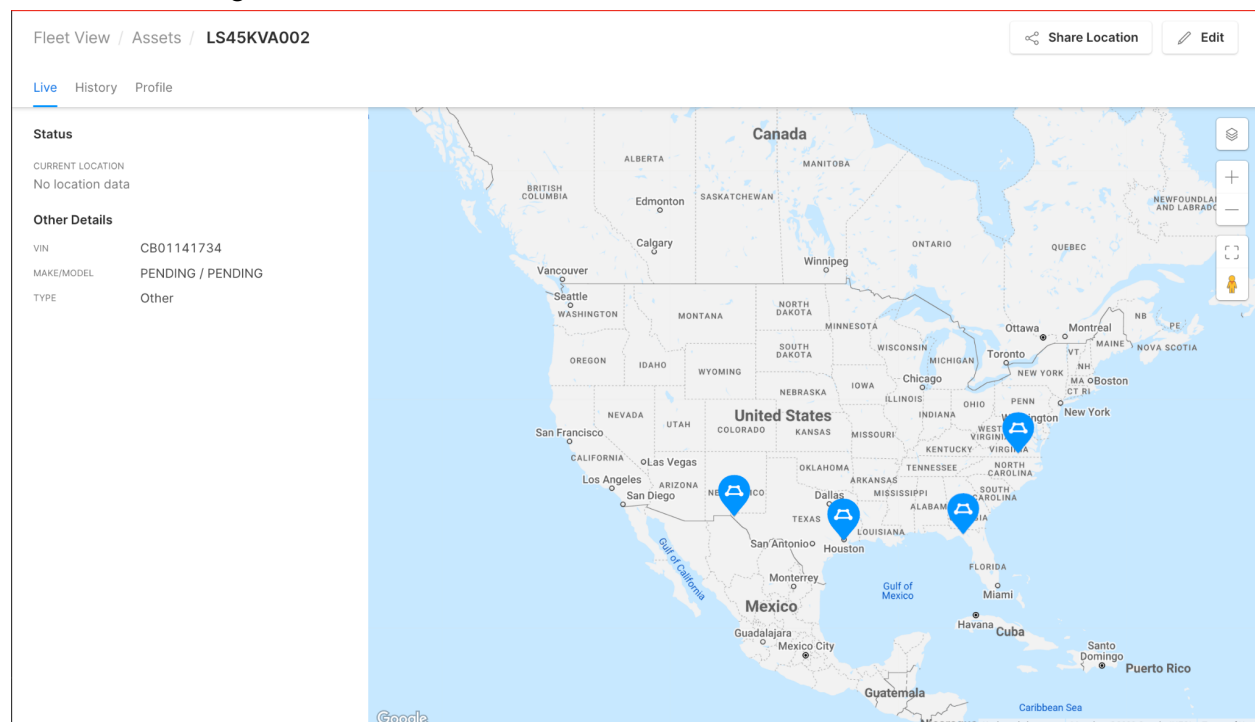
- a.) Make sure that the surface is flat before mounting.
- b.) Have Motive logo facing up for the best GPS performance.

Checking to see if the Install is Successful

- 1.) On the asset live page, if the Asset Gateway has gotten a GPS fix, the asset location will show up on the screen



- a.) If you see this screen, it means that the asset gateway has been assigned, but is still looking for a valid GPS location



- i.) If the asset gateway is cable powered, you can turn on the asset engine, and if it's indoors, bring the asset outdoors so that the asset gateway can get a clear line of sight for a GPS fix. Wait another

15-30 minutes, and you should be seeing the GPS location show up on your dashboard.

- ii.) If the asset gateway is battery powered, you'll need to wait another 12 hours for another fix. Bring the asset outside for a better line of sight for a GPS fix.