



802.11ac Long-Range USB Adapter Dual-Band 2.4GHz/5GHz

User Guide



Federal Communication Commission Interference Statement

This equipment has been tested and found to comply with the limits for a Class B digital device, pursuant to Part 15 of FCC Rules. These limits are designed to provide reasonable protection against harmful interference in a residential installation. This equipment generates, uses, and can radiate radio frequency energy and, if not installed and used in accordance with the instructions, may cause harmful interference to radio communications. However, there is no guarantee that interference will not occur in a particular installation. If this equipment does cause harmful interference to radio or television reception, which can be determined by turning the equipment off and on, the user is encouraged to try to correct the interference by one or more of the following measures:

1. Reorient or relocate the receiving antenna.
2. Increase the separation between the equipment and receiver.
3. Connect the equipment into an outlet on a circuit different from that to which the receiver is connected.
4. Consult the dealer or an experienced radio technician for help.

FCC Caution

To assure continued compliance, (Example - use only shielded interface cables when connecting to computer or peripheral devices) any changes or modifications not expressly approved by the party responsible for compliance could void the user's authority to operate the equipment.

This device complies with Part 15 of the FCC Rules. Operation is subject to the following two conditions:

- (1) This device may not cause harmful interference.
- (2) This Device must accept any interference received, including interference that may cause undesired operation.

Federal Communication Commission (FCC) Radiation Exposure Statement

This equipment complies with FCC radiation exposure set forth for an uncontrolled environment. In order to avoid the possibility of exceeding the FCC radio frequency exposure limits, human proximity to the antenna shall not be less than 20 cm (8 inches) during normal operation.

CE mark Warning

This is a class B device, in a domestic environment; this product may cause radio interference, in which case the user may be required to take adequate measures.

R&TTE Compliance Statement

This equipment complies with all the requirements of DIRECTIVE 1999/5/CE OF THE EUROPEAN PARLIAMENT AND THE COUNCIL OF 9 March 1999 on radio equipment and telecommunication terminal Equipment and the mutual recognition of their conformity (R&TTE). The R&TTE Directive repeals and replaces in the directive 98/13/EEC (Telecommunications Terminal Equipment and Satellite Earth Station Equipment) As of April 8, 2000.

Safety

This equipment is designed with the utmost care for the safety of those who install and use it. However, special attention must be paid to the dangers of electric shock and static electricity when working with electrical equipment. All guidelines of this and of the computer manufacture must therefore be allowed at all times to ensure the safe use of the equipment.

EU Countries Intended for Use

The ETSI version of this device is intended for home and office use in Austria Belgium, Denmark, Finland, and France (with Frequency channel restrictions). Germany, Greece, Ireland, Italy, Luxembourg .The Netherlands, Portugal, Spain, Sweden and United Kingdom.

The ETSI version of this device is also authorized for use in EFTA member states Iceland, Liechtenstein, Norway and Switzerland.

WEEE regulation



To avoid the potential effects on the environment and human health as a result of the presence of hazardous substances in electrical and electronic equipment, end users of electrical and electronic equipment should understand the meaning of the crossed-out wheeled bin symbol. Do not dispose of WEEE as unsorted municipal waste and have to collect such WEEE separately.

Table of Content

Overview	3
Unpacking information	3
Introduction to the ALFA Indoor USB Adapter	4
Installation Guide	5
Software Installation	5
Management Guide	9
Making a Basic Network Connection	9
Ad-Hoc Mode	9
Infrastructure mode	11
Introduction to the Wireless LAN Utility	13
Starting the Wireless LAN Utility	13
General	14
Profile	15
Available Network	16
Advanced	17
Status	18
Statistics	18
Appendix	19
RT-Set Setup Wizard	19
Use this adapter as an AP	21
AP mode management guide	22
General	22
Advanced	23
Statistics	24
ICS (Internet Connection Sharing)	24

Overview

Thank you for purchasing this product. Please read this chapter to better understand your ALFA Long Range indoor USB Adapter

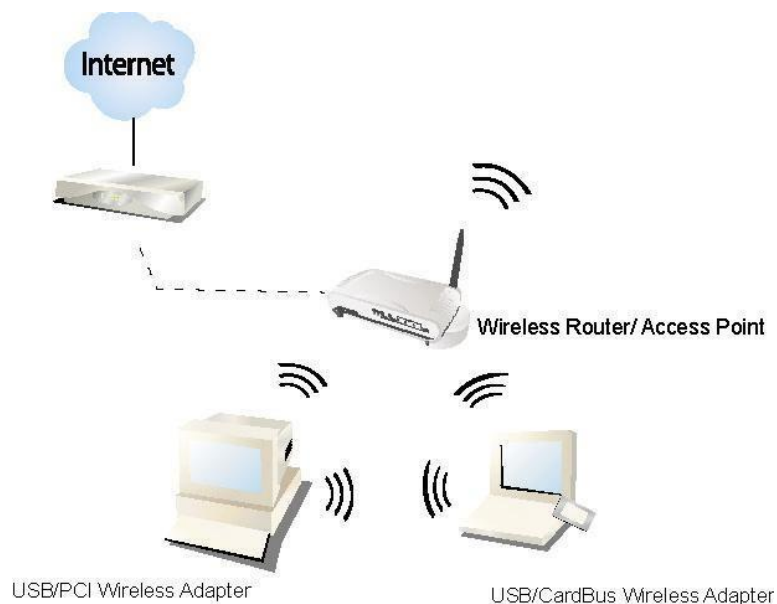
Unpacking information

Before getting started, please verify that your package includes the following items:

1. ALFA Long-Range WiFi Indoor USB Adapter
2. One Utility/ Manual CD
3. USB Cable

Introduction to the ALFA Indoor USB Adapter

The ALFA WiFi indoor USB adapter provides users to launch IEEE 802.11n/b/g or IEEE 802.11a/an/ac wireless network (depends on your Alfa USB adapter model) at 300Mbps in the 2.4GHz frequency or 867Mbps in the 5GHz frequency (depends on your Alfa USB adapter model), which is also compatible with IEEE 802.11a/b/g wireless devices at 11/54Mbps. You can configure this adapter with AP mode to connect/share to other 2.4GHz or 5GHz wireless computers or with Infrastructure mode to connect to a wireless AP or router for accessing to Internet. This adapter includes a convenient Utility for scanning available networks and saving preferred networks those users are usually connected with. Security encryption can also be configured by this utility.



Key Features

- Complies with IEEE 802.11ac/a/b/g/n wireless standard (Depends on Model)
- Support driver for Windows 2000, XP, Vista, Windows 7/8/8.1 and Windows 10
- Complies with Universal Serial Bus Rev. 1.0, 1.1, 2.0 and 3.0 specifications.(Depends on Model)
- Supports auto-installation and diagnostic utilities.
- High Speed transfer data rate up to 300Mbps in 2.4GHz and 867Mbps in 5GHz (Depends on Model)
- Support wireless data encryption with 64/128-bit WEP, WPA (TKIP with IEEE 802.1x), and AES functions.

Installation Guide

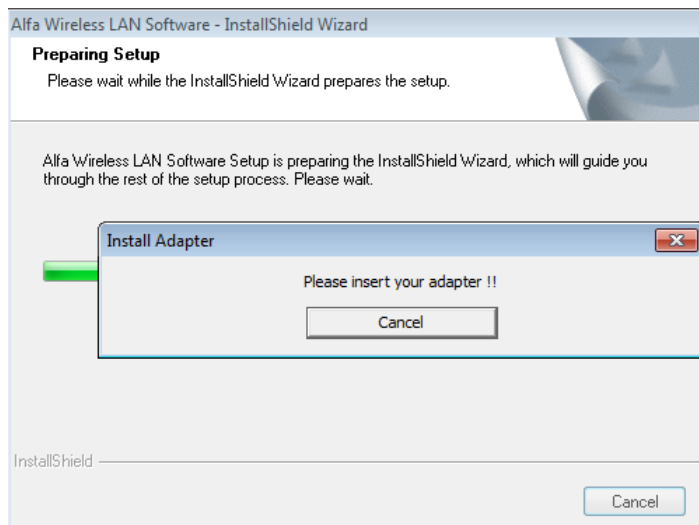
Software Installation

Note: The following driver installation guide uses Windows 7 as the presumed operation system. The procedures and screens in Windows 2000, XP, 8, 8.1 and 10 are similar with Windows 7.

Insert the installation CD that came with this product to your CD-ROM drive. Please click the **"Windows"** button from the popup menu for this product.

Note: If the CD-ROM fails to auto-run, please click on **"My Computer"** → **your CD-ROM Drive** will then double-click the **"AutoRun.exe"** to start this menu.

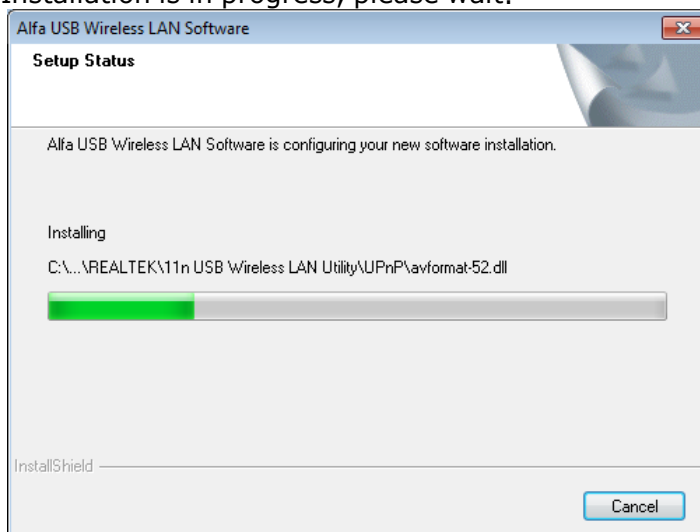
1. Please plug in your ALFA WiFi USB Adapter into USB port before the installation.



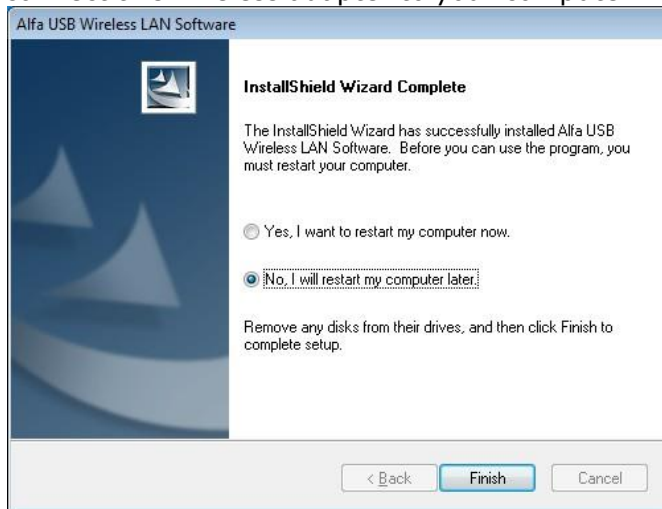
2. The welcome window will pop up. Click the **"Next"** button to proceed.



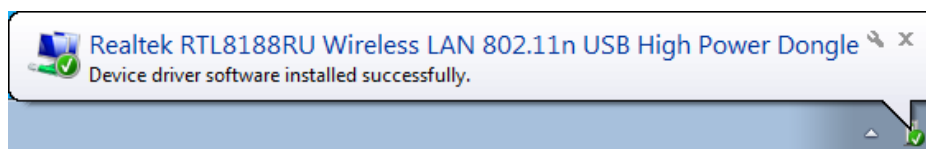
3. Installation is in progress, please wait.



4. Click the **"Finish"** button to complete driver and utility installation.
Note, please insert this USB wireless adapter to your computer if you're using Windows 10, 8, 7, Vista, XP, or Windows 2000.
If you are using Windows 98se or ME, please restart the system first before connect this wireless adapter to your computer.



5. New hardware is found after installation is completed in Windows 7



Found New Hardware Wizard in Windows XP, 2000, and Vista.

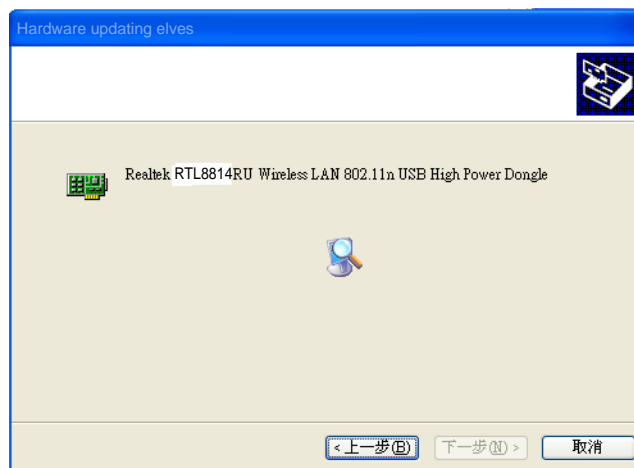
1. The **"Found New Hardware Wizard"** will pop up. (**Note:** This wizard won't pop up in Windows 98 and ME. The system finds the new hardware and installs the hardware automatically. Please skip the following steps)
2. Select **"No, not this time"** and click the **"Next"** button.



3. Select **"Install the software automatically"** and then click the **"Next"** button.



4. Please wait while installing the driver.



5. Click the **"Finish"** button to complete installation.



Management Guide


Please read this chapter to better understand the management interface of your ALFA Long Range Indoor USB Adapter

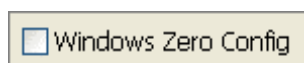
Making a Basic Network Connection

Before You Start

In the following instructions for making a network connection, we use the utility we provided to configure your wireless network settings.

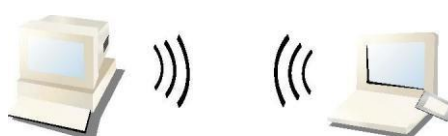
Note: For Windows XP users that want to configure your wireless network using this Utility, please perform the following procedures to disable your native Windows XP wireless support (Wireless Zero Configuration Service)

1. Double click the  icon on your desktop to start the utility.
2. Make sure that the “**Windows Zero Config**” checkbox is unchecked.



Ad-Hoc Mode

An Ad-Hoc mode wireless network connects two computers directly without the use of a router or AP. It is also known as a peer-to-peer network. For example, we can install this wireless adapter to two computers respectively. The communication between the two computers is an Ad-Hoc mode network.



Ad-Hoc Mode

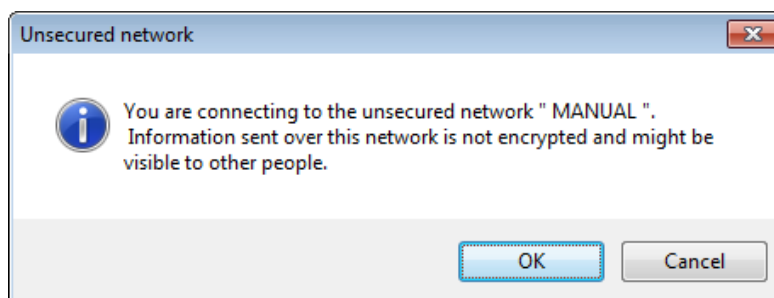
To use this adapter in Ad-Hoc Mode



1. Double click the icon on your desktop.
2. Click the **"Available Network"** button to scan available wireless network adapters. Double click on the network adapter that you are going to connect to.

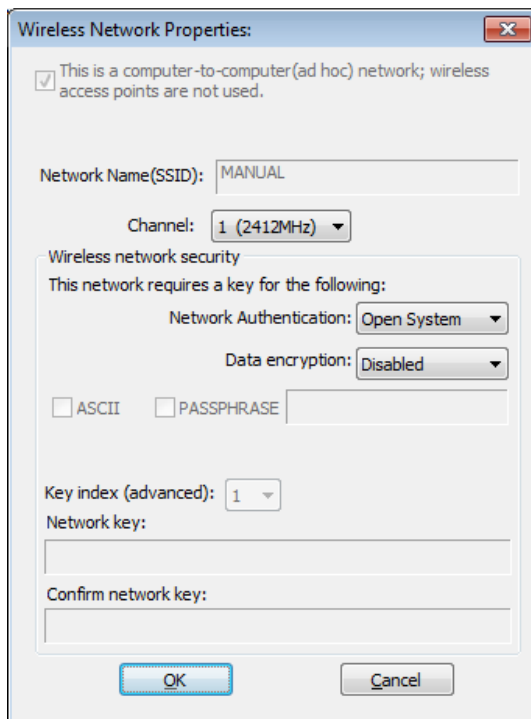
General	Profile	Available Network	Advanced	Status	Statistics	Wi-Fi Protect Setup
Available Network(s)						
SSID	Channel	Encryption	Network Authentication	Signal		
MANUAL	1	None	Unknown	100%		
will	1	TKIP/AES	WPA Pre-Shared Key/...	96%		
zz	1	None	Unknown	86%		
Cwell	6	TKIP/AES	WPA Pre-Shared Key/...	78%		
LASER	6	WEP	Unknown	80%		
AIP-W411	6	None	Unknown	100%		
RTL8186-GW	11	None	Unknown	56%		

3. Click the OK button to confirm that you are connecting to an open wireless network.



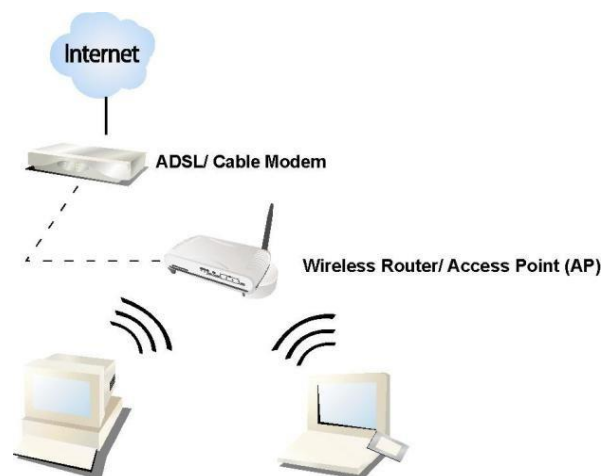
4. Click OK to add this network into the profile list.

Note: This example is an open wireless network. If you are going to connect to a Wireless adapter with security protection, you will have to configure the encryption settings in this profile to be corresponding to the other wireless adapter. Please click on the **"Network Authentication"** drop list to select an authentication method, and then select a **"Data encryption"** type. Fill in each required blanks and click **"OK"**.



Infrastructure mode


An Infrastructure Mode network contains at least one wireless client and one wireless AP or router. This client connects to Internet or intranet by communicating with this wireless AP.

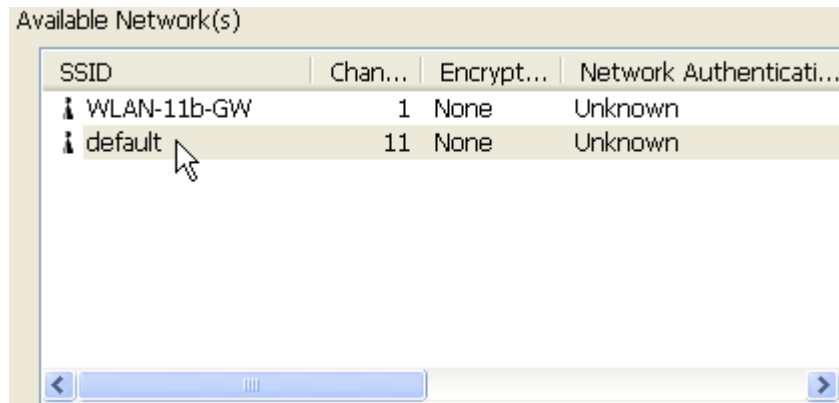


Infrastructure Mode

To use this adapter in Infrastructure Mode:



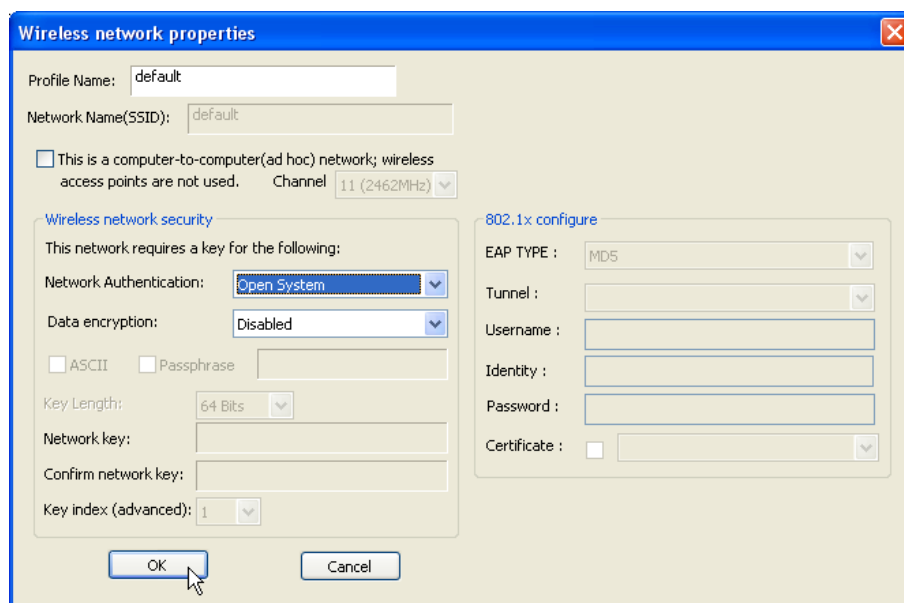
1. Double click the  icon on your desktop.
2. Click the **"Available Network"** button to scan available access points. Double click on the AP that you are going to connect to.



3. Click the OK button to confirm that you are connecting to an open wireless network.



4. Click **OK** to add this network into the profile list.



Note:


This example is an open wireless network. If you are going to connect to an AP with security protection, you will have to configure the encryption settings in this profile to be corresponding to your AP. Please click on the **"Network Authentication"** drop list to select an authentication method, and then select a **"Data encryption"** type. Fill in each required blanks and click **"OK"**.

Introduction to the Wireless LAN Utility

Note: This management instruction uses Windows 7 as the presumed operation system. Some functions are not supported in Windows 98se or Windows ME.

Starting the Wireless LAN Utility

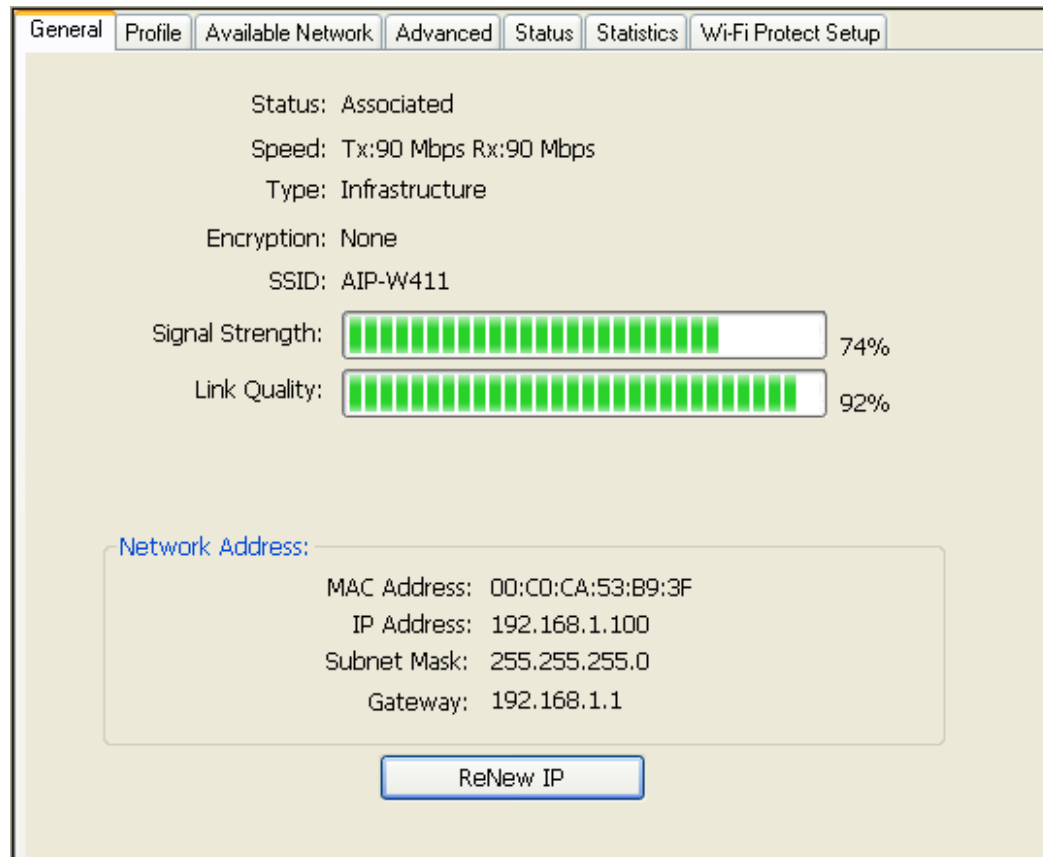


Double click the  shortcut on your desktop. The Wireless LAN Utility will pop up. You may click on the tabs above to configure this adapter. The checkboxes below provide the following functions:

Show Tray Icon	Check this checkbox to show the utility icon on your system tray, which is in the notification area at the lower-right corner of the windows desktop. You may also uncheck it to remove the utility icon from system tray.
Windows Zero Config (on Windows XP)	Uncheck this checkbox to use native Windows XP wireless support (Wireless Zero Configuration Service) instead of using this utility to configure your wireless network.
Radio Off	Check this checkbox to prevent this adapter from transmitting or receiving signals. Uncheck it to communicate.
Disable Adapter	Check this checkbox to disable this wireless adapter.
Virtual Wifi Disallowed (on Windows 7)	Check this checkbox to disable the Virtual Wifi Adapter on Windows 7

General

After starting the utility, the general page pops up. This **General** tab provides the information of your current wireless network connection. You may click the **Renew** button to refresh those listed information.



- Status:** Check if the device associated to target network.
- Speed:** The current connection speed
- Type:** Infrastructure mode or Ad-Hoc mode.
- Encryption:** The performing encryption mode for connecting to current network profile.
- SSID:** The SSID (network name) of the connected wireless network.
- Signal Strength:** Indicates the signal strength detected by this adapter.
- Network Address:** Shows the current IP addresses settings for this adapter.

Profile

The **Profile** tab lists the preferred connections. You can click the buttons on the right-hand side to configure each connection.

General Profile Available Network Advanced Status Statistics Wi-Fi Protect Setup

Available Profile(s)

Profile Name	SSID
--------------	------

Add

Remove

Edit

Duplicate

Set Default

Add Click this button to add a connection profile for this adapter.

Remove To remove a connection profile, click this profile on the profile list and click this button to delete it.

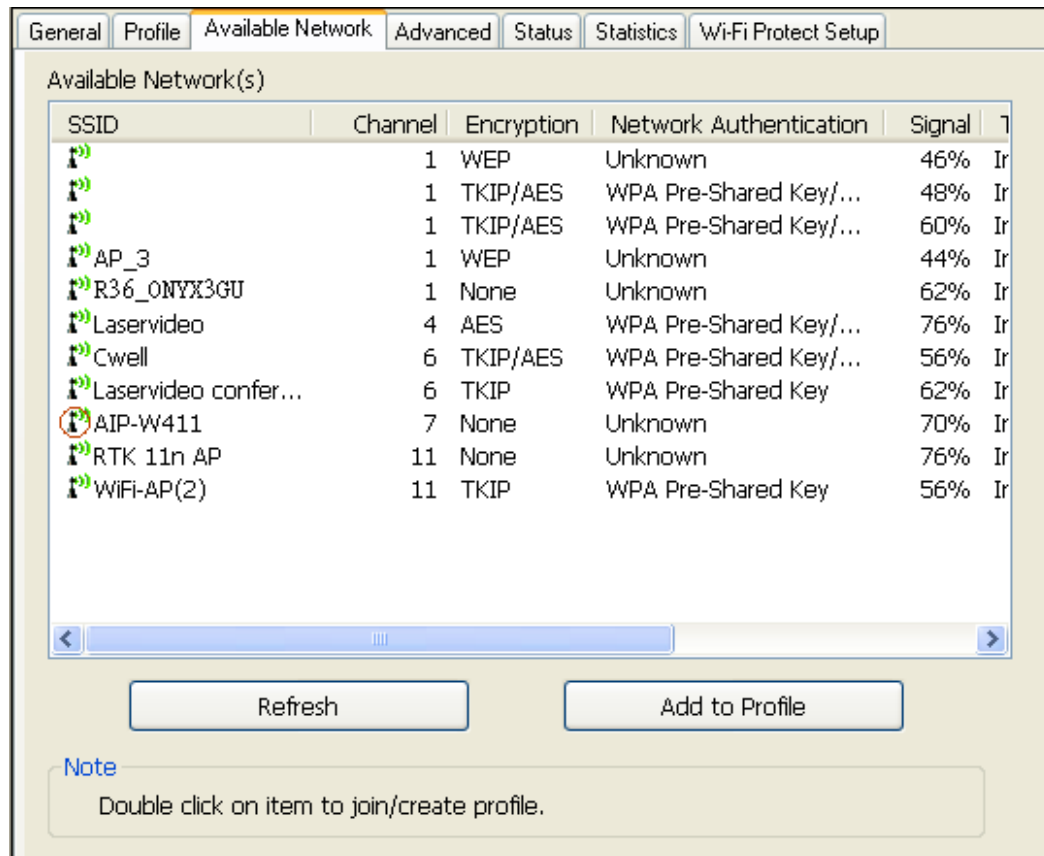
Edit To modify the configurations for a profile, click this profile on the profile list and click this button to edit.

Duplicate To make a copy of a profile, click the profile that you would like to have copied, and click this button to copy it.

Set Default To select a profile as your default wireless connection, select the profile on the list and click the Set Default button. You may also double click on each profile to select it as your default wireless connection.

Available Network

The available tab lists the reachable wireless network for the adapter.



Refresh

Click this button to rescan available networks around the adapter.

Add to Profile

To add an available Network to your profile list, select an available network and click this button to add.

Status

This tab shows the current connection status of this adapter.

General	Profile	Available Network	Advanced	Status	Statistics	Wi-Fi Protect Setup
Manufacturer		REALTEK				
NDIS Driver Version		1012.1.131.2011				
Short Radio Header		Yes				
Encryption		Disabled				
Authenticate		Open System				
Channel Set		WORLD WIDE				
MAC Address		00:CD:CA:53:B9:3F				
Data Rate (AUTO)		Tx:120 Mbps Rx:120 Mbps				
Channel (Frequency)		7 (2442 MHz)				
Status		Associated				
SSID		AIP-W411				
Network Type		Infrastructure				
Power Save Mode		None				
Associated AP MAC		00:CD:CA:5F:0D:90				
Up Time (hh:mm:ss)		0:05:33				

Statistics

See Statistics tab to show the transmission activity record. Clicking the **"Reset"** button recounts the values from zero.

General	Profile	Available Network	Advanced	Status	Statistics	Wi-Fi Protect Setup
---------	---------	-------------------	----------	--------	------------	---------------------

Counter Name	Value
Tx OK	480
Tx Error	0
Rx OK	721
Rx Packet Count	721
Rx Retry	22
Rx ICV Error	0

Reset

Appendix

RT-Set Setup Wizard

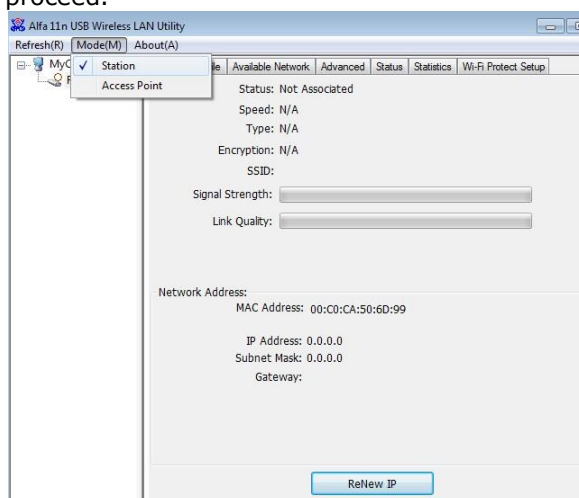
For Windows users to connect to a wireless network easily, we also provide the RT-Set setup wizard to help users set their preferred wireless network step by step. You can configure your wireless network via this RT-Set setup wizard in the following two modes:

Station mode (infrastructure): Select this mode to connect to the AP (access point) in your LAN.

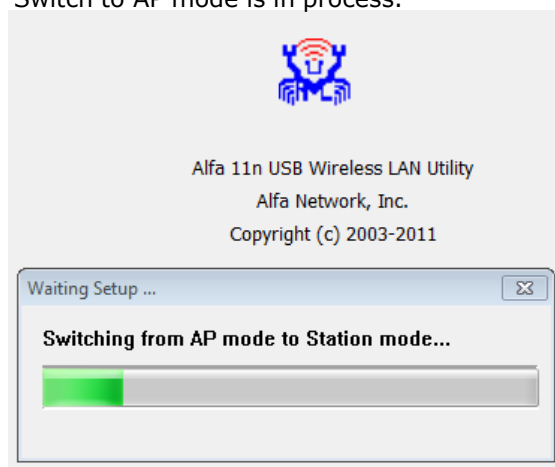
AP mode: Select this mode to perform this adapter as an AP (access point).

Connect to a wireless network in infrastructure mode

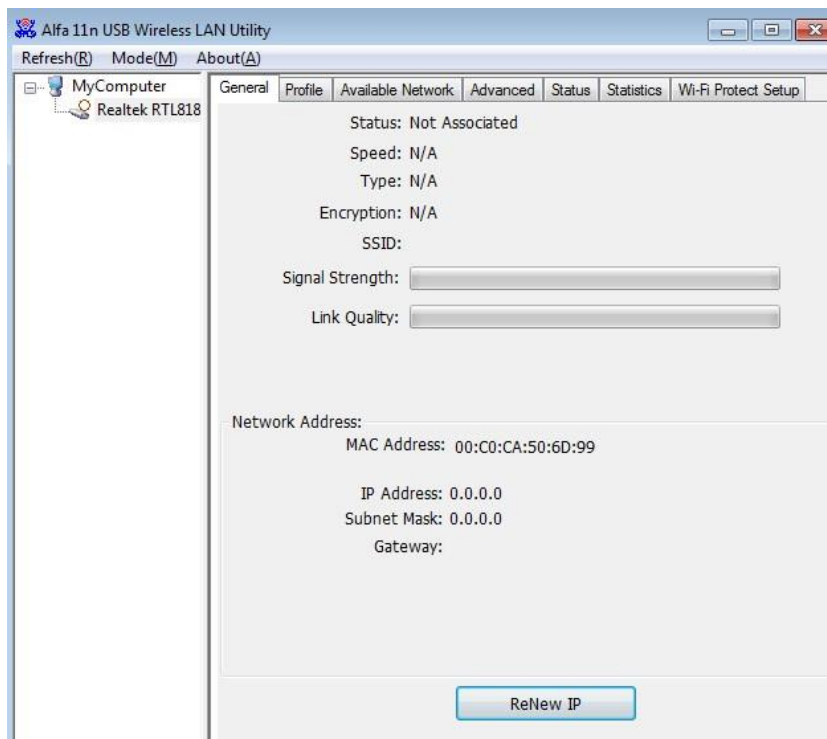
1. To connect this adapter to an AP, select the **"Station"** from the drop down menu to proceed.



2. Switch to AP mode is in process.

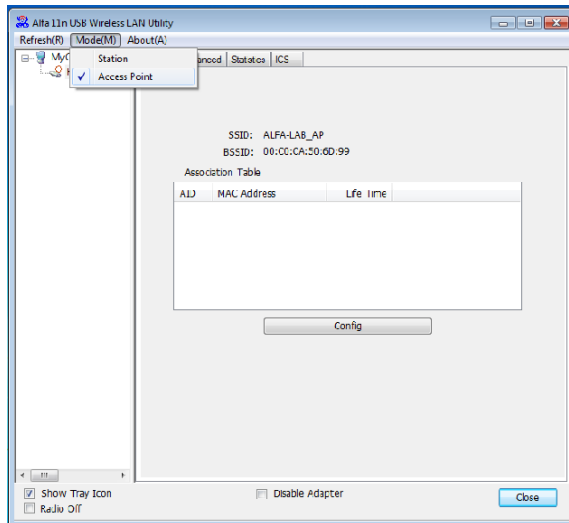


3. AWUS036NHV is now in AP mode and ready for configuration.

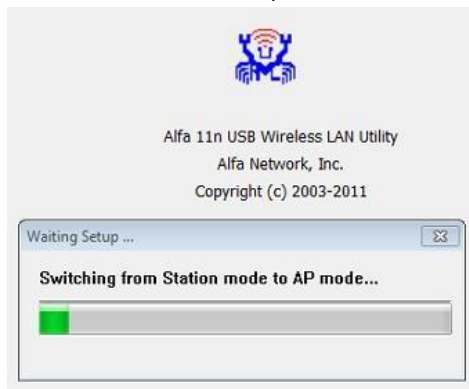


Use this adapter as an AP

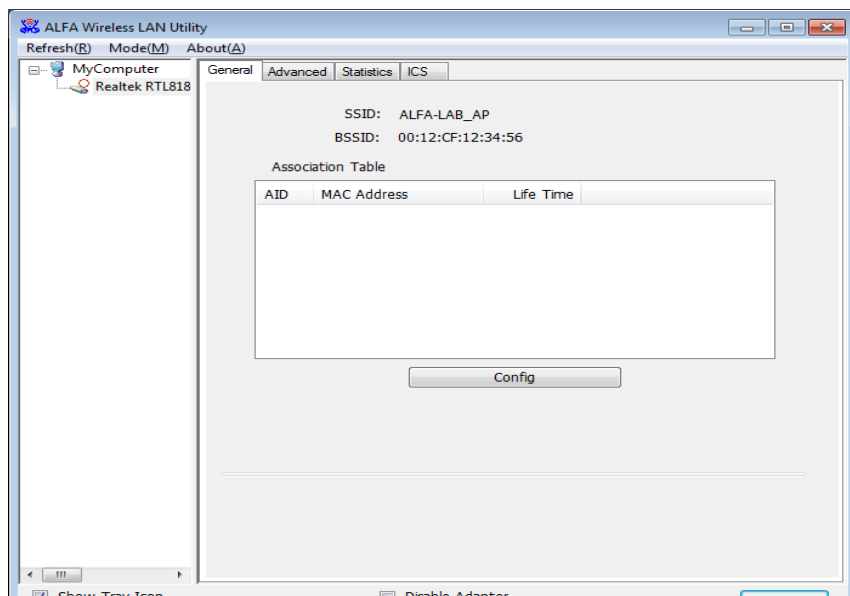
1. To use this adapter as an AP (access point), use drop down menu to select the "Access Point" mode to proceed.



2. Switch to AP mode is in process.



3. AWUS036NHV is now in AP mode and ready for configuration

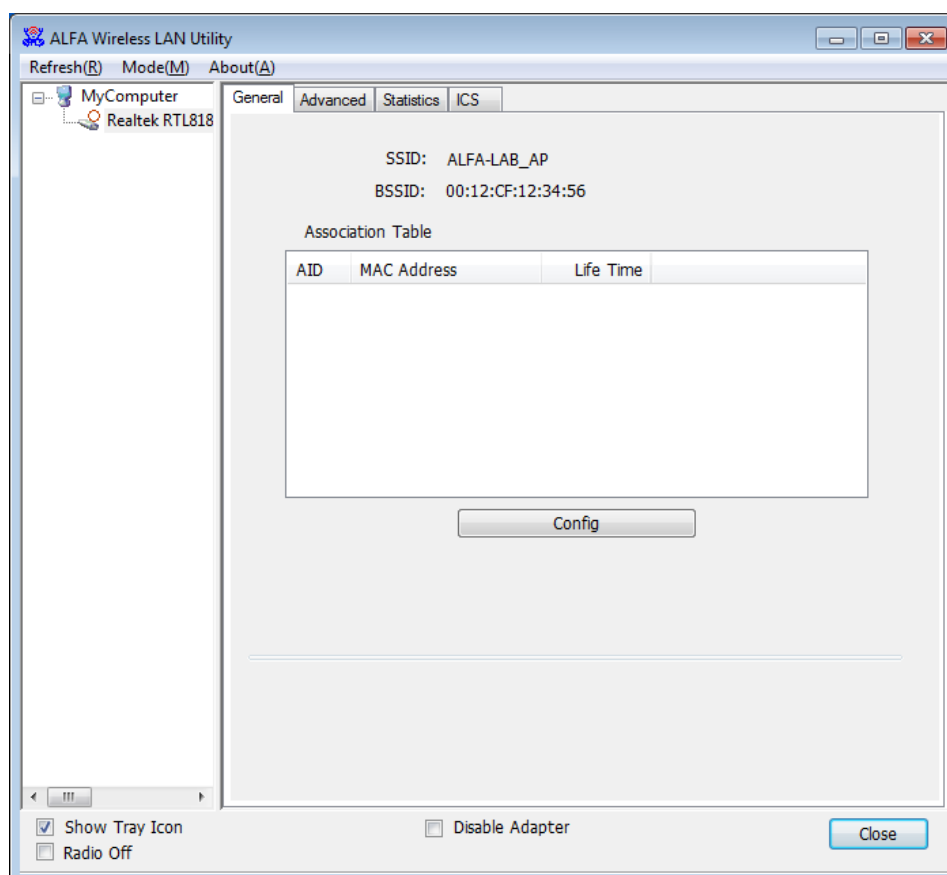


AP mode management guide

General

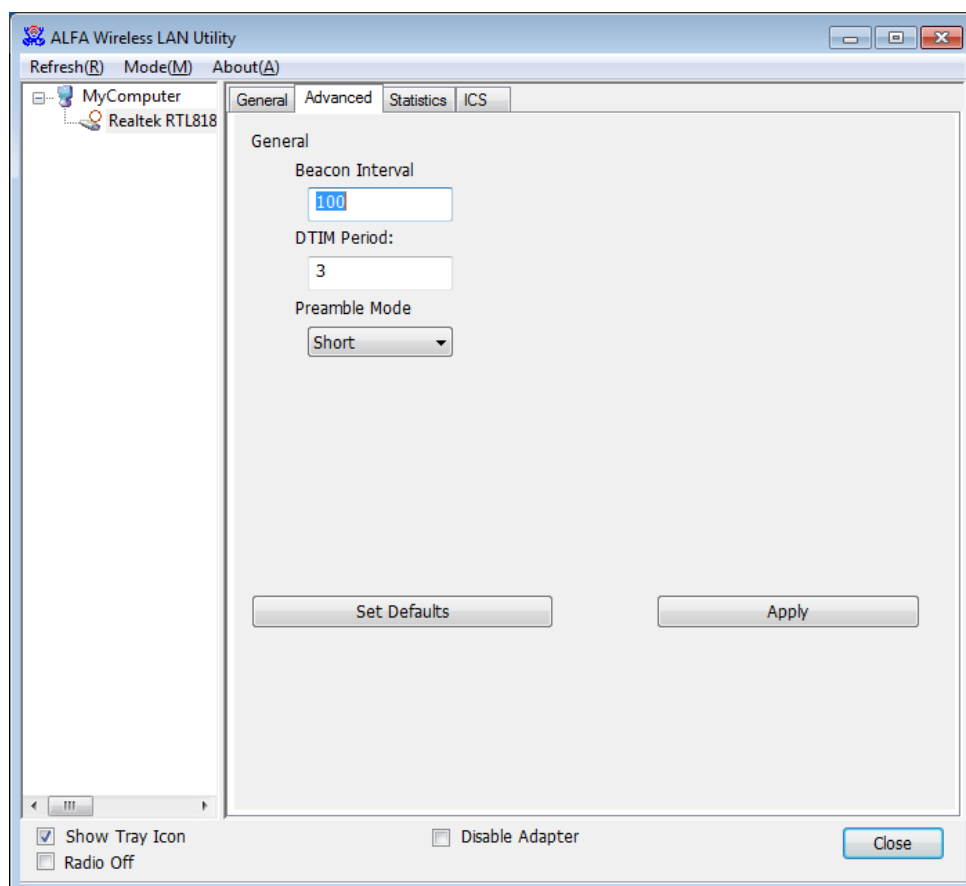
After configuring the adapter in AP mode, this **"General"** page shows up, which shows the general information of this AP.

- SSID:** The SSID (network name) of the wireless network constructed by this AP.
- BSSID:** The MAC address of this AP
- Config:** Click this button to change configurations to this AP
- Association Table:** Shows the information of the devices that connects to the AP including their MAC addresses and the time that they connected with this device.



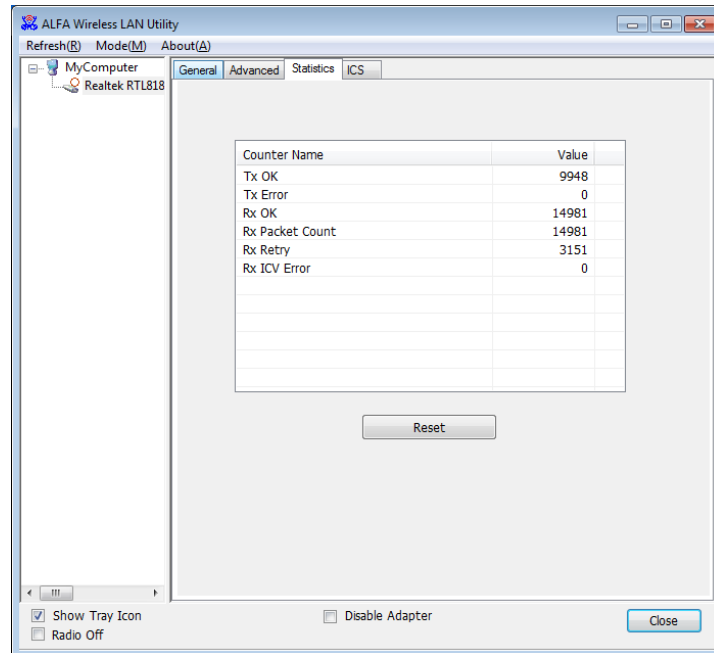
Advanced

- Beacon Interval:** Define the interval between beacons from 20~1000
- DTIM Period:** Set the DTIM period between 1~255
- Preamble Mode:** Click the drop list to select the preamble to be long, short or auto
- Set Defaults:** Click this button to restore the settings above to default
- Apply:** Click this button to execute changes.



Statistics

The **"Statistics"** tab shows the transmission activity record. Clicking the **"Reset"** button and recounts the values from zero.



ICS (Internet Connection Sharing)

This page allows users to select the adapter to connect to the public network.

Please click on the device that are used for connecting to the public network and click the "Select" button, and then click the "Apply" button to execute.

