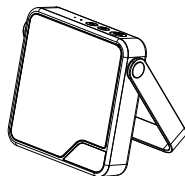


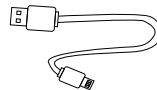
User Manual

What's in the box

1



Speaker with hook 1pc



USB cable 1pc



User manual 1pc

Key functions

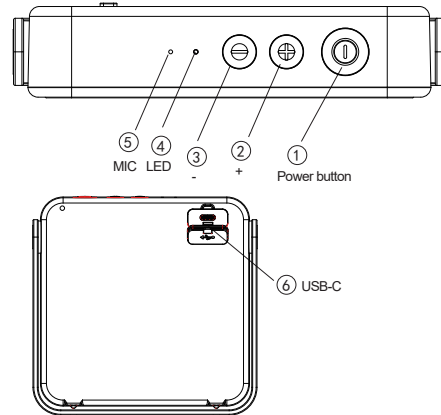
2

- 1.Power on/off: Single click to power on/off
- 2.Play/Pause: Double click to play/pause the music
- 3.Call/answer :When an incoming call,one click will answer or hang up, press and hold to reject the call.
- 4.Paring mold:hold 2s
5. -: volume down-single click,Previous track-hold 2s
6. +: volume up-single click,next track-hold 2s
- 7.siri:3 click
- 8.TWS mode:hold power button for 2 seconds and click the - at the same time (Bule light slow flash)
- 9.TWS off:5 click
- 10.LED light display:
Power on:Blue Flashing,ready for bluetooth paring.
Paired:Blue led off
Play mode:Light Continuous blue
Charging:RED light keeps on while charging,off while charging completed.
- 11.Tws on:Bule light slow flash
- 12.While Max /minium volume,you can hear a prompt tone

Notes:

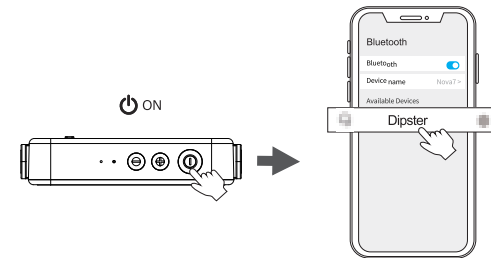
- 1.Charging with DC5V/1A adaptor or USB Cable
- 2.While max/minium volume,you can hear a prompt tone

3



Bluetooth Connection

4



1. Turn on the speaker, you will hear the boot
2. After open the phone Bluetooth, Click the "Dipster" to pairing

Notes:

- 1.If it is not paired for 15 minutes after booting, it will shut down.
When low battery,you can hear the prompt tone then the speaker will power off automatically
- 2.If Apple users feel that the volume is low, you can turn off this setting on the phone(Settings-Sounds & Haptics-Headphone Safety-Reduce Loud Sounds)

Specifications

9

Specifications

Speaker Type	Waterproof bluetooth wireless speaker
Speaker system	Stereo
Dimensions	131*125*28mm
Weight	292g
Driver	4Ω 5W φ50mm
Audio Playtime	Approx 10 hours(@50-60% Volume)
BT Version	V5.3
Rated Power	5 Watts
Power Supply	Built-in 3.7V 1800mAh Lithium Battery
Charging Time	Approx 2.5 hours(USB C)
IPX rate	IPX7
Frequency Response	100-20KHZ
Range	up to 10m
Input power:	DC 5V/1A
Built-in Microphone	

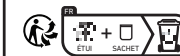
Safety Instructions

6

1. Keep the product away from extremely hot and cold environments, it will damage the battery and circuit.
2. Avoid liquid immersion into the product.
3. Do not disassemble the product.
4. Do not use concentrated chemical products or detergents to clean the product.
5. Use only 5V/1A power supply. Connecting the power supply voltage too high may cause serious damage.
6. Do not randomly discard or place the product near fire or high temperature to avoid the danger of explosion.



Made in China



FCC statement

7

This device complies with part 15 of the FCC Rules. Operation is subject to the following two conditions: (1) this device may not cause harmful interference, and (2) this device must accept any interference received, including interference that may cause undesired operation.

Any changes or modifications not expressly approved by the party responsible for compliance could void the user's authority to operate the equipment.

NOTE: This equipment has been tested and found to comply with the limits for a Class B digital device, pursuant to Part 15 of the FCC Rules. These limits are designed to provide reasonable protection against harmful interference in a residential installation. This equipment generates, uses and can radiate radio frequency energy and, if not installed and used in accordance with the instructions, may cause harmful interference to radio communications. However, there is no guarantee that interference will not occur in a particular installation. If this equipment does cause harmful interference to radio or television reception, which can be determined by turning the equipment off and on, the user is encouraged to try to correct the interference by one or more of the following measures:

- Reorient or relocate the receiving antenna.
- Increase the separation between the equipment and receiver.
- Connect the equipment into an outlet on a circuit different from that to which the receiver is connected.
- Consult the dealer or an experienced radio/TV technician for help.

The device has been evaluated to meet general RF exposure requirement. The device can be used in portable exposure condition without restriction