

J601 User Manual

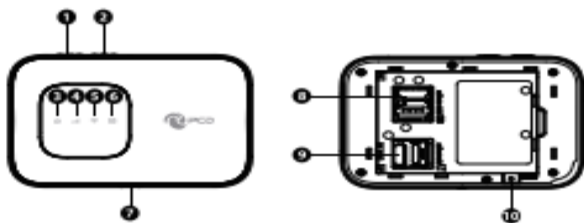
Interface



- **KEY Definition:**

key	Illustrate
1 Power key	Long press over 5 seconds to power on and long press to power off
2 WPS key	Press to active the WPS
7 USB port	Insert USB into LAN port
8 SIM card Slot	Insert SIM card
9 SD card Slot	Insert SD card
10 Reset	The Reset button is on the opposite side of the machine. If you forget Administrator password or Wireless network key, you can press the Reset key to restore factory default settings.

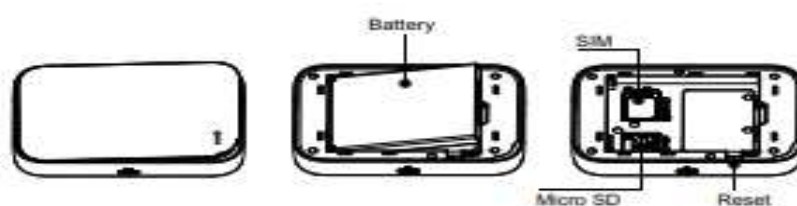
- **LED Indication Definition:**



<i>Indicator</i>	<i>Color</i>	<i>Working Status</i>	
3 Power LED	Green	Solid: booting up the device	Blink: Turn on-0.5s
	Blue	Solid: Battery High(100%-60%) or Charge Completed	
	Amber	Solid: Battery Middle (60%-15%)	
	Red	Solid: Battery too low nearly shut down (<15%)	
4 Signal LED	Blue	Blink: Register to LTE (not connect)	
		Solid: Connected to LTE network	
	Green	Blink: Register to 3G (not connect)	
		Solid: Connected to 3G network	
	Purple	Blink: Register to 2G (not connect)	
		Solid: Connected to 2G network	
5 Wi-Fi LED	Blue	Solid: No Client	Blink: Turn on-0.2s
		Blink: Client is activated	
		Blink: WPS is active	
6 SMS LED	Blue	Blink: New SMS	Blink: Turn on-0.5s

Installation

Follow the diagram to install the SIM card and SD card



Tips: Always switch the device off and disconnect the charger before removing the battery.

1. Remove the back cover and battery;

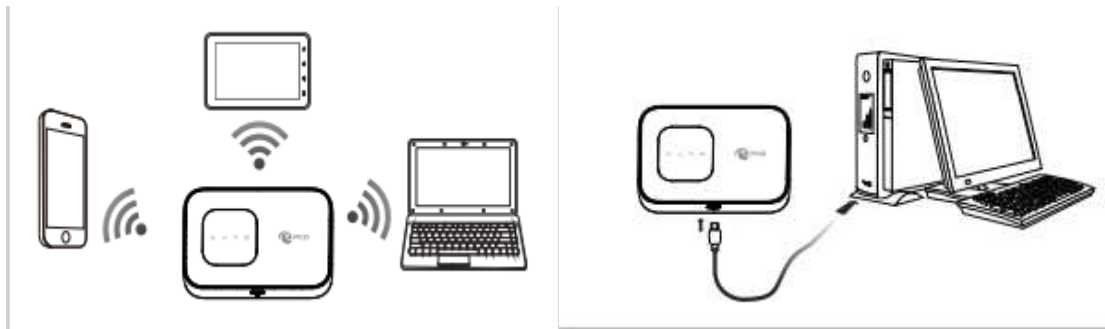
2. Insert the SIM card and SD card. Ensure that the contact area on the card is facing down and that the beveled corner on the card is facing the beveled corner on the holder.
3. Align the battery contacts with the battery compartment connectors, and insert the battery. Replace the back cover lastly.

J601 Usage

J601 support 4G/3G/2G networks. Insert the SIM card, Wi-Fi devices and the computer can access the Internet through J601, enjoy high-speed network services. Smart phones, tablet computers, game consoles and other Wi-Fi devices can be connected with the J601 Wi-Fi connection for Internet access.

Computers & laptops etc. may be connected to the J601 via USB cable for Internet Access.

J601 computer for the first time via a USB connection, you need to follow the prompts to install the driver



Wi-Fi wireless Internet access

In order for a Wi-Fi device to establish a connection with the J601 for the first time, you will need to select the J601SSID (Wi-Fi name) & enter the relevant Wi-Fi password, which you may find in the following ways:

Method one: on the nameplate view the default SSID and Wi-Fi passwords



Method Two: Login management page view

1. Computer, open your browser, input <http://192.168.1.1> and enter.

- The default Account is ClaroADM
- The default Password is Adm@XXXX (XXXX are the 2.4G Mac' s last 4-digits)

Enter the Account and Password, login administration pages



2. Enter the Wi-Fi menu , view the default SSID and Wi-Fi password.

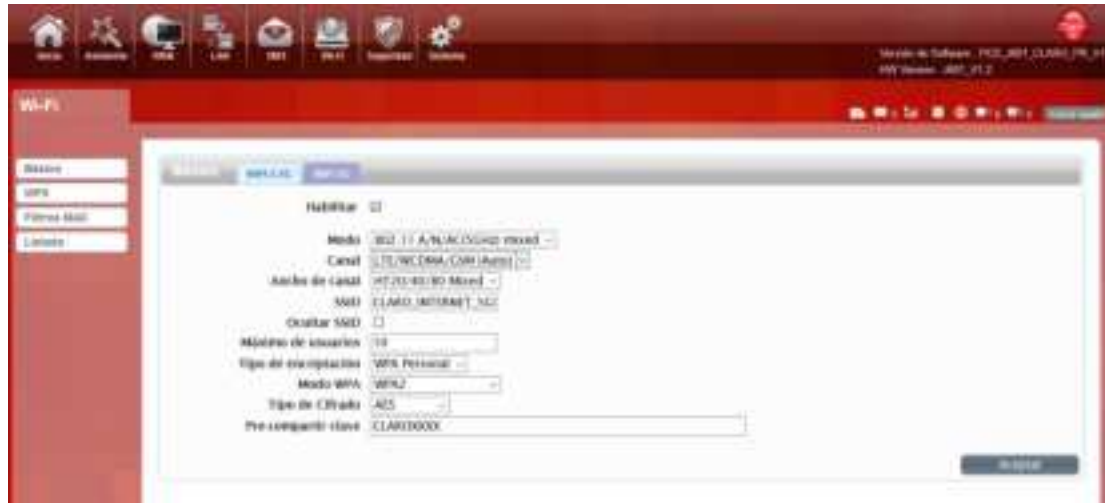
The default 2.4G SSID: CLARO_INTERNET_XXX (Where XXX are the last 3 digits of 2.4 MAC Address), and SSID

password: CLAROXXXX (Where XXXX are the last 4 digits of 2.4 GMAC Address)

The default 5G SSID: CLARO_INTERNET_5GHz_XXX (Where XXX are the last 3 digits of 5G MAC Address), and SSID

password: CLAROXXXX (Where XXXX are the last 4 digits of 5G MAC Address)



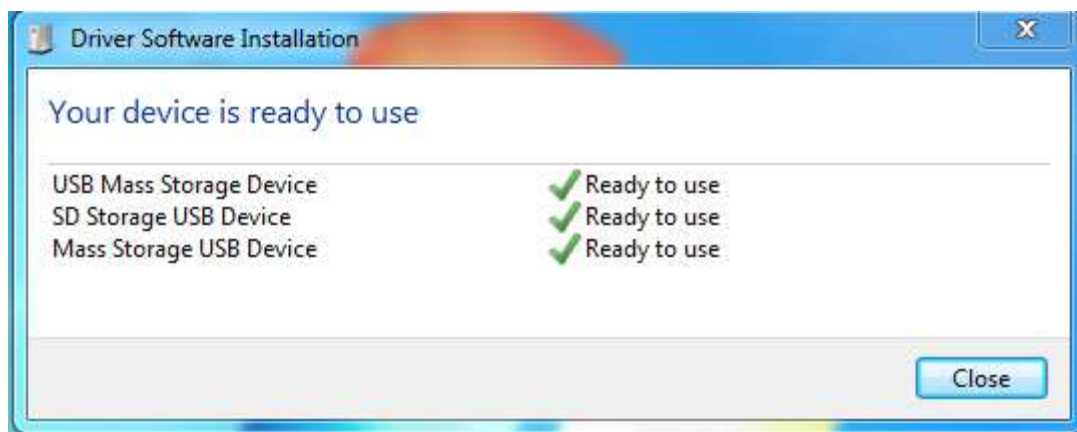


★Recommend that you start using J601 administration pages after setting a convenient landing memorizing SSID and a higher safety factor Wi-Fi passwords


Install the driver and connecting the device

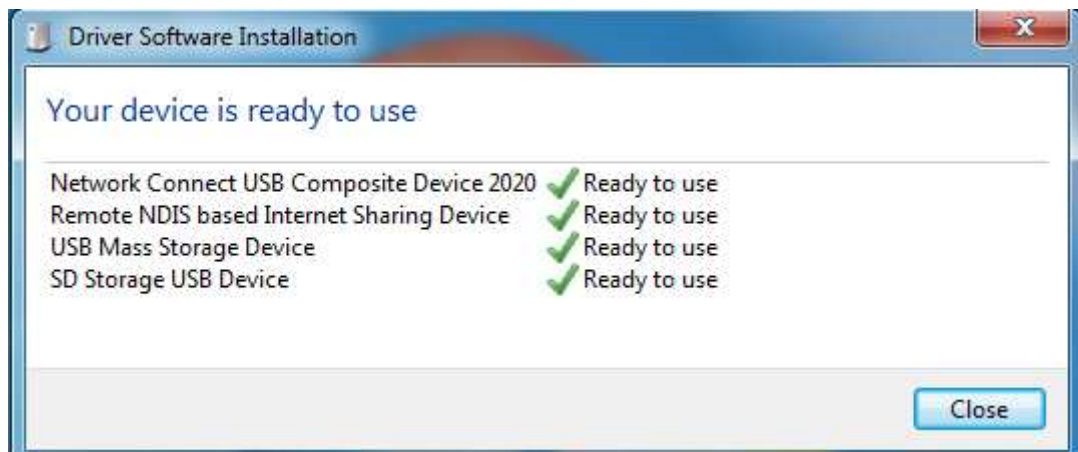
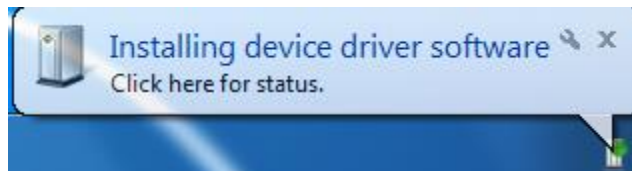
USB Connection: Windows 7 for example

1. Keep J601 powering on, Plug the device into your computer, it will shows like the following pictures step by step.

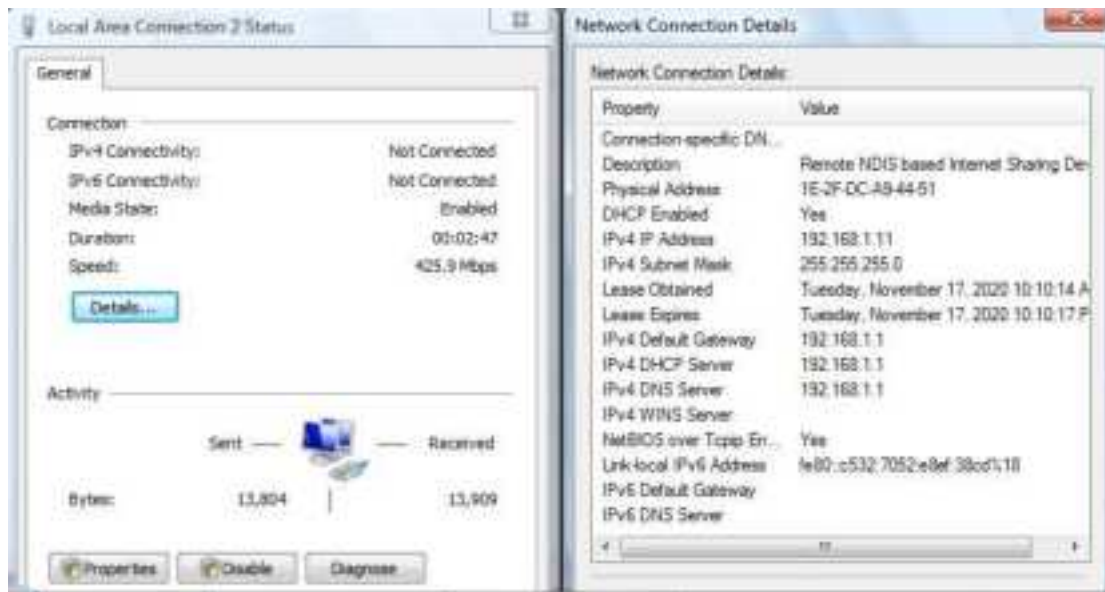




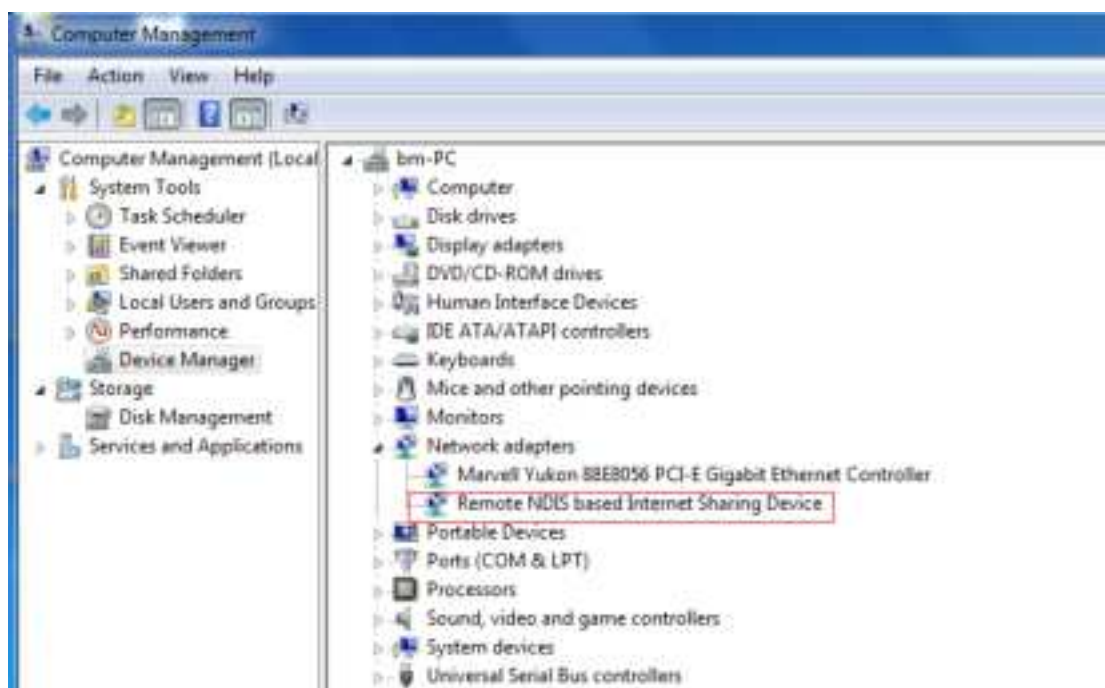
2. Double-click the  Run StartModem.exe, wait for the installation to complete



3. Check the network card is installed correctly, like the following pictures



Or,



Establish Wi-Fi connection: you must ensure that the computer is equipped with a wireless network card. If the computer showed the presence of Wi-Fi connectivity, the wireless LAN is available. Otherwise, you need to check your wireless network card is working properly. (The following will be 2.4G Wi-Fi as an example)

1. In the Wi-Fi list, select the 2.4G SSID or 5G SSID consistent with J601 Wi-Fi, click Connect

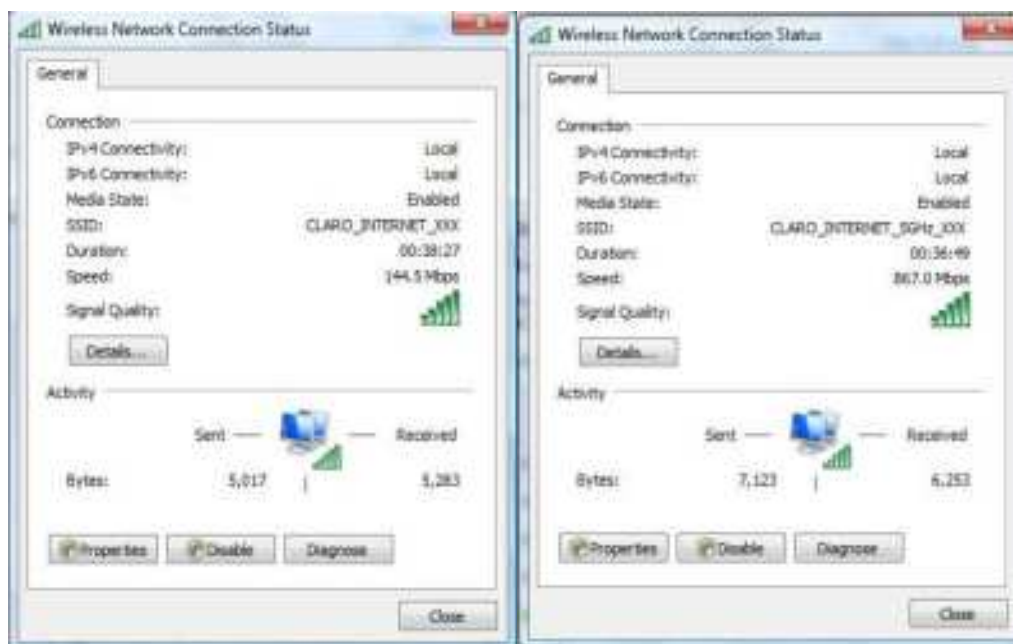


2. Enter the correct 2.4G or 5G Wi-Fi password, click Connect.

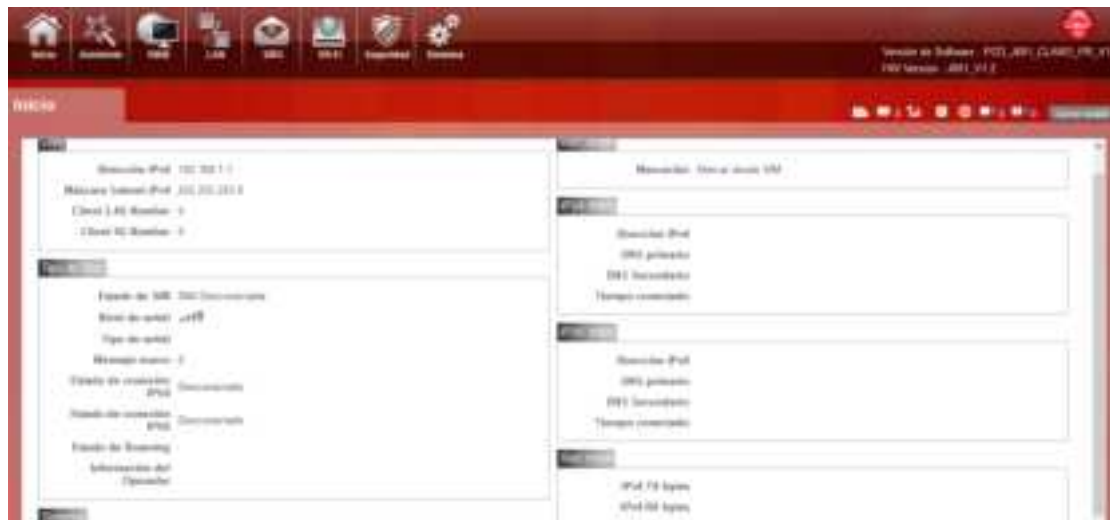




3. Wait a moment, Wi-Fi connection is displayed next to the name, Wi-Fi connection is successful



●Home



First part of the main display settings and network status information, such as iPad dress, SIM card status, type and quality of the network signal, whether it is roaming, with or without a new message, and traffic statistics, and system uptime, and so on.

Of course, all the menus you see are in Spanish, because the default language is customized.

●Wizard





You can quickly change the Router Gateway step by step, first set the APN, then change the 2.4G SSID and 5G SSID

Modify 2.4G SSID and Wi-Fi password and 5G SSID and Wi-Fi password. At last the Device will restart automatically when you click the confirm button.

●WAN

1. Connection



Preferred Cellular Network:

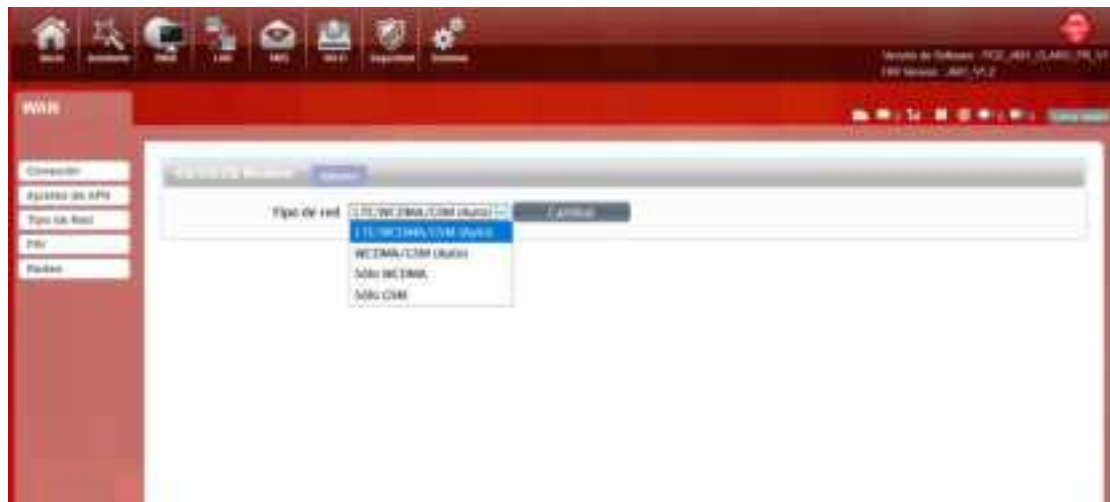
Select the Auto Mode, after you turn on J601 without additional operations, the device will automatically connect to the network; select the Manual Mode, you need to manually connect to the network after opening J601 management page.

2. APN Setting

You can customize the network configuration or manually add the new APN and set defaulting.



3. Tipo de Red



There are four types of networks can be choose: LTE/WCDMA/GSM is Customer customization, and WCDMA/GSM (Auto) , and WCDMA Only is using only 3G,GSM Only is using only 2G.

4. PIN



Open your PIN, if you reboot the device, you need to login management page, and the page will prompted to enter the correct PIN code, you can use the SIM card. PIN / PUK code supplied with the SIM card provided by your carrier, please consult your carrier.

●LAN

1. LAN



We can change IP address in this page.

2. DHCP

DHCP Mode: Select the server mode, the device can be done using a DHCP server; choose none, which is off the server function.

Start / End IP address: Changing DHCP assigned IP and IP segments.

Lease Time: Each is assigned a time to use the IP



Leased Hosts: J601 each wireless device list and USB device can view the Host name, MAC Address, IP

Address, information about the Remaining Time.

●SMS

When using SIM card to access network, you could also send text messages at the time. You can send, receive, reply, forward, and save test messages. You can send 10 text messages at the same time, SMS number intervals with a semicolon. Also you can setting the storage location of messages, and so on. We can operating the SMS in this page.



●Wi-Fi

1. Basic



We can setting the 2.4GWi-Fi configuration in this page, like B/G/N mode, Channel, SSID, Wi-Fi KEY and so on.



You can also control the opening and closing of 5GWi-Fi, and set up the Wi-Fi Channel .The 5GWi-Fi of J601 supports

802.11 A/N/AC Mixed protocol. We set the Channel Width to reach HT20/40/80 Mixed. The highest 5GWIFI rate can reach 867Mbps.

2. WPS



You can click the drop-down box and select 2.4G WPS or 5g WPS as the current default, and click the change button to confirm, Then You can use WPS function.

J601 supports two kinds of WPS authentication, PBC and PIN. Default is PBC authentication. (The following will be 2.4GWi-Fi as an example)

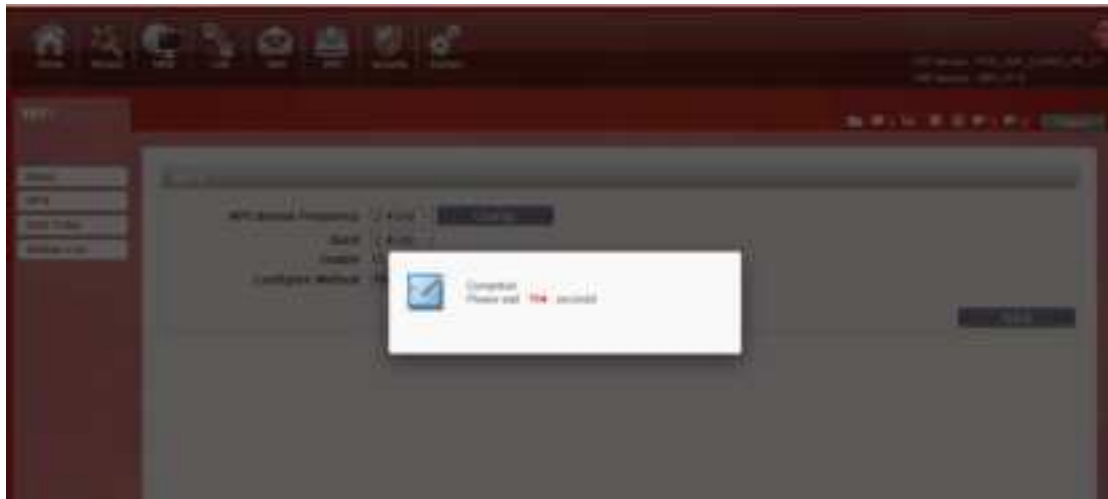
WPS PBC authentication:



If device Wi-Fi Enabled, device supports WPS (Wi-Fi Protected Setup) and you have forgotten or do not wish to enter your password to connect to your J601, you may use the following available procedures for quick access to Wi-Fi.

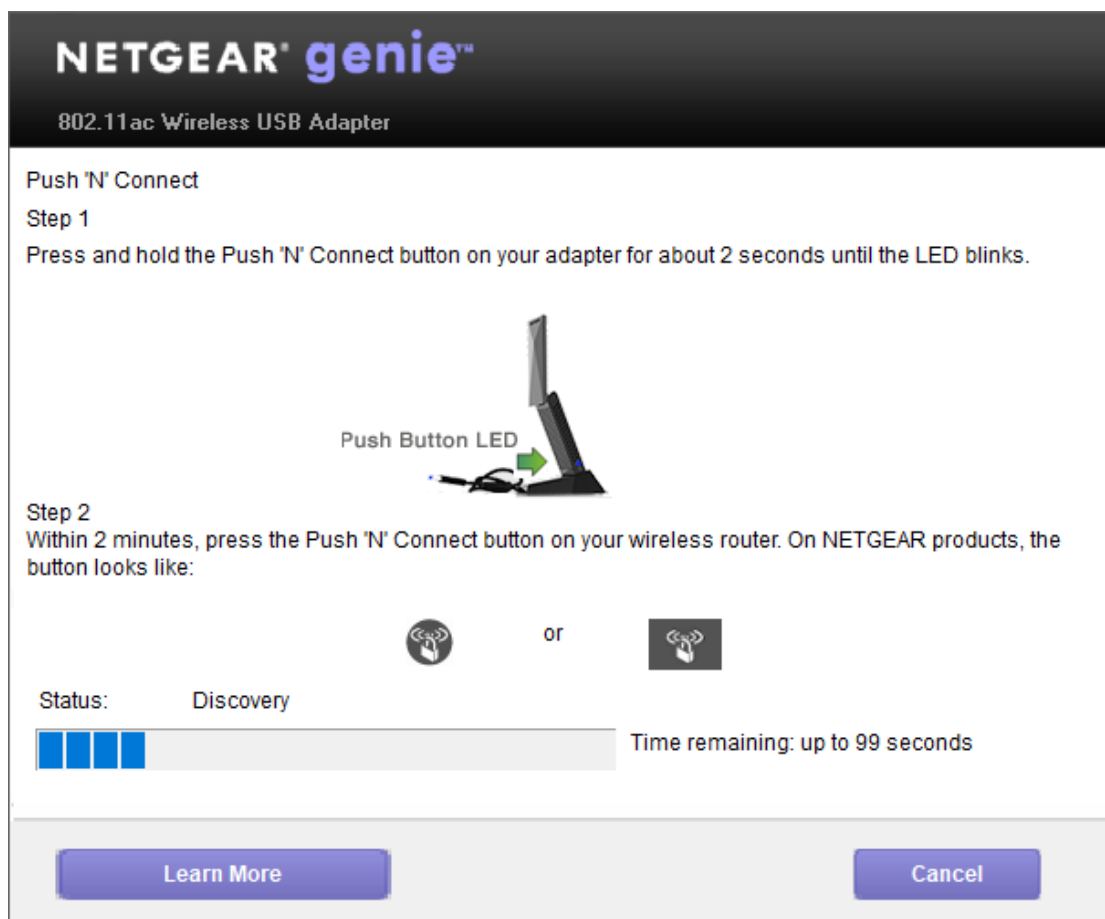
Open the WPS:

WPS can be opened by two methods. The first method is, enter the management interface page, press the "Apply" button, and open the WPS. It will be continue 120 seconds. Like the following picture.



Using WPS to connecting the J601 (Computer for example):

You can press the WPS button on the wireless device or click the PBC button if your wireless network adapter also supports WPS authentication. Waiting for a moment, it will be prompted to connect successfully.



Or

Select the SSID of the device and manual input Wi-Fi Key and connect it. Then you can see like the following picture.



You can choose wifi-2.4G MAC Filter or 5G MAC Filter, and then the details are as follows:

Deny list Stations: If you add the computers or wireless devices MAC address into the list, it can prohibiting the computers or wireless devices connect to the J601. The computers or wireless devices MAC address which are not in the list can able to connect to J601.

Allow list Stations: Opposite with Deny list Stations. It only allows the devices in the list to connect to J601, other wireless devices are unable to connect to the J601.

Disable: It means close the function of the MAC Address Filter.

4. Station List



Show the information of wireless devices which are connected to the 2.4G Wi-Fi list and 5G Wi-Fi list. It shows MAC address and IP address.

●Security





3.DMZ

Receive all the data from external network interface forwarded to “DMZ IP address”

If an application has trouble working from behind the router, you can expose one computer to the Internet and run the application on that computer.

Note: Placing a computer in the DMZ may expose that computer to a variety of security risks. Use of this option is only recommended as a last resort.

DMZ Host: Specify the IP address of the computer on the LAN that you want to have unrestricted Internet communication.



●System

1. About

J601 displays some basic information, such as device name, soft firmware version, IMEI, HW version.



2. TR069

The menu shows custom parameters. It is the communication between CPE and ACS. CPE can use this agreement to complete the necessary actions of service opening, function setting, file uploading and downloading, system testing and so on.



3. Configuration



Restore the factory settings, all of the personal configuration will be deleted, all configuration pages will be restored to the factory defaults.

5. Firmware Upgrade

The page allows you to upgrade the router's firmware.

Remote Server: You can on the routing connection network , check whether there is a new version, if there is a new version was detected, it can automatically upgrade in the background.

Manual: You can download updates to the local computer, and then choose to download in the page of upgrade file to upgrade.



Select the file to update the software

5. Password



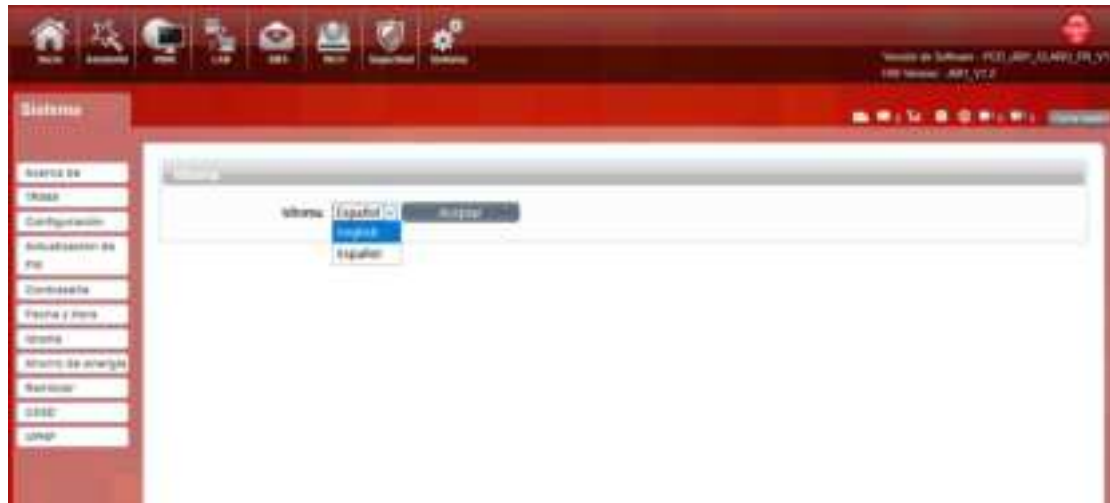
Modify the login password for administrator interface. Also you can set the time to logout the automatically.

6. Date and Time



You can synchronize the time with the host, you can also select the time zone

7. Language



You can change the UI language in this page.

8. Power saving



You can change the time of sleep mode or deep sleep mode. In this page you also can disable the Power saving function.

Sleep mode: System will enter into the sleep mode, when there is no Wi-Fi client connected to this device.

Deep sleep mode: System will enter into deep sleep mode, when there is no Internet access and no Wi-Fi client connected to this device.

9. Reboot

You can restart the device.



10.USSD

It is a new interactive data service based on GSM network. When you use the phone's keyboard to type in numbers or symbols that are pre-defined for the network.

You can edit the content on the left, and the results will be returned to the right later.



11.UPNP

UPNP means Universal Plug and Play, it is to make all kinds of devices in home network and company network connect with each other seamlessly, and simplify the implementation of related networks.

You can check box and activate the function.



Safety Warning

Caution:RISK OF EXPLOSION IF BATTERY IS REPLACED BY AN INCORRECT TYPE.DISPOSE OF USED BATTERIES ACCORDING TO THE INSTRUCTIONS

FCC Warning:

This equipment has been tested and found to comply with the limits for a Class B digital device, pursuant to part 15 of the FCC Rules. These limits are designed to provide reasonable protection against harmful interference in a residential installation. This equipment generates, uses and can radiate radio frequency energy and, if not installed and used in accordance with the instructions, may cause harmful interference to radio communications. However, there is no guarantee that interference will not occur in a particular installation. If this equipment does cause harmful interference to radio or television reception, which can be determined by turning the equipment off and on, the user is encouraged to try to correct the interference by one or more of the following measures:

- Reorient or relocate the receiving antenna.
- Increase the separation between the equipment and receiver.
- Connect the equipment into an outlet on a circuit different from that to which the receiver is connected.
- Consult the dealer or an experienced radio/TV technician for help.

Caution: Any changes or modifications to this device not explicitly approved by manufacturer could void your authority to operate this equipment.

This device complies with part 15 of the FCC Rules. Operation is subject to the following two conditions: (1) This device may not cause harmful interference, and (2) this device must accept any interference received, including interference that may cause undesired operation.



Specific Absorption Rate (SAR) information:

This equipment meets the government's requirements for exposure to radio waves. The guidelines are based on standards that were developed by independent scientific organizations through periodic and thorough evaluation of scientific studies. The standards include a substantial safety margin designed to assure the safety of all persons regardless of age or health. FCC RF Exposure Information and Statement the SAR limit of USA (FCC) is 1.199 W/kg averaged over one gram of tissue. Device types: equipment (FCC ID: 2ALJJ601) has also been tested against this SAR limit. This device was tested for typical body-worn operations with the back of the equipment kept 10mm from the body. To maintain compliance with FCC RF exposure requirements, use accessories that maintain a 10mm separation distance between the user's body and the back of the equipment. The use of belt clips, holsters and similar accessories should not contain metallic components in its assembly. The use of accessories that do not satisfy these requirements may not comply with FCC RF exposure requirements, and should be avoided.

This device is restricted to indoor use where operated in the European and USA.Canada Community using frequency in 5150MHz ~ 5250MHz to reduce the potential for interference.