

---

# FCC Test Report

---

Report No.: AGC05426151101FE07

**FCC ID** : 2ACCL-MAXPLUS55  
**APPLICATION PURPOSE** : Original Equipment  
**PRODUCT DESIGNATION** : MOBILE PHONE  
**BRAND NAME** : IONE  
**MODEL NAME** : MAX PLUS 5.5  
**CLIENT** : IMAXX INTERNATIONAL INC.  
**DATE OF ISSUE** : Dec.23, 2015  
**STANDARD(S)** : FCC Part 15 Rules  
**REPORT VERSION** : V1.0

Attestation of Global Compliance (Shenzhen) Co., Ltd



**CAUTION:**

This report shall not be reproduced except in full without the written permission of the test laboratory and shall not be quoted out of context.



### Report Revise Record

Report Version	Revise Time	Issued Date	Valid Version	Notes
V1.0	/	Dec.23, 2015	Valid	Original Report

## TABLE OF CONTENTS

<b>1. VERIFICATION OF CONFORMITY .....</b>	<b>4</b>
<b>2. SYSTEM DESCRIPTION .....</b>	<b>5</b>
<b>3. MEASUREMENT UNCERTAINTY.....</b>	<b>5</b>
<b>4. PRODUCT INFORMATION .....</b>	<b>6</b>
<b>5. SUPPORT EQUIPMENT.....</b>	<b>7</b>
<b>6. TEST FACILITY .....</b>	<b>8</b>
<b>7. FCCLINE CONDUCTED EMISSION TEST .....</b>	<b>10</b>
7.1. LIMITS OF LINE CONDUCTED EMISSION TEST .....	10
7.2. BLOCK DIAGRAM OF TEST SETUP .....	10
7.3. PROCEDURE OF LINE CONDUCTED EMISSION TEST .....	11
7.4. TEST RESULT OF LINE CONDUCTED EMISSION TEST .....	12
<b>8. FCC RADIATED EMISSION TEST.....</b>	<b>14</b>
8.1. LIMITS OF RADIATED EMISSION TEST .....	14
8.2. BLOCK DIAGRAM OF TEST SETUP .....	14
8.3. PROCEDURE OF RADIATED EMISSION TEST .....	15
8.4. TEST RESULT OF RADIATED EMISSION TEST .....	16
<b>APPENDIX A: PHOTOGRAPHS OF TEST SETUP .....</b>	<b>18</b>
<b>APPENDIX B: PHOTOGRAPHS OF EUT .....</b>	<b>20</b>

## 1. VERIFICATION OF CONFORMITY

<b>Applicant</b>	IMAXX INTERNATIONAL INC.
<b>Address</b>	9024 KENNEDY DR DES PLAINESDES PLAINES, IL 60016United States
<b>Manufacturer</b>	IMAXX INTERNATIONAL INC.
<b>Address</b>	9024 KENNEDY DR DES PLAINESDES PLAINES, IL 60016United States
<b>Product Designation</b>	MOBILE PHONE
<b>Brand Name</b>	IONE
<b>Test Model</b>	MAX PLUS 5.5
<b>Date of test</b>	Dec.08, 2015 to Dec.10, 2015
<b>Deviation</b>	None
<b>Condition of Test Sample</b>	Normal
<b>Report Template</b>	AGCRT-US-IT/AC

The above equipment was tested by Dongguan Precise Testing Service Co., Ltd. for compliance with the requirements set forth in the FCC Rules and Regulations Part 15, the measurement procedure according to ANSI C63.4:2009. This said equipment in the configuration described in this report shows the maximum emission levels emanating from equipment are within the compliance requirements.

The test results of this report relate only to the tested sample identified in this report.

Tested By

*Matt Zhang*

Matt Zhang(Zhang Liang)

Dec.23, 2015

Reviewed By

*Bart Xie*

Bart Xie(Xie Xiaobin)

Dec.23, 2015

Approved By

*Solger Zhang*

Solger Zhang(Zhang Hongyi)  
Authorized Officer

Dec.23, 2015

## 2. SYSTEM DESCRIPTION

### EUT test procedure:

1. Connect EUT and peripheral devices (PC) through USB port.
2. Power on the EUT, use the software to transfer data between EUT and PC.
3. Make sure the EUT operates normally during the test.

### Test Mode

TEST MODE DESCRIPTION		
NO.	TEST MODE DESCRIPTION	WORST
1	USB (connection for data transferring)	V
Note: 1.V means EMI worst mode 2 .Other modes have been verified through VOC mode. 3. USB cable is provided by AGC-Lab.		

## 3. MEASUREMENT UNCERTAINTY

The uncertainty is calculated using the methods suggested in the “Guide to the Expression of Uncertainty in Measurement” (GUM) published by ISO.

Conducted measurement: +/- 2.75dB

Radiated measurement: +/- 3.2Db

### Summary Of Test Results

FCC Rules	Description Of Test	Result
§15.107	Conduction Emission	Compliant
§15.109	Radiated Emission	Compliant

#### 4. PRODUCT INFORMATION

Housing Type	plastics
Adapter Input	AC100-240V, 50-60Hz, 150mA
Adapter Output	DC5V, 1000mA

**I/O Port Information (☒Applicable ☐Not Applicable)**

I/O Port of EUT			
I/O Port Type	Q'TY	Cable	Tested with
USB Port	1	N/A	N/A
Earphone Port	1	1.0 m, unshielded	1

## 5. SUPPORT EQUIPMENT

Device Type	Manufacturer	Model Name	Serial No.	Data Cable	Power Cable
Notebook	Lenovo	B460	WB03928113	1	1.5m unshielded

**Note:** All the above equipment/cables were placed in worse case positions to maximize emission signals during emission test.

## 6. TEST FACILITY

<b>Site</b>	Dongguan Precise Testing Service Co., Ltd.
<b>Location</b>	Building D, Baoding Technology Park, Guangming Road2,Dongcheng District, Dongguan, Guangdong, China,
<b>FCC Registration No.</b>	371540
<b>Description</b>	The test site is constructed and calibrated to meet the FCC requirements in documents ANSI C63.4:2009.

### ALL TEST EQUIPMENT LIST

#### FOR RADIATED EMISSION TEST (BELOW 1GHZ)

Radiated Emission Test Site					
Name of Equipment	Manufacturer	Model Number	Serial Number	Last Calibration	Due Calibration
EMI Test Receiver	Rohde & Schwarz	ESCI	101417	July 4, 2015	July 3, 2016
Trilog Broadband Antenna (25M-1GHz)	SCHWARZBECK	VULB9160	9160-3355	July 4, 2015	July 3, 2016
Signal Amplifier	SCHWARZBECK	BBV 9475	9745-0013	July 4, 2015	July 3, 2016
RF Cable	SCHWARZBECK	AK9515E	96221	July 4, 2015	July 3, 2016
3m Anechoic Chamber	CHENGYU	966	PTS-001	June 6, 2015	June 5, 2016
MULTI-DEVICE Positioning Controller	Max-Full	MF-7802	MF780208339	N/A	N/A
Active loop antenna (9K-30MHz)	Schwarzbeck	FMZB1519	1519-038	June 6, 2015	June 5, 2016
Spectrum analyzer	Agilent	E4407B	MY46185649	June 6, 2015	June 5, 2016

#### FOR RADIATED EMISSION TEST (1GHZ ABOVE)

Radiated Emission Test Site					
Name of Equipment	Manufacturer	Model Number	Serial Number	Last Calibration	Due Calibration
EMI Test Receiver	Rohde & Schwarz	ESCI	101417	July 4, 2015	July 3, 2016
Horn Antenna (1G-18GHz)	SCHWARZBECK	BBHA9120D	9120D-1246	July 11, 2015	July 10, 2016
Spectrum Analyzer	Agilent	E4411B	MY4511453	July 4, 2015	July 3, 2016
Signal Amplifier	SCHWARZBECK	BBV 9718	9718-269	July 7, 2015	July 6, 2016
RF Cable	SCHWARZBECK	AK9515H	96220	July 8, 2015	July 7, 2016
3m Anechoic Chamber	CHENGYU	966	PTS-001	June 6, 2015	June 5, 2016



MULTI-DEVICE Positioning Controller	Max-Full	MF-7802	MF780208339	N/A	N/A
Horn Ant (18G-40GHz)	Schwarzbeck	BBHA 9170	9170-181	June 6, 2015	June 5, 2016

Conducted Emission Test Site					
Name of Equipment	Manufacturer	Model Number	Serial Number	Last Calibration	Due Calibration
EMI Test Receiver	Rohde & Schwarz	ESCI	101417	July 4, 2015	July 3, 2016
Artificial Mains Network	Narda	L2-16B	000WX31025	July 8, 2015	July 7, 2016
Artificial Mains Network (AUX)	Narda	L2-16B	000WX31026	July 8, 2015	July 7, 2016
RF Cable	SCHWARZBECK	AK9515E	96222	July 4, 2015	July 3, 2016
Shielded Room	CHENGYU	843	PTS-002	June 6,2015	June 5,2016

## 7. FCCLINE CONDUCTED EMISSION TEST

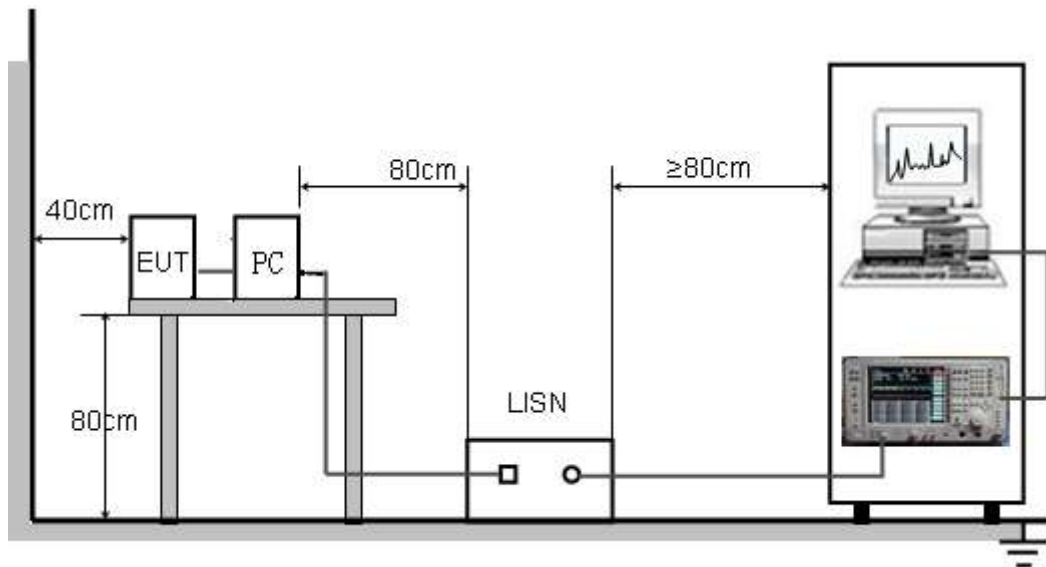
### 7.1. LIMITS OF LINE CONDUCTED EMISSION TEST

Frequency	Maximum RF Line Voltage	
	Q.P.( dBuV)	Average( dBuV)
150kHz-500kHz	66-56	56-46
500kHz-5MHz	56	46
5MHz-30MHz	60	50

**Note:**

1. The lower limit shall apply at the transition frequency.
2. The limit decreases linearly with the logarithm of the frequency in the range 0.15 MHz to 0.50MHz.

### 7.2. BLOCK DIAGRAM OF TEST SETUP



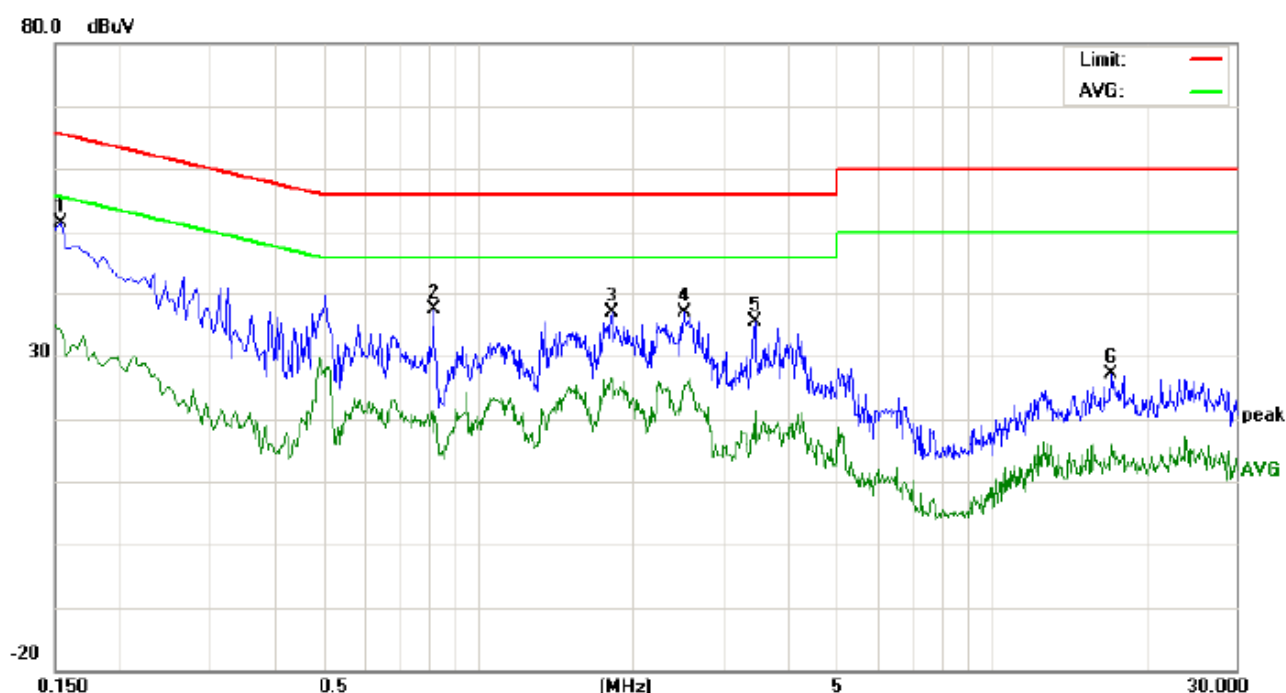
### 7.3. PROCEDURE OF LINE CONDUCTED EMISSION TEST

- (1) The equipment was set up as per the test configuration to simulate typical actual usage per the user's manual. When the EUT is a tabletop system, a wooden table with a height of 0.8 meters is used and is placed on the ground plane as per ANSI C63.4 (see Test Facility for the dimensions of the ground plane used). When the EUT is a floor-standing equipment, it is placed on the ground plane which has a 3-12 mm non-conductive covering to insulate the EUT from the ground plane.
- (2) Support equipment, if needed, was placed as per ANSI C63.4.
- (3) All I/O cables were positioned to simulate typical actual usage as per ANSI C63.4.
- (4) The EUT received DC5V power from PC with receive AC120V/60Hz power from a LISN.
- (5) The EUT test program was started. Emissions were measured on each current carrying line of the EUT using a spectrum Analyzer / Receiver connected to the LISN powering the EUT. The LISN has two monitoring points: Line 1 (Hot Side) and Line 2 (Neutral Side). Two scans were taken: one with Line 1 connected to Analyzer / Receiver and Line 2 connected to a 50 ohm load; the second scan had Line 1 connected to a 50 ohm load and Line 2 connected to the Analyzer / Receiver.
- (6) Analyzer / Receiver scanned from 150 kHz to 30MHz for emissions in each of the test modes.
- (7) During the above scans, the emissions were maximized by cable manipulation.
- (8) A scan was taken on both power lines, Line 1 and Line 2, recording at least the six highest emissions.
- (9) Emission frequency and amplitude were recorded into a computer in which correction factors were used to calculate the emission level and compare reading to the applicable limit. If EUT emission level was less -2dB to the A.V. limit in Peak mode, then the emission signal was re-checked using Q.P and Average detector.

The test data of the worst case condition (mode 1) was reported on the Summary Data page.

## 7.4. TEST RESULT OF LINE CONDUCTED EMISSION TEST

### LINE CONDUCTED EMISSION TEST-L



Site: Conduction

Phase: **L1**

Temperature: 22.9

Limit: FCC Class B Conduction(QP)

Power: AC 120V/60Hz

Humidity: 56.3 %

EUT: MOBILE PHONE

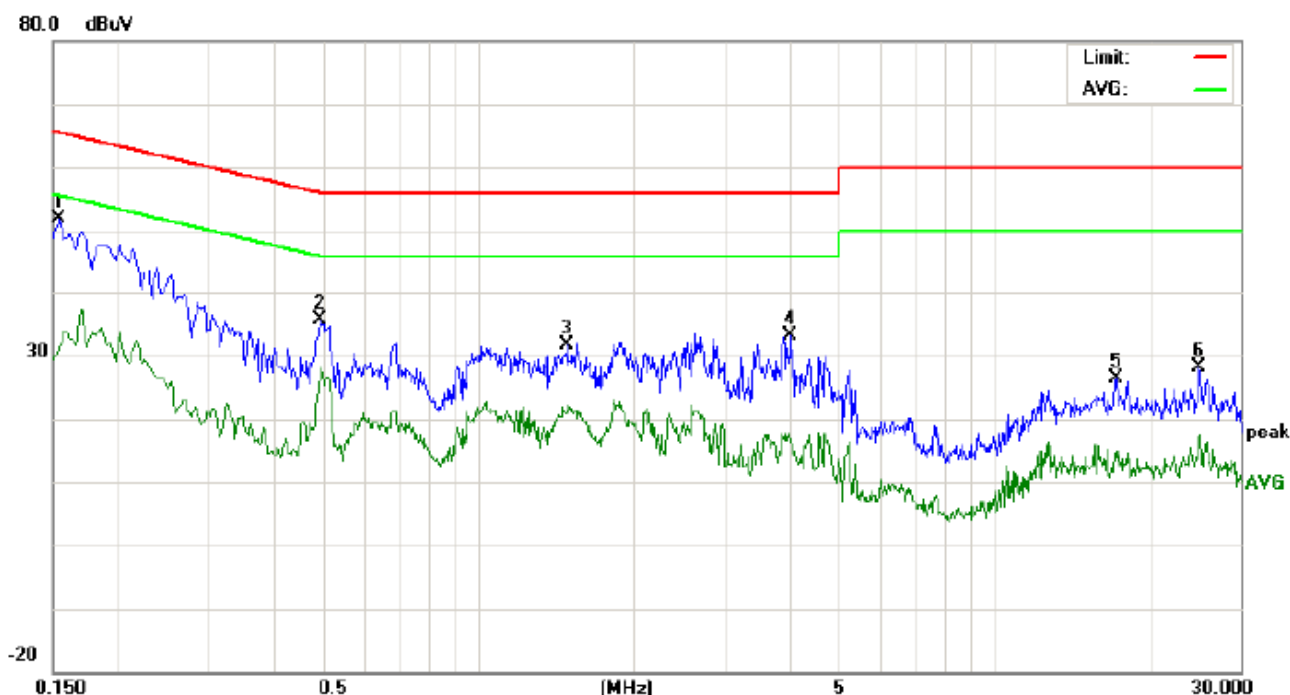
M/N: MAX PLUS 5.5

Mode: USB

Note:

No.	Freq. (MHz)	Reading_Level (dBuV)			Correct Factor dB	Measurement (dBuV)			Limit (dBuV)		Margin (dB)		P/F	Comment
		Peak	QP	AVG		Peak	QP	AVG	QP	AVG	QP	AVG		
1	0.1539	41.20		23.69	10.16	51.36		33.85	65.78	55.78	-14.42	-21.93	P	
2	0.8180	27.05		7.53	10.30	37.35		17.83	56.00	46.00	-18.65	-28.17	P	
3	1.8220	26.52		16.00	10.28	36.80		26.28	56.00	46.00	-19.20	-19.72	P	
4	2.5260	26.45		14.14	10.44	36.89		24.58	56.00	46.00	-19.11	-21.42	P	
5	3.4580	24.84		10.77	10.51	35.35		21.28	56.00	46.00	-20.65	-24.72	P	
6	17.1299	16.96		5.78	10.13	27.09		15.91	60.00	50.00	-32.91	-34.09	P	

# LINE CONDUCTED EMISSION TEST-N



Site: Conduction Phase: **N** Temperature: 22.9  
Limit: FCC Class B Conduction(QP) Power: AC 120V/60Hz Humidity: 56.3 %  
EUT: MOBILE PHONE  
M/N: MAX PLUS 5.5  
Mode: USB  
Note:

No.	Freq. (MHz)	Reading_Level (dBuV)			Correct Factor dB	Measurement (dBuV)			Limit (dBuV)		Margin (dB)		P/F	Comment
		Peak	QP	AVG		Peak	QP	AVG	QP	AVG	QP	AVG		
1	0.1539	41.65		20.98	10.16	51.81		31.14	65.78	55.78	-13.97	-24.64	P	
2	0.4940	25.19		16.32	10.40	35.59		26.72	56.10	46.10	-20.51	-19.38	P	
3	1.4900	21.20		11.81	10.38	31.58		22.19	56.00	46.00	-24.42	-23.81	P	
4	4.0420	22.75		6.35	10.41	33.16		16.76	56.00	46.00	-22.84	-29.24	P	
5	17.2099	16.20		4.83	10.13	26.33		14.96	60.00	50.00	-33.67	-35.04	P	
6	25.0540	18.00		6.91	10.12	28.12		17.03	60.00	50.00	-31.88	-32.97	P	

**RESULT: PASS**

## 8. FCC RADIATED EMISSION TEST

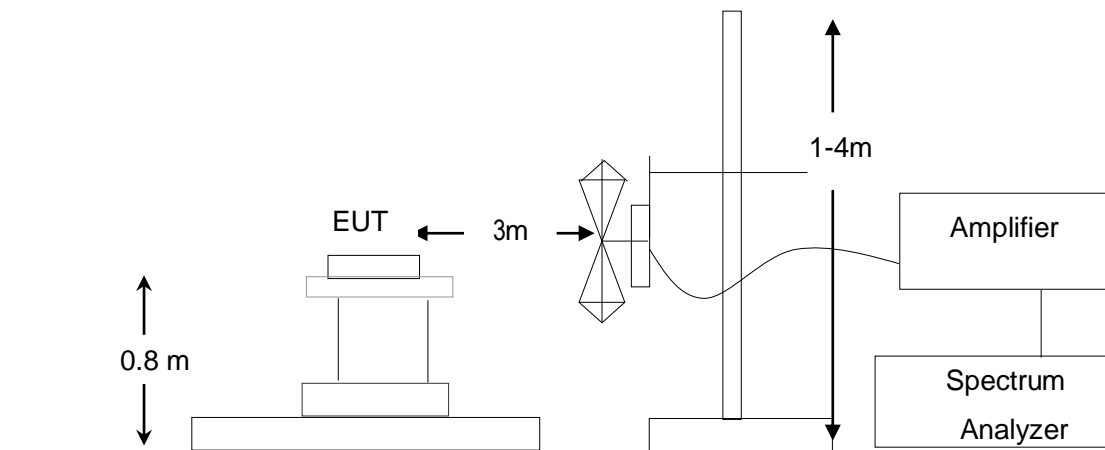
### 8.1. LIMITS OF RADIATED EMISSION TEST

Frequency (MHz)	Distance (m)	Maximum Field Strength Limit (dBuV/m/ Q.P.)
30~88	3	40.0
88~216	3	43.5
216~960	3	46.0
Above 960	3	54.0

Note: The lower limit shall apply at the transition frequency.

### 8.2. BLOCK DIAGRAM OF TEST SETUP

System Diagram of Connections between EUT and Simulators



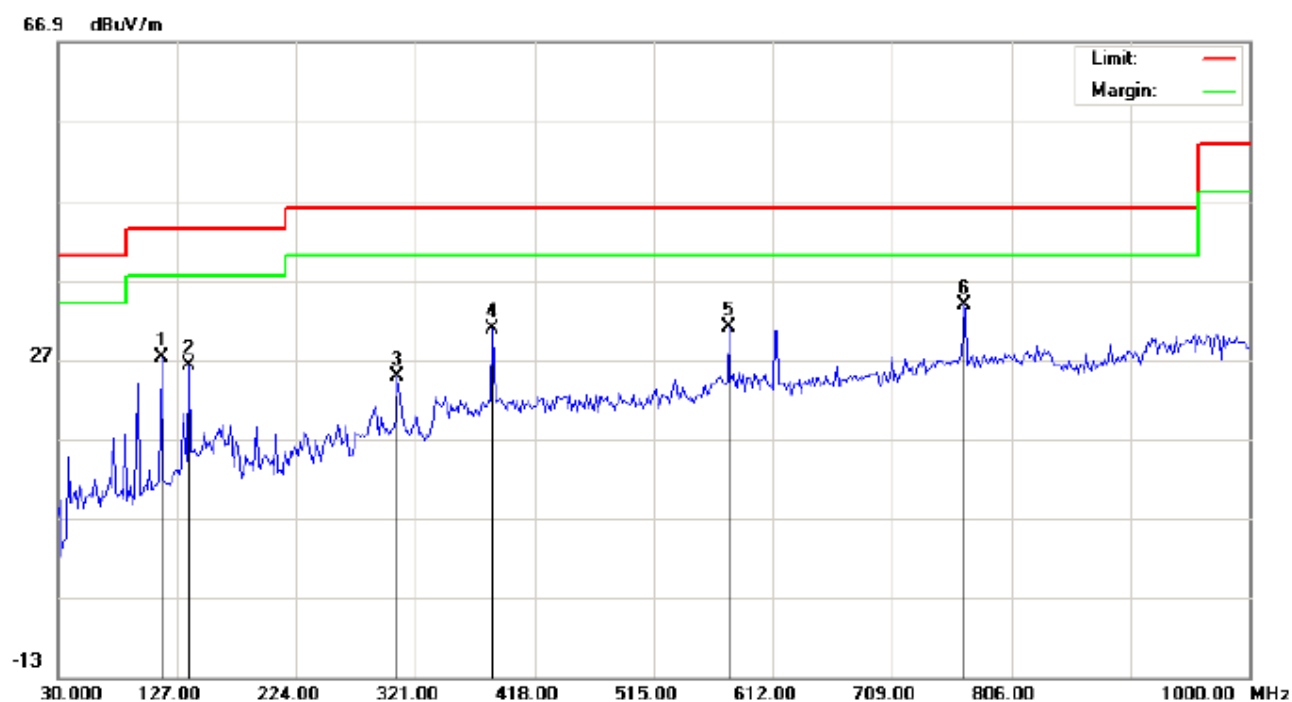
### **8.3. PROCEDURE OF RADIATED EMISSION TEST**

- (1) The equipment was set up as per the test configuration to simulate typical actual usage per the user's manual. When the EUT is a tabletop system, a wooden turntable with a height of 0.8 meters is used which is placed on the ground plane as per ANSI C63.4 (see Test Facility for the dimensions of the ground plane used). When the EUT is floor-standing equipment, it is placed on the ground plane which has a 3-12 mm non-conductive covering to insulate the EUT from the ground plane.
- (2) Support equipment, if needed, was placed as per ANSI C63.4.
- (3) All I/O cables were positioned to simulate typical actual usage as per ANSI C63.4.
- (4) The EUT received DC 5V power from PC with receive AC120V/60Hz power from socket under the turntable through a LISN.
- (5) The antenna was placed at 3 meter away from the EUT as stated in FCC Part 15. The antenna connected to the Analyzer via a cable and at times a pre-amplifier would be used.
- (6) The Analyzer / Receiver quickly scanned from 30MHz to 1000MHz. The EUT test program was started. Emissions were scanned and measured rotating the EUT to 360 degrees and positioning the antenna 1 to 4 meters above the ground plane, in both the vertical and the horizontal polarization, to maximize the emission reading level.
- (7) The test mode(s) were scanned during the test:
- (8) Recorded at least the six highest emissions. Emission frequency, amplitude, antenna position, polarization and turntable position were recorded into a computer in which correction factors were used to calculate the emission level and compare reading to the applicable limit and Q.P./Peak reading is presented.

The test data of the worst case condition (mode 1) was reported on the Summary Data page.

## 8.4. TEST RESULT OF RADIATED EMISSION TEST

Radiated Emission Test at 3m Distance-Horizontal



Site: site #1  
Limit: FCC Class B 3M Radiation  
EUT: MOBILE PHONE  
M/N: MAX PLUS 5.5  
Mode: USB  
Note:

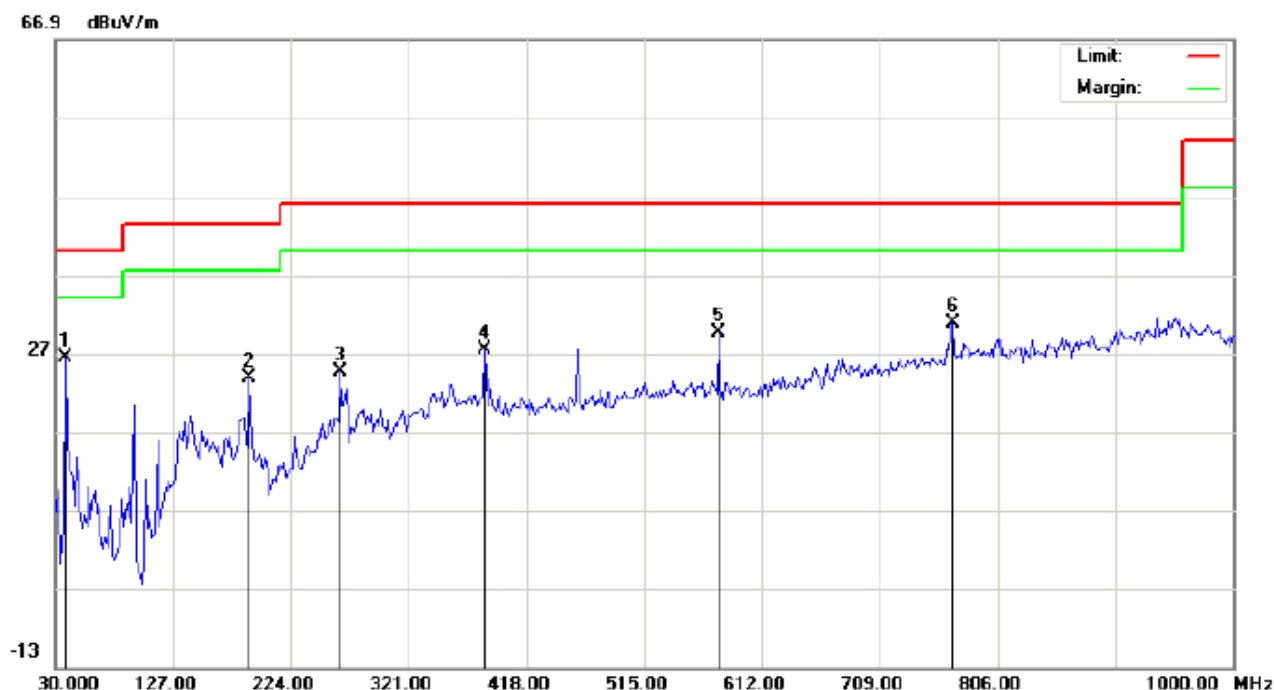
Polarization: **Horizontal**  
Power: AC 120V/60Hz  
Distance: 3m

Temperature: 26  
Humidity: 60 %

No.	Mk	Freq.	Reading	Factor	Measurement	Limit	Over	Detector	Antenna Height	Table Degree	Comment
		MHz	dBuV	dB/m	dBuV/m	dBuV/m	dB		cm	degree	
1		114.0667	15.75	11.45	27.20	43.50	-16.30	peak			
2		136.7000	11.61	14.65	26.26	43.50	-17.24	peak			
3		306.4500	8.96	15.84	24.80	46.00	-21.20	peak			
4		384.0500	11.92	18.96	30.88	46.00	-15.12	peak			
5		576.4333	7.87	23.14	31.01	46.00	-14.99	peak			
6	*	767.2000	6.94	26.87	33.81	46.00	-12.19	peak			



### Radiated Emission Test at 3m Distance-Vertical



Site: site #1 Polarization: **Vertical** Temperature: 26  
Limit: FCC Class B 3M Radiation Power: AC 120V/60Hz Humidity: 60 %  
EUT: MOBILE PHONE Distance: 3m  
M/N: MAX PLUS 5.5  
Mode: USB  
Note:

No.	Mk	Freq.	Reading	Factor	Measurement	Limit	Over	Detector	Antenna Height	Table Degree	Comment
		MHz	dBuV	dB/m	dBuV/m	dBuV/m	dB		cm	degree	
1	*	38.0833	20.01	6.39	26.40	40.00	-13.60	peak			
2		190.0500	12.35	11.52	23.87	43.50	-19.63	peak			
3		264.4167	10.35	14.34	24.69	46.00	-21.31	peak			
4		384.0500	8.47	18.96	27.43	46.00	-18.57	peak			
5		576.4333	7.04	22.61	29.65	46.00	-16.35	peak			
6		768.8167	3.98	26.89	30.87	46.00	-15.13	peak			

### RESULT: PASS

Note: All Other modes above 1GHz have more than 20db margin, no recording in the report  
Measurement = Reading + Factor, Over = Measurement – Limit.

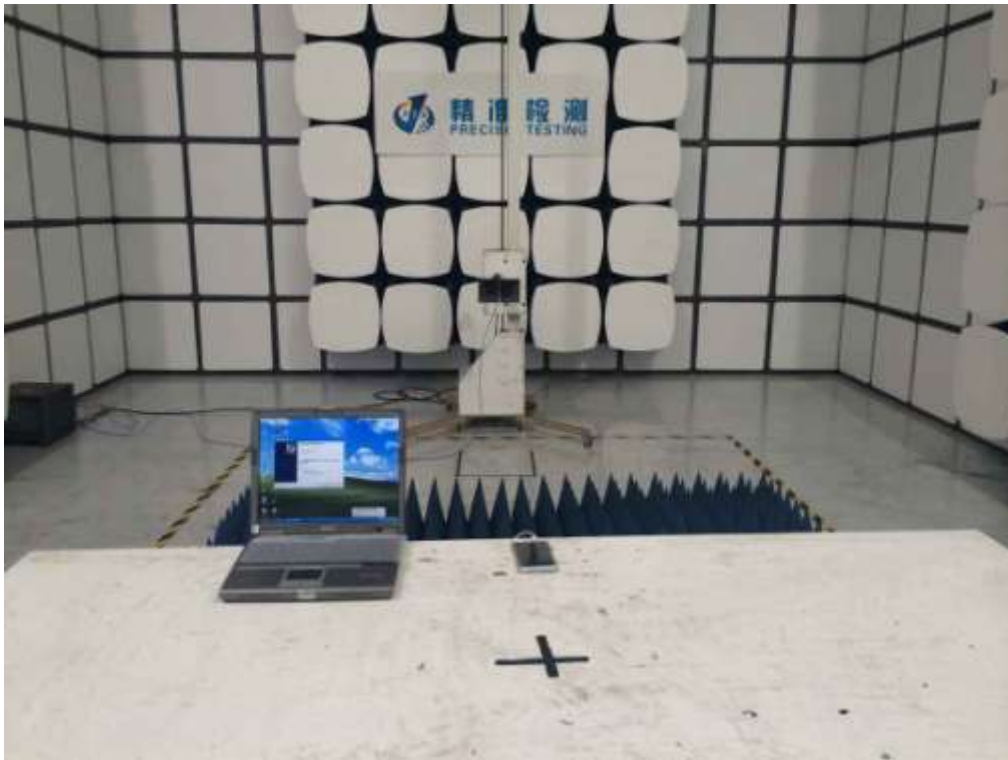
## APPENDIX A: PHOTOGRAPHS OF TEST SETUP

### FCC LINE CONDUCTED EMISSION TEST SETUP



FCC RADIATED EMISSION TEST SETUP





## APPENDIX B: PHOTOGRAPHS OF EUT

TOTAL VIEW OF EUT

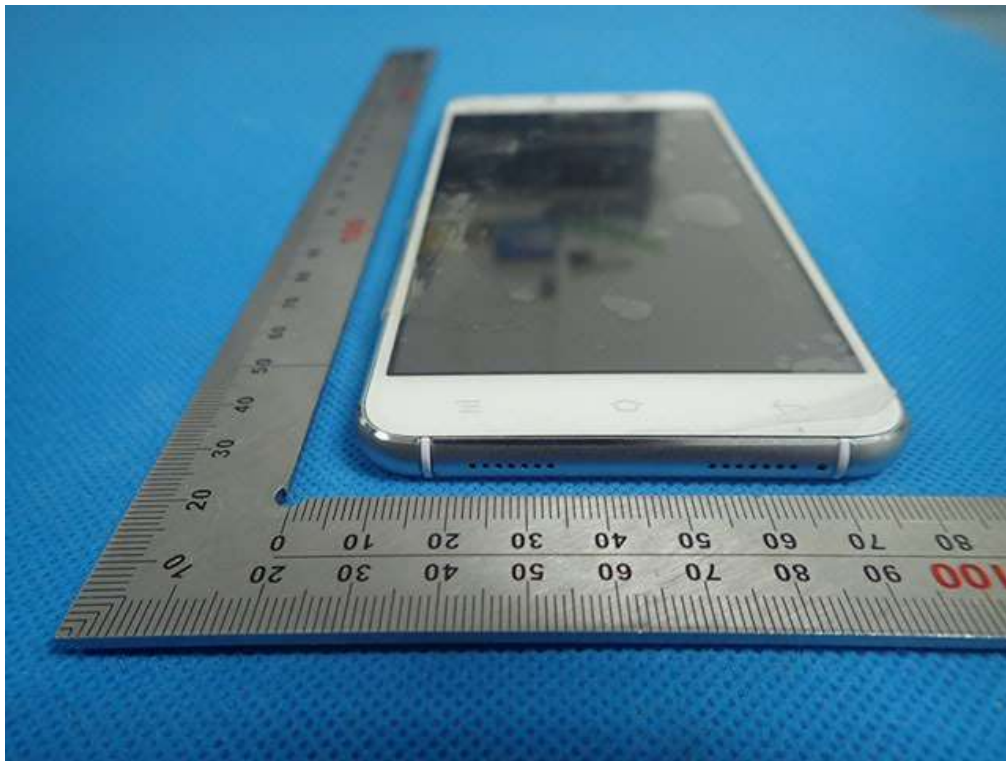


TOP VIEW OF EUT





BOTTOM VIEW OF EUT



FRONT VIEW OF EUT



BACK VIEW OF EUT



LEFT VIEW OF EUT

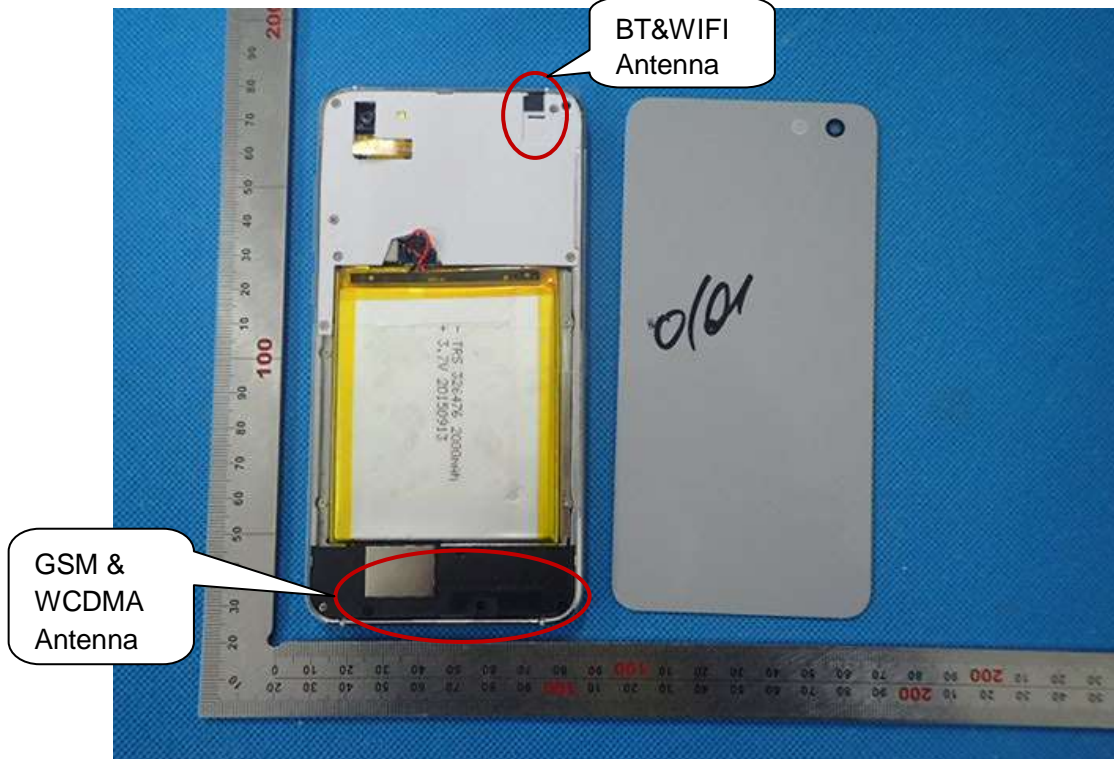




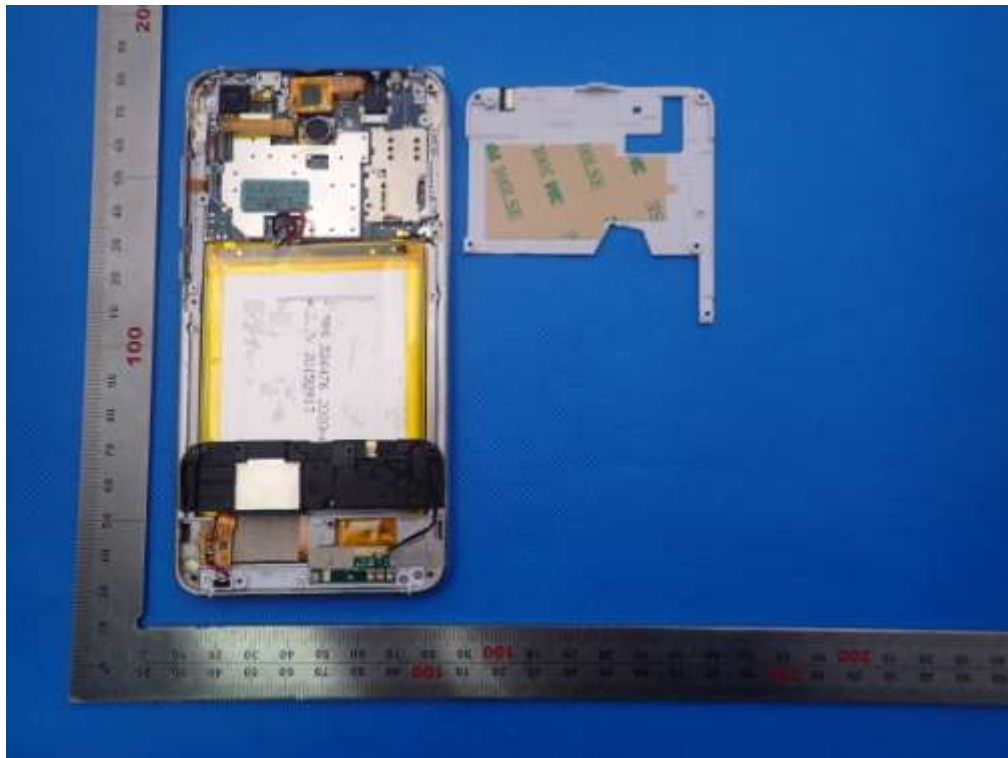
RIGHT VIEW OF EUT



OPEN VIEW OF EUT-1



OPEN VIEW OF EUT-2



OPEN VIEW OF EUT-3

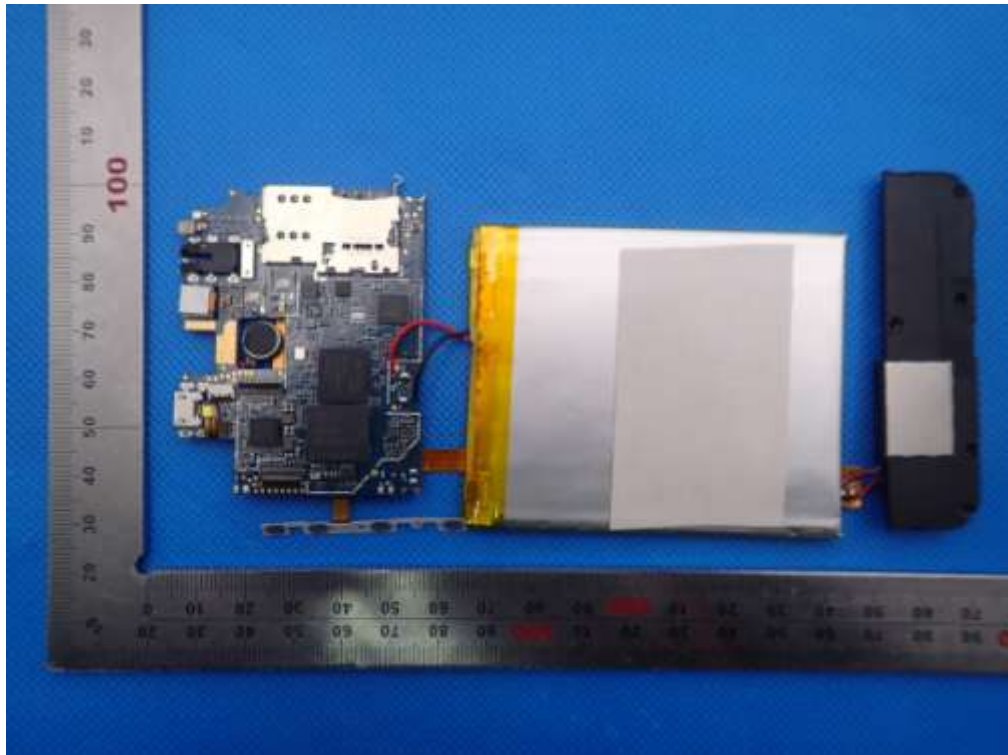




INTERNAL VIEW OF EUT-1



INTERNAL VIEW OF EUT-2



----END OF REPORT----