

# User Manual

## Smart Rain Forest Spray System WD-01CE



**CE RoHS**



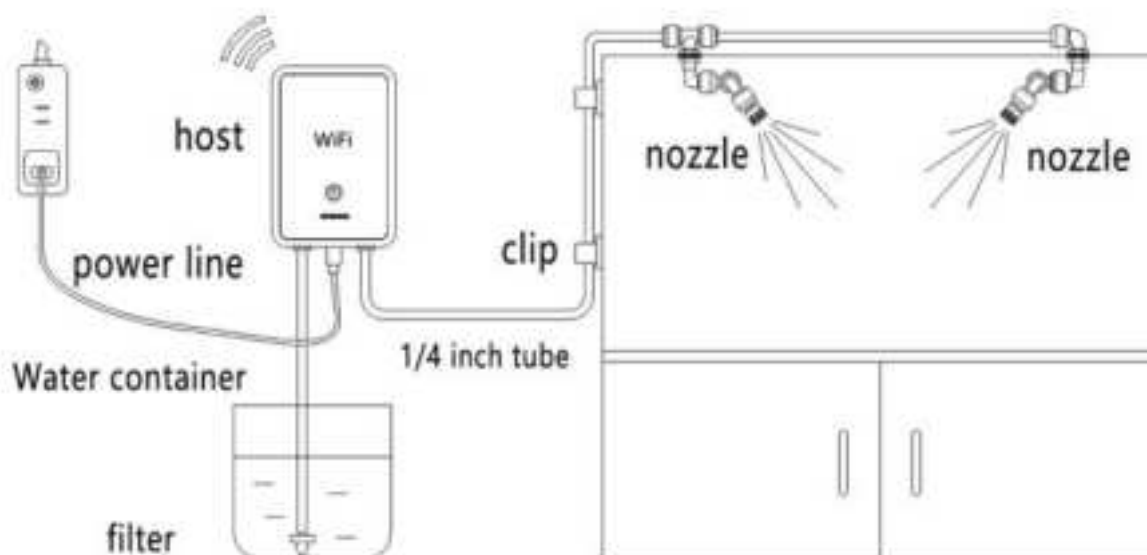
## Place the host

When placing the host, you can choose direct placement, suction cup fixation, or hook. Please note the correct direction.



## Connection method

When DIY connecting pipes, Wearing gloves will be easier to operate.



## Operation process

Download APP >> Registration&login >> Connect device >> Set device

### Download APP

Search "Smart Life-Smart Living" by your mobile phone , download and install the APP.



※ The following permissions need to be allowed

- "Smart life" would like to find and connect to devices on your local network.
- Allow "Smart Life" to use your location while Using App.
- "Smart Life" would like to send you Notifications.
- "Smart Life" would like to send you Critical Alerts.
- "Smart Life" would like to Access Your Home Data.
- "Smart Life" would like to Use Bluetooth.



## Registration and Login

You can register with your mobile phone numbers or email. If you have already registered an account, you can enter your account and password to log in.

## Connect device

Plug in the type-c power supply, the blue signal indicator lights up, and different flashing modes represent different states, as follows:

1. Always on: Not connected/offline
2. Flashing: To be connected
3. Off: Connected



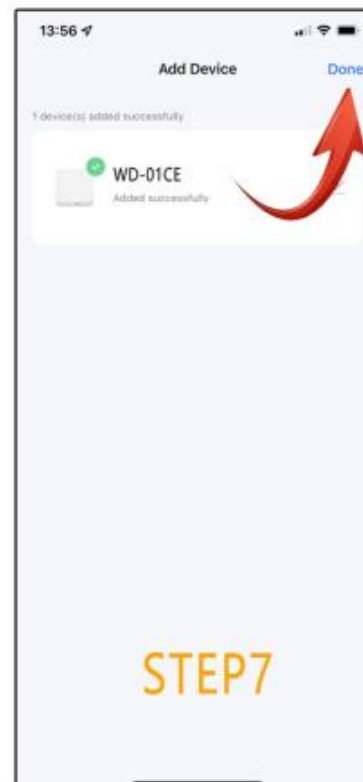
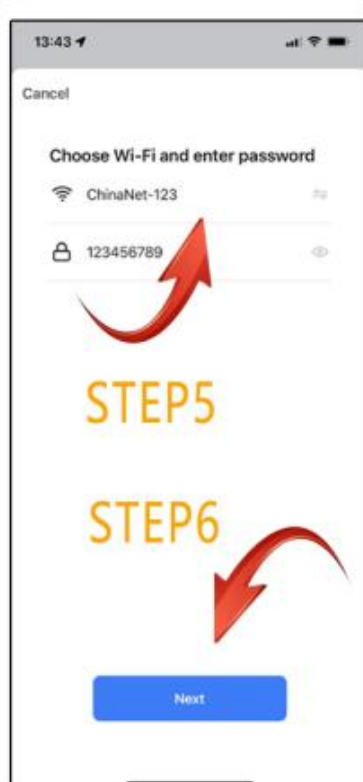
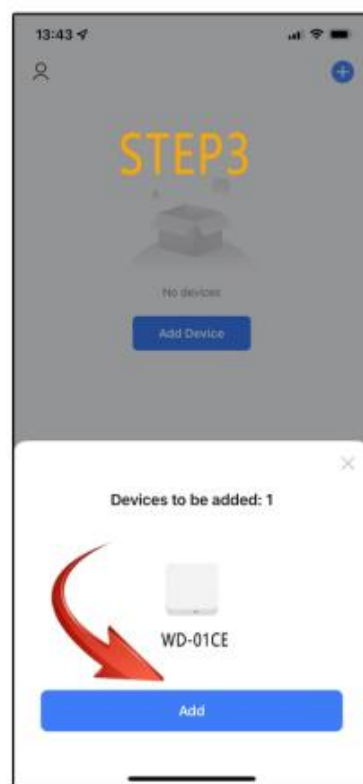
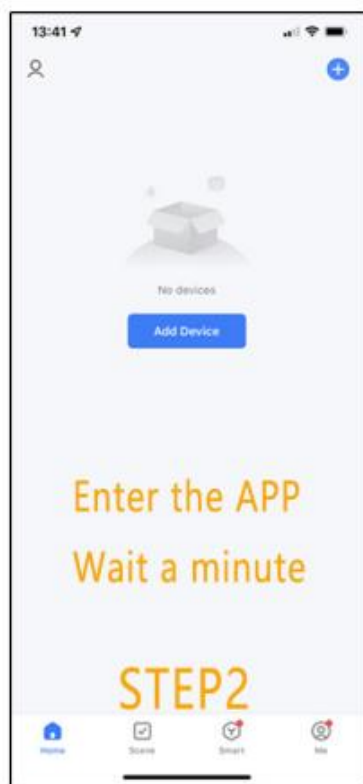
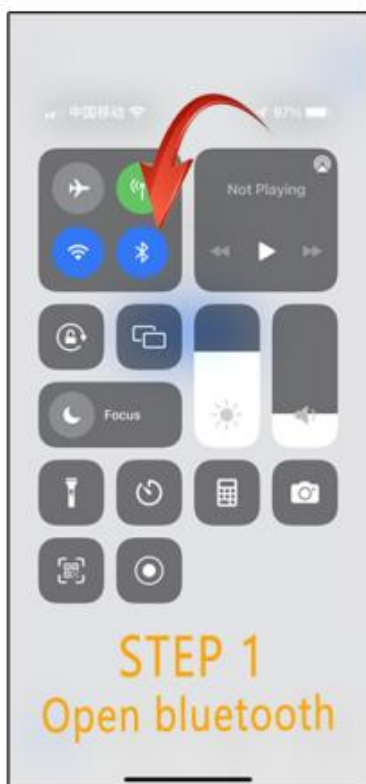
※ Make sure that both WiFi and Bluetooth of the mobile phone are turned on, and the WiFi signal is 2.4GHz.

※ Wait for 20 seconds and then open the "Smart Life" APP.

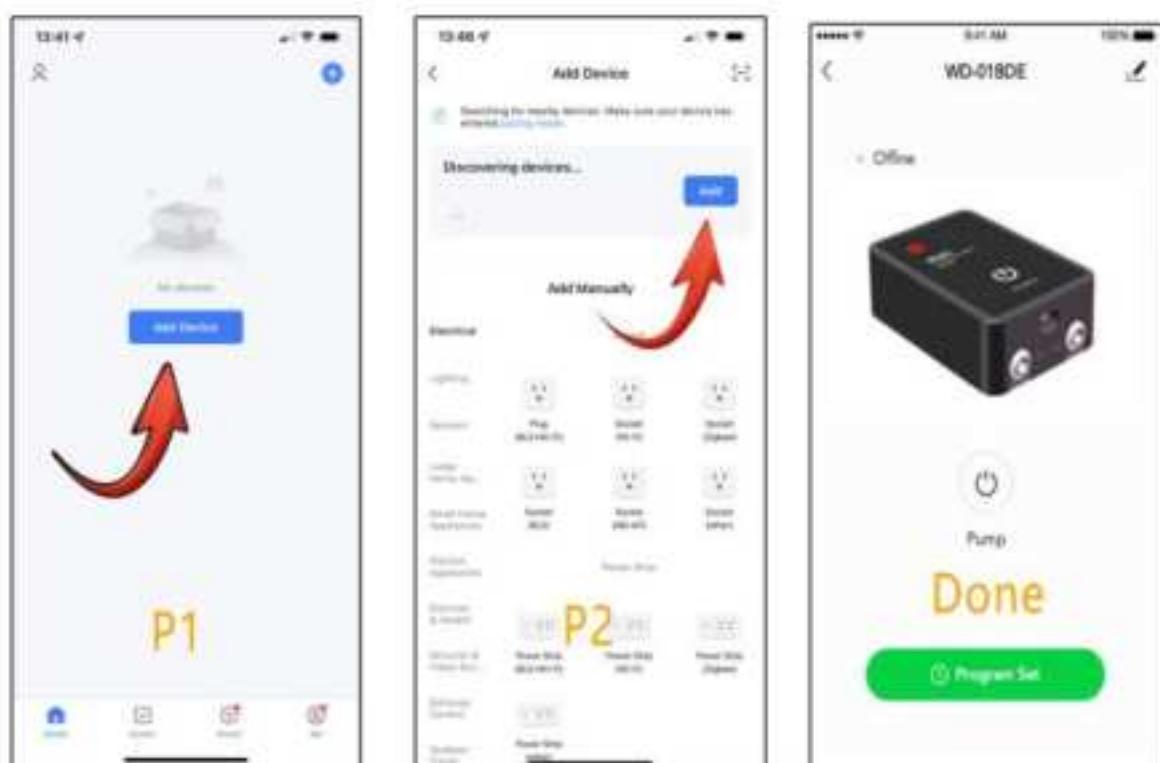
Some phones can automatically connect to the device, Enter the wireless network password to add a device (STEP1--STEP7)

Some mobile phones cannot automatically connect to the device, and you need to add the device manually. (P1--P2),then follow STEP4--STEP7.

After networking, you can enter the device interface.







If the device still can't connect to the network, refer to the following:

1. WiFi and Bluetooth are both turned on and are in a 2.4GHz network.
2. The router has a good signal and can connect to the Internet normally.
3. When installing the APP, all permissions have been allowed and the wireless network password is correct.
4. The device is in distribution mode and the signal light is flashing. If the signal light is not flashing, Hold the key for 5 seconds to reset the device, Then reconnect again.

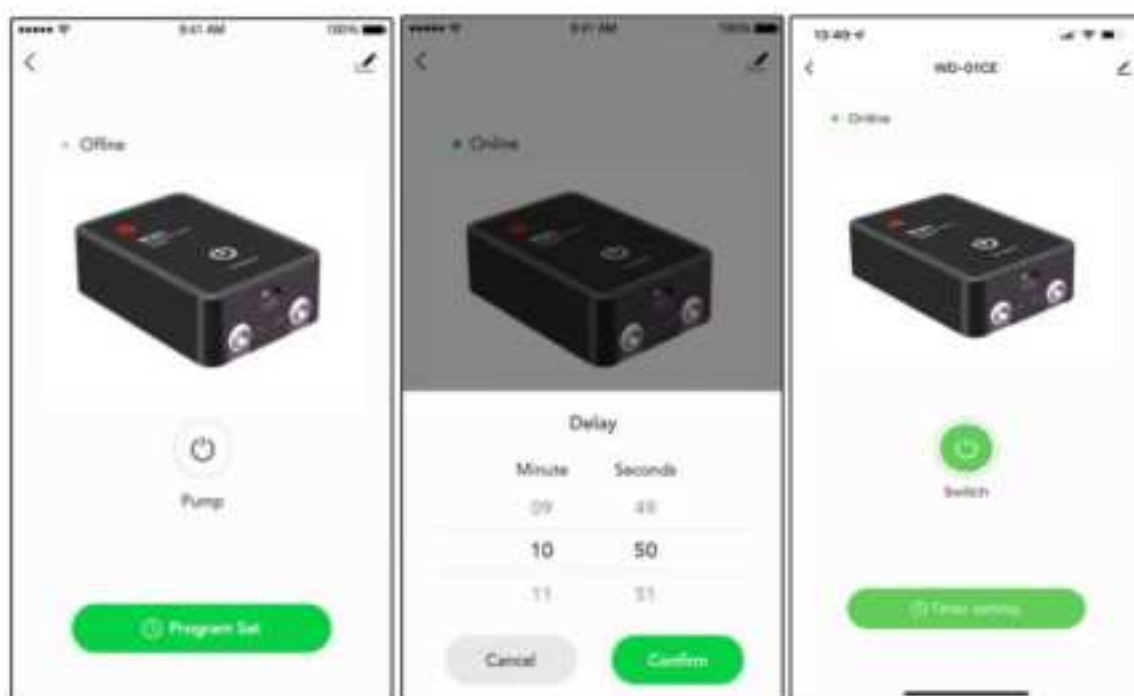
# Manual control mode

Click the app button or the device touch button to manually turn on or turn off the water pump.



## Delay mode

Hold the button in the app software for 3 seconds to enter the countdown mode. You can set the time, and the water pump will stop after running according to the time you set.

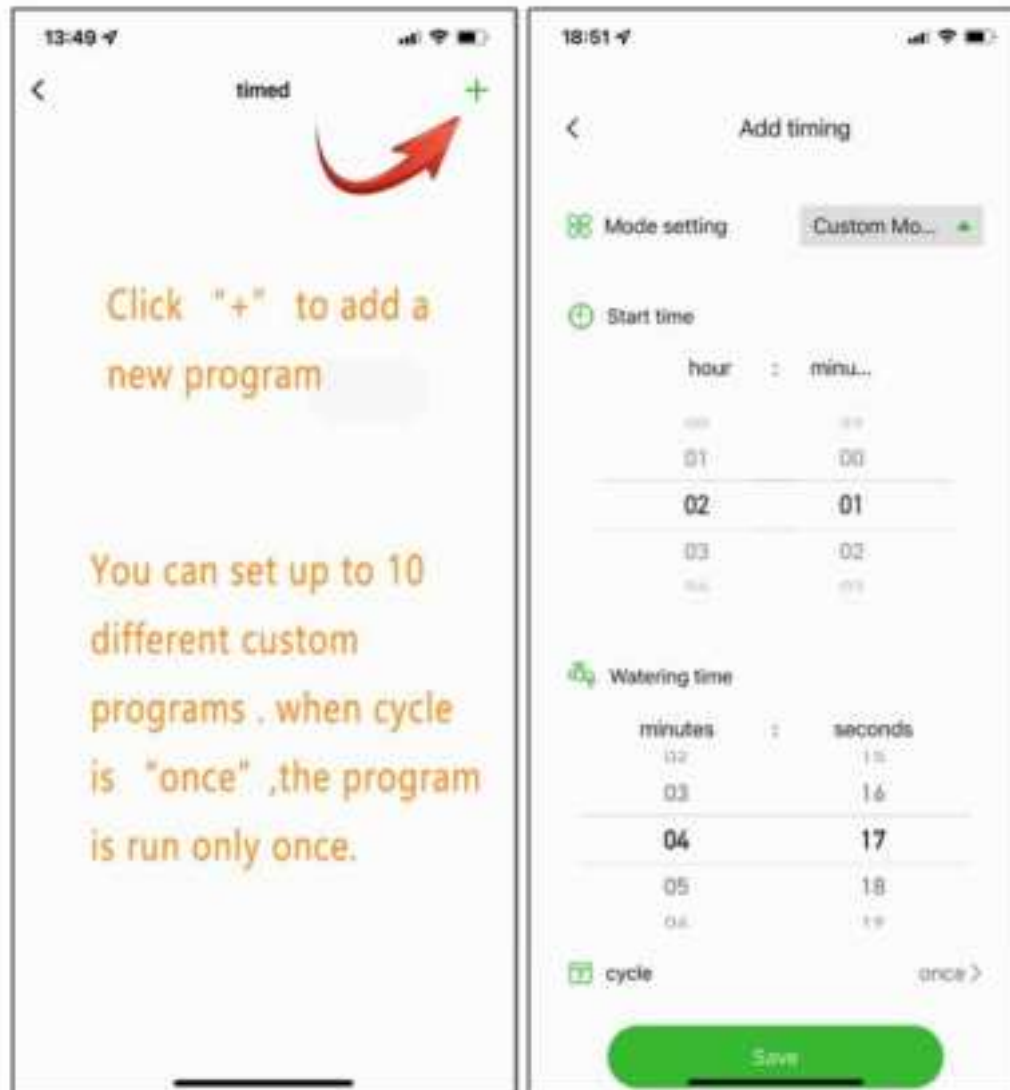




# Schedule Watering

## Custom mode

Under custom mode, you can set the starting time, watering time and working duration of the device.



## Interval mode

Under the interval mode, the device will work for a while, stop for a while and then work again(based on your setting).and the working way will go on cycles.

13:49

timed

+

Click "+" to add a new program

Under interval mode You can set only one program.

19:01

Add timing

Mode setting

Interval mode

Start time

hour : minu...

00 00

01 00

02 01

03 02

04 03

Watering time

minutes : seconds

02 15

03 16

04 17

05 18

06 19

Interval duration

day hour

00

01 00

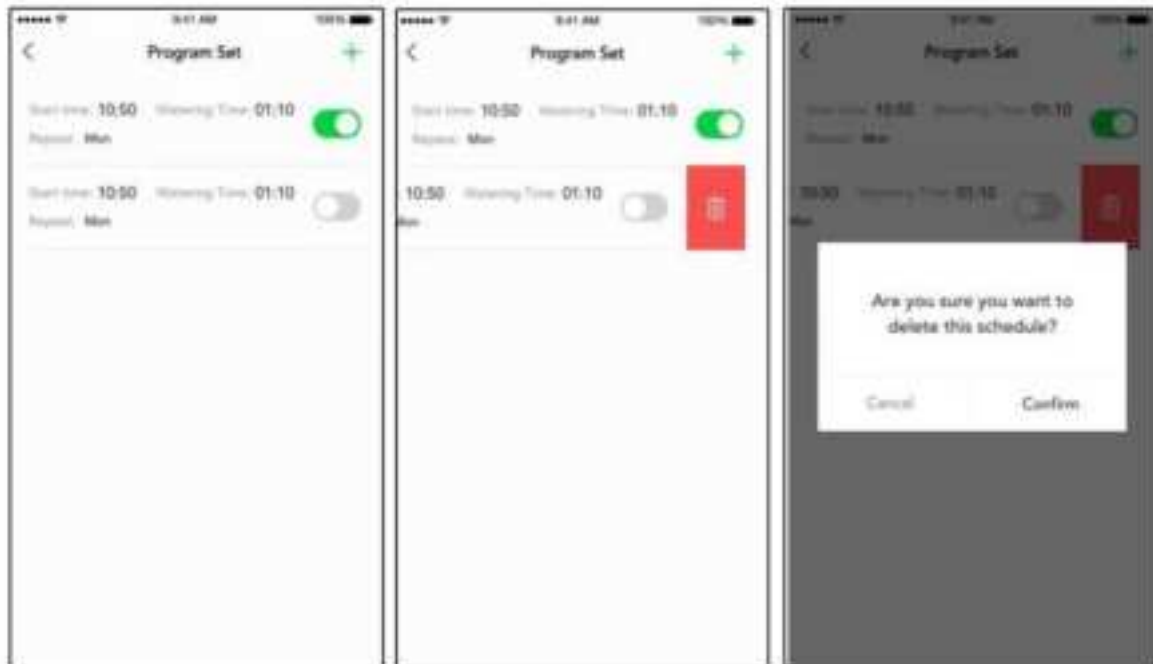
02 01

03 02

Save

## Program management

You can enable or disable the program by sliding the switch; If you need to delete the program, you can slide the program to the left and click the trash can on the right to delete it.



## Product parameters

Rated voltage: 5 V	Size: 130*87*43 (mm)	Lift: $\geq 2$ m
Rated current: 1A	Net weight: 180 g	Suction: $\geq 1.5$ m
Noise range: $\leq 50$ db(30cm)	Maximum pressure: $\geq 30$ psi (200kpa)	
Wifi: 2.4 Ghz	Ambient temperature: 4~45°C	

## Note

1. Check the nozzle regularly. If it is blocked, please clean it in time to get the best spray effect.
2. The position of the water container is relatively lower than the flowerpot to prevent the water in the bucket from directly flowing into the flowerpot without starting up in the sealed pipeline.
3. WD-01CE is only used for intermittent watering, and can not be used as a pump to continuously transport fluid medium for a long time, otherwise it will seriously reduce the service life of the main engine diaphragm pump.

## **FCC Statement**

This device complies with part 15 of the FCC rules. Operation is subject to the following two conditions: (1) this device may not cause harmful interference, and (2) this device must accept any interference received, including interference that may cause undesired operation.

Caution: Changes or modifications not expressly approved by the party responsible for Compliance could void the user's authority to operate the equipment.

NOTE: This equipment has been tested and found to comply with the limits for a Class B digital device, pursuant to part 15 of the FCC Rules. These limits are designed to provide reasonable protection against harmful interference in a residential installation. This equipment generates uses and can radiate radio frequency energy and, if not installed and used in accordance with the instructions, may cause harmful interference to radio communications. However, there is no guarantee that interference will not occur in a particular installation. If this equipment does cause harmful interference to radio or television reception, which can be determined by turning the equipment off and on, the user is encouraged to try to correct the interference by one or more of the following measures:

- Reorient or relocate the receiving antenna.
- Increase the separation between the equipment and receiver.
- Connect the equipment into an outlet on a circuit different from that to which the receiver is connected.
- Consult the dealer or an experienced radio/TV technician for help important announcement .

## **Radiation Exposure Statement**

To comply with FCC RF exposure compliance requirements, this grant is applicable to only mobile configurations. The antennas used for this transmitter must be installed to provide a separation distance of at least 20 cm from all persons and must not be co-located or operating in conjunction with any other antenna or transmitter.