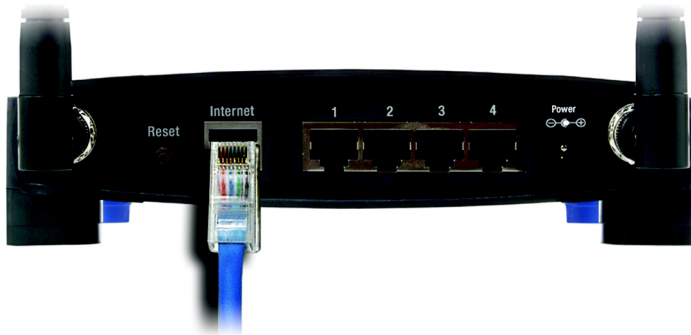
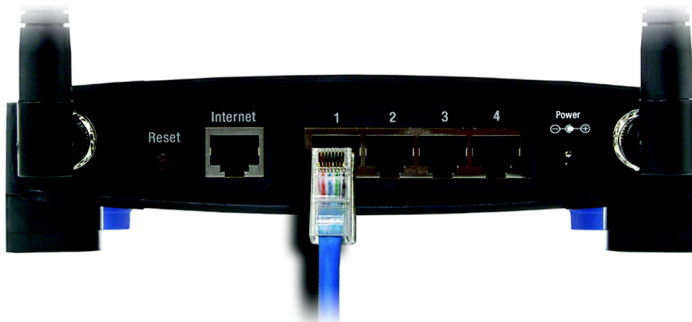


8. Connect a standard Ethernet network cable to the Broadband Router's Internet port. Then, connect the other end of the Ethernet cable to one of the numbered Ethernet ports on your other router.



**Figure 4-6: The Router with the Internet Connection is connected through the Internet Port**

9. Decide which network computers or Ethernet devices you want to connect to the Broadband Router.



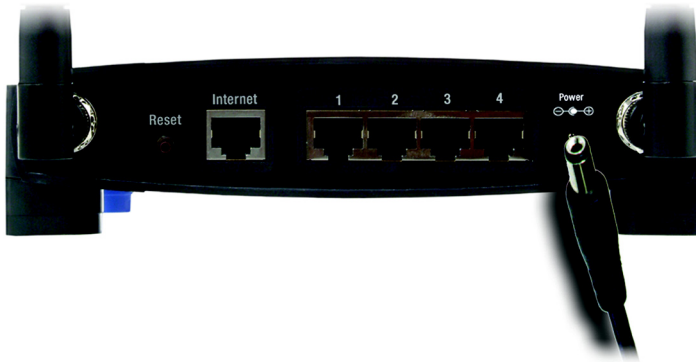
**Figure 4-7: Connecting Your Network Devices**



**IMPORTANT:** Make sure you use the power adapter that is supplied with the Router. Use of a different power adapter could damage the Router.

Disconnect the selected computers or devices from the other router, and then connect them to the Broadband Router's numbered ports using standard Ethernet network cabling.

10. Connect the AC power adapter to the Broadband Router's Power port and the other end into an electrical outlet. Only use the power adapter supplied with the Broadband Router. Use of a different adapter may result in product damage.



**Figure 4-8: Connecting the Power**

**Now that the hardware installation is complete, proceed to “Chapter 5: Configuring the Wireless-G Broadband Router,” for directions on using the Router’s Web-Based Utility to configure the Router’s settings for your network.**

# Chapter 5: Setting up the Wireless-G Broadband Router

## Overview

The Wireless-G Broadband Router with SpeedBooster Setup Wizard will guide you through the installation procedure. It will go through the instructions for configuring the Router's network and wireless settings.

## Using the Setup Wizard

1. Insert the **Setup Wizard CD-ROM** into your CD-ROM drive. The Setup Wizard should run automatically, and the *Welcome* screen should appear. If it does not, click the **Start** button and choose **Run**. In the field that appears, enter **D:\setup.exe** (if "D" is the letter of your CD-ROM drive).
2. The Setup Wizard will automatically detect the language setting of your PC. On the initial *Welcome* screen, click the **Next** button if you want to proceed with the Setup Wizard using the current language. If you want to use a different language, select the appropriate language, and then click the **Next** button.

3. On the following *Welcome* screen, click the **Click Here to Start** button if this is the first time you are running the Setup Wizard. These are your other choices:

**Wireless Setup** - If you have a computer displaying the SecureEasySetup logo, then click **Wireless Setup** and proceed to the section at the end of this chapter, "Using SecureEasySetup to Configure Your Notebook."



**NOTE:** SecureEasySetup uses WPA-Personal encryption. If your current wireless devices do not support WPA-Personal security, then you cannot use SecureEasySetup on your network. You will need to manually configure your network security using the encryption supported by your existing devices.

**Norton Internet Security** - Click the **Norton Internet Security** button to install the Norton Internet Security software program.

**User Guide** - Click the **User Guide** button to open the PDF file of this User Guide.

**Exit** - Click the **Exit** button to exit the Setup Wizard.



Figure 5-1: Setup Wizard's Welcome - Language Selection Screen



Figure 5-2: Setup Wizard's Welcome - Start Wizard Screen

4. After reading the License Agreement, click the **Next** button if you accept, or click the **Cancel** button to end the installation.

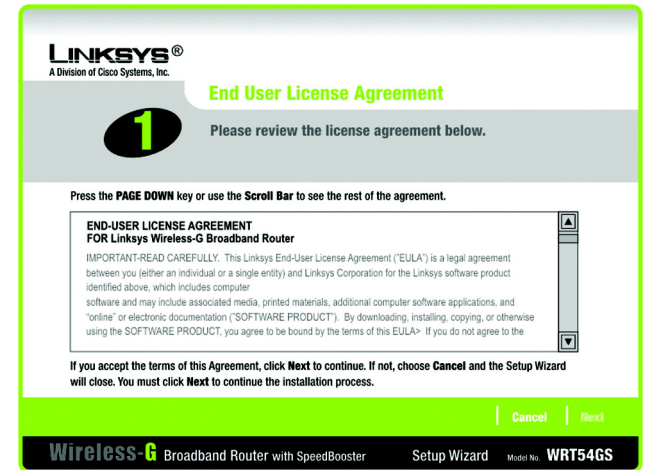


Figure 5-3: Setup Wizard's License Agreement Screen

5. The Setup Wizard will ask you to disconnect your broadband modem from your PC. After you have done so, click the **Next** button.

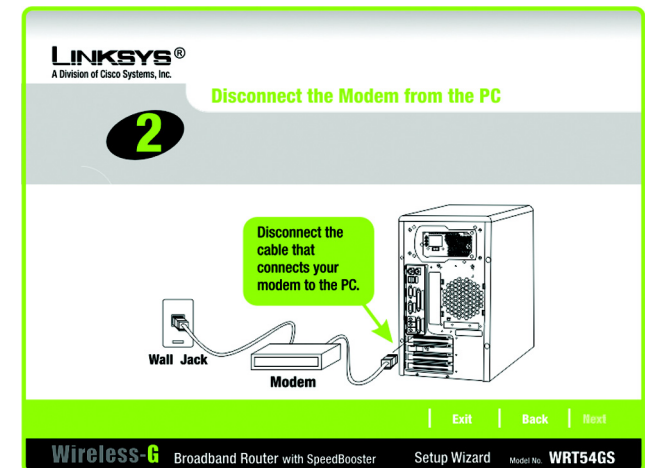


Figure 5-4: Setup Wizard's Disconnect the Modem from the PC Screen

6. The Setup Wizard will ask you to connect your broadband modem to the Router. After you have done so, click the **Next** button.

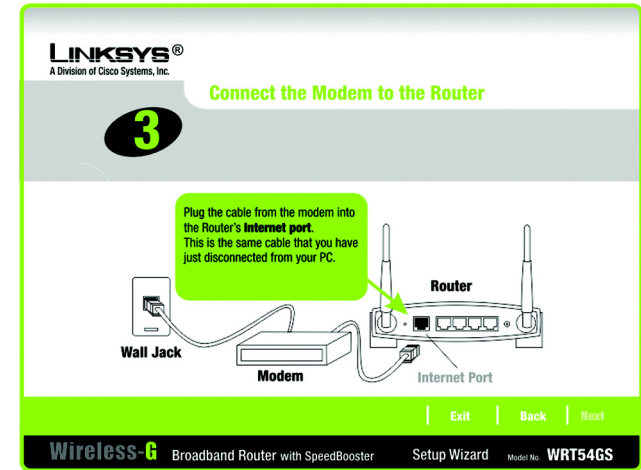


Figure 5-5: Setup Wizard's Connect the Modem to the Router Screen

7. The Setup Wizard will ask you to connect a network cable to your PC. After you have done so, click the **Next** button.

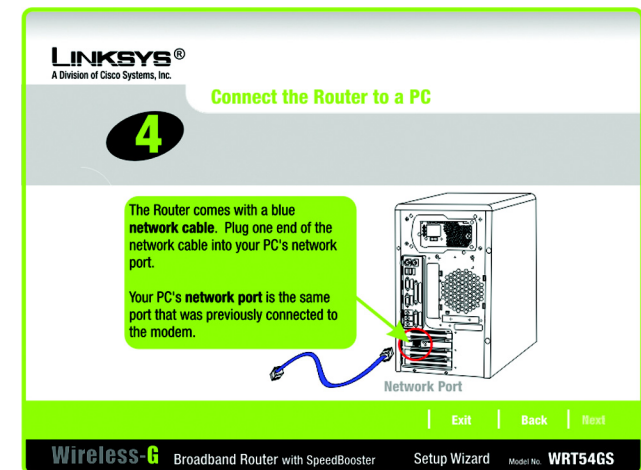


Figure 5-6: Setup Wizard's Connect a Network Cable to a PC Screen

8. The Setup Wizard will ask you to connect the other end of the network cable to the Router.

Then you can also connect additional PCs to the Router.

After you have done so, click the **Next** button.

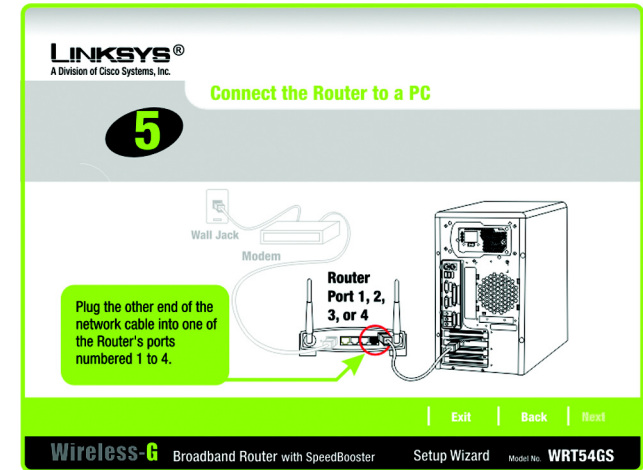


Figure 5-7: Setup Wizard's Connect the Network Cable to the Router Screen

9. The Setup Wizard will ask you to power on the Router. After you have done so, click the **Next** button.

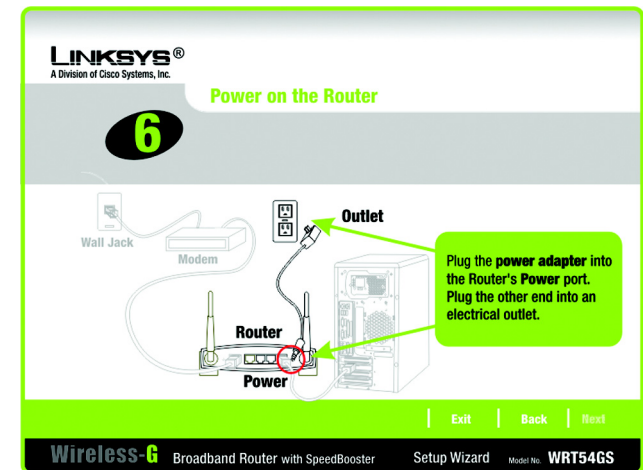


Figure 5-8: Setup Wizard's Power on the Router Screen

10. Make sure the Router's Power, Internet, and numbered LEDs (depending on the number of PCs connected) are lit on its front panel. After you have done so, click the **Next** button.

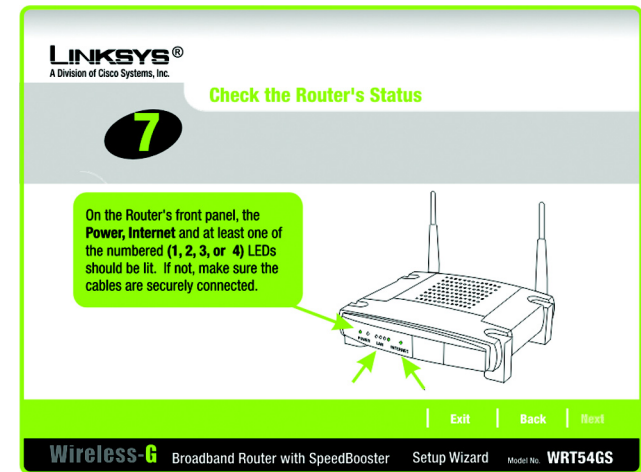


Figure 5-9: Setup Wizard's Check the Router's Status Screen

11. The Setup Wizard will automatically detect the Internet connection type you use: **Cable or DHCP** or **DSL (PPPoE)**. If the Setup Wizard cannot detect your Internet connection type, you will see the *Advanced Internet Settings* screen, and you will be asked to select your Internet connection type: **Static IP**, **PPTP**, **L2TP**, or **Telstra**. Proceed to the appropriate section for your Internet connection type.

### Cable or DHCP

**Host Name** - Enter the Host Name if required by your ISP; otherwise, leave this field blank.

**Domain Name** - Enter the Domain Name if required by your ISP; otherwise, leave this field blank.

Click the **Next** button to continue or the **Back** button to return to the previous screen.

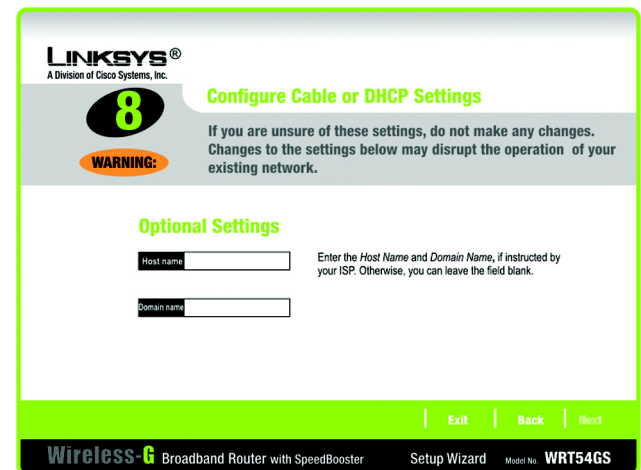


Figure 5-10: Setup Wizard's Configure Cable or DHCP Settings Screen

## DSL (PPPoE)

**User Name** - Enter the User Name provided by your ISP.

**Password** - Enter the Password provided by your ISP.

**Confirm** - To confirm the Password, enter it again in this field.

**Keep Alive** - If you want the Router to periodically check your Internet connection, select **Keep Alive**. Then specify how often you want the Router to check the Internet connection. If the connection is down, the Router will automatically re-establish your connection.

**Connect on Demand** - If you want the Router to end the Internet connection after it has been inactive for a period of time, select **Connect on Demand** and designate the number of minutes you want that period of inactivity to last.

Click the **Next** button to continue or the **Back** button to return to the previous screen.

## Static IP

**Connection** - If you are required to use a permanent IP address to connect to the Internet, select **Static IP** from the drop-down menu.

**IP Address** - Enter the IP address provided by your ISP.

**Subnet Mask** - Enter the Subnet Mask provided by your ISP.

**Gateway** - Enter the Gateway IP address provided by your ISP.

**DNS 1-2** - Enter the DNS (Domain Name System) server IP address(es) provided by your ISP. You need to enter at least one DNS address.

Click the **Next** button to continue or the **Back** button to return to the previous screen.

**LINKSYS®**  
A Division of Cisco Systems, Inc.

**8** **Configure DSL (PPPoE) Settings**

**WARNING:** If your Internet Service Provider (ISP) requires you to log in before accessing the Internet, then enter your account information in the fields below.

User Name  Enter the User Name and Password as instructed by your ISP.  
 Password  Confirm the password by entering the password again in the Confirm field.  
 Confirm

☒ Keep Alive  seconds Choose Keep Alive and specify a time interval to always keep the Internet connection active.  
☐ Connect on Demand  minutes Choose Connect on Demand to disconnect from the Internet after a period of inactivity.

[Exit](#) [Back](#) [Next](#)

**Wireless-G** Broadband Router with SpeedBooster Setup Wizard Model No. **WRT54GS**

**Figure 5-11: Setup Wizard's Configure DSL (PPPoE) Settings Screen**

**LINKSYS®**  
A Division of Cisco Systems, Inc.

**8** **Advanced Internet Settings**

**WARNING:** Your Internet connection must be configured manually. Please contact your ISP and select the proper Internet Connection type.

Connection: Static IP

IP Address  Enter the settings provided by your Internet Service Provider (ISP).  
 Subnet Mask   
 Gateway   
 DNS 1   
 DNS 2

[Exit](#) [Back](#) [Next](#)

**Wireless-G** Broadband Router with SpeedBooster Setup Wizard Model No. **WRT54GS**

**Figure 5-12: Setup Wizard's Advanced Internet Settings - Static IP Screen**



## PPTP

**Connection** - PPTP (Point-to-Point Tunneling Protocol) service is used in Europe only. If you are using a PPTP connection, select **PPTP** from the drop-down menu.

**User Name** - Enter the User Name provided by your ISP.

**Password** - Enter the Password provided by your ISP.

**Confirm** - To confirm the Password, enter it again in this field.

**IP Address** - Enter the IP address provided by your ISP.

**Subnet Mask** - Enter the Subnet Mask provided by your ISP.

**Gateway** - Enter the Gateway IP address provided by your ISP.

Click the **Next** button to continue or the **Back** button to return to the previous screen.

**Keep Alive** - If you want the Router to periodically check your Internet connection, select **Keep Alive**. Then specify how often you want the Router to check the Internet connection. If the connection is down, the Router will automatically re-establish your connection.

**Connect on Demand** - If you want the Router to end the Internet connection after it has been inactive for a period of time, select **Connect on Demand** and designate the number of minutes you want that period of inactivity to last.

Click the **Next** button to continue or the **Back** button to return to the previous screen.

**LINKSYS®**  
A Division of Cisco Systems, Inc.

**8**

**Advanced Internet Settings**

Your Internet connection must be configured manually. Please contact your ISP and select the proper Internet Connection type.

**WARNING:**

Connection: PPTP

User Name: \_\_\_\_\_

Password: \_\_\_\_\_

Confirm: \_\_\_\_\_

IP Address: \_\_\_\_\_

Subnet Mask: \_\_\_\_\_

Gateway: \_\_\_\_\_

Enter the User Name and Password as instructed by your ISP. Confirm the password by entering the password again in the Confirm field.

Enter the settings provided by your Internet Service Provider (ISP).

Exit Back Next

Wireless-G Broadband Router with SpeedBooster Setup Wizard Model No. WRT54GS

**Figure 5-13: Setup Wizard's Advanced Internet Settings - PPTP Screen**

**LINKSYS®**  
A Division of Cisco Systems, Inc.

**8**

**Keep Alive / Connect on Demand (PPTP Continued)**

With Keep Alive, the Router will periodically check your Internet connection and automatically re-establish connection if you are disconnected. With Connect on Demand, the Router can cut the Internet connection after it has been inactive for a specific period of time.

☒ Keep Alive  seconds Choose Keep Alive and specify a time interval to always keep the Internet connection active.

☐ Connect on Demand  minutes Choose Connect on Demand to disconnect from the Internet after a period of inactivity.

Exit Back Next

Wireless-G Broadband Router with SpeedBooster Setup Wizard Model No. WRT54GS

**Figure 5-14: Setup Wizard's Keep Alive/Connect on Demand (PPTP Continued) Screen**

## L2TP

**Connection** - If you are using an L2TP (Layer 2 Tunneling Protocol) connection, select **L2TP** from the drop-down menu.

**User Name** - Enter the User Name provided by your ISP.

**Password** - Enter the Password provided by your ISP.

**Confirm** - To confirm the Password, enter it again in this field.

**L2TP Server** - Enter the IP address of the L2TP server you are using; this should be provided by your ISP.

**Keep Alive** - If you want the Router to periodically check your Internet connection, select **Keep Alive**. Then specify how often you want the Router to check the Internet connection. If the connection is down, the Router will automatically re-establish your connection.

**Connect on Demand** - If you want the Router to end the Internet connection after it has been inactive for a period of time, select **Connect on Demand** and designate the number of minutes you want that period of inactivity to last.

Click the **Next** button to continue or the **Back** button to return to the previous screen.

The screenshot shows the 'Advanced Internet Settings' screen of the Linksys Setup Wizard. At the top, it says 'LINKSYS® A Division of Cisco Systems, Inc.' and '8'. A warning message states: 'Your Internet connection must be configured manually. Please contact your ISP and select the proper Internet Connection type.' Below this, there is a 'Connection' dropdown menu set to 'L2TP'. To the right of this dropdown, it says: 'Enter the User Name and Password as instructed by your ISP. Confirm the password by entering the password again in the Confirm field.' Below the dropdown, there are four input fields: 'User Name', 'Password', 'Confirm', and 'L2TP Server'. At the bottom, there are two radio buttons: 'Keep Alive' (selected) and 'Connect on Demand'. To the right of these radio buttons, there are two time interval fields: 'seconds' and 'minutes'. To the right of these fields, it says: 'Choose Keep Alive and specify a time interval to always keep the Internet connection active. Choose Connect on Demand to disconnect from the Internet after a period of inactivity.' At the bottom of the screen, there are three buttons: 'Exit', 'Back', and 'Next'. The footer of the screen says 'Wireless-G Broadband Router with SpeedBooster', 'Setup Wizard', and 'Model No. WRT54GS'.

**Figure 5-15: Setup Wizard's Advanced Internet Settings - L2TP Screen**