

**Melbourne**

176 Harrick Road  
Keilor Park, Vic 3042  
Tel: +61 3 9365 1000

**Sydney**

Unit 3/87 Station Road  
Seven Hills, NSW 2147  
Tel: +61 2 9624 2777

Email: [emc-general@emctech.com.au](mailto:emc-general@emctech.com.au)

Web: [www.emctech.com.au](http://www.emctech.com.au)

## APPENDIX E INTERNAL IDENTIFICATION PHOTOGRAPHS

**Test Report Number: S210610-1**

**FCC ID: S7R-CK2T1**

**IC: 25706-CK2T1**

**Tested For:** Taggle Systems Pty Ltd  
**Device under Test:** Cockatoo  
**Antenna:** Internal Antenna Unit

**Issue Date:** 10<sup>th</sup> December 2021

EMC Technologies Pty Ltd reports apply only to the specific samples tested under stated test conditions. It is the manufacturer's responsibility to assure that additional production units of this model are manufactured with identical electrical and mechanical components. EMC Technologies Pty Ltd shall have no liability for any deductions, inferences or generalisations drawn by the client or others from EMC Technologies Pty Ltd issued reports. This report shall not be used to claim, constitute or imply product endorsement by EMC Technologies Pty Ltd.



Accreditation No. 5292

Accredited for compliance with ISO/IEC 17025 – Testing  
NATA is a signatory to the ILAC Mutual Recognition Arrangement for the mutual recognition of the equivalence of testing, calibration, inspection and proficiency testing scheme providers reports.  
**This document may only be reproduced in full with exception of Certificate of Compliance**

## REVISION TABLE

Version	Sec/Para Changed	Change Made	Date
1		Initial Issue of Document	10/12/2021



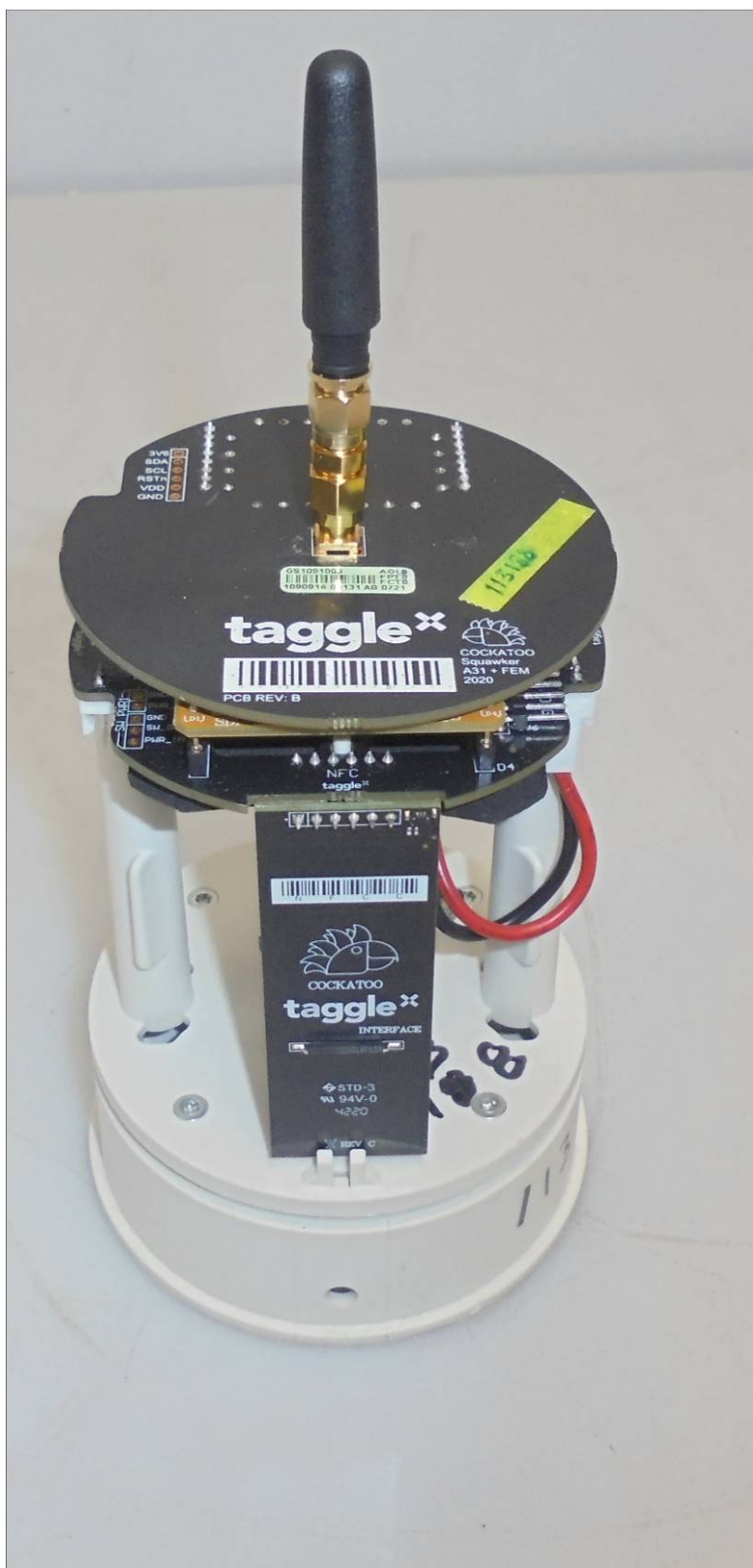
Accreditation No.5292



Accredited for compliance with ISO/IEC 17025 – Testing  
NATA is a signatory to the ILAC Mutual Recognition Arrangement for the mutual recognition of the equivalence of testing, calibration, inspection and proficiency testing scheme providers reports.  
**This document may only be reproduced in full with exception of Certificate of Compliance**

## APPENDIX E1 INTERNAL IDENTIFICATION PHOTOGRAPHS

### Internal Antenna Unit



## APPENDIX E2 INTERNAL IDENTIFICATION PHOTOGRAPHS

### Internal Antenna Unit



Accredited for compliance with ISO/IEC 17025 – Testing  
NATA is a signatory to the ILAC Mutual Recognition Arrangement for the mutual recognition of the equivalence of testing, calibration, inspection and proficiency testing scheme providers reports.  
**This document may only be reproduced in full with exception of Certificate of Compliance**

## APPENDIX E3 INTERNAL IDENTIFICATION PHOTOGRAPHS

### Internal Antenna Unit





## APPENDIX E4 INTERNAL IDENTIFICATION PHOTOGRAPHS

### Internal Antenna Unit



## APPENDIX E5 INTERNAL IDENTIFICATION PHOTOGRAPHS

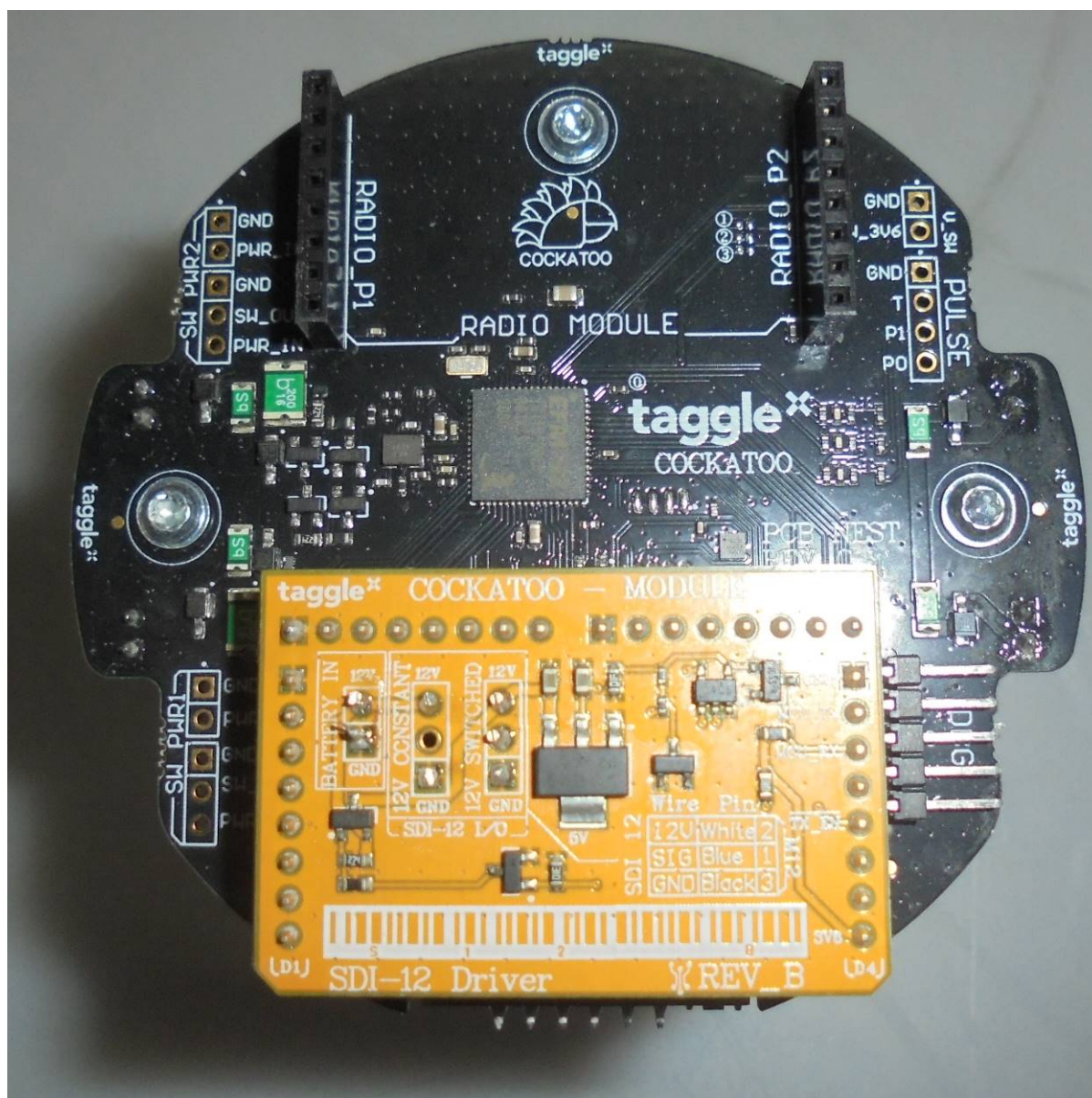
### Internal Antenna Unit





## APPENDIX E6 INTERNAL IDENTIFICATION PHOTOGRAPHS

### Internal Antenna Unit





## APPENDIX E7 INTERNAL IDENTIFICATION PHOTOGRAPHS

### Internal Antenna Unit



Accreditation No.5292



Accredited for compliance with ISO/IEC 17025 – Testing  
NATA is a signatory to the ILAC Mutual Recognition Arrangement for the mutual recognition of the equivalence of testing, calibration, inspection and proficiency testing scheme providers reports.  
**This document may only be reproduced in full with exception of Certificate of Compliance**