

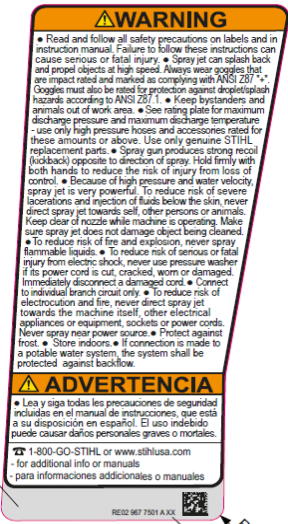
RE100 PLUS美国



警告贴1位置：2a



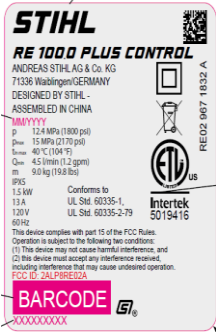
警告贴2位置：2b



美国梯形警告贴：3



铭牌贴位置：1



美国Pro65警告贴位置：16



电源线贴 4951-967-4001-A
位置：离插头约20-25 cm 远即可。

Rating plate 50 x 60 mm

STIHL

RE 100.0 PLUS CONTROL

ANDREAS STIHL AG & Co. KG
71336 Waiblingen/GERMANY
DESIGNED BY STIHL -
ASSEMBLED IN CHINA

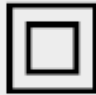


MM/YYYY

p 12.4 MPa (1800 psi)
p_{max} 15 MPa (2170 psi)
t_{in max} 40 °C (104 °F)
Q_{min} 4.5 l/min (1.2 gpm)
m 9.0 kg (19.8 lbs)

IPX5


1.5 kW
13 A
120 V
60 Hz

Conforms to
UL Std. 60335-1,
UL Std. 60335-2-79




Intertek
5019416

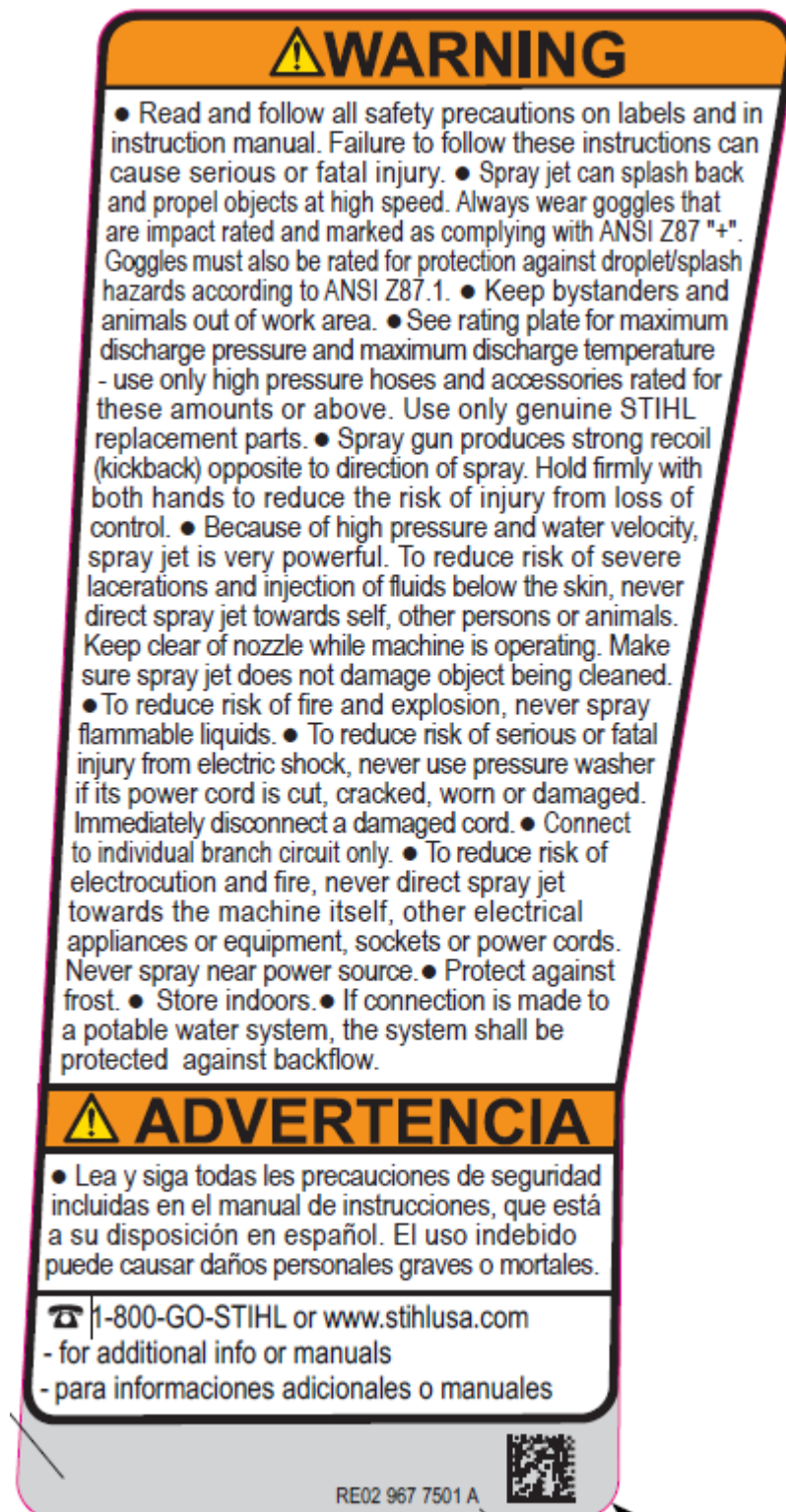
RE02 967 1832 A

This device complies with part 15 of the FCC Rules.
Operation is subject to the following two conditions:
(1) This device may not cause harmful interference, and
(2) this device must accept any interference received,
including interference that may cause undesired operation.
FCC ID: 2ALP8RE02A

BARCODE 

XXXXXXXXXX

Warning label Text



- Read and follow all safety precautions on labels and in instruction manual. Failure to follow these instructions can cause serious or fatal injury.
- Spray jet can splash back and propel objects at high speed. Always wear goggles that are impact rated and marked as complying with ANSI Z87 "+".

Goggles must also be rated for protection against droplet/splash hazards according to ANSI Z87.1. • Keep bystanders and animals out of work area. • See rating plate for maximum discharge pressure and maximum discharge temperature - use only high pressure hoses and accessories rated for these amounts or above. Use only genuine STIHL replacement parts. • Spray gun produces strong recoil (kickback) opposite to direction of spray. Hold firmly with both hands to reduce the risk of injury from loss of control. • Because of high pressure and water velocity, spray jet is very powerful. To reduce risk of severe lacerations and injection of fluids below the skin, never direct spray jet towards self, other persons or animals. Keep clear of nozzle while machine is operating. Make sure spray jet does not damage object being cleaned. • To reduce risk of fire and explosion, never spray flammable liquids. • To reduce risk of serious or fatal injury from electric shock, never use pressure washer if its power cord is cut, cracked, worn or damaged. Immediately disconnect a damaged cord. • Connect to individual branch circuit only. • To reduce risk of electrocution and fire, never direct spray jet towards the machine itself, other electrical appliances or equipment, sockets or power cords. Never spray near power source. • Protect against frost. • Store indoors. • If connection is made to a potable water system, the system shall be protected against backflow.

warning label symbols

