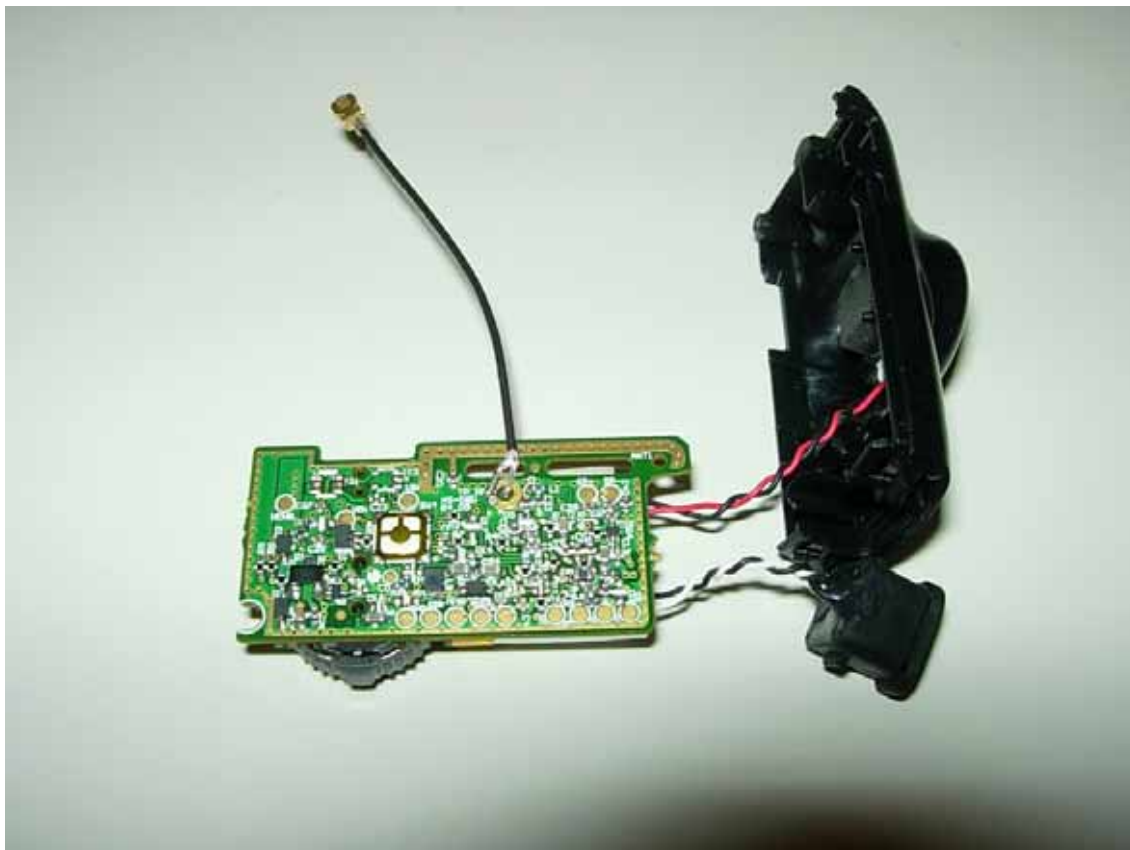


1.10 TEST ARRANGEMENT (PHOTOGRAPHS)

PHOTOGRAPHS OF THE CONDUCTED TEST

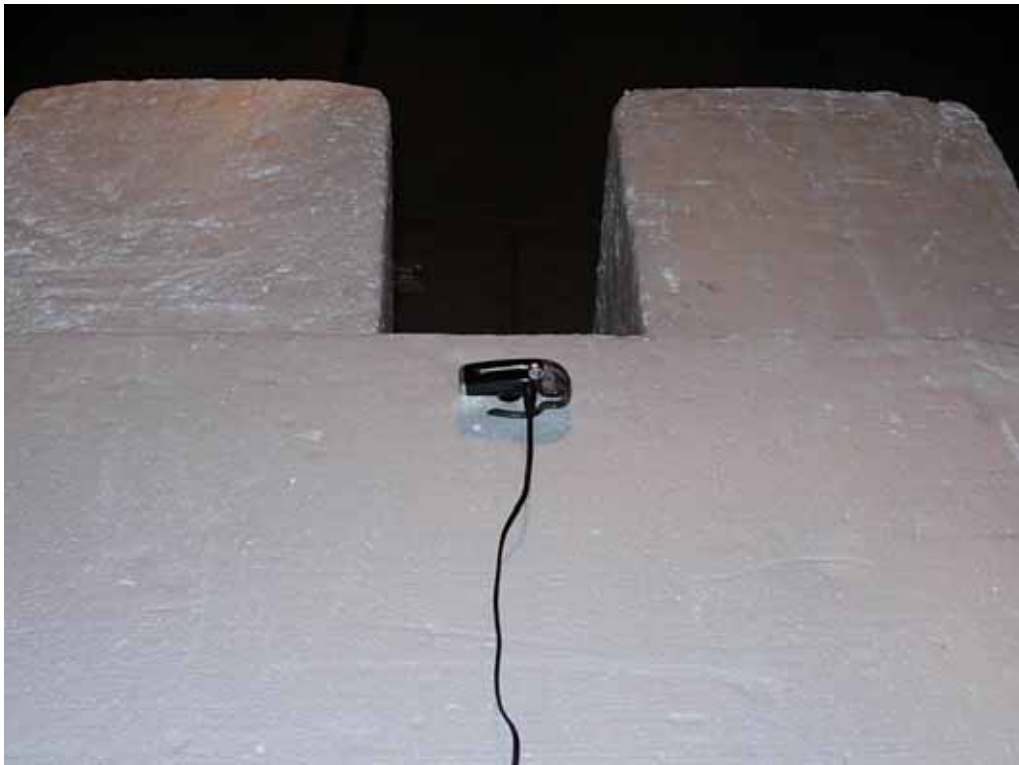


PHOTOGRAPHS OF EUT CONFIGURATION FOR RADIATED EMISSIONS MEASUREMENT

Photograph present configuration with maximum emission



- Front view (AC Adaptor operation X axis) -



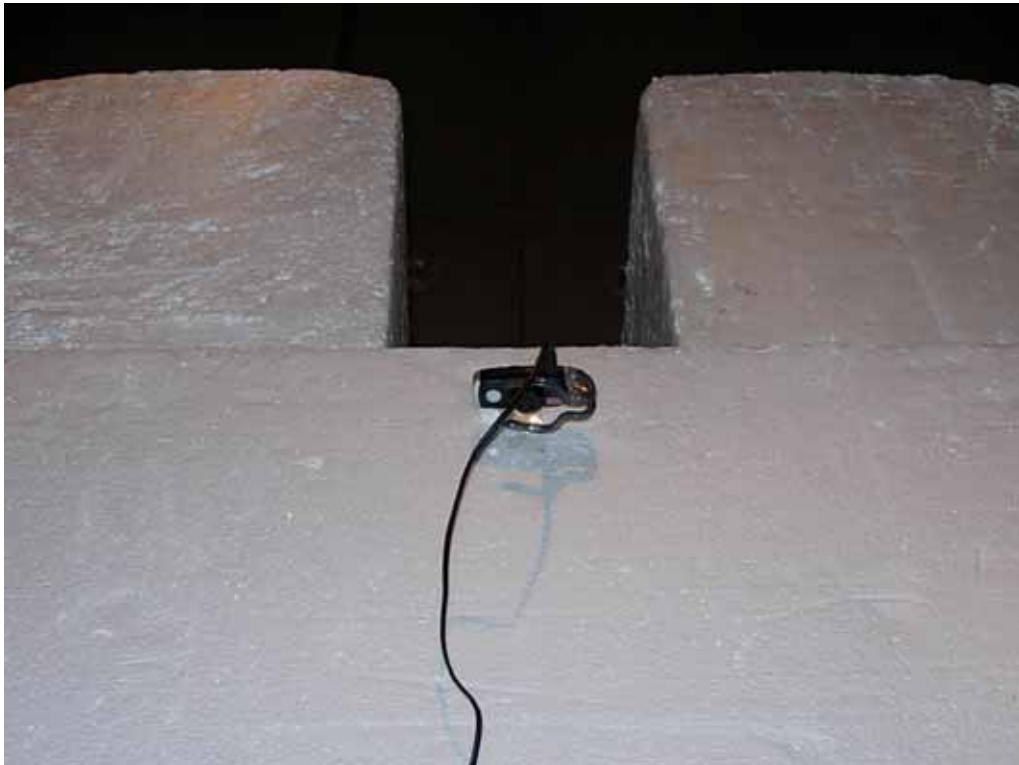
- Rear view (AC Adaptor operation X axis) -

PHOTOGRAPHS OF EUT CONFIGURATION FOR RADIATED EMISSIONS MEASUREMENT

Photograph present configuration with maximum emission



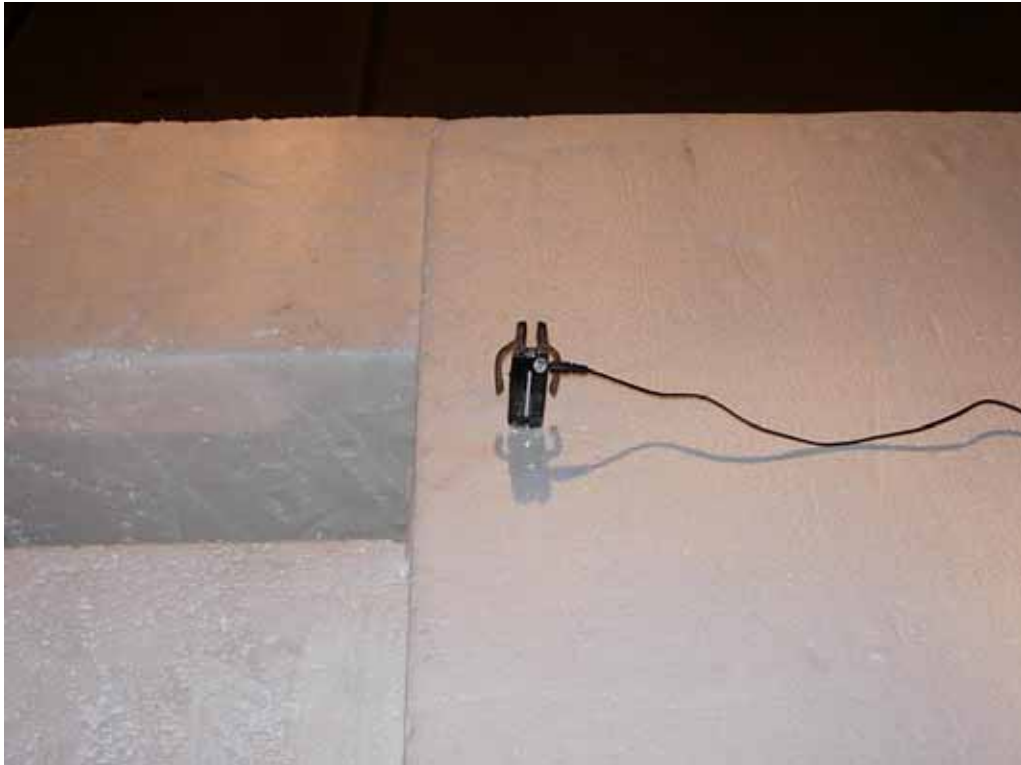
- Front view (AC Adaptor operation Y axis) -



- Rear view (AC Adaptor operation Y axis) -

PHOTOGRAPHS OF EUT CONFIGURATION FOR RADIATED EMISSIONS MEASUREMENT

Photograph present configuration with maximum emission



- Front view (AC Adaptor operation Z axis) -



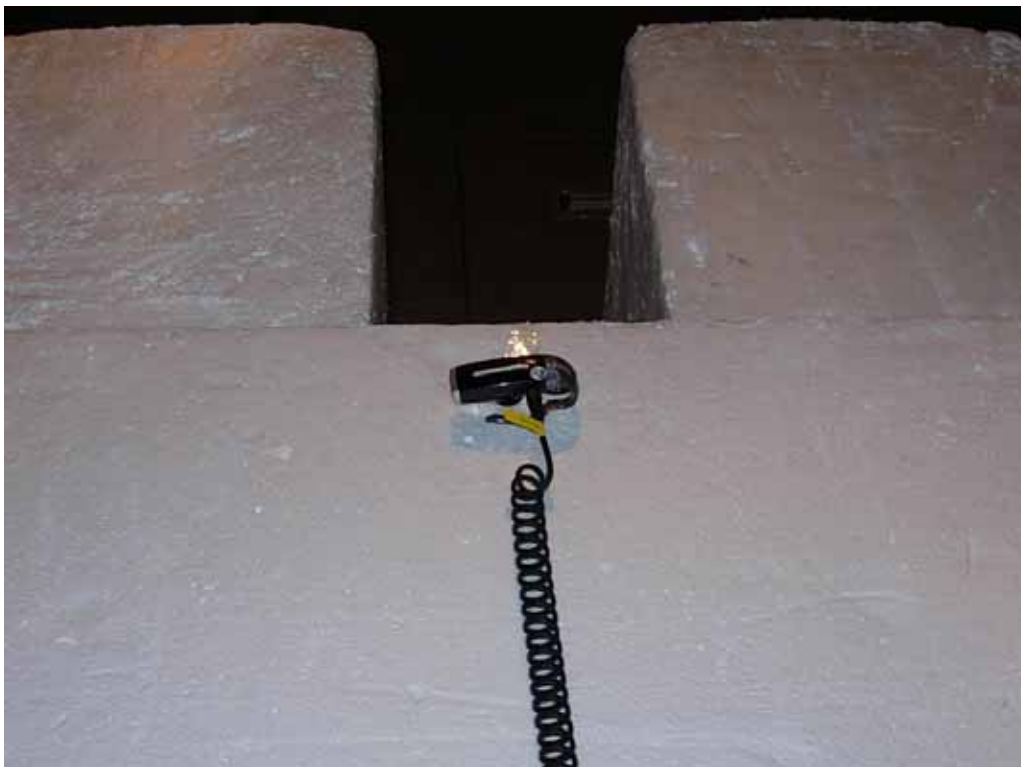
- Rear view (AC Adaptor operation Z axis) -

PHOTOGRAPHS OF EUT CONFIGURATION FOR RADIATED EMISSIONS MEASUREMENT

Photograph present configuration with maximum emission



- Front view (DC Adaptor operation X axis) -



- Rear view (DC Adaptor operation X axis) -

PHOTOGRAPHS OF EUT CONFIGURATION FOR RADIATED EMISSIONS MEASUREMENT

Photograph present configuration with maximum emission



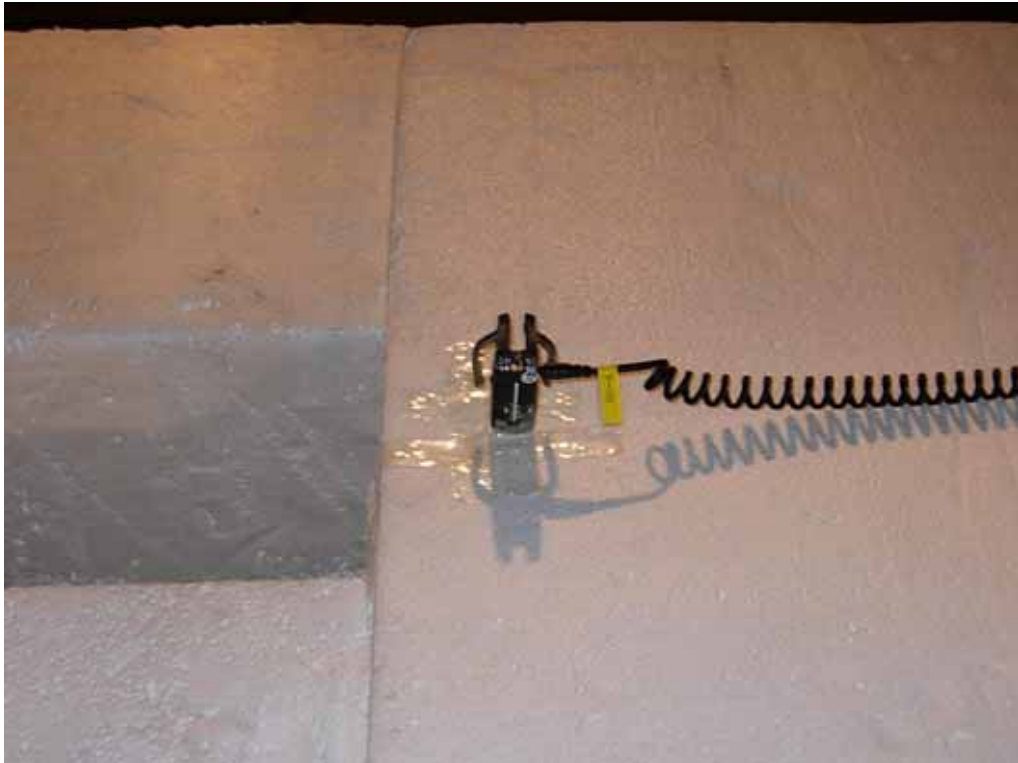
- Front view (DC Adaptor operation Y axis) -



- Rear view (DC Adaptor operation Y axis) -

PHOTOGRAPHS OF EUT CONFIGURATION FOR RADIATED EMISSIONS MEASUREMENT

Photograph present configuration with maximum emission



- Front view (DC Adaptor operation Z axis) -



- Rear view (DC Adaptor operation Z axis) -

PHOTOGRAPHS OF EUT CONFIGURATION FOR AC POWER LINE CONDUCTED EMISSION MEASUREMENT

Photograph present configuration with maximum emission



- Front view -



- Side View -