

## Signo Décor Antenna

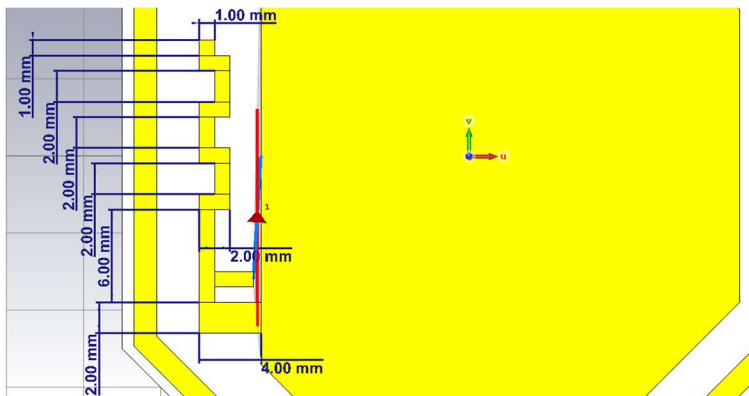
### Antenna: HF

- The antenna made up of two turns of copper PCB trace following the perimeter of the reader board, each turn being on opposite sides of the board.
- Area is 1794mm<sup>2</sup>
- Length is 322mm
- Turns is 2
- Antenna gain is 1 dBi.

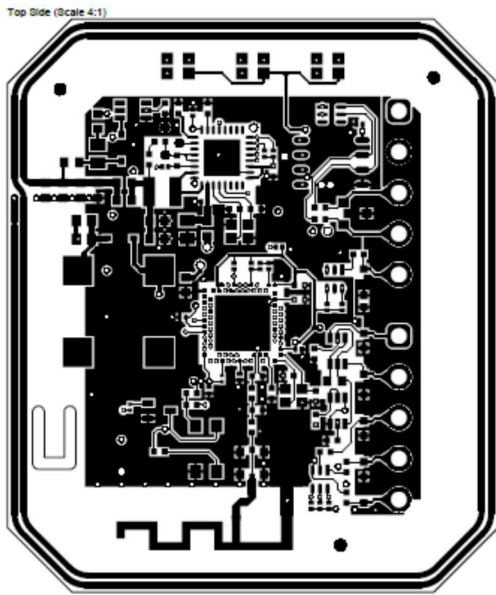
### Antenna: BLE

- The antenna is an inverted-F imbedded in the reader PCB.
- Antenna gain is -3.15 dBi

### Figures:



Dimensions of BLE antenna



Gerber of BLE inverted-F antenna and HF loop antenna