

Mobile App for Commissioning MPA2C3

User Guide

Document 800-26531 Rev_B_August 2022

Copyright© 2022 Honeywell. All rights reserved.

All product and brand names are the service marks, trademarks, registered trademarks, or registered service marks of their respective owners. Printed in the United States of America. Honeywell reserves the right to change any information in this document at any time without prior notice.

Pro-Watch® is a trademark of Honeywell, Inc.

Ordering Information

Please contact your local Honeywell representative or visit us on the web at www.honeywellintegrated.com for information about ordering.

Feedback

Honeywell appreciates your comments about this manual. Please visit us on the web at www.honeywellintegrated.com to post your comments.

TABLE OF CONTENTS

Chapter 1 - Device Utility App User Guide1

About the Guide	1
Intended Audience	1
Acronyms and Abbreviations	1
Introduction to Device Utility Mobile App	1
Getting started	2
Commissioning a New Panel	2
Discover the Panel	4
Discover the Panel with Enclosure	5
Using the Bar code scanner.....	10
Using Manual Mode.....	11
Discover the Panel Without Enclosure	11
Web Integration	18
MAXPRO Cloud Integration.....	18
WIN-PAK Integration or Mode	19
View/Edit the Setup Details (or Update the Setup Details).....	19
Configuration status	22
Sharing Configuration	24
Import Configuration	27

Chapter 2 - Mobile App FAQs.....1

Why this App?	1
How to configure the device?	1
Where are the configurations stored?	1
Why Sharing configurations?	2
What are the high level steps to scan and configure a new panel?	2
How to scan a new device?.....	2
How to Setup Time Settings?	3

How to Setup Use of Panel? 3

How to Setup Network? 3

How to share? 4

DEVICE UTILITY APP USER GUIDE

About the Guide

This guide introduces and describes how to set up and commission MPA2 access control panels using Device Utility Mobile App. The minimum requirement for the device is:

- Apple IOS 13, or higher
- Android version 6 or higher

Intended Audience

This document is intended for the Installer or field engineer installing and commissioning an MPA2 access control device.

Acronyms and Abbreviations

- MPA2-MAXPRO Access Two/Four Door Access Control panel
- MPC -MAXPRO Cloud
- DHCP- Dynamic Host Configuration Protocol
- EVL- Ethernet Virtual Loop

Introduction to Device Utility Mobile App

Device Utility App is an intuitive mobile interface to commission MPA2 panels to be used as stand-alone panel in Web mode or as panel in the MAXPRO Cloud solutions. It allows you to add the MPA2 panels and download or push the configuration via Bluetooth.

This App allows you to do the following:

Commissioning an MPA2 by:

- Securely connecting via Bluetooth

- Set up panel properties
- Set up use of panel in WEB (stand-alone), or MAXPRO CLOUD mode
- Set up time parameters
- Download set up configuration in MPA2 panel
- Store the configuration in the App to review, modify and download again
- Share securely the configuration with other App users via commonly used sharing channels

Getting Started

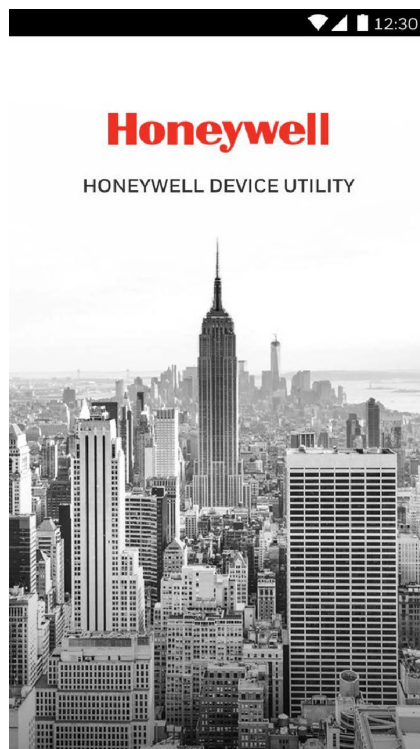
Commissioning a New Panel

Steps to Commission a new pane

Step 1. Launch the Device the Utility App

1. Tap on the Device Utility App to launch.

Home Screen



License Agreement Screen

End-User License Agreement

HONEYWELL CONNECTED RESPONDER SERVICES PRIVACY STATEMENT AND END-USER LICENSE AGREEMENT

Effective July 01, 2019

Welcome!

Below you will find Honeywell Connected Responder Services Privacy Statement and End-User License Agreement; these are legal agreements between you and Honeywell International. India Private Limited and its subsidiaries ("Honeywell") for the use of certain Honeywell services, systems, and software.

The highlights:

The Privacy Statement describes, among other things:

- Information we collect:
- Information you provide by completing your account registration; e.g. name, email, address, and zip code
- Information about how you use the system

☐

By checking this I accept that I have read and understood the agreement

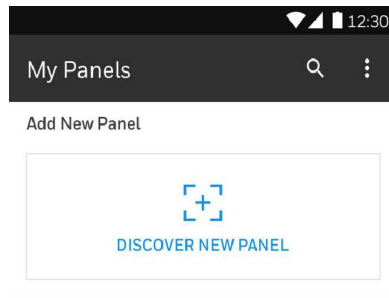
AGREE

2. Read the terms and conditions and then tap on the check box to agree.

Step 2. Discover the Panel

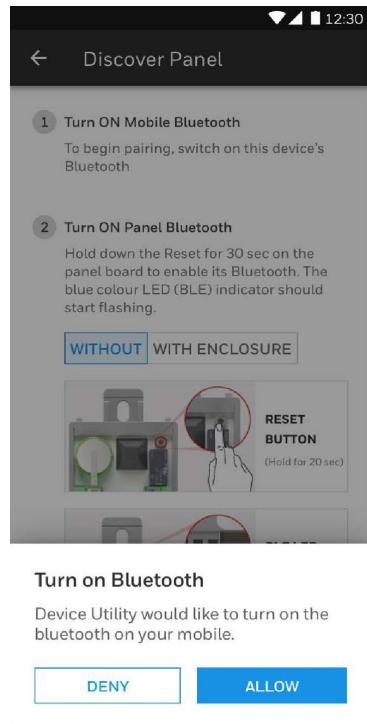
1. On the My Panels screen, tap on Discover new panel. The Discover New Panel screen is displayed.

Discover New Panel Screen

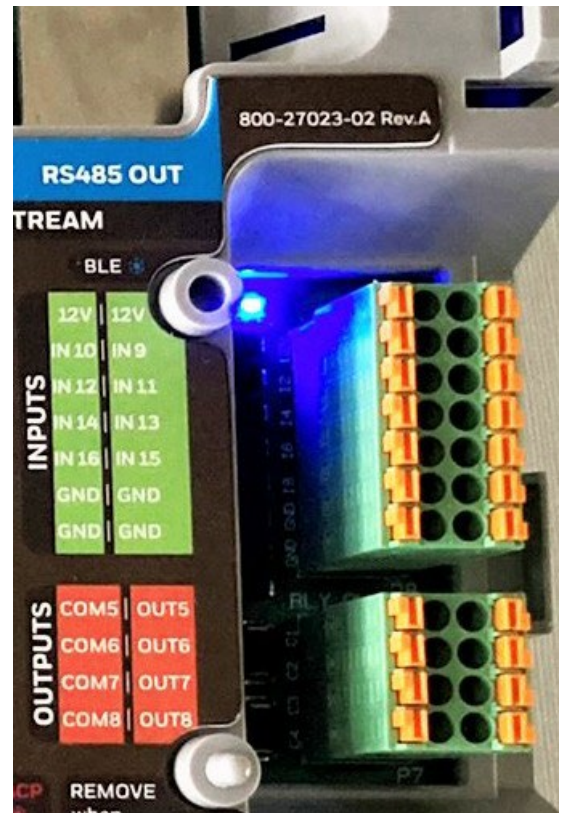


2. Turn ON the Mobile Bluetooth and then Panel Bluetooth for pairing. You can discover and pair the panel with or without Enclosure. Choose the required one

Mobile Bluetooth



Panel Bluetooth



Discover the Panel

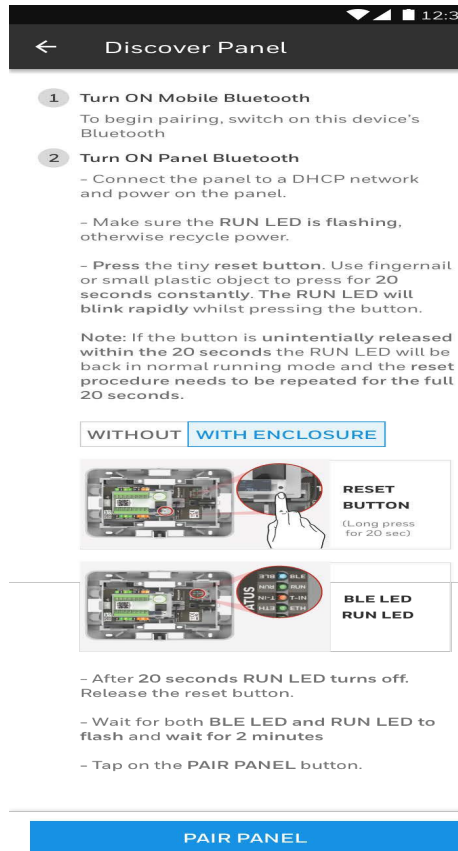
In order to discover the panel with the App, the panel must be reset.

1. Make a note of the existing settings on SW1 DIP switches.
2. While the panel is powered up, turn all of the DIP switches to the OFF position.
3. Power down; then power the panel back up.
4. Wait for the panel to come up. The **RUN LED** should flicker fast.
5. Set the DIP switches back to their original positions.
6. Power down; then power the panel back up. The RUN LED should flash normal.
7. The panel is now reset to the original factory default values.
8. The panel is ready to be discovered via Bluetooth.

Discover the Panel with Enclosure

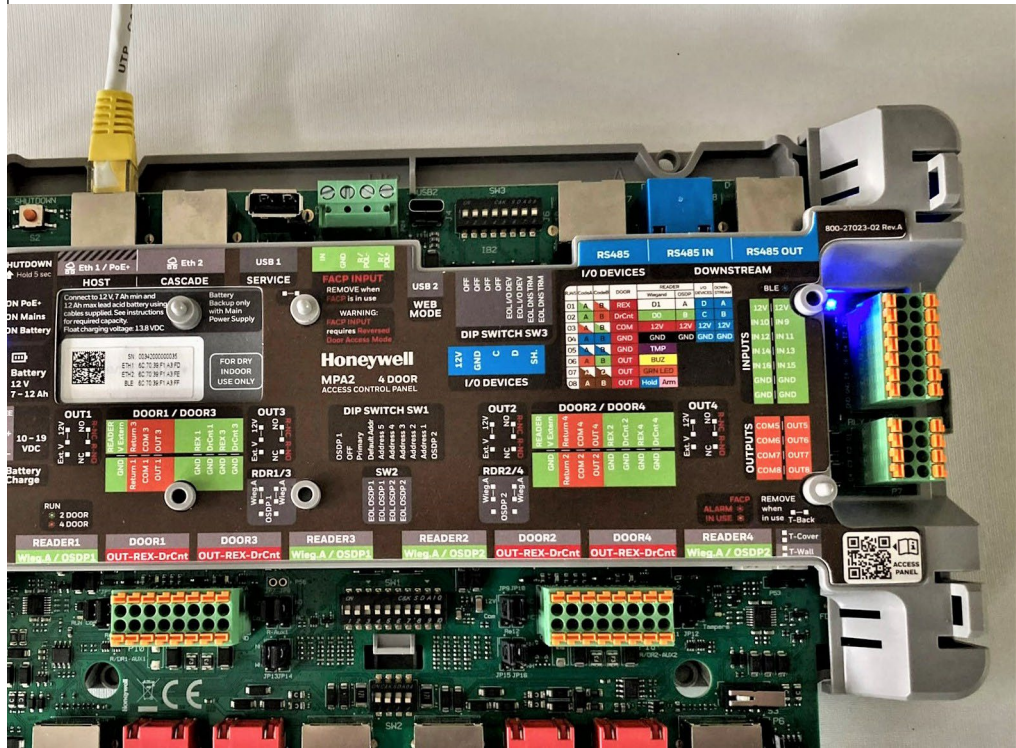
1. Tap on the With Enclosure tab. You can identify the location of the RUN LED and BLE LED in this pane.

With Enclosure

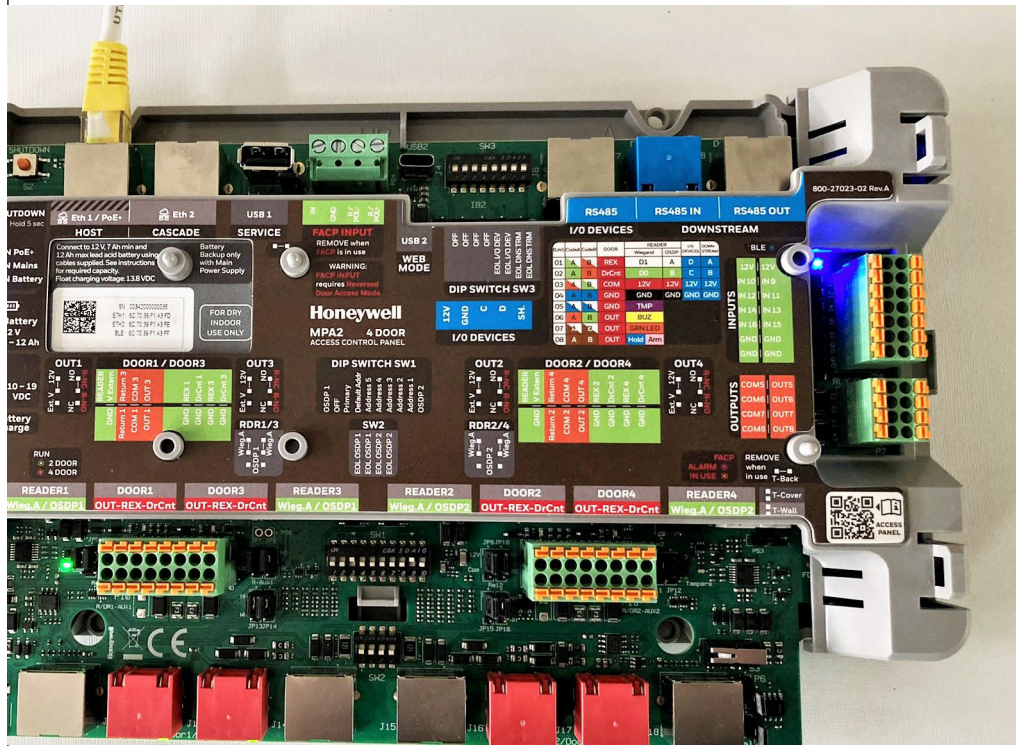


2. After the reset procedure, the BLE LED on the panel starts blinking. The RUN LED must blink slowly as well. This indicates the panel is ready to pair and send information about the panel

Panel cannot be Paired



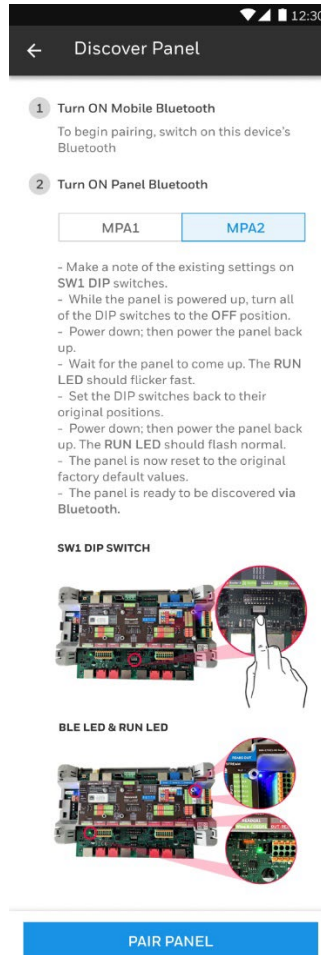
Panel can be Paired



Note: If the BLE LED is not blinking on the panel then user need to press the Reset button. The panel reboots and the BLE LED AND RUN LED start blinking. For more issues, see the FAQ section.

3. Tap on the Pair Panel button

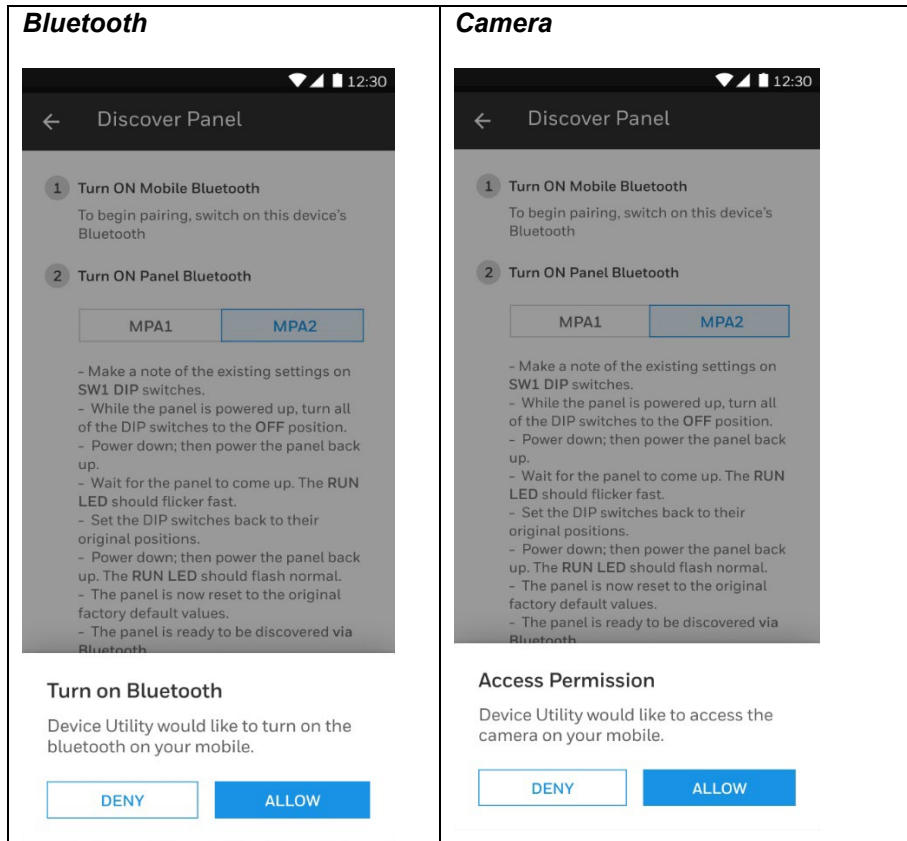
Pair Panel



4. You are prompted:

- a. To turn ON the mobile device Bluetooth if it is not turned ON. Tap Allow:

b. To allow the camera access permission. Tap Allow:

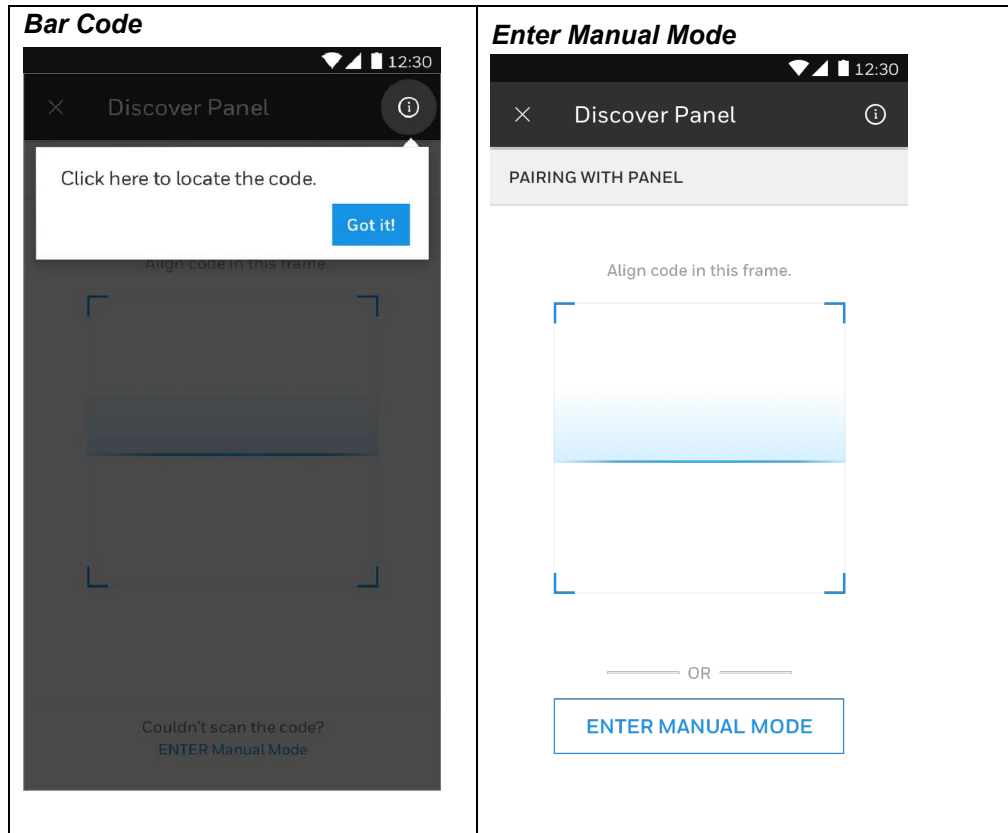


Step 3. Scan the QR code on the panel to identify and pair with the correct panel

The QR code to be scanned is located below to the Eth 1 connector on the panel where serial number and the MAC address are located

Tip: Tap Info icon to locate the QR code on the panel. A help screen is displayed with QR Code location.

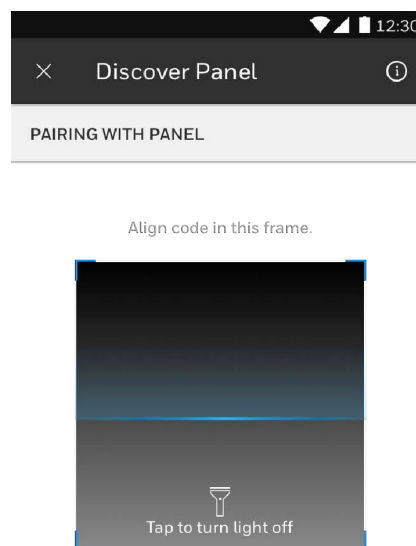
1. Tap on any one of the following:
 - b. Using the bar code scanner (default)
 - c. Manually entering the details



Using the Bar code scanner

1. Align the camera to scan the QR code
 - a. The lamp on the mobile will automatically turn on
 - b. You can turn off the lamp on the mobile

Lamp



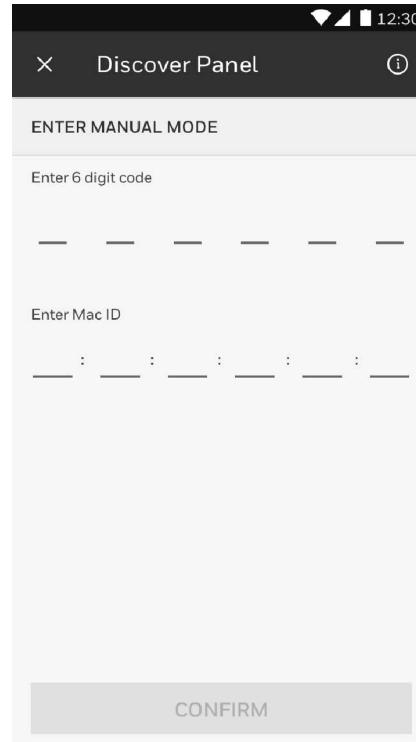
2. When a successful scan is done, the mobile will make a noise and will vibrate

Note: *The phone's sound settings for this app must be on.*

Using Manual Mode

1. When QR code scanning is not working you can enter manually the 6 digit code and MAC-ID

6 Digit Code



2. First enter the code, this can be found on the QR code label.
 - a. The code is a 6 digit Hexadecimal code. The keypad is set to fill only in this
3. Secondly enter the MAC-ID. This can be found on the QR code label, titled MAC ID.
 - a. The MAC-ID is a 12 digit Hexadecimal code. The keypad is set to fill only in this

Discover the Panel Without Enclosure

The procedure is exactly the same as “Discover the Panel With Enclosure”. The location of the QR code is on the LED side of the panel. In order to reset the panel, the Panel must be dismounted from the J-Box, which will trigger the internal tamper alarm.

Without Enclosure

← Discover Panel

12:30

1

Turn ON Mobile Bluetooth

To begin pairing, switch on this device's Bluetooth

2

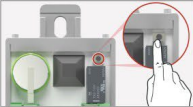
Turn ON Panel Bluetooth

For MPA1


WITHOUT

WITH ENCLOSURE

Hold down the Reset for 30 sec on the panel board to enable its Bluetooth. The blue colour LED (BLE) indicator should start flashing.



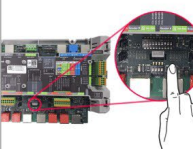
**RESET
BUTTON**
(Long press for 20 seconds)



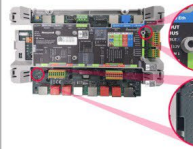
BLE LED
RUN LED

For MPA2

-Make a note of the existing settings on SW1 DIP switches.
-While the panel is powered up, turn all of the DIP switches to the OFF position.
-Power down; then power the panel back up.
-Wait for the panel to come up. The RUN LED should flicker fast.
-Set the DIP switches back to their original positions.
-Power down; then power the panel back up. The RUN LED should flash normal.
-The panel is now reset to the original factory default values.



**SW1 DIP
SWITCH**



**BLE
LED**
**RUN
LED**

PAIR PANEL

12

Document 800-26531 Rev_B_August 2022

Step 4. Add the panel basic properties

Panel Basic Properties

← MPA2-F0:54:94:00:26:24

ENTER PANEL DETAILS

Panel Name *

Site

Notes

MAC ID
F0:54:94:00:26:24

FW Version
1.0.1.1

Panel Type
MPA2

Boot Time
Thu Aug 23, 14:00:20 2022

OS Version
2.8.8

CANCEL

CONTINUE SETUP

Enter the details of the panel

1. Mandatory fields:

- a. Name: The default name will be displayed
- b. Site: Customer Site. The customer site stored to be used as default name for the next new panel.

Default Name

MPA2-F0:54:94:00:26:24

ENTER PANEL DETAILS

Panel Name *
Panel 1

Site
Building1

Notes
2F/ID room/ceiling

MAC ID
F0:54:94:00:26:24

FW Version
1.0.1.1

Panel Type
MPA2

Boot Time
Thu Aug 23, 14:00:20 2022

OS Version
2.8.8

CANCEL

CONTINUE SETUP

2. Optional field:

Note: *e.g. location of the panel*

3. Tap CONTINUE SETUP

Step 5. Setup panel

1. Determine the use of the panel and related Network setting
 - a. MAXPRO CLOUD mode (MPC: default)
 - i. Default settings are for immediate use as panel in a MPC configuration
 - ii. Scroll down to view the MPC Network settings
 - iii. DHCP Network settings (default). It is recommended not to change this setting

MPC Network Setting

Setup Use of Panel

STEP 1/2 - SETUP USE OF PANEL

MPA1 is a panel used for

WEB WIN-PAK MAXPRO CLOUD

Connect panel via "MAXPRO Cloud" only.

Server URL * [RESET](#)

<https://isom.mymaxprocloud.com/isom>

IP Address type

Static DHCP

CANCEL

SAVE AND NEXT

b. WEB Mode

- i. Setting for stand-alone use of the panel
- ii. The panel can be set up as a PRIMARY panel
 - a. This PRIMARY setting is needed to access the panel via a web browser
 - b. The network setting is now DHCP, but can be changed as a Fix IP address. When connected to a DHCP server, the current IP address, network mask and Gateway IP address will be displayed

Web Mode

← Setup Use of Panel

STEP 1/2 - SETUP USE OF PANEL

MPA1 is a panel used for

WEB WIN-PAK MAXPRO CLOUD

Connect panel via stand alone mode (web interface)

Panel Loop Function

PRIMARY **SECONDARY**

IP Address type

Static **DHCP**

CANCEL

SAVE AND NEXT

- iii. The panel can be set up as a SECONDARY panel
 - a. This is for Stand-alone networked EVL operation. A SECONDARY panel cannot be accessed by web browser. A SECONDARY panel must be added to a PRIMARY panel first in the PRIMARY panel web browser. Then the SECONDARY panel can be accessed via the PRIMARY panel web interface.
 - b. The network setting is DHCP, it is recommended to remain in DHCP mode

2. Tap **SAVE & NEXT**

Step 6. Setup Time and download to panel

1. The time for the panel will be set by default from the Mobile device: Actual Date and time, Geographical Time Zone and 12/24 hour notation
2. When turning off SYNCH WITH MOBILE, you can change 12/24 hour notation, and Geographical Time Zone

Setup Time

← Set Time

STEP 2/3 - SET TIME

SYNC WITH MOBILE ☒

Time Format

12 hr 24 hr

Time Zone

American/New_York

Time

12:30

Date

23 Aug 2022

CANCEL

SAVE AND NEXT

3. Tap **DOWNLOAD NOW**

Step 7. Download settings to the panel

1. The Panel basic properties, the panel setup and time setup will be downloaded to the panel. A progress bar will indicate the detailed progress of the download.
2. If the download is successful then the panel will restart automatically with the new setup.

<OR>

If the download fails then you can **RETRY** or tap on **TROUBLESHOOT**.

Web Integration

To connect with the web browser to a PRIMARY panel you must know the IP address of this panel. This IP address is set up by the STATIC IP Address setting in the WEB mode setup. Use Chrome and <IP_ADDRESS> to connect to the panel. Click Advanced Settings in the security page and select proceed to <IP_ADDRESS>. After a new WEB commissioning the default user is “admin” and the password “admin”.

In the web interface further the door settings, people, cards, schedules and holidays can be set up. Also the EVL setup must be done here with the SECONDARY panels.

Monitoring and control can be done from the web interface as well.

MAXPRO Cloud Integration


In MAXPRO Cloud add a new panel under the (new) customer. Select the type as MPA2. Fill in the MAC-ID from the MPA2. The panel will be registered from the MPC.

Further settings can be done on the door settings, people, cards, schedules, and holidays can be set up from the MPC interface.

From the MPC web interface and the MPC App, the panel can be monitored and controlled.

MAXPRO Cloud Integration

06:49

 Setup Use of Panel

STEP 1/2 - SETUP USE OF PANEL

MPA1 is a panel used for:

WEB

MAXPRO CLOUD

Connect panel through MAXPRO Cloud only

Server URL * [RESET](#)

https://isom.mpa.mymaxprocloud.com/isom

IP Address type

STATIC

DHCP

IP address *

192.168.10.17

Subnet Mask *

255.255.255.0

CANCEL

SAVE

WIN-PAK Integration or Mode

Win-Pak Integration

12:30

← Setup Use of Panel

STEP 1/2 - SETUP USE OF PANEL

MPA2 is a panel used for

WEB WIN-PAK MAXPRO CLOUD

Connect panel through "WIN-PAK" Only

Server URL * [RESET](#)
https://isom.mymaxprocloud.com/isom

IP Address Type

STATIC DHCP

IP Address *
192.168.10:17

IP Address *
255.255.250:0

CANCEL

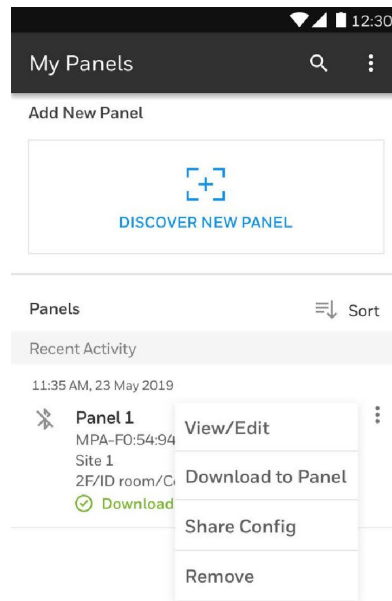
SAVE

View/Edit the Setup Details (or Update the Setup Details)

You can review or modify your created configurations.

1. Select in MY PANELS the configuration you want to review or modify
2. Tap on the 3 dots on the right, select View/Edit configuration

My Panels



3. Tap top menu to review or modify basic panel properties

Modify Basic Panel

MPA2-F0:54:94:00:26:24

Panel Name *

Panel 1

Site

Building 1

Notes

2F/ID room/ceiling

MAC ID

F0:54:94:00:26:24

FW Version

1.0.1.1

Panel Type

MPA2

Boot Time

Thu Aug 23, 14:00:20 2022

OS Version

CANCEL

SAVE

4. Tap Setup Panel to review / modify the use of panel and Network setup

Network Setup

12:30

← Setup Use of Panel

STEP 1/2 - SETUP USE OF PANEL

MPA2 is a panel used for

WEB MAXPRO CLOUD

Connect panel through "MAXPRO Cloud" Only

Server URL * [RESET](#)
https://isom.mymaxprocloud.com/isom

IP Address Type

STATIC DHCP

IP Address *
192.168.10:17

IP Address *
255.255.250:0

CANCEL

SAVE

5. Tap Setup Time to review / modify the time settings

Set Time

← Set Time

STEP 2 - SET TIME

SYNC WITH MOBILE ☒

Time Format

12 hr 24 hr

Time Zone

American/New_York

Time

12:30

Date

23 Aug 2022

CANCEL

SAVE

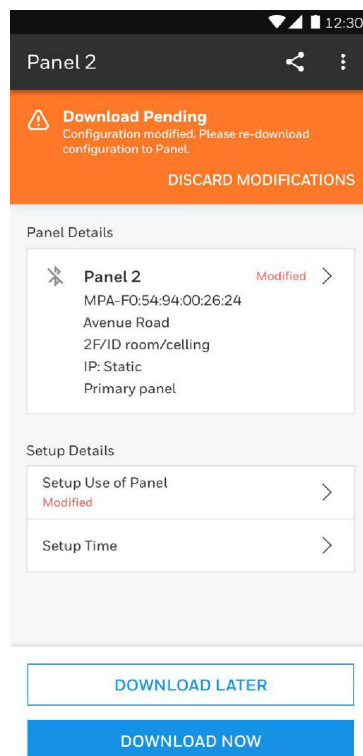
6. Tap SAVE when done, or CANCEL to discard any made changes

Configuration status

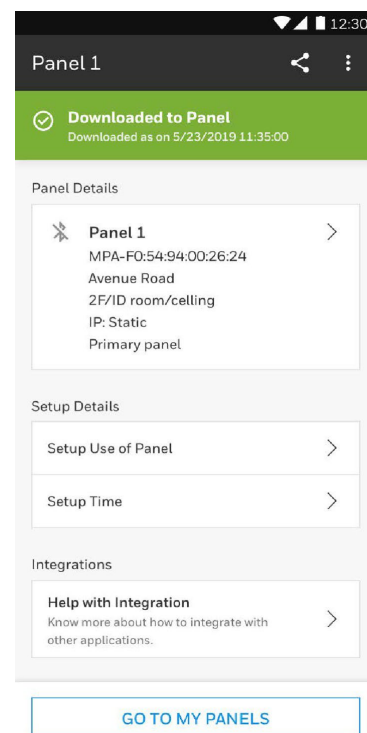
There are 3 statuses for a configuration which are displayed in MY PANELS menu.

1. Downloaded to the Panel: When a configuration has successfully been downloaded to the panel
2. Download Pending: A new configuration (DOWNLOAD LATER or download failed or cancelled) or a modified configuration has not been downloaded yet to the panel
3. Setup Incomplete: A configuration was done, but interrupted and not fully finished. Download cannot be selected, first the Configuration needs to be completed>

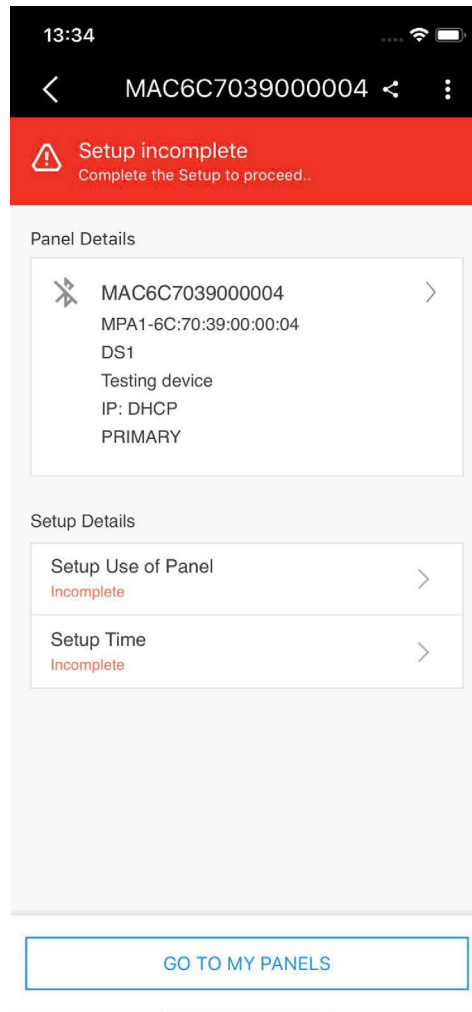
Download Pending



Downloaded to Panel



Setup Incomplete

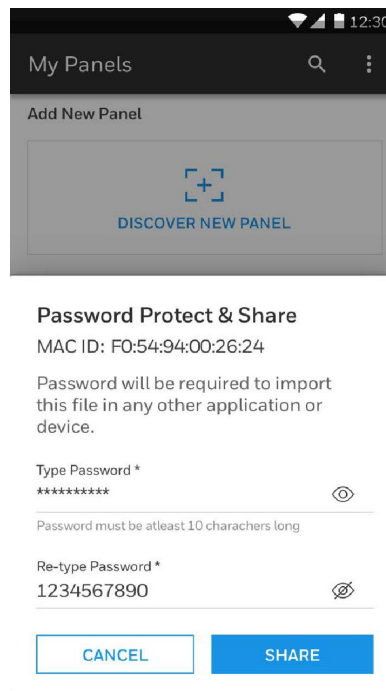


Sharing Configuration

You can share your created configurations with eg; your colleague for reviewing and modifying settings.

1. Select in MY PANELS the configuration you want to share
2. Tap on the 3 dots on the right, select Share configuration
3. Enter a passphrase and share this separately to your recipient

Password protect and Share



The image shows a mobile application interface. The top section is titled 'My Panels' and includes a search icon and a menu icon. Below this is a section labeled 'Add New Panel' with a large blue square button containing a plus sign and the text 'DISCOVER NEW PANEL'. Below this section is a 'Password Protect & Share' dialog. The dialog displays the MAC ID 'FO:54:94:00:26:24' and a warning: 'Password will be required to import this file in any other application or device.' It contains two password input fields. The first field is labeled 'Type Password *' and shows a masked password '*****' with a toggle icon. Below it is a note: 'Password must be atleast 10 charachers long'. The second field is labeled 'Re-type Password *' and shows the password '1234567890' with a toggle icon. At the bottom of the dialog are two buttons: 'CANCEL' and 'SHARE'.

My Panels

Add New Panel

DISCOVER NEW PANEL

Password Protect & Share

MAC ID: FO:54:94:00:26:24

Password will be required to import this file in any other application or device.

Type Password *

Password must be atleast 10 charachers long

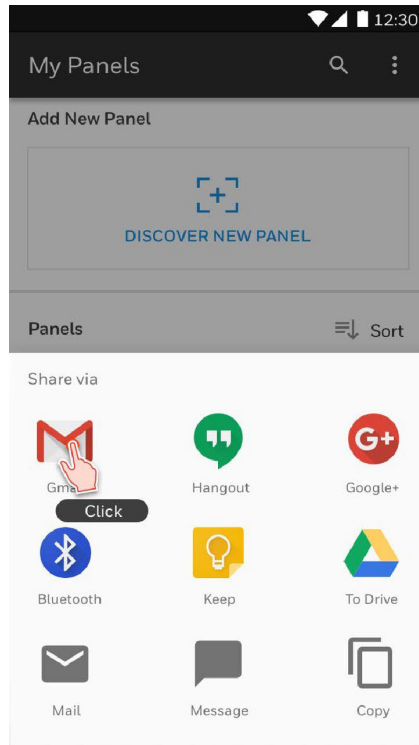
Re-type Password *

1234567890

CANCEL SHARE

4. Then select the communication channel of your choice (eg; email, Whatsapp) and send to the recipient

Sharing Configuration



Email

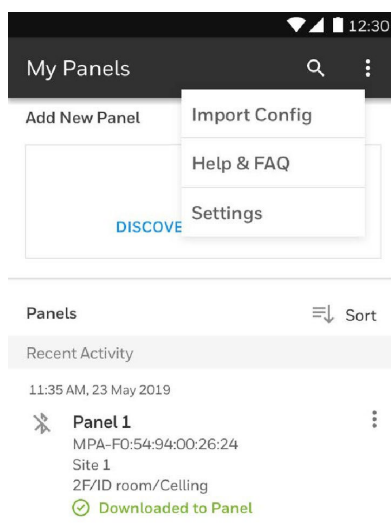


Import Configuration

You have received a configuration for MPA2 via common communication channels. You have stored the file in a folder on your mobile device. You can review the configuration in the App.

1. In the MY PANELS screen tap on the 3 dots in the upper part of the menu bar and select Import Configuration.
2. Select the file that is stored in the folder. You will be asked to enter the passphrase. The file will be opened per the correct passphrase.

Import Configure



Why this App?

This App is to configure Honeywell Security devices, such as MPA2 , for commissioning purposes.

Functions are:

1. Configure the device
2. Store the settings on the mobile device
3. Share the settings

How to configure the device?

The following steps are included for configuration of the device:

1. Discover and connect to the device
2. Enter device details
3. Enter Mode of operation and Network settings
4. Enter time settings
5. Download settings to panel

Where are the configurations stored?

The App stores to created configurations on your mobile device. Stored configurations can be:

1. Sorted in lists, per status (Downloaded, incomplete, pending), per site or date
2. Viewed / Edited
3. Removed
4. Downloaded again to the device

5. Shared with others or to WIN-PAK

Why Sharing configurations?

The App can share configurations via normal media such as Whatsapp and email.

You can share a stored configuration to others (colleagues or helpdesk) to evaluate or troubleshoot the configuration.

The receiver can make edits and send the edited configuration back to the requestor.

The configuration cannot be used as template, the configuration is specific to a discovered device.

What are the high level steps to scan and configure a new panel?

1. On the My Panels screen, tap on Discover new panel
2. Discover the panel With or Without Enclosure
3. Pair the panel with mobile: Turn on the Bluetooth of Mobile and Panel to pair.
4. Turn ON the camera to scan the QR code or manually you can enter the details of the panel
5. Enter the panel details
6. Setup the panel: Connect the panel through Web/WIN-PAK/MAXPRO CLOUD
7. Set the Time format and Time zone
8. Download the configuration

How to scan a new device?

1. Pair the panel with Mobile
2. Turn ON the camera to scan the QR code or manually you can enter the details of the panel

How to Setup Time Settings?

1. Go to My Panels screen
2. Tap on the required panel
3. Navigate to Setup Details and then tap Setup Time
4. Set the Time Format and Zone based on your location

How to Setup Use of Panel?

1. Go to My Panels screen
2. Tap on the required Panel
3. Navigate to Setup Details and then tap on Setup Use of Panel
4. Modify or enter the required panel settings and configuration

How to Setup Network?

1. Go to Panel Setup screen
2. Tap on the required panel options Web/WIN-PAK/MAXPRO Cloud
3. Perform the below steps for WIN-PAK panel
4. Tap on Direct Connection Type
5. Tap to Enable the Encryption and type the Port Number
6. Tap on Static IP Address type. Enter the Static IP Address, Subnet Mask and Gateway details
7. Tap on Save and Next

How to share?

1. Go to My Panelsscreen
2. On the required panel, tap on the Contextual menu
3. Tap Share Configure the list of sharing options are displayed
4. Tap on e.g. Gmail, perform the onscreen instructions as explained in Compose screen

Honeywell Integrated Security, 135 W. Forest Hill Avenue
Oak Creek, WI 53154, United States
800-323-4576, 414-766-1798 Fax
www.security.honeywell.com

Honeywell

**THE
FUTURE
IS
WHAT
WE
MAKE IT**

Document 800-26531 Rev B
August 2022