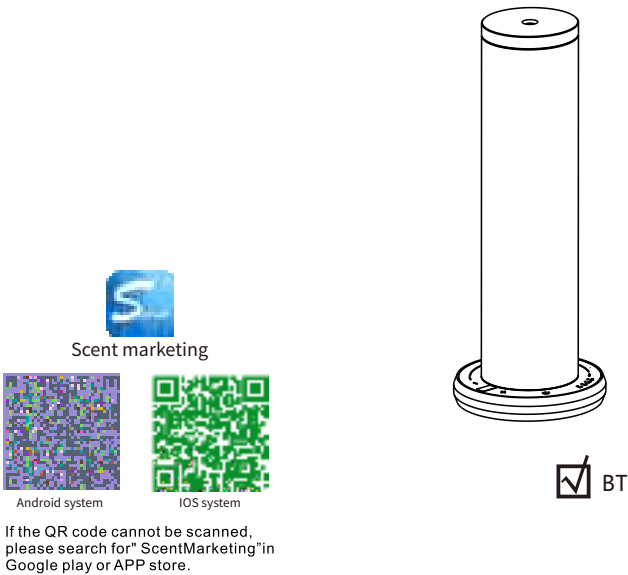


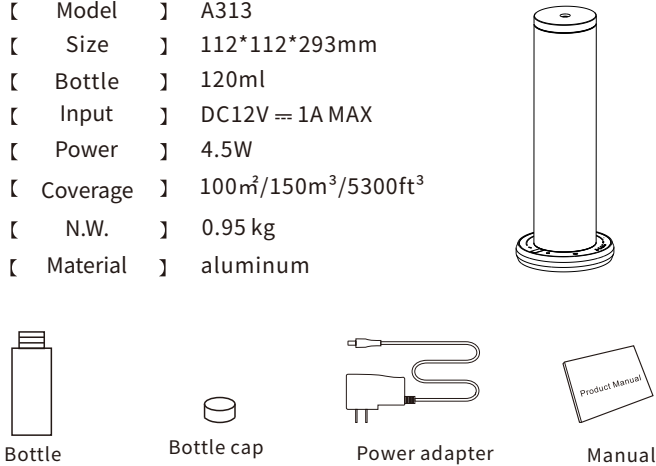
PRODUCT MANUAL

Aroma diffuser



01 Specification

- [Model] A313
- [Size] 112*112*293mm
- [Bottle] 120ml
- [Input] DC12V = 1A MAX
- [Power] 4.5W
- [Coverage] 100m²/150m³/5300ft³
- [N.W.] 0.95 kg
- [Material] aluminum

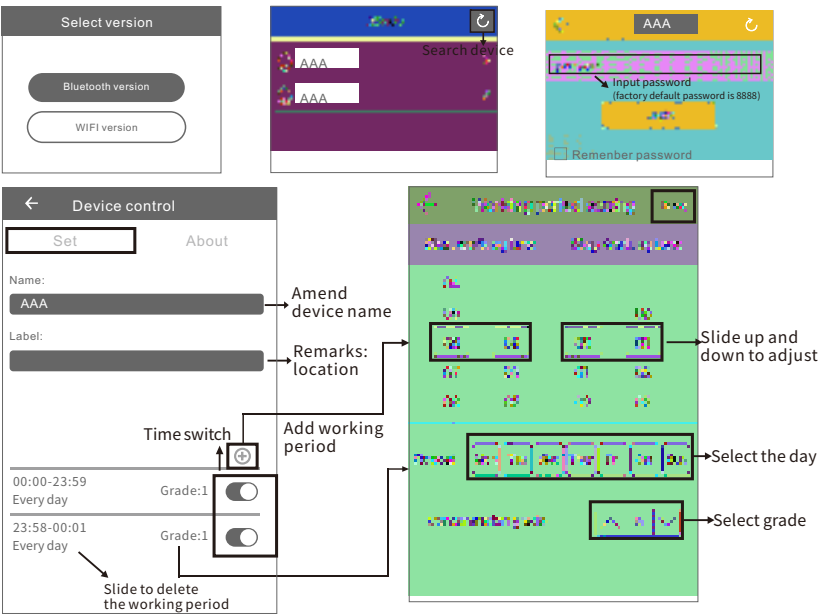


Note:
Check and make sure the packaging is complete when you first open it, If there is any problem please contact with us soon.

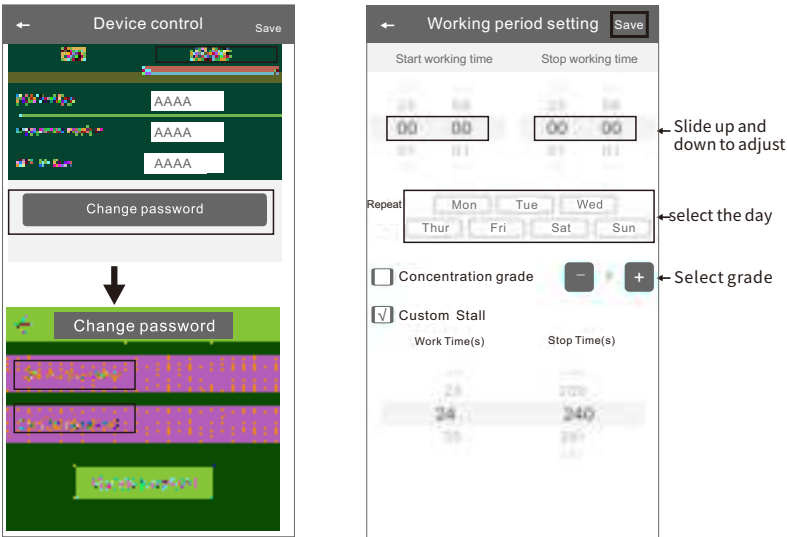
02 Bluetooth instruction

Where to get the app:
Please search for "scent marketing" in Google play or App store .

- Note:**
1. Please make sure that the Bluetooth function is turned on;
 2. Please make sure that the location function of the mobile phone is turned on.

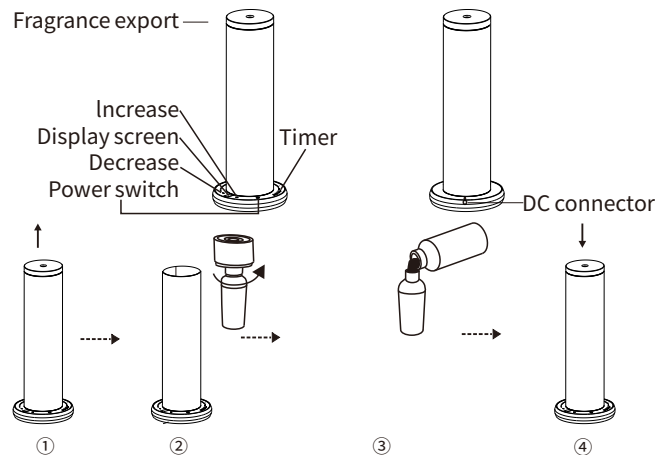


Amend password



If you forget the password, please press th on/off button to restore the factory setting.The factory settings password is 8888.

03 Installation step



1. Take out the diffuser head;
2. Twist off the bottle;
3. Fill the bottle with essential oil;
4. Put the diffuser head back in the machine.

04 Operations

power on

Connect to 12V 1A power supply, there is "beep" sound coming out.

power off

Press to turn off the machine

Intensity setting

The machine has 10 intensity levels, Press to increase the intensity, press to decrease the intensity.

Power indicator

indicates the direction of the power supply.

Timer

Press the timer button, and the settings cycle in turn, 1H->2H->4H->8H->no timer

Reset Bluetooth App password

press and hold for 3 seconds to reset password to 8888.

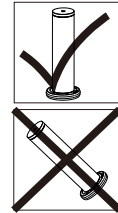
05 Intensity and oil consumption

Grade	Work time(s)	Stop time(s)	Consumption(g/h)
G1	5s	240s	0.05
G2	10s	220s	0.11
G3	15s	200s	0.18
G4	15s	180s	0.25
G5	20s	160s	0.32
G6	20s	120s	0.46
G7	25s	100s	0.60
G8	25s	80s	0.74
G9	25s	60s	0.88
Customized	5-25s	60-600s	—

Note: The data shown above is only for reference, and it is normal for consumption to fluctuate by 15%.

06 ⚠ Warning

1. Please keep the machine vertical after installation. Tilting or lying flat can cause oil to overflow, and the circuit board may be contaminated, which could affect its efficiency;
2. Should not modify, dismantle or repair the machine arbitrarily. Any malfunction occurs, please contact the relevant technician immediately.



07 Troubleshooting

Before asking to have the machine repaired, please try to diagnose the problem first based on the following instructions.

Breakdown	Solution
No diffuse	- Check if the power is ON or OFF; - Check if the pump is damaged, if yes, please replace a new one. - If there is no diffusion or it is weak, replace the oil by rubbing alcohol and run it through the machine for 5 minutes.
Weak diffusion	- Atomization head may be blocked. Clean the diffuser by alcohol or replace a new atomized core - The atomized core with straw may be missed or damaged. Replace with a new one; - The Pump may be damaged and may need to replace with a new one
Oil sprinkle	- The atomized core may be damaged, please replace with a new one - The machine is tilted or lay flat, please make it upright.
Oil leakage	- The bottle may be loose, make sure to screw it properly. - The seal gasket may be loose, please replace with a new one
Abnormal sound	- The air pump may be loose or damaged, please tighten it or replace a new one.
No display on screen	- Make sure the power is ON; - The plug may be damaged, try another electric outlet, or replace with a new plug - The display screen may be damaged, please contact our relevant personnel

08 Equipment cleaning

The machine needs to be cleaned when the following situations happen:

1. You're about to replace with another essential oil;
2. The atomization volume becomes weak.

Cleaning steps:

1. Find a clean bottle and fill it with industrial alcohol;
2. Install this bottle to the machine and turn the machine on.
Let it work for 5-10 minutes;
3. Turn the machine off, and the cleaning is finished

FCC Statement

This device complies with part 15 of the FCC Rules. Operation is subject to the following two conditions:

- (1) This device may not cause harmful interference, and
- (2) this device must accept any interference received, including interference that may cause undesired operation.

This equipment has been tested and found to comply with the limits for a Class B digital device, pursuant to part 15 of the FCC Rules. These limits are designed to provide reasonable protection against harmful interference in a residential installation. This equipment generates, uses and can radiate radio frequency energy and, if not installed and used in accordance with the instructions, may cause harmful interference to radio communications. However, there is no guarantee that interference will not occur in a particular installation. If this equipment does cause harmful interference to radio or television reception, which can be determined by turning the equipment off and on, the user is encouraged to try to correct the interference by one or more of the following measures:

- Reorient or relocate the receiving antenna.
- Increase the separation between the equipment and receiver.
- Connect the equipment into an outlet on a circuit different from that to which the receiver is connected.
- Consult the dealer or an experienced radio/TV technician for help.

FCC Caution: Any changes or modifications not expressly approved by the party responsible for compliance could void the user's authority to operate the equipment. This transmitter must not be co-located or operating in conjunction with any other antenna or transmitter.

Not applicable

RF Exposure

This device complies with FCC radiation exposure limits set forth for an uncontrolled environment. This equipment should be installed and operated with minimum distance 20cm between the radiator & your body.