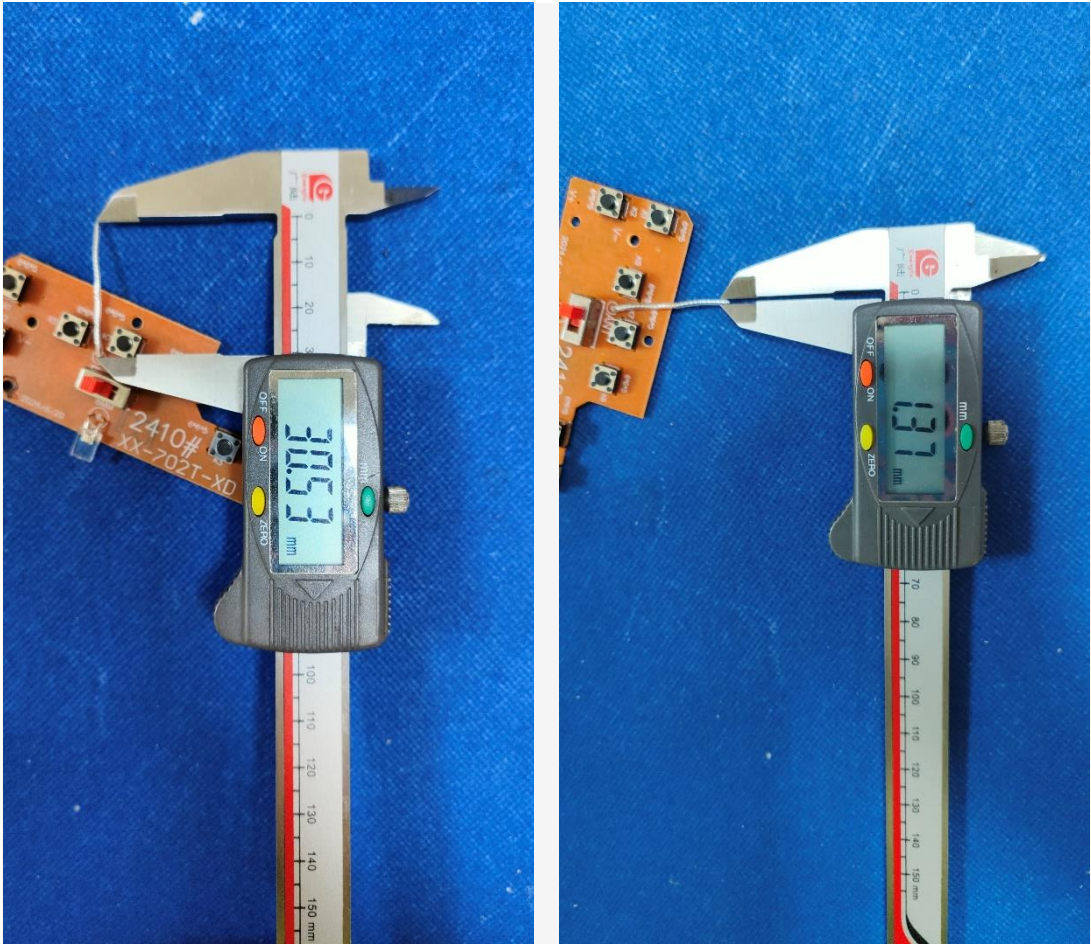


# 1. Antenna Description:

|                 |   |
|-----------------|---|
| Antenna type    | Internal antenna  |
| Model           | 2401  |
| Frequency range | 2400-2500MHz  |
| Manufacturer    | Shantou Xiaodi Intelligent Technology Co., Ltd  |
| Address         | WEST INDUSTRIAL ZONE, OLD NATIONAL ROAD,<br>LIANXIA TOWN, CHENGHAI DISTRICT, SHANTOU, China |
| ANT Peak Gain   | 0.98 dBi  |

# 2. Antenna Photo:

Length:30.53mm  
Width:1.37mm



### 3. Test Equipment & Conditions

#### 3.1 Test instrument

VSWR is tested using Agilent E5071B connected to a hand mechanism, and the status is free space.

#### 3.2 Test environment and methods

Dark room specifications: ETS-743

TD-SCDMA test equipment: StarPoint SP6010/Agilent 8960

LTE-TDD/FDD-SCDMA test equipment: StarPoint SP8011/CMW500

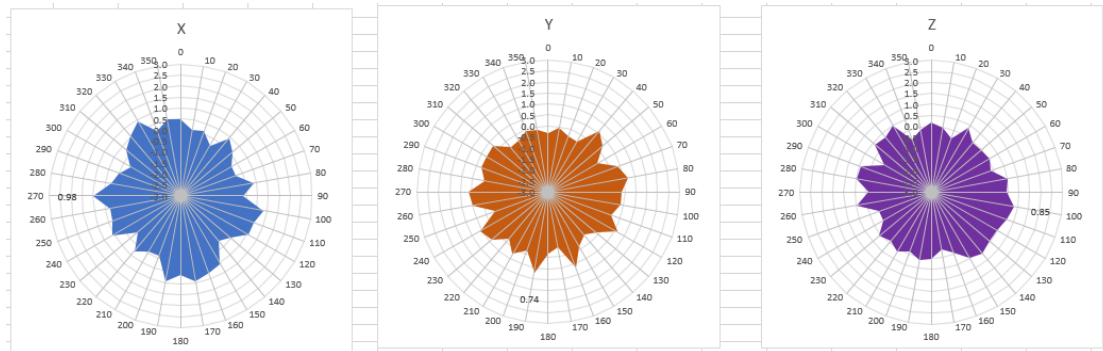
WCDMA/GSM/CDMA test equipment: Agilent 8960

Passive efficiency testing equipment: Agilent Technologies E5071B

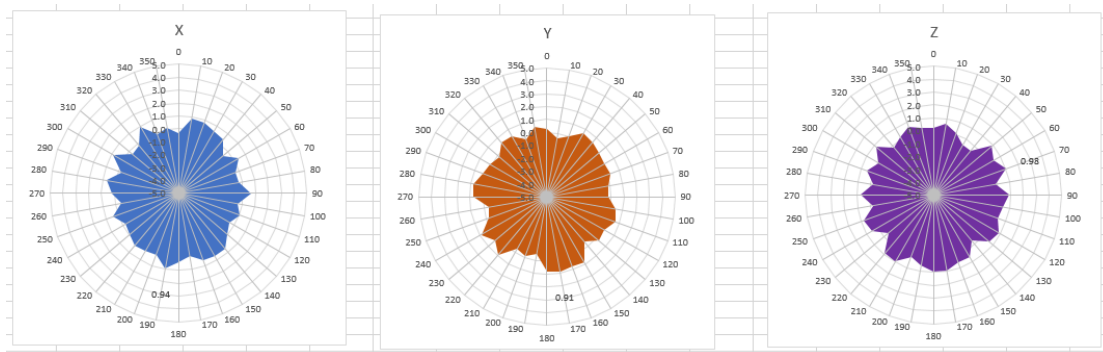


## 4 . Antenna Radiation Pattern

2400MHz



2450MHz



2500MHz

