

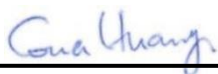
FCC SAR TEST REPORT

FCC ID : PU5AX201D2
Equipment : WLAN and BT, 2x2 PCIe M.2 1216 SD adapter card
Brand Name : Intel® Wi-Fi 6 AX201
Model Name : AX201D2W
Applicant : Wistron Corporation
21F, No. 88, Sec. 1, Hsin Tai Wu Rd.,
Hsichih Dist, New Taipei City 221, Taiwan
Manufacturer : Wistron Corporation
21F, No. 88, Sec. 1, Hsin Tai Wu Rd.,
Hsichih Dist, New Taipei City 221, Taiwan
Standard : FCC 47 CFR Part 2 (2.1093)

Equipment: Intel AX201D2W tested inside of Lenovo Notebook Computer

The product was received on Sep. 29, 2020 and testing was started from Oct. 22, 2020 and completed on Nov. 09, 2020. We, SPORTON INTERNATIONAL INC., would like to declare that the tested sample provide by manufacturer and the test data has been evaluated in accordance with the test procedures given in 47 CFR Part 2.1093 and FCC KDB and has been pass the FCC requirement.

The test results in this report apply exclusively to the tested model / sample. Without written approval of SPORTON INTERNATIONAL INC. EMC & Wireless Communications Laboratory, the test report shall not be reproduced except in full.



Approved by: Cona Huang / Deputy Manager

SPORTON INTERNATIONAL INC. EMC & Wireless Communications Laboratory



Table of Contents

1. Statement of Compliance	4
2. Guidance Applied.....	4
3. Equipment Under Test (EUT) Information.....	5
3.1 General Information	5
4. RF Exposure Limits.....	6
4.1 Uncontrolled Environment.....	6
4.2 Controlled Environment.....	6
5. Specific Absorption Rate (SAR).....	7
5.1 Introduction	7
5.2 SAR Definition.....	7
6. System Description and Setup	8
6.1 Test Site Location.....	8
6.2 E-Field Probe	9
6.3 Data Acquisition Electronics (DAE)	9
6.4 Phantom.....	10
6.5 Device Holder.....	11
7. Measurement Procedures	12
7.1 Spatial Peak SAR Evaluation.....	12
7.2 Power Reference Measurement.....	13
7.3 Area Scan	13
7.4 Zoom Scan.....	14
7.5 Volume Scan Procedures.....	14
7.6 Power Drift Monitoring.....	14
8. Test Equipment List.....	15
9. System Verification	16
9.1 Tissue Simulating Liquids.....	16
9.2 Tissue Verification	17
9.3 System Performance Check Results.....	18
10. RF Exposure Positions	18
10.1 SAR Testing for Tablet.....	18
11. WiFi/Bluetooth Output Power (Unit: dBm).....	19
12. SAR Test Results	30
12.1 Body SAR	31
12.2 Repeated SAR Measurement	32
13. Simultaneous Transmission Analysis.....	33
13.1 Body Exposure Conditions.....	33
13.2 SPLSR Evaluation and Analysis.....	34
14. Uncertainty Assessment	35
15. References.....	35
Appendix A. Plots of System Performance Check	
Appendix B. Plots of High SAR Measurement	
Appendix C. DASY Calibration Certificate	
Appendix D. Antenna Location & Test Setup Photos	

History of this test report

Report No.	Version	Description	Issued Date
FA0D0217	01	Initial issue of report	Dec. 16, 2020

1. Statement of Compliance

The maximum results of Specific Absorption Rate (SAR) found during testing for Wistron Corporation, WLAN and BT, 2x2 PCIe M.2 1216 SD adapter card, AX201D2W, are as follows.

Equipment Class	Frequency Band		Highest SAR Summary	Highest Simultaneous Transmission 1g SAR (W/kg)
			Body (Separation 0mm)	
			1g SAR (W/kg)	
DTS	WLAN	2.4GHz WLAN	1.19	1.45
NII		5GHz WLAN	1.11	1.56
DSS	2.4GHz Band	Bluetooth	0.49	1.56
Date of Testing:			2020/10/22 ~ 2020/11/9	

Sporton Lab is accredited to ISO 17025 by Taiwan Accreditation Foundation (TAF code: 1190) and the FCC designation No. TW1190 under the FCC 2.948(e) by Mutual Recognition Agreement (MRA) in FCC test.(FCC).This device is in compliance with Specific Absorption Rate (SAR) for general population/uncontrolled exposure limits (1.6 W/kg) specified in FCC 47 CFR part 2 (2.1093) and ANSI/IEEE C95.1-1992, and had been tested in accordance with the measurement methods and procedures specified in IEEE 1528-2013 and FCC KDB publications.

Reviewed by: Jason Wang
Report Producer: Daisy Peng

2. Guidance Applied

The Specific Absorption Rate (SAR) testing specification, method, and procedure for this device is in accordance with the following standards, the below KDB standard may not including in the TAF code without accreditation.

- FCC 47 CFR Part 2 (2.1093)
- ANSI/IEEE C95.1-1992
- IEEE 1528-2013
- FCC KDB 865664 D01 SAR Measurement 100 MHz to 6 GHz v01r04
- FCC KDB 865664 D02 SAR Reporting v01r02
- FCC KDB 447498 D01 General RF Exposure Guidance v06
- FCC KDB 248227 D01 802.11 Wi-Fi SAR v02r02
- FCC KDB 616217 D04 SAR for laptop and tablets v01r02

3. Equipment Under Test (EUT) Information

3.1 General Information

Product Feature & Specification	
Equipment Name	WLAN and BT, 2x2 PCIe M.2 1216 SD adapter card
Brand Name	Intel® Wi-Fi 6 AX201
Model Name	AX201D2W
FCC ID	PU5AX201D2
IMEI Code	015550002948138
S/N	1S4810G6010023000057
Wireless Technology and Frequency Range	WLAN 2.4GHz Band: 2400 MHz ~ 2483.5 MHz WLAN 5.2GHz Band: 5150 MHz ~ 5250 MHz WLAN 5.3GHz Band: 5250 MHz ~ 5350 MHz WLAN 5.6GHz Band: 5470 MHz ~ 5725 MHz WLAN 5.8GHz Band: 5725 MHz ~ 5825 MHz Bluetooth: 2400 MHz ~ 2483.5 MHz
Mode	WLAN: 802.11a/b/g/n/ac/ax HT20/HT40/VHT20/VHT40/VHT80/VHT160/HE20/HE40/HE80/HE160 Bluetooth BR/EDR/LE
EUT Stage	Production Unit
Remark:	
1. This device is convertible type notebook PC, and there are two mode as usage way, one is laptop mode, another is tablet mode.	

Host Information	
Equipment Name	Notebook Computer
Brand Name	Lenovo
Model Name	TP00111A

Antenna Information					
Antenna 3 (WLAN + WWAN)	Manufacturer	WNC			
	Antenna Type	Tx1:PIFA Antenna		Tx2:PIFA Antenna	
	Part number	025.901O0.0001		025.901NZ.0001	
	Peak gain (dbi)	Tx1 Antenna :		Tx2 Antenna :	
		WLAN(2.4G):	0.87 dBi	BT/WLAN(2.4G):	0.97 dBi
		WLAN(5G B1):	2.71 dBi	WLAN(5G B1):	2.61 dBi
		WLAN(5G B2):	2.71 dBi	WLAN(5G B2):	2.70 dBi
		WLAN(5G B3):	2.70 dBi	WLAN(5G B3):	2.63 dBi
		WLAN(5G B4):	0.77 dBi	WLAN(5G B4):	2.59 dBi

4. RF Exposure Limits

4.1 Uncontrolled Environment

Uncontrolled Environments are defined as locations where there is the exposure of individuals who have no knowledge or control of their exposure. The general population/uncontrolled exposure limits are applicable to situations in which the general public may be exposed or in which persons who are exposed as a consequence of their employment may not be made fully aware of the potential for exposure or cannot exercise control over their exposure. Members of the general public would come under this category when exposure is not employment-related; for example, in the case of a wireless transmitter that exposes persons in its vicinity.

4.2 Controlled Environment

Controlled Environments are defined as locations where there is exposure that may be incurred by persons who are aware of the potential for exposure, (i.e. as a result of employment or occupation). In general, occupational/controlled exposure limits are applicable to situations in which persons are exposed as a consequence of their employment, who have been made fully aware of the potential for exposure and can exercise control over their exposure. The exposure category is also applicable when the exposure is of a transient nature due to incidental passage through a location where the exposure levels may be higher than the general population/uncontrolled limits, but the exposed person is fully aware of the potential for exposure and can exercise control over his or her exposure by leaving the area or by some other appropriate means.

Limits for Occupational/Controlled Exposure (W/kg)

Whole-Body	Partial-Body	Hands, Wrists, Feet and Ankles
0.4	8.0	20.0

Limits for General Population/Uncontrolled Exposure (W/kg)

Whole-Body	Partial-Body	Hands, Wrists, Feet and Ankles
0.08	1.6	4.0

1. Whole-Body SAR is averaged over the entire body, partial-body SAR is averaged over any 1gram of tissue defined as a tissue volume in the shape of a cube. SAR for hands, wrists, feet and ankles is averaged over any 10 grams of tissue defined as a tissue volume in the shape of a cube.

5. Specific Absorption Rate (SAR)

5.1 Introduction

SAR is related to the rate at which energy is absorbed per unit mass in an object exposed to a radio field. The SAR distribution in a biological body is complicated and is usually carried out by experimental techniques or numerical modeling. The standard recommends limits for two tiers of groups, occupational/controlled and general population/uncontrolled, based on a person's awareness and ability to exercise control over his or her exposure. In general, occupational/controlled exposure limits are higher than the limits for general population/uncontrolled.

5.2 SAR Definition

The SAR definition is the time derivative (rate) of the incremental energy (dW) absorbed by (dissipated in) an incremental mass (dm) contained in a volume element (dv) of a given density (ρ). The equation description is as below:

$$SAR = \frac{d}{dt} \left(\frac{dW}{dm} \right) = \frac{d}{dt} \left(\frac{dW}{\rho dv} \right)$$

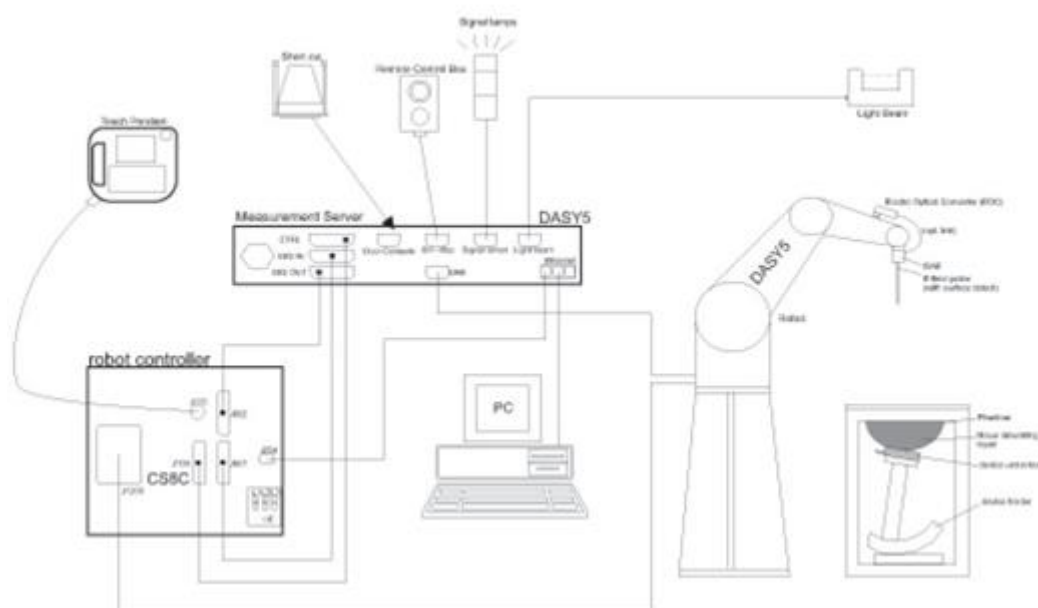
SAR is expressed in units of Watts per kilogram (W/kg)

$$SAR = \frac{\sigma |E|^2}{\rho}$$

Where: σ is the conductivity of the tissue, ρ is the mass density of the tissue and E is the RMS electrical field strength.

6. System Description and Setup

The DASY system used for performing compliance tests consists of the following items:



- A standard high precision 6-axis robot with controller, teach pendant and software. An arm extension for accommodating the data acquisition electronics (DAE).
- An isotropic Field probe optimized and calibrated for the targeted measurement.
- A data acquisition electronics (DAE) which performs the signal amplification, signal multiplexing, AD-conversion, offset measurements, mechanical surface detection, collision detection, etc. The unit is battery powered with standard or rechargeable batteries. The signal is optically transmitted to the EOC.
- The Electro-optical converter (EOC) performs the conversion from optical to electrical signals for the digital communication to the DAE. To use optical surface detection, a special version of the EOC is required. The EOC signal is transmitted to the measurement server.
- The function of the measurement server is to perform the time critical tasks such as signal filtering, control of the robot operation and fast movement interrupts.
- The Light Beam used is for probe alignment. This improves the (absolute) accuracy of the probe positioning.
- A computer running WinXP or Win7 and the DASY5 software.
- Remote control and teach pendant as well as additional circuitry for robot safety such as warning lamps, etc.
- The phantom, the device holder and other accessories according to the targeted measurement.

6.1 Test Site Location


The SAR measurement facilities used to collect data are within Sporton Lab and below test site location are accredited to ISO 17025 by Taiwan Accreditation Foundation (TAF code: 1190 and 0007) and the FCC designation No. TW1190 and TW0007 under the FCC 2.948(e) by Mutual Recognition Agreement (MRA) in FCC test.

Test Site	SPORTON INTERNATIONAL INC. EMC & Wireless Communications Laboratory			
Test Site Location	TW1190 No. 52, Huaya 1st Rd., Guishan Dist., Taoyuan City 333, CHINESE TAIPEI		TW0007 No. 58, Aly. 75, Ln. 564, Wehnuia 3rd, Rd., Guishan Dist., Taoyuan City, CHINESE TAIPEI	
	SAR01-HY	SAR03-HY	SAR08-HY	SAR09-HY
Test Site No.	SAR04-HY	SAR05-HY	SAR11-HY	SAR12-HY
	SAR06-HY	SAR10-HY		


6.2 E-Field Probe

The SAR measurement is conducted with the dosimetric probe (manufactured by SPEAG). The probe is specially designed and calibrated for use in liquid with high permittivity. The dosimetric probe has special calibration in liquid at different frequency. This probe has a built in optical surface detection system to prevent from collision with phantom.

<ES3DV3 Probe>

Construction	Symmetric design with triangular core Interleaved sensors Built-in shielding against static charges PEEK enclosure material (resistant to organic solvents, e.g., DGBE)	
Frequency	10 MHz – 4 GHz; Linearity: ± 0.2 dB (30 MHz – 4 GHz)	
Directivity	± 0.2 dB in TSL (rotation around probe axis) ± 0.3 dB in TSL (rotation normal to probe axis)	
Dynamic Range	5 μ W/g – >100 mW/g; Linearity: ± 0.2 dB	
Dimensions	Overall length: 337 mm (tip: 20 mm) Tip diameter: 3.9 mm (body: 12 mm) Distance from probe tip to dipole centers: 3.0 mm	

<EX3DV4 Probe>

Construction	Symmetric design with triangular core Built-in shielding against static charges PEEK enclosure material (resistant to organic solvents, e.g., DGBE)	
Frequency	10 MHz – >6 GHz Linearity: ± 0.2 dB (30 MHz – 6 GHz)	
Directivity	± 0.3 dB in TSL (rotation around probe axis) ± 0.5 dB in TSL (rotation normal to probe axis)	
Dynamic Range	10 μ W/g – >100 mW/g Linearity: ± 0.2 dB (noise: typically <1 μ W/g)	
Dimensions	Overall length: 337 mm (tip: 20 mm) Tip diameter: 2.5 mm (body: 12 mm) Typical distance from probe tip to dipole centers: 1 mm	

6.3 Data Acquisition Electronics (DAE)

The data acquisition electronics (DAE) consists of a highly sensitive electrometer-grade preamplifier with auto-zeroing, a channel and gain-switching multiplexer, a fast 16 bit AD-converter and a command decoder and control logic unit. Transmission to the measurement server is accomplished through an optical downlink for data and status information as well as an optical uplink for commands and the clock.

The input impedance of the DAE is 200 MOhm; the inputs are symmetrical and floating. Common mode rejection is above 80 dB.

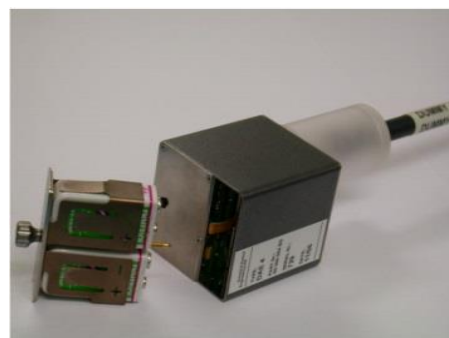



Fig 5.1 Photo of DAE


6.4 Phantom

<SAM Twin Phantom>

Shell Thickness	2 ± 0.2 mm; Center ear point: 6 ± 0.2 mm	
Filling Volume	Approx. 25 liters	
Dimensions	Length: 1000 mm; Width: 500 mm; Height: adjustable feet	
Measurement Areas	Left Hand, Right Hand, Flat Phantom	

The bottom plate contains three pair of bolts for locking the device holder. The device holder positions are adjusted to the standard measurement positions in the three sections. A white cover is provided to tap the phantom during off-periods to prevent water evaporation and changes in the liquid parameters. On the phantom top, three reference markers are provided to identify the phantom position with respect to the robot.

<ELI Phantom>

Shell Thickness	2 ± 0.2 mm (sagging: <1%)	
Filling Volume	Approx. 30 liters	
Dimensions	Major ellipse axis: 600 mm Minor axis: 400 mm	

The ELI phantom is intended for compliance testing of handheld and body-mounted wireless devices in the frequency range of 30 MHz to 6 GHz. ELI4 is fully compatible with standard and all known tissue simulating liquids.

6.5 Device Holder

<Mounting Device for Hand-Held Transmitter>

In combination with the Twin SAM V5.0/V5.0c or ELI phantoms, the Mounting Device for Hand-Held Transmitters enables rotation of the mounted transmitter device to specified spherical coordinates. At the heads, the rotation axis is at the ear opening. Transmitter devices can be easily and accurately positioned according to IEC 62209-1, IEEE 1528, FCC, or other specifications. The device holder can be locked for positioning at different phantom sections (left head, right head, flat). And upgrade kit to Mounting Device to enable easy mounting of wider devices like big smart-phones, e-books, small tablets, etc. It holds devices with width up to 140 mm.



Mounting Device for Hand-Held Transmitters



Mounting Device Adaptor for Wide-Phones

<Mounting Device for Laptops and other Body-Worn Transmitters>

The extension is lightweight and made of POM, acrylic glass and foam. It fits easily on the upper part of the mounting device in place of the phone positioned. The extension is fully compatible with the SAM Twin and ELI phantoms.



Mounting Device for Laptops

7. Measurement Procedures

The measurement procedures are as follows:

<Conducted power measurement>

- (a) For WWAN power measurement, use base station simulator to configure EUT WWAN transmission in conducted connection with RF cable, at maximum power in each supported wireless interface and frequency band.
- (b) Read the WWAN RF power level from the base station simulator.
- (c) For WLAN/BT power measurement, use engineering software to configure EUT WLAN/BT continuously transmission, at maximum RF power in each supported wireless interface and frequency band
- (d) Connect EUT RF port through RF cable to the power meter, and measure WLAN/BT output power

<SAR measurement>

- (a) Use base station simulator to configure EUT WWAN transmission in radiated connection, and engineering software to configure EUT WLAN/BT continuously transmission, at maximum RF power, in the highest power channel.
- (b) Place the EUT in the positions as Appendix D demonstrates.
- (c) Set scan area, grid size and other setting on the DASY software.
- (d) Measure SAR results for the highest power channel on each testing position.
- (e) Find out the largest SAR result on these testing positions of each band
- (f) Measure SAR results for other channels in worst SAR testing position if the reported SAR of highest power channel is larger than 0.8 W/kg

According to the test standard, the recommended procedure for assessing the peak spatial-average SAR value consists of the following steps:

- (a) Power reference measurement
- (b) Area scan
- (c) Zoom scan
- (d) Power drift measurement

7.1 Spatial Peak SAR Evaluation

The procedure for spatial peak SAR evaluation has been implemented according to the test standard. It can be conducted for 1g and 10g, as well as for user-specific masses. The DASY software includes all numerical procedures necessary to evaluate the spatial peak SAR value.

The base for the evaluation is a "cube" measurement. The measured volume must include the 1g and 10g cubes with the highest averaged SAR values. For that purpose, the center of the measured volume is aligned to the interpolated peak SAR value of a previously performed area scan.

The entire evaluation of the spatial peak values is performed within the post-processing engine (SEMCAD). The system always gives the maximum values for the 1g and 10g cubes. The algorithm to find the cube with highest averaged SAR is divided into the following stages:

- (a) Extraction of the measured data (grid and values) from the Zoom Scan
- (b) Calculation of the SAR value at every measurement point based on all stored data (A/D values and measurement parameters)
- (c) Generation of a high-resolution mesh within the measured volume
- (d) Interpolation of all measured values from the measurement grid to the high-resolution grid
- (e) Extrapolation of the entire 3-D field distribution to the phantom surface over the distance from sensor to surface
- (f) Calculation of the averaged SAR within masses of 1g and 10g

7.2 Power Reference Measurement

The Power Reference Measurement and Power Drift Measurements are for monitoring the power drift of the device under test in the batch process. The minimum distance of probe sensors to surface determines the closest measurement point to phantom surface. This distance cannot be smaller than the distance of sensor calibration points to probe tip as defined in the probe properties.

7.3 Area Scan

The area scan is used as a fast scan in two dimensions to find the area of high field values, before doing a fine measurement around the hot spot. The sophisticated interpolation routines implemented in DASY software can find the maximum found in the scanned area, within a range of the global maximum. The range (in dB) is specified in the standards for compliance testing. For example, a 2 dB range is required in IEEE standard 1528 and IEC 62209 standards, whereby 3 dB is a requirement when compliance is assessed in accordance with the ARIB standard (Japan), if only one zoom scan follows the area scan, then only the absolute maximum will be taken as reference. For cases where multiple maximums are detected, the number of zoom scans has to be increased accordingly.

Area scan parameters extracted from FCC KDB 865664 D01v01r04 SAR measurement 100 MHz to 6 GHz.

	≤ 3 GHz	> 3 GHz
Maximum distance from closest measurement point (geometric center of probe sensors) to phantom surface	5 ± 1 mm	$\frac{1}{2} \cdot \delta \cdot \ln(2) \pm 0.5$ mm
Maximum probe angle from probe axis to phantom surface normal at the measurement location	$30^\circ \pm 1^\circ$	$20^\circ \pm 1^\circ$
Maximum area scan spatial resolution: Δx_{Area} , Δy_{Area}	≤ 2 GHz: ≤ 15 mm $2 - 3$ GHz: ≤ 12 mm	$3 - 4$ GHz: ≤ 12 mm $4 - 6$ GHz: ≤ 10 mm
	When the x or y dimension of the test device, in the measurement plane orientation, is smaller than the above, the measurement resolution must be \leq the corresponding x or y dimension of the test device with at least one measurement point on the test device.	

7.4 Zoom Scan

Zoom scans are used to assess the peak spatial SAR values within a cubic averaging volume containing 1 gram and 10 gram of simulated tissue. The zoom scan measures points (refer to table below) within a cube whose base faces are centered on the maxima found in a preceding area scan job within the same procedure. When the measurement is done, the zoom scan evaluates the averaged SAR for 1 gram and 10 gram and displays these values next to the job's label.

Zoom scan parameters extracted from FCC KDB 865664 D01v01r04 SAR measurement 100 MHz to 6 GHz.

			≤ 3 GHz	> 3 GHz
Maximum zoom scan spatial resolution: $\Delta x_{\text{Zoom}}, \Delta y_{\text{Zoom}}$			≤ 2 GHz: ≤ 8 mm 2 – 3 GHz: ≤ 5 mm*	3 – 4 GHz: ≤ 5 mm* 4 – 6 GHz: ≤ 4 mm*
Maximum zoom scan spatial resolution, normal to phantom surface	uniform grid: $\Delta z_{\text{Zoom}}(n)$		≤ 5 mm	3 – 4 GHz: ≤ 4 mm 4 – 5 GHz: ≤ 3 mm 5 – 6 GHz: ≤ 2 mm
	graded grid	$\Delta z_{\text{Zoom}}(1)$: between 1 st two points closest to phantom surface	≤ 4 mm	3 – 4 GHz: ≤ 3 mm 4 – 5 GHz: ≤ 2.5 mm 5 – 6 GHz: ≤ 2 mm
		$\Delta z_{\text{Zoom}}(n>1)$: between subsequent points	$\leq 1.5 \cdot \Delta z_{\text{Zoom}}(n-1)$	
Minimum zoom scan volume	x, y, z		≥ 30 mm	3 – 4 GHz: ≥ 28 mm 4 – 5 GHz: ≥ 25 mm 5 – 6 GHz: ≥ 22 mm
Note: δ is the penetration depth of a plane-wave at normal incidence to the tissue medium; see draft standard IEEE P1528-2011 for details.				
* When zoom scan is required and the <i>reported</i> SAR from the <i>area scan based 1-g SAR estimation</i> procedures of KDB 447498 is ≤ 1.4 W/kg, ≤ 8 mm, ≤ 7 mm and ≤ 5 mm zoom scan resolution may be applied, respectively, for 2 GHz to 3 GHz, 3 GHz to 4 GHz and 4 GHz to 6 GHz.				

7.5 Volume Scan Procedures

The volume scan is used to assess overlapping SAR distributions for antennas transmitting in different frequency bands. It is equivalent to an oversized zoom scan used in standalone measurements. The measurement volume will be used to enclose all the simultaneous transmitting antennas. For antennas transmitting simultaneously in different frequency bands, the volume scan is measured separately in each frequency band. In order to sum correctly to compute the 1g aggregate SAR, the EUT remain in the same test position for all measurements and all volume scan use the same spatial resolution and grid spacing. When all volume scan were completed, the software, SEMCAD postprocessor can combine and subsequently superpose these measurement data to calculating the multiband SAR.

7.6 Power Drift Monitoring

All SAR testing is under the EUT install full charged battery and transmit maximum output power. In DASYS measurement software, the power reference measurement and power drift measurement procedures are used for monitoring the power drift of EUT during SAR test. Both these procedures measure the field at a specified reference position before and after the SAR testing. The software will calculate the field difference in dB. If the power drifts more than 5%, the SAR will be retested.

8. Test Equipment List

Manufacturer	Name of Equipment	Type/Model	Serial Number	Calibration	
				Last Cal.	Due Date
SPEAG	2450MHz System Validation Kit ⁽²⁾	D2450V2	736	Aug. 31, 2018	Aug. 28, 2021
SPEAG	5GHz System Validation Kit ⁽²⁾	D5GHzV2	1006	Sep. 27, 2018	Sep. 24, 2021
SPEAG	5GHz System Validation Kit	D5GHzV2	1128	Dec. 16, 2019	Dec. 15, 2020
SPEAG	Data Acquisition Electronics	DAE4	376	Dec. 06, 2019	Dec. 05, 2020
SPEAG	Data Acquisition Electronics	DAE3	495	Jul. 21, 2020	Jul. 20, 2021
SPEAG	Data Acquisition Electronics	DAE4	699	Feb. 26, 2020	Feb. 25, 2021
SPEAG	Data Acquisition Electronics	DAE4	916	Dec. 17, 2019	Dec. 16, 2020
SPEAG	Data Acquisition Electronics	DAE4	1399	Feb. 18, 2020	Feb. 17, 2021
SPEAG	Dosimetric E-Field Probe	ES3DV3	3169	May. 27, 2020	May. 26, 2021
SPEAG	Dosimetric E-Field Probe	ES3DV3	3184	Sep. 23, 2020	Sep. 22, 2021
SPEAG	Dosimetric E-Field Probe	EX3DV4	3642	Apr. 29, 2020	Apr. 28, 2021
SPEAG	Dosimetric E-Field Probe	EX3DV4	3728	Feb. 04, 2020	Feb. 03, 2021
SPEAG	Dosimetric E-Field Probe	EX3DV4	7306	Jul. 24, 2020	Jul. 23, 2021
SPEAG	Dosimetric E-Field Probe	EX3DV4	7590	Apr. 14, 2020	Apr. 13, 2021
RCPTWN	Thermometer	HTC-1	TM685-1	Nov. 12, 2019	Nov. 11, 2020
RCPTWN	Thermometer	HTC-1	TM560-2	Nov. 12, 2019	Nov. 11, 2020
R&S	BT Base Station	CBT	100815	Feb. 15, 2020	Feb. 14, 2021
SPEAG	Device Holder	N/A	N/A	N/A	N/A
Anritsu	Signal Generator	MG3710A	6201502524	Nov. 20, 2019	Nov. 19, 2020
Keysight	ENA Network Analyzer	E5071C	MY46101588	Jun. 10, 2020	Jun. 09, 2021
SPEAG	Dielectric Probe Kit	DAK-3.5	1126	Sep. 16, 2020	Sep. 15, 2021
LINE SEIKI	Digital Thermometer	DTM3000-spezial	2942	Nov. 18, 2019	Nov. 17, 2020
Anritsu	Power Meter	ML2495A	1419002	Aug. 19, 2020	Aug. 18, 2021
Anritsu	Power Sensor	MA2411B	1911176	Aug. 18, 2020	Aug. 17, 2021
Anritsu	Power Meter	ML2495A	1804003	Oct. 21, 2020	Oct. 20, 2021
Anritsu	Power Sensor	MA2411B	1726150	Oct. 21, 2020	Oct. 20, 2021
Anritsu	Spectrum Analyzer	MS2830A	6201396378	Jun. 30, 2020	Jun. 29, 2021
Anritsu	Spectrum Analyzer	N9010A	MY53470118	Mar. 12, 2020	Mar. 11, 2021
Mini-Circuits	Power Amplifier	ZVE-8G+	6418	Oct. 21, 2020	Oct. 20, 2021
Mini-Circuits	Power Amplifier	ZVE-8G+	479102029	Aug. 26, 2020	Aug. 25, 2021
ATM	Dual Directional Coupler	C122H-10	P610410z-02	Note 1	
Woken	Attenuator 1	WK0602-XX	N/A	Note 1	
PE	Attenuator 2	PE7005-10	N/A	Note 1	
PE	Attenuator 3	PE7005- 3	N/A	Note 1	

General Note:

1. Prior to system verification and validation, the path loss from the signal generator to the system check source and the power meter, which includes the amplifier, cable, attenuator and directional coupler, was measured by the network analyzer. The reading of the power meter was offset by the path loss difference between the path to the power meter and the path to the system check source to monitor the actual power level fed to the system check source.
2. The dipole calibration interval can be extended to 3 years with justification according to KDB 865664 D01. The dipoles are also not physically damaged, or repaired during the interval. The justification data in appendix C can be found which the return loss is < -20dB, within 20% of prior calibration, the impedance is within 5 ohm of prior calibration for each dipole.

9. System Verification

9.1 Tissue Simulating Liquids

For the measurement of the field distribution inside the SAM phantom with DASY, the phantom must be filled with around 25 liters of homogeneous body tissue simulating liquid. For head SAR testing, the liquid height from the ear reference point (ERP) of the phantom to the liquid top surface is larger than 15 cm, which is shown in Fig. 10.1. For body SAR testing, the liquid height from the center of the flat phantom to the liquid top surface is larger than 15 cm, which is shown in Fig. 10.2.

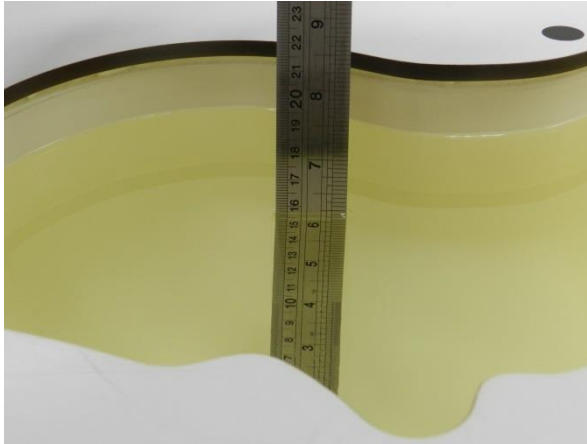


Fig 10.1 Photo of Liquid Height for Head SAR

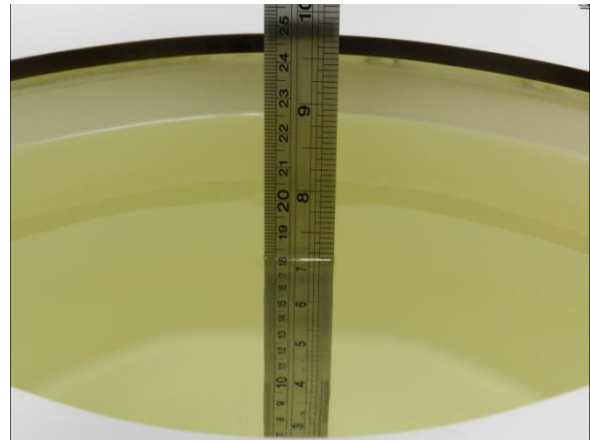


Fig 10.2 Photo of Liquid Height for Body SAR

9.2 Tissue Verification

The following tissue formulations are provided for reference only as some of the parameters have not been thoroughly verified. The composition of ingredients may be modified accordingly to achieve the desired target tissue parameters required for routine SAR evaluation.

Frequency (MHz)	Water (%)	Sugar (%)	Cellulose (%)	Salt (%)	Preventol (%)	DGBE (%)	Conductivity (σ)	Permittivity (ϵ_r)
750	41.1	57.0	0.2	1.4	0.2	0	0.89	41.9
835	40.3	57.9	0.2	1.4	0.2	0	0.90	41.5
900	40.3	57.9	0.2	1.4	0.2	0	0.97	41.5
1800, 1900, 2000	55.2	0	0	0.3	0	44.5	1.40	40.0
2450	55.0	0	0	0	0	45.0	1.80	39.2
2600	54.8	0	0	0.1	0	45.1	1.96	39.0

Simulating Liquid for 5GHz, Manufactured by SPEAG

Ingredients	(% by weight)
Water	64~78%
Mineral oil	11~18%
Emulsifiers	9~15%
Additives and Salt	2~3%

<Tissue Dielectric Parameter Check Results>

Frequency (MHz)	Liquid Temp. (°C)	Conductivity (σ)	Permittivity (ϵ_r)	Conductivity Target (σ)	Permittivity Target (ϵ_r)	Delta (σ) (%)	Delta (ϵ_r) (%)	Limit (%)	Date
2450	22.6	1.818	39.954	1.80	39.20	1.00	1.92	±5	2020/10/22
2450	22.3	1.781	39.951	1.80	39.20	-1.06	1.92	±5	2020/10/25
5250	22.3	4.837	37.139	4.71	35.95	2.70	3.31	±5	2020/10/26
5250	22.1	4.757	37.205	4.71	35.95	1.00	3.49	±5	2020/10/27
5250	22.3	4.589	36.900	4.71	35.95	-2.57	2.64	±5	2020/11/3
5250	22.2	4.624	35.887	4.71	35.95	-1.83	-0.18	±5	2020/11/9
5600	22.3	5.217	36.628	5.07	35.50	2.90	3.18	±5	2020/10/26
5600	22.1	5.131	36.661	5.07	35.50	1.20	3.27	±5	2020/10/27
5600	22.3	4.941	36.360	5.07	35.50	-2.54	2.42	±5	2020/11/3
5600	22.2	4.963	35.357	5.07	35.50	-2.11	-0.40	±5	2020/11/9
5750	22.3	5.386	36.445	5.22	35.35	3.18	3.10	±5	2020/10/26
5750	22.1	5.275	36.449	5.22	35.35	1.05	3.11	±5	2020/10/27
5750	22.3	5.092	36.225	5.22	35.35	-2.45	2.48	±5	2020/11/3
5750	22.2	5.136	35.166	5.22	35.35	-1.61	-0.52	±5	2020/11/9

9.3 System Performance Check Results

Comparing to the original SAR value provided by SPEAG, the verification data should be within its specification of 10 %. Below table shows the target SAR and measured SAR after normalized to 1W input power. The table below indicates the system performance check can meet the variation criterion and the plots can be referred to Appendix A of this report.

Date	Frequency (MHz)	Input Power (mW)	Dipole S/N	Probe S/N	DAE S/N	Measured 1g SAR (W/kg)	Targeted 1g SAR (W/kg)	Normalized 1g SAR (W/kg)	Deviation (%)
2020/10/22	2450	250	D2450V2-736	ES3DV3 - SN3169	DAE4 Sn699	13.30	52.70	53.2	0.95
2020/10/25	2450	250	D2450V2-736	ES3DV3 - SN3184	DAE4 Sn916	13.40	52.70	53.6	1.71
2020/10/26	5250	100	D5GHzV2-1128-5250	EX3DV4 - SN3728	DAE4 Sn376	7.72	80.00	77.2	-3.50
2020/10/27	5250	50	D5GHzV2-1006-5250	EX3DV4 - SN7590	DAE3 Sn495	3.68	80.70	73.6	-8.80
2020/11/3	5250	100	D5GHzV2-1006-5250	EX3DV4 - SN3642	DAE3 Sn495	8.34	80.70	83.4	3.35
2020/11/9	5250	100	D5GHzV2-1006-5250	EX3DV4 - SN7306	DAE4 Sn1399	7.53	80.70	75.3	-6.69
2020/10/26	5600	100	D5GHzV2-1128-5600	EX3DV4 - SN3728	DAE4 Sn376	8.07	82.40	80.7	-2.06
2020/10/27	5600	50	D5GHzV2-1006-5600	EX3DV4 - SN7590	DAE3 Sn495	3.87	83.30	77.4	-7.08
2020/11/3	5600	100	D5GHzV2-1006-5600	EX3DV4 - SN3642	DAE3 Sn495	8.75	83.30	87.5	5.04
2020/11/9	5600	100	D5GHzV2-1006-5600	EX3DV4 - SN7306	DAE4 Sn1399	8.76	83.30	87.6	5.16
2020/10/26	5750	100	D5GHzV2-1128-5750	EX3DV4 - SN3728	DAE4 Sn376	7.57	79.10	75.7	-4.30
2020/10/27	5750	50	D5GHzV2-1006-5750	EX3DV4 - SN7590	DAE3 Sn495	3.99	80.40	79.8	-0.75
2020/11/3	5750	100	D5GHzV2-1006-5750	EX3DV4 - SN3642	DAE3 Sn495	8.29	80.40	82.9	3.11
2020/11/9	5750	100	D5GHzV2-1006-5750	EX3DV4 - SN7306	DAE4 Sn1399	7.52	80.40	75.2	-6.47

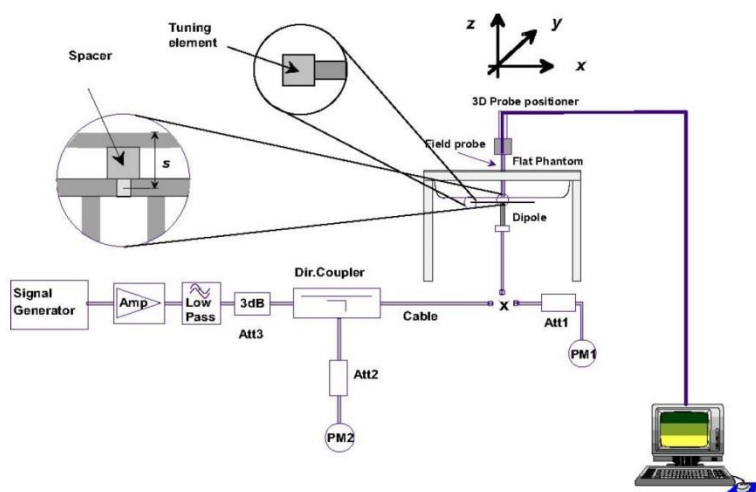


Fig 8.3.1 System Performance Check Setup



Fig 8.3.2 Setup Photo

10. RF Exposure Positions

10.1 SAR Testing for Tablet

This device can be used also in full sized tablet exposure conditions, due to its size. Per FCC KDB 616217, the back surface and edges of the tablet should be tested for SAR compliance with the tablet touching the phantom. The SAR exclusion threshold in KDB 447498 D01v06 can be applied to determine SAR test exclusion for adjacent edge configurations. The closest distance from the antenna to an adjacent tablet edge is used to determine if SAR testing is required for the adjacent edges, with the adjacent edge positioned against the phantom and the edge containing the antenna positioned perpendicular to the phantom.

11. WiFi/Bluetooth Output Power (Unit: dBm)

General Note:

1. For each antenna, transmit power in SISO operation is larger than (or equal to) the power in MIMO operation, RF exposure compliance of MIMO mode can be deduced from the compliance simultaneous transmission of antennas operating in SISO mode.
2. Per KDB 248227 D01v02r02, the simultaneous SAR provisions in KDB publication 447498 should be applied to determine simultaneous transmission SAR test exclusion for WiFi MIMO. If the sum of 1g single transmission chain SAR measurements is $< 1.6\text{W/kg}$ and SAR peak to location ratio ≤ 0.04 , no additional SAR measurements for MIMO.
3. The maximum output power specified for production units are determined for all applicable 802.11 transmission modes in each standalone and aggregated frequency band. Maximum output power is measured for the highest maximum output power configuration(s) in each frequency band according to the default power measurement procedures. For "Not required", SAR Test reduction was applied from KDB 248227 guidance, Sec. 2.1, b), 1) when the same maximum power is specified for multiple transmission modes in a frequency band, the largest channel bandwidth, lowest order modulation, lowest data rate and lowest order 802.11a/g/n/ac mode is used for SAR measurement, on the highest measured output power channel in the initial test configuration, for each frequency band or when MIMO mode was not performed, due to for each antenna, transmit power in SISO operation is larger than (or equal to) the power in MIMO operation, RF exposure compliance of MIMO mode can be deduced from the compliance simultaneous transmission of antennas operating in SISO mode. Additional output power measurements were not necessary.
4. Per KDB 248227 D01v02r02, SAR test reduction is determined according to 802.11 transmission mode configurations and certain exposure conditions with multiple test positions. In the 2.4 GHz band, separate SAR procedures are applied to DSSS and OFDM configurations to simplify DSSS test requirements. For OFDM, in both 2.4 and 5 GHz bands, an initial test configuration must be determined for each standalone and aggregated frequency band, according to the transmission mode configuration with the highest maximum output power specified for production units to perform SAR measurements. If the same highest maximum output power applies to different combinations of channel bandwidths, modulations and data rates, additional procedures are applied to determine which test configurations require SAR measurement. When applicable, an initial test position may be applied to reduce the number of SAR measurements required for next to the ear, UMPC mini-tablet or hotspot mode configurations with multiple test positions.
5. For 2.4 GHz 802.11b DSSS, either the initial test position procedure for multiple exposure test positions or the DSSS procedure for fixed exposure position is applied; these are mutually exclusive. For 2.4 GHz and 5 GHz OFDM configurations, the initial test configuration is applied to measure SAR using either the initial test position procedure for multiple exposure test position configurations or the initial test configuration procedures for fixed exposure test conditions. Based on the reported SAR of the measured configurations and maximum output power of the transmission mode configurations that are not included in the initial test configuration, the subsequent test configuration and initial test position procedures are applied to determine if SAR measurements are required for the remaining OFDM transmission configurations. In general, the number of test channels that require SAR measurement is minimized based on maximum output power measured for the test sample(s).
6. For OFDM transmission configurations in the 2.4 GHz and 5 GHz bands, When the same maximum power is specified for multiple transmission modes in a frequency band, the largest channel bandwidth, lowest order modulation, lowest data rate and lowest order 802.11a/g/n/ac mode is used for SAR measurement, on the highest measured output power channel for each frequency band.
7. DSSS and OFDM configurations are considered separately according to the required SAR procedures. SAR is measured in the initial test position using the 802.11 transmission mode configuration required by the DSSS procedure or initial test configuration and subsequent test configuration(s) according to the OFDM procedures. 18 The initial test position procedure is described in the following:
 - a. When the reported SAR of the initial test position is $\leq 0.4\text{ W/kg}$, further SAR measurement is not required for the other test positions in that exposure configuration and 802.11 transmission mode combinations within the frequency band or aggregated band.
 - b. When the reported SAR of the test position is $> 0.4\text{ W/kg}$, SAR is repeated for the 802.11 transmission mode configuration tested in the initial test position to measure the subsequent next closet/smallest test separation distance and maximum coupling test position on the highest maximum output power channel, until the report SAR is $\leq 0.8\text{ W/kg}$ or all required test position are tested.
 - c. For all positions/configurations, when the reported SAR is $> 0.8\text{ W/kg}$, SAR is measured for these test positions/configurations on the subsequent next highest measured output power channel(s) until the reported SAR is $\leq 1.2\text{ W/kg}$ or all required channels are tested.
8. Per 201904 TCBC workshops, General principles of FCC KDB Publication 248227 D01 can be applied to determine the SAR Initial Test Configurations and test reduction for 802.11ax SAR testing. For the table below the 802.11ax maximum power is SU (non-OFDMA), and the SU maximum power also higher than RU (OFDMA)
9. In applying the test guidance, the IEEE 802.11 mode with the maximum output power (out of all modes) should be considered for testing
10. For modes with the same maximum output power, the guidance from section 5.3.2 a) of FCC KDB Publication 248227 D01 should be applied, with 802.11ax being considered as the highest 802.11 mode for the appropriate frequency bands
11. When SAR testing for 802.11ax is required
 - a. If the maximum output power is highest for OFDMA scenarios, choose the tone size with the maximum number of tones and the highest maximum output power
 - b. Otherwise, consider the fully allocated channel for SAR testing
 - c. When SAR testing is required on RU sizes less than the fully allocated channel, use the RU number closest to the middle of the channel, choosing the higher RU number when two RUs are equidistant to the middle of the channel

(WWAN OFF)

2.4GHz WLAN				Ant 1			Ant 2			Ant 1+2		
	Mode	Channel	Frequency (MHz)	Average power (dBm)	Tune-Up Limit	Duty Cycle %	Average power (dBm)	Tune-Up Limit	Duty Cycle %	Average power (dBm)	Tune-Up Limit	Duty Cycle %
2.4GHz WLAN	802.11b 1Mbps	1	2412	13.90	14.00	99.50	12.40	12.50	99.50			
		6	2437	13.80	14.00		12.40	12.50				
		11	2462	13.80	14.00		12.40	12.50				
	802.11g 6Mbps	1	2412	Not required	14.00	Not required	Not required	12.50	Not required			
		6	2437		14.00			12.50				
		11	2462		14.00			12.50				
	802.11n-HT20 MCS0	1	2412		14.00			12.50		Not required	14.00	Not required
		6	2437		14.00			12.50			14.00	
		11	2462		14.00			12.50			14.00	
	802.11n-HT40 MCS0	3	2422		14.00			12.50			14.00	
		6	2437		14.00			12.50			14.00	
		9	2452		14.00			12.50			14.00	
	802.11ax-HE20 MCS0	1	2412		14.00			12.50			14.00	
		6	2437		14.00			12.50			14.00	
		11	2462		14.00			12.50			14.00	
	802.11ax-HE40 MCS0	3	2422		14.00			12.50			14.00	
		6	2437		14.00			12.50			14.00	
		9	2452		14.00			12.50			14.00	

5GHz WLAN				Ant 1			Ant 2			Ant 1+2		
	Mode	Channel	Frequency (MHz)	Average power (dBm)	Tune-Up Limit	Duty Cycle %	Average power (dBm)	Tune-Up Limit	Duty Cycle %	Average power (dBm)	Tune-Up Limit	Duty Cycle %
5.2GHz WLAN	802.11a 6Mbps	36	5180	Not required	10.50	Not required	Not required	10.00	Not required			
		40	5200		10.50			10.00				
		44	5220		10.50			10.00				
		48	5240		10.50			10.00				
	802.11n-HT20 MCS0	36	5180		10.50			10.00		Not required	10.50	Not required
		40	5200		10.50			10.00			10.50	
		44	5220		10.50			10.00			10.50	
		48	5240		10.50			10.00			10.50	
	802.11n-HT40 MCS0	38	5190		10.50			10.00			10.50	
		46	5230		10.50			10.00			10.50	
	802.11ac-VHT20 MCS0	36	5180		10.50			10.00			10.50	
		40	5200		10.50			10.00			10.50	
		44	5220		10.50			10.00			10.50	
	802.11ac-VHT40 MCS0	38	5190		10.50			10.00			10.50	
		46	5230		10.50			10.00			10.50	
	802.11ac-VHT80 MCS0	42	5210		10.50			10.00			10.50	
	802.11ax-HE20 MCS0	36	5180		10.50			10.00			10.50	
		40	5200		10.50			10.00			10.50	
		44	5220		10.50			10.00			10.50	
		48	5240		10.50			10.00			10.50	
	802.11ax-HE40 MCS0	38	5190		10.50			10.00			10.50	
		46	5230		10.50			10.00			10.50	
	802.11ax-HE80 MCS0	42	5210		10.50			10.00			10.50	

5GHz WLAN				Ant 1			Ant 2			Ant 1+2		
	Mode	Channel	Frequency (MHz)	Average power (dBm)	Tune-Up Limit	Duty Cycle %	Average power (dBm)	Tune-Up Limit	Duty Cycle %	Average power (dBm)	Tune-Up Limit	Duty Cycle %
5.3GHz WLAN	802.11a 6Mbps	52	5260	Not required	10.50	Not required	Not required	10.00	Not required			
		56	5280		10.50			10.00				
		60	5300		10.50			10.00				
		64	5320		10.50			10.00				
	802.11n-HT20 MCS0	52	5260		10.50			10.00		Not required	10.50	Not required
		56	5280		10.50			10.00			10.50	
		60	5300		10.50			10.00			10.50	
		64	5320		10.50			10.00			10.50	
	802.11n-HT40 MCS0	54	5270		10.50			10.00			10.50	
		62	5310		10.50			10.00			10.50	
	802.11ac-VHT20 MCS0	52	5260		10.50			10.00			10.50	
		56	5280		10.50			10.00			10.50	
		60	5300		10.50			10.00			10.50	
		64	5320		10.50			10.00			10.50	
	802.11ac-VHT40 MCS0	54	5270		10.50			10.00			10.50	
		62	5310		10.50			10.00			10.50	
	802.11ac-VHT80 MCS0	58	5290	10.30	10.50	98.90	9.90	10.00	98.90		10.50	
	802.11ac-VHT160 MCS0	50	5250	10.40	10.50	98.90	9.90	10.00	98.90	10.41	10.5	98.90
	802.11ax-HE20 MCS0	52	5260	Not required	10.50	Not required	Not required	10.00	Not required	Not required	10.50	Not required
		56	5280		10.50			10.00			10.50	
		60	5300		10.50			10.00			10.50	
		64	5320		10.50			10.00			10.50	
	802.11ax-HE40 MCS0	54	5270		10.50			10.00			10.50	
		62	5310		10.50			10.00			10.50	
	802.11ax-HE80 MCS0	58	5290		10.50			10.00			10.50	
	802.11ax-HE160 MCS0	50	5250		10.50			10.00			10.5	

5GHz WLAN				Ant 1			Ant 2			Ant 1+2					
	Mode	Channel	Frequency (MHz)	Average power (dBm)	Tune-Up Limit	Duty Cycle %	Average power (dBm)	Tune-Up Limit	Duty Cycle %	Average power (dBm)	Tune-Up Limit	Duty Cycle %			
5.5GHz WLAN	802.11a 6Mbps	100	5500	Not required	10.00	Not required	Not required	9.00	Not required						
		116	5580		10.00			9.00							
		124	5620		10.00			9.00							
		132	5660		10.00			9.00							
		140	5700		10.00			9.00							
		144	5720		10.00			9.00							
	802.11n-HT20 MCS0	100	5500		10.00			9.00		Not required	9.00	Not required	Not required	10.00	Not required
		116	5580		10.00			9.00			10.00				
		124	5620		10.00			9.00			10.00				
		132	5660		10.00			9.00			10.00				
		144	5720		10.00			9.00			10.00				
	802.11n-HT40 MCS0	102	5510		10.00			9.00			10.00				
		110	5550		10.00			9.00			10.00				
		126	5630		10.00			9.00			10.00				
		134	5670		10.00			9.00			10.00				
		142	5710		10.00			9.00			10.00				
	802.11ac-VHT20 MCS0	100	5500		10.00			9.00			10.00				
		116	5580		10.00			9.00			10.00				
		124	5620		10.00			9.00			10.00				
		132	5660		10.00			9.00			10.00				
		144	5720		10.00			9.00			10.00				
	802.11ac-VHT40 MCS0	102	5510		10.00			9.00			10.00				
		110	5550		10.00			9.00			10.00				
		126	5630		10.00		9.00	10.00							
		134	5670		10.00		9.00	10.00							
		142	5710		10.00		9.00	10.00							
	802.11ac-VHT80 MCS0	106	5530	10.00	8.80	9.00	98.90	10.00							
		122	5610	10.00	8.70	9.00		10.00							
		138	5690	10.00	8.90	9.00		10.00							
	802.11ac-VHT160 MCS0	114	5570	9.90	10.00	98.90	8.90	9.00	98.90	9.91	10.00	98.90			
	802.11ax-HE20 MCS0	100	5500	Not required	10.00	Not required	Not required	9.00	Not required	Not required	10.00	Not required			
		116	5580		10.00			9.00			10.00				
		124	5620		10.00			9.00			10.00				
		132	5660		10.00			9.00			10.00				
		144	5720		10.00			9.00			10.00				
	802.11ax-HE40 MCS0	102	5510		10.00			9.00			10.00				
		110	5550		10.00			9.00			10.00				
		126	5630		10.00			9.00			10.00				
		134	5670		10.00			9.00			10.00				
		142	5710		10.00			9.00			10.00				
802.11ax-HE80 MCS0	106	5530	10.00		9.00			10.00							
	122	5610	10.00		9.00			10.00							
	138	5690	10.00		9.00			10.00							
802.11ax-HE160 MCS0	114	5570	10.00		9.00			10.00							

5GHz WLAN				Ant 1			Ant 2			Ant 1+2		
	Mode	Channel	Frequency (MHz)	Average power (dBm)	Tune-Up Limit	Duty Cycle %	Average power (dBm)	Tune-Up Limit	Duty Cycle %	Average power (dBm)	Tune-Up Limit	Duty Cycle %
5.8GHz WLAN	802.11a 6Mbps	149	5745	Not required	10.50	Not required	Not required	8.50	Not required			
		157	5785		10.50			8.50				
		165	5825		10.50			8.50				
	802.11n-HT20 MCS0	149	5745	Not required	10.50	Not required	Not required	8.50	Not required	Not required	10.50	Not required
		157	5785		10.50			8.50			10.50	
		165	5825		10.50			8.50			10.50	
	802.11n-HT40 MCS0	151	5755	10.40	10.50	98.90	8.40	8.50	98.90	Not required	10.50	Not required
		159	5795	10.40	10.50		8.40	8.50			10.50	
	802.11ac-VHT20 MCS0	149	5745	Not required	10.50	Not required	Not required	8.50	Not required	Not required	10.50	Not required
		157	5785		10.50			8.50			10.50	
		165	5825		10.50			8.50			10.50	
	802.11ac-VHT40 MCS0	151	5755	Not required	10.50	Not required	Not required	8.50	Not required	Not required	10.50	Not required
		159	5795		10.50			8.50			10.50	
	802.11ac-VHT80 MCS0	155	5775	10.40	10.50	98.90	8.40	8.50	98.90	9.89	10.50	98.90
	802.11ax-HE20 MCS0	149	5745	Not required	10.50	Not required	Not required	8.50	Not required	Not required	10.50	Not required
		157	5785		10.50			8.50			10.50	
		165	5825		10.50			8.50			10.50	
	802.11ax-HE40 MCS0	151	5755	Not required	10.50	Not required	Not required	8.50	Not required	Not required	10.50	Not required
		159	5795		10.50			8.50			10.50	
	802.11ax-HE80 MCS0	155	5775		10.50			8.50			10.50	



(WWAN ON)

2.4GHz WLAN				Ant 1			Ant 2			Ant 1+2		
	Mode	Channel	Frequency (MHz)	Average power (dBm)	Tune-Up Limit	Duty Cycle %	Average power (dBm)	Tune-Up Limit	Duty Cycle %	Average power (dBm)	Tune-Up Limit	Duty Cycle %
2.4GHz WLAN	802.11b 1Mbps	1	2412	13.90	14.00	99.50	12.40	12.50	99.50			
		6	2437	13.80	14.00		12.40	12.50				
		11	2462	13.80	14.00		12.40	12.50				
	802.11g 6Mbps	1	2412	Not required	14.00	Not required	Not required	12.50	Not required			
		6	2437		14.00			12.50				
		11	2462		14.00			12.50				
	802.11n-HT20 MCS0	1	2412		14.00			12.50		Not required	14.00	Not required
		6	2437		14.00			12.50			14.00	
		11	2462		14.00			12.50			14.00	
	802.11n-HT40 MCS0	3	2422		14.00			12.50			14.00	
		6	2437		14.00			12.50			14.00	
		9	2452		14.00			12.50			14.00	
	802.11ax-HE20 MCS0	1	2412		14.00			12.50			14.00	
		6	2437		14.00			12.50			14.00	
		11	2462		14.00			12.50			14.00	
	802.11ax-HE40 MCS0	3	2422		14.00			12.50			14.00	
		6	2437		14.00			12.50			14.00	
		9	2452		14.00			12.50			14.00	

5GHz WLAN				Ant 1			Ant 2			Ant 1+2		
	Mode	Channel	Frequency (MHz)	Average power (dBm)	Tune-Up Limit	Duty Cycle %	Average power (dBm)	Tune-Up Limit	Duty Cycle %	Average power (dBm)	Tune-Up Limit	Duty Cycle %
5.2GHz WLAN	802.11a 6Mbps	36	5180	Not required	10.50	Not required	Not required	9.00	Not required			
		40	5200		10.50			9.00				
		44	5220		10.50			9.00				
		48	5240		10.50			9.00				
	802.11n-HT20 MCS0	36	5180		10.50			9.00		Not required	10.50	Not required
		40	5200		10.50			9.00			10.50	
		44	5220		10.50			9.00			10.50	
		48	5240		10.50			9.00			10.50	
	802.11n-HT40 MCS0	38	5190		10.50			9.00			10.50	
		46	5230		10.50			9.00			10.50	
	802.11ac-VHT20 MCS0	36	5180		10.50			9.00			10.50	
		40	5200		10.50			9.00			10.50	
		44	5220		10.50			9.00			10.50	
	802.11ac-VHT40 MCS0	38	5190		10.50			9.00			10.50	
		46	5230		10.50			9.00			10.50	
	802.11ac-VHT80 MCS0	42	5210		10.50			9.00			10.50	
	802.11ax-HE20 MCS0	36	5180		10.50			9.00			10.50	
		40	5200		10.50			9.00			10.50	
		44	5220		10.50			9.00			10.50	
		48	5240		10.50			9.00			10.50	
	802.11ax-HE40 MCS0	38	5190		10.50			9.00			10.50	
		46	5230		10.50			9.00			10.50	
	802.11ax-HE80 MCS0	42	5210		10.50			9.00			10.50	

5GHz WLAN				Ant 1			Ant 2			Ant 1+2		
	Mode	Channel	Frequency (MHz)	Average power (dBm)	Tune-Up Limit	Duty Cycle %	Average power (dBm)	Tune-Up Limit	Duty Cycle %	Average power (dBm)	Tune-Up Limit	Duty Cycle %
5.3GHz WLAN	802.11a 6Mbps	52	5260	Not required	10.50	Not required	Not required	9.00	Not required			
		56	5280		10.50			9.00				
		60	5300		10.50			9.00				
		64	5320		10.50			9.00				
	802.11n-HT20 MCS0	52	5260		10.50			9.00		Not required	10.50	Not required
		56	5280		10.50			9.00			10.50	
		60	5300		10.50			9.00			10.50	
		64	5320		10.50			9.00			10.50	
	802.11n-HT40 MCS0	54	5270		10.50			9.00			10.50	
		62	5310		10.50			9.00			10.50	
	802.11ac-VHT20 MCS0	52	5260		10.50			9.00			10.50	
		56	5280		10.50			9.00			10.50	
		60	5300		10.50			9.00			10.50	
		64	5320		10.50			9.00			10.50	
	802.11ac-VHT40 MCS0	54	5270		10.50			9.00			10.50	
		62	5310		10.50			9.00			10.50	
	802.11ac-VHT80 MCS0	58	5290	10.30	10.50	98.90	8.90	9.00	98.90		10.50	
	802.11ac-VHT160 MCS0	50	5250	10.40	10.50	98.90	8.90	9.00	98.90	10.41	10.50	98.90
	802.11ax-HE20 MCS0	52	5260	Not required	10.50	Not required	Not required	9.00	Not required	Not required	10.50	Not required
		56	5280		10.50			9.00			10.50	
		60	5300		10.50			9.00			10.50	
		64	5320		10.50			9.00			10.50	
	802.11ax-HE40 MCS0	54	5270		10.50			9.00			10.50	
		62	5310		10.50			9.00			10.50	
	802.11ax-HE80 MCS0	58	5290		10.50			9.00			10.50	
	802.11ax-HE160 MCS0	50	5250		10.50			9.00			10.50	

5GHz WLAN				Ant 1			Ant 2			Ant 1+2		
	Mode	Channel	Frequency (MHz)	Average power (dBm)	Tune-Up Limit	Duty Cycle %	Average power (dBm)	Tune-Up Limit	Duty Cycle %	Average power (dBm)	Tune-Up Limit	Duty Cycle %
5.5GHz WLAN	802.11a 6Mbps	100	5500		10.00			8.00				
		116	5580		10.00			8.00				
		124	5620		10.00			8.00				
		132	5660		10.00			8.00				
		140	5700		10.00			8.00				
		144	5720		10.00			8.00				
	802.11n-HT20 MCS0	100	5500		10.00			8.00			10.00	
		116	5580		10.00			8.00			10.00	
		124	5620		10.00			8.00			10.00	
		132	5660		10.00			8.00			10.00	
		140	5700		10.00			8.00			10.00	
		144	5720		10.00			8.00			10.00	
	802.11n-HT40 MCS0	102	5510	Not required	10.00	Not required	Not required	8.00	Not required		10.00	
		110	5550		10.00			8.00			10.00	
		126	5630		10.00			8.00			10.00	
		134	5670		10.00			8.00			10.00	
		142	5710		10.00			8.00			10.00	
	802.11ac-VHT20 MCS0	100	5500		10.00			8.00		Not required	10.00	Not required
		116	5580		10.00			8.00			10.00	
		124	5620		10.00			8.00			10.00	
		132	5660		10.00			8.00			10.00	
		140	5700		10.00			8.00			10.00	
		144	5720		10.00			8.00			10.00	
	802.11ac-VHT40 MCS0	102	5510		10.00			8.00			10.00	
		110	5550		10.00			8.00			10.00	
		126	5630		10.00			8.00			10.00	
		134	5670		10.00			8.00			10.00	
		142	5710		10.00			8.00			10.00	
	802.11ac-VHT80 MCS0	106	5530		10.00		7.90	8.00	98.90		10.00	
		122	5610		10.00		7.80	8.00			10.00	
		138	5690		10.00		7.80	8.00			10.00	
	802.11ac-VHT160 MCS0	114	5570	9.90	10.00	98.90	7.90	8.00	98.90	9.91	10.00	98.90
	802.11ax-HE20 MCS0	100	5500		10.00			8.00			10.00	
		116	5580		10.00			8.00			10.00	
		124	5620		10.00			8.00			10.00	
		132	5660		10.00			8.00			10.00	
		140	5700		10.00			8.00			10.00	
		144	5720		10.00			8.00			10.00	
	802.11ax-HE40 MCS0	102	5510	Not required	10.00	Not required	Not required	8.00	Not required	Not required	10.00	Not required
		110	5550		10.00			8.00			10.00	
		126	5630		10.00			8.00			10.00	
		134	5670		10.00			8.00			10.00	
	802.11ax-HE80 MCS0	106	5530		10.00			8.00			10.00	
		122	5610		10.00			8.00			10.00	
		138	5690		10.00			8.00			10.00	
	802.11ax-HE160 MCS0	114	5570		10.00			8.00			10.00	

5GHz WLAN				Ant 1			Ant 2			Ant 1+2		
	Mode	Channel	Frequency (MHz)	Average power (dBm)	Tune-Up Limit	Duty Cycle %	Average power (dBm)	Tune-Up Limit	Duty Cycle %	Average power (dBm)	Tune-Up Limit	Duty Cycle %
5.8GHz WLAN	802.11a 6Mbps	149	5745	Not required	10.50	Not required	Not required	7.50	Not required			
		157	5785		10.50			7.50				
		165	5825		10.50			7.50				
	802.11n-HT20 MCS0	149	5745	Not required	10.50	Not required	Not required	7.50	Not required	Not required	10.50	Not required
		157	5785		10.50			7.50			10.50	
		165	5825		10.50			7.50			10.50	
	802.11n-HT40 MCS0	151	5755	10.40	10.50	98.90	7.10	7.50	98.90	Not required	10.50	Not required
		159	5795	10.40	10.50		7.20	7.50			10.50	
	802.11ac-VHT20 MCS0	149	5745	Not required	10.50	Not required	Not required	7.50	Not required	Not required	10.50	Not required
		157	5785		10.50			7.50			10.50	
		165	5825		10.50			7.50			10.50	
	802.11ac-VHT40 MCS0	151	5755	Not required	10.50	Not required	Not required	7.50	Not required	Not required	10.50	Not required
		159	5795		10.50			7.50			10.50	
	802.11ac-VHT80 MCS0	155	5775	10.40	10.50	98.90	7.30	7.50	98.90	9.89	10.50	98.90
	802.11ax-HE20 MCS0	149	5745	Not required	10.50	Not required	Not required	7.50	Not required	Not required	10.50	Not required
		157	5785		10.50			7.50			10.50	
		165	5825		10.50			7.50			10.50	
	802.11ax-HE40 MCS0	151	5755	Not required	10.50	Not required	Not required	7.50	Not required	Not required	10.50	Not required
		159	5795		10.50			7.50			10.50	
	802.11ax-HE80 MCS0	155	5775		10.50			7.50			10.50	

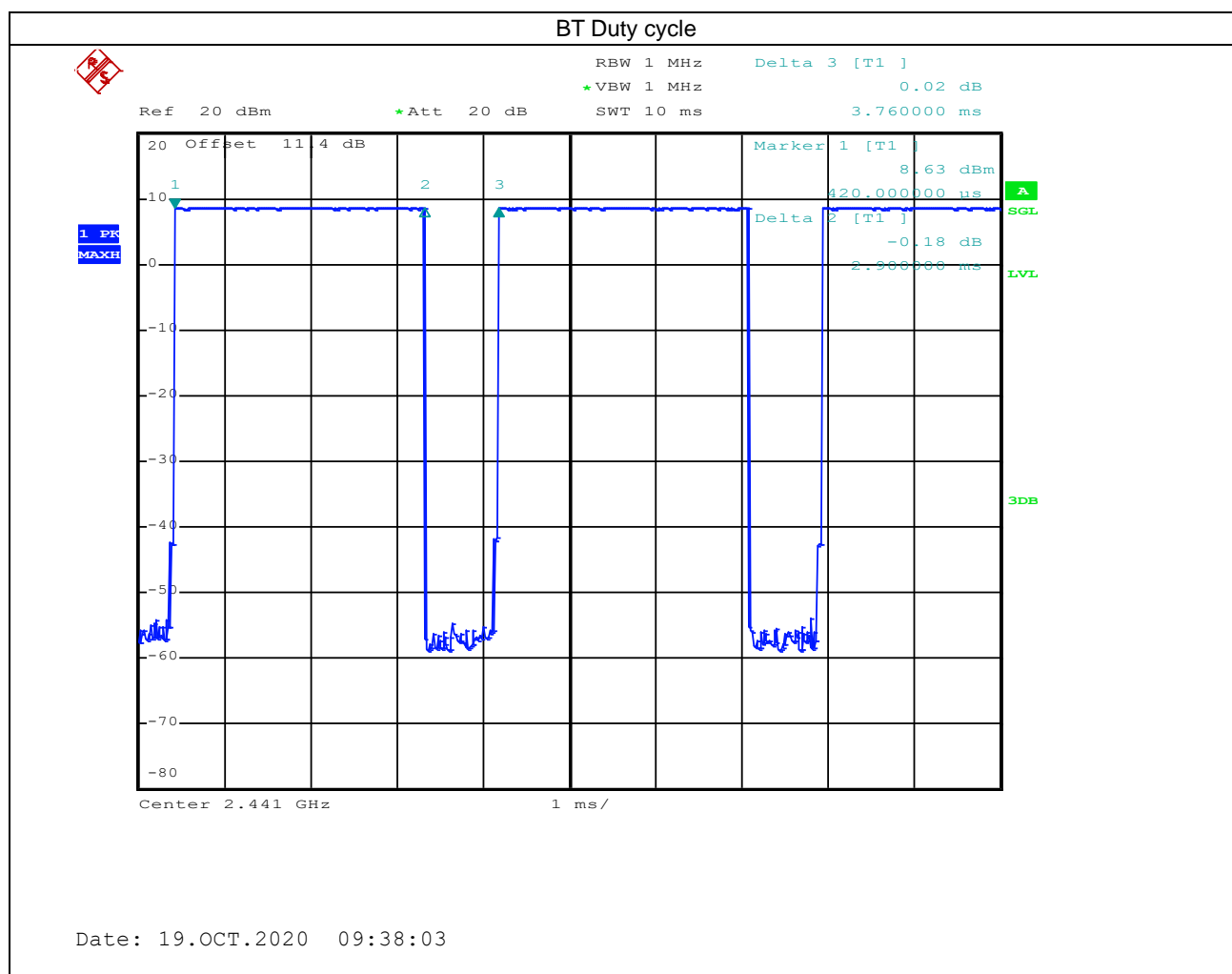
<2.4GHz Bluetooth>

General Note:

- For 2.4GHz Bluetooth SAR testing was selected 1Mbps due to its highest average power and duty cycle is 77.13% considered in SAR testing, and the duty cycle would be scaled to theoretical 83.3% in reported SAR calculation.

Mode	Channel	Frequency (MHz)	Average power (dBm)		
			1Mbps	2Mbps	3Mbps
BR / EDR	CH 00	2402	9.09	7.91	8.00
	CH 39	2441	9.68	8.52	8.59
	CH 78	2480	9.98	8.68	8.75
Tune-up Limit			10.50	10.50	10.50

Mode	Channel	Frequency (MHz)	Average power (dBm)	
			1Mbps	2Mbps
LE	CH 00	2402	Not required	
	CH 19	2440		
	CH 39	2480		
Tune-up Limit			9	9



<SAR test exclusion table>
General Note:

1. The below table, when the distance is < 50 mm exclusion threshold is "Ratio", when the distance is > 50 mm exclusion threshold is "mW"
2. Maximum power is the source-based time-average power and represents the maximum RF output power among production units
3. Per KDB 447498 D01v06, for larger devices, the test separation distance of adjacent edge configuration is determined by the closest separation between the antenna and the user.
4. Per KDB 447498 D01v06, standalone SAR test exclusion threshold is applied; If the test separation distance is < 5mm, 5mm is used to determine SAR exclusion threshold.
5. Per KDB 447498 D01v06, the 1-g and 10-g SAR test exclusion thresholds for 100 MHz to 6 GHz at *test separation distances* ≤ 50 mm are determined by:

$$[(\text{max. power of channel, including tune-up tolerance, mW}) / (\text{min. test separation distance, mm})] \cdot [\sqrt{f(\text{GHz})}] \leq 3.0 \text{ for 1-g SAR and } \leq 7.5 \text{ for 10-g extremity SAR}$$
 - f(GHz) is the RF channel transmit frequency in GHz
 - Power and distance are rounded to the nearest mW and mm before calculation
 - The result is rounded to one decimal place for comparison
6. Per KDB 447498 D01v06, at 100 MHz to 6 GHz and for *test separation distances* > 50 mm, the SAR test exclusion threshold is determined according to the following
 - a) [Threshold at 50 mm in step 1) + (test separation distance - 50 mm) · (f(MHz)/150)] mW, at 100 MHz to 1500 MHz
 - b) [Threshold at 50 mm in step 1) + (test separation distance - 50 mm) · 10] mW at > 1500 MHz and ≤ 6 GHz

Exposure Position	Wireless Interface	BT ANT 1	2.4GHz WLAN ANT 1	2.4GHz WLAN ANT 2	5GHz WLAN ANT 1	5GHz WLAN ANT 2
	Calculated Frequency	2480MHz	2462MHz	2462MHz	5825MHz	5825MHz
	Maximum power (dBm)	10.5	14	12.5	10.5	10
	Maximum rated power(mW)	11.0	25.0	18.0	11.0	10.0
Bottom Face	Separation distance(mm)	5.0	5.0	5.0	5.0	5.0
	exclusion threshold	3.5	7.9	5.7	5.3	4.8
	Testing required?	Yes	Yes	Yes	Yes	Yes
Edge 1	Separation distance(mm)	94.0	94.0	94.9	94.0	94.9
	exclusion threshold	535.0	536.0	545.0	502.0	511.0
	Testing required?	No	No	No	No	No
Edge 2	Separation distance(mm)	5.0	5.0	289.6	5.0	289.6
	exclusion threshold	3.5	7.9	2491.0	5.3	2458.0
	Testing required?	Yes	Yes	No	Yes	No
Edge 3	Separation distance(mm)	108.5	108.5	106.5	108.5	106.5
	exclusion threshold	680.0	681.0	661.0	647.0	627.0
	Testing required?	No	No	No	No	No
Edge 4	Separation distance(mm)	289.6	289.6	5.0	289.6	5.0
	exclusion threshold	2491.0	2492.0	5.7	2458.0	4.8
	Testing required?	No	No	Yes	No	Yes
Bottom of Laptop	Separation distance(mm)	5.0	5.0	5.0	5.0	5.0
	exclusion threshold	3.5	7.9	5.7	5.3	4.8
	Testing required?	Yes	Yes	Yes	Yes	Yes

12. SAR Test Results

General Note:

1. Per KDB 447498 D01v06, the reported SAR is the measured SAR value adjusted for maximum tune-up tolerance.
 - a. Tune-up scaling Factor = tune-up limit power (mW) / EUT RF power (mW), where tune-up limit is the maximum rated power among all production units.
 - b. For SAR testing of WLAN signal with non-100% duty cycle, the measured SAR is scaled-up by the duty cycle scaling factor which is equal to "1/(duty cycle)"
 - c. For WLAN/Bluetooth: Reported SAR(W/kg)= Measured SAR(W/kg)* Duty Cycle scaling factor * Tune-up scaling factor
2. Per KDB 447498 D01v06, for each exposure position, testing of other required channels within the operating mode of a frequency band is not required when the *reported* 1-g or 10-g SAR for the mid-band or highest output power channel is:
 - ≤ 0.8 W/kg or 2.0 W/kg, for 1-g or 10-g respectively, when the transmission band is ≤ 100 MHz
 - ≤ 0.6 W/kg or 1.5 W/kg, for 1-g or 10-g respectively, when the transmission band is between 100 MHz and 200 MHz
 - ≤ 0.4 W/kg or 1.0 W/kg, for 1-g or 10-g respectively, when the transmission band is ≥ 200 MHz
3. Per KDB 865664 D01v01r04, for each frequency band, repeated SAR measurement is required only when the measured SAR is ≥ 0.8 W/kg.
4. The 5GHz WLAN SISO Ant 2 import power reduction for SAR compliance when the WWAN operation is active, the detail power reduction mechanism include operational description.

WLAN Note:

1. Per KDB 248227 D01v02r02, for 2.4GHz 802.11g/n SAR testing is not required when the highest reported SAR for DSSS is adjusted by the ratio of OFDM to DSSS specified maximum output power and the adjusted SAR is ≤ 1.2 W/kg.
2. Per KDB 248227 D01v02r02, U-NII-1 SAR testing is not required when the U-NII-2A band highest reported SAR for a test configuration is ≤ 1.2 W/kg, SAR is not required for U-NII-1 band.
3. When the reported SAR of the test position is > 0.4 W/kg, SAR is repeated for the 802.11 transmission mode configuration tested in the initial test position to measure the subsequent next closet/smallest test separation distance and maximum coupling test position on the highest maximum output power channel, until the report SAR is ≤ 0.8 W/kg or all required test position are tested.
4. For all positions / configurations, when the reported SAR is > 0.8 W/kg, SAR is measured for these test positions / configurations on the subsequent next highest measured output power channel(s) until the reported SAR is ≤ 1.2 W/kg or all required channels are tested.
5. For 2.4GHz WLAN SAR testing was performed on single antenna RF power in SISO mode is larger or equal to the single antenna RF power in MIMO mode, and for RF exposure assessment of MIMO mode simultaneous transmission exclusion analysis was performed with SAR test results of each antenna in SISO mode.
6. Per KDB 248227 D01v02r02, the simultaneous SAR provisions in KDB publication 447498 should be applied to determine simultaneous transmission SAR test exclusion for WiFi MIMO. If the sum of 1g single transmission chain SAR measurements is < 1.6 W/kg and SAR peak to location ratio ≤ 0.04 , no additional SAR measurements for MIMO.
7. During SAR testing the WLAN transmission was verified using a spectrum analyzer.

**12.1 Body SAR****<WLAN SAR>**

Plot No.	Band	Mode	Test Position	Gap (mm)	Antenna	WWAN	Ch.	Freq. (MHz)	Average Power (dBm)	Tune-Up Limit (dBm)	Tune-up Scaling Factor	Duty Cycle %	Duty Cycle Scaling Factor	Power Drift (dB)	Measured 1g SAR (W/kg)	Reported 1g SAR (W/kg)
01	WLAN2.4GHz	802.11b 1Mbps	Bottom of Laptop	0mm	Ant 1	On/Off	1	2412	13.90	14.00	1.023	99.50	1.005	-0.08	0.767	0.789
	WLAN2.4GHz	802.11b 1Mbps	Bottom Face	0mm	Ant 1	On/Off	1	2412	13.90	14.00	1.023	99.50	1.005	-0.11	0.933	0.960
	WLAN2.4GHz	802.11b 1Mbps	Bottom Face	0mm	Ant 1	On/Off	6	2437	13.80	14.00	1.047	99.50	1.005	-0.07	0.948	0.998
	WLAN2.4GHz	802.11b 1Mbps	Bottom Face	0mm	Ant 1	On/Off	11	2462	13.80	14.00	1.047	99.50	1.005	-0.03	1.130	1.189
	WLAN2.4GHz	802.11b 1Mbps	Edge 2	0mm	Ant 1	On/Off	1	2412	13.90	14.00	1.023	99.50	1.005	0.02	0.233	0.240
	WLAN2.4GHz	802.11b 1Mbps	Bottom of Laptop	0mm	Ant 2	On/Off	11	2462	12.40	12.50	1.023	99.50	1.005	-0.01	0.641	0.659
	WLAN2.4GHz	802.11b 1Mbps	Bottom Face	0mm	Ant 2	On/Off	11	2462	12.40	12.50	1.023	99.50	1.005	0.03	0.896	0.921
	WLAN2.4GHz	802.11b 1Mbps	Bottom Face	0mm	Ant 2	On/Off	1	2412	12.40	12.50	1.023	99.50	1.005	0.12	0.783	0.805
	WLAN2.4GHz	802.11b 1Mbps	Bottom Face	0mm	Ant 2	On/Off	6	2437	12.40	12.50	1.023	99.50	1.005	0.03	0.843	0.867
	WLAN2.4GHz	802.11b 1Mbps	Edge 4	0mm	Ant 2	On/Off	11	2462	12.40	12.50	1.023	99.50	1.005	0.04	0.280	0.288
02	WLAN5GHz	802.11ac-VHT160 MCS0	Bottom of Laptop	0mm	Ant 1	On/Off	50	5250	10.40	10.50	1.023	98.90	1.011	-0.18	0.557	0.576
	WLAN5GHz	802.11ac-VHT160 MCS0	Bottom Face	0mm	Ant 1	On/Off	50	5250	10.40	10.50	1.023	98.90	1.011	0.05	0.799	0.827
	WLAN5GHz	802.11ac-VHT80 MCS0	Bottom Face	0mm	Ant 1	On/Off	58	5290	10.30	10.50	1.047	98.90	1.011	0.06	0.805	0.852
	WLAN5GHz	802.11ac-VHT160 MCS0	Edge 2	0mm	Ant 1	On/Off	50	5250	10.40	10.50	1.023	98.90	1.011	-0.16	1.070	1.107
	WLAN5GHz	802.11ac-VHT80 MCS0	Edge 2	0mm	Ant 1	On/Off	58	5290	10.30	10.50	1.047	98.90	1.011	-0.02	1.010	1.069
	WLAN5GHz	802.11ac-VHT160 MCS0	Bottom of Laptop	0mm	Ant 2	Off	50	5250	9.90	10.00	1.023	98.90	1.011	0.1	0.300	0.310
	WLAN5GHz	802.11ac-VHT160 MCS0	Bottom Face	0mm	Ant 2	Off	50	5250	9.90	10.00	1.023	98.90	1.011	0.09	1.020	1.055
	WLAN5GHz	802.11ac-VHT80 MCS0	Bottom Face	0mm	Ant 2	Off	58	5290	9.90	10.00	1.023	98.90	1.011	0.05	1.030	1.066
	WLAN5GHz	802.11ac-VHT160 MCS0	Edge 4	0mm	Ant 2	Off	50	5250	9.90	10.00	1.023	98.90	1.011	-0.11	0.700	0.724
	WLAN5GHz	802.11ac-VHT160 MCS0	Bottom of Laptop	0mm	Ant 2	On	50	5250	8.90	9.00	1.023	98.90	1.011	0.02	0.230	0.238
03	WLAN5GHz	802.11ac-VHT160 MCS0	Bottom Face	0mm	Ant 2	On	50	5250	8.90	9.00	1.023	98.90	1.011	0.01	0.783	0.810
	WLAN5GHz	802.11ac-VHT80 MCS0	Bottom Face	0mm	Ant 2	On	58	5290	8.90	9.00	1.023	98.90	1.011	0.13	0.791	0.818
	WLAN5GHz	802.11ac-VHT160 MCS0	Edge 4	0mm	Ant 2	On	50	5250	8.90	9.00	1.023	98.90	1.011	-0.01	0.537	0.556
	WLAN5GHz	802.11ac-VHT160 MCS0	Bottom of Laptop	0mm	Ant 1+2	On/Off	50	5250	10.41	10.50	1.021	98.90	1.011	0.01	0.113	0.117
	WLAN5GHz	802.11ac-VHT160 MCS0	Bottom Face	0mm	Ant 1+2	On/Off	50	5250	10.41	10.50	1.021	98.90	1.011	0.18	0.625	0.645
	WLAN5GHz	802.11ac-VHT160 MCS0	Edge 2	0mm	Ant 1+2	On/Off	50	5250	10.41	10.50	1.021	98.90	1.011	0.02	0.555	0.573
	WLAN5GHz	802.11ac-VHT160 MCS0	Edge 4	0mm	Ant 1+2	On/Off	50	5250	10.41	10.50	1.021	98.90	1.011	-0.15	0.359	0.371
	WLAN5GHz	802.11ac-VHT160 MCS0	Bottom of Laptop	0mm	Ant 1	On/Off	114	5570	9.90	10.00	1.023	98.90	1.011	0.1	0.574	0.594
	WLAN5GHz	802.11ac-VHT160 MCS0	Bottom Face	0mm	Ant 1	On/Off	114	5570	9.90	10.00	1.023	98.90	1.011	-0.01	0.705	0.729
	WLAN5GHz	802.11ac-VHT160 MCS0	Edge 2	0mm	Ant 1	On/Off	114	5570	9.90	10.00	1.023	98.90	1.011	-0.07	0.750	0.776
03	WLAN5GHz	802.11ac-VHT160 MCS0	Bottom of Laptop	0mm	Ant 2	Off	114	5570	8.90	9.00	1.023	98.90	1.011	0.09	0.255	0.264
	WLAN5GHz	802.11ac-VHT160 MCS0	Bottom Face	0mm	Ant 2	Off	114	5570	8.90	9.00	1.023	98.90	1.011	0.01	0.965	0.998
	WLAN5GHz	802.11ac-VHT80 MCS0	Bottom Face	0mm	Ant 2	Off	138	5690	8.90	9.00	1.023	98.90	1.011	0.02	0.790	0.817
	WLAN5GHz	802.11ac-VHT160 MCS0	Edge 4	0mm	Ant 2	Off	114	5570	8.90	9.00	1.023	98.90	1.011	-0.1	0.588	0.608
	WLAN5GHz	802.11ac-VHT160 MCS0	Bottom of Laptop	0mm	Ant 2	On	114	5570	7.90	8.00	1.023	98.90	1.011	-0.1	0.209	0.216
	WLAN5GHz	802.11ac-VHT160 MCS0	Bottom Face	0mm	Ant 2	On	114	5570	7.90	8.00	1.023	98.90	1.011	-0.15	0.792	0.819
	WLAN5GHz	802.11ac-VHT80 MCS0	Bottom Face	0mm	Ant 2	On	106	5530	7.90	8.00	1.023	98.90	1.011	0.06	0.765	0.791
	WLAN5GHz	802.11ac-VHT160 MCS0	Edge 4	0mm	Ant 2	On	114	5570	7.90	8.00	1.023	98.90	1.011	0.03	0.548	0.567
	WLAN5GHz	802.11ac-VHT160 MCS0	Bottom of Laptop	0mm	Ant 1+2	On/Off	114	5570	9.91	10.00	1.021	98.90	1.011	0.17	0.244	0.252
	WLAN5GHz	802.11ac-VHT160 MCS0	Bottom Face	0mm	Ant 1+2	On/Off	114	5570	9.91	10.00	1.021	98.90	1.011	0.11	0.543	0.560
03	WLAN5GHz	802.11ac-VHT160 MCS0	Edge 2	0mm	Ant 1+2	On/Off	114	5570	9.91	10.00	1.021	98.90	1.011	-0.07	0.516	0.533
	WLAN5GHz	802.11ac-VHT160 MCS0	Edge 4	0mm	Ant 1+2	On/Off	114	5570	9.91	10.00	1.021	98.90	1.011	-0.06	0.285	0.294

Plot No.	Band	Mode	Test Position	Gap (mm)	Antenna	WWAN	Ch.	Freq. (MHz)	Average Power (dBm)	Tune-Up Limit (dBm)	Tune-up Scaling Factor	Duty Cycle %	Duty Cycle Scaling Factor	Power Drift (dB)	Measured 1g SAR (W/kg)	Reported 1g SAR (W/kg)
	WLAN5GHz	802.11ac-VHT80 MCS0	Bottom of Laptop	0mm	Ant 1	On/Off	155	5775	10.40	10.50	1.023	98.90	1.011	-0.09	0.397	0.411
	WLAN5GHz	802.11ac-VHT80 MCS0	Bottom Face	0mm	Ant 1	On/Off	155	5775	10.40	10.50	1.023	98.90	1.011	-0.1	0.906	0.937
04	WLAN5GHz	802.11n-HT40 MCS0	Bottom Face	0mm	Ant 1	On/Off	159	5795	10.40	10.50	1.023	98.90	1.011	0.11	0.986	1.020
	WLAN5GHz	802.11ac-VHT80 MCS0	Edge 2	0mm	Ant 1	On/Off	155	5775	10.40	10.50	1.023	98.90	1.011	-0.06	0.564	0.583
	WLAN5GHz	802.11ac-VHT80 MCS0	Bottom of Laptop	0mm	Ant 2	Off	155	5775	8.40	8.50	1.023	98.90	1.011	0.07	0.216	0.223
	WLAN5GHz	802.11ac-VHT80 MCS0	Bottom Face	0mm	Ant 2	Off	155	5775	8.40	8.50	1.023	98.90	1.011	0.08	0.935	0.967
	WLAN5GHz	802.11n-HT40 MCS0	Bottom Face	0mm	Ant 2	Off	159	5795	8.40	8.50	1.023	98.90	1.011	-0.14	0.855	0.885
	WLAN5GHz	802.11ac-VHT80 MCS0	Edge 4	0mm	Ant 2	Off	155	5775	8.40	8.50	1.023	98.90	1.011	-0.17	0.464	0.480
	WLAN5GHz	802.11ac-VHT80 MCS0	Bottom of Laptop	0mm	Ant 2	On	155	5775	7.30	7.50	1.047	98.90	1.011	0.05	0.176	0.186
	WLAN5GHz	802.11ac-VHT80 MCS0	Bottom Face	0mm	Ant 2	On	155	5775	7.30	7.50	1.047	98.90	1.011	-0.12	0.762	0.807
	WLAN5GHz	802.11n-HT40 MCS0	Bottom Face	0mm	Ant 2	On	159	5795	7.20	7.50	1.072	98.90	1.011	-0.06	0.696	0.754
	WLAN5GHz	802.11ac-VHT80 MCS0	Edge 4	0mm	Ant 2	On	155	5775	7.30	7.50	1.047	98.90	1.011	0.04	0.378	0.400
	WLAN5GHz	802.11ac-VHT80 MCS0	Bottom of Laptop	0mm	Ant 1+2	On/Off	155	5775	9.89	10.50	1.151	98.90	1.011	0.11	0.309	0.360
	WLAN5GHz	802.11ac-VHT80 MCS0	Bottom Face	0mm	Ant 1+2	On/Off	155	5775	9.89	10.50	1.151	98.90	1.011	0.1	0.662	0.770
	WLAN5GHz	802.11ac-VHT80 MCS0	Edge 2	0mm	Ant 1+2	On/Off	155	5775	9.89	10.50	1.151	98.90	1.011	0.05	0.431	0.501
	WLAN5GHz	802.11ac-VHT80 MCS0	Edge 4	0mm	Ant 1+2	On/Off	155	5775	9.89	10.50	1.151	98.90	1.011	0.16	0.407	0.474

<Bluetooth SAR>

Plot No.	Band	Mode	Test Position	Gap (mm)	Antenna	WWAN	Ch.	Freq. (MHz)	Average Power (dBm)	Tune-Up Limit (dBm)	Tune-up Scaling Factor	Duty Cycle %	Duty Cycle Scaling Factor	Power Drift (dB)	Measured 1g SAR (W/kg)	Reported 1g SAR (W/kg)
	Bluetooth	1Mbps	Bottom of Laptop	0mm	Ant 1	On/Off	78	2480	9.98	10.50	1.127	77.13	1.080	-0.14	0.300	0.365
	Bluetooth	1Mbps	Bottom Face	0mm	Ant 1	On/Off	78	2480	9.98	10.50	1.127	77.13	1.080	0.16	0.386	0.470
	Bluetooth	1Mbps	Bottom Face	0mm	Ant 1	On/Off	0	2402	9.09	10.50	1.384	77.13	1.080	0.1	0.283	0.423
05	Bluetooth	1Mbps	Bottom Face	0mm	Ant 1	On/Off	39	2441	9.68	10.50	1.208	77.13	1.080	0.18	0.379	0.494
	Bluetooth	1Mbps	Edge 2	0mm	Ant 1	On/Off	78	2480	9.98	10.50	1.127	77.13	1.080	-0.05	0.128	0.156

12.2 Repeated SAR Measurement

No.	Band	Mode	Test Position	Gap (mm)	Antenna	Ch.	Freq. (MHz)	Average Power (dBm)	Tune-Up Limit (dBm)	Tune-up Scaling Factor	Duty Cycle %	Duty Cycle Scaling Factor	Power Drift (dB)	Measured 1g SAR (W/kg)	Ratio	Reported 1g SAR (W/kg)
1st	WLAN2.4GHz	802.11b 1Mbps	Bottom Face	0mm	Ant 1	11	2462	13.80	14.00	1.047	99.50	1.005	-0.03	1.130		1.189
2nd	WLAN2.4GHz	802.11b 1Mbps	Bottom Face	0mm	Ant 1	11	2462	13.80	14.00	1.047	99.50	1.005	-0.01	1.110	1.02	1.168
1st	WLAN5GHz	802.11ac-VHT160 MCS0	Edge 2	0mm	Ant 1	50	5250	10.40	10.50	1.023	98.90	1.011	-0.16	1.070		1.107
2nd	WLAN5GHz	802.11ac-VHT160 MCS0	Edge 2	0mm	Ant 1	50	5250	10.40	10.50	1.023	98.90	1.011	-0.06	1.010	1.06	1.045
1st	WLAN5GHz	802.11ac-VHT160 MCS0	Bottom Face	0mm	Ant 2	114	5570	8.90	9.00	1.023	98.90	1.011	0.01	0.965		0.998
2nd	WLAN5GHz	802.11ac-VHT160 MCS0	Bottom Face	0mm	Ant 2	114	5570	8.90	9.00	1.023	98.90	1.011	0	0.933	1.03	0.965
1st	WLAN5GHz	802.11n-HT40 MCS0	Bottom Face	0mm	Ant 1	159	5795	10.40	10.50	1.023	98.90	1.011	0.11	0.986		1.020
2nd	WLAN5GHz	802.11n-HT40 MCS0	Bottom Face	0mm	Ant 1	159	5795	10.40	10.50	1.023	98.90	1.011	0.03	0.961	1.03	0.994

General Note:

- Per KDB 865664 D01v01r04, for each frequency band, repeated SAR measurement is required only when the measured SAR is $\geq 0.8\text{W/kg}$.
- Per KDB 865664 D01v01r04, if the ratio among the repeated measurement is ≤ 1.2 and the measured SAR $< 1.45\text{W/kg}$, only one repeated measurement is required.
- The ratio is the difference in percentage between original and repeated *measured SAR*.
- All measurement SAR result is scaled-up to account for tune-up tolerance and is compliant.

13. Simultaneous Transmission Analysis

NO.	Simultaneous Transmission Configurations	Body
1.	2.4GHz WLAN ANT 1 + 2.4GHz WLAN ANT 2	Yes
2.	2.4GHz WLAN ANT 2 + Bluetooth ANT 1	Yes
3.	5GHz WLAN ANT 2 + Bluetooth ANT 1	Yes
4.	5GHz WLAN ANT 1+2 + Bluetooth ANT 1	Yes

General Note:

- For 2.4GHz SAR testing was performed on single antenna RF power in SISO mode is larger or equal to the single antenna RF power in MIMO mode, and for RF exposure assessment of MIMO mode simultaneous transmission exclusion analysis was performed with SAR test results of each antenna in SISO mode.
- EUT will choose either WLAN 2.4GHz or WLAN 5GHz according to the network signal condition; therefore, 2.4GHz WLAN and 5GHz WLAN will not operate simultaneously at any moment.
- The Scaled SAR summation is calculated based on the same configuration and test position.
- Per KDB 447498 D01v06, simultaneous transmission SAR is compliant if,
 - Scalar SAR summation < 1.6W/kg.
 - $SPLSR = (SAR1 + SAR2)^{1.5} / (\min. \text{ separation distance, mm})$, and the peak separation distance is determined from the square root of $[(x1-x2)^2 + (y1-y2)^2 + (z1-z2)^2]$, where (x1, y1, z1) and (x2, y2, z2) are the coordinates of the extrapolated peak SAR locations in the zoom scan.
 - If $SPLSR \leq 0.04$, simultaneously transmission SAR measurement is not necessary.
 - Simultaneously transmission SAR measurement, and the reported multi-band SAR < 1.6W/kg.
 - The SPLSR calculated results please refer to section 14.2.

13.1 Body Exposure Conditions

(WWAN OFF)

Exposure Position	1	2	3	4	5	6	1+2 Summed 1g SAR (W/kg)	2+5 Summed 1g SAR (W/kg)	4+5 Summed 1g SAR (W/kg)	5+6 Summed 1g SAR (W/kg)	Case No	SPLSR
	2.4GHz WLAN Ant 1 1g SAR (W/kg)	2.4GHz WLAN Ant 2 1g SAR (W/kg)	5GHz WLAN Ant 1 1g SAR (W/kg)	5GHz WLAN Ant 2 1g SAR (W/kg)	Bluetooth Ant 1 1g SAR (W/kg)	5GHz WLAN Ant 1+2 1g SAR (W/kg)						
Bottom Face at 0mm	1.189	0.921	1.020	1.066	0.494	0.770	2.110	1.415	1.560	1.264	Case 1	0.01
Edge 2 at 0mm	0.240		1.107		0.156	0.573	0.240	0.156	0.156	0.729		
Edge 4 at 0mm		0.288		0.724		0.474	0.288	0.288	0.724	0.474		
Bottom of Laptop at 0mm	0.789	0.659	0.594	0.310	0.365	0.360	1.448	1.024	0.675	0.725		

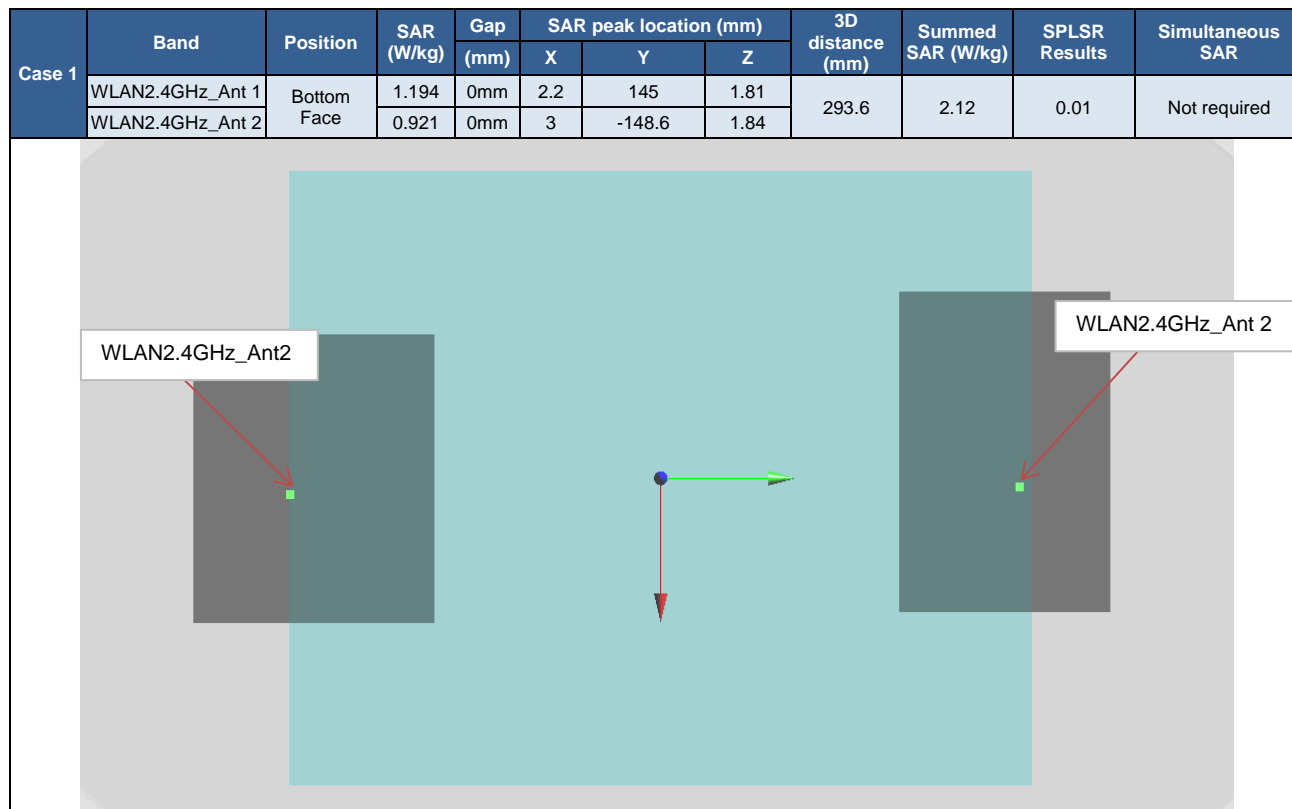
(WWAN ON)

Exposure Position	1	2	3	4	5	6	1+2 Summed 1g SAR (W/kg)	2+5 Summed 1g SAR (W/kg)	4+5 Summed 1g SAR (W/kg)	5+6 Summed 1g SAR (W/kg)	Case No	SPLSR
	2.4GHz WLAN Ant 1 1g SAR (W/kg)	2.4GHz WLAN Ant 2 1g SAR (W/kg)	5GHz WLAN Ant 1 1g SAR (W/kg)	5GHz WLAN Ant 2 1g SAR (W/kg)	Bluetooth Ant 1 1g SAR (W/kg)	5GHz WLAN Ant 1+2 1g SAR (W/kg)						
Bottom Face at 0mm	1.189	0.921	1.020	0.819	0.494	0.770	2.110	1.415	1.313	1.264	Case 1	0.01
Edge 2 at 0mm	0.240		1.107		0.156	0.573	0.240	0.156	0.156	0.729		
Edge 4 at 0mm		0.288		0.567		0.474	0.288	0.288	0.567	0.474		
Bottom of Laptop at 0mm	0.789	0.659	0.594	0.238	0.365	0.360	1.448	1.024	0.603	0.725		

13.2 SPLSR Evaluation and Analysis

General Note:

1. $SPLSR = (SAR_1 + SAR_2)^{1.5} / (\text{min. separation distance, mm})$. If $SPLSR \leq 0.04$, simultaneously transmission SAR measurement is not necessary
2. The detail hotspot point for each transmitter in each exposure condition are showing as below figure and the minimum 3D distance for each sum combination is used for SPLSR analysis.



Test Engineer : Ginger Chiang, Charles Shen, Jack Yang and Bob Cheng

14. Uncertainty Assessment

Per KDB 865664 D01 SAR measurement 100MHz to 6GHz, when the highest measured 1-g SAR within a frequency band is < 1.5 W/kg and the measured 10-g SAR within a frequency band is < 3.75 W/kg. The expanded SAR measurement uncertainty must be $\leq 30\%$, for a confidence interval of $k = 2$. If these conditions are met, extensive SAR measurement uncertainty analysis described in IEEE Std 1528-2013 is not required in SAR reports submitted for equipment approval. For this device, the highest measured 1-g SAR is less 1.5W/kg. Therefore, the measurement uncertainty table is not required in this report.

Declaration of Conformity:

The test results with all measurement uncertainty excluded is presented in accordance with the regulation limits or requirements declared by manufacturers.

Comments and Explanations:

The declared of product specification for EUT presented in the report are provided by the manufacturer, and the manufacturer takes all the responsibilities for the accuracy of product specification.

15. References

- [1] FCC 47 CFR Part 2 "Frequency Allocations and Radio Treaty Matters; General Rules and Regulations"
- [2] ANSI/IEEE Std. C95.1-1992, "IEEE Standard for Safety Levels with Respect to Human Exposure to Radio Frequency Electromagnetic Fields, 3 kHz to 300 GHz", September 1992
- [3] IEEE Std. 1528-2013, "IEEE Recommended Practice for Determining the Peak Spatial-Average Specific Absorption Rate (SAR) in the Human Head from Wireless Communications Devices: Measurement Techniques", Sep 2013
- [4] SPEAG DASY System Handbook
- [5] FCC KDB 248227 D01 v02r02, "SAR Guidance for IEEE 802.11 (WiFi) Transmitters", Oct 2015.
- [6] FCC KDB 447498 D01 v06, "Mobile and Portable Device RF Exposure Procedures and Equipment Authorization Policies", Oct 2015
- [7] FCC KDB 616217 D04 v01r02, "SAR Evaluation Considerations for Laptop, Notebook, Netbook and Tablet Computers", Oct 2015
- [8] FCC KDB 865664 D01 v01r04, "SAR Measurement Requirements for 100 MHz to 6 GHz", Aug 2015.
- [9] FCC KDB 865664 D02 v01r02, "RF Exposure Compliance Reporting and Documentation Considerations" Oct 2015.