

**PHILIPS**

Wireless Speaker

TAS4807

# User manual



Register your product and get support at  
[www.philips.com/support](http://www.philips.com/support)

# Contents

---

<b>1</b>	<b>Important</b>	<b>2</b>
	Safety	2

---

<b>2</b>	<b>Your wireless speaker</b>	<b>3</b>
	Introduction	3
	What's in the box	3
	Overview of the clock radio	3

---

<b>3</b>	<b>Get started</b>	<b>4</b>
	Charge the built-in battery	4
	Turn on/off	4

---

<b>4</b>	<b>Play from Bluetooth devices</b>	<b>5</b>
	Play from Bluetooth devices	5
	Control playback	5
	Control phone call	5

---

<b>5</b>	<b>Product information</b>	<b>6</b>
----------	----------------------------	----------

---

<b>6</b>	<b>Troubleshooting</b>	<b>7</b>
	General	7
	Bluetooth	7

---

<b>7</b>	<b>Notice</b>	<b>8</b>
	Compliance	8
	Care of the environment	8
	FCC Statement	8
	Trademark notice	9

# 1 Important

## Safety

### Important safety instructions

- Make sure that the power supply voltage corresponds to the voltage on the back or the underside of the unit.
- The speaker shall not be exposed to dripping or splashing.
- Do not place any source of danger on the speaker (e.g. liquid filled objects, lit candles).
- Make sure that there is enough free space around the speaker for ventilation.
- Please use the speaker safely in an environment with temperature between 0° and 45°.
- Only use attachments and accessories specified by the manufacturer.

### Battery safety precautions

- Danger of explosion if a battery is incorrectly replaced. Replace only with the same or equivalent type.
- A battery (battery pack or battery installed) shall not be exposed to excessive heat such as sunshine, fire or the like.
- A battery in extreme high or low temperatures during use, storage or transportation, and low air pressure at high altitude can pose safety hazards.
- Do not replace a battery with an incorrect type that can defeat a safeguard (for example, some lithium battery types).

- Disposing a battery into fire or a hot oven, mechanically crushing or cutting a battery can result in an explosion.
- Leaving a battery in an extremely high temperature surrounding, or an extremely low air pressure environment may result in gas.



### Warning

- Never remove the casing of this speaker.
- Never lubricate any part of this speaker.
- Place this speaker on a flat, hard and stable surface.
- Never place this speaker on other electrical equipment.
- Only use this speaker indoors. Keep this speaker away from water, moisture and liquid-filled objects.
- Keep this speaker away from direct sunlight, naked flames or heat.
- Risk of explosion if a battery is replaced by an incorrect type.

## 2 Your wireless speaker

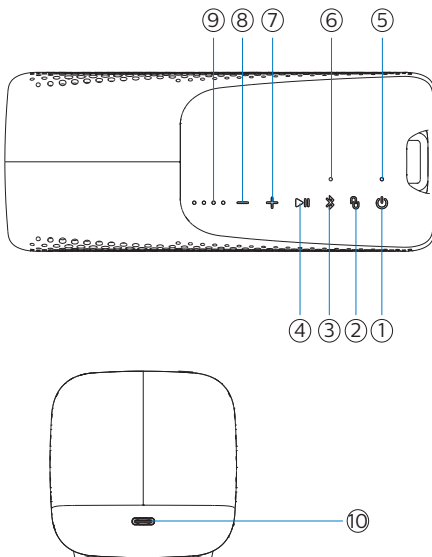
Congratulations on your purchase, and welcome to Philips! To fully benefit from the support that [philips.com/welcome](https://philips.com/welcome).

### What's in the box

Check and identify the contents of your package:

- Speaker
- USB cable
- Quick start guide
- Safety sheet
- Worldwide warranty
- Lanyard

### Overview of the speaker



- ① Turn the speaker on or off.
- ② Press and hold to enter Stereo pairing mode.
- ③ Enter Bluetooth pairing mode.
  - Clear Bluetooth pairing information.
- ④ In Bluetooth mode, press to pause or resume play.
  - Respond to an incoming call through Bluetooth connection.
- ⑤ LED indicator
  - Power /Bluetooth light.
- ⑥ Microphone
- ⑦ Increase volume.
- ⑧ Decrease volume.
- ⑨ Battery level indicators
  - Show the charging progress.
  - Show the battery level.
- ⑩ DC IN
  - Charge the built-in battery.

# 3 Get started

Always follow the instructions in this chapter in sequence.

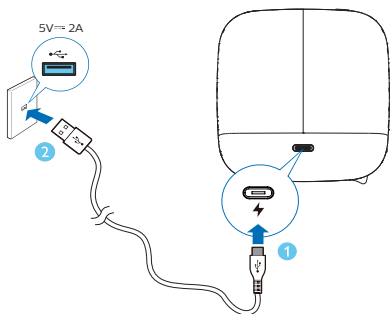
## Charge the built-in battery

The speaker is powered by a built-in rechargeable battery.

### Note

- Fully charge the built-in battery before using.
- When the speaker is turned on and the battery is low, the battery level LED indicator blinks Red slowly.

Connect the USB-C socket on the speaker to an outlet (5V = 2A) by using the provided USB cable.



### Power on

- ↳ When the speaker is being charged, LED blinks red slowly.
- ↳ When the speaker is fully charged, LED is solid White.


### Power off

- ↳ When the speaker is being charged, LED blinks red slowly.
- ↳ When the speaker is fully charged, LED off.


### ! Caution

- Risk of speaker damage! Make sure the power supply voltage corresponds to the voltage printed on the back or the underside of the speaker.
- Risk of electric shock! When unplug the USB cable, always pull the plug from the socket. Never pull the cable.
- Use only a USB cable specified by the manufacturer or sold with this speaker.

## Turn on/off

Press  to turn the speaker on.

- ↳ You will hear the prompt sound.

To turn the speaker off, press  again.

- ↳ You will hear the prompt sound.

### Note

- The speaker will turn off automatically after 15 minutes without audio sign from Bluetooth.



# 4 Play from Bluetooth devices

## Play from Bluetooth devices

With this speaker, you can enjoy audio from your Bluetooth device.



### Note

- Make sure that the Bluetooth function is enabled on your device.
- The maximum distance for pairing the speaker and your Bluetooth device is 20 meters (66 feet).
- Keep away from any other electronic device that may cause interference.

- 1 Press  to turn the speaker on. It will enter Bluetooth pairing mode automatically. You can also press and hold  for 3 seconds to enter Bluetooth pairing mode.
- 2 Enable Bluetooth and select "Philips S4807" in the Bluetooth list on your device for pairing.
  - ↳ If a message prompts for permission for Bluetooth connection, confirm it.
  - ↳ If a password is required, enter 0000 and then confirm.
- 3 Play audio on your Bluetooth device to start streaming music.

LED indicator	Description
Blinking blue quickly	Ready for pairing
Blinking blue slowly	Reconnecting the last connected device
Solid blue	Connected

### Note

- To disconnect a device, press and hold  for 3 seconds until the LED indicator blinks blue quickly.
- To clear the pairing information, press and hold  for 8 seconds until the LED indicator slowly blinking cyan for 3 times.

## Control playback

During playing the music,



Press to pause or resume play

Press twice to play the next track



Adjust the volume

## Control phone call

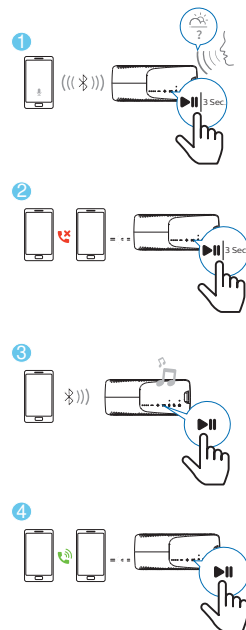


Press to answer or end a call

Press and hold to reject a call



Adjust the volume





## Pairing for stereo mode


Two identical wireless speakers (Philips S4807) can pair with each other for stereo sound.


### Note

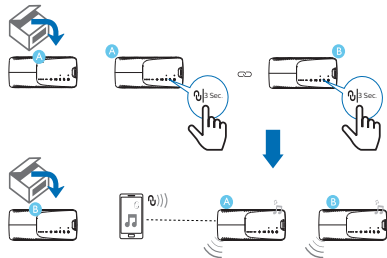
- Any speaker can be used as the primary speaker.
- The speaker connected to a Bluetooth device can only be used as the primary speaker.
- Before stereo pairing, make sure that the secondary speaker is under Bluetooth pairing mode.
- Keep a maximum distance of 20 meters (66 feet) between the speaker and your Bluetooth device.
- In stereo mode, the button operation on the secondary speaker is as same as that of the primary speaker.

**1** Press  to power on both speakers, they will enter Bluetooth pairing mode automatically. The speaker connected to your Bluetooth device will be used as the primary speaker.

**2** On the primary speaker, press and hold  to enter stereo pairing mode until the LED indicator blinks blue and green alternately.

**3** Press  on either speaker. The music will be played through both speakers.

To exit the stereo mode, press and hold the  on either speaker.



# 5 Product information

### Note

- Product information is subject to change without prior notice.

## General information

USB port	5V = 2A
Built-in Lithium battery	3.7V, 4400mAh
Dimensions (W x H x D)	70 x 70 x 169 mm
Weight (main unit)	492 g
Operation Ambient	0 °C~45 °C
IP protection class	IP67

## Amplifier

Output power	10 W
Frequency response	80 Hz - 20KHz
Signal to noise ratio	> 75dB

## Speakers

Impedance	4 Ω
Maximum input power	10W
Size	44 x 80 mm

## Bluetooth

Bluetooth version	5.2
Frequency range	2402 - 2480 MHz
Maximum transmission power	6dBm
Compatible Bluetooth profiles	HFP V1.7
Bluetooth range	up to 20m

# 6 Troubleshooting



## Warning

- Never remove the casing of the speaker.

To keep the warranty valid, never try to repair the speaker yourself.

If you encounter problems when using this speaker, check the following points before requesting service. If the problem remains unsolved, go to the Philips website ([www.philips.com/welcome](http://www.philips.com/welcome)). When you contact Philips, ensure that the speaker is nearby and the model number and serial number are available.

## General

### No power

- Make sure the speaker is fully charged.
- Make sure the USB socket of the speaker is properly connected.
- As a power-saving feature, the speaker turns off automatically 15 minutes after no audio signal is received.

### No sound

- Adjust the volume on this speaker.
- Adjust the volume on the connected device.
- Make sure that your Bluetooth device is within the operational range.

### No response from the speaker


- Restart the speaker.

## Bluetooth

### The audio quality is poor after connection with a Bluetooth-enabled device

- The Bluetooth reception is poor. Move the device closer to this speaker or remove any obstacle between them.

### Fail to find [Philips S4807] on your Bluetooth device for pairing

- Press and hold  for 3 seconds to enter Bluetooth pairing mode, and then try again.

### Cannot connect with your Bluetooth device

- The Bluetooth function of your device is not enabled. Refer to the user manual of your device to find out how to enable the function.
- This speaker is not in pairing mode.
- This speaker is already connected to another Bluetooth-enabled device. Disconnect and try again.



# 7 Notice

Any changes or modifications made to this device that are not expressly approved by **MMD Hong Kong Holding Limited** may void the user's authority to operate the equipment.

## Compliance



Hereby, **TP Vision Europe B.V.** declares that this product is in compliance with the essential requirements and other relevant provisions of Directive 2014/53/EU. You can find the Declaration of Conformity on [www.philips.com/support](http://www.philips.com/support).

## Care of the environment

### Disposal of your old product and battery



Your product is designed and manufactured with high quality materials and components, which can be recycled and reused.



This symbol on a product means that the product is covered by European Directive 2012/19/EU.

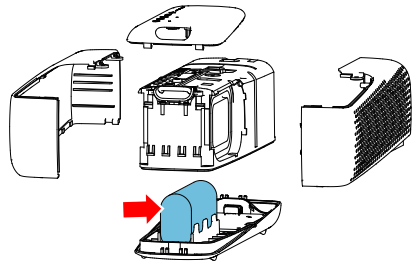


This symbol means that the product contains batteries covered by European Directive 2013/56/EU which cannot be disposed of with normal household waste. Inform yourself about the local separate collection system for electrical

and electronic products and batteries. Follow local rules and never dispose of the product and batteries with normal household waste. Correct disposal of old products and batteries helps prevent negative consequences for the environment and human health.

### Removing the disposable batteries

To remove the disposable batteries, see battery install section.



For INSPIRATION only

### Environmental information

All unnecessary packaging has been omitted. We have tried to make the packaging easy to separate into three materials: cardboard (box), polystyrene foam (buffer) and polyethylene (bags, protective foam sheet.)

Your system consists of materials which can be recycled and reused if disassembled by a specialized company. Please observe the local regulations regarding the disposal of packaging materials, exhausted batteries and old equipment.

Disposal of a battery into fire or a hot oven, or mechanically crushing or cutting of a battery, that can result in an explosion.

---

## FCC Statement

The device complies with the FCC rules, Part 15. Operation is subject to the following two conditions:

- ① This device may not cause harmful interference, and
  - ② This device must accept any interference received, including interference that may cause undesired operation
- CANICES-3(B)/NMB-3(B)

**Warning:** Changes or modifications not expressly approved by the party responsible for compliance could void the user's authority to operate the equipment.

**Note:** This equipment has been tested and found to comply with the limits for a Class B digital device, pursuant to Part 15 of the FCC Rules.

These limits are designed to provide reasonable protection against harmful interference in a residential installation. This equipment generates, uses and can radiate radio frequency energy and, if not installed and used in accordance with the instructions, may cause harmful interference to radio communications.

However, there is no guarantee that interference will not occur in a particular installation. If this equipment does cause harmful interference to radio or television reception, which can be determined by turning the equipment off and on, the user is encouraged to try to correct the interference by one or more of the following measures:

- (1) Reorient or relocate the receiving antenna.
- (2) Increase the separation between the equipment and receiver.
- (3) Connect the equipment into an outlet on a circuit different from that to which the receiver is connected.
- (4) Consult the dealer or an experienced radio/TV technician for help.

## RF Warning Statement

The device has been evaluated to meet general RF exposure requirements. The device can be used in portable exposure conditions without restriction.

### IC:

Le présent appareil est conforme aux CNR d'Industrie Canada applicables aux appareils radio exempts de licence. L'exploitation est autorisée aux deux conditions suivantes:

- 1. l'appareil ne doit pas produire de brouillage, et
- 2. l'utilisateur de l'appareil doit accepter tout brouillage radioélectrique subi, même si le brouillage est susceptible d'en compromettre le fonctionnement.

This device contains licence-exempt transmitter(s)/receiver(s) that comply with Innovation, Science and Economic Development Canada's licence-exempt RSS(s). Operation is subject to the following two conditions:

- 1. This device may not cause interference.
- 2. This device must accept any interference, including interference that may cause undesired operation of the device.

L'émetteur/récepteur exempt de licence contenu dans le présent appareil est conforme aux CNR d'Innovation, Sciences et Développement économique Canada applicables aux appareils radio exempts de licence. L'exploitation est autorisée aux deux conditions suivantes:

- 1. L'appareil ne doit pas produire de brouillage;
- 2. L'appareil doit accepter tout brouillage radioélectrique subi, même si le brouillage est susceptible d'en compromettre le fonctionnement.

---

## Trademark notice



The Bluetooth<sup>®</sup> word mark and logos are registered trademarks owned by the Bluetooth SIG, Inc. and any use of such marks by **MMD Hong Kong Holding Limited** is under license.

Other trademarks and trade names are those of their respective owners.



Specifications are subject to change without notice.  
Philips and the Philips Shield Emblem are registered trademarks of Koninklijke Philips N.V. and are used under license.  
This product has been manufactured by and is sold under the responsibility of MMD Hong Kong Holding Limited or one of its affiliates, and MMD Hong Kong Holding Limited is the warrantor in relation to this product.

TAS4807\_00\_UM\_V1.0

