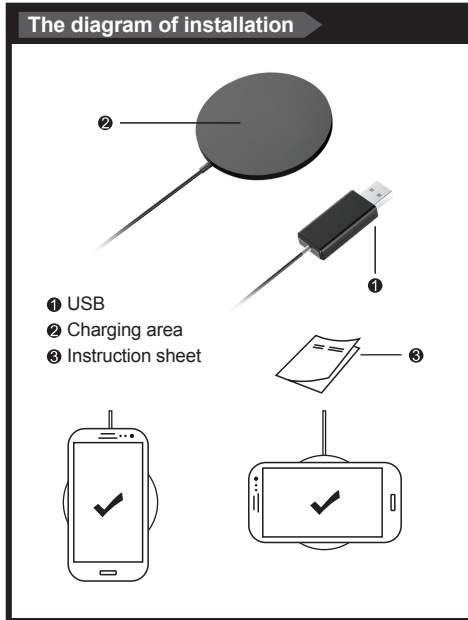


Size: 7x10 cm

Wireless Charger Instruction Sheet

The diagram of installation



Charging Method

1. Using the included USB cable connect the wireless charging pad to a nearby power source.
This pad will enter standby mode and a RED indicator light will be visible.
2. Place the item you want to charge in the centre of the charging pad.
The item will start charging, and the indicator light will turn BLUE.
3. Once the item is fully charged the indicator light will turn RED once again.

Product specs:

Product model:
Main functions: wireless charging transmitter;
Standard version: WPC - 1.1;
Charging type: one-on-one charge corresponding area;
Input Specs: DC: 5V/1.5A;
Output Specs: 5V, 1.0A;
Effective Distance: 4 to 6 MM;
Conversion efficiency: $\geq 70\%$;
Charging methods: induction model;
Working frequency: 110.5-205 KHZ;
Accessories: USB cable; Wireless charging pad;
Packing box, and instruction sheet.

FCC COMPLIANCE STATEMENT:

This device complies with part 15 of the FCC Rules.

Operation is subject to the following two conditions:

- (1) This device may not cause harmful interference, and
- (2) this device must accept any interference received, including interference that may cause undesired operation.

Note: This equipment has been tested and found to comply with the limits for a Class B digital device, pursuant to Part 15 of the FCC Rules. These limits are designed to provide reasonable protection against harmful interference in a residential installation. This equipment generates, uses and can radiate radio frequency energy and, if not installed and used in accordance with the instructions, may cause harmful interference to radio communications.

However, there is no guarantee that interference will not occur in a particular installation. If this equipment does cause harmful interference to radio or television reception, which can be determined by turning the equipment off and on, the user is encouraged to try to correct the interference by one or more of the following measures:

Reorient or relocate the receiving antenna.

Increase the separation between the equipment and receiver.

Connect the equipment into an outlet on a circuit different from that to which the receiver is connected.

Consult the dealer or an experienced radio/TV technician for help.

Warning: Changes or modifications to this unit not expressly approved by the party responsible for compliance could void the user's authority to operate the equipment.

FCC Radiation Exposure Statement

The device has been evaluated to meet general RF exposure requirement.

The device can be used in mobile(min20cm) exposure condition.