

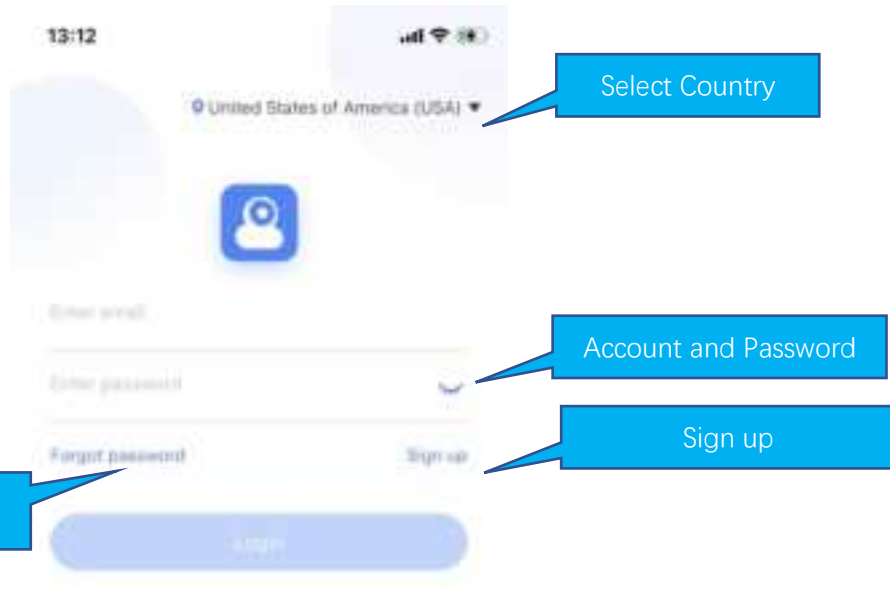


Smart camera Instruction



Scan QR code and download Yi IoT app

Sign up and log in



13:12

United States of America (USA) ▼

Select Country

Account and Password

Forgot Password

Sign up

Log in

This image shows a mobile app sign-up screen. At the top, there's a status bar with the time 13:12 and signal indicators. Below that is a location selector showing 'United States of America (USA)' with a dropdown arrow. A blue icon with a person and a plus sign is visible. There are two input fields: 'Enter email' and 'Enter password'. The password field has an eye icon to toggle visibility. Below the email field is a 'Forgot password' link. To the right of the password field is a 'Sign up' button. At the bottom is a large blue 'Log in' button. Callout boxes point to the location selector, the password field, the 'Forgot password' link, and the 'Sign up' button.



Other login methods

Facebook

Apple

This image shows a mobile app login screen. At the top, there's a status bar with the time 13:12 and signal indicators. Below that is a section titled 'Other login methods' with two icons: Facebook and Apple. Below these icons is a large blue 'Log in' button. A callout box points to the 'Other login methods' section.

How to add camera

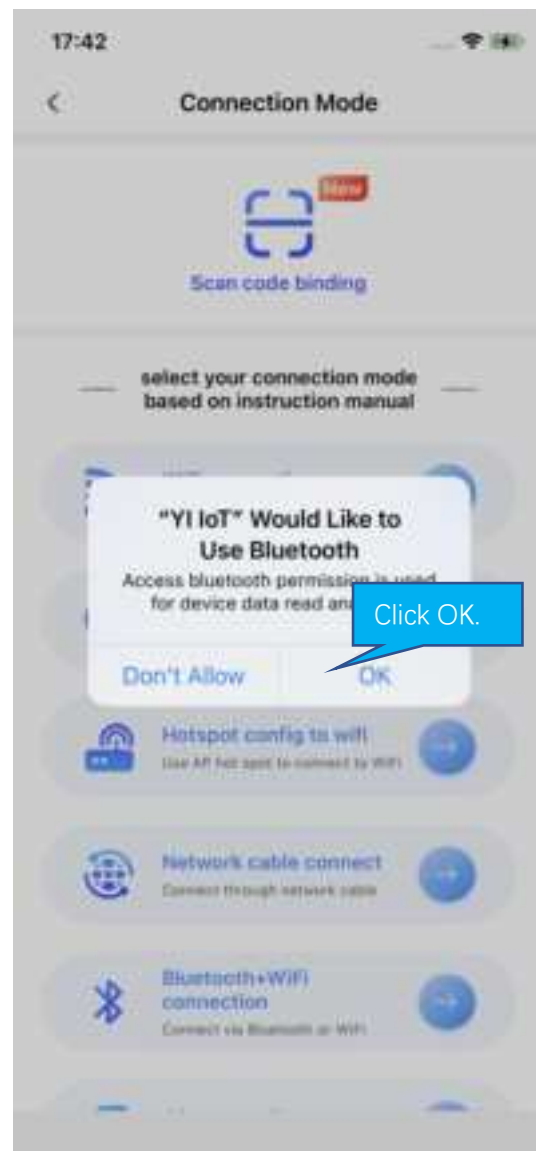
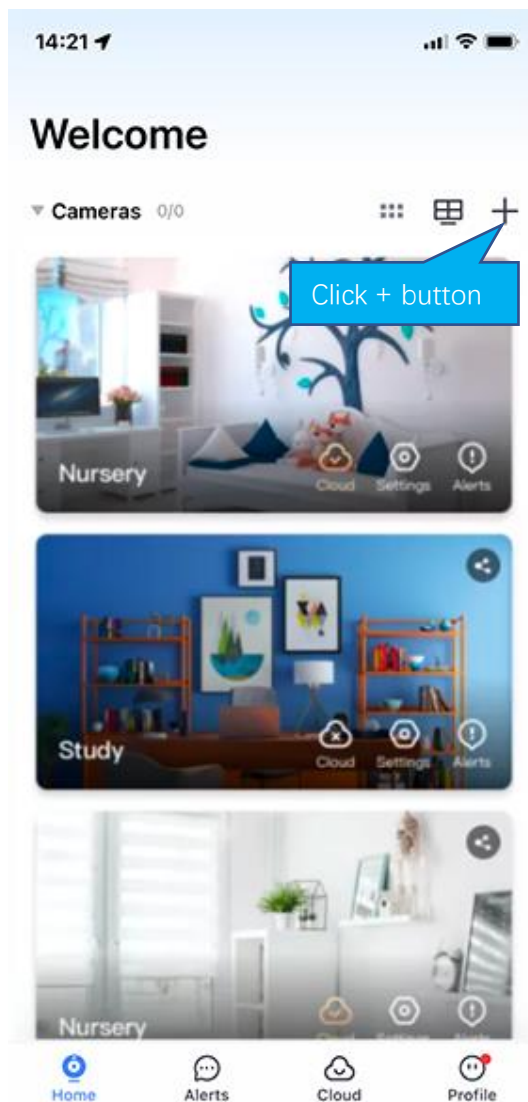
Method 1: Quick camera pairing

(Note: This section only applies to cameras with Bluetooth binding. The product purchase page or product packaging will indicate whether the device supports Bluetooth binding.)

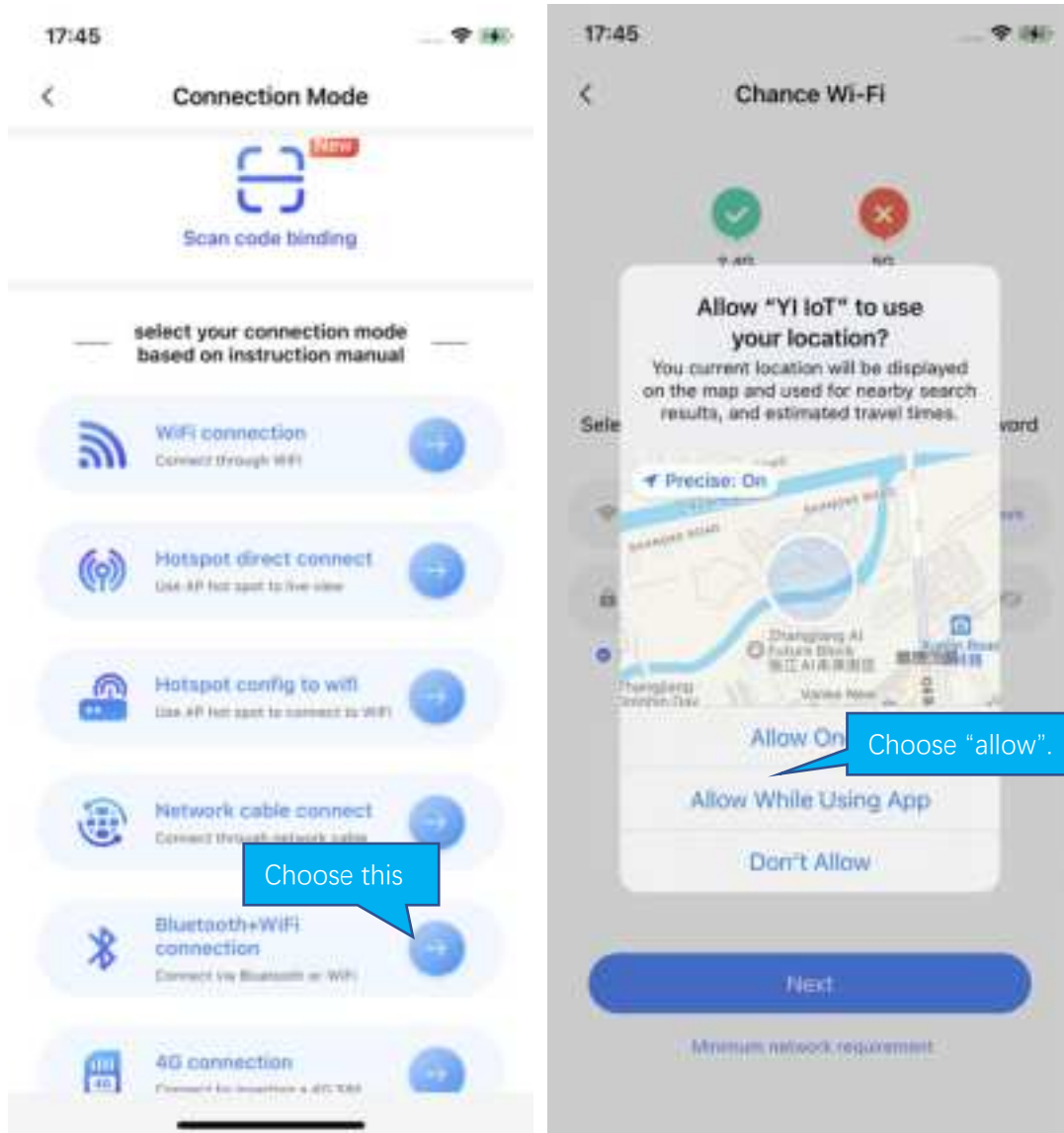
Step 1: Plug your camera into the power supply and power it on. After 20 seconds, you will hear the beep sound from the device and enter the app to bind it.

Step 2: Click the "+" button in the upper right corner of the home page to add a camera.

Step 3: Enter the binding option page, if there is a pop-up window "Yi IoT would like to use Bluetooth", click "OK" to enter the automatic scanning process.



If the above pop-up window does not appear, please enable the Bluetooth function of the mobile phone first, and then select the "Bluetooth+WiFi" option in the list.



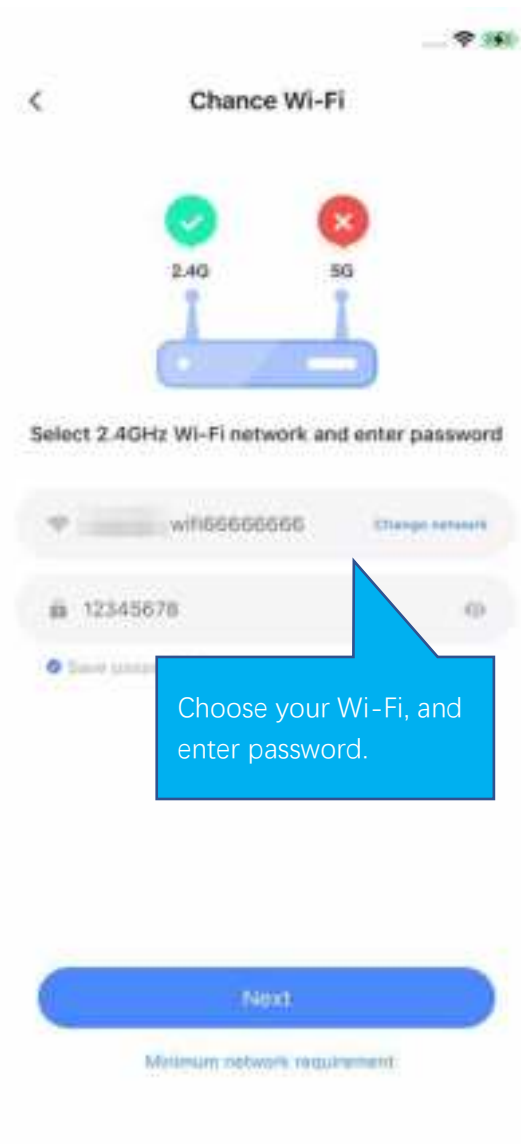
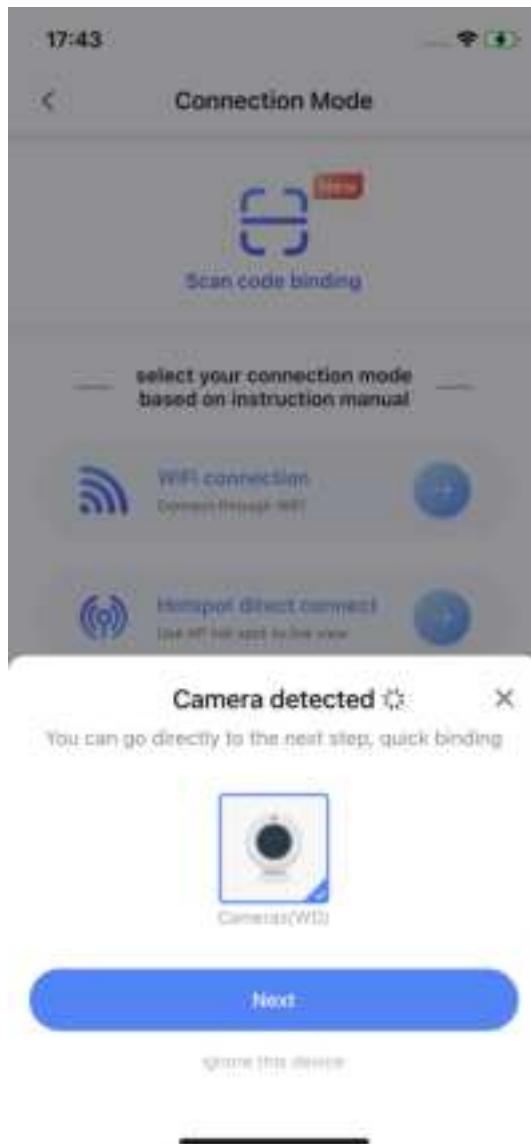
(Note: The app also needs permission to use the phone's location function. In camera binding, the app will check the location of the camera.)

Step 4: The app will automatically identify nearby Bluetooth cameras that can be paired. Select the cameras you want to bind and click Next.

(Note: The camera needs to be powered on and beep continuously to be scanned.)

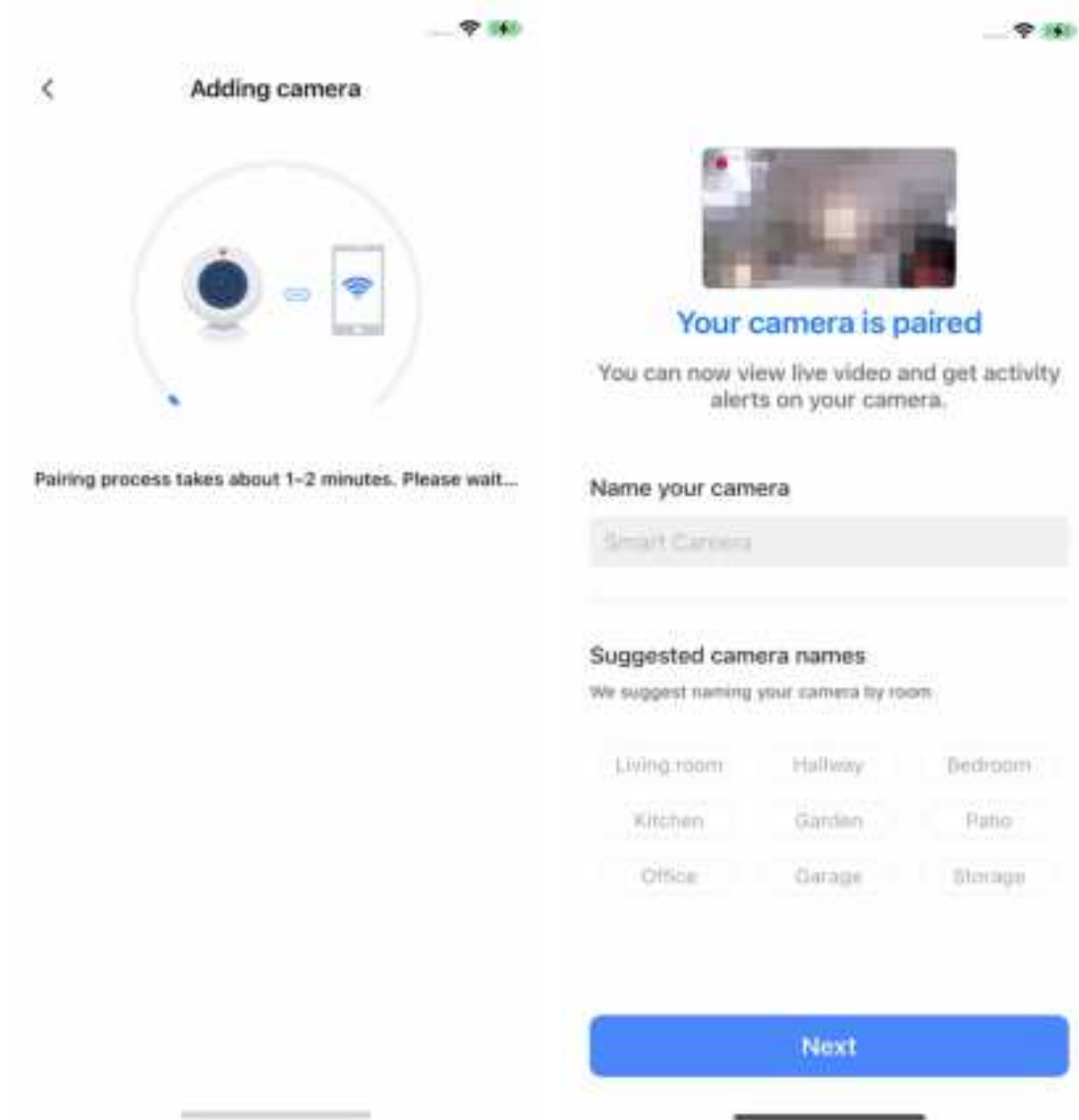
Step 5: Please select Wi-Fi and enter the password.

(Note: It is recommended to use 2.4GHz Wi-Fi first. Some devices do not support 5GHz Wi-Fi.)



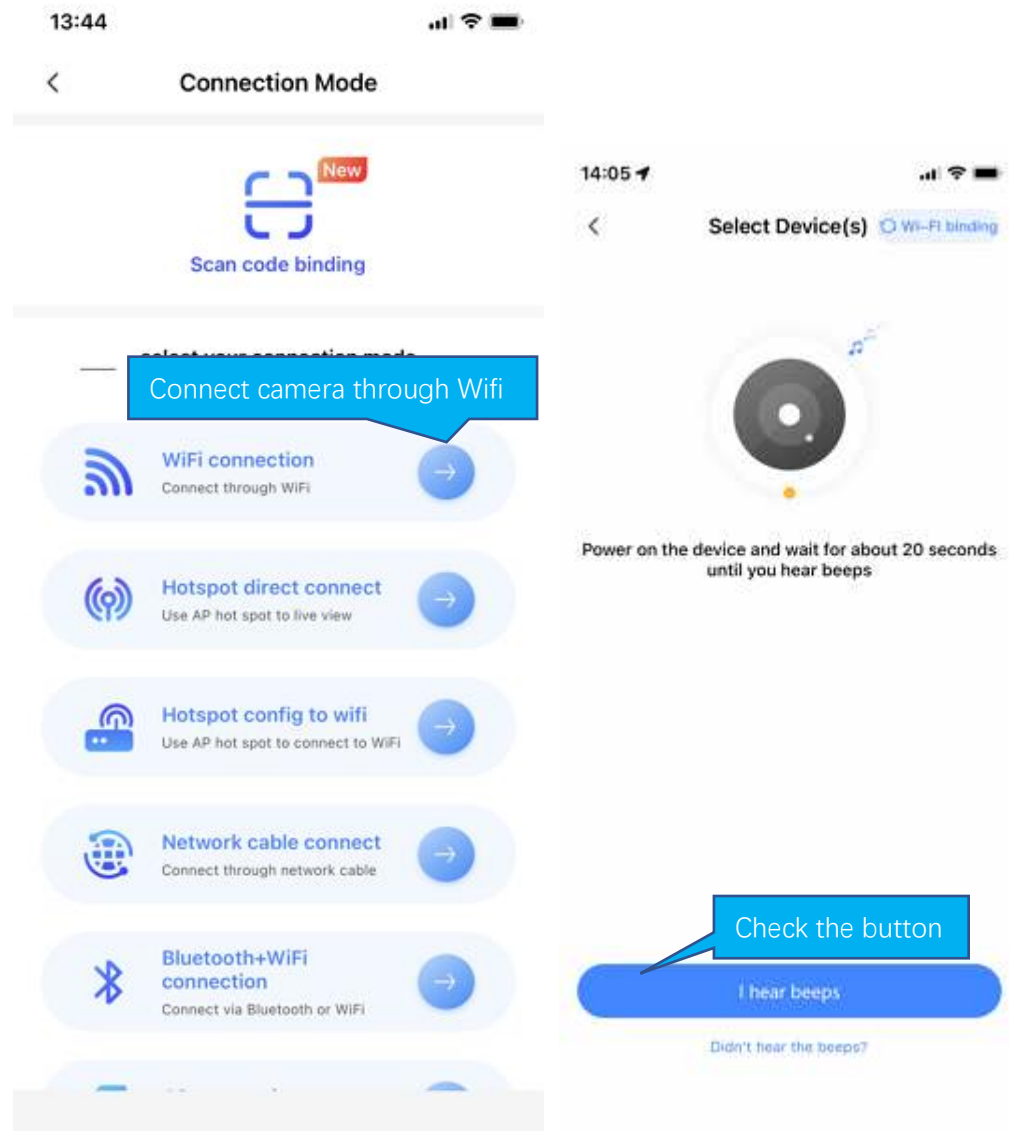
Step 6: During device binding, wait for the voice prompt "binding successful", and you can start using it.

Step 7: Set the name of the device. And then the camera pairing process is completed.



Method 2: Connect cameras with WI-FI

When the camera is powered on, the camera will beep continuously, waiting for the connection from the app. Then operate on the app as shown below.



If you don't hear the beeps, please press the "RESET" on the camera. Continue for more than 5 seconds, until you heard the beeps, that means the reset is successful.

14:07

< Change Wi-Fi

Select a Wi-Fi network and enter a password

mm Change network

Please enter password

☒ Save password

This may be a 5GHz Wi-Fi, please refer to the manual to confirm whether the device supports 5GHz Wi-Fi (most devices do not support it), if not, please choose 2.4GHz Wi-Fi

Next

Minimum network requirement

connected to wifi in mobile phone setting, fill wifi password

Note:

1. Some models only support 2.4G or 5G WiFi. Please refer to the product hardware information.
2. Please turn on location of phone

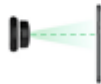
14:14



< QR code faces camera directly



try sonic binding >



☐ I heard "Waiting to connect"

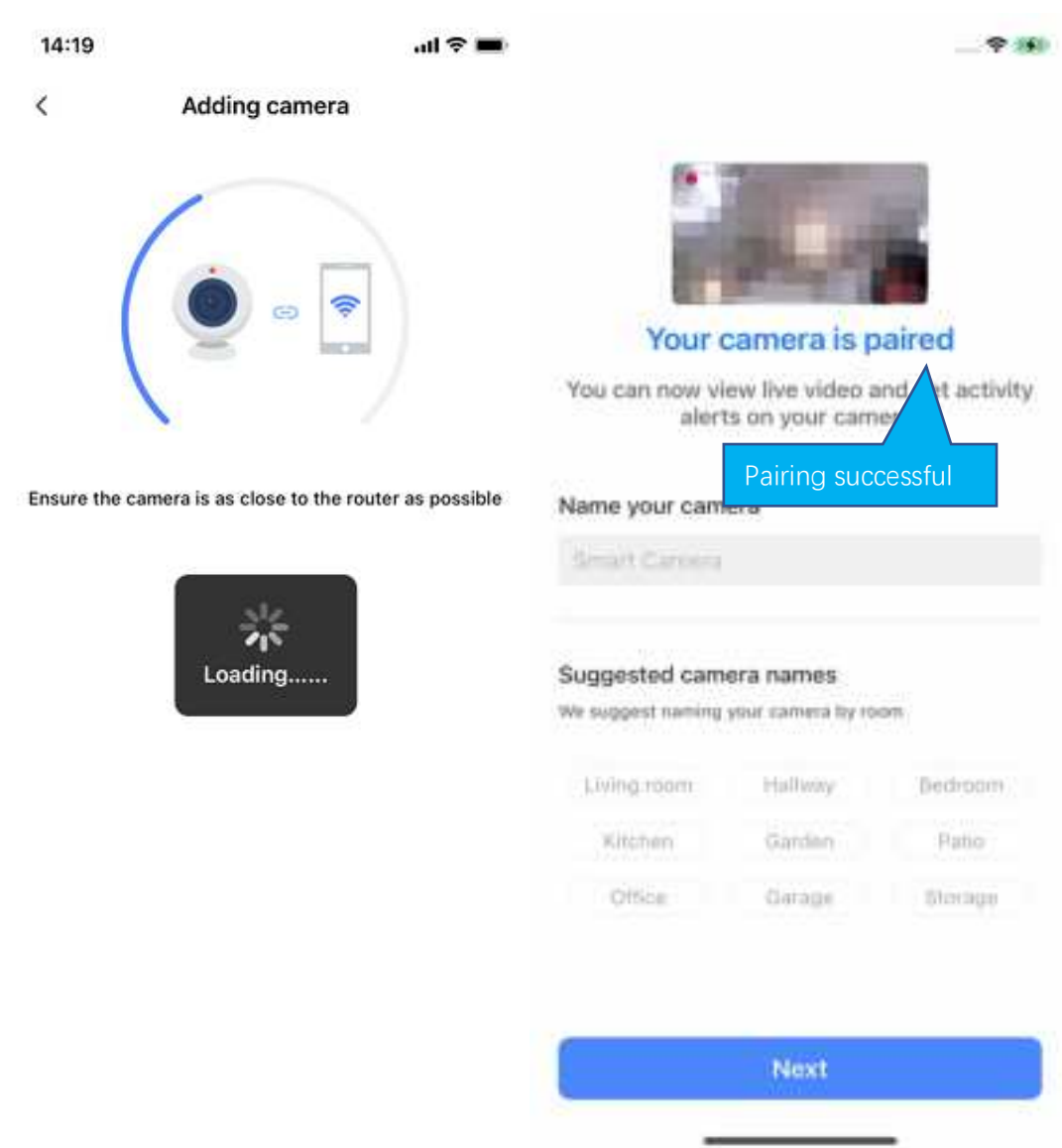
If you hear tips, press next

Next

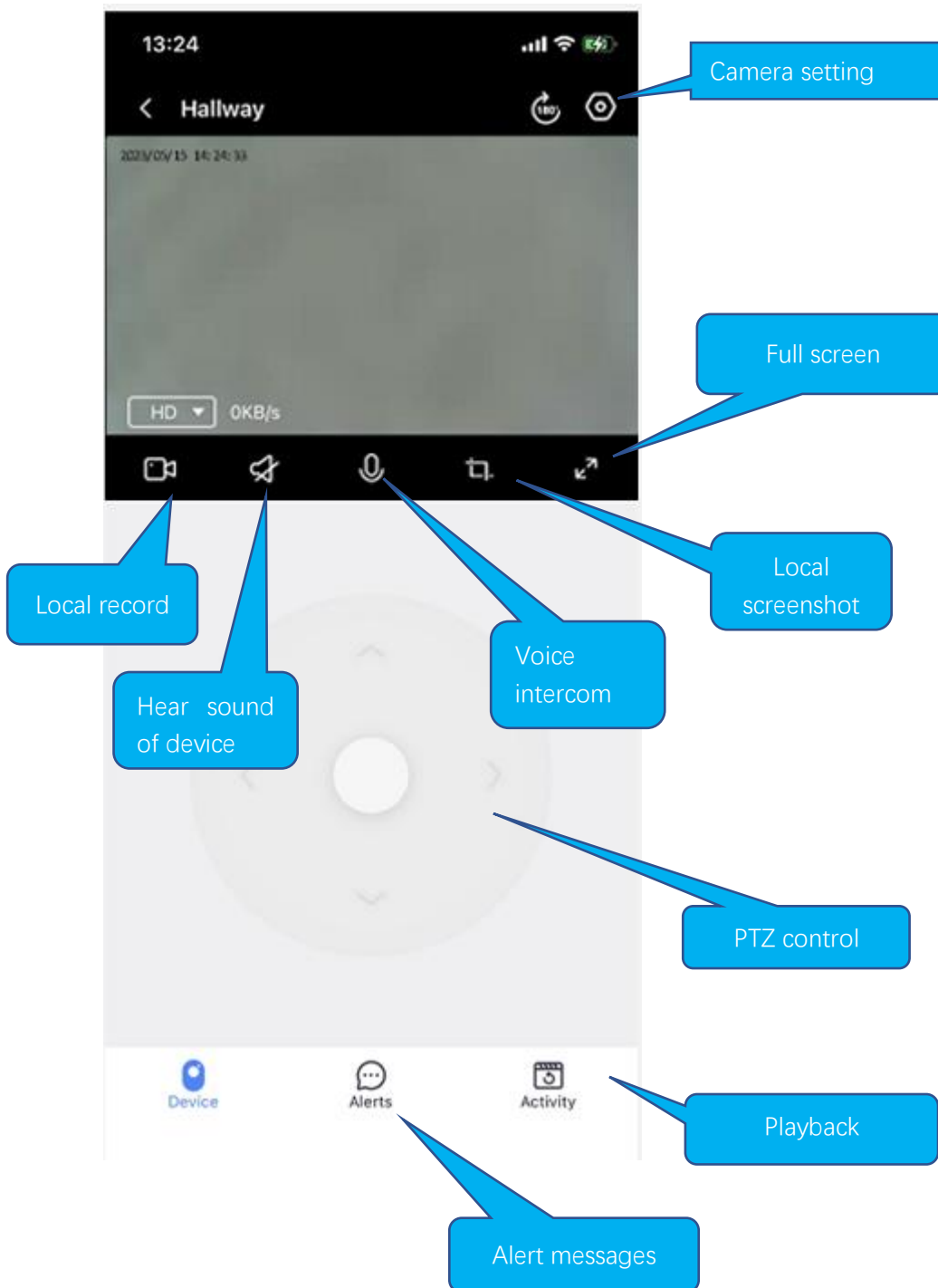
[? If you did not hear anything, tap here.](#)

The QR code that appears on the mobile phone is scanned against the camera lens, and the device emits a prompt sound "QR code scan successful" and "WiFi connected", click Next, and wait for the network configuration to be completed.

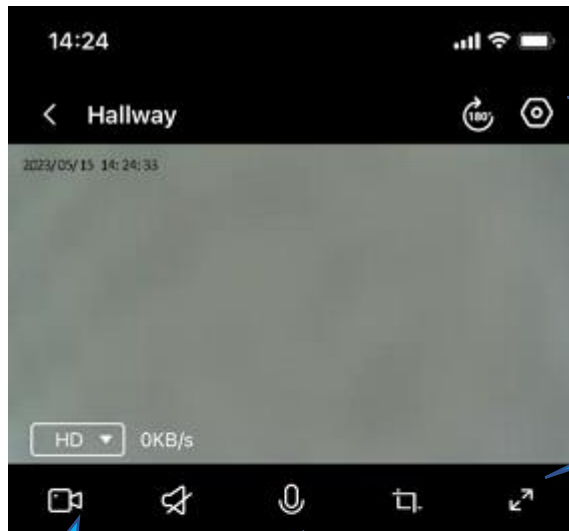
If the camera can successfully connect to Wi-Fi, the app will display the next page.



How to use app



Depending on the hardware capabilities, the functions displayed on the app may be different.
If it isn't a PTZ camera, there isn't a PTZ control panel.



Camera setting

Full screen

Local record

Hear sound
of device

Voice
intercom

Local
screenshot

No detected activities



Alert messages



Playback



< 2022-01-24 >



Smart

15:02

Motion Detected



Smart

14:59

Motion Detected

Alert clip



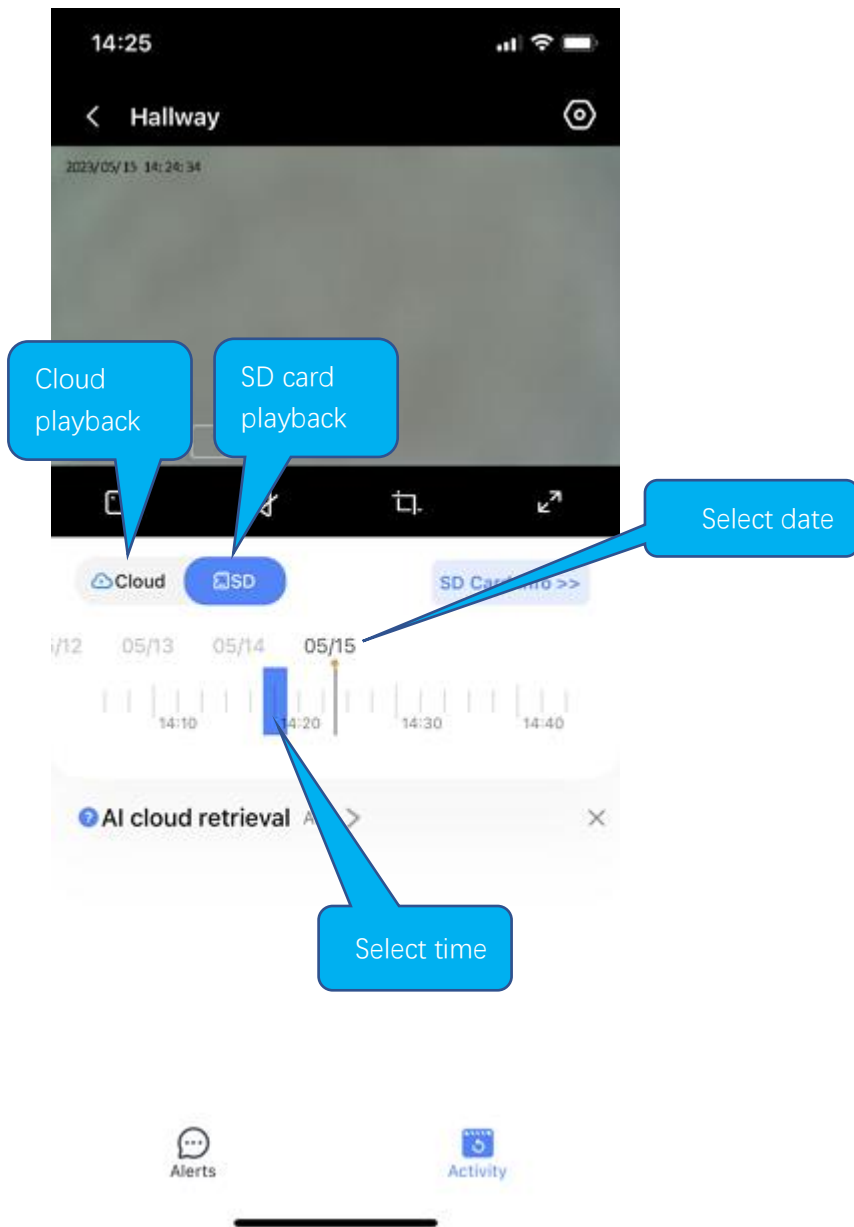
Smart

14:55

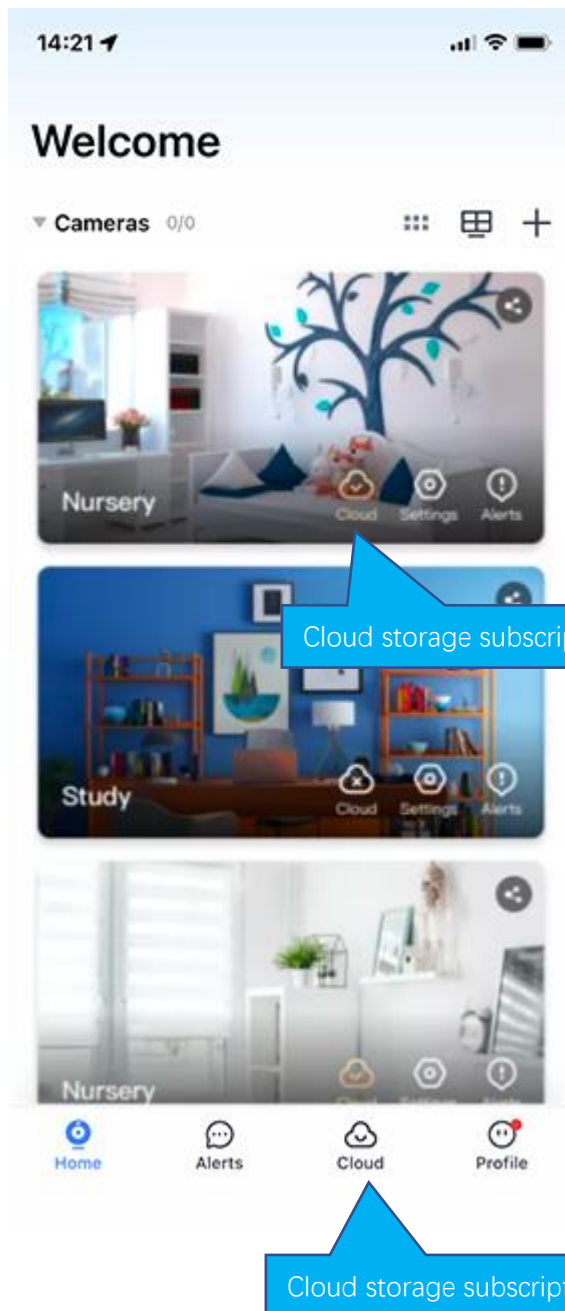
Motion Detected



Alert
message



Cloud storage



Common problems

Q: The camera is offline or offline

1. Check if the power supply is working properly
2. Power off and restart the device to reconnect to the network
3. The signal coverage is weak
4. Signal interference shielding in special places

Q: How does the camera store video

1. The camera supports the F32 format with a maximum capacity of 128G. After the card is recognized, it automatically records, and when the storage is full, it automatically overwrites the original recording and loops recording;
2. Support opening cloud storage service to store video;

For more app-related questions or issues, on the Profile tab in the app, we provide "Customer Service" or "Contact Us" options to help you.

Special statement

The product is subject to the actual product, the instruction manual is for reference only. Mobile phone app and device firmware version support update, users can upgrade through the app.

The manual may contain technical descriptions or inconsistencies with product functions or typographical errors. Please understand, please refer to the final interpretation of our company.

Do not install the product in a place where it is damp, dusty, high temperature, flammable or explosive and out of reach of children.

Note: This equipment has been tested and found to comply with the limits for a Class B digital device, pursuant to part 15 of the FCC Rules. These limits are designed to provide reasonable protection against harmful interference in a residential installation. This equipment generates, uses and can radiate radio frequency energy and, if not installed and used in accordance with the instructions, may cause harmful interference to radio communications. However, there is no guarantee that interference will not occur in a particular installation. If this equipment does cause harmful interference to radio or television reception, which can be determined by turning the equipment off and on, the user is encouraged to try to correct the interference by one or more of the following measures:

- Reorient or relocate the receiving antenna.
- Increase the separation between the equipment and receiver.
-

Connect the equipment into an outlet on a circuit different from that to which the receiver is connected.

- Consult the dealer or an experienced radio/TV technician for help.

Important: Change or modifications not expressly approved by the manufacturer responsible for compliance could void the user's authority to operate the equipment.

This device complies with part 15 of the FCC Rules. Operation is subject to the following two conditions:

(1) This device may not cause harmful interference, and (2) this device must accept any interference received, including interference that may cause undesired operation.

This equipment complies with FCC radiation exposure limits set forth for an uncontrolled environment. This equipment should be installed and operated with minimum distance 20cm between the radiator and your body.



YiloT Camera Instruction

Scan the QR code to download