

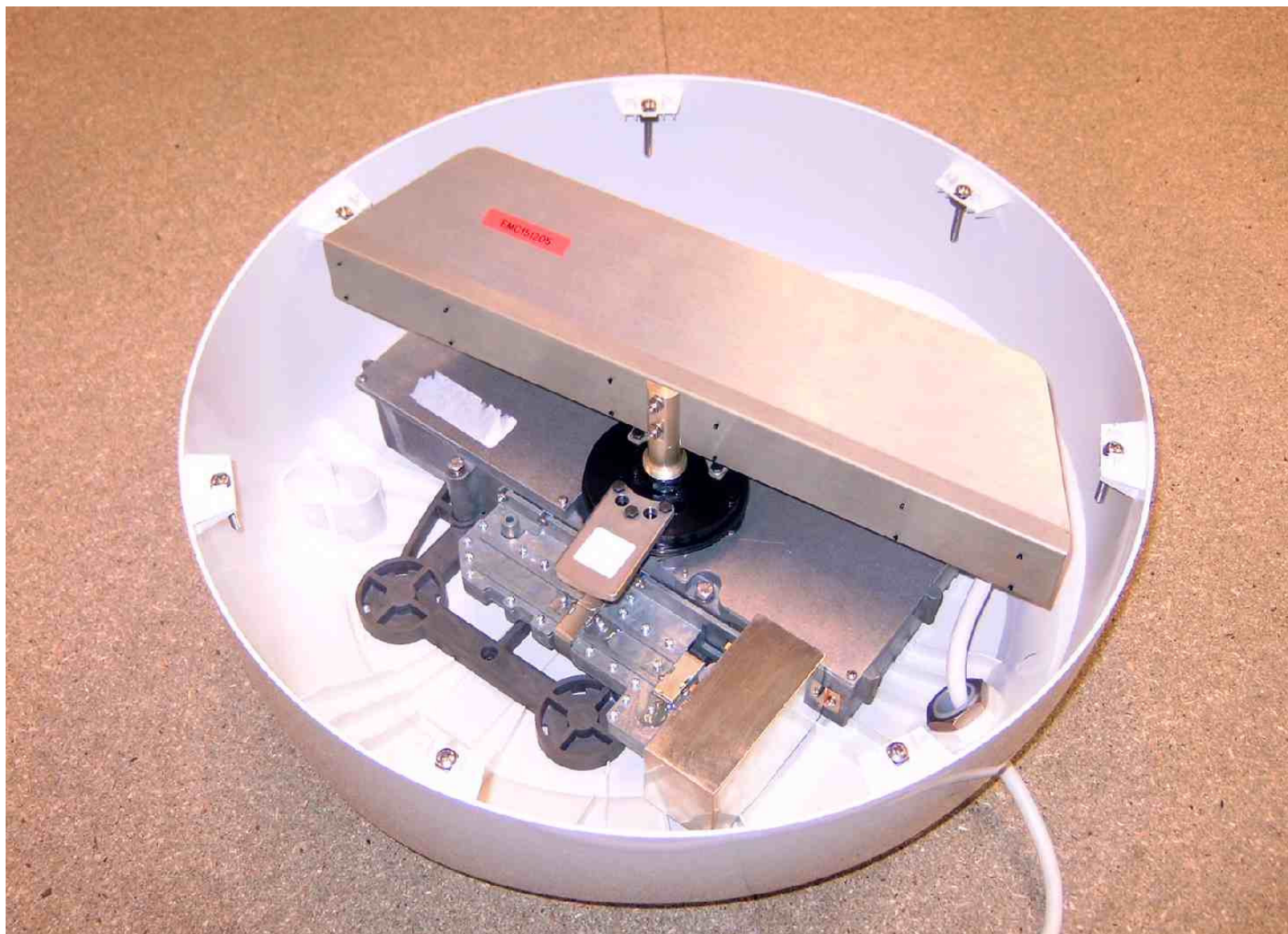


RD218 2kW 18" Radome Scanner

Internal Photographs

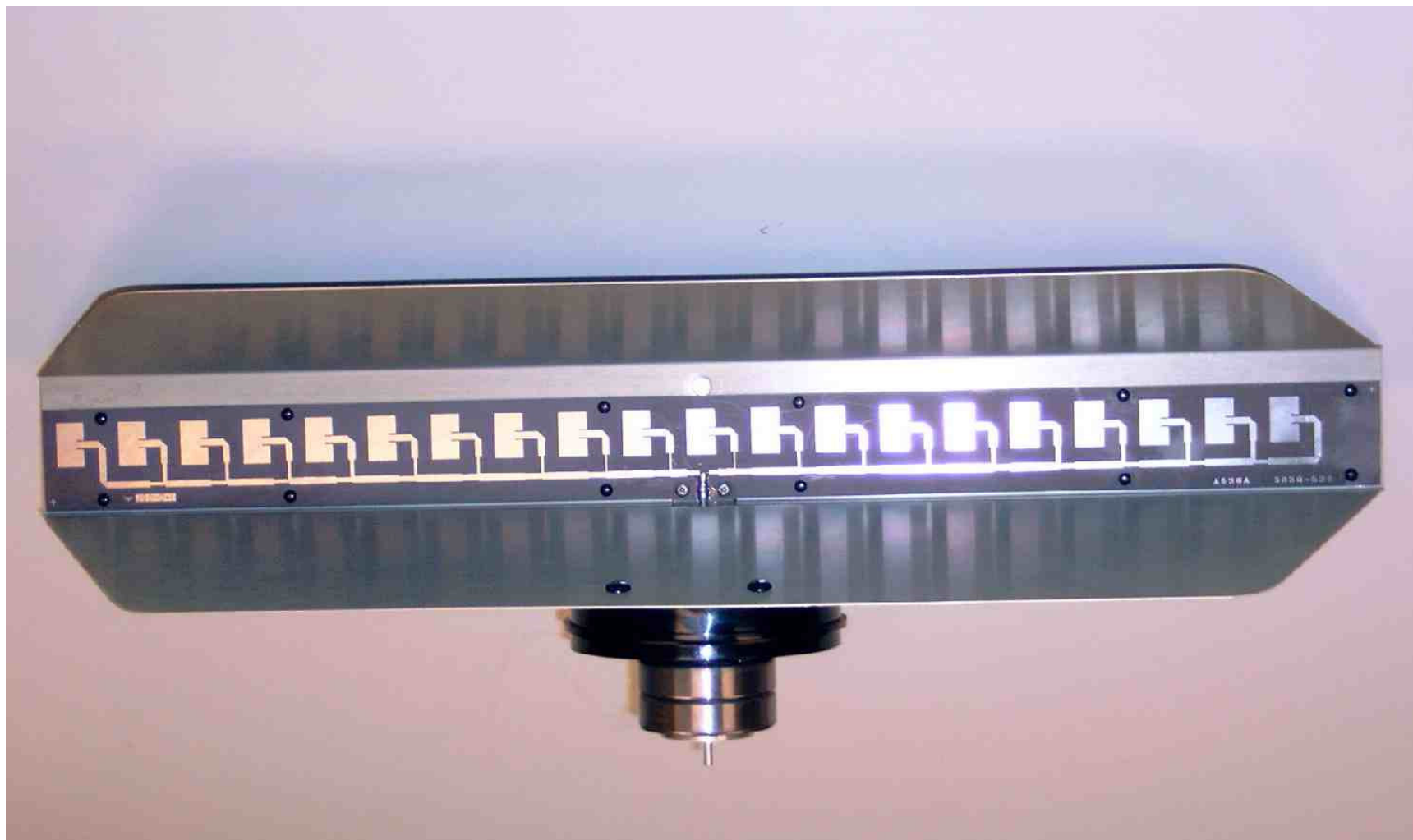
INDEX

Page No.	Description
3	Top cover removed; showing rear view of antenna
4	18" antenna and rotating joint; front view
5	View showing circulator and magnetron screening box
6	Core with cable termination cover plate removed
7	Core with Modulator/PSU assembly cover plate removed
8	Core with I.F. amplifier PCB cover plate removed
9	Core with Magnetron screening box removed
10	Core with I.F. Amplifier PCB removed
11	Core with I.F. Amplifier PCB and Modulator/PSU assembly removed.
12	Core underside showing LNC cover, magnetron and circulator
13	Core underside with LNC cover removed
14	LNC PCB underside
15	LNC PCB top (component) side with screening can removed
16	I.F. PCB Assembly top (component) side
17	I.F. PCB Assembly underside
18	Modulator/PSU Assembly top (component) side
19	Modulator/PSU Assembly underside



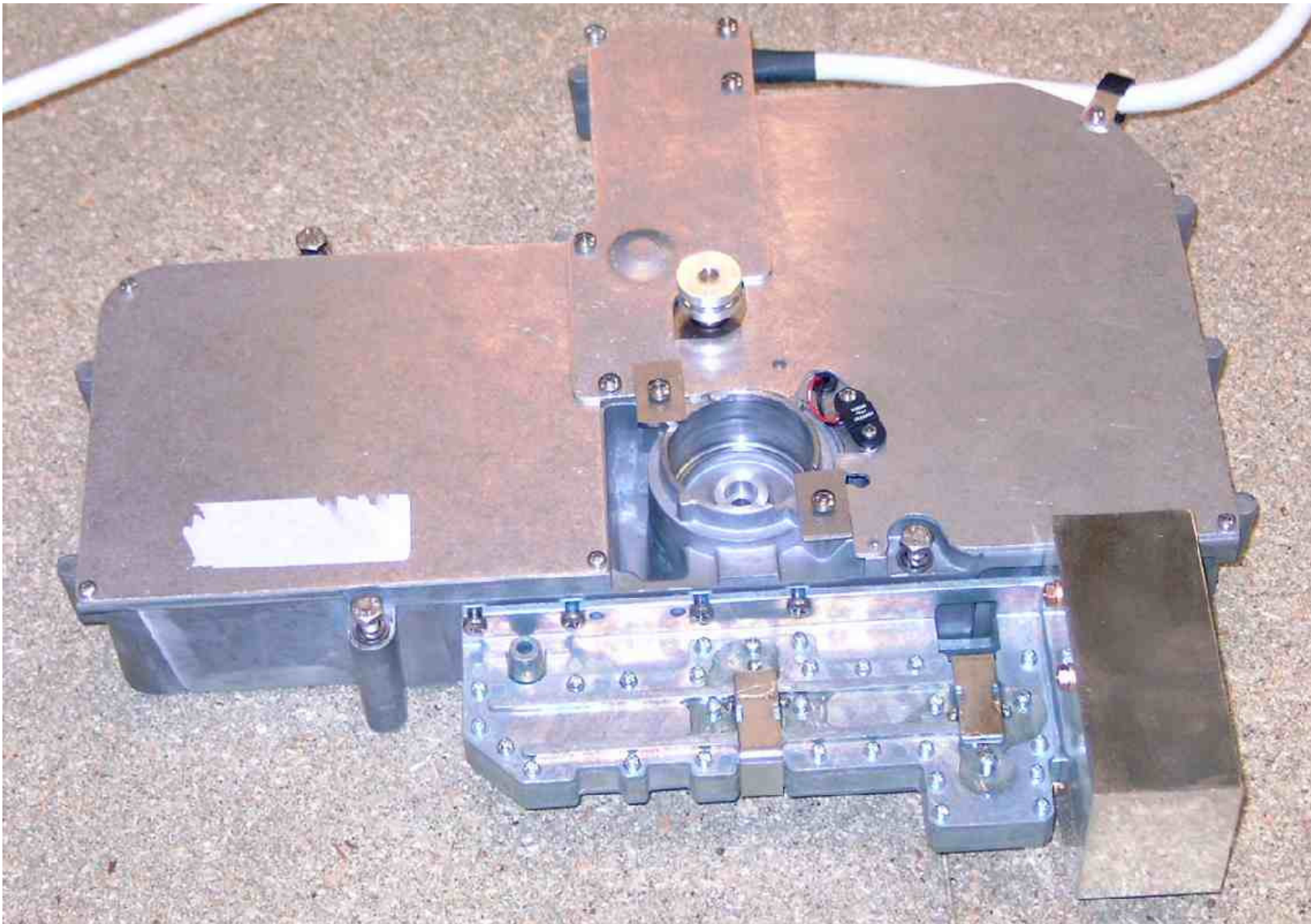
RD218 2kW 18" Radome Scanner

Top cover removed; showing rear view of antenna



RD218 2kW 18" Radome Scanner

18" antenna and rotating joint; front view



RD218 2kW 18" Radome Scanner

Core removed from radome; antenna removed. View showing circulator and magnetron screening box.



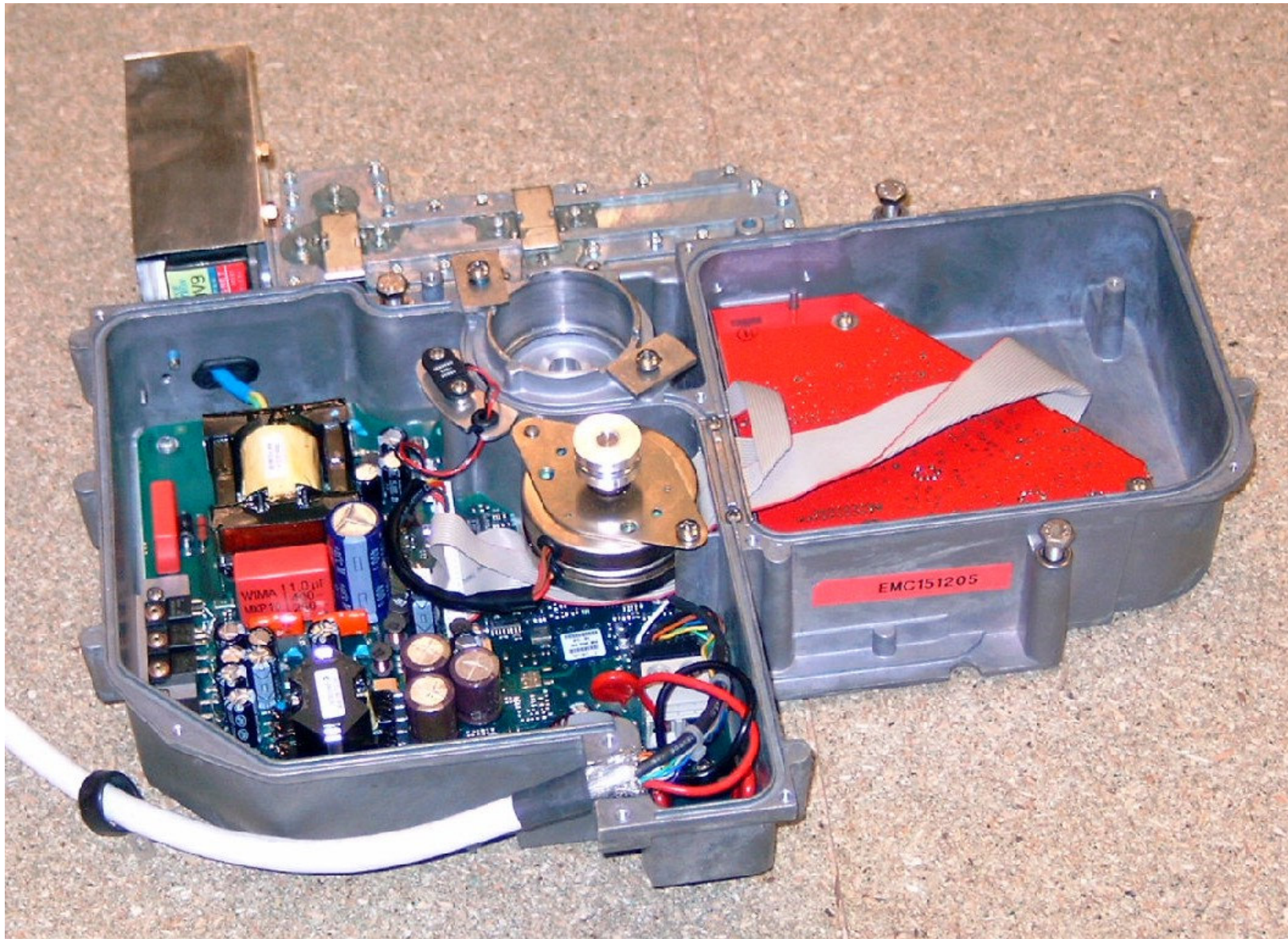
RD218 2kW 18" Radome Scanner

Cable termination cover plate removed



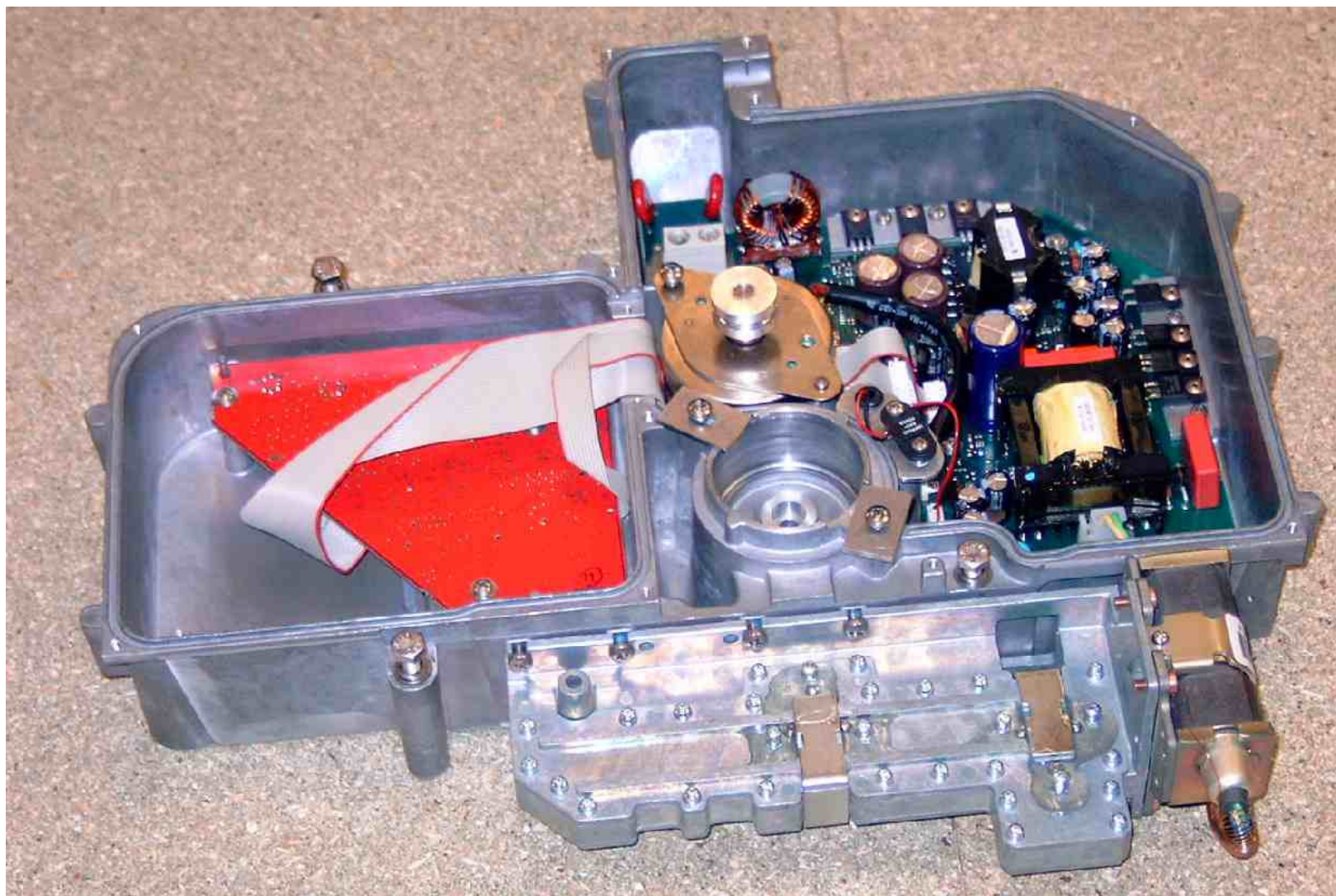
RD218 2kW 18" Radome Scanner

Modulator/PSU assembly cover plate removed



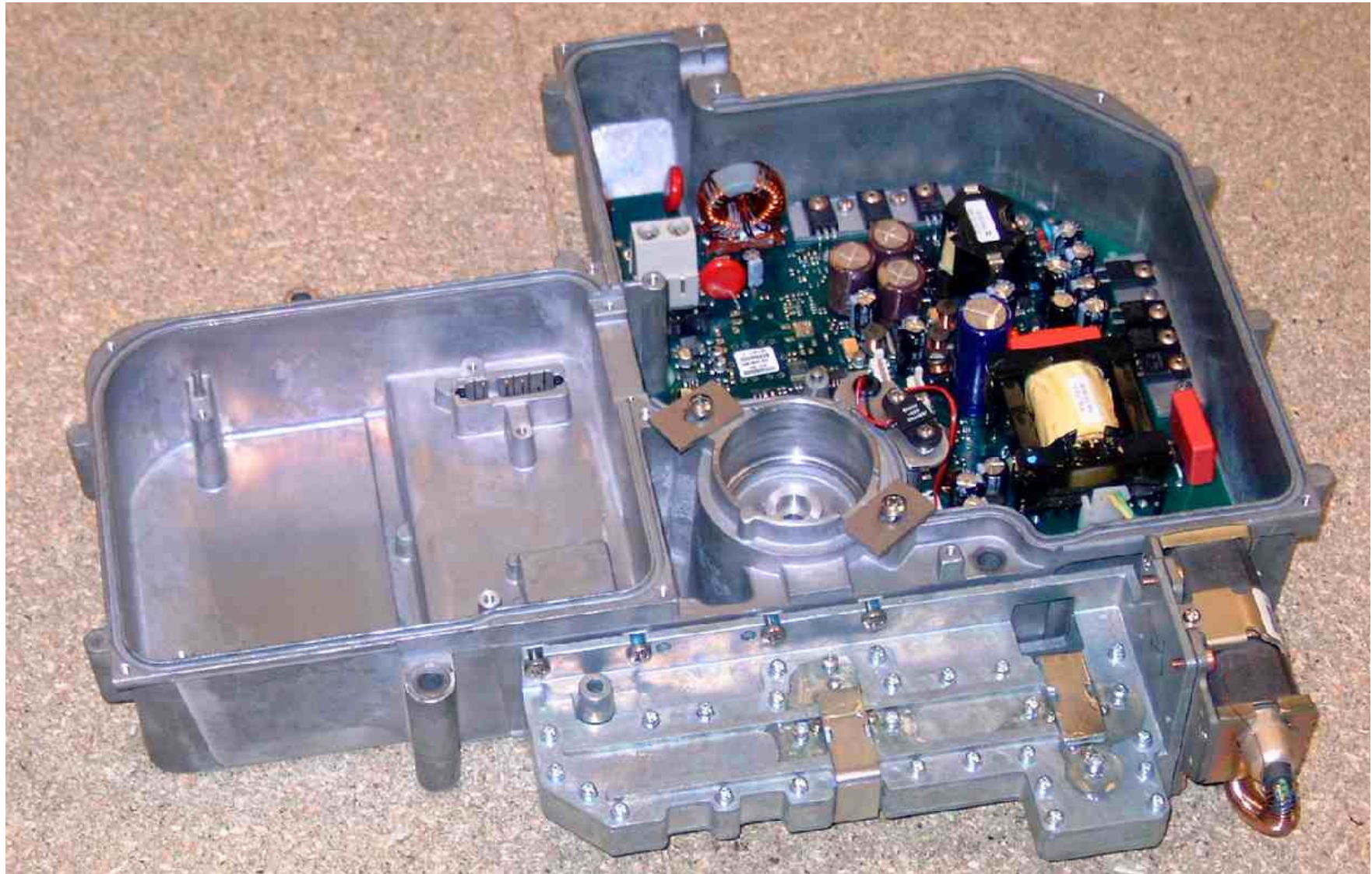
RD218 2kW 18'' Radome Scanner

I.F. amplifier PCB cover plate removed



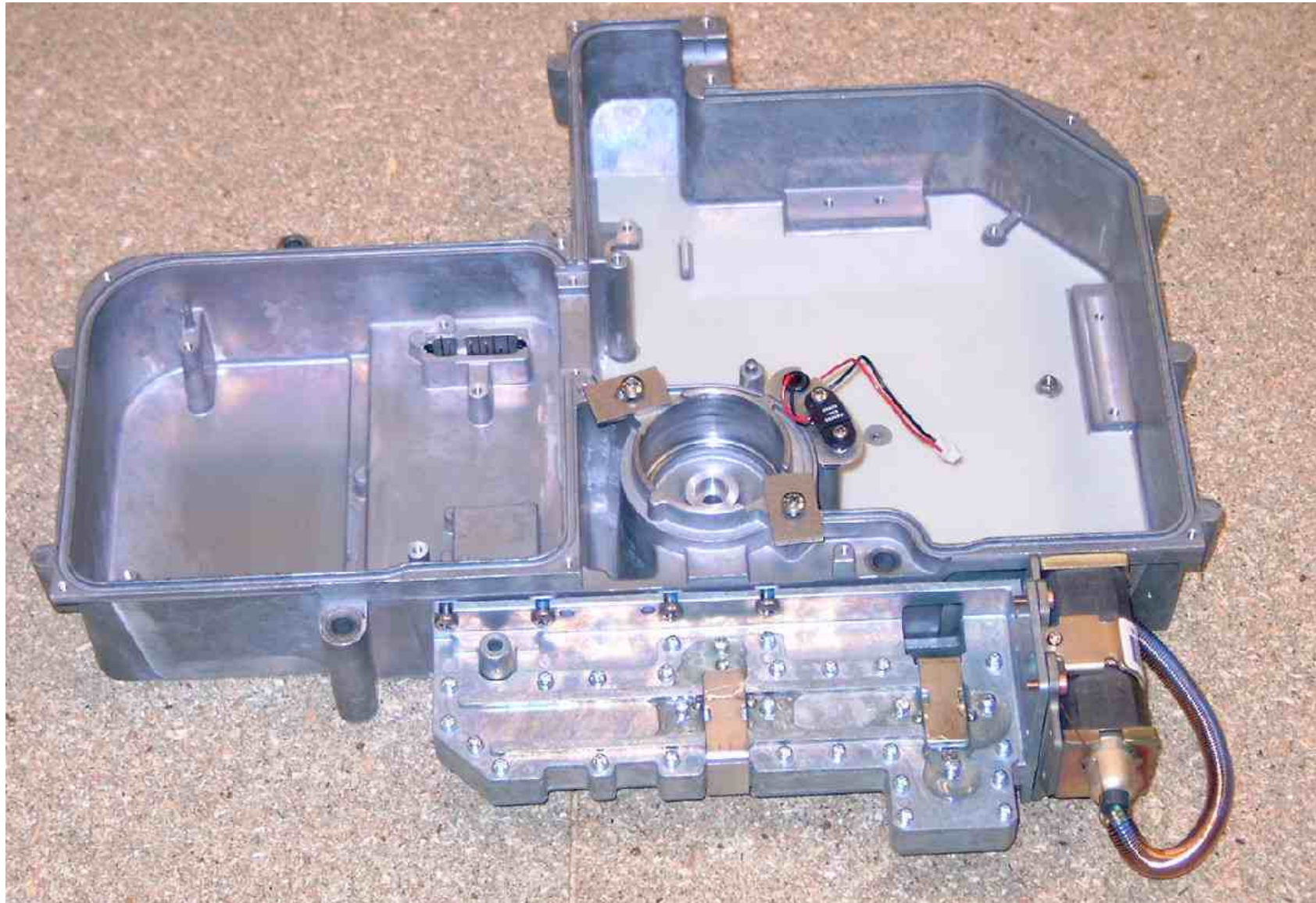
RD218 2kW 18'' Radome Scanner

Magnetron screening box removed



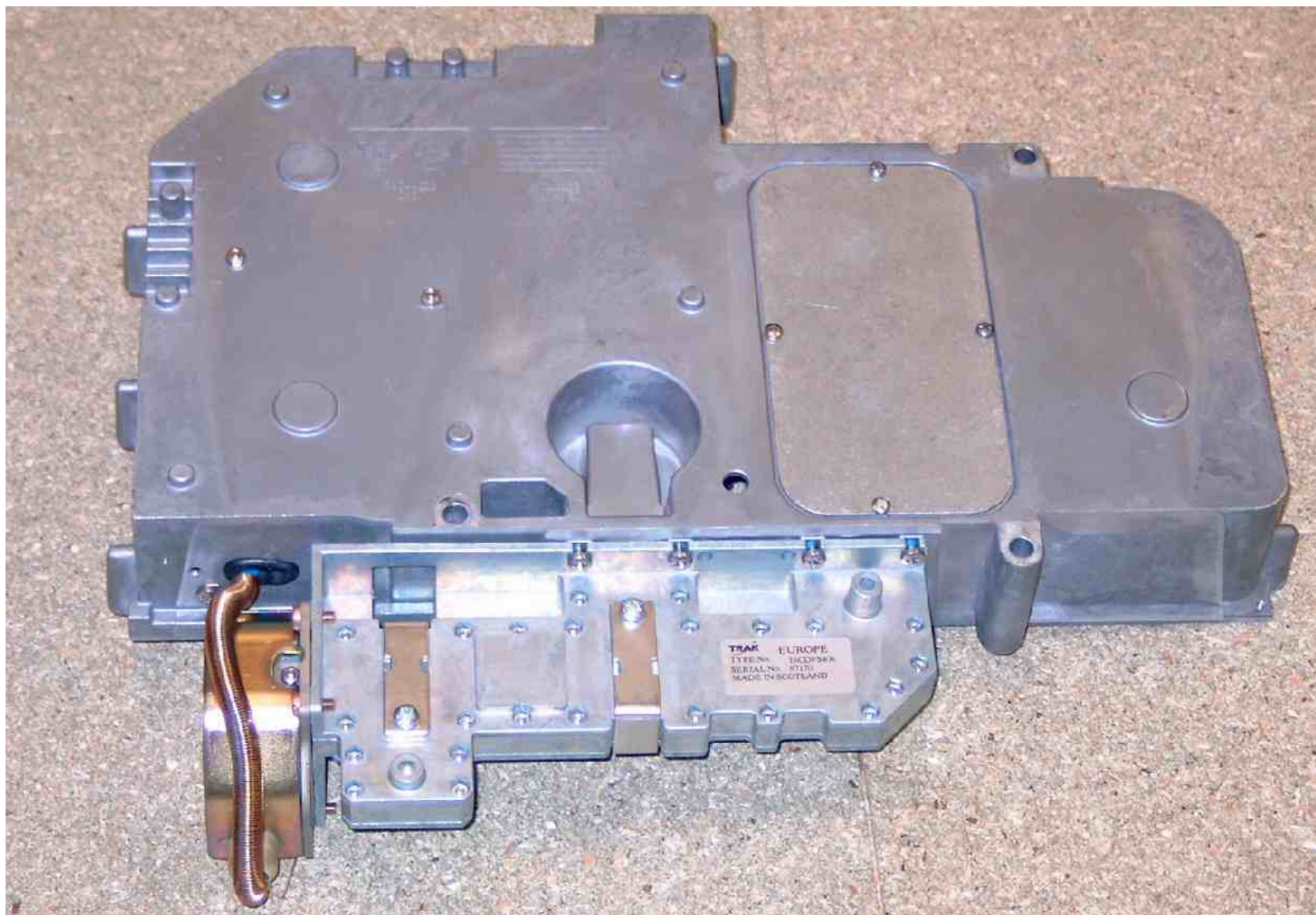
RD218 2kW 18" Radome Scanner

Core with I.F. Amplifier PCB removed



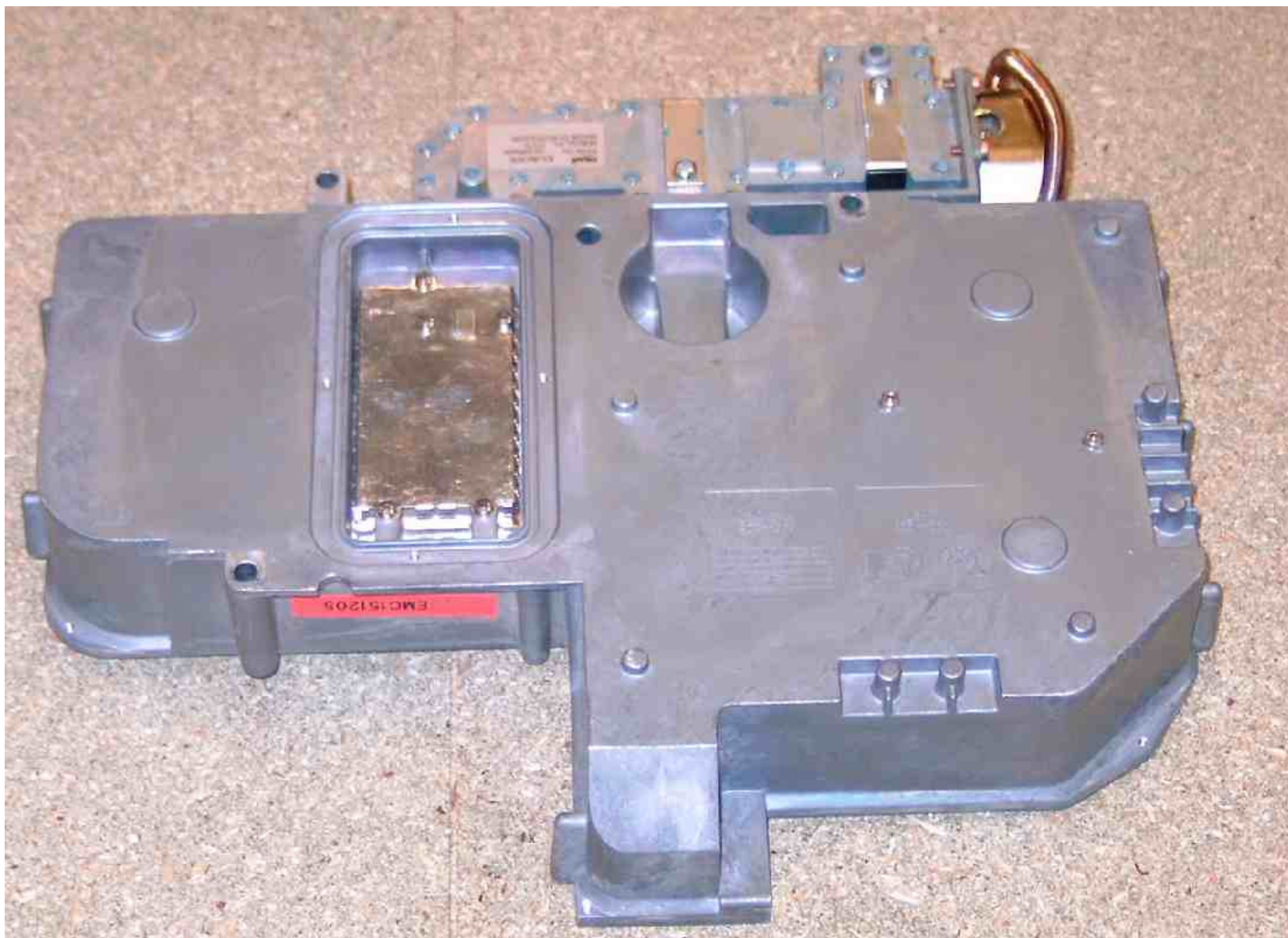
RD218 2kW 18" Radome Scanner

Core with I.F. Amplifier PCB, Modulator/PSU assembly and Motor removed. Heading Marker sensor remains.



RD218 2kW 18'' Radome Scanner

Core underside showing LNC cover, magnetron and circulator



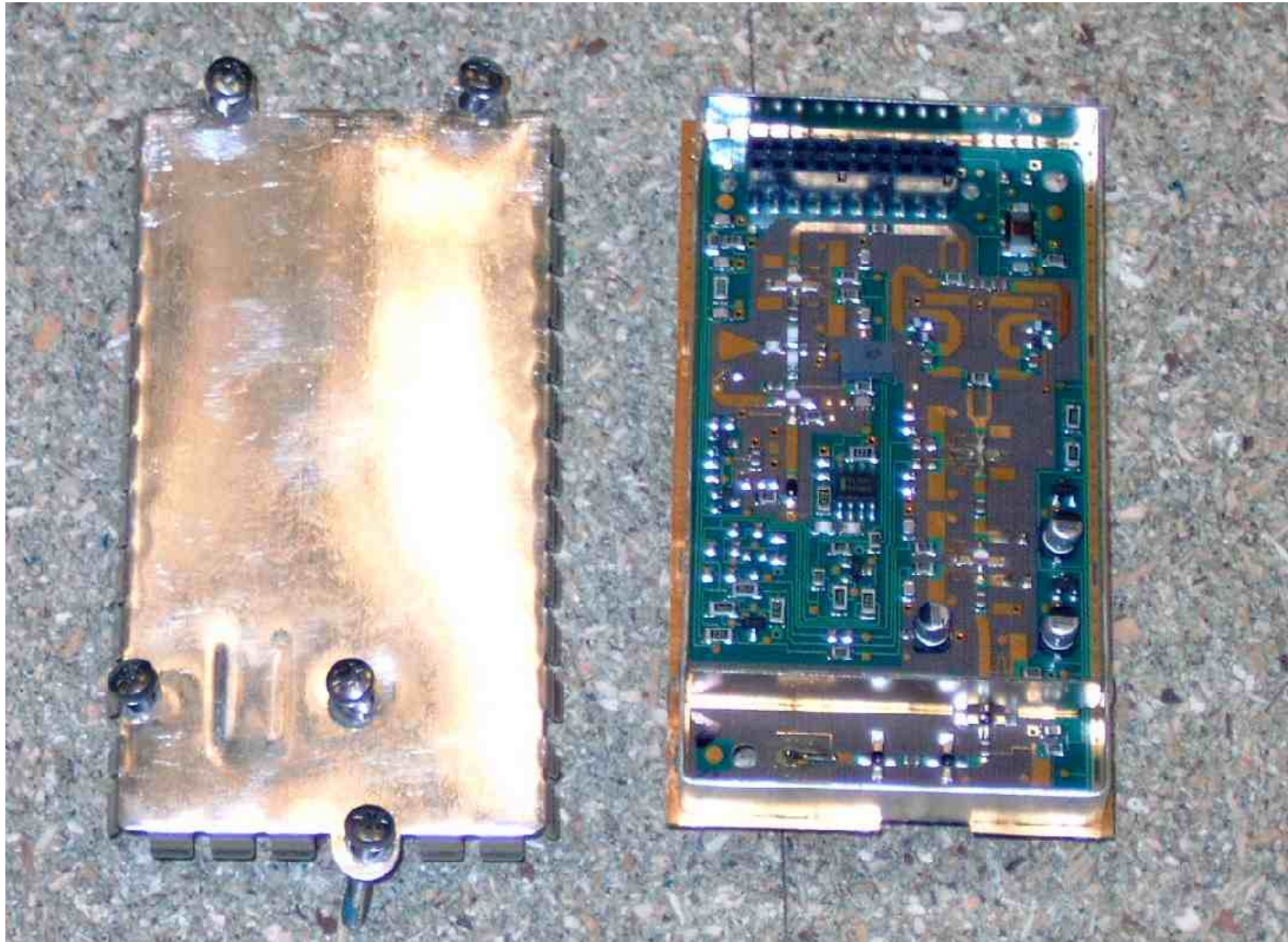
RD218 2kW 18" Radome Scanner

Core underside with LNC cover removed



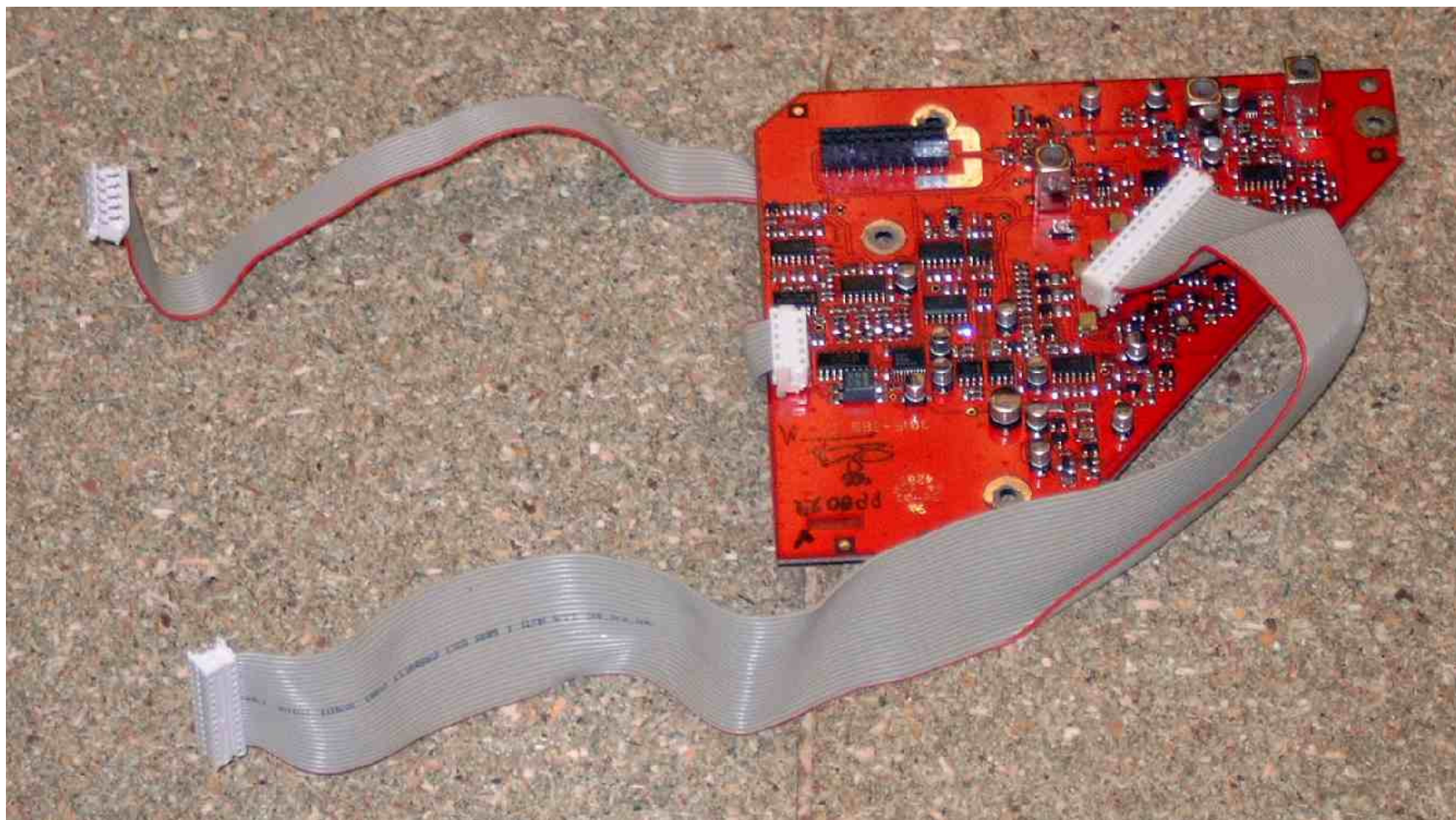
RD218 2kW 18" Radome Scanner

LNC PCB underside



RD218 2kW 18" Radome Scanner

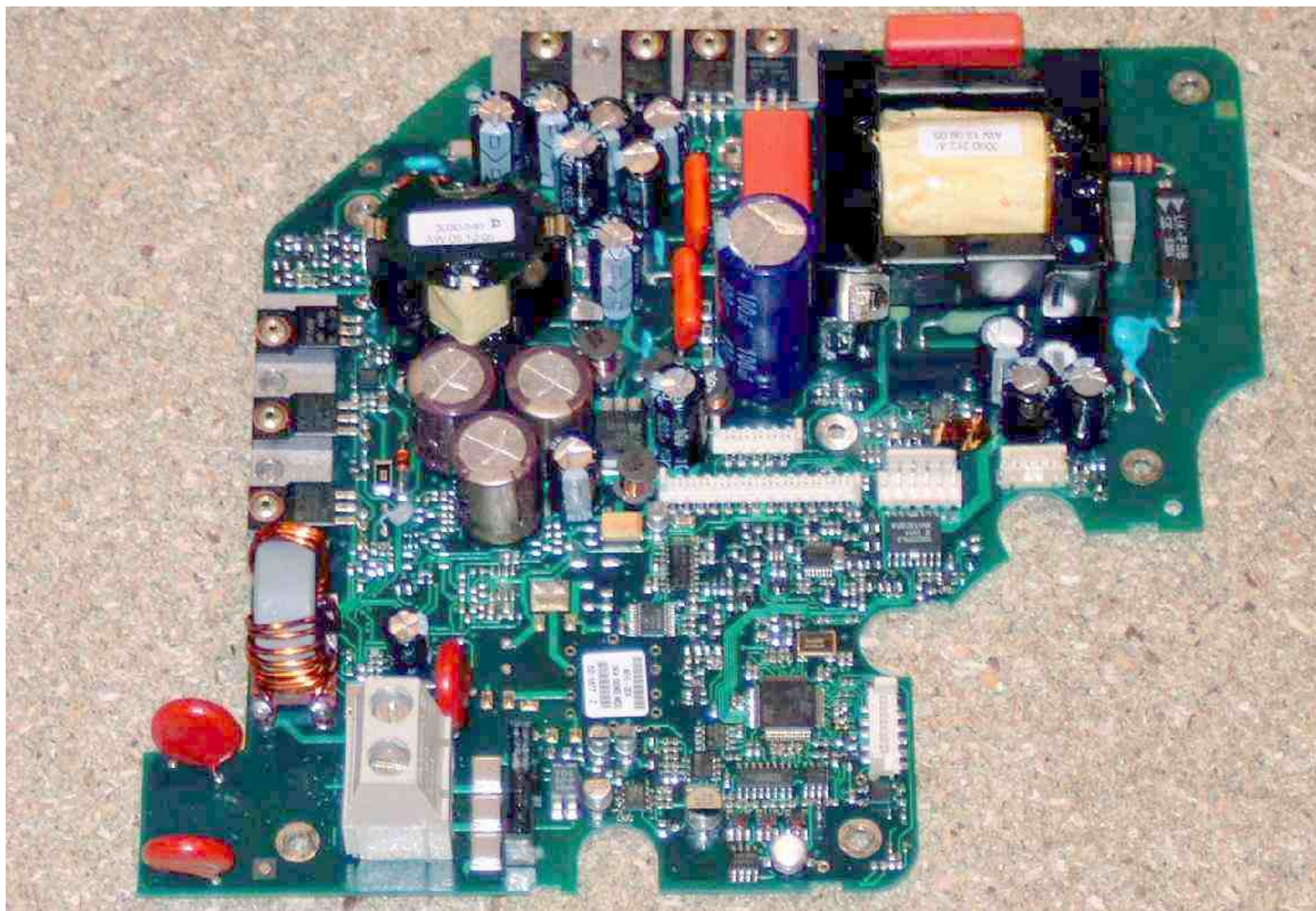
LNC PCB top (component) side with screening can removed
Page 15 of 19



RD218 2kW 18" Radome Scanner

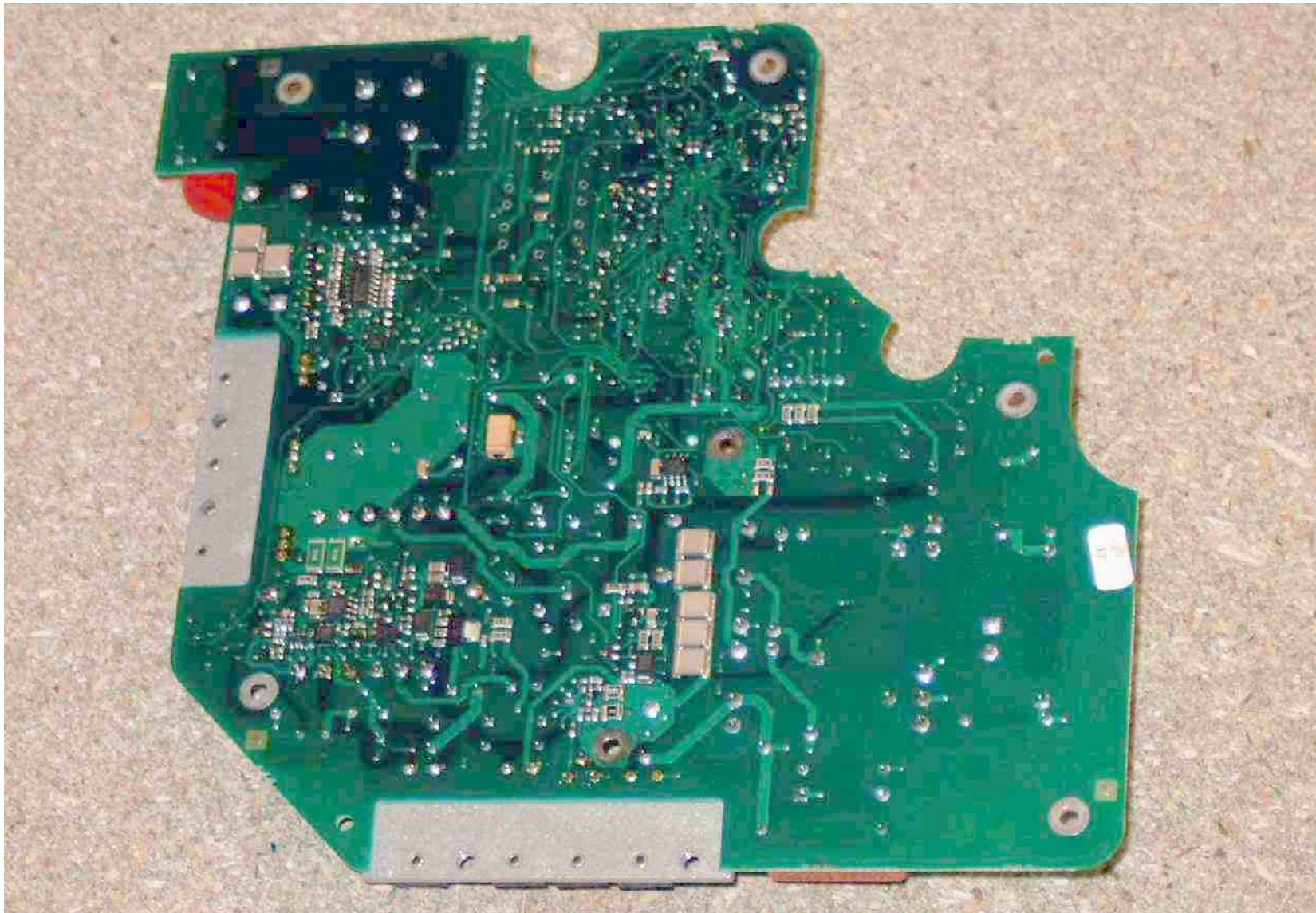
I.F. PCB Assembly top (component) side





RD218 2kW 18" Radome Scanner

Modulator/PSU Assembly top (component) side



RD218 2kW 18" Radome Scanner

Modulator/PSU Assembly underside