

## PHOTOGRAPHS OF THE TEST CONFIGURATION

### CONDUCTED EMISSION TEST



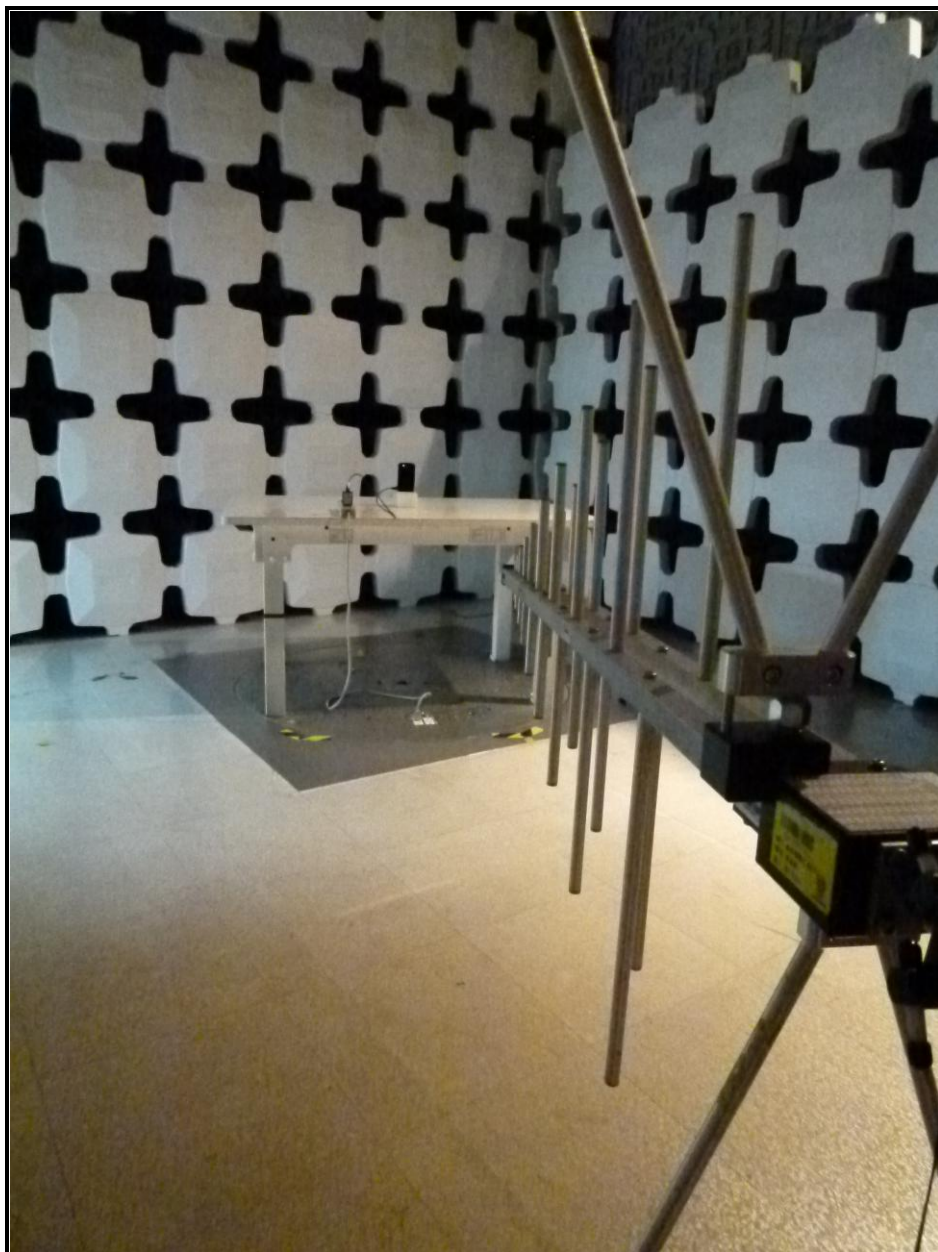
RADIATED EMISSION TEST BELOW 1GHz  
(Y-Plane)







RADIATED EMISSION TEST BELOW 1GHz  
(Z-Plane)





RADIATED EMISSION TEST ABOVE 1GHz  
(Y-Plane)







RADIATED EMISSION TEST ABOVE 1GHz  
(Z-Plane)



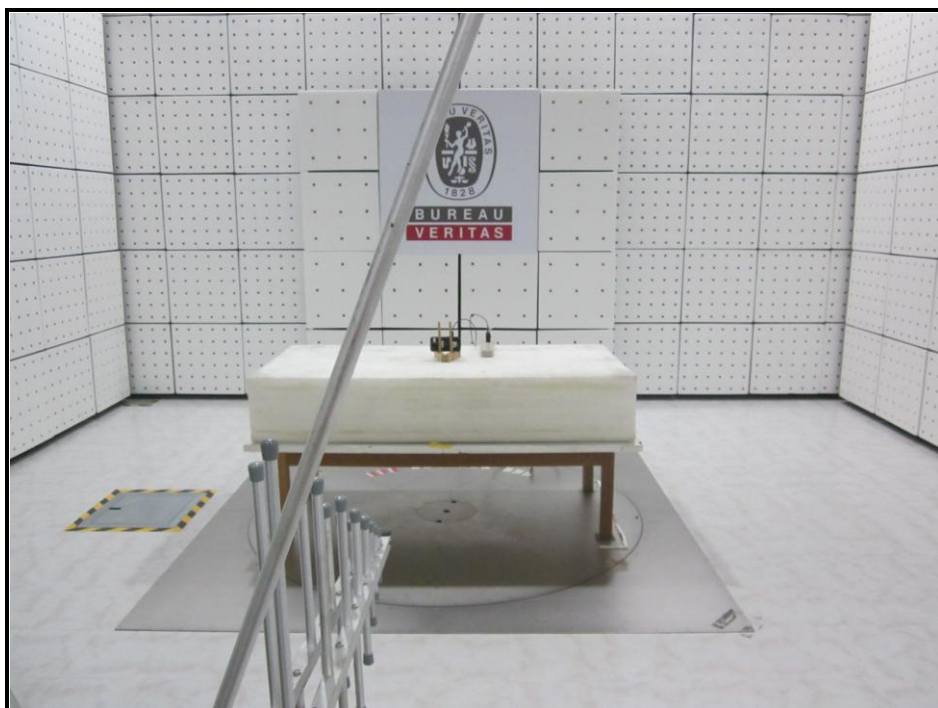
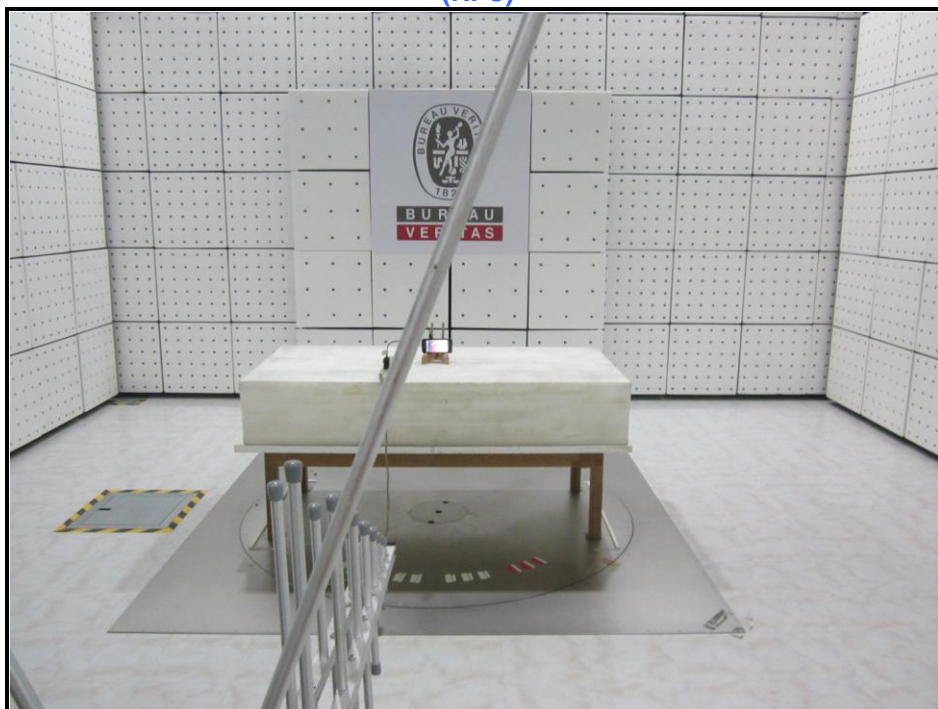




## RADIATED EMISSION TEST BELOW 30MHz (NFC)



## RADIATED EMISSION TEST 30MHz~1GHz (NFC)





(DFS)

Set UUT as Client without radar detection mode (Radar injected into Master)

