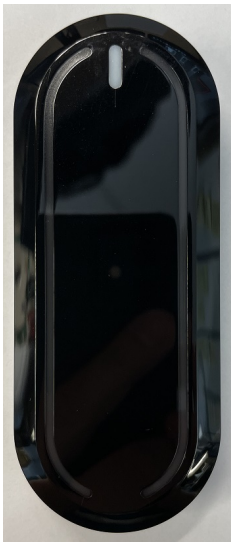


## Internal Photos

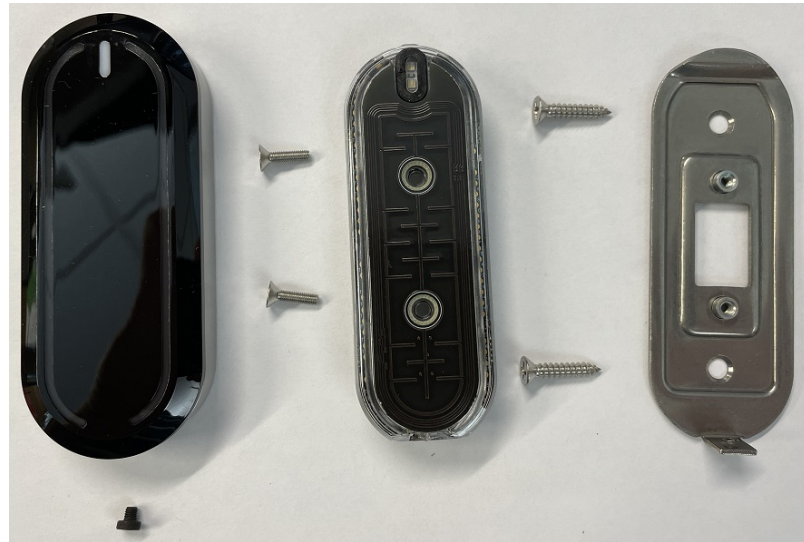
The Serene Wall Reader system consists of the following main components:

- Serene Wall Reader
- Smart Relay Board (SRB)
- Expansion Relay Board (ERB) – optional

The following photos depict the internal construction of Serene Wall Reader:



Assembled



Top level assembly



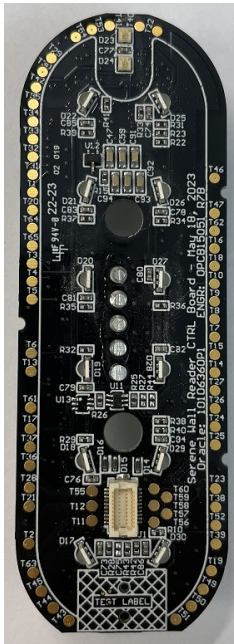
Electrical assembly: top

bottom



disassembled (potting absent)

## Wall Reader Individual PCB Views



Control Board: top



bottom



Antenna Board: top



bottom

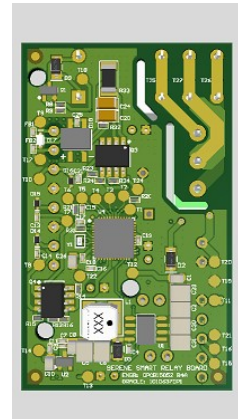
## Smart Relay Board



Smart Relay Board assembly

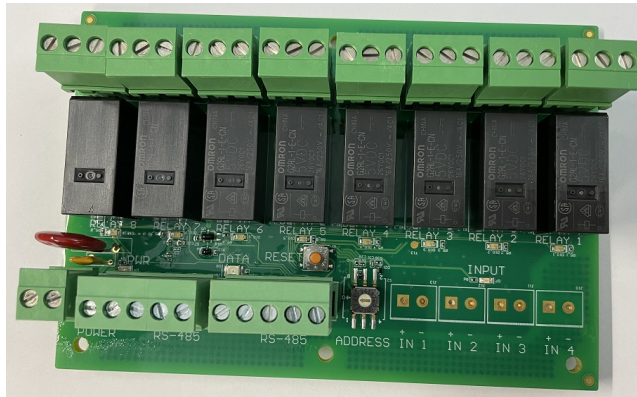


Board: top

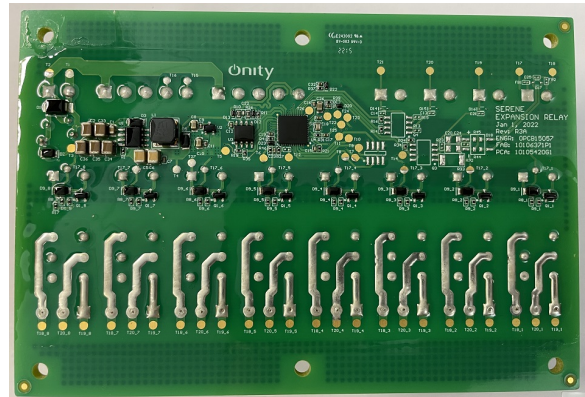


bottom

## Expansion Relay Board Individual PCB Views



Top



bottom