

Product Name:Smart Watch

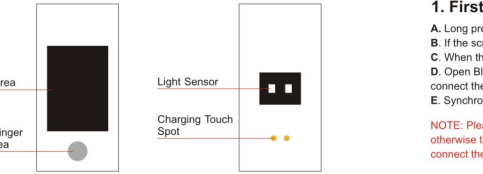
Brand Name:BYM

User Manual

Model Name:B32, B31, B33, B35, B36, B37, B38, B39, B40, B41, B42, B43, B45, B46, B50, B51, B52, B53, B55, B56, B57, B58, B59, B60, B61, B62, B63, B65, B66, B67, B68, B69

V 1.2

◆ Appearance

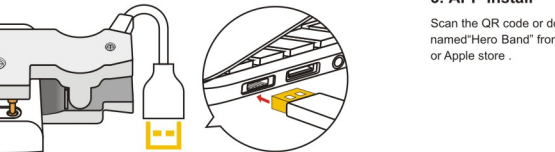


◆ How To Charge?

As the picture below shows:

- 1.Find the charging touch spot at the back of the bracelet
 - 2.Use the charger aim at the touch spots for charging.
- We suggest you charge it by connecting your computer USB port which would be safe for the fitness tracker.

(Do not use power bank over 2A to charge,otherwise it may damage the fitness tracker.)



◆ Operating Instruction

1. First Time Use Instruction

- A. Long press the " Hidden Finger touch area" till the screen light up, then it is starting up.
- B. If the screen can't be light up, charge it for 2-3 hours, then try to re-start it up.
- C. When the bracelet is staring up, use your cellphone download APP " Hero Band".
- D. Open Bluetooth in your cellphone,and go to the APP to find the device name and connect the bracelet with the app.
- E. Synchronize your bracelet with the APP.

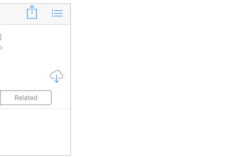
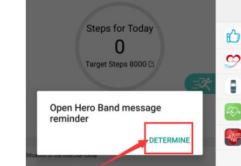
NOTE: Please do not use Android phone's Bluetooth directly connecting with the bracelet, otherwise the bracelet's function can not be used normally .You need go into the APP to connect them.

2. Functions Introduction



3. APP Install

Scan the QR code or download app named"Hero Band" from Google Play or Apple store .

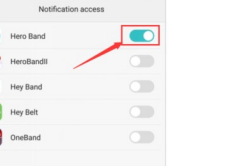


Cellphone System Version Requirement:
1. Android 4.4 or Above, Bluetooth 4.0 or Above,
2. IOS 9.0 or Above.

4. Bracelet's Connection

- ①1.Open the application "Hero band " on mobile phone to enter into its home page.
a.For Android phones, when you first go to this app by android phones, the bracelet will pop up a note " Please open Hero Band message reminder" please click " OK".
b.Then turn on the button in your phone "setting" to allow " Hero Band" to visit.

NOTE:Please do not use smart phone's Bluetooth directly pairing with the bracelet, otherwise the bracelet 's functions can not be used normally as following picture.



- ②Choose "connect device" then click "Binding Management", the application will search for the smart bracelet ,users will find a blue-tooth device named "C6xxxxx",click and bind with it (As image 1 below).

[NOTE: If users use smart phone with IOS system , when finished connection, please click "Pair" in the pop-up pairing request, otherwise bracelet will not provide the reminder of the calls' coming and SMS and social APP messages. (As image 2 below)]

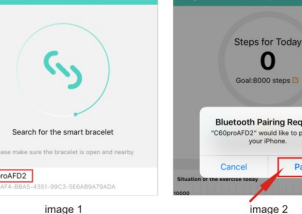


image 1

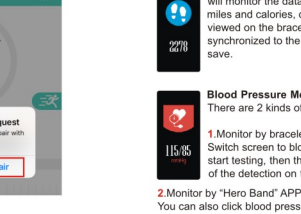
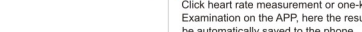


image 2

5. Main Function Specification

Start up and Shutdown: For start up, long press the "hidden finger touch area" key in the screen middle bottom. For shutdown, click the screen "hidden finger touch area" switch to the Shutdown Mode on the device, and press for 3 seconds till screen turn dark.



Monitor Heart Rate: 2 Kind of ways to monitor.
1.Monitor by bracelet directly. Switch band to heart rate interface, long press the touch area to start to test, green light on the back of the bracelet will light up, the result of the detection on the bracelet will not be saved.
2.Monitor by "Hero Band" APP on cellphone. Click heart rate measurement or one-key Examination on the APP, here the results will be automatically saved to the phone.

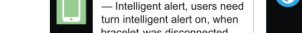


NOTE:
1. When you begin to monitoring the heart rate, please make sure the bracelet worn close to your wrist skin. Heart Rate Data is not correct when you are doing intense sports. We suggest you monitor the data when you are quiet and feel peaceful, then the data would be more reference valuable. This device can't compare with professional medical tool, just for reference, data can't guarantee for 100% correct. It exists some error. Please know.

Sport Monitor: The bracelet will monitor the data of steps , miles and calories, data can be viewed on the bracelet or synchronized to the APP to save.

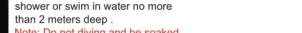


Sleep Monitor: When you fall asleep with this bracelet, the bracelet automatically monitors your sleep, and the data can be viewed on your phone or synchronized with your APP to save.



Disconnection Reminders: Please operate App as Connect Device — General settings — Intelligent Anti-lost — Intelligent alert, users need turn intelligent alert on, when bracelet was disconnected with smart phone, the bracelet will vibrate to remind.

Waterproof: This product waterproof grade is IPX7 , users can wear it when washing hands or in the rain, shower or swim in water no more than 2 meters deep .
Note: Do not diving and be soaked for a long time or use it in hot water bath .

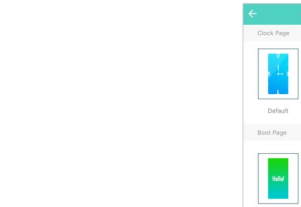


Sedentary Remind: This function needs to open and set at APP, when the bracelet monitoring you are reaching the setting value of long sitting or long immovability status, it will vibrate to remind you have some activities.

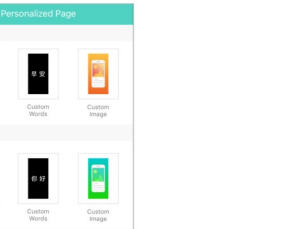
Remote Photograph: Users could enter into the camera interface by "ME" at APP, then press the touch area to remote control cell phone's camera. Photos can be viewed in the phone's album.



- ③ Left slide the page to enter into the sleep page ,you could check the user's sleep data last night including deep sleep time / light sleep time / total sleep time.



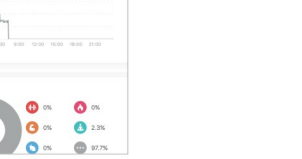
- ④Personalized interface: in the APP, according to personal preferences, the hand ring is raised with a bright screen, open machine, and turn off the picture, set as custom pictures, text and so on.



⑥Monitor the heart rate regularly. In APP side to open the heart rate measured regularly, bracelets to every 5 minutes at a time measurement, the measured data will be in the APP/heart rate + display interface to curve, must be in the interface dropdown refresh will be synchronized to the APP.
(note that open heart rate monitoring will significantly reduce the battery life after each charge.) **See below:**



⑧ Palming Bright Screen Function. Click connect device then click general setting ,it will turn palming bright screen function .When Palming or raising hand, make the screen face to your eyes, try to keep your eyes sight and the screen in a line, it will increase the probability of bright screen .



⑦ Bracelet Firmware Version Upgrade.

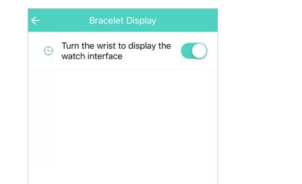
The firmware is the software of the bracelet. When the APP has show a red dot, it indicates that a new firmware version needs to be upgraded. In order to have a better experience for the bracelet, please upgrade it to the latest version as soon as possible.

When the firmware is upgraded, the bracelet must be close to the phone, do not operate the mobile phone, keep the network open, and keep the phone screen bright. If there is an upgrade failure, you can research the connecting Bracelet in APP and continue to click the firmware upgrade. If fail many times after upgrading, it is recommended to upgrade firmware with a mobile phone.



⑨ Bracelet Display.

Click connect device then click bracelet display ,users will turn palming bright screen function then bracelet will show a very cool watch interface.



◆ FAQ:

- 1. Why the bracelet cannot receive the calls/SMS/QQ/We-chat message reminder?**
a. For IOS system phones, when you connect it with bracelet for first time ,it will pop-up a message "Bluetooth pairing"on mobile phone ,users must click pairing .
b. For Android system phones, when you log in the APP for first time ,it will pop up a alert notification on mobile phone,click"OK"/"Yes" to authorize and allow "Hero band" APP to access .
- 2. Why the data detected by the bracelet are not so correct?**
When detecting, your wrist's back skin need get tightly close with the bracelet so that the sensor can monitor the more correct data. And put your wrist at the same height of your heart when monitoring.
- 3. Why the Remote Photograph function doesn't work?**
When bracelet was bind with mobile phone ,make sure the APP has authority to control your phone's camera. And when use the mobile phone with IOS system,users need enter into any page of the App in advance, then long press touch key of bracelet in camera page.
- 4. Why the Bracelet 's calls coming reminder or SMS coming reminder didn't work or screen did not show the caller 's name?**
Open all the permission in your mobile phone "Setting"—" Application Management"—"Hero band", including phones, message,phone book.
- 5. Why I can't find the bracelet name on APP?**
a.Check if you have open the Bluetooth function.
b.Some of phones with Android system 6.0 or above must open GPS function and let the bracelet's APP get the authority to visit your GPS location.
c.If still failed, power off the bracelet for some time, and then try to re-start your phone's Bluetooth.
- 6. Why Pedometer 's function doesn't work?**
Bracelet need bind with APP before using it, when users finish synchronizing time, bracelet will start recording steps and do other functions.
- 7. Why Palming bright screen function can't work well?**
This function only can work when users have open this function at APP. In order to increase the probability of bright screen, keep your eye sight and the bracelet screen at the same horizontal direction.

FCC Caution.

This device complies with part 15 of the FCC Rules. Operation is subject to the following two conditions:

- (1) This device may not cause harmful interference, and
- (2) this device must accept any interference received, including interference that may cause undesired operation.

Any Changes or modifications not expressly approved by the party responsible for compliance could void the user's authority to operate the equipment.

Note: This equipment has been tested and found to comply with the limits for a Class B digital device, pursuant to part 15 of the FCC Rules. These limits are designed to provide reasonable protection against harmful interference in a residential installation. This equipment generates uses and can radiate radio frequency energy and, if not installed and used in accordance with the instructions, may cause harmful interference to radio communications. However, there is no guarantee that interference will not occur in a particular installation. If this equipment does cause harmful interference to radio or television reception, which can be determined by turning the equipment off and on, the user is encouraged to try to correct the interference by one or more of the following measures:

- Reorient or relocate the receiving antenna.
- Increase the separation between the equipment and receiver.
- Connect the equipment into an outlet on a circuit different from that to which the receiver is connected.
- Consult the dealer or an experienced radio/TV technician for help.

The device has been evaluated to meet general RF exposure requirement. The device can be used in portable exposure condition without restriction.