


18. TEST PHOTOGRAPHS

See following Attached Pages for setup photographs.

FCC ID: A3LSMS918U	 element	HAC (RF EMISSIONS) TEST REPORT	Approved by: Managing Director
Filename: 1M2209010098-25-R1.A3L	Test Dates: 9/26/2022 - 11/3/2022	DUT Type: Portable Handset	Page 100 of 102

REV 4.3.M

3/29/2022

Unless otherwise specified, no part of this report may be reproduced or utilized in any part, form or by any means, electronic or mechanical, including photocopying and microfilm, without permission in writing from Element. If you have any questions about this or have an enquiry about obtaining additional rights to this report or assembly of contents thereof, please contact CT.INFO@ELEMENT.COM.

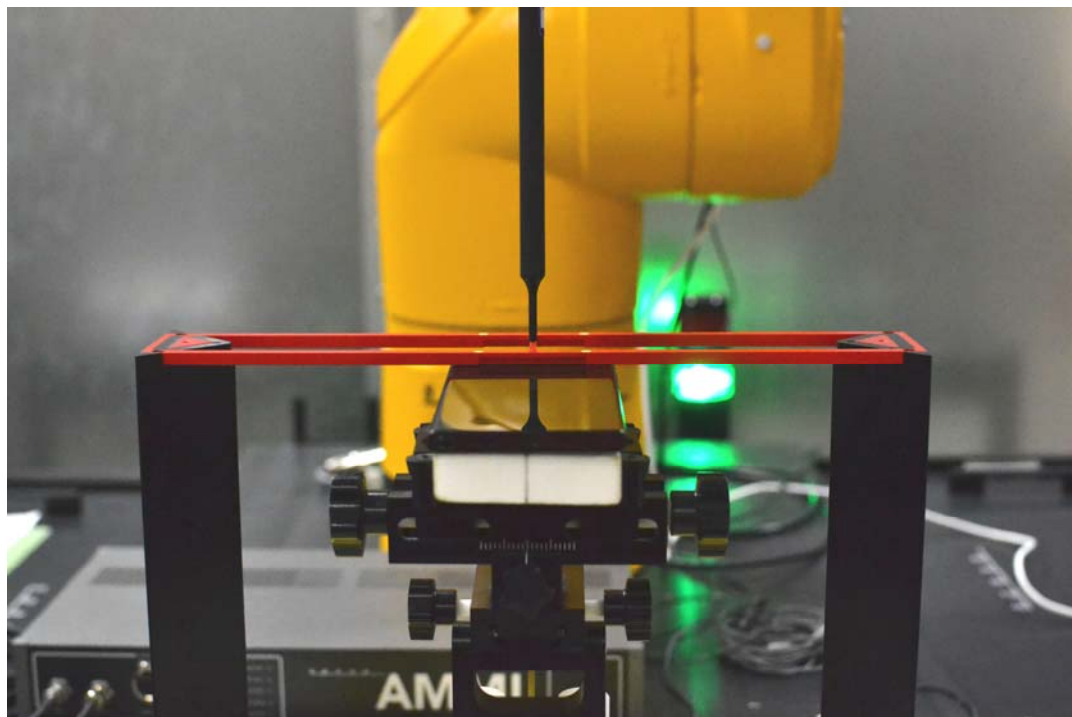


Figure 18-1
Ear Reference Point HAC Phantom Alignment

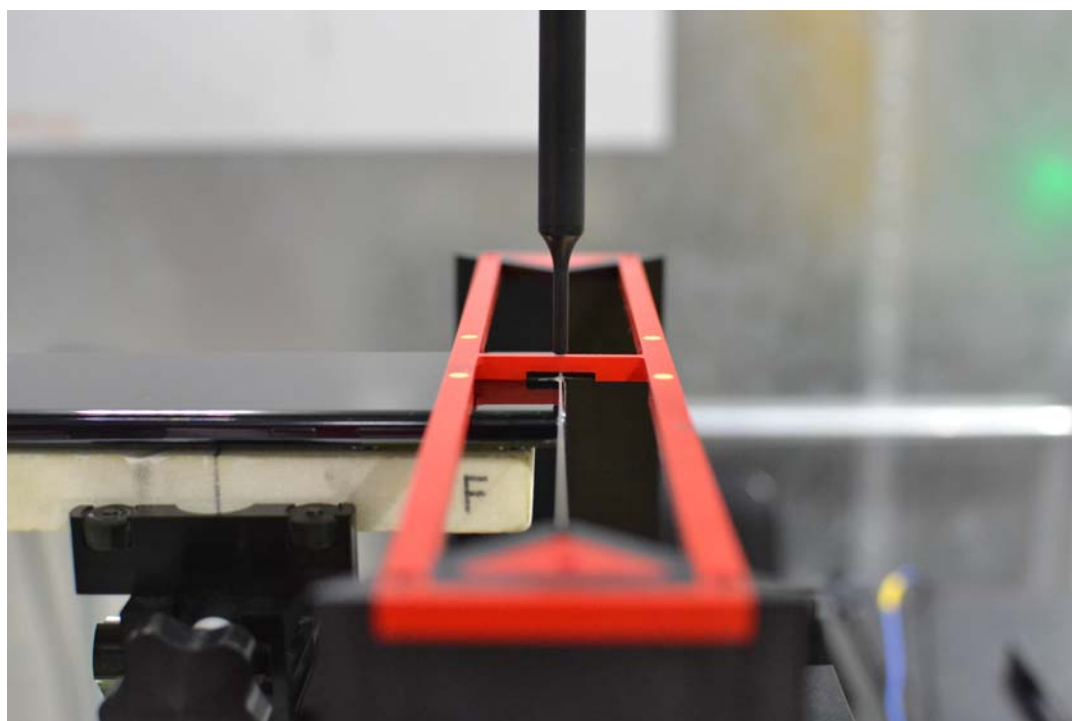



Figure 18-2
HAC Phantom Plane Alignment

FCC ID: A3LSMS918U	 element	HAC (RF EMISSIONS) TEST REPORT	Approved by: Managing Director
Filename: 1M2209010098-25-R1.A3L	Test Dates: 9/26/2022 - 11/3/2022	DUT Type: Portable Handset	Page 101 of 102

REV 4.3.M
3/29/2022

Unless otherwise specified, no part of this report may be reproduced or utilized in any part, form or by any means, electronic or mechanical, including photocopying and microfilm, without permission in writing from Element. If you have any questions about this or have an enquiry about obtaining additional rights to this report or assembly of contents thereof, please contact CT.INFO@ELEMENT.COM.

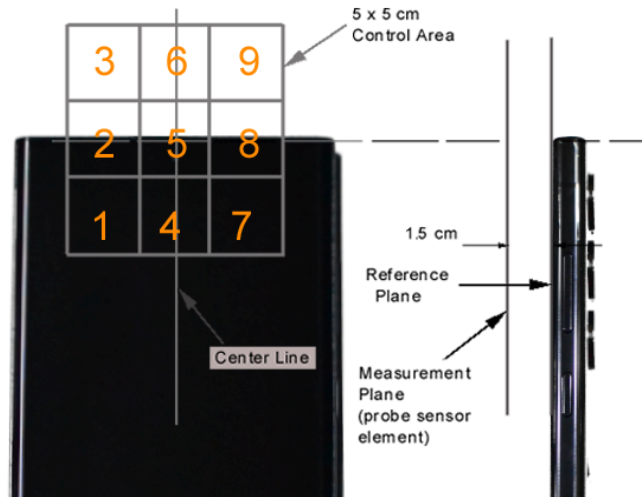


Figure 18-3 5x5 Scan grid above WD
(Acoustic Centered Scan Area pictured)

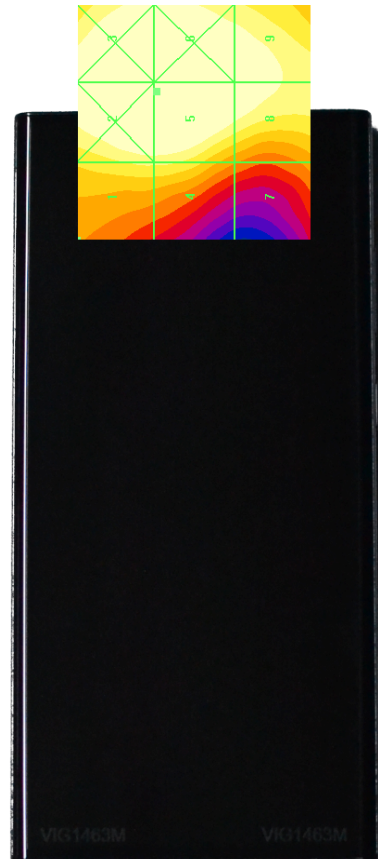



Figure 18-4 E-Field WD Scan overlay
(Acoustic Centered Scan Area pictured)

FCC ID: A3LSMS918U	 element	HAC (RF EMISSIONS) TEST REPORT		Approved by: Managing Director
Filename: 1M2209010098-25-R1.A3L	Test Dates: 9/26/2022 - 11/3/2022	DUT Type: Portable Handset	Page 102 of 102	

REV 4.3.M
3/29/2022

Unless otherwise specified, no part of this report may be reproduced or utilized in any part, form or by any means, electronic or mechanical, including photocopying and microfilm, without permission in writing from Element. If you have any questions about this or have an enquiry about obtaining additional rights to this report or assembly of contents thereof, please contact CT.INFO@ELEMENT.COM.