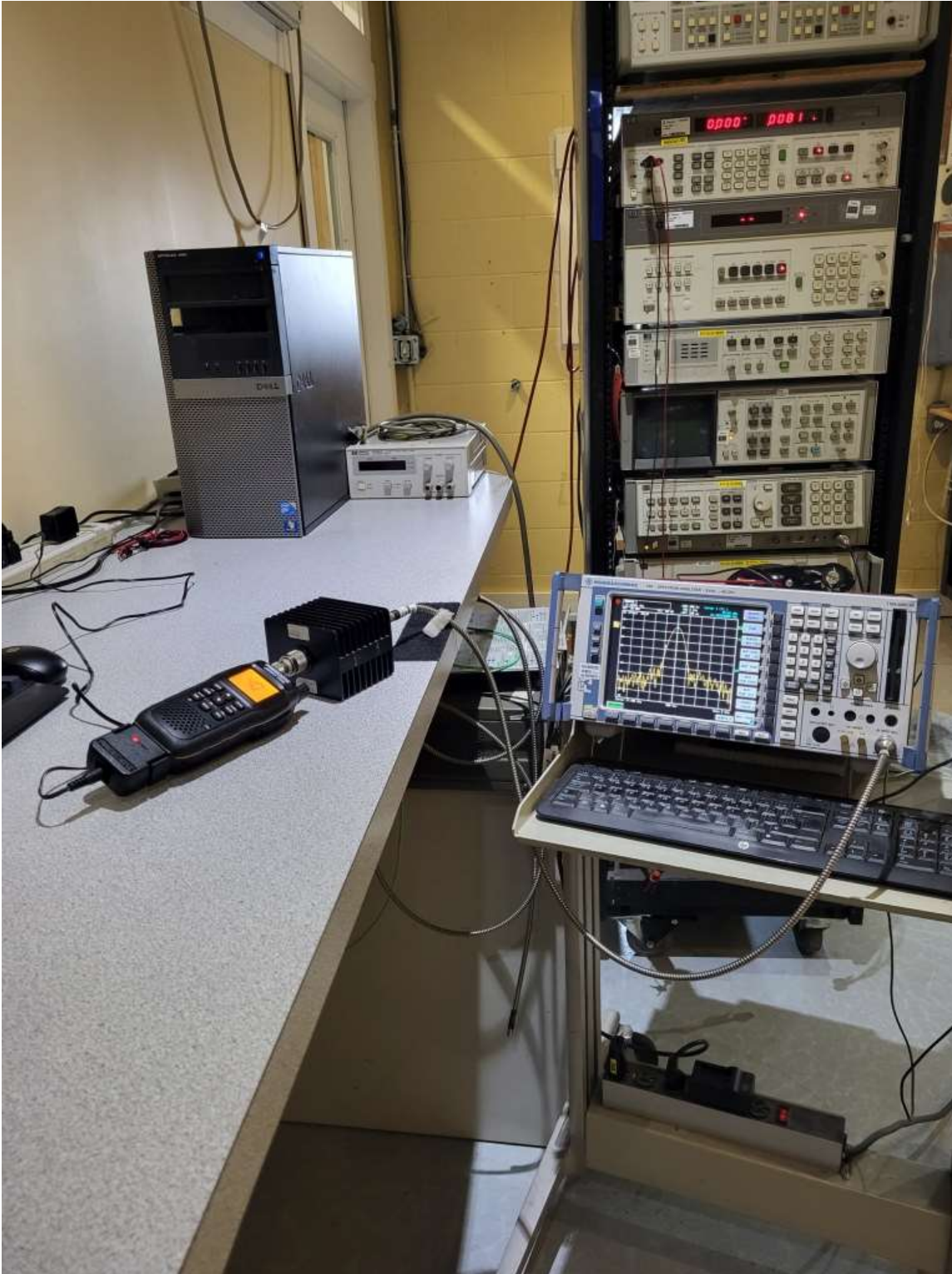
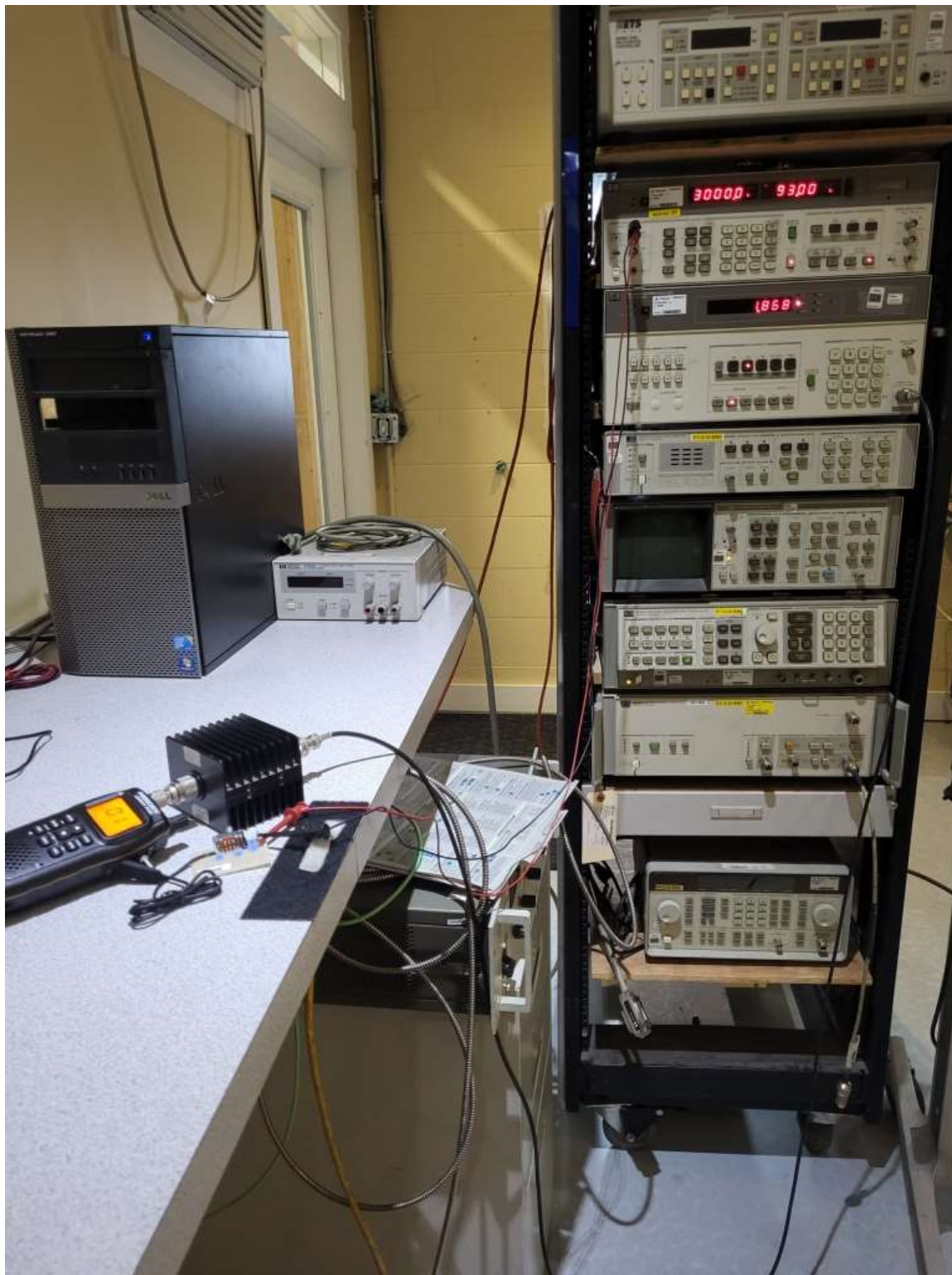


**EXHIBIT 18 – PHOTOS – EMC AND SAR SETUP**

**Figure E18.1 – Setup, Antenna Port Conducted**

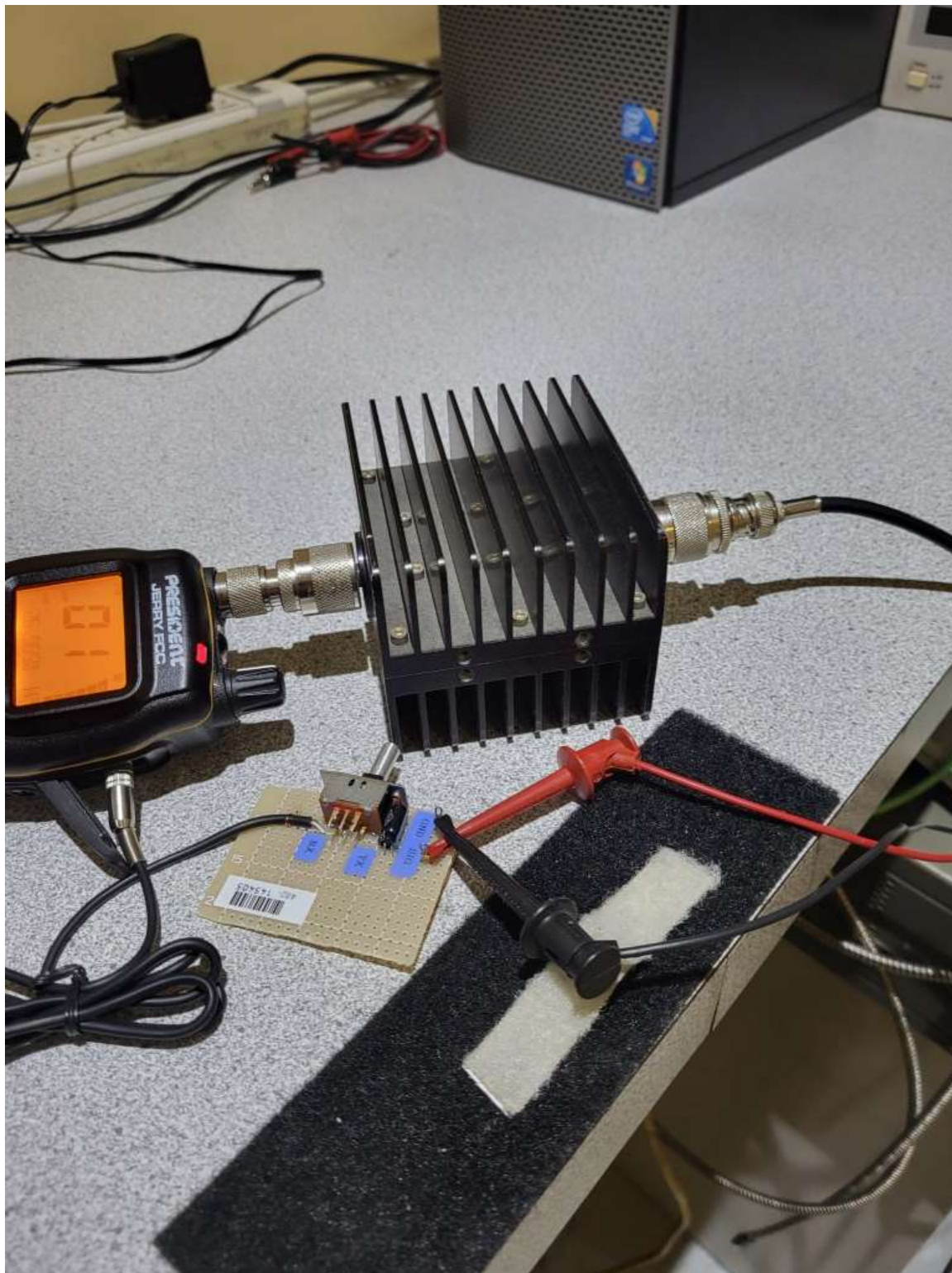


**Figure E18.2 – Setup, Modulation Characteristics**





**Figure E18.3 – Setup, Modulation Characteristics**



**Figure E18.4 – Setup, Radiated Emissions Below 30MHz**

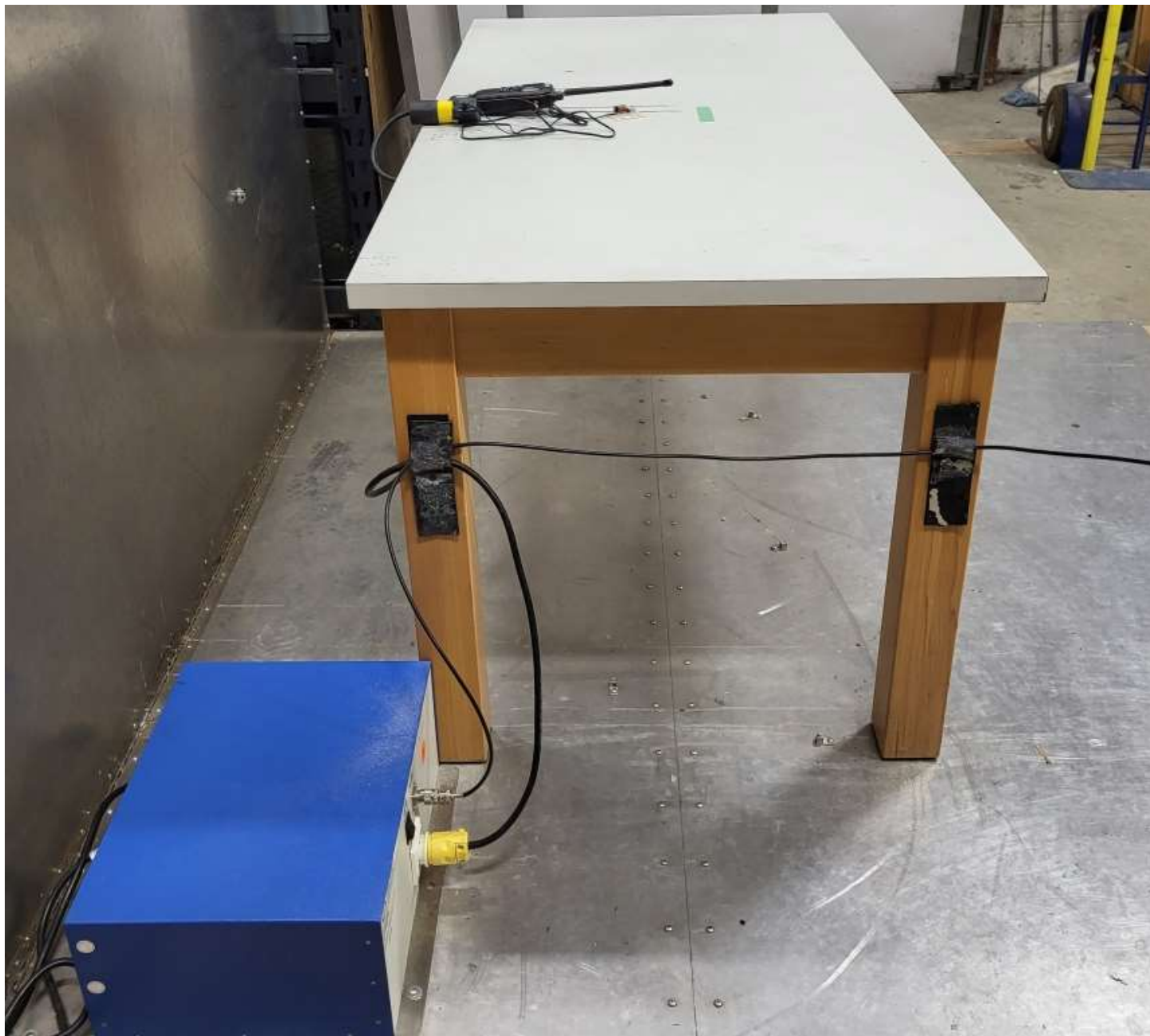




**Figure E18.5 – Setup, Radiated Emissions 30 - 1000MHz**



**Figure E18.6 – Setup, Line Conducted Emissions**

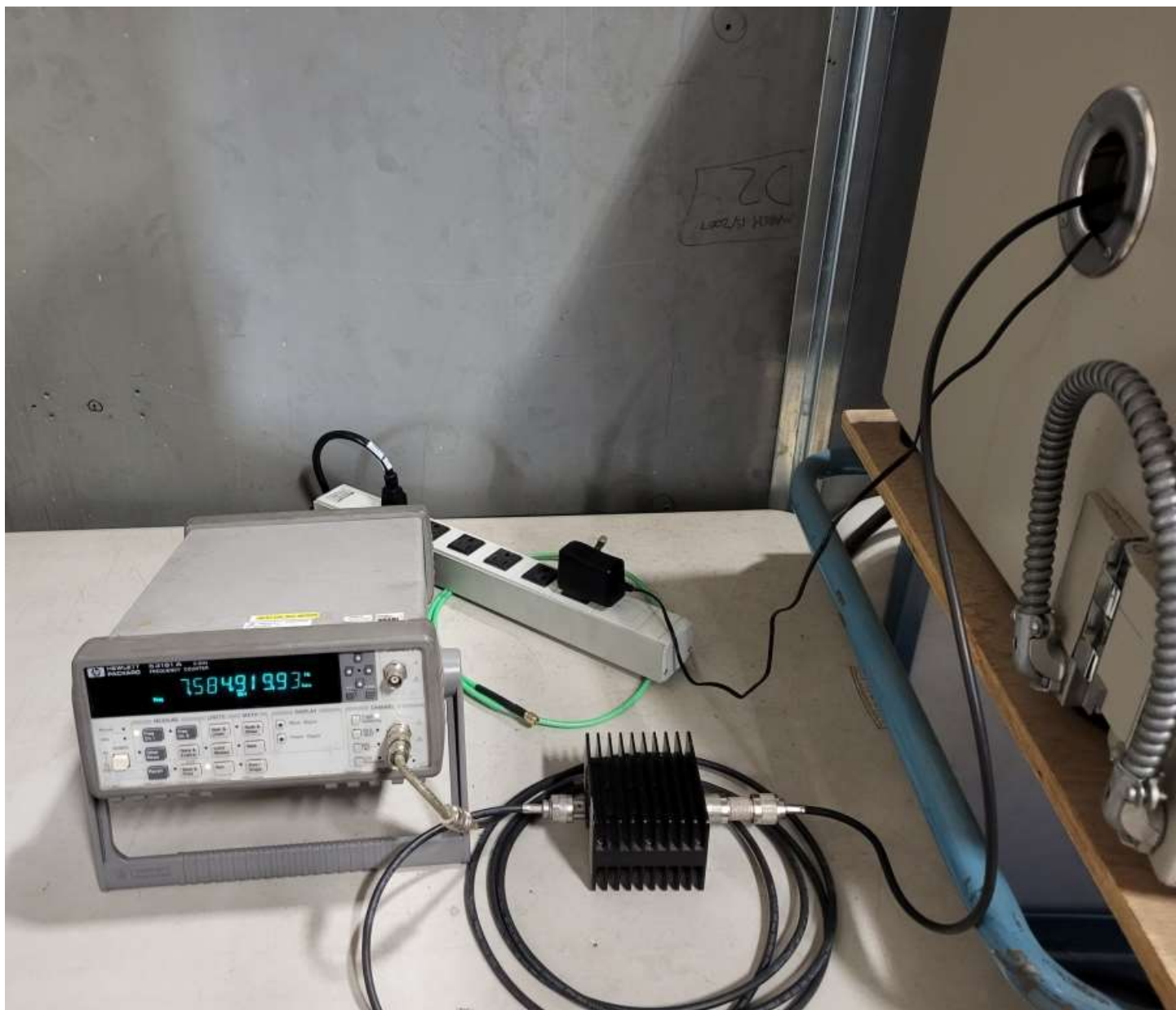




**Figure E18.7 – Setup, Frequency Stability**

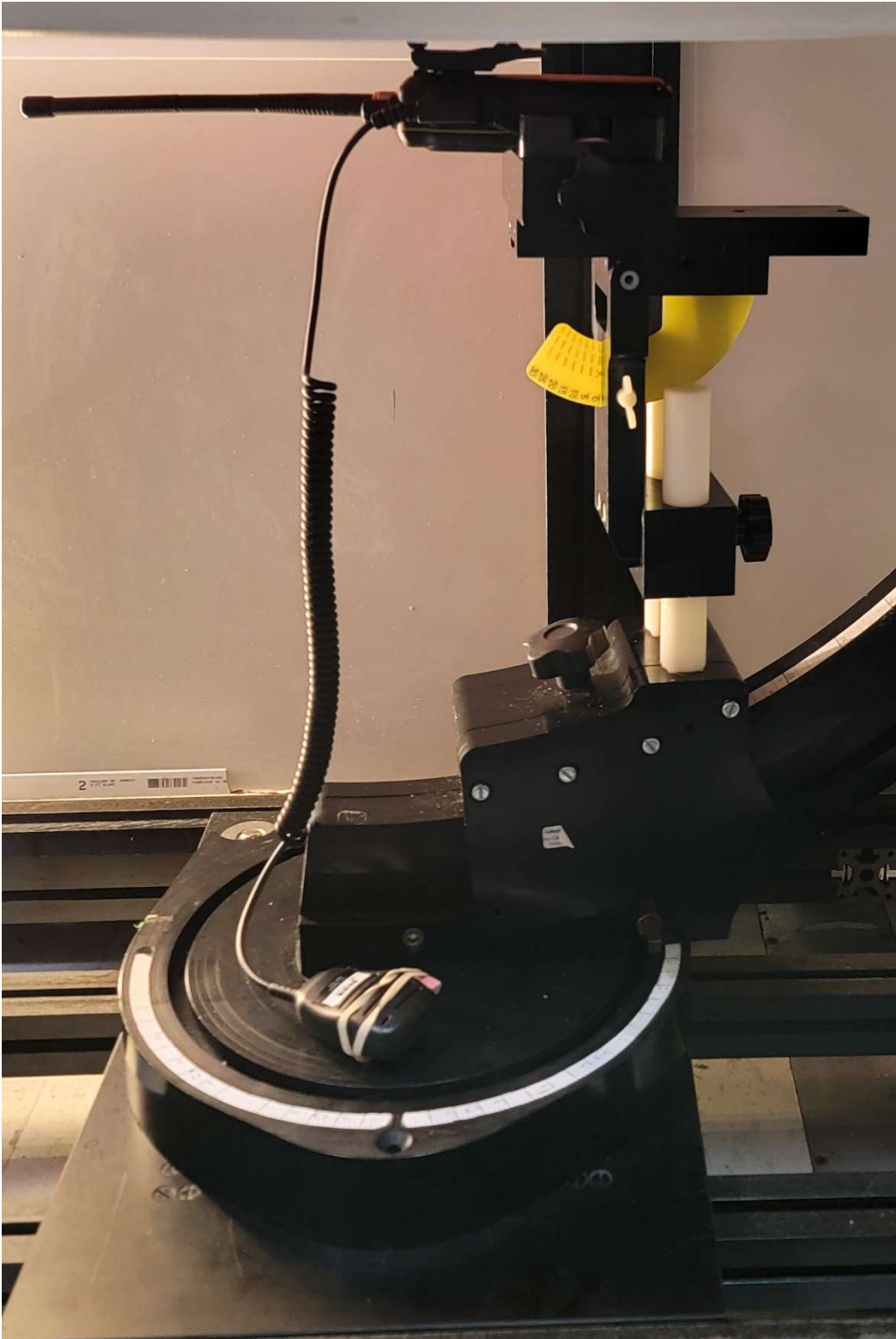


**Figure E18.8 – Setup, Frequency Stability**

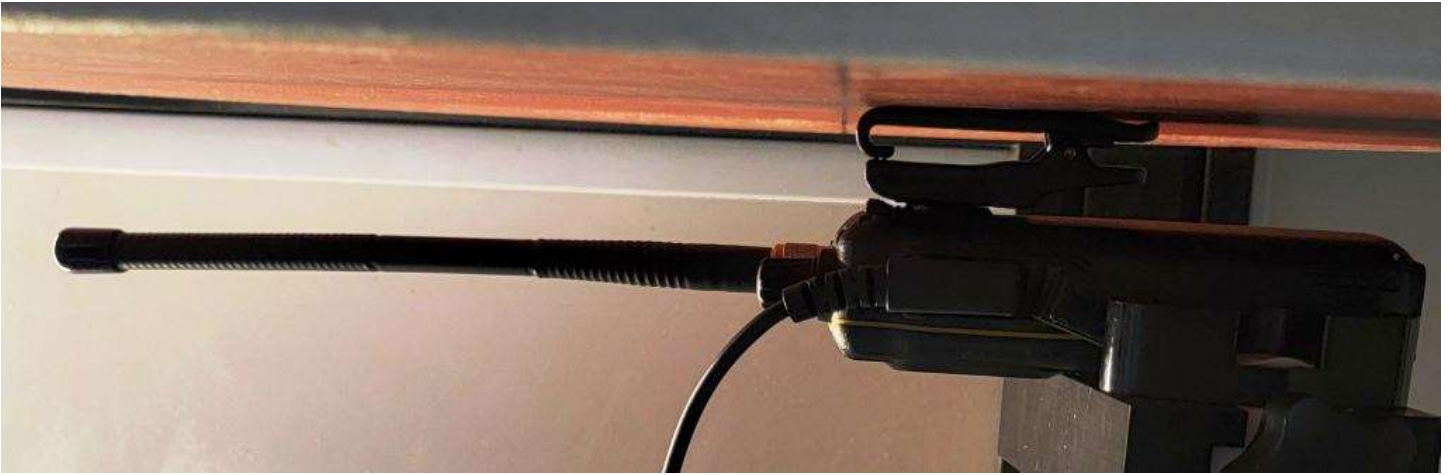




**Figure E18.10 – Setup, SAR B2**

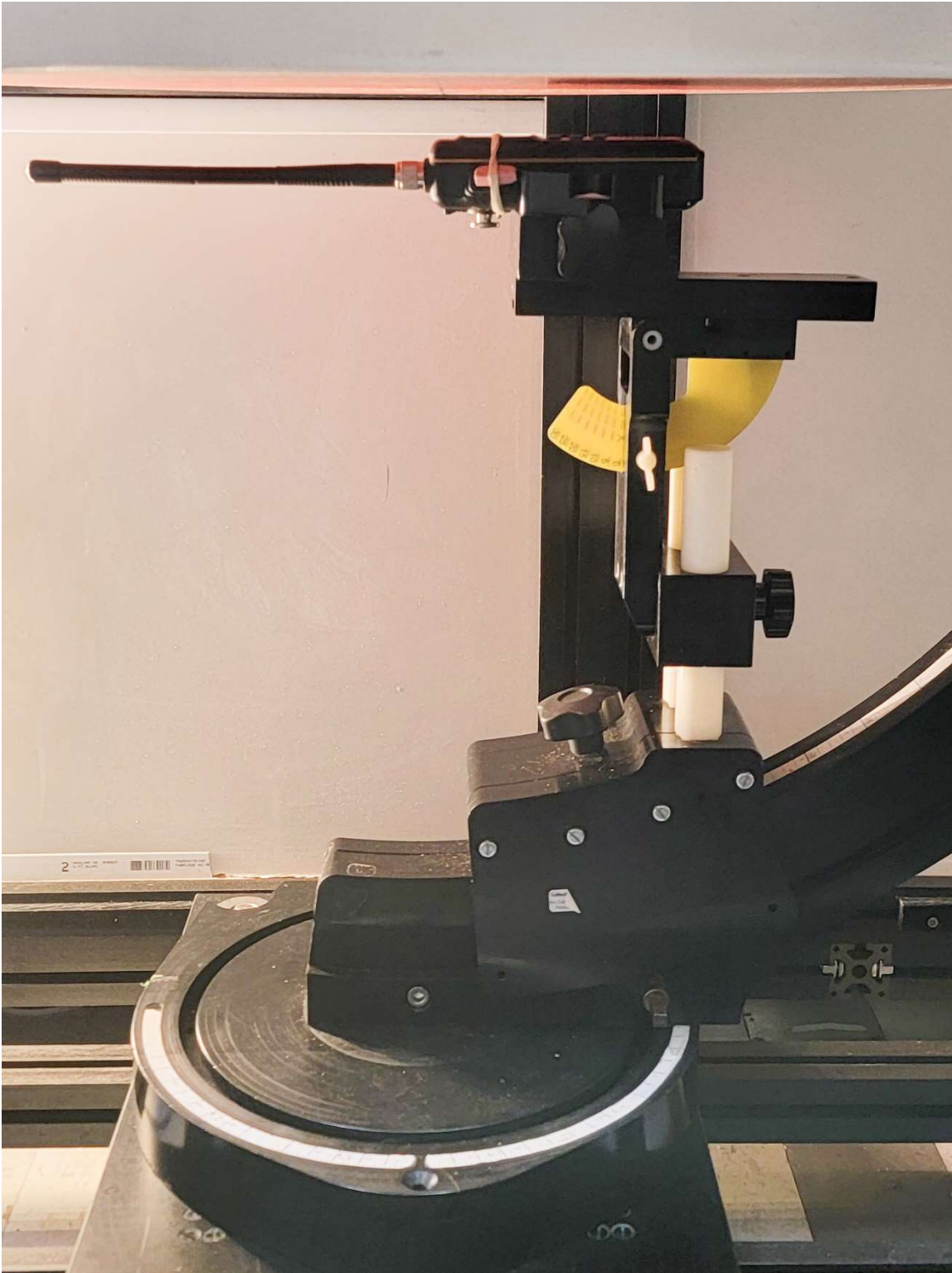


**Figure E18.11 – Setup, SAR B2**





**Figure E18.12 – Setup, SAR F1**



**Figure E18.13 – Setup, SAR F1**

