

# SAR TEST REPORT

**FCC ID: BBO9905**

**Product: Sports camera**

**Model No.: WASPcam 9905**

**Additional Model No.: N/A**

**Trade Mark:** 

**Report No.: TCT160612E010**

**Issued Date: July 04 , 2016**

Issued for:

**Cobra Electronics Corporation**

**6500 West Cortland Street Chicago, IL 60707 USA**

Issued By:

**Shenzhen Tongce Testing Lab.**

**1F, Leinuo Watch Building, Fuyong Town, Baoan Dist, Shenzhen, China**

**TEL: +86-755-27673339**

**FAX: +86-755-27673332**


**Note:** This report shall not be reproduced except in full, without the written approval of Shenzhen Tongce Testing Lab..

This document may be altered or revised by Shenzhen Tongce Testing Lab. personnel only, and shall be noted in the revision section of the document. The test results in the report only apply to the tested sample.

## TABLE OF CONTENTS

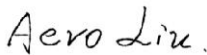
|       |  |    |
|-------|--|----|
| 1.    | Test Certification .....   | 3  |
| 2.    | Facilities and Accreditations .....                              | 4  |
| 2.1.  | FACILITIES.....  | 4  |
| 2.2.  | LOCATION .....   | 4  |
| 2.3.  | ENVIRONMENT CONDITION: .....                                     | 4  |
| 3.    | Test Result Summary .....  | 5  |
| 4.    | EUT Description .....  | 6  |
| 5.    | RF Exposure Limit .....  | 7  |
| 6.    | SAR Measurement System Configuration .....                       | 8  |
| 6.1.  | SAR MEASUREMENT SET-UP.....                                      | 8  |
| 6.2.  | E-FIELD PROBE .....  | 9  |
| 6.3.  | PHANTOM .....  | 9  |
| 6.4.  | DEVICE HOLDER.....   | 10 |
| 6.5.  | DATA STORAGE AND EVALUATION.....                                 | 11 |
| 6.6.  | POSITION OF THE WIRELESS DEVICE IN RELATION TO THE PHANTOM ..... | 12 |
| 6.7.  | TISSUE DIELECTRIC PARAMETERS .....                               | 15 |
| 6.8.  | TISSUE-EQUIVALENT LIQUID PROPERTIES .....                        | 15 |
| 6.9.  | SYSTEM CHECK.....  | 16 |
| 7.    | Measurement Procedure .....                                      | 17 |
| 8.    | Conducted Output Power.....                                      | 20 |
| 9.    | Exposure Position Consideration .....                            | 21 |
| 9.1.  | EUT ANTENNA LOCATION.....  | 21 |
| 9.2.  | TEST POSITION CONSIDERATION.....                                 | 21 |
| 10.   | SAR Test Results Summary.....                                    | 22 |
| 10.1. | BODY-WORN 1G SAR DATA.....                                       | 22 |
| 10.2. | MEASUREMENT UNCERTAINTY (450MHZ-3GHZ).....                       | 23 |
| 10.3. | TEST EQUIPMENT LIST .....  | 25 |
| 11.   | System Check Results .....                                       | 26 |
| 12.   | SAR Test Data .....  | 27 |
|       | Appendix A: EUT Photos.....                                      | 33 |
|       | Appendix B: Test Setup Photos .....                              | 35 |
|       | Appendix C: Probe Calibration Certificate .....                  | 36 |
|       | Appendix D: Dipole Calibration Report.....                       | 52 |

## 1. Test Certification

|                              |  |
|------------------------------|--|
| <b>Product:</b>              | Sports camera  |
| <b>Model No.:</b>            | WASPCam 9905   |
| <b>Additional Model No.</b>  | N/A  |
| <b>Trade Mark:</b>           |   |
| <b>Applicant:</b>            | Cobra Electronics Corporation  |
| <b>Address:</b>              | 6500 West Cortland Street Chicago, IL 60707 USA  |
| <b>Manufacturer:</b>         | Guangzhou Yaozhong Electronics Co., Ltd.   |
| <b>Address:</b>              | No.2, Shaxing Road, Shajiao, Lanhe, Nansha district, Guangzhou, China  |
| <b>Date of Test:</b>         | Jun.23 –July 04, 2016  |
| <b>SAR Max. Values:</b>      | <b>0.13 W/Kg (1g) for Body-worn;</b>   |
| <b>Applicable Standards:</b> | FCC 47 CFR § 2.1093<br>IEEE1528-2013:Recommended Practice for Determining the Peak Spatial-Average Specific Absorption Rate in the Human Head from Wireless Communications Devices:Measurement Techniques<br>KDB447498 D01:General RF Exposure Guidance v06<br>KDB865664 D01:SAR measurement 100MHz to 6GHz v01r04<br>KDB865664 D02:RF Exposure Reporting v01r02.<br>KDB941225 D01:SAR Procedures v03r01<br>KDB248227 D01: 802.11 wi-fi SAR v02r02<br>KDB690783 D01:SAR Listings on Grant v01r03 |

The above equipment has been tested by Shenzhen Tongce Testing Lab. and found compliance with the requirements set forth in the technical standards mentioned above. The results of testing in this report apply only to the product/system, which was tested. Other similar equipment will not necessarily produce the same results due to production tolerance and measurement uncertainties.

Tested By:



Aero Liu

Date:

July 04, 2016

Reviewed By:



Joe Zhou

Date:

July 04, 2016

Approved By:



Tomsin

Date:

July 04, 2016

## 2. Facilities and Accreditations

### 2.1. Facilities

The test facility is recognized, certified, or accredited by the following organizations:

- FCC - Registration No.: 572331

Shenzhen Tongce Testing Lab

The 3m Semi-anechoic chamber has been registered and fully described in a report with the (FCC) Federal Communications Commission. The acceptance letter from the FCC is maintained in our files.

- IC - Registration No.: 10668A-1

The 3m Semi-anechoic chamber of Shenzhen Tongce Testing Lab.. has been registered by Certification and Engineering Bureau of Industry Canada for radio equipment testing

- CNAS - Registration No.: CNAS L6165

Shenzhen Tongce Testing Lab.. is accredited to ISO/IEC 17025:2005 General Requirements for the Competence of Testing and Calibration laboratories for the competence of testing. The Registration No. is CNAS L6165.

### 2.2. Location

Shenzhen Tongce Testing Lab

Address: 1F, Leinuo Watch Building, Fuyong Town, Baoan Dist, Shenzhen, China

### 2.3. Environment Condition:

|                       |            |
|-----------------------|------------|
| Temperature:          | 18°C ~25°C |
| Humidity:             | 35%~75% RH |
| Atmospheric Pressure: | 1011 mbar  |

### 3. Test Result Summary


The maximum results of Specific Absorption Rate (SAR) found during test as bellows:  
<Highest Reported standalone SAR Summary>

| Exposure Position                  | Frequency Band     | Reported SAR (W/kg) | Equipment Class | Highest Reported SAR (W/kg) |
|------------------------------------|--------------------|---------------------|-----------------|-----------------------------|
| Body-worn<br>1-g SAR<br>(0 mm Gap) | WLAN2.4GHz<br>Band | 0.13                | DTS             | <b>0.13</b>                 |

**Note:**

1. The highest simultaneous transmission is scalar summation of Reported standalone SAR per FCC KDB 690783 D01 v01r02, and scalar SAR summation of all possible simultaneous transmission scenarios of next to mouth are <1.6W/kg.and and scalar SAR summation of all possible simultaneous transmission scenarios of extremity are < 4.0W/kg
2. This device is compliance with Specific Absorption Rate (SAR) for general population/uncontrolled exposure limits specified in FCC 47 CFR part 2 (2.1093) and ANSI/IEEE C95.1-2005, and had been tested in accordance with the measurement methods and procedures specified in IEEE 1528-2013.

#### 4. EUT Description

|                             |  |
|-----------------------------|--|
| <b>Product Name:</b>        | Sports camera  |
| <b>Model :</b>              | WASPCam 9905   |
| <b>Additional Model:</b>    | N/A  |
| <b>Trade Mark:</b>          |   |
| <b>Power Supply:</b>        | DC 3.7V from Rechargeable Li-ion Battery<br>Battery capacity: 1050 mAh             |
| <b>WiFi</b>                 |  |
| <b>Supported type:</b>      | 802.11b/802.11g/802.11n  |
| <b>Modulation:</b>          | 802.11b: DSSS<br>802.11g/802.11n: OFDM   |
| <b>Operation frequency:</b> | 802.11b/802.11g/802.11n(HT20): 2412MHz~2462MHz;<br>802.11n(HT40): 2422MHz~2452MHz; |
| <b>Channel number:</b>      | 802.11b/802.11g/802.11n(HT20): 11;<br>802.11n(HT40): 7                             |
| <b>Channel separation:</b>  | 5MHz   |

## 5. RF Exposure Limit

| Type Exposure  | SAR (W/kg)                  |
|--|-----------------------------|
|  | Uncontrolled Exposure Limit |
| Spatial Peak SAR (averaged over any 1 g of tissue)   | 1.60                        |
| Spatial Peak SAR (hands/wrists/feet/ankles averaged over 10g)  | 4.00                        |
| Spatial Peak SAR (averaged over the whole body)  | 0.08                        |
| <b>Note:</b> <ol style="list-style-type: none"><li>1. The Spatial Peak value of the SAR averaged over any 1 gram of tissue (defined as a tissue volume in the shape of a cube) and over the appropriate averaging time.</li><li>2. The Spatial Average value of the SAR averaged over the whole body.</li><li>3. The Spatial Peak value of the SAR averaged over any 10 grams of tissue (defined as a tissue volume in the shape of a cube) and over the appropriate averaging time.</li></ol> |                             |

## 6. SAR Measurement System Configuration

### 6.1. SAR Measurement Set-up

The OPENSAR system for performing compliance tests consist of the following items:

A standard high precision 6-axis robot (KUKA) with controller and software.

KUKA Control Panel (KCP)

A dosimetric probe, i.e., an isotropic E-field probe optimized and calibrated for usage in tissue simulating liquid. The probe is equipped with a Video Positioning System (VPS).

The stress sensor is composed with mechanical and electronic when the electronic part detects a change on the electro-mechanical switch; it sends an "Emergency signal" to the robot controller that to stop robot's moves A computer operating Windows XP.

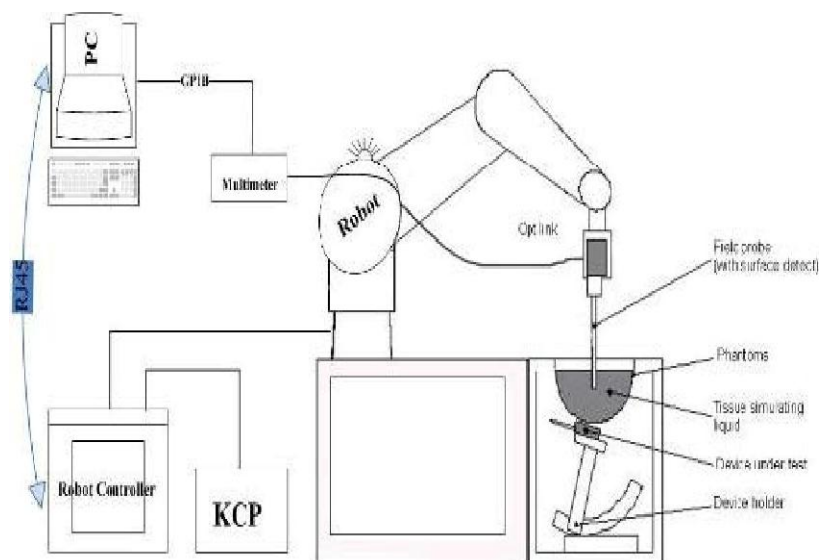
OPENSAR software Remote control with teaches pendant and additional circuitry for robot safety such as warning lamps, etc.

The SAM phantom enabling testing left-hand right-hand and body usage.

The Position device for handheld EUT

Tissue simulating liquid mixed according to the given recipes.

System validation dipoles to validate the proper functioning of the system.



**KUKA SAR Test System Configuration**



## 6.2. E-field Probe

The SAR measurement is conducted with the dosimetric probe (manufactured by MVG). The probe is specially designed and calibrated for use in liquid with high permittivity. The dosimetric probe has special calibration in liquid at different frequency. This probe has a built in optical surface detection system to prevent from collision with phantom.

### Probe Specification

Construction Symmetrical design with triangular core  
Interleaved sensors  
Built-in shielding against static charges  
PEEK enclosure material (resistant to organic solvents, e.g., DGBE)  
Calibration ISO/IEC 17025 calibration service available.

|  |   |
|--|---|
| Device Type                              | COMOSAR DOSIMETRIC E FIELD PROBE  |
| Manufacturer                             | MVG   |
| Model                                    | SSE5  |
| Serial Number                            | SN 07/15 EP248  |
| Frequency Range of Probe                 | 0.45 GHz-3GHz   |
| Resistance of Three Dipoles at Connector | Dipole 1:R1=0.180M $\Omega$<br>Dipole 2:R3=0.191M $\Omega$<br>Dipole 3:R3=0.179M $\Omega$ |



Photo of E-Field Probe

## 6.3. Phantom

The SAM Phantom SAM120 is constructed of a fiberglass shell integrated in a wooden table. The shape of the shell is in compliance with the specification set in IEEE P1528 and CENELEC IEC 62209-1, IEC 62209-2:2010.

The phantom enables the dosimetric evaluation of left and right hand phone usage as well as body mounted usage at the flat phantom region.

A cover prevents the evaporation of the liquid.

Reference markings on the Phantom allow the complete setup of all predefined phantom positions and measurement grids by manually teaching three points in the robot

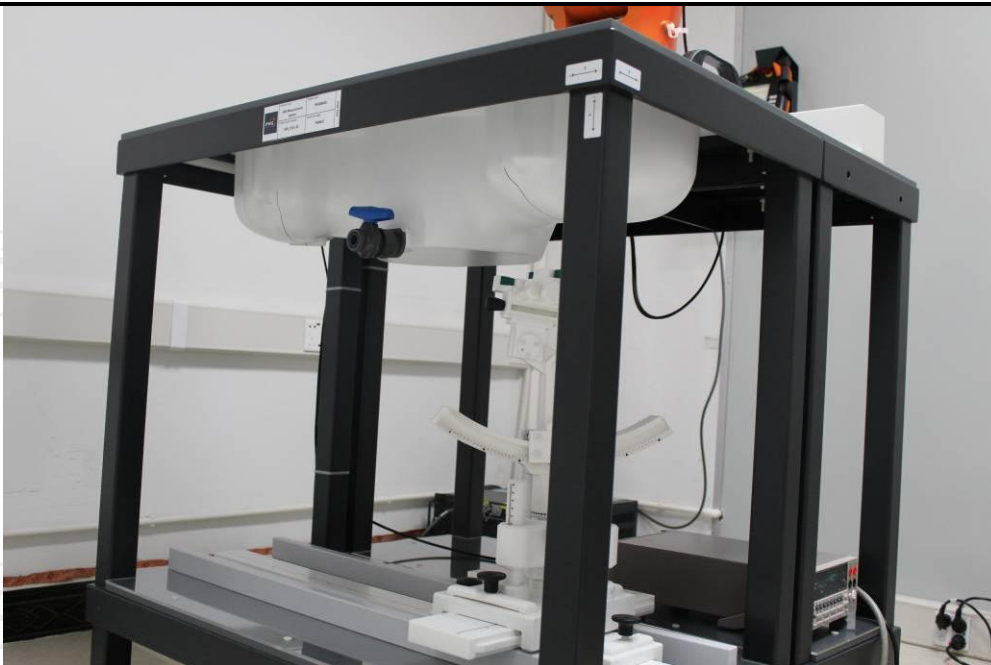
System checking was performed using the flat section, whilst Head SAR tests used the left and right head profile sections.

Body SAR testing also used the flat section between the head profiles.

Name: COMOSAR IEEE SAM PHANTOM

S/N: SN 19/15 SAM 120

Manufacture: MVG

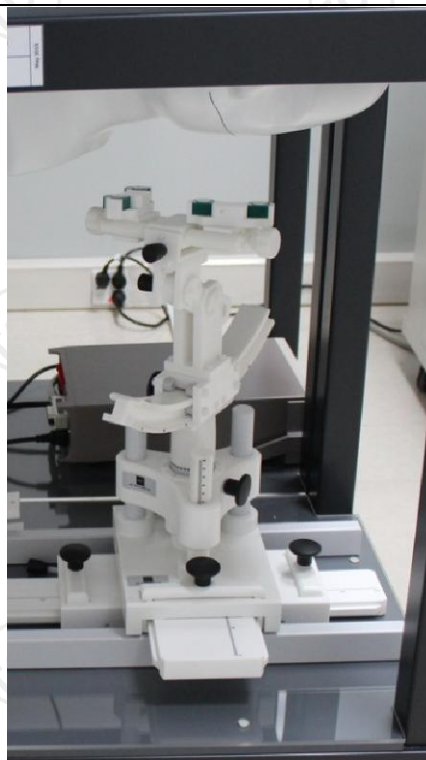


SAM Twin Phantom

#### 6.4. Device Holder

In combination with the Generic Twin Phantom SAM120, the Mounting Device enables the rotation of the mounted transmitter in spherical coordinates whereby the rotation points is the ear opening. The devices can be easily, accurately, and repeatedly positioned according to the FCC and CENELEC specifications.

The device holder can be locked at different phantom locations (left head, right head, flat phantom).

COMOSAR Mobile  
phone positioning  
system

## 6.5. Data Storage and Evaluation

### Data Storage

The OPENSAR software stores the acquired data from the data acquisition electronics as raw data (in microvolt readings from the probe sensors), together with all necessary software parameters for the data evaluation (probe calibration data, liquid parameters and device frequency and modulation data) in measurement files. The software evaluates the desired unit and format for output each time the data is visualized or exported. This allows verification of the complete software setup even after the measurement and allows correction of incorrect parameter settings. For example, if a measurement has been performed with a wrong crest factor parameter in the device setup, the parameter can be corrected afterwards and the data can be re-evaluated.

The measured data can be visualized or exported in different units or formats, depending on the selected probe type ([V/m], [A/m], [°C], [mW/g], [mW/cm²], [dBre], etc.). Some of these units are not available in certain situations or show meaningless results, e.g., a SAR output in a lossless media will always be zero. Raw data can also be exported to perform the evaluation with other software packages.

### Data Evaluation

The OPENSAR software automatically executes the following procedures to calculate the field units from the microvolt readings at the probe connector. The parameters used in the evaluation are stored in the configuration modules of the software:

|                    |                           |                      |
|--------------------|---------------------------|----------------------|
| Probe parameters:  | - Sensitivity             | Normi, ai0, ai1, ai2 |
|                    | - Conversion factor       | ConvFi               |
|                    | - Diode compression point | Dcpi                 |
| Device parameters: | - Frequency               | f                    |
|                    | - Crest factor            | cf                   |
| Media parameters:  | - Conductivity            | $\sigma$             |
|                    | - Density                 | $\rho$               |

These parameters must be set correctly in the software. They can be found in the component documents or they can be imported into the software from the configuration files issued for the OPENSAR components. In the direct measuring mode of the millimetre option, the parameters of the actual system setup are used. In the scan visualization and export modes, the parameters stored in the corresponding document files are used.

The first step of the evaluation is a linearization of the filtered input signal to account for the compression characteristics of the detector diode. The compensation depends on the input signal, the diode type and the DC-transmission factor from the diode to the evaluation electronics. If the exciting field is pulsed, the crest factor of the signal must be known to correctly compensate for peak power. The formula for each channel can be given as:

$$V_i = U_i + U_i^2 \cdot c f / d c p_i$$

|      |       |                                   |                 |
|------|-------|-----------------------------------|-----------------|
| With | $V_i$ | = compensated signal of channel i | (i = x, y, z)   |
|      | $U_i$ | = input signal of channel i       | (i = x, y, z)   |
|      | cf    | = crest factor of exciting field  | (MVG parameter) |
|      | dcpi  | = diode compression point         | (MVG parameter) |

From the compensated input signals the primary field data for each channel can be evaluated:

$$\text{E-field probes: } E_i = (V_i / \text{Normi} \cdot \text{ConvF})^{1/2}$$

$$\text{H-field probes: } H_i = (V_i)^{1/2} \cdot (ai0 + ai1 f + ai2 f^2) / f$$

|      |       |   |               |
|------|-------|---|---------------|
| With | $V_i$ | = compensated signal of channel i               | (i = x, y, z) |
|      | Normi | = sensor sensitivity of channel i               | (i = x, y, z) |
|      |       | [mV/(V/m)²] for E-field Probes                  |               |
|      | ConvF | = sensitivity enhancement in solution           |               |
|      | aij   | = sensor sensitivity factors for H-field probes |               |
|      | f     | = carrier frequency [GHz]                       |               |
|      | $E_i$ | = electric field strength of channel i in V/m   |               |
|      | $H_i$ | = magnetic field strength of channel i in A/m   |               |

The RSS value of the field components gives the total field strength (Hermitian magnitude):

$$E_{tot} = (E_x^2 + E_y^2 + E_z^2)^{1/2}$$

The primary field data are used to calculate the derived field units.

$$SAR = (E_{tot})^2 \cdot \sigma / (\rho \cdot 1000)$$

with SAR = local specific absorption rate in mW/g  
 $E_{tot}$  = total field strength in V/m  
 $\sigma$  = conductivity in [mho/m] or [Siemens/m]  
 $\rho$  = equivalent tissue density in g/cm<sup>3</sup>

Note that the density is normally set to 1 (or 1.06), to account for actual brain density rather than the density of the simulation liquid. The power flow density is calculated assuming the excitation field to be a free space field.

## 6.6. Position of the wireless device in relation to the phantom

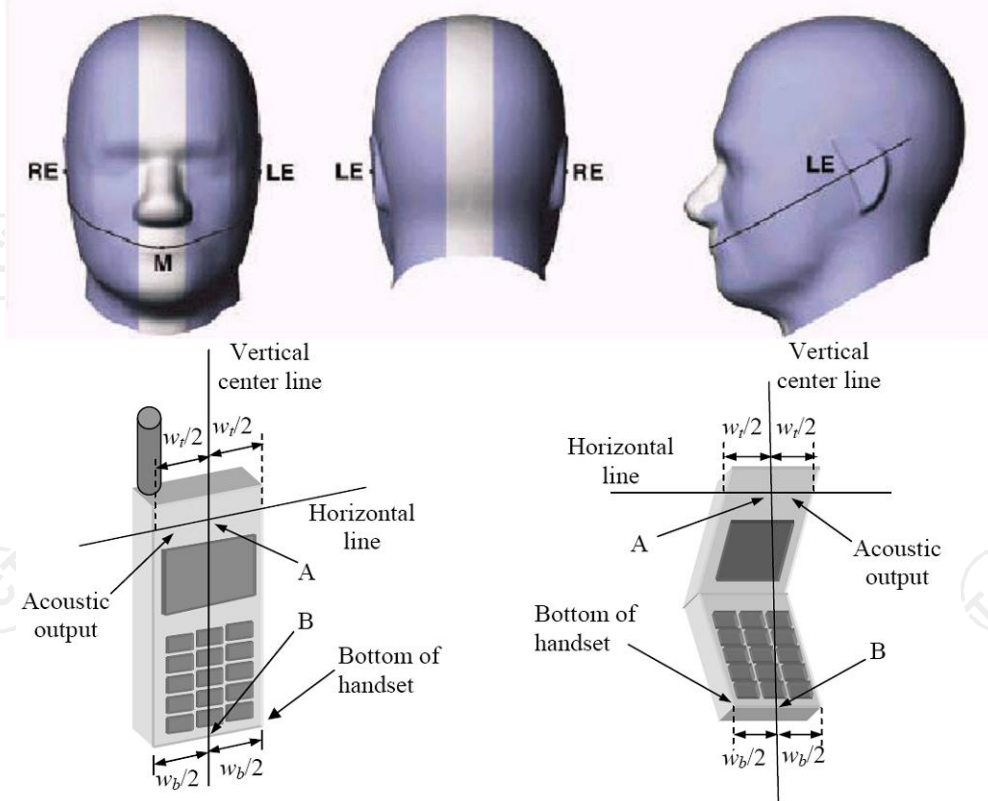
### Handset Reference Points

$$P_{pwe} = E_{tot}^2 / 3770 \text{ or } P_{pwe} = H_{tot}^2 \cdot 37.7$$

With  $P_{pwe}$  = equivalent power density of a plane wave in mW/cm<sup>2</sup>

$E_{tot}$  = total electric field strength in V/m

$H_{tot}$  = total magnetic field strength in A/m



Wt Width of the handset at the level of the acoustic

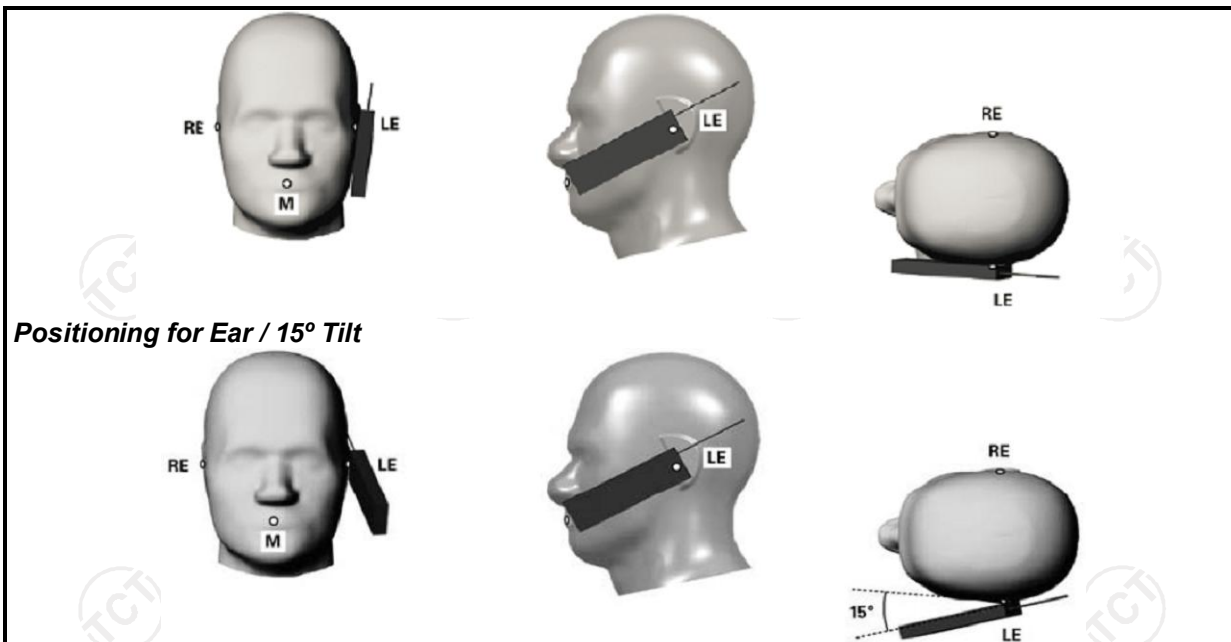
Wb Width of the bottom of the handset

A Midpoint of the width  $w_t$  of the handset at the level of the acoustic output

B Midpoint of the width  $w_b$  of the bottom of the handset

### Positioning for Cheek / Touch





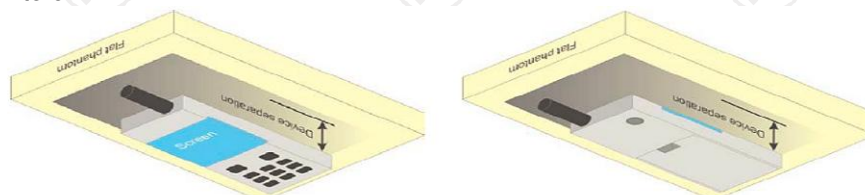
**Positioning for Ear / 15° Tilt**

#### Body Worn Accessory Configurations

To position the device parallel to the phantom surface with either keypad up or down.

To adjust the device parallel to the flat phantom.

To adjust the distance between the device surface and the flat phantom to 15mm or holster surface and the flat phantom to 0 mm.



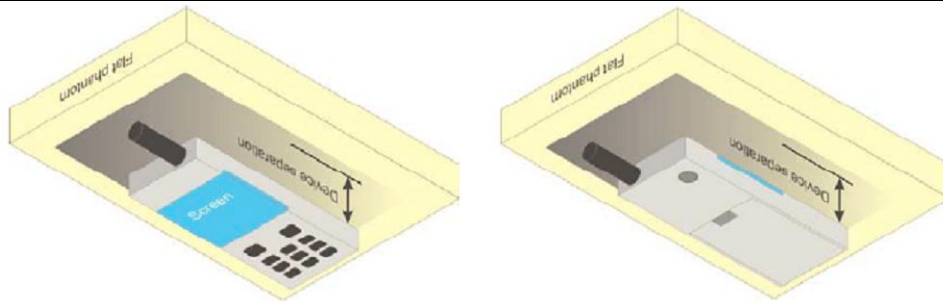
**Illustration for Body Worn Position**

#### Wireless Router (Hotspot) Configurations

Some battery-operated handsets have the capability to transmit and receive internet connectivity through simultaneous transmission of WIFI in conjunction with a separate licensed transmitter. The FCC has provided guidance in KDB Publication 941225 D06 where SAR test considerations for handsets (L x W ≥

9 cm x 5 cm) are based on a composite test separation distance of 10 mm from the front, back and edges of the device with antennas 2.5 cm or closer to the edge of the device, determined from general mixed use conditions for this type of devices. Since the hotspot SAR results may overlap with the body-worn accessory SAR requirements, the more conservative configurations can be considered, thus excluding some body-worn accessory SAR tests.

When the user enables the personal wireless router functions for the handset, actual operations include simultaneous transmission of both the WIFI transmitter and another licensed transmitter. Both transmitters often do not transmit at the same transmitting frequency and thus cannot be evaluated for SAR under actual use conditions. Therefore, SAR must be evaluated for each frequency transmission and mode separately and summed with the WIFI transmitter according to KDB 648474 publication procedures. The "Portable Hotspot" feature on the handset was NOT activated, to ensure the SAR measurements were evaluated for a single transmission frequency RF signal.

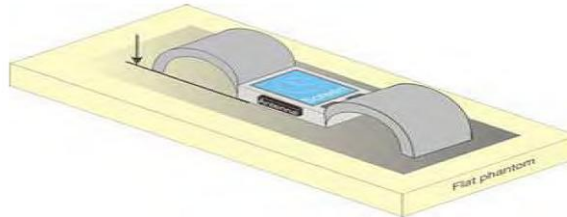


**Illustration for Hotspot Position**

### **Limb-worn device**

A limb-worn device is a unit whose intended use includes being strapped to the arm or leg of the user while transmitting (except in idle mode). It is similar to a body-worn device. Therefore, the test positions of 6.1.4.4 also apply. The strap shall be opened so that it is divided into two parts as shown in Figure 9. The device shall be positioned directly against the phantom surface with the strap straightened as much as possible and the back of the device towards the phantom.

If the strap cannot normally be opened to allow placing in direct contact with the phantom surface, it may be necessary to break the strap of the device but ensuring to not damage the antenna.



**Test position for limb-worn devices**

## 6.7. Tissue Dielectric Parameters

The liquid used for the frequency range of 100MHz-6G consisted of water, sugar, salt and Cellulose. The liquid has been previously proven to be suited for worst-case. The following Table shows the detail solution. It's satisfying the latest tissue dielectric parameters requirements proposed by the IEEE 1528 and IEC 62209.

The simulating liquids should be checked at the beginning of a series of SAR measurements to determine if the determined dielectric parameters are within the tolerances of the specified target values. The measured conductivity and relative permittivity should be within  $\pm 5\%$  of the target values.

The following materials are used for producing the tissue-equivalent materials

Targets for tissue simulating liquid

| Frequency (MHz) | Liquid Type | Liquid Type ( $\sigma$ ) | $\pm 5\%$ Range | Permittivity ( $\epsilon$ ) | $\pm 5\%$ Range |
|-----------------|-------------|--------------------------|-----------------|-----------------------------|-----------------|
| 300             | Head        | 0.87                     | 0.83~0.91       | 45.3                        | 43.04~47.57     |
| 450             | Head        | 0.87                     | 0.83~0.91       | 43.5                        | 41.33~45.68     |
| 835             | Head        | 0.90                     | 0.86~0.95       | 41.5                        | 39.43~43.58     |
| 900             | Head        | 0.97                     | 0.92~1.02       | 41.5                        | 39.43~43.58     |
| 1800-2000       | Head        | 1.40                     | 1.33~1.47       | 40.0                        | 38.00~42.00     |
| 2450            | Head        | 1.80                     | 1.71~1.89       | 39.2                        | 37.24~41.16     |
| 3000            | Head        | 2.40                     | 2.28~2.52       | 38.5                        | 36.58~40.43     |
| 5800            | Head        | 5.27                     | 5.01~5.53       | 35.3                        | 33.54~37.07     |
| 300             | Body        | 0.92                     | 0.87~0.97       | 58.2                        | 55.29~61.11     |
| 450             | Body        | 0.94                     | 0.89~0.99       | 56.7                        | 53.87~59.54     |
| 835             | Body        | 0.97                     | 0.92~1.02       | 55.2                        | 52.44~57.96     |
| 900             | Body        | 1.05                     | 1.00~1.10       | 55.0                        | 52.25~57.75     |
| 1800-2000       | Body        | 1.52                     | 1.44~1.60       | 53.3                        | 50.64~55.97     |
| 2450            | Body        | 1.95                     | 1.85~2.05       | 52.7                        | 50.07~55.34     |
| 3000            | Body        | 2.73                     | 2.60~2.87       | 52.0                        | 49.40~54.60     |
| 5800            | Body        | 6.00                     | 5.70~6.30       | 48.2                        | 45.79~50.61     |

( $\epsilon_r$  = relative permittivity,  $\sigma$  = conductivity and  $\rho = 1000 \text{ kg/m}^3$ )

## 6.8. Tissue-equivalent Liquid Properties

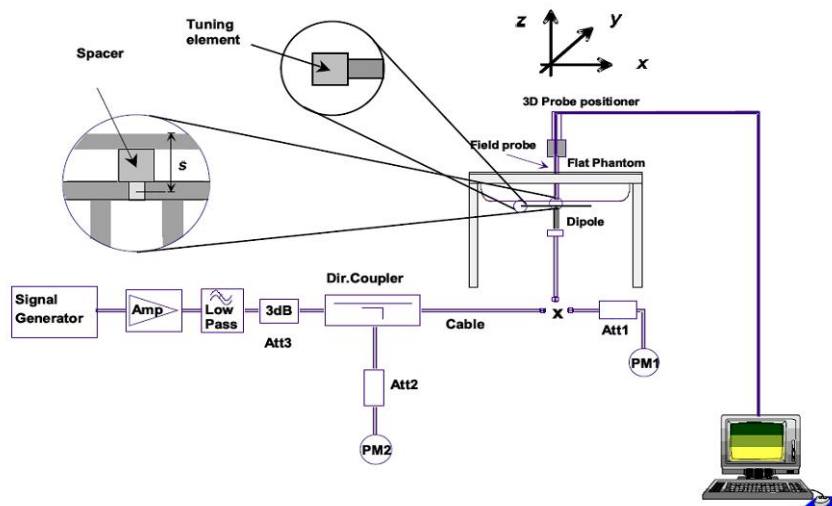
| Test Date<br>dd/mm/yy | Temp<br>°C | Tissue<br>Type | Measured<br>Frequency<br>( MHz ) | $\epsilon_r$ | $\sigma(\text{s/m})$ | Dev<br>$\epsilon_r(\%)$ | Dev<br>$\sigma(\%)$ |
|-----------------------|------------|----------------|----------------------------------|--------------|----------------------|-------------------------|---------------------|
| 24/06/2016            | 22°C       | 2450B          | 2410                             | 54.65        | 1.97                 | 3.70                    | 1.03                |
|                       |            |                | 2435                             | 54.63        | 1.98                 | 3.66                    | 1.54                |
|                       |            |                | 2450                             | 54.62        | 2.01                 | 3.64                    | 3.08                |
|                       |            |                | 2460                             | 54.59        | 2.03                 | 3.59                    | 4.10                |

## 6.9. System Check

The SAR system must be validated against its performance specifications before it is deployed. When SAR probe and system component or software are changed, upgraded or recalibrated, these must be validated with the SAR system(s) that operates with such component. Reference dipoles are used with the required tissue-equivalent media for system validation.

System check results have to be equal or near the values determined during dipole calibration with the relevant liquids and test system ( $\pm 10\%$ ).

System check is performed regularly on all frequency bands where tests are performed with the OPENSAR system.



System Check Set-up

### Verification Results

| Frequency (MHz) | Liquid Type | Measured Value in 100mW (W/kg) |              | Normalized to 1W (W/kg) |              | Target Value (W/kg) |              | Deviation (%) |              |
|-----------------|-------------|--------------------------------|--------------|-------------------------|--------------|---------------------|--------------|---------------|--------------|
|                 |             | 1 g Average                    | 10 g Average | 1 g Average             | 10 g Average | 1 g Average         | 10 g Average | 1 g Average   | 10 g Average |
| 2400            | Body        | 5.07                           | 2.42         | 50.70                   | 24.16        | 50.72               | 23.43        | -0.04         | 3.12         |

Comparing to the original SAR value provided by MVG, the verification data should be within its specification of 10%. Below table shows the target SAR and measured SAR after normalized to 1W input power. The table as below indicates the system performance check can meet the variation criterion and the plots can be referred to Section 10 of this report.



## 7. Measurement Procedure

### Conducted power measurement

For WWAN power measurement, use base station simulator to configure EUT WWAN transition in conducted connection with RF cable, at maximum power in each supported wireless interface and frequency band.

Read the WWAN RF power level from the base station simulator.

For WLAN/BT power measurement, use engineering software to configure EUT WLAN/BT continuously transmission, at maximum RF power in each supported wireless interface and frequency band.

Connect EUT RF port through RF cable to the power meter or spectrum analyzer, and measure WLAN/BT output power.

### Conducted power measurement

Use base station simulator to configure EUT WWAN transmission in radiated connection, and engineering software to configure EUT WLAN/BT continuously transmission, at maximum RF power, in the highest power channel.

Place the EUT in positions as Appendix B demonstrates.

Set scan area, grid size and other setting on the MVG software.

Measure SAR results for the highest power channel on each testing position.

Find out the largest SAR result on these testing positions of each band.

Measure SAR results for other channels in worst SAR testing position if the Reported SAR or highest power channel is larger than 0.8 W/kg.

According to the test standard, the recommended procedure for assessing the peak spatial-average SAR value consists of the following steps:

Power reference measurement

Area scan

Zoom scan

Power drift measurement

### Spatial Peak SAR Evaluation

The procedure for spatial peak SAR evaluation has been implemented according to the test standard. It can be conducted for 1g and 10g, as well as for user-specific masses. The MVG software includes all numerical procedures necessary to evaluate the spatial peak SAR value.

The base for the evaluation is a “cube” measurement. The measured volume must include the 1g and 10 g cubes with the highest averaged SAR values. For that purpose, the center of the measured volume is aligned to the interpolated peak SAR value of a previously performed area scan.

The entire evaluation of the spatial peak values is performed within the post-processing engine (SEMCAD). The system always gives the maximum values for 1g and 10g cubes. The algorithm to find the cube with highest averaged SAR is divided into the following stages:

Extraction of the measured data (grid and values) from the Zoom Scan.

Calculation of the SAR value at every measurement point based on all stored data (A/D values and measurement parameters).

Generation of a high-resolution mesh within the measured volume.

Interpolation of all measured values from the measurement grid to the high-resolution grid

Extrapolation of the entire 3-D field distribution to the phantom surface over the distance from sensor to surface

Calculation of the averaged SAR within masses of 1g and 10g.

## Power Reference Measurement

The Power Reference Measurement and Power Drift Measurement are for monitoring the power drift of the device under test in the batch process. The minimum distance of probe sensors to surface determines the closest measurement point to phantom surface. This distance cannot be smaller than the distance of sensor calibration points to probe tip as defined in the probe properties

## Area & Zoom Scan Procedures

First Area Scan is used to locate the approximate location(s) of the local peak SAR value(s). The measurement grid within an Area Scan is defined by the grid extent, grid step size and grid offset. Next, in order to determine the EM field distribution in a three-dimensional spatial extension, Zoom Scan is required. The Zoom Scan is performed around the highest E-field value to determine the averaged SAR-distribution over 10g. Area scan and zoom scan resolution setting follows KDB 865664 D01v01r03 quoted below.

|   |                                    |  | $\leq 3$ GHz   | $> 3$ GHz   |
|---|------------------------------------|--|--|---|
| Maximum distance from closest measurement point (geometric center of probe sensors) to phantom surface  |                                    |  | $5 \pm 1$ mm   | $\frac{1}{4} \cdot \delta \cdot \ln(2) \pm 0.5$ mm                            |
| Maximum probe angle from probe axis to phantom surface normal at the measurement location   |                                    |  | $30^\circ \pm 1^\circ$   | $20^\circ \pm 1^\circ$  |
| Maximum area scan spatial resolution: $\Delta x_{Area}$ , $\Delta y_{Area}$   |                                    |  | $\leq 2$ GHz: $\leq 15$ mm<br>2 – 3 GHz: $\leq 12$ mm  | 3 – 4 GHz: $\leq 12$ mm<br>4 – 6 GHz: $\leq 10$ mm                            |
|   |                                    |  | When the x or y dimension of the test device, in the measurement plane orientation, is smaller than the above, the measurement resolution must be $\leq$ the corresponding x or y dimension of the test device with at least one measurement point on the test device. |   |
| Maximum zoom scan spatial resolution: $\Delta x_{Zoom}$ , $\Delta y_{Zoom}$   |                                    |  | $\leq 2$ GHz: $\leq 8$ mm<br>2 – 3 GHz: $\leq 5$ mm*   | 3 – 4 GHz: $\leq 5$ mm*<br>4 – 6 GHz: $\leq 4$ mm*                            |
| Maximum zoom scan spatial resolution, normal to phantom surface   | uniform grid: $\Delta z_{Zoom}(n)$ |  | $\leq 5$ mm  | 3 – 4 GHz: $\leq 4$ mm<br>4 – 5 GHz: $\leq 3$ mm<br>5 – 6 GHz: $\leq 2$ mm    |
|   | graded grid                        | $\Delta z_{Zoom}(1)$ : between 1 <sup>st</sup> two points closest to phantom surface | $\leq 4$ mm  | 3 – 4 GHz: $\leq 3$ mm<br>4 – 5 GHz: $\leq 2.5$ mm<br>5 – 6 GHz: $\leq 2$ mm  |
|   |                                    | $\Delta z_{Zoom}(n>1)$ : between subsequent points                                   | $\leq 1.5 \cdot \Delta z_{Zoom}(n-1)$  |   |
| Minimum zoom scan volume  | x, y, z                            |  | $\geq 30$ mm   | 3 – 4 GHz: $\geq 28$ mm<br>4 – 5 GHz: $\geq 25$ mm<br>5 – 6 GHz: $\geq 22$ mm |
| Note: $\delta$ is the penetration depth of a plane-wave at normal incidence to the tissue medium; see draft standard IEEE P1528-2011 for details.   |                                    |  |  |   |
| * When zoom scan is required and the <u>reported</u> SAR from the <u>area scan based 1-g SAR estimation</u> procedures of KDB 447498 is $\leq 1.4$ W/kg, $\leq 8$ mm, $\leq 7$ mm and $\leq 5$ mm zoom scan resolution may be applied, respectively, for 2 GHz to 3 GHz, 3 GHz to 4 GHz and 4 GHz to 6 GHz. |                                    |  |  |   |

## Volume Scan Procedures

The volume scan is used for assess overlapping SAR distributions for antennas transmitting in different frequency bands. It is equivalent to an oversized zoom scan used in standalone measurements. The measurement volume will be used to enclose all the simultaneous transmitting antennas. For antennas transmitting simultaneously in different frequency bands, the volume scan is measured separately in each frequency band. In order to sum correctly to compute the 1g aggregate SAR, the EUT remain in the same test position for all measurements and all volume scan use the same spatial resolution and grid spacing. When all volume scan were completed, the software, SEMCAD post-processor scan combine and subsequently superpose these measurement data to calculating the multiband SAR.

**SAR Averaged Methods**

In MVG, the interpolation and extrapolation are both based on the modified Quadratic Shepard's method. The interpolation scheme combines a least-square fitted function method and a weighted average method which are the two basic types of computational interpolation and approximation.

Extrapolation routines are used to obtain SAR values between the lowest measurement points and the inner phantom surface. The extrapolation distance is determined by the surface detection distance and the probe sensor offset. The uncertainty increases with the extrapolation distance. To keep the uncertainty within 1% for the 1g and 10g cubes, the extrapolation distance should not be larger than 5 mm.

**Power Drift Monitoring**

All SAR testing is under the EUT install full charged battery and transmit maximum output power. In MVG measurement software, the power reference measurement and power drift measurement procedures are used for monitoring the power drift of EUT during SAR test. Both these procedures measure the field at a specified reference position before and after the SAR testing. The software will calculate the field difference in dB. If the power drifts more than 5%, the SAR will be retested.

**Power Drift measurement**

The drift job measures the field at the same location as the most recent reference job within the same procedure, and with the same settings. The drift measurement gives the field difference in dB from the reading conducted within the last reference measurement. Several drift measurements are possible for

**Measurement Uncertainty**

Per KDB 865664 D01 SAR Measurement 100KHz to 6GHz, when the highest measurement 1-g SAR within a frequency band is  $<1.5\text{W/kg}$ , the extensive SAR measurement uncertainty analysis described IEEE Std 1528-2013 is not required in SAR report submitted for equipment approval.

## 8. Conducted Output Power

| WLAN 2.4G           |               |      |       |               |      |      |
|---------------------|---------------|------|-------|---------------|------|------|
| Mode                | 802.11b       |      |       | 802.11g       |      |      |
| Channel             | 1             | 6    | 11    | 1             | 6    | 11   |
| Frequency           | 2412          | 2437 | 2462  | 2412          | 2437 | 2462 |
| Average Power (dBm) | 10.87         | 8.83 | 10.35 | 3.74          | 2.82 | 4.65 |
| Mode                | 802.11n(HT20) |      |       | 802.11n(HT40) |      |      |
| Channel             | 1             | 6    | 11    | 3             | 6    | 9    |
| Frequency           | 2412          | 2437 | 2462  | 2422          | 2437 | 2452 |
| Average Power (dBm) | 3.87          | 3.01 | 5.18  | 3.72          | 3.67 | 4.43 |

| Channel | Frequency (GHz) | Max. Tune-up Power (dBm) | Max. Power (mW) | Test distance (mm) | Result | exclusion thresholds for 1-g SAR |
|---------|-----------------|--------------------------|-----------------|--------------------|--------|----------------------------------|
| 1       | 2412            | 11                       | 12.59           | 5                  | 3.91   | 3.0                              |

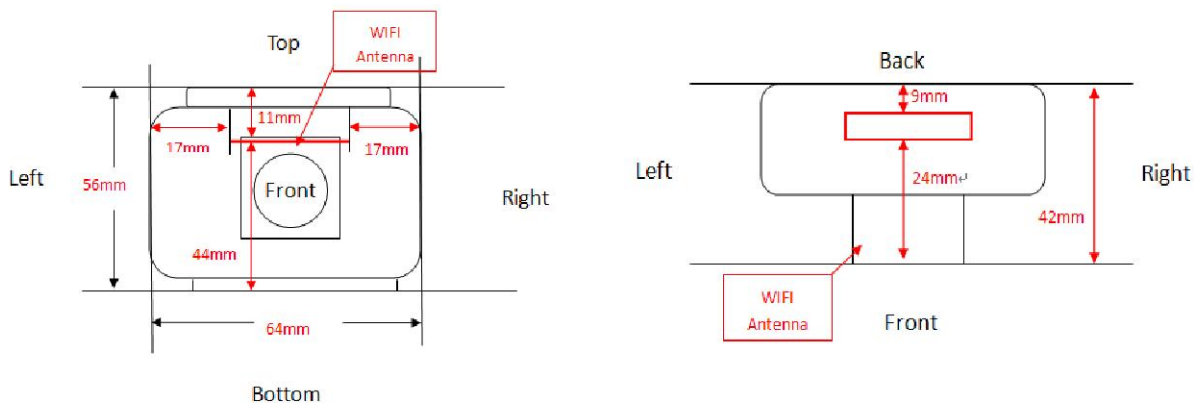
### Note

- Per KDB 447498 D01 v06, the 1-g SAR test exclusion thresholds for 100 MHz to 6 GHz at test separation distances  $\leq 50$  mm are determined by:  

$$[(\text{max. power of channel, including tune-up tolerance, mW}) / (\text{min. test separation distance, mm})] \cdot [\sqrt{f(\text{GHz})}] \leq 3.0$$
for 1-g SAR, where  
 ·f(GHz) is the RF channel transmit frequency in GHz  
 ·Power and distance are rounded to the nearest mW and mm before calculation  
 ·The result is rounded to one decimal place for comparison
- Base on the result of note1, RF exposure evaluation of 802.11 b mode is required.
- Per KDB 248227 D01 v02r02, choose the highest output power channel to test SAR and determine further SAR exclusion.
- Per KDB 248227 D01 v02r02, In the 2.4 GHz band, separate SAR procedures are applied to DSSS and OFDM configurations to simplify DSSS test requirements. SAR is not required for the following 2.4 GHz OFDM conditions:
  - When KDB Publication 447498 SAR test exclusion applies to the OFDM configuration.
  - When the highest reported SAR for DSSS is adjusted by the ratio of OFDM to DSSS specified maximum output power and the adjusted SAR is  $\leq 1.2$  W/kg.
  - The output power of all data rate were pre-scan, just the worst case (the lowest data rate) of all mode were shown in report.
- The output power of all data rate were pre-scan, just the worst case (the lowest data rate) of all mode were shown in report.

## 9. Exposure Position Consideration

### 9.1. EUT Antenna Location



### 9.2. Test Position Consideration

| Test Positions |      |       |          |             |            |           |
|----------------|------|-------|----------|-------------|------------|-----------|
| Mode           | Back | Front | Top Side | Bottom Side | Right Side | Left Side |
| WIFI           | 24mm | 9mm   | 11mm     | 44mm        | 17mm       | 17mm      |
|                | YES  | YES   | YES      | NO          | YES        | YES       |

**Note:**

1. KDB 648474 D04, particular DUT edges were not required to be evaluated for hotspot SAR if the antenna-to-edge distance is greater than 2.5cm

## 10. SAR Test Results Summary

### 10.1. Body-Worn 1g SAR Data

| Band | Mode    | Test Position with 0mm | CH. | Freq. (MHz) | Ave. Power (dBm) | Power Drift (%) | Tune-Up Limit (dBm) | Meas. SAR 1g (W/kg) | Scaling Factor | Reported SAR 1g (W/kg) | Limit (W/Kg) |
|------|---------|------------------------|-----|-------------|------------------|-----------------|---------------------|---------------------|----------------|------------------------|--------------|
| 2.4G | 802.11b | Back                   | 1   | 2412        | 10.87            | 0.49            | 11                  | 0.11                | 1.030          | 0.11                   | <b>1.60</b>  |
|      |         | Front                  | 1   | 2412        | 10.87            | -2.58           | 11                  | 0.06                | 1.030          | 0.06                   |              |
|      |         | Left                   | 1   | 242         | 10.87            | -2.42           | 11                  | 0.09                | 1.030          | 0.09                   |              |
|      |         | Right                  | 1   | 2412        | 10.87            | -0.51           | 11                  | 0.07                | 1.030          | 0.07                   |              |
|      |         | Top                    | 1   | 2412        | 10.87            | -3.04           | 11                  | 0.13                | 1.030          | <b>0.13</b>            |              |

**Note:**

1. Per KDB 447498 D01v05r02, for each exposure position, if the highest output power channel Reported SAR  $\leq 0.8$ W/kg, other channels SAR testing is not necessary.
2. Per KDB 447498 D01v05r02, the report SAR is measured SAR value adjusted for maximum tune-up tolerance. Scaling Factor=tune-up limit power (mW) / EUT RF power (mW), where tune-up limit is the maximum rated power among all production units.  
Reported SAR(W/kg)=Measured SAR (W/kg)\*Scaling Factor.
3. Per KDB 248227 D01 v02r02, 5.2.1, 802.11b DSSS SAR test requirements.



## 10.2. Measurement Uncertainty (450MHz-3GHz)

### UNCERTAINTY EVALUATION FOR HANDSET SAR TEST

| Uncertainty Component   | Description | Tol.<br>(± %) | Prob.<br>Dist. | Div.       | $c_1$<br>(1 g)  | $c_2$<br>(10 g) | 1 g<br>$u_1$<br>(± %) | 10 g<br>$u_2$<br>(± %) | $v_i$ |
|---|-------------|---------------|----------------|------------|-----------------|-----------------|-----------------------|------------------------|-------|
| <b>Measurement System</b>   |             |               |                |            |                 |                 |                       |                        |       |
| Probe Calibration   | 7.2.1       | 5.8           | N              | 1          | 1               | 1               | 5.8                   | 5.8                    | ∞     |
| Axial Isotropy  | 7.2.1.1     | 3.5           | R              | $\sqrt{3}$ | $(1-c_2)^{1/2}$ | $(1-c_2)^{1/2}$ | 1.43                  | 1.43                   | ∞     |
| Hemispherical Isotropy  | 7.2.1.1     | 5.9           | R              | $\sqrt{3}$ | $\sqrt{C_2}$    | $\sqrt{C_2}$    | 2.41                  | 2.41                   | ∞     |
| Boundary Effect   | 7.2.1.4     | 1             | R              | $\sqrt{3}$ | 1               | 1               | 0.58                  | 0.58                   | ∞     |
| Linearity   | 7.2.1.2     | 4.7           | R              | $\sqrt{3}$ | 1               | 1               | 2.71                  | 2.71                   | ∞     |
| System Detection Limits   | 7.2.1.2     | 1             | R              | $\sqrt{3}$ | 1               | 1               | 0.58                  | 0.58                   | ∞     |
| Modulation response   | 7.2.1.3     | 3             | N              | 1          | 1               | 1               | 3.00                  | 3.00                   | ∞     |
| Readout Electronics   | 7.2.1.5     | 0.5           | N              | 1          | 1               | 1               | 0.50                  | 0.50                   | ∞     |
| Response Time   | 7.2.1.6     | 0             | R              | $\sqrt{3}$ | 1               | 1               | 0.00                  | 0.00                   | ∞     |
| Integration Time  | 7.2.1.7     | 1.4           | R              | $\sqrt{3}$ | 1               | 1               | 0.81                  | 0.81                   | ∞     |
| RF Ambient Conditions - Noise   | 7.2.3.7     | 3             | R              | $\sqrt{3}$ | 1               | 1               | 1.73                  | 1.73                   | ∞     |
| RF Ambient Conditions - Reflections   | 7.2.3.7     | 3             | R              | $\sqrt{3}$ | 1               | 1               | 1.73                  | 1.73                   | ∞     |
| Probe Positioner Mechanical Tolerance   | 7.2.2.1     | 1.4           | R              | $\sqrt{3}$ | 1               | 1               | 0.81                  | 0.81                   | ∞     |
| Probe Positioning with respect to Phantom Shell                                 | 7.2.2.3     | 1.4           | R              | $\sqrt{3}$ | 1               | 1               | 0.81                  | 0.81                   | ∞     |
| Extrapolation, interpolation and Integration Algorithms for Max. SAR Evaluation | 7.2.4       | 2.3           | R              | $\sqrt{3}$ | 1               | 1               | 1.33                  | 1.33                   | ∞     |
| <b>Test sample Related</b>  |             |               |                |            |                 |                 |                       |                        |       |
| Test Sample Positioning   | 7.2.2.4.4   | 2.6           | N              | 1          | 1               | 1               | 2.60                  | 2.60                   | 11    |
| Device Holder Uncertainty   | 7.2.2.4.2   | 3             | N              | 1          | 1               | 1               | 3.00                  | 3.00                   | 7     |
|   | 7.2.2.4.3   |               |                |            |                 |                 |                       |                        |       |
| Output Power Variation - SAR drift measurement                                  | 7.2.3.6     | 5             | R              | $\sqrt{3}$ | 1               | 1               | 2.89                  | 2.89                   | ∞     |
| SAR scaling   | 7.2.5       | 2             | R              | $\sqrt{3}$ | 1               | 1               | 1.15                  | 1.15                   | ∞     |
| <b>Phantom and Tissue Parameters</b>  |             |               |                |            |                 |                 |                       |                        |       |
| Phantom Uncertainty (shape and thickness tolerances)                            | 7.2.2.2     | 4             | R              | $\sqrt{3}$ | 1               | 1               | 2.31                  | 2.31                   | ∞     |
| Uncertainty in SAR correction for deviation (in permittivity and conductivity)  | 7.2.6       | 2             | N              | 1          | 1               | 0.84            | 2.00                  | 1.68                   | ∞     |
| Liquid Conductivity (temperature uncertainty)                                   | 7.2.3.5     | 2.5           | N              | 1          | 0.78            | 0.71            | 1.95                  | 1.78                   | 5     |
| Liquid Conductivity - measurement uncertainty                                   | 7.2.3.3     | 4             | N              | 1          | 0.23            | 0.26            | 0.92                  | 1.04                   | 5     |
| Liquid Permittivity (temperature uncertainty)                                   | 7.2.3.5     | 2.5           | N              | 1          | 0.78            | 0.71            | 1.95                  | 1.78                   | ∞     |
| Liquid Permittivity - measurement uncertainty                                   | 7.2.3.4     | 5             | N              | 1          | 0.23            | 0.26            | 1.15                  | 1.30                   | ∞     |
| Combined Standard Uncertainty   |             |               | RSS            |            |                 |                 | 10.63                 | 10.54                  |       |
| Expanded Uncertainty (95% CONFIDENCE INTERVAL)                                  |             |               | k              |            |                 |                 | 21.28                 | 21.08                  |       |

## UNCERTAINTY FOR SYSTEM PERFORMANCE CHECK

| Uncertainty Component   |         | Tol.<br>(± %) | Prob.<br>Dist. | Div.       | c<br>(1 g)      | c<br>(10 g)     | 1 g<br>u<br>(± %) | 10 g<br>u<br>(± %) | v |
|---|---------|---------------|----------------|------------|-----------------|-----------------|-------------------|--------------------|---|
| <b>Measurement System</b>   |         |               |                |            |                 |                 |                   |                    |   |
| Probe Calibration   | 7.2.1   | 5.8           | N              | 1          | 1               | 1               | 5.80              | 5.80               | ∞ |
| Axial Isotropy  | 7.2.1.1 | 3.5           | R              | $\sqrt{3}$ | $(1-c_2)^{1/2}$ | $(1-c_2)^{1/2}$ | 1.43              | 1.43               | ∞ |
| Hemispherical Isotropy  | 7.2.1.1 | 5.9           | R              | $\sqrt{3}$ | $\sqrt{c_2}$    | $\sqrt{c_2}$    | 2.41              | 2.41               | ∞ |
| Boundary Effect   | 7.2.1.4 | 1             | R              | $\sqrt{3}$ | 1               | 1               | 0.58              | 0.58               | ∞ |
| Linearity   | 7.2.1.2 | 4.7           | R              | $\sqrt{3}$ | 1               | 1               | 2.71              | 2.71               | ∞ |
| System Detection Limits   | 7.2.1.2 | 1             | R              | $\sqrt{3}$ | 1               | 1               | 0.58              | 0.58               | ∞ |
| Modulation response   | 7.2.1.3 | 0             | N              | 1          | 1               | 1               | 0.00              | 0.00               | ∞ |
| Readout Electronics   | 7.2.1.5 | 0.5           | N              | 1          | 1               | 1               | 0.50              | 0.50               | ∞ |
| Response Time   | 7.2.1.6 | 0             | R              | $\sqrt{3}$ | 1               | 1               | 0.00              | 0.00               | ∞ |
| Integration Time  | 7.2.1.7 | 1.4           | R              | $\sqrt{3}$ | 1               | 1               | 0.81              | 0.81               | ∞ |
| RF Ambient Conditions - Noise   | 7.2.3.7 | 3             | R              | $\sqrt{3}$ | 1               | 1               | 1.73              | 1.73               | ∞ |
| RF Ambient Conditions - Reflections   | 7.2.3.7 | 3             | R              | $\sqrt{3}$ | 1               | 1               | 1.73              | 1.73               | ∞ |
| Probe Positioner/Mechanical Tolerance   | 7.2.2.1 | 1.4           | R              | $\sqrt{3}$ | 1               | 1               | 0.81              | 0.81               | ∞ |
| Probe Positioning with respect to Phantom Shell                                 | 7.2.2.3 | 1.4           | R              | $\sqrt{3}$ | 1               | 1               | 0.81              | 0.81               | ∞ |
| Extrapolation, interpolation and Integration Algorithms for Max. SAR Evaluation | 7.2.4   | 2.3           | R              | $\sqrt{3}$ | 1               | 1               | 1.33              | 1.33               | ∞ |
| <b>Dipole</b>   |         |               |                |            |                 |                 |                   |                    |   |
| Deviation of experimental source from numerical source                          |         | 4             | N              | 1          | 1               | 1               | 4.00              | 4.00               | ∞ |
| Input Power and SAR drift measurement   | 7.2.3.6 | 5             | R              | $\sqrt{3}$ | 1               | 1               | 2.89              | 2.89               | ∞ |
| Dipole Axis to Liquid Distance  |         | 2             | R              | $\sqrt{3}$ | 1               | 1               |                   |                    | ∞ |
| <b>Phantom and Tissue Parameters</b>  |         |               |                |            |                 |                 |                   |                    |   |
| Phantom Uncertainty (shape and thickness tolerances)                            |         | 4             | R              | $\sqrt{3}$ | 1               | 1               | 2.31              | 2.31               | ∞ |
| Uncertainty in SAR correction for deviation (in permittivity and conductivity)  | 7.2.6   | 2             | N              | 1          | 1               | 0.84            | 2.00              | 1.68               | ∞ |
| Liquid Conductivity (temperature uncertainty)                                   | 7.2.3.5 | 2.5           | N              | 1          | 0.78            | 0.71            | 1.95              | 1.78               | 5 |
| Liquid Conductivity - measurement uncertainty                                   | 7.2.3.3 | 4             | N              | 1          | 0.23            | 0.26            | 0.92              | 1.04               | 5 |
| Liquid Permittivity (temperature uncertainty)                                   | 7.2.3.5 | 2.5           | N              | 1          | 0.78            | 0.71            | 1.95              | 1.78               | ∞ |
| Liquid Permittivity - measurement uncertainty                                   | 7.2.3.4 | 5             | N              | 1          | 0.23            | 0.26            | 1.15              | 1.30               | ∞ |
| Combined Standard Uncertainty   |         |               | RSS            |            |                 |                 | 10.15             | 10.05              |   |
| Expanded Uncertainty (95% CONFIDENCE INTERVAL)                                  |         |               | k              |            |                 |                 | 20.29             | 20.10              |   |



### 10.3. Test Equipment List

| Test Equipment               | Manufacturer | Model           | Serial Number             | Calibration              |                         |
|------------------------------|--------------|-----------------|---------------------------|--------------------------|-------------------------|
|                              |              |                 |                           | Calibration Date (D.M.Y) | Calibration Due (D.M.Y) |
| PC                           | Lenovo       | H3050           | N/A                       | N/A                      | N/A                     |
| Signal Generator             | Agilent      | N5182A          | MY47070282                | 12/09/2015               | 11/09/2016              |
| Multimeter                   | Keithley     | MiltiMeter 2000 | 4078275                   | 12/09/2015               | 11/09/2016              |
| Network Analyzer             | Agilent      | 8753E           | US38432457                | 12/09/2015               | 11/09/2016              |
| Power Meter                  | Agilent      | E4418B          | GB43312526                | 12/09/2015               | 11/09/2016              |
| Power Meter                  | Agilent      | E4416A          | MY45101555                | 12/09/2015               | 11/09/2016              |
| Power Meter                  | Agilent      | N1912A          | MY50001018                | 12/09/2015               | 11/09/2016              |
| Power Sensor                 | Agilent      | E9301A          | MY41497725                | 12/09/2015               | 11/09/2016              |
| Power Sensor                 | Agilent      | E9327A          | MY44421198                | 12/09/2015               | 11/09/2016              |
| Power Sensor                 | Agilent      | E9323A          | MY53070005                | 12/09/2015               | 11/09/2016              |
| Power Amplifier              | PE           | PE15A4019       | 112342                    | N/A                      | N/A                     |
| Directional Coupler          | Agilent      | 722D            | MY52180104                | N/A                      | N/A                     |
| Attenuator                   | Chensheng    | FF779           | 134251                    | N/A                      | N/A                     |
| E-Field PROBE                | MVG          | SSE5            | SN 07/15<br>EP248         | 27/04/2016               | 26/04/2017              |
| DIPOLE 2450                  | MVG          | SID 2450        | SN 16/15 DIP<br>2G450-374 | 06/05/2016               | 05/05/2019              |
| Limesar Dielectric Probe     | MVG          | SCLMP           | SN 19/15<br>OCPG71        | 06/05/2016               | 05/05/2019              |
| Communication Antenna        | MVG          | ANTA59          | SN 39/14<br>ANTA59        | N/A                      | N/A                     |
| Mobile Phone Position Device | MVG          | MSH101          | SN 19/15<br>MSH101        | N/A                      | N/A                     |
| Dummy Probe                  | MVG          | DP66            | SN 13/15<br>DP66          | N/A                      | N/A                     |
| SAM PHANTOM                  | MVG          | SAM120          | SN 19/15<br>SAM120        | N/A                      | N/A                     |
| PHANTOM TABLE                | MVG          | TABP101         | SN 19/15<br>TABP101       | N/A                      | N/A                     |
| Robot TABLE                  | MVG          | TABP61          | SN 19/15<br>TABP61        | N/A                      | N/A                     |
| 6 AXIS ROBOT                 | KUKA         | KR6-R900        | 501822                    | N/A                      | N/A                     |

**Note:**

- 1.N/A means this equipment no need to calibrate
- 2.Each Time means this device need to calibrate every use time

## 11. System Check Results

Date of measurement: 24/06/2016 Test mode: 2450MHz (Body)

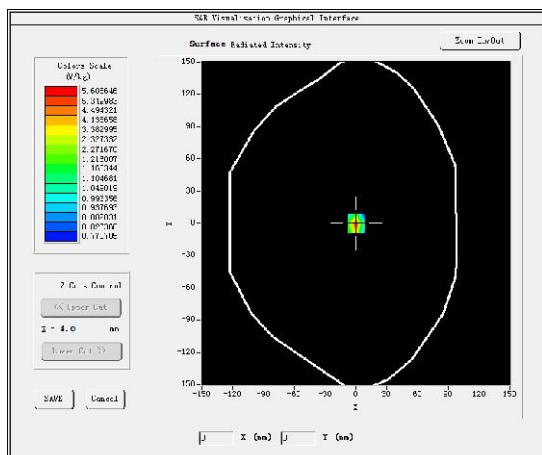
Product Description: Validation

Dipole Model: SID2450

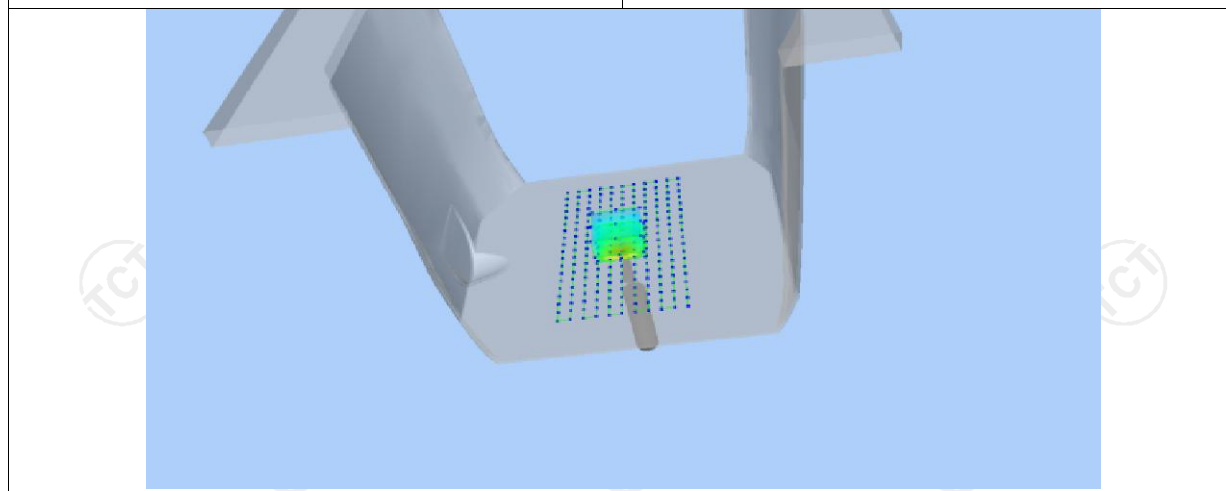
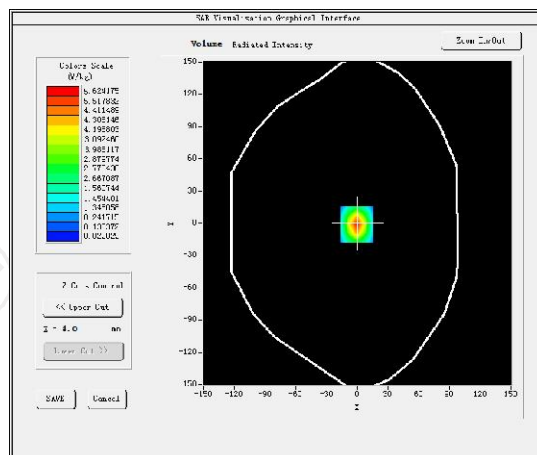
E-Field Probe: SSE5 (SN 07/15 EP248)

|  |                  |
|--|------------------|
| Phantom                                | Validation plane |
| Input Power                            | 100mW            |
| Crest Factor                           | 1.0              |
| Probe Conversion factor                | 4.36             |
| Frequency (MHz)                        | 2450.000000      |
| Relative permittivity (real part)      | 54.620667        |
| Relative permittivity (imaginary part) | 14.318444        |
| Conductivity (S/m)                     | 2.012536         |
| Variation (%)                          | -0.230000        |
| <b>SAR 10g (W/Kg)</b>                  | <b>2.416669</b>  |
| <b>SAR 1g (W/Kg)</b>                   | <b>5.066368</b>  |

### SURFACE SAR



### VOLUME SAR



## 12. SAR Test Data

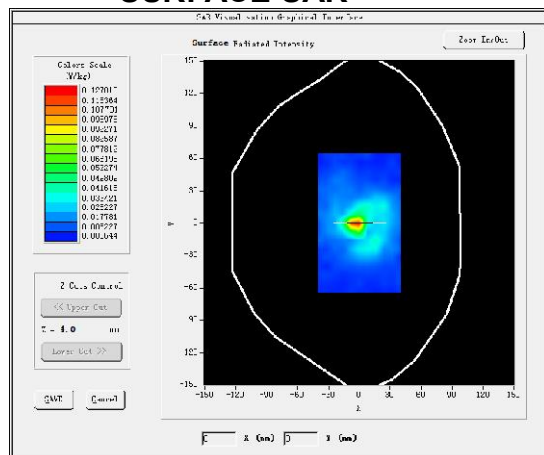
### WLAN 2.4GHz MEASUREMENT 1

Middle Band SAR (Channel 1):

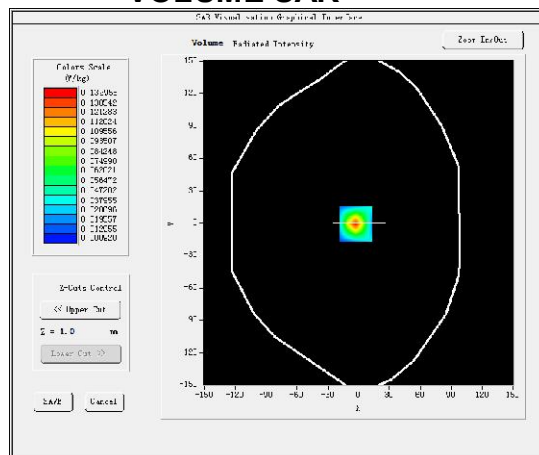
Date: 24/06/2016

|  |   |
|--|---|
| Frequency (MHz)                        | 2412.000000   |
| Relative permittivity (real part)      | 54.650667   |
| Relative permittivity (imaginary part) | 14.318444   |
| Conductivity (S/m)                     | 1.972536  |
| Variation (%)                          | 0.490000  |
| Crest Factor                           | 1.0   |
| Probe Conversion factor                | 4.36  |
| E-Field Probe:                         | SSE5 (SN 07/15 EP248)   |
| Area Scan                              | dx=8mm dy=8mm, h= 5.00 mm   |
| ZoomScan                               | 5x5x7, dx=8mm dy=8mm<br>dz=5mm, Complete/ndx=8mm dy=8mm, h= 5.00 mm |
| Phantom                                | Validation plane  |
| Device Position                        | Body back   |
| Band                                   | IEEE 802.11b ISM  |

### SURFACE SAR



### VOLUME SAR



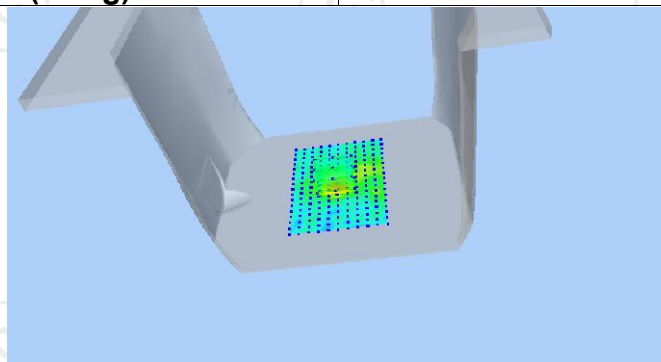
Maximum location: X=-1.00, Y=0.00 SAR Peak: 0.16 W/kg

SAR 10g (W/Kg)

0.066581

SAR 1g (W/Kg)

0.113971



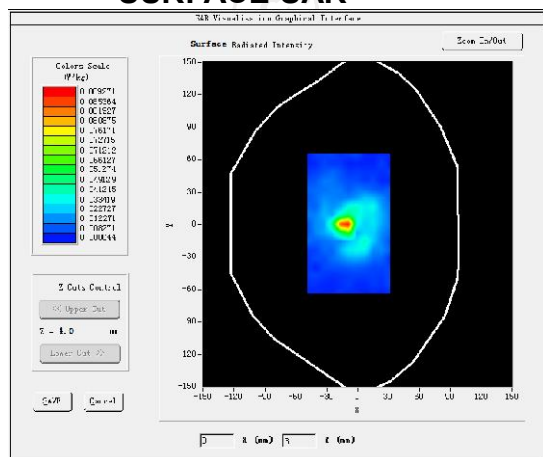
## MEASUREMENT 2

Middle Band SAR (Channel 1):

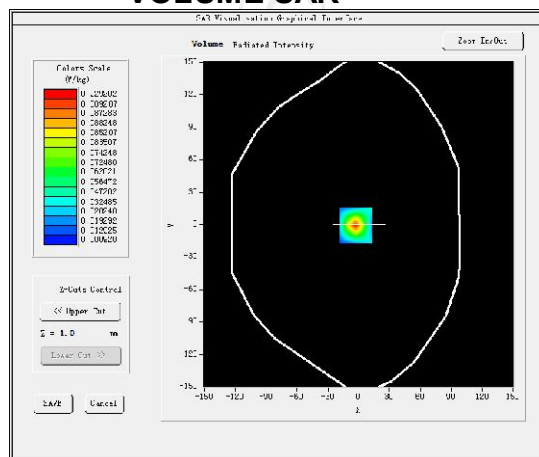
Date: 24/06/2016

|  |   |
|--|---|
| Frequency (MHz)                        | 2412.000000   |
| Relative permittivity (real part)      | 54.650667   |
| Relative permittivity (imaginary part) | 14.318444   |
| Conductivity (S/m)                     | 1.972536  |
| Variation (%)                          | -2.580000   |
| Crest Factor                           | 1.0   |
| Probe Conversion factor                | 4.36  |
| E-Field Probe:                         | SSE5 (SN 07/15 EP248)   |
| Area Scan                              | dx=8mm dy=8mm, h= 5.00 mm   |
| ZoomScan                               | 5x5x7, dx=8mm dy=8mm<br>dz=5mm, Complete/ndx=8mm dy=8mm, h= 5.00 mm |
| Phantom                                | Validation plane  |
| Device Position                        | Body front  |
| Band                                   | IEEE 802.11b ISM  |

### SURFACE SAR



### VOLUME SAR



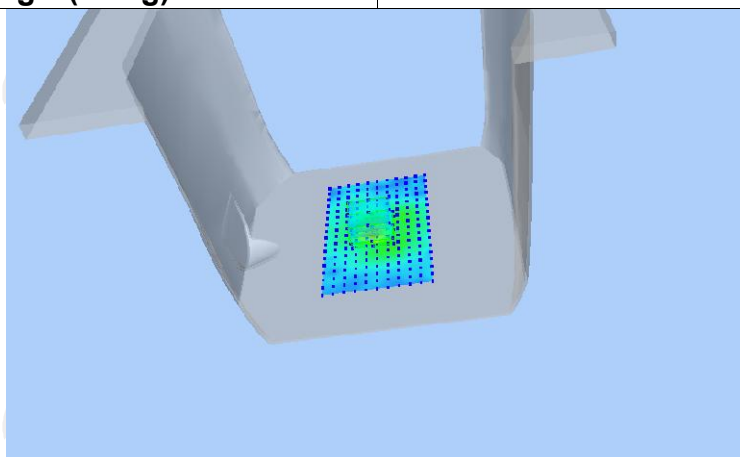
Maximum location: X=0.00, Y=3.00 SAR Peak: 0.10 W/kg

SAR 10g (W/Kg)

0.040122

SAR 1g (W/Kg)

0.059175



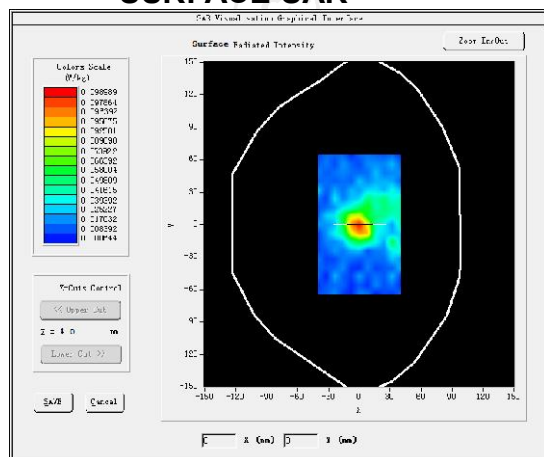
## MEASUREMENT 3

Middle Band SAR (Channel 1):

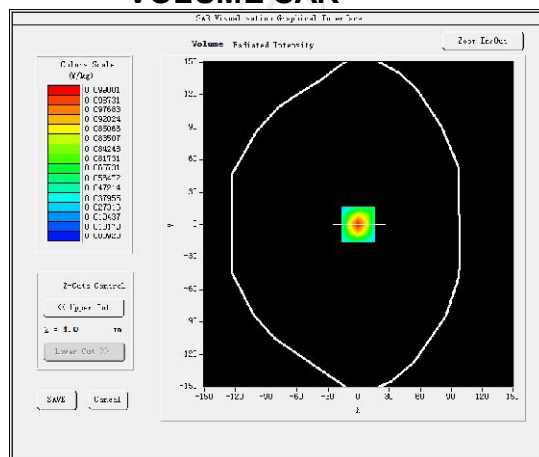
Date: 24/06/2016

|  |   |
|--|---|
| Frequency (MHz)                        | 2412.000000   |
| Relative permittivity (real part)      | 54.650667   |
| Relative permittivity (imaginary part) | 14.318444   |
| Conductivity (S/m)                     | 1.972536  |
| Variation (%)                          | -0.510000   |
| Crest Factor                           | 1.0   |
| Probe Conversion factor                | 4.36  |
| E-Field Probe:                         | SSE5 (SN 07/15 EP248)   |
| Area Scan                              | dx=8mm dy=8mm, h= 5.00 mm   |
| ZoomScan                               | 5x5x7, dx=8mm dy=8mm<br>dz=5mm, Complete/ndx=8mm dy=8mm, h= 5.00 mm |
| Phantom                                | Validation plane  |
| Device Position                        | Body right  |
| Band                                   | IEEE 802.11b ISM  |

### SURFACE SAR



### VOLUME SAR



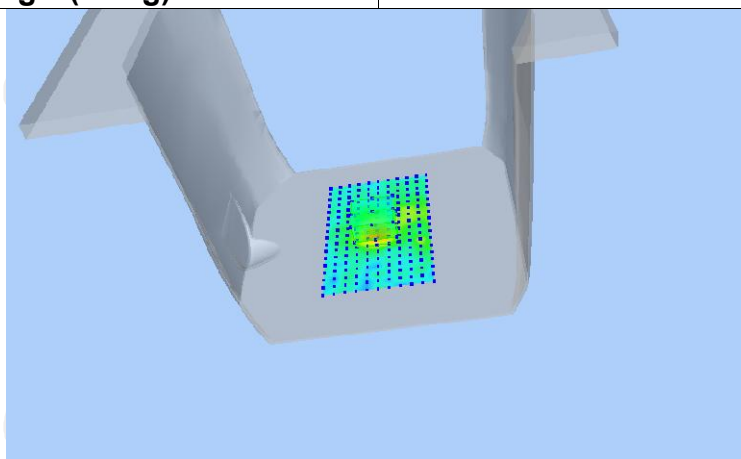
Maximum location: X=0.00, Y=0.00 SAR Peak: 0.13 W/kg

SAR 10g (W/Kg)

0.033525

SAR 1g (W/Kg)

0.074698



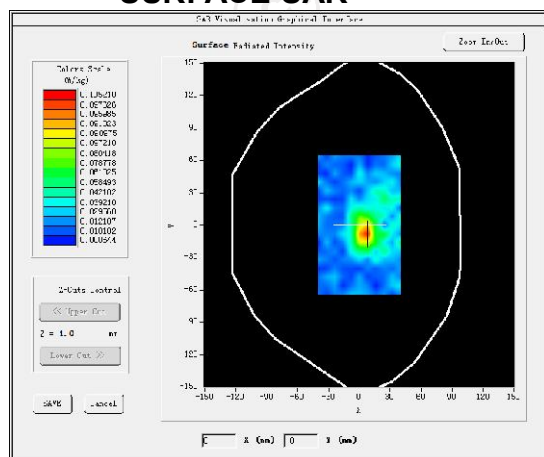
## MEASUREMENT 4

Middle Band SAR (Channel 1):

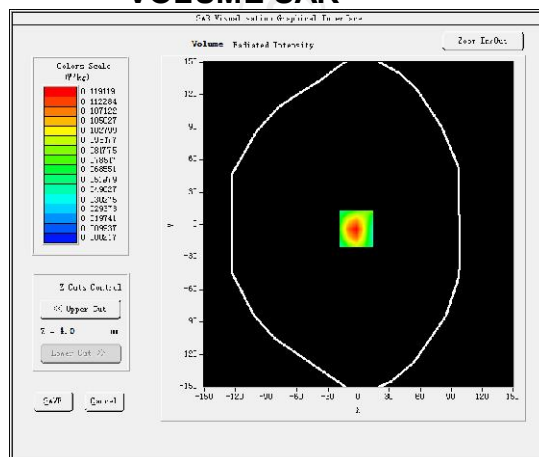
Date: 24/06/2016

|  |   |
|--|---|
| Frequency (MHz)                        | 2412.000000   |
| Relative permittivity (real part)      | 54.650667   |
| Relative permittivity (imaginary part) | 14.318444   |
| Conductivity (S/m)                     | 1.972536  |
| Variation (%)                          | -2.420000   |
| Crest Factor                           | 1.0   |
| Probe Conversion factor                | 4.36  |
| E-Field Probe:                         | SSE5 (SN 07/15 EP248)   |
| Area Scan                              | dx=8mm dy=8mm, h= 5.00 mm   |
| ZoomScan                               | 5x5x7, dx=8mm dy=8mm<br>dz=5mm, Complete/ndx=8mm dy=8mm, h= 5.00 mm |
| Phantom                                | Validation plane  |
| Device Position                        | Body left   |
| Band                                   | IEEE 802.11b ISM  |

### SURFACE SAR

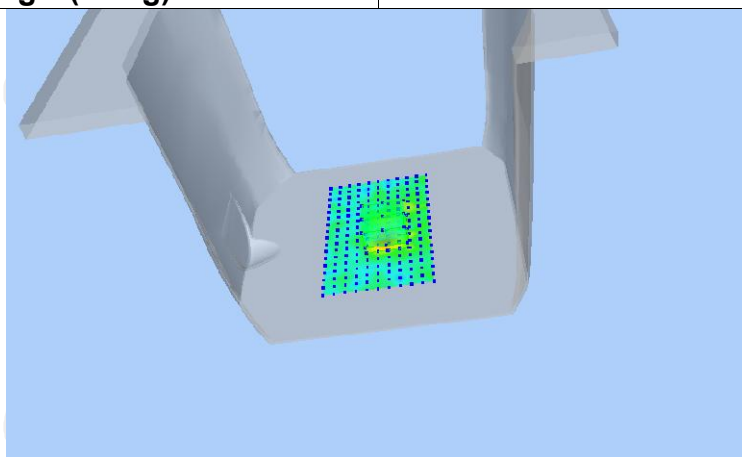


### VOLUME SAR



Maximum location: X=-9.00, Y=7.00 SAR Peak: 0.14 W/kg

|                |          |
|----------------|----------|
| SAR 10g (W/Kg) | 0.053525 |
| SAR 1g (W/Kg)  | 0.091698 |





## MEASUREMENT 5

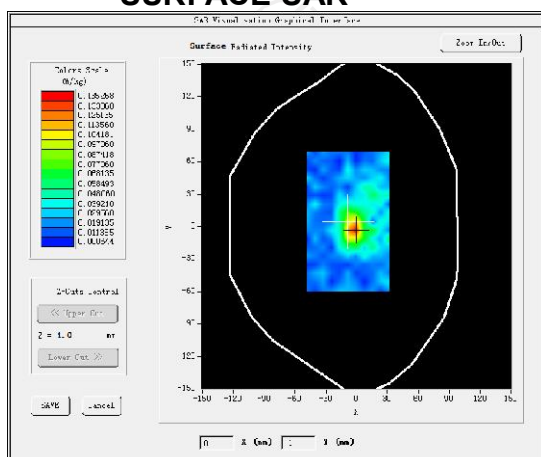
Middle Band SAR (Channel 1):

Date: 24/06/2016

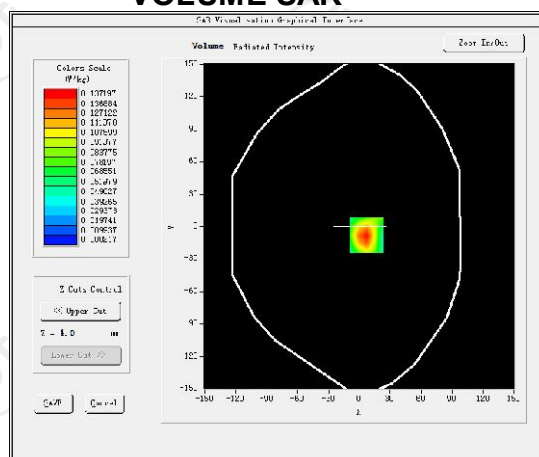
|  |   |
|--|---|
| Frequency (MHz)                        | 2412.000000   |
| Relative permittivity (real part)      | 54.650667   |
| Relative permittivity (imaginary part) | 14.318444   |
| Conductivity (S/m)                     | 1.972536  |
| Variation (%)                          | -3.040000   |
| Crest Factor                           | 1.0   |
| Probe Conversion factor                | 4.36  |
| E-Field Probe:                         | SSE5 (SN 07/15 EP248)   |
| Area Scan                              | <u>dx=8mm dy=8mm, h= 5.00 mm</u>  |
| ZoomScan                               | <u>5x5x7, dx=8mm dy=8mm</u><br><u>dz=5mm, Complete/ndx=8mm dy=8mm, h=</u><br><u>5.00 mm</u> |

|                 |                  |
|-----------------|------------------|
| Phantom         | Validation plane |
| Device Position | Body top         |
| Band            | IEEE 802.11b ISM |

### SURFACE SAR

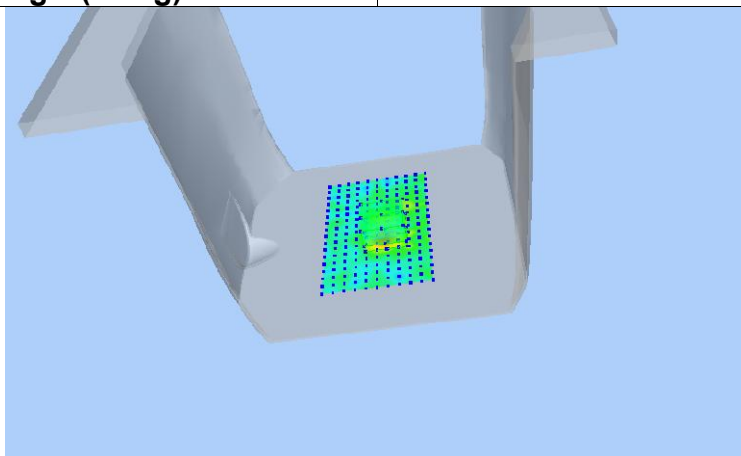


### VOLUME SAR



Maximum location: X=0.00, Y=-1.00 SAR Peak: 0.17 W/kg

|                |          |
|----------------|----------|
| SAR 10g (W/Kg) | 0.094408 |
| SAR 1g (W/Kg)  | 0.127719 |



**Appendix A: EUT Photos**

**Appendix B: Test Setup Photos**

**(Pls See SAR Test Setup)**

**Appendix C: Probe Calibration Certificate**

**Appendix D: Dipole Calibration Report**

**(Pls See SAR Appendix I )**

**\*\*\*\*\*END OF REPORT\*\*\*\*\***