

MUSIC WATCH

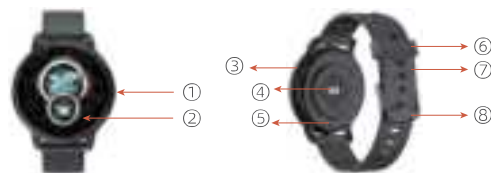
Fashionable smart watch with music control



TABLE OF CONTENTS/目录

I .Functional Description	1
II .Operation Method	1
III.Specificaton	4
IV.Notice	4
V .APP code (Android or IOS) ,scan please.	4
一、功能描述	5
二、使用方法	5
三、规格参数	8
四、注意事项	8
五、下载，安装APP 二维码	8



I .Functional Description



①	KEY	③	Zinc alloy housing	⑤	Charging terminal	⑦	TPU watchband
②	1.09 TFT	④	Heart rate LED	⑥	clasp	⑧	Metal clasp

II .Operation Method(in the APP link state, real-timesynchronization)


1.Turn on: long press key 3S,show main interface.

2.UI switch: slide into , touch , long press key 3S, choose like UI and keeing.

3.step test: , in the APP link state, real-timesynchronization.

4.heart rate test: slide into ,in the APP link state, real-timesynchronization.

5.sleep test: slide into , in the APP link state, real-timesynchronization.

6.music control : slide into  ,in the APP link state , real-time control and playback of music on mobile phone。

7.photos: slide into  , in the APP link state , real-time control and playback of photo on mobile phone。

8.sports mode

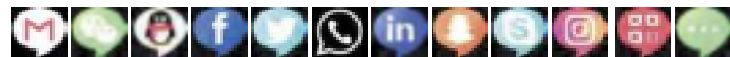
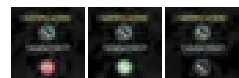
Totle 8 sports: walke, running, paly badminton, climbing, play basketball, rid on a bicycle, paly football, play basketball



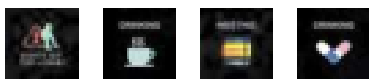
slide into sports, follow refer to:



9. BT CALL and Information push
in the APP link state, Open the APP phone message push function。



10.Remind: Sedentary warn、Drinking、meeting、take medicine、alarm clock、search phone in the APP link state, Open the APP phone message push function。



11.Setting:

● Restart



● Turn off



● Brightness contuol



● Reset

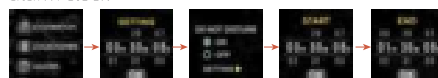


● About



12、10、 Other functional: follow zhe steps, in the APP link state.

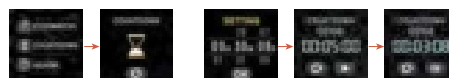
● alarm clock



● stopwatch



● count down



● search phone



● charging



● QR code



III.Specificaton

Project	Discription	Project	Discription
MCU	Realtek8762CK	Running current	15-30μA
Battew Specificaton	180mAH	Standby current	7-9μA
TFT	1.28 TFT	Waterproof level	IP67
Charge time	2H	Touch type	Touch full

IV.Notice

- For the first use,charge after the battery is used up.
- Before connecting to the APP,open the APP authorization of the mobile phone system.
- When the signal is not disturbed,thebluetooth of the mobile phone is tuened on.
- This is waterpoof for life ,not suitable for swimming and other sports.
- Prevent high temperature above 30°.

V .APP code (Android or IOS) ,scan please.



FCC Statement:

This device complies with Part 15 of the FCC rules. Operation is subject to the following two conditions: 1) this device may not cause harmful interference, and 2) this device must accept any interference received, including interference that may cause undesired operation.

This equipment has been tested and found to comply with the limits for a Class B digital device, pursuant to Part 15 of the FCC rules. These limits are designed to provide reasonable protection against harmful interference in a residential installation. This equipment generates, uses and can radiate radio frequency energy and if not installed and used in accordance with the instructions, may cause harmful interference to radio communications. However, there is no guarantee that interference will not occur in a particular installation. If this equipment does cause harmful interference to radio or television reception, which can be determined by turning the equipment off and on, the user is encouraged to try correct the interference by one or more of the following measures:

- Reorient the receiving antenna.
- Increase the separation between the equipment and receiver.
- Connect the equipment into and outlet on a circuit different from that to which the receiver is connected.
- Consult the dealer or an experienced radio/TV technician for help.

Changes or modifications not expressly approved by the party responsible for compliance could void your authority to operate the equipment.