

APPENDIX E: DUT ANTENNA DIAGRAM & SAR TEST SETUP PHOTOGRAPHS

FCC ID A3LSMF936U	SAR EVALUATION REPORT	Approved by: Technical Manager
DUT Type: Portable Handset		APPENDIX E: Page 1 of 20

Note: Exact antenna dimensions and separation distances are shown in the Technical Descriptions in the FCC Filing.

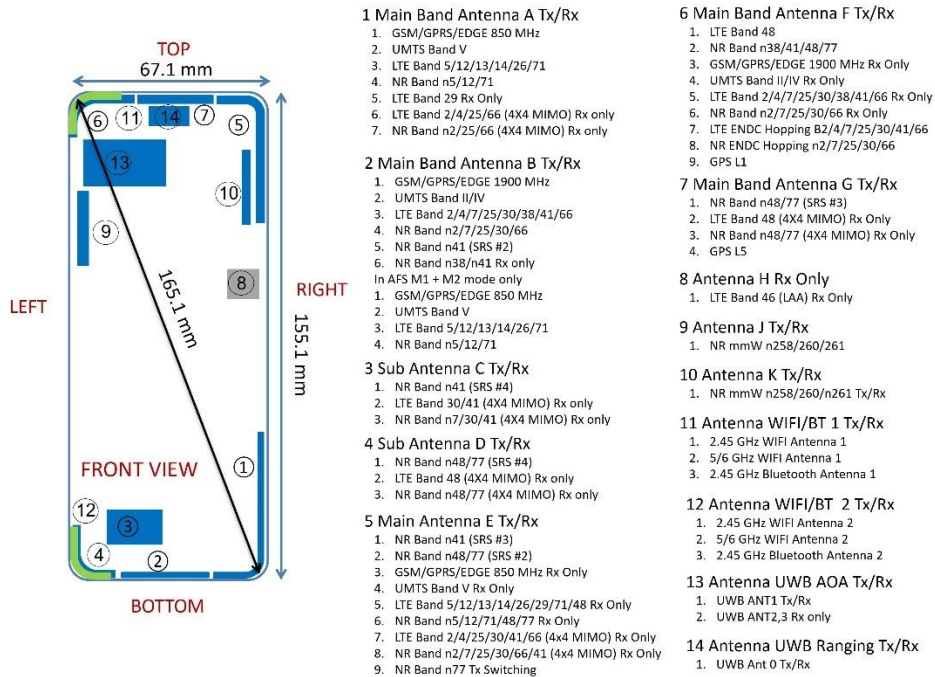


Figure E-1
DUT Antenna Locations – Closed Configuration (Handset)

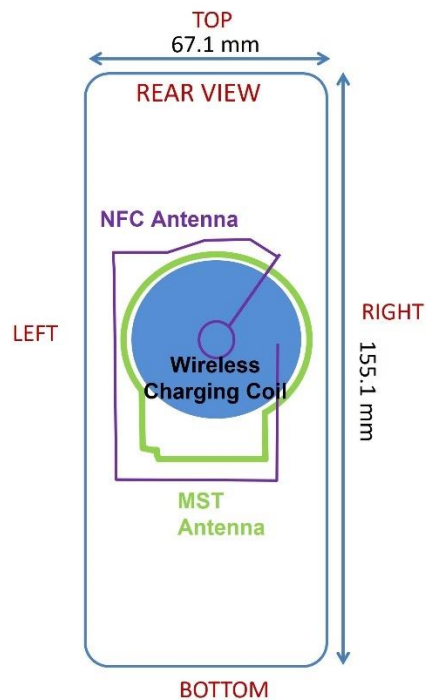


Figure E-2
Other Antenna Locations – Closed Configuration (Handset)

FCC ID A3LSMF936U	SAR EVALUATION REPORT	Approved by: Technical Manager
DUT Type: Portable Handset		APPENDIX E: Page 2 of 20

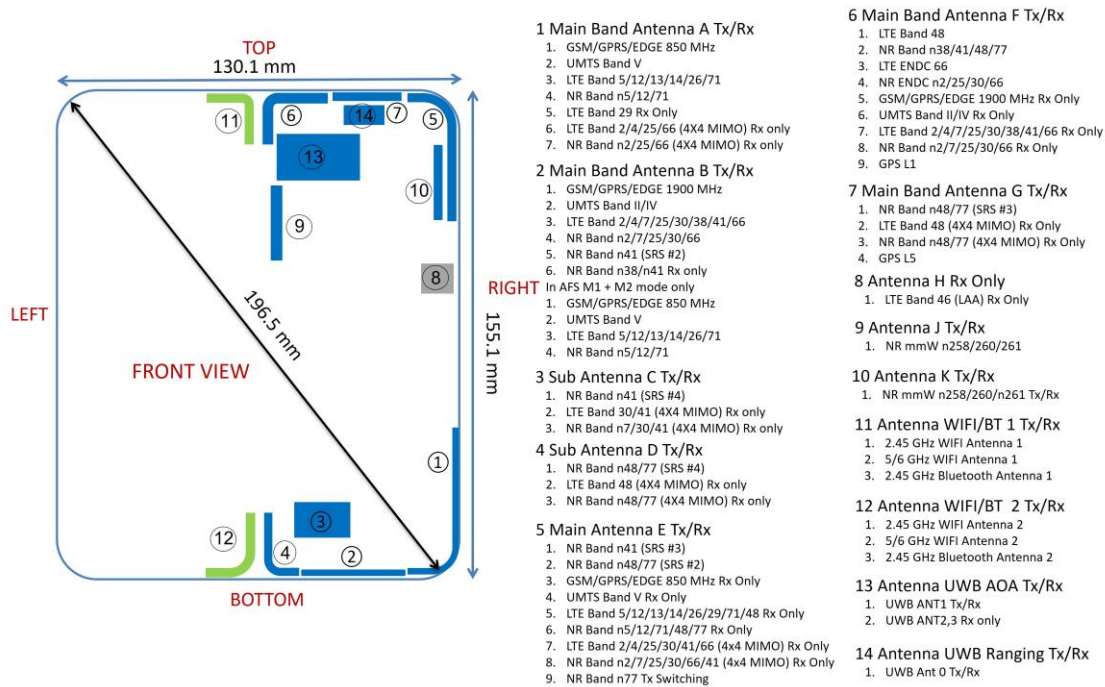


Figure E-3
DUT Antenna Locations – Open Configuration (UMPC)

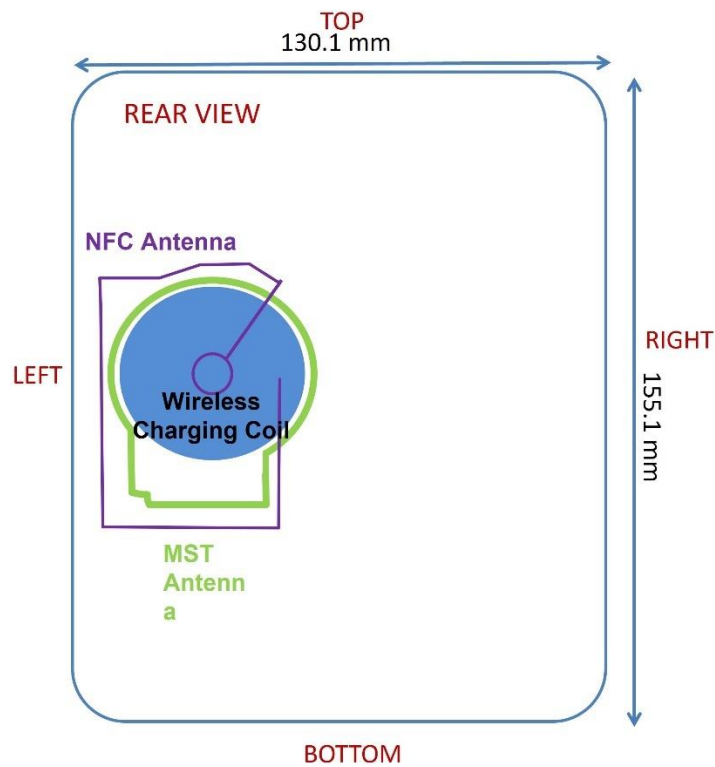
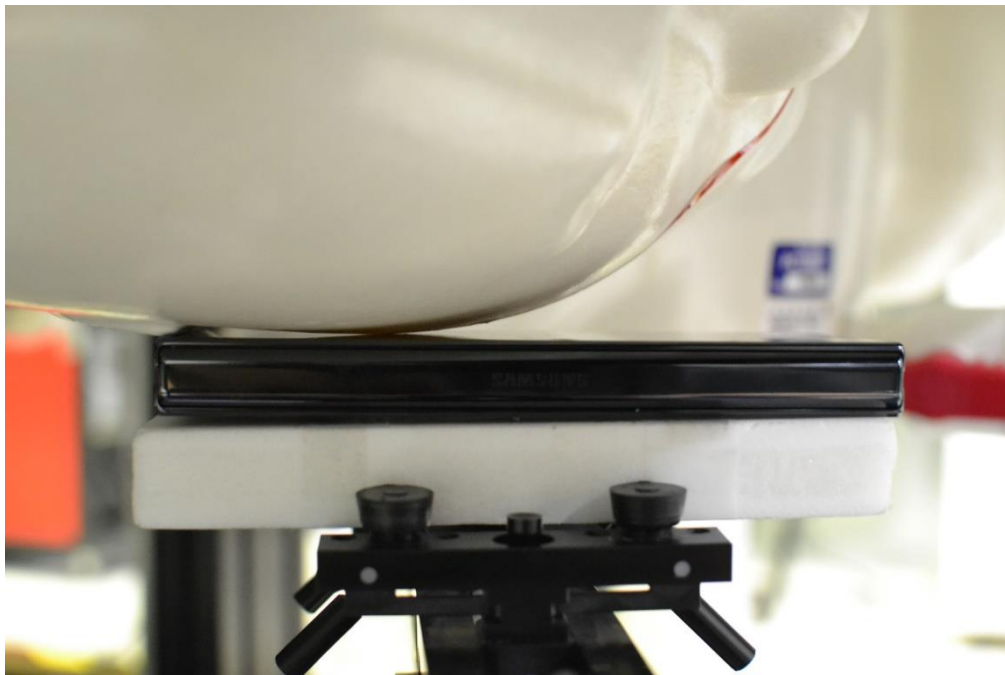
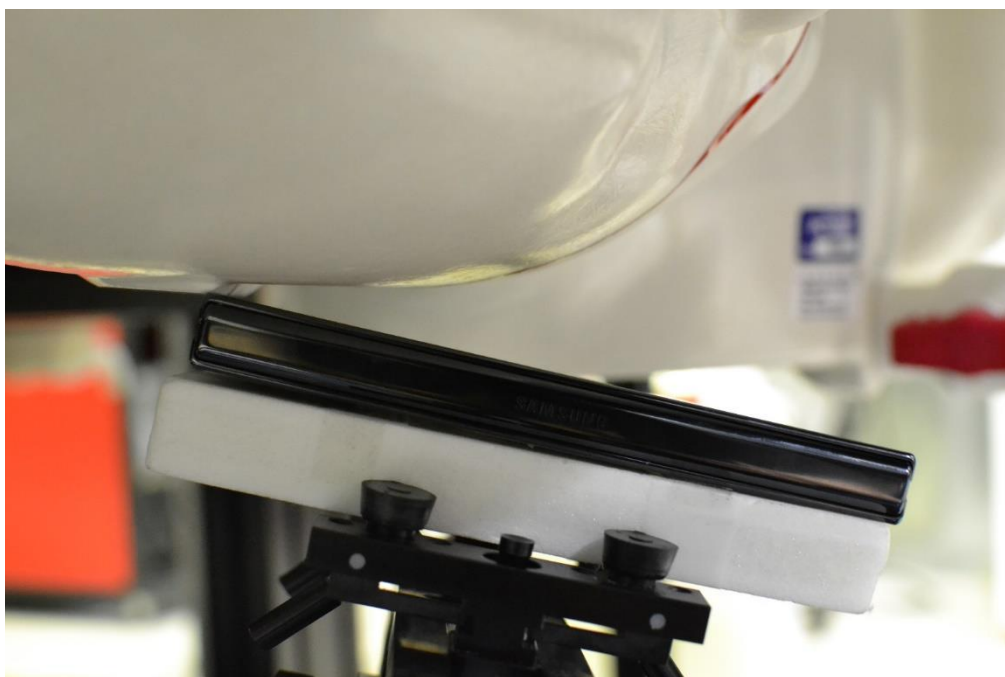


Figure E-4
Other Antenna Locations – Open Configuration (UMPC)

FCC ID A3LSMF936U	SAR EVALUATION REPORT	Approved by: Technical Manager
DUT Type: Portable Handset		APPENDIX E: Page 3 of 20

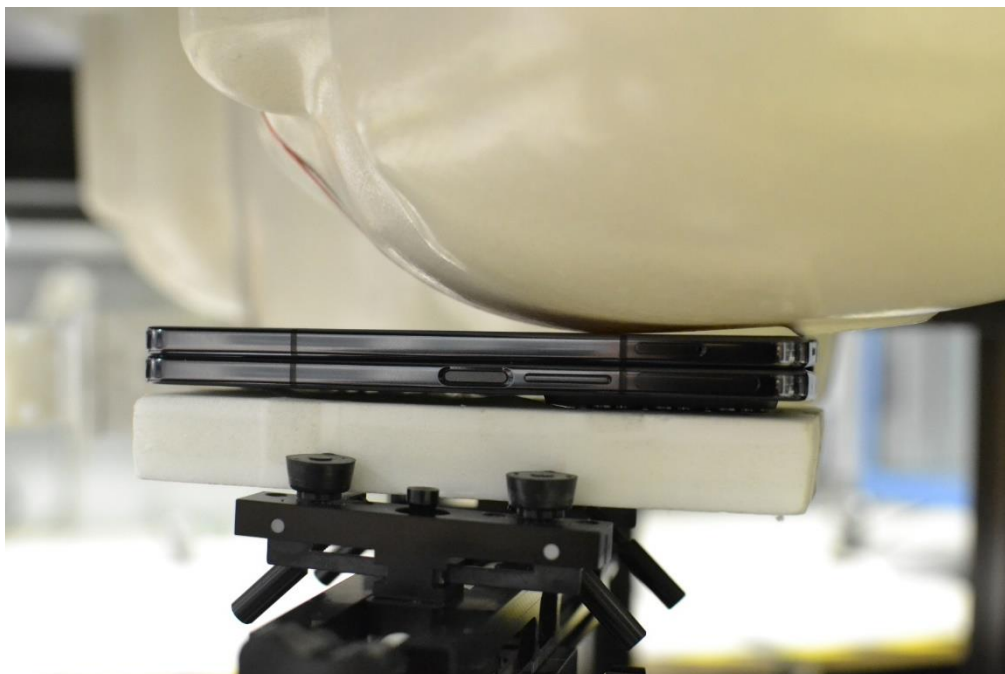


SAR Test Setup Photo 1– Closed Configuration (Handset), Head, Right Cheek, 0 mm

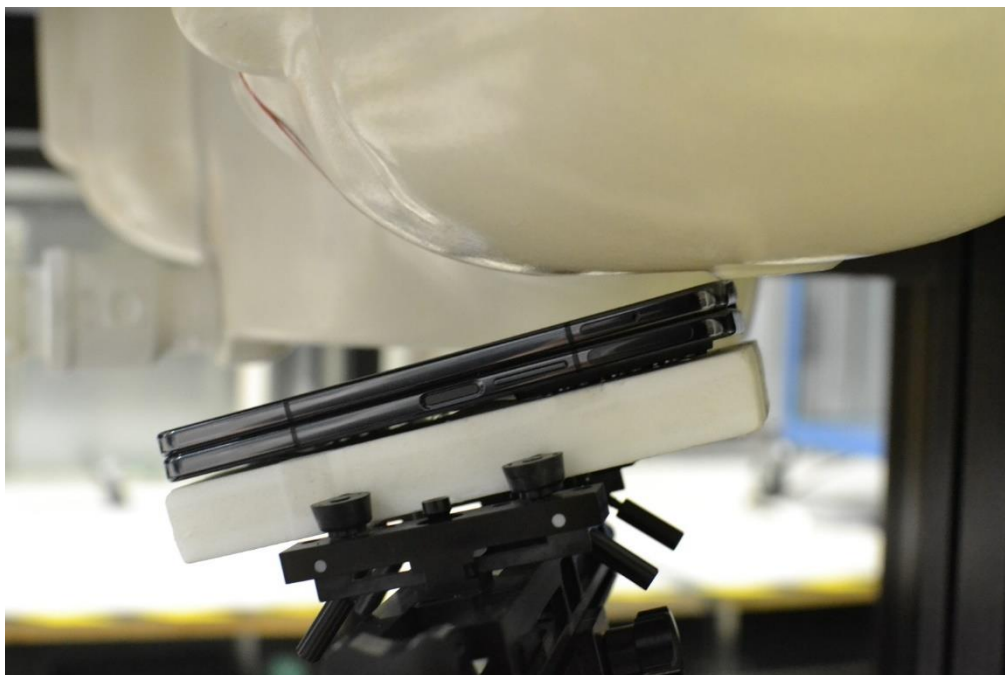


SAR Test Setup Photo 2– Closed Configuration (Handset), Head, Right Tilt, 0 mm

FCC ID A3LSMF936U	SAR EVALUATION REPORT	Approved by: Technical Manager
DUT Type: Portable Handset		APPENDIX E: Page 4 of 20

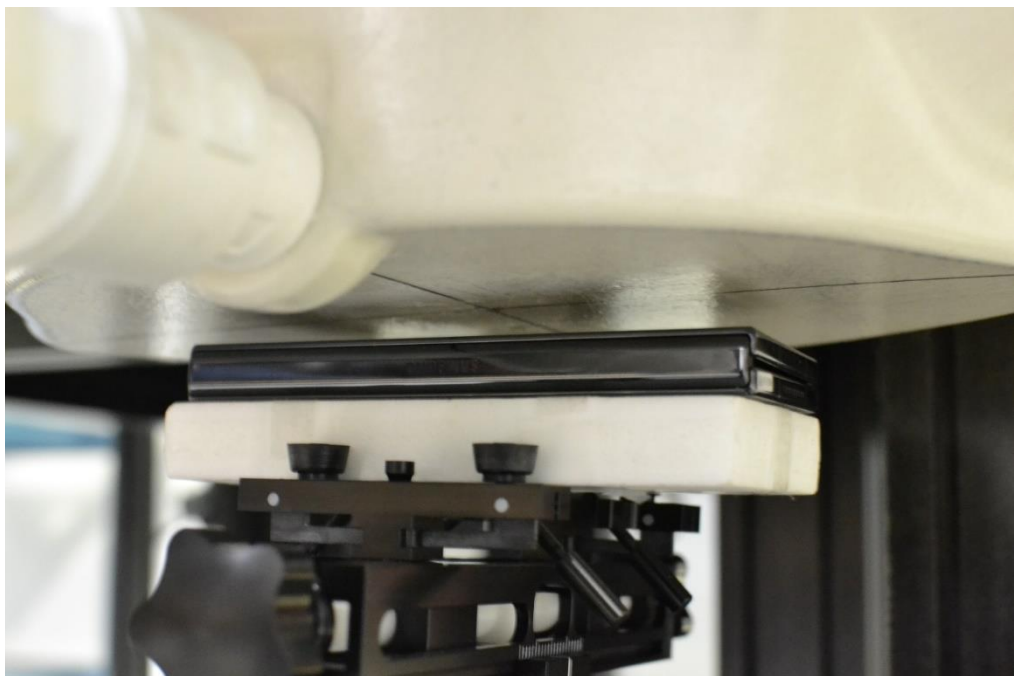


SAR Test Setup Photo 3– Closed Configuration (Handset), Head, Left Cheek, 0 mm

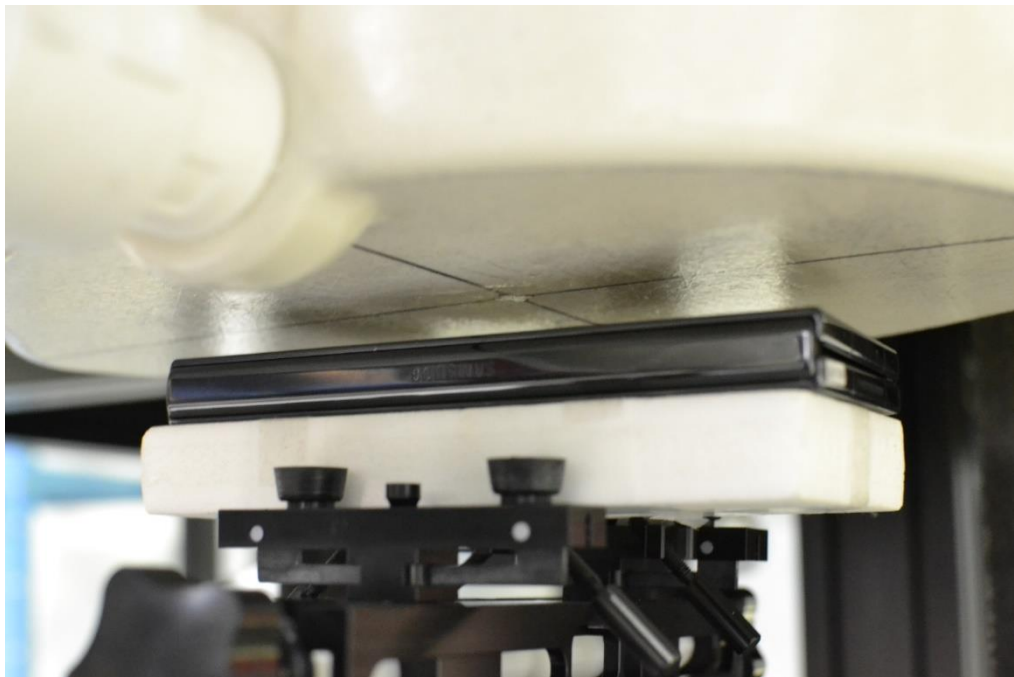


SAR Test Setup Photo 4– Closed Configuration (Handset), Head, Left Tilt, 0 mm

FCC ID A3LSMF936U	SAR EVALUATION REPORT	Approved by: Technical Manager
DUT Type: Portable Handset		APPENDIX E: Page 5 of 20

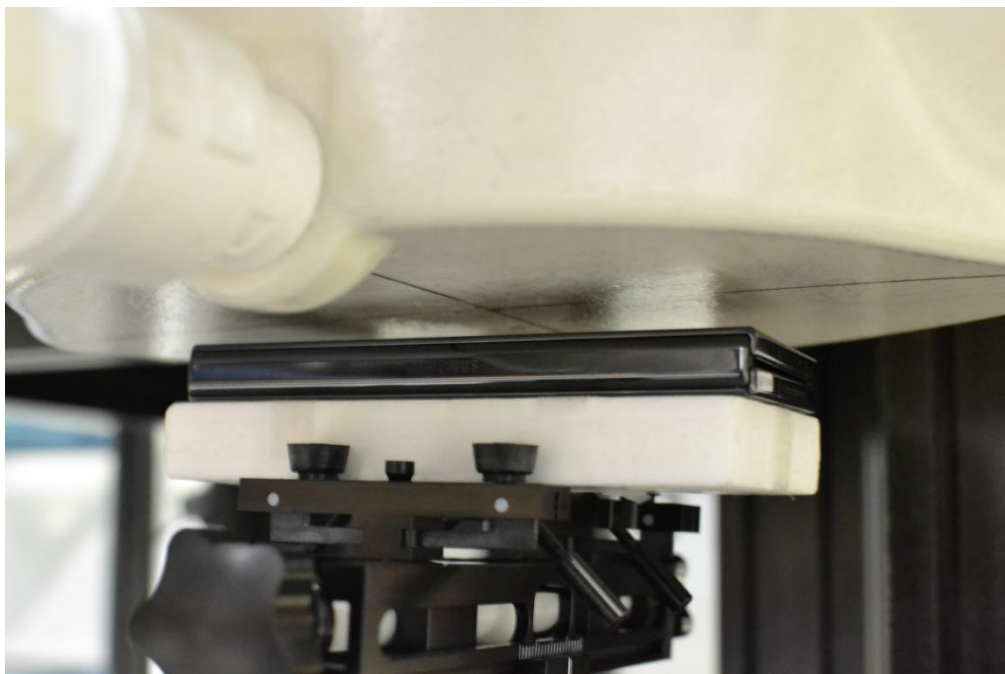


SAR Test Setup Photo 5– Closed Configuration (Handset), Body-worn, Back Side, 15 mm



SAR Test Setup Photo 6– Closed Configuration (Handset), Phablet, Back Side, 12 mm

FCC ID A3LSMF936U	SAR EVALUATION REPORT	Approved by: Technical Manager
DUT Type: Portable Handset		APPENDIX E: Page 6 of 20



SAR Test Setup Photo 7– Closed Configuration (Handset), Hotspot, Back Side, 10 mm



SAR Test Setup Photo 8– Closed Configuration (Handset), Phablet, Back Side, 0 mm

FCC ID A3LSMF936U	SAR EVALUATION REPORT	Approved by: Technical Manager
DUT Type: Portable Handset		APPENDIX E: Page 7 of 20

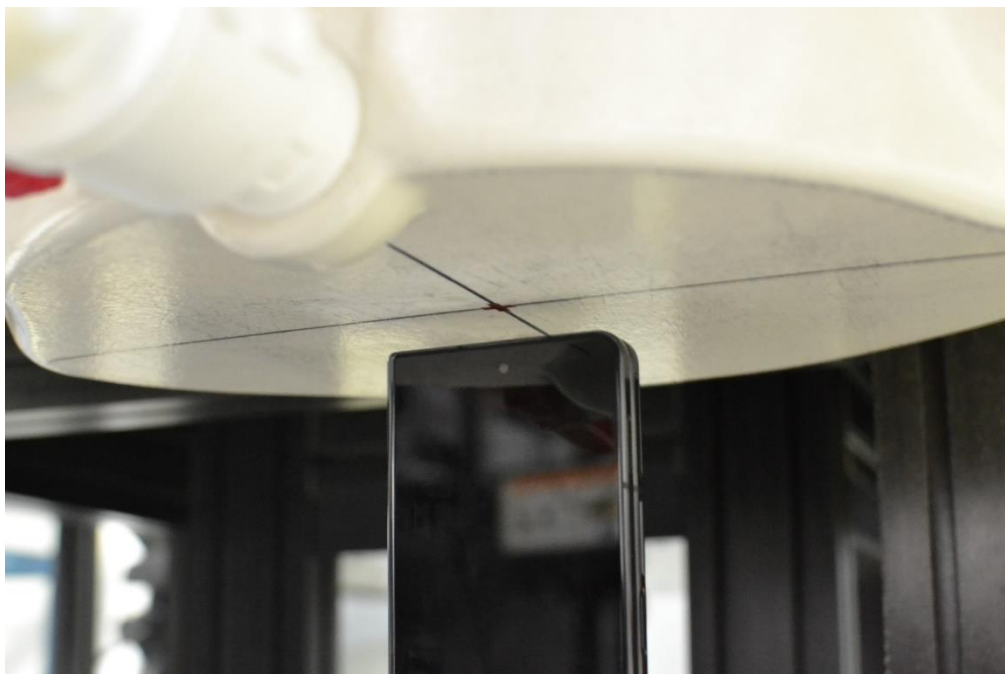


SAR Test Setup Photo 9– Closed Configuration (Handset), Hotspot, Front Side, 10 mm

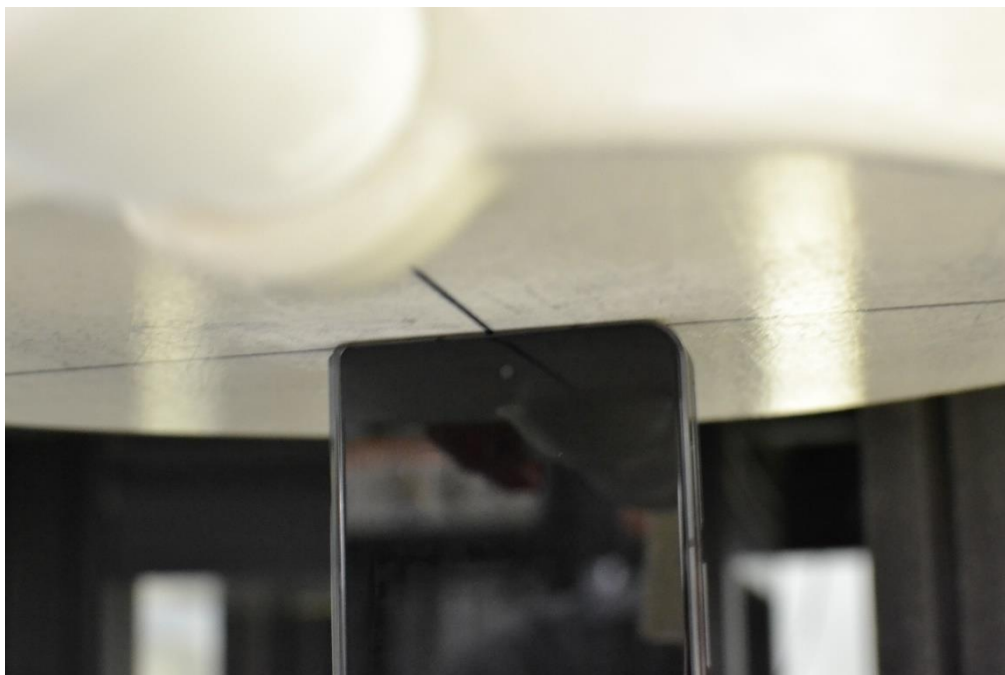


SAR Test Setup Photo 10– Closed Configuration (Handset), Phablet, Front Side, 0 mm

FCC ID A3LSMF936U	SAR EVALUATION REPORT	Approved by: Technical Manager
DUT Type: Portable Handset		APPENDIX E: Page 8 of 20

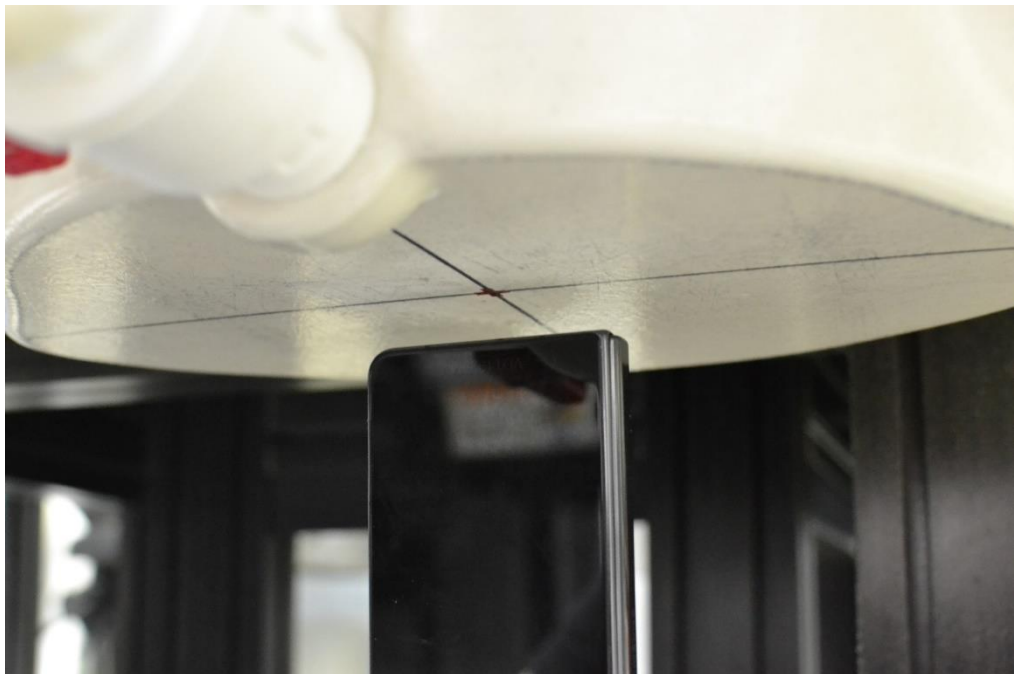


SAR Test Setup Photo 11– Closed Configuration (Handset), Hotspot, Top Edge, 10 mm

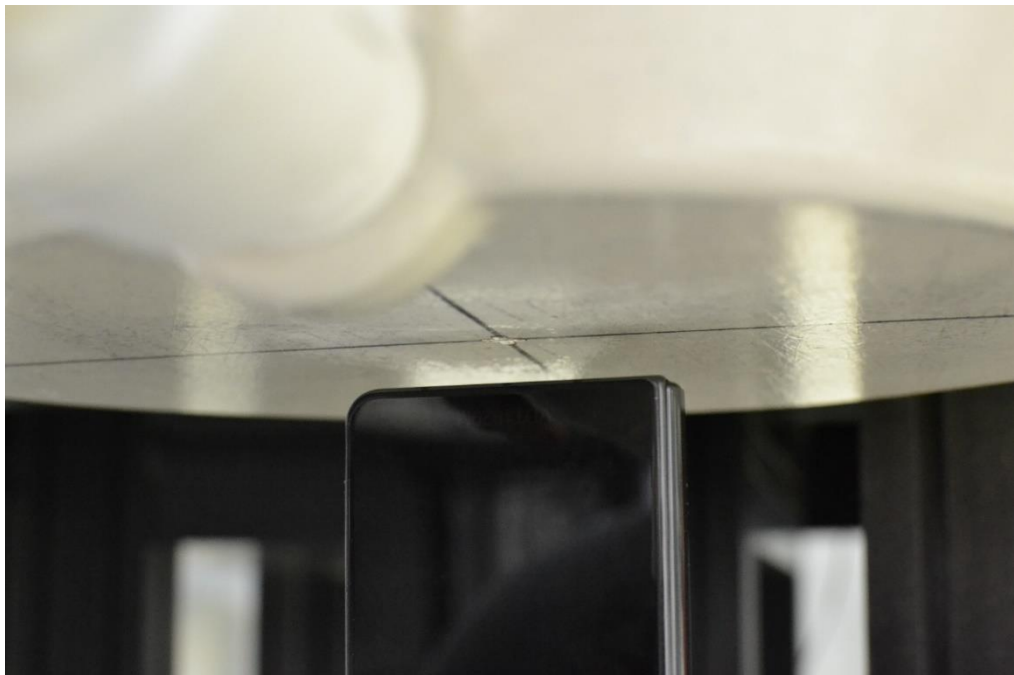


SAR Test Setup Photo 12– Closed Configuration (Handset), Phablet, Top Edge, 0 mm

FCC ID A3LSMF936U	SAR EVALUATION REPORT	Approved by: Technical Manager
DUT Type: Portable Handset		APPENDIX E: Page 9 of 20

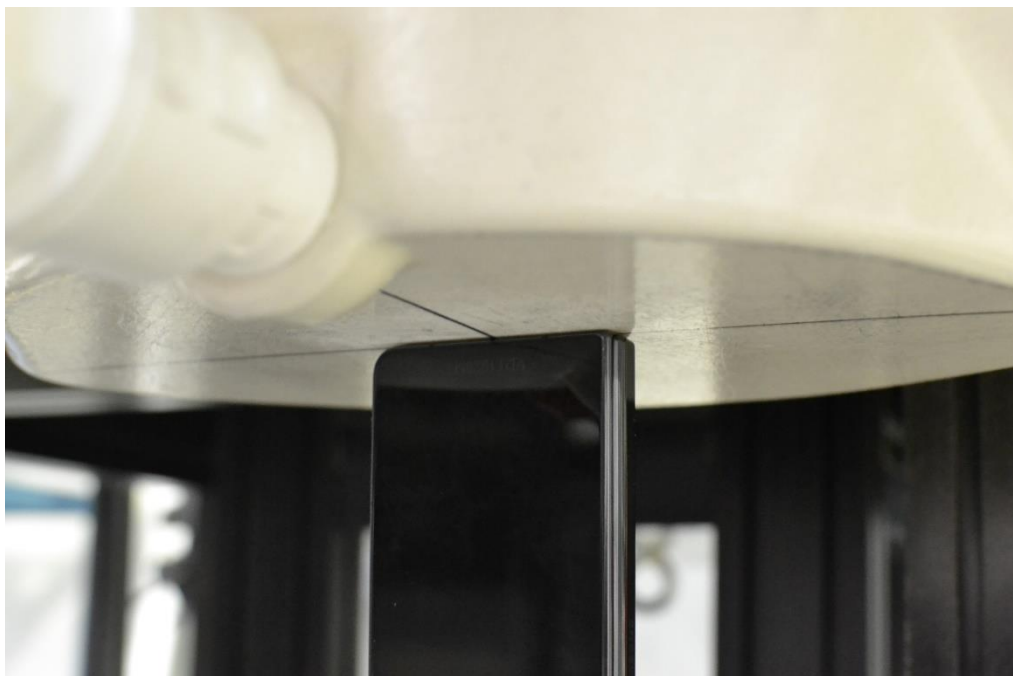


SAR Test Setup Photo 13– Closed Configuration (Handset), Phablet, Bottom Edge, 14 mm

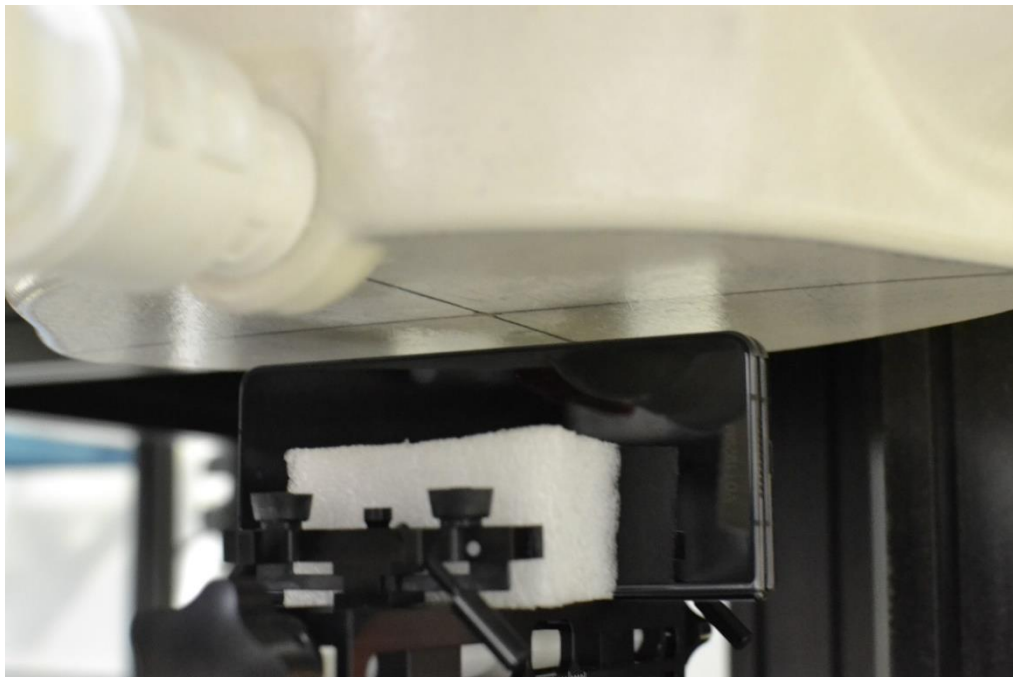


SAR Test Setup Photo 14– Closed Configuration (Handset), Hotspot, Bottom Edge, 10 mm

FCC ID A3LSMF936U	SAR EVALUATION REPORT	Approved by: Technical Manager
DUT Type: Portable Handset		APPENDIX E: Page 10 of 20

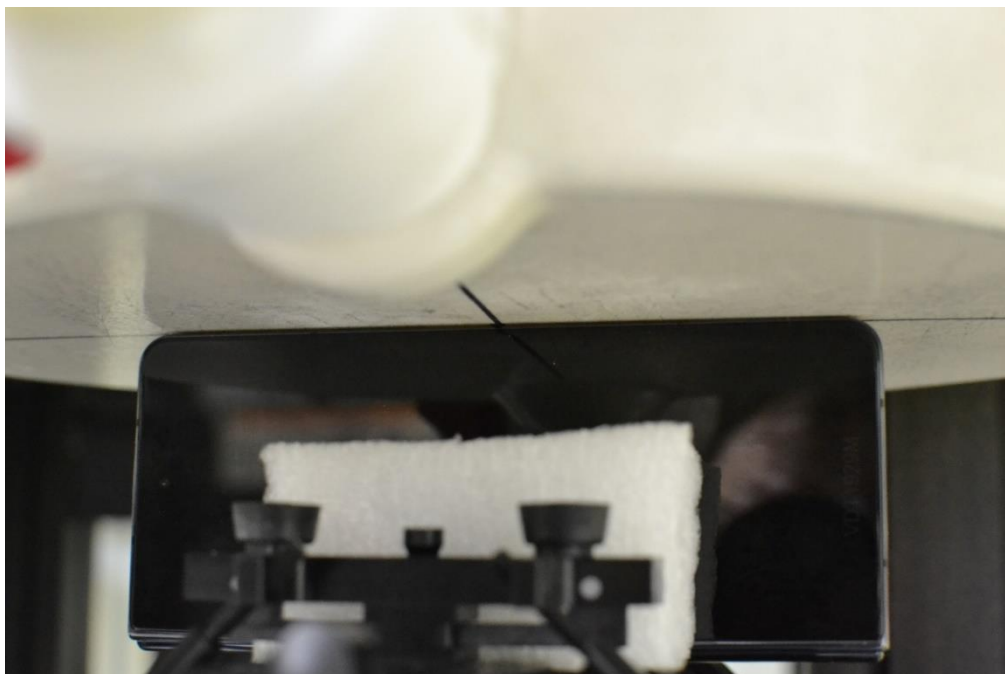


SAR Test Setup Photo 15– Closed Configuration (Handset), Phablet, Bottom Edge, 0 mm

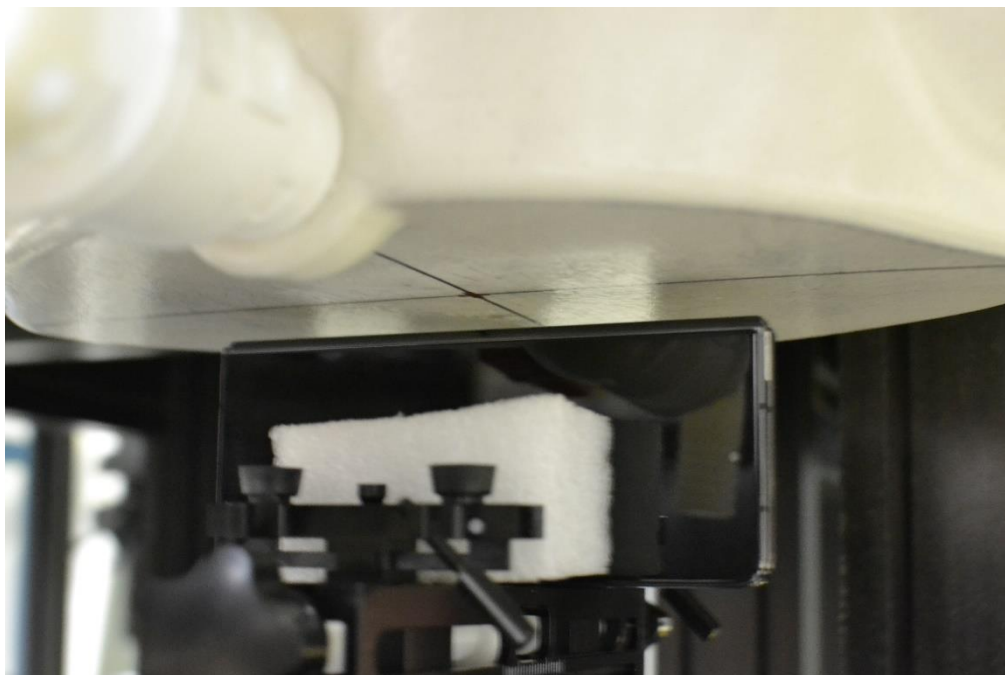


SAR Test Setup Photo 16– Closed Configuration (Handset), Hotspot, Right Edge, 10 mm

FCC ID A3LSMF936U	SAR EVALUATION REPORT	Approved by: Technical Manager
DUT Type: Portable Handset		APPENDIX E: Page 11 of 20

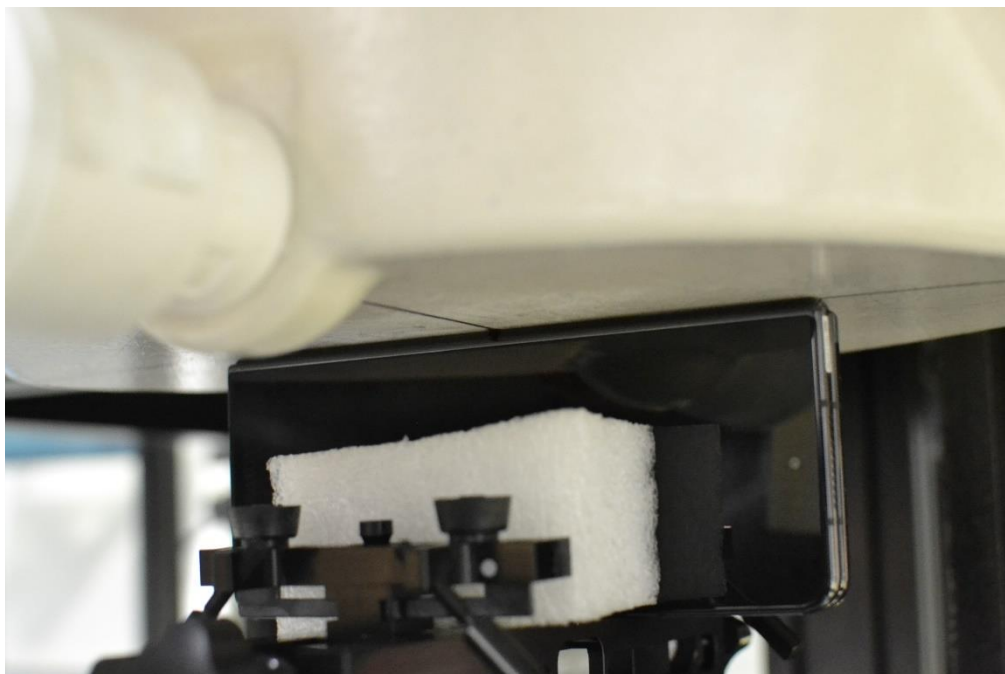


SAR Test Setup Photo 17– Closed Configuration (Handset), Phablet, Right Edge, 0 mm



SAR Test Setup Photo 18– Closed Configuration (Handset), Hotspot, Left Edge, 10 mm

FCC ID A3LSMF936U	SAR EVALUATION REPORT	Approved by: Technical Manager
DUT Type: Portable Handset		APPENDIX E: Page 12 of 20



SAR Test Setup Photo 19– Closed Configuration (Handset), Phablet, Left Edge, 0 mm



SAR Test Setup Photo 20– Open Configuration (UMPC), UMPC Body/Extremity, Back Side, 14 mm

FCC ID A3LSMF936U	SAR EVALUATION REPORT	Approved by: Technical Manager
DUT Type: Portable Handset		APPENDIX E: Page 13 of 20



SAR Test Setup Photo 21– Open Configuration (UMPC), UMPC Body, Back Side, 10 mm



SAR Test Setup Photo 22– Open Configuration (UMPC), UMPC Extremity, Back Side, 0 mm

FCC ID A3LSMF936U	SAR EVALUATION REPORT	Approved by: Technical Manager
DUT Type: Portable Handset		APPENDIX E: Page 14 of 20



SAR Test Setup Photo 23– Open Configuration (UMPC), UMPC Body/Extremity, Front Side, 12 mm

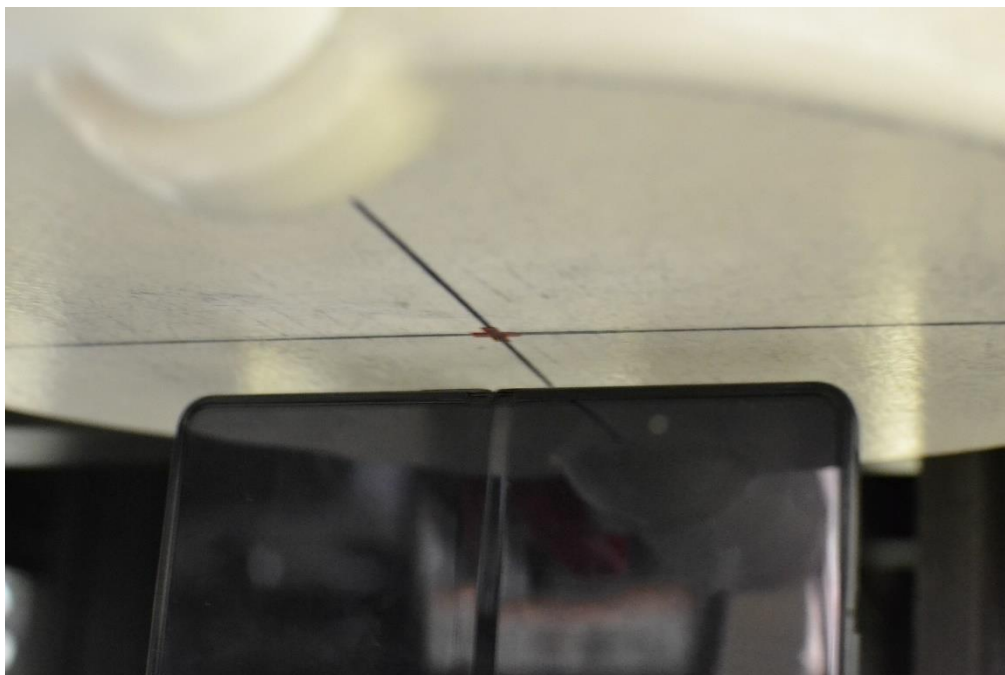


SAR Test Setup Photo 24– Open Configuration (UMPC), UMPC Body, Front Side, 10 mm

FCC ID A3LSMF936U	SAR EVALUATION REPORT	Approved by: Technical Manager
DUT Type: Portable Handset		APPENDIX E: Page 15 of 20



SAR Test Setup Photo 25– Open Configuration (UMPC), UMPC Extremity, Front Side, 0 mm

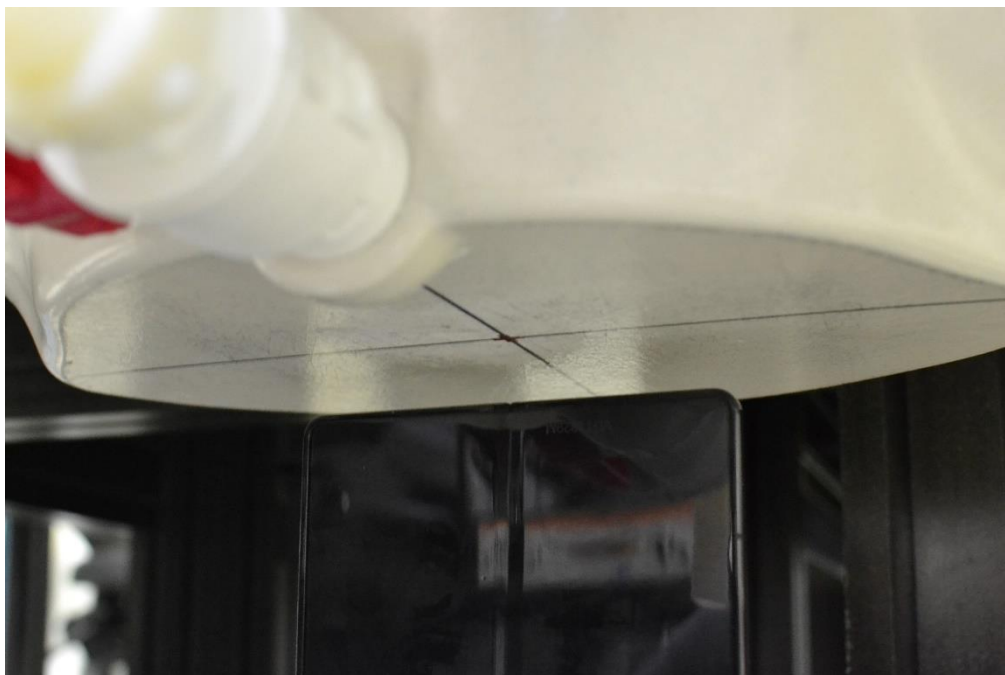


SAR Test Setup Photo 26– Open Configuration (UMPC), UMPC Body, Top Edge, 10 mm

FCC ID A3LSMF936U	SAR EVALUATION REPORT	Approved by: Technical Manager
DUT Type: Portable Handset		APPENDIX E: Page 16 of 20

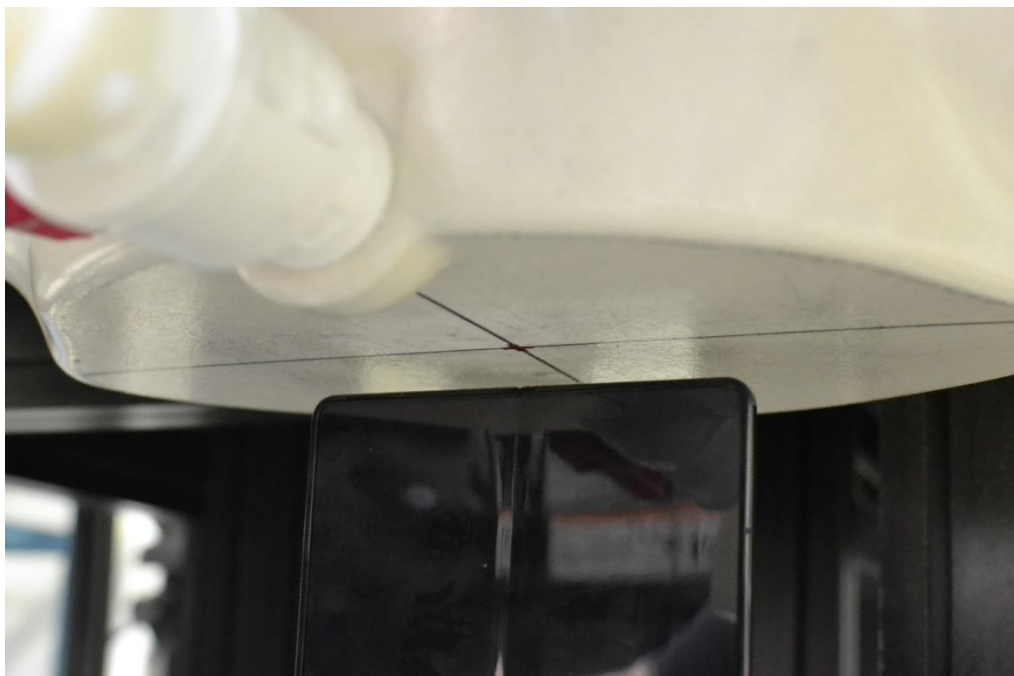


SAR Test Setup Photo 27– Open Configuration (UMPC), UMPC Extremity, Top Edge, 0 mm

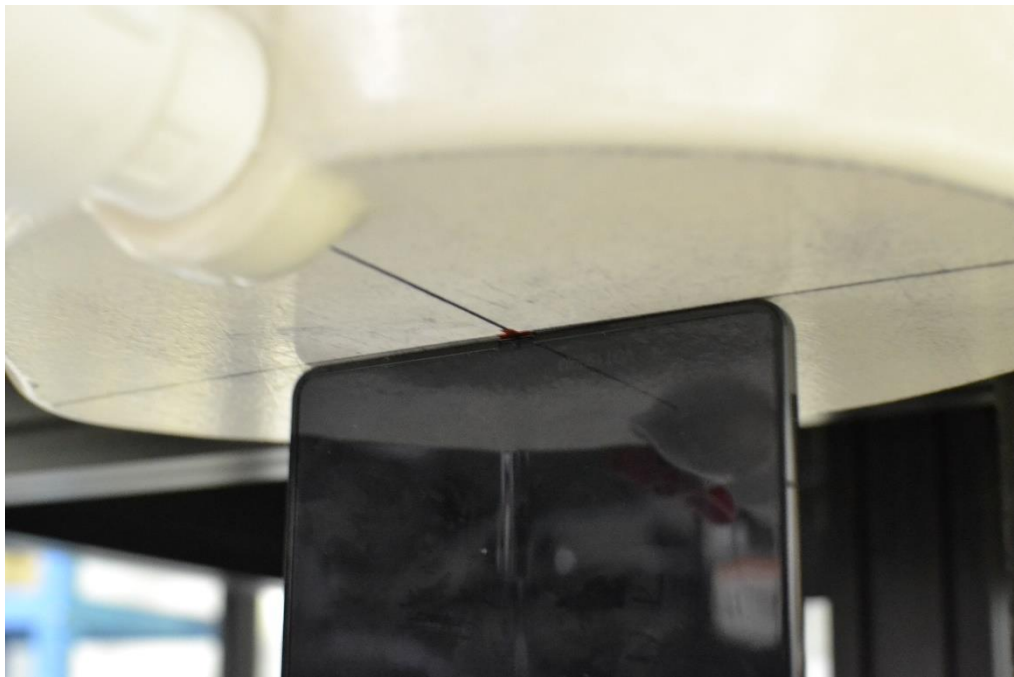


SAR Test Setup Photo 28– Open Configuration (UMPC), UMPC Body/Extremity, Bottom Edge, 18 mm

FCC ID A3LSMF936U	SAR EVALUATION REPORT	Approved by: Technical Manager
DUT Type: Portable Handset		APPENDIX E: Page 17 of 20

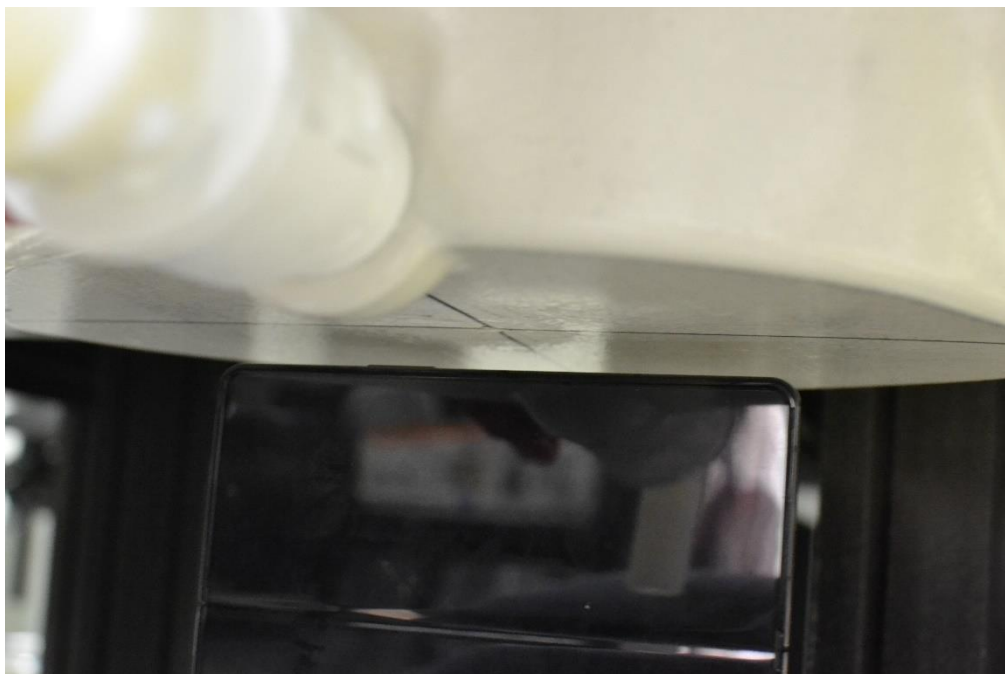


SAR Test Setup Photo 29– Open Configuration (UMPC), UMPC Body, Bottom Edge, 10 mm



SAR Test Setup Photo 30– Open Configuration (UMPC), UMPC Extremity, Bottom Edge, 0 mm

FCC ID A3LSMF936U	SAR EVALUATION REPORT	Approved by: Technical Manager
DUT Type: Portable Handset		APPENDIX E: Page 18 of 20



SAR Test Setup Photo 31– Open Configuration (UMPC), UMPC Body, Right Edge, 10 mm



SAR Test Setup Photo 32– Open Configuration (UMPC), UMPC Extremity, Right Edge, 0 mm

FCC ID A3LSMF936U	SAR EVALUATION REPORT	Approved by: Technical Manager
DUT Type: Portable Handset		APPENDIX E: Page 19 of 20



SAR Test Setup Photo 33– Closed Configuration (Handset) Horizontal and Vertical Reference Lines

FCC ID A3LSMF936U	SAR EVALUATION REPORT	Approved by: Technical Manager
DUT Type: Portable Handset		APPENDIX E: Page 20 of 20