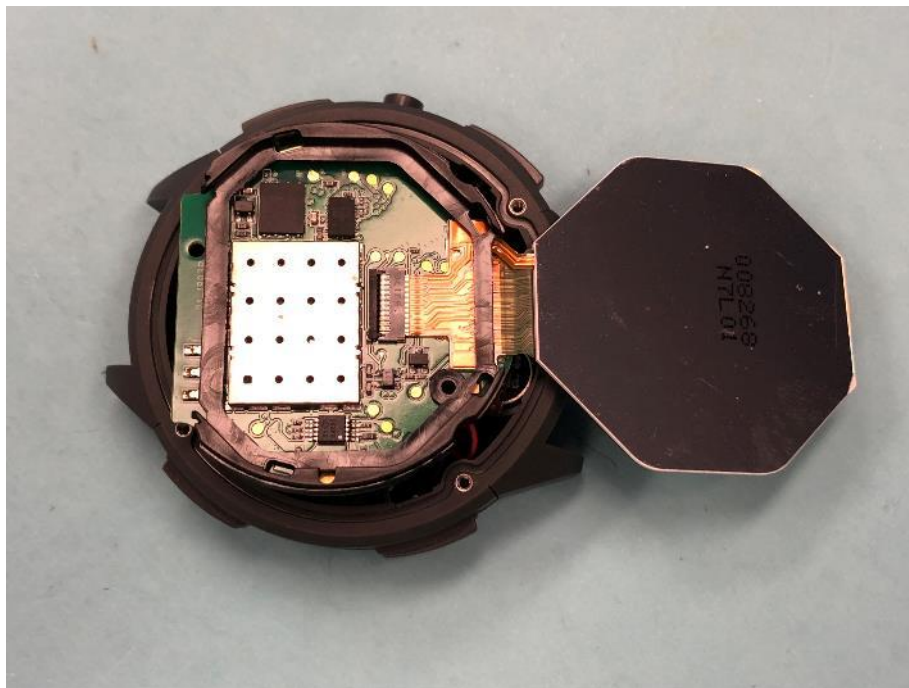


Appendix C

Date: 2018-12-11

Report Number: 60.790.18.050.01

Model No.: 75004PP03 FCC ID: 2AK9F-7500

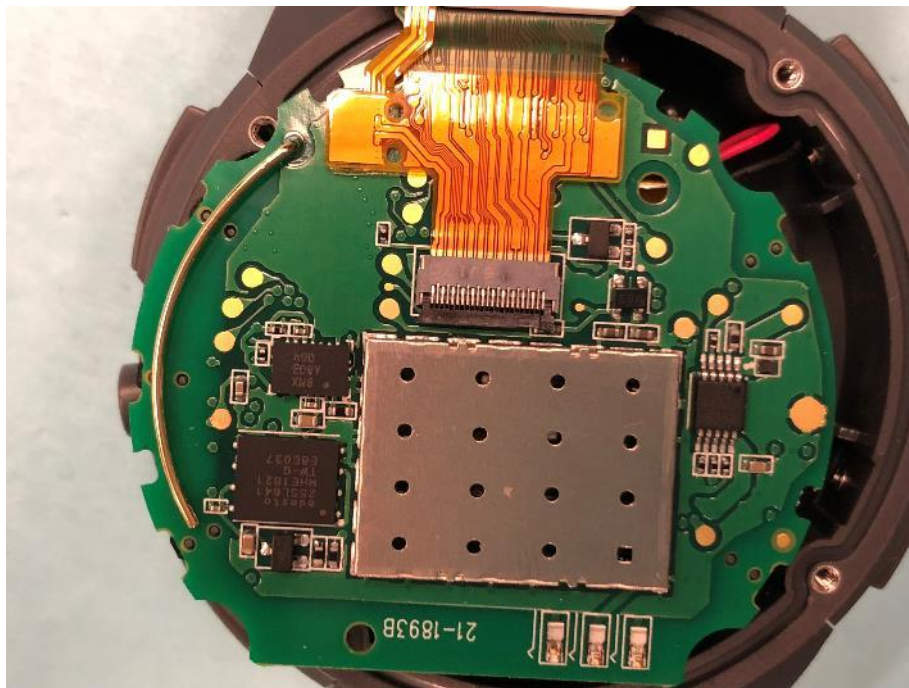
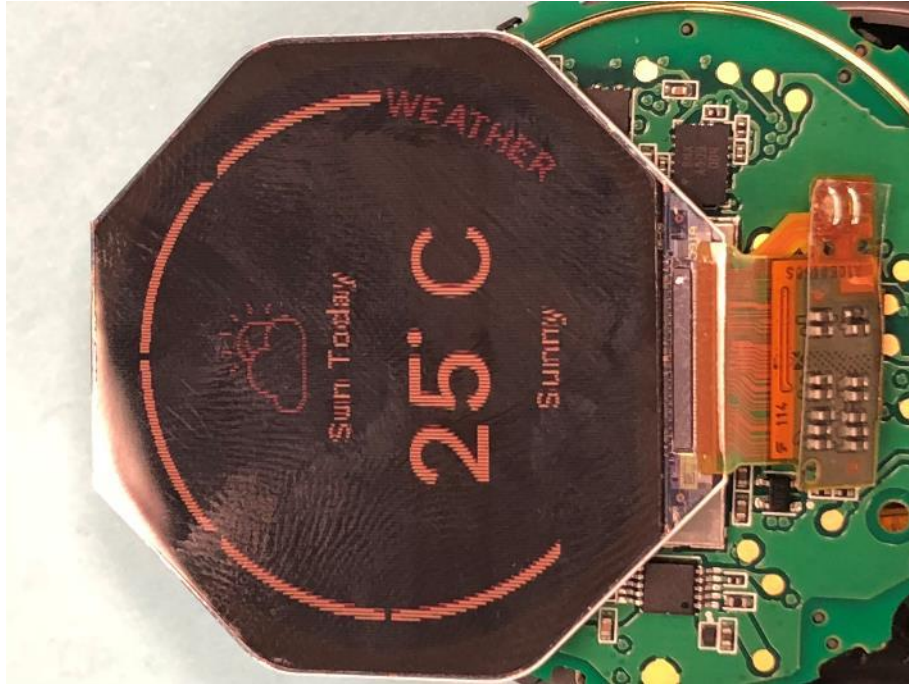


Appendix C

Date: 2018-12-11

Report Number: 60.790.18.050.01

Model No.: 75004PP03 FCC ID: 2AK9F-7500



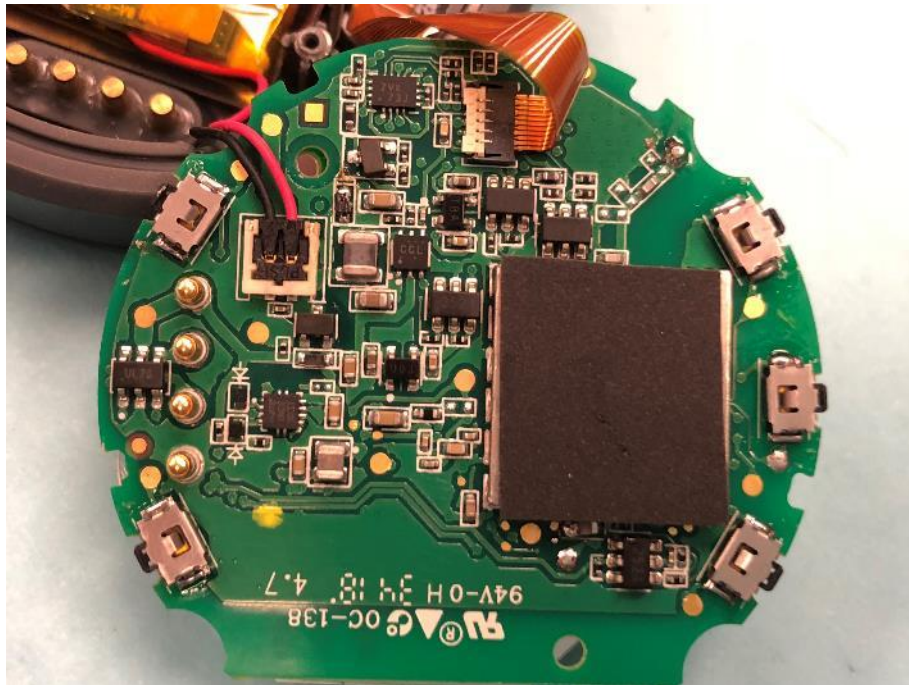
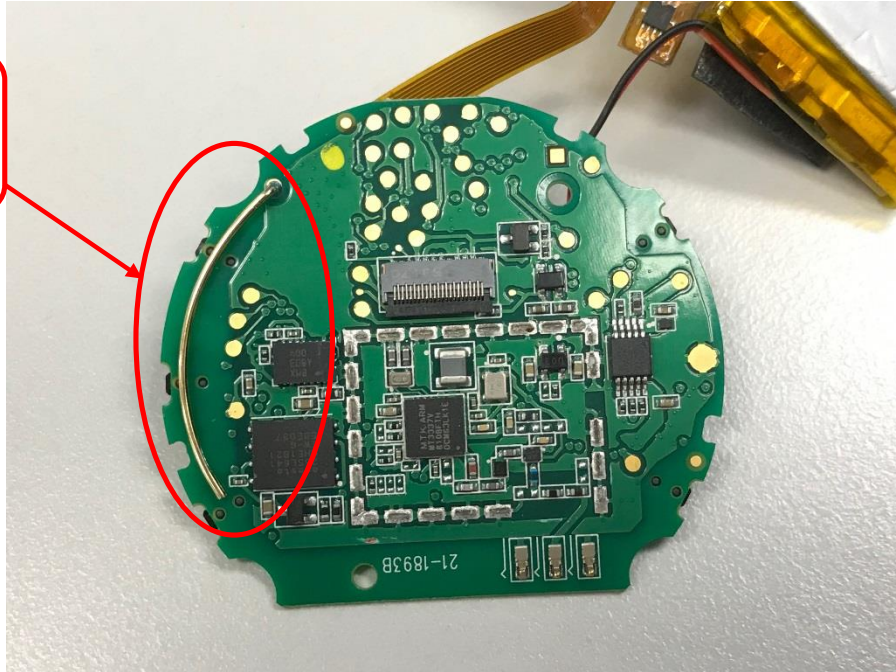
Appendix C

Date: 2018-12-11

Report Number: 60.790.18.050.01

Model No.: 75004PP03 FCC ID: 2AK9F-7500

BLE and ANT+ Antenna
2402-2480MHz

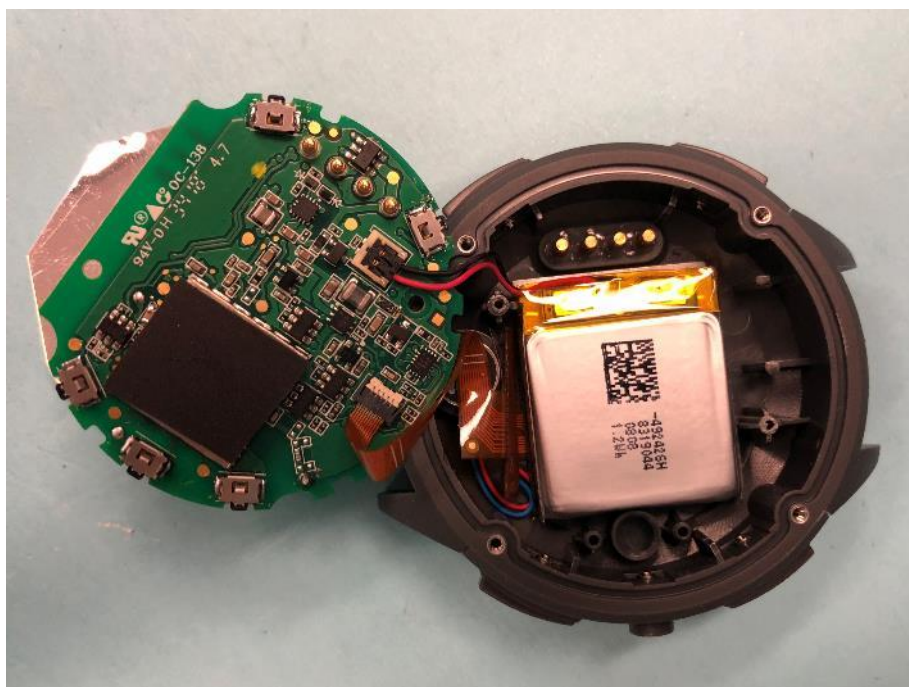
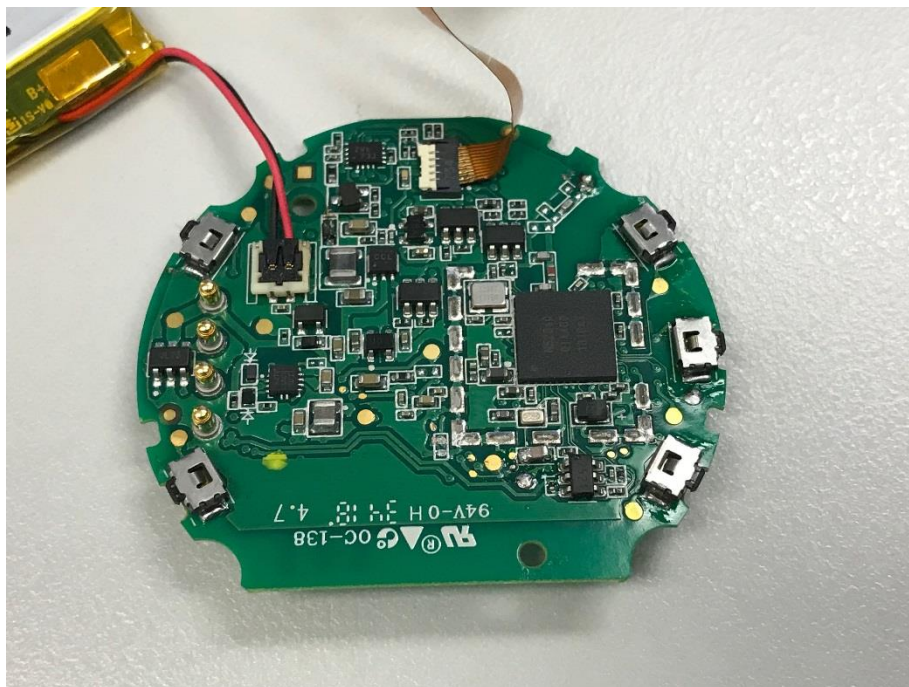


Appendix C

Date: 2018-12-11

Report Number: 60.790.18.050.01

Model No.: 75004PP03 FCC ID: 2AK9F-7500

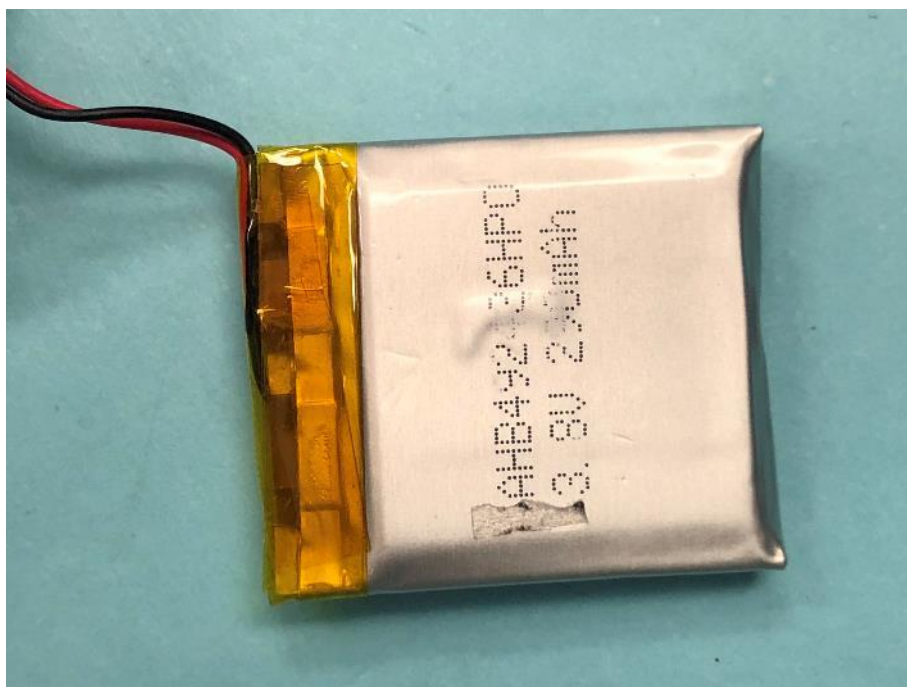
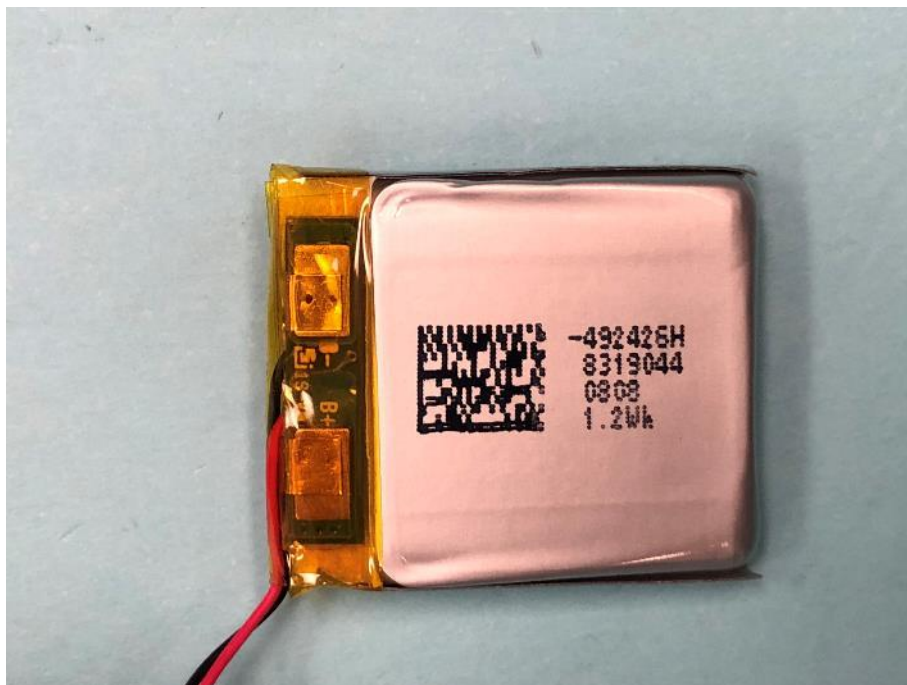


Appendix C

Date: 2018-12-11

Report Number: 60.790.18.050.01

Model No.: 75004PP03 FCC ID: 2AK9F-7500

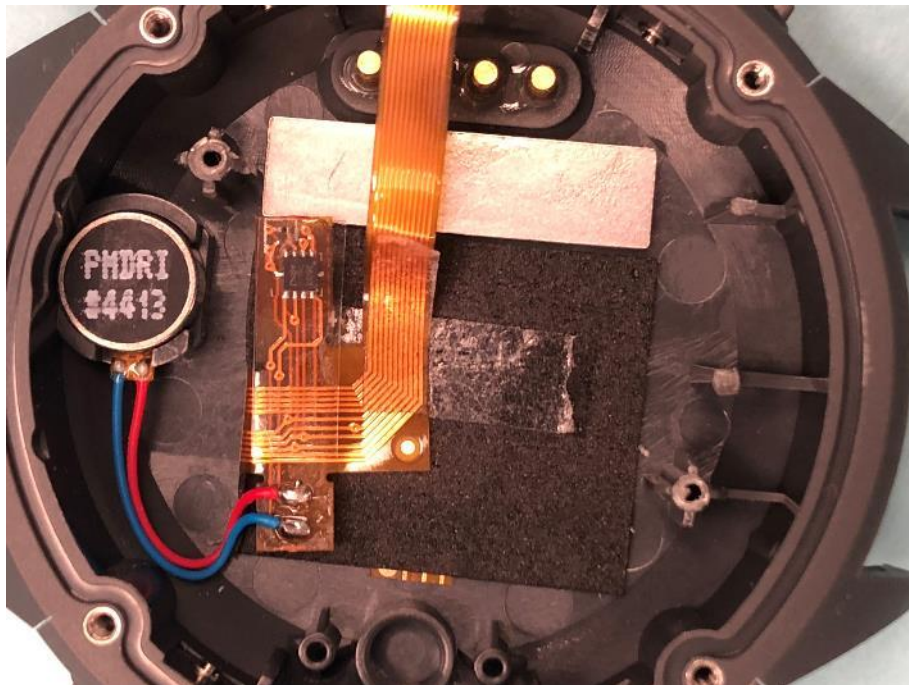


Appendix C

Date: 2018-12-11

Report Number: 60.790.18.050.01

Model No.: 75004PP03 FCC ID: 2AK9F-7500



Page 6 of 9

TÜV SÜD Hong Kong Ltd.

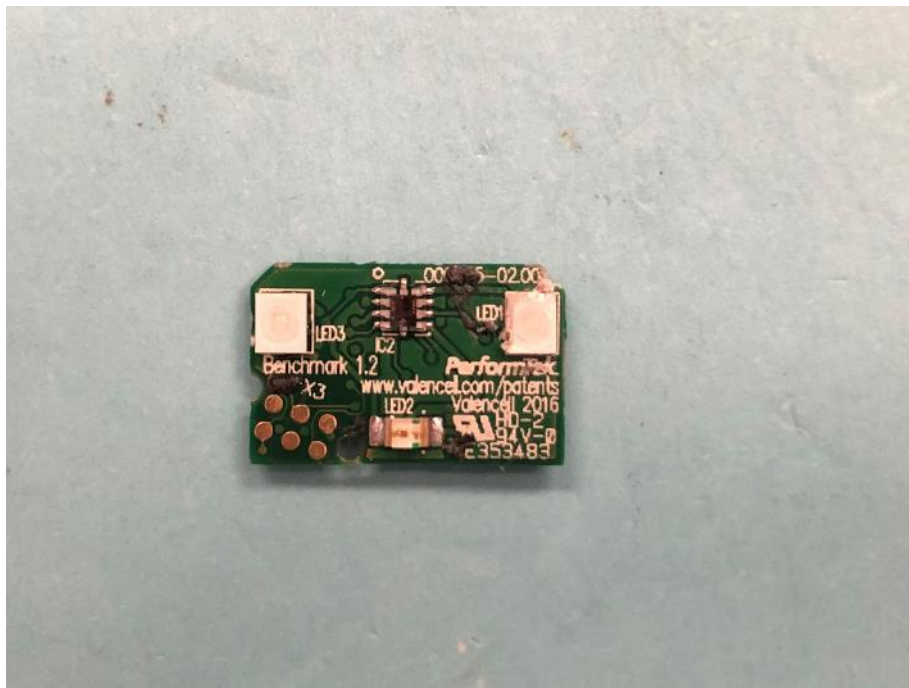
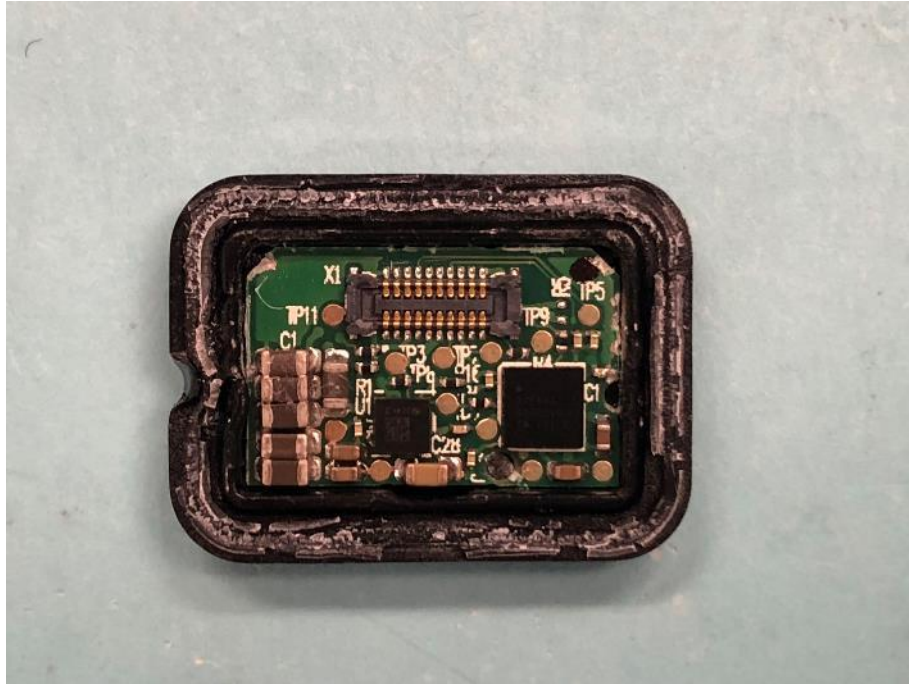
3/F, West Wing, Phase 2, 10 Science Park West Avenue, Hong Kong Science Park, Shatin, Hong Kong

Appendix C

Date: 2018-12-11

Report Number: 60.790.18.050.01

Model No.: 75004PP03 FCC ID: 2AK9F-7500

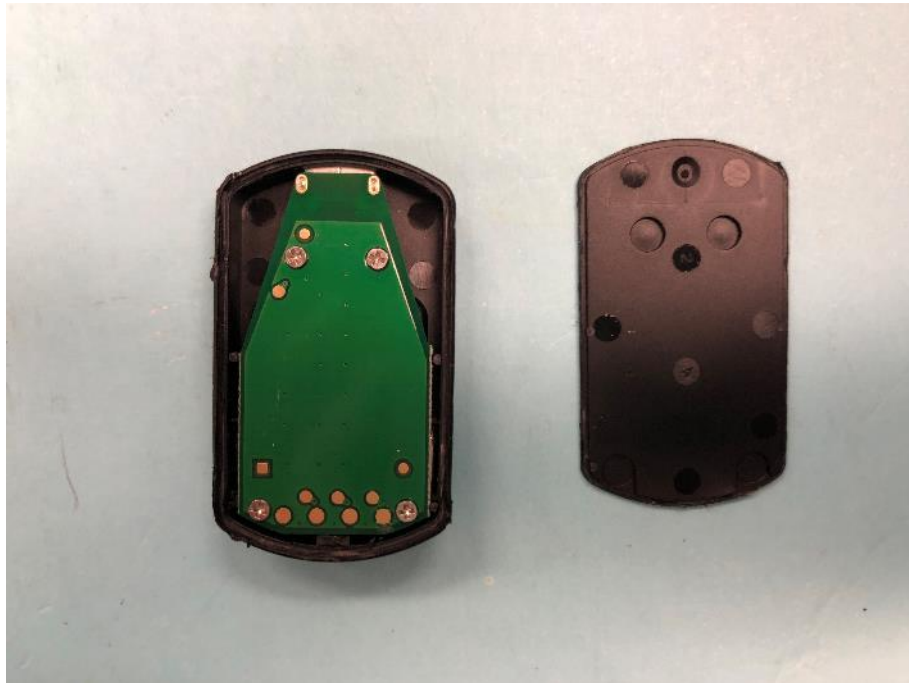


Appendix C

Date: 2018-12-11

Report Number: 60.790.18.050.01

Model No.: 75004PP03 FCC ID: 2AK9F-7500



Appendix C

Date: 2018-12-11

Report Number: 60.790.18.050.01

Model No.: 75004PP03 FCC ID: 2AK9F-7500

