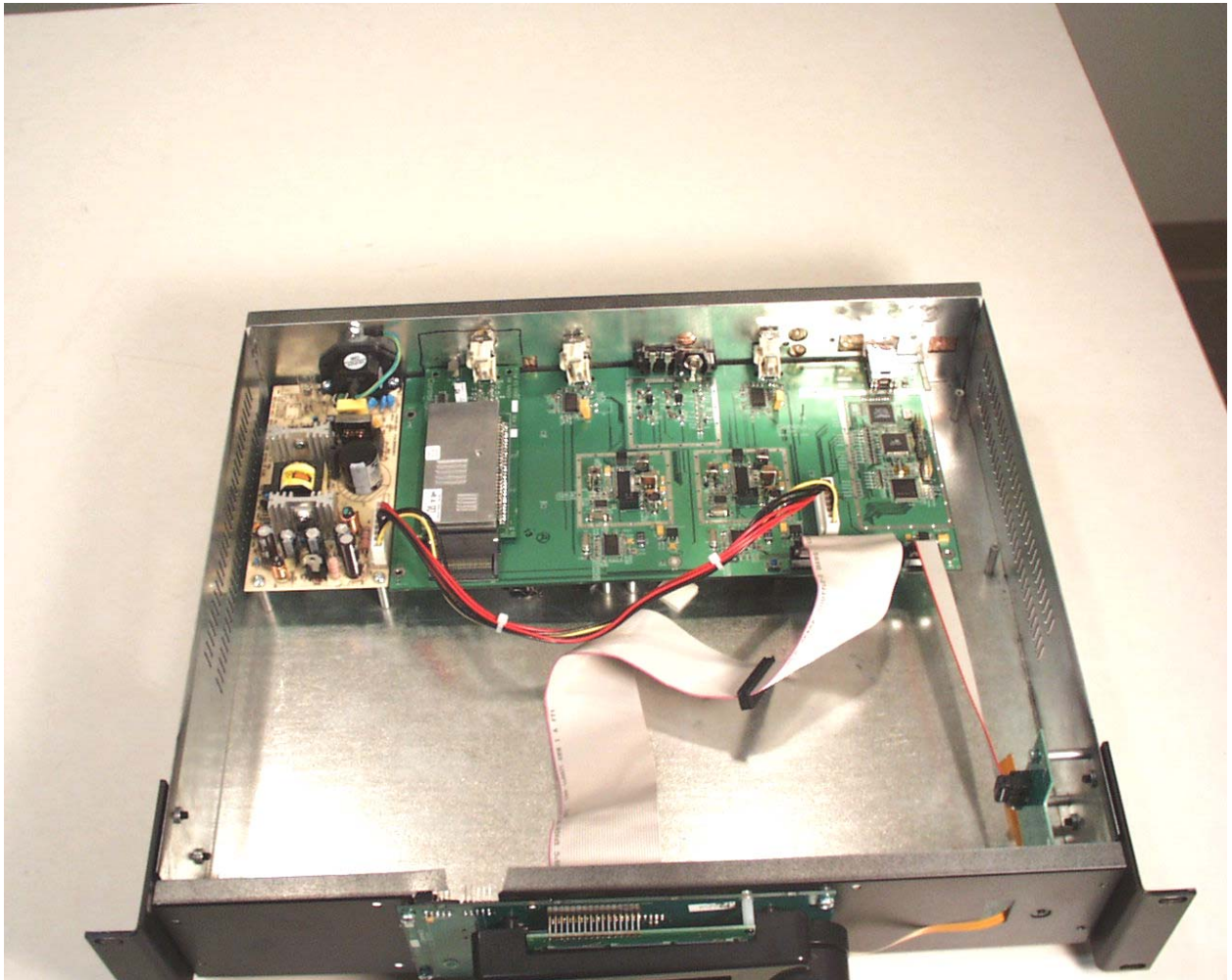
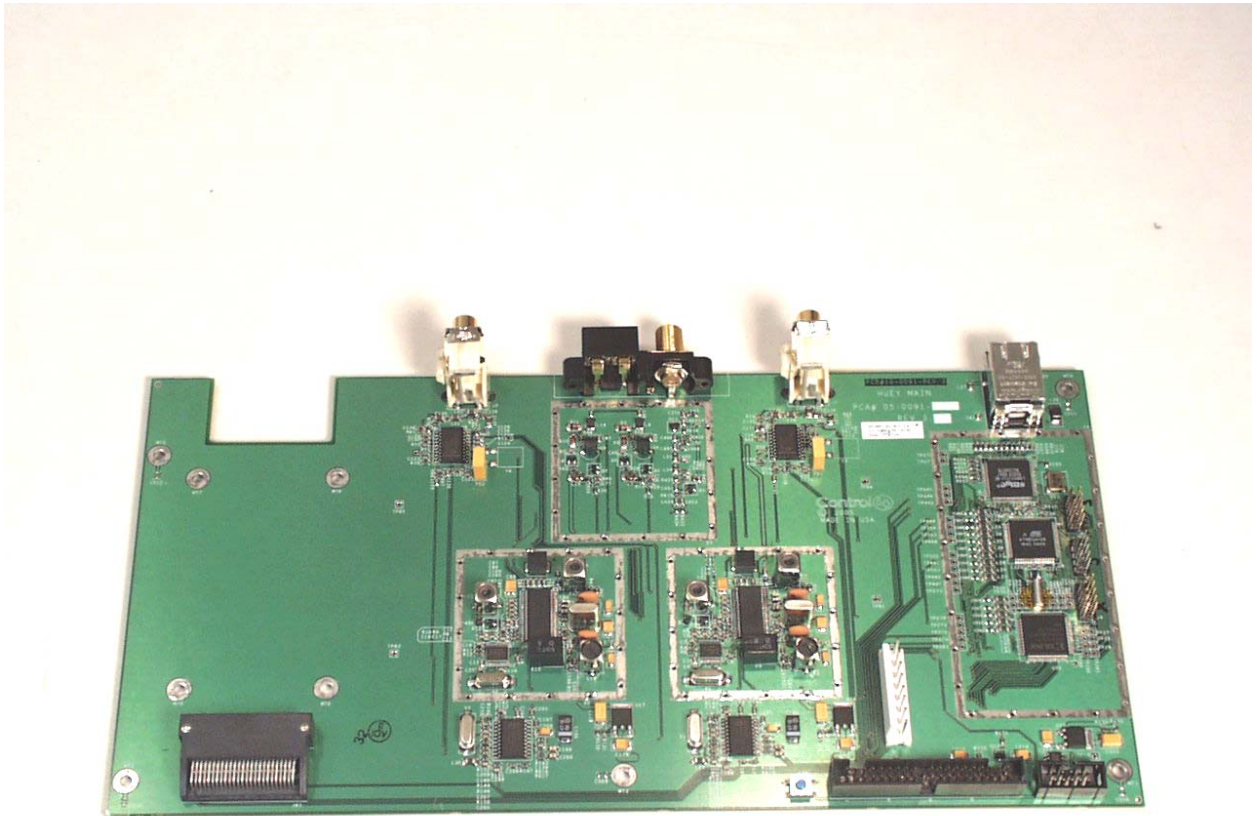


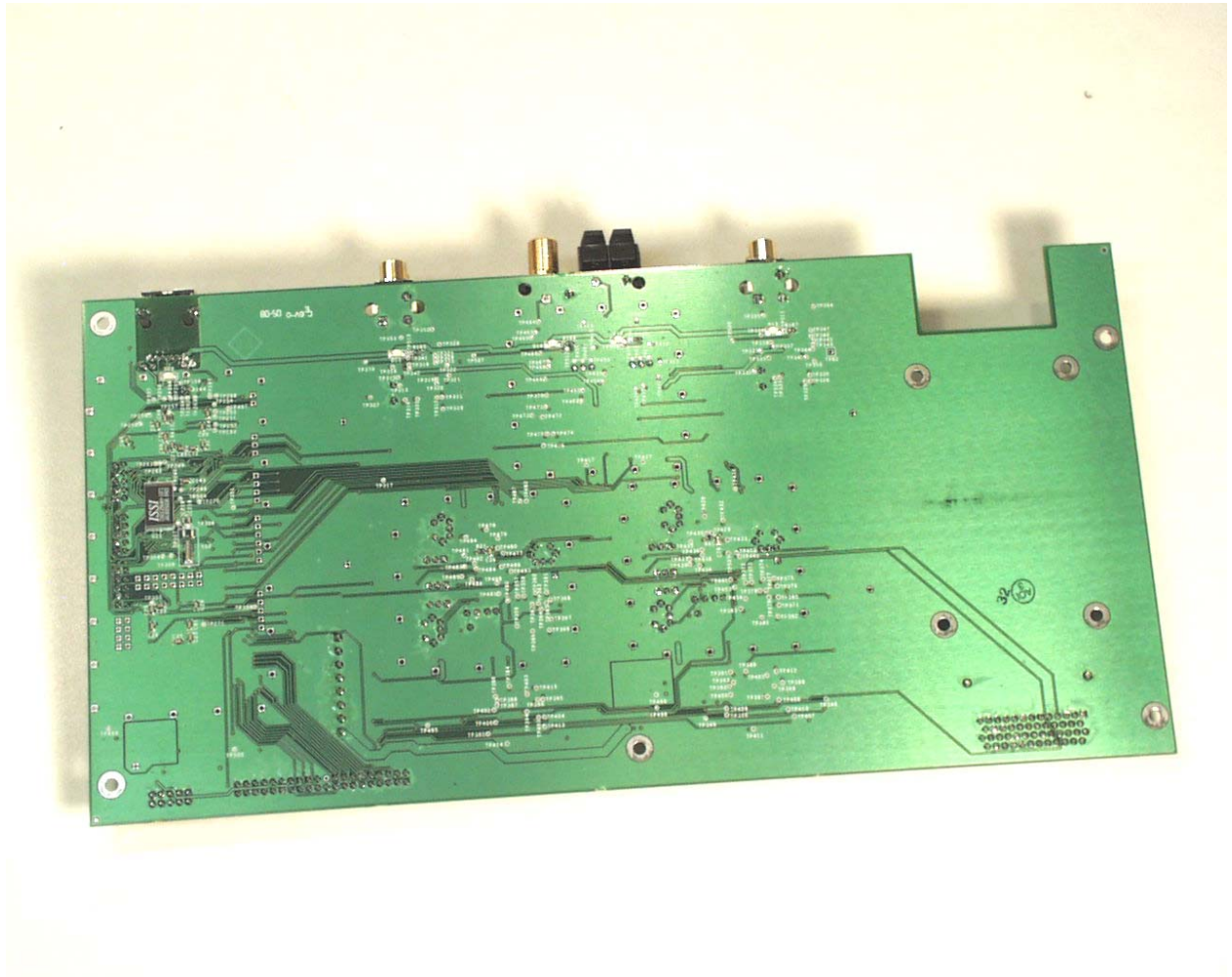
Internal View of the EUT



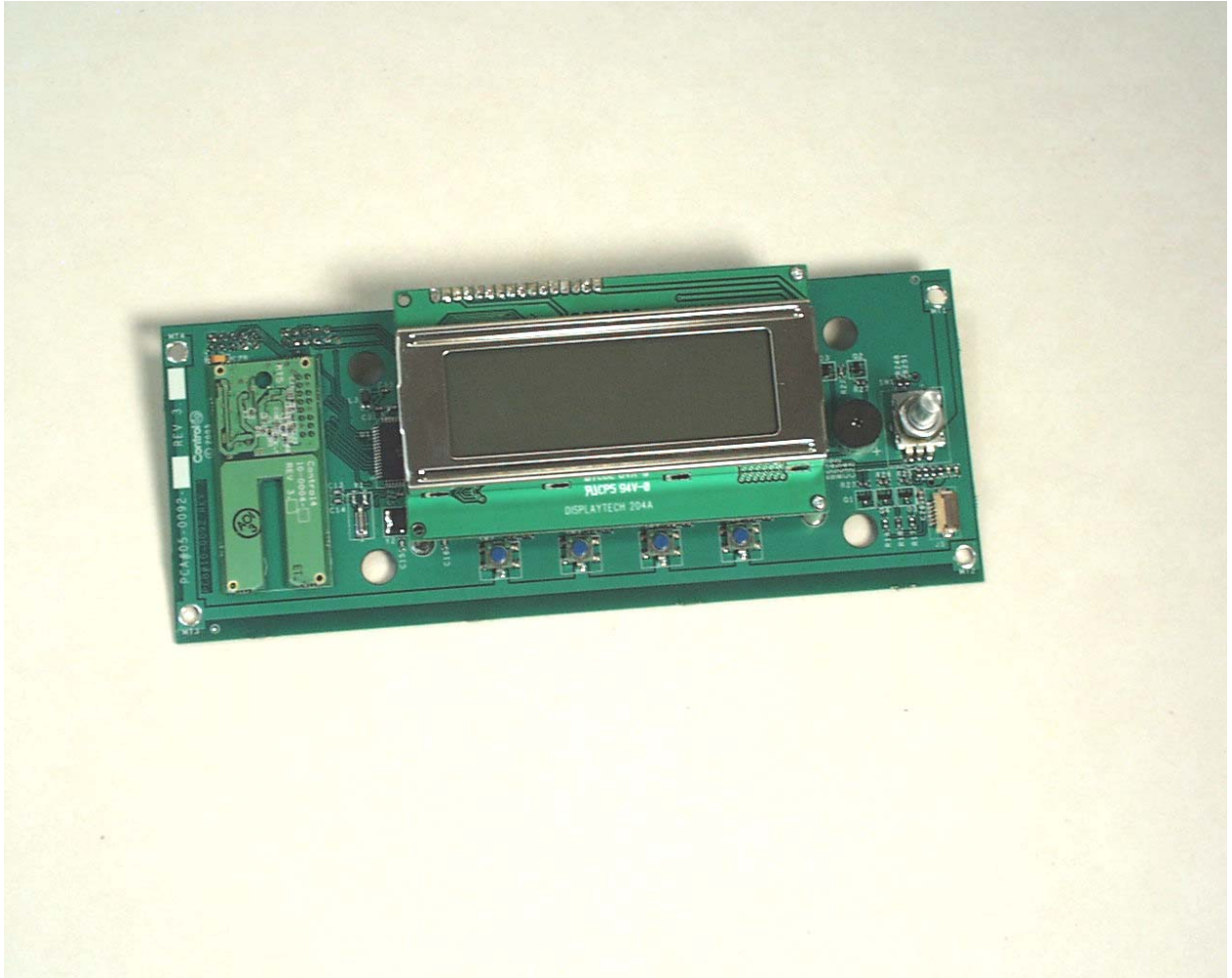
Top Side of the Main PCB



Bottom Side of the Main PCB

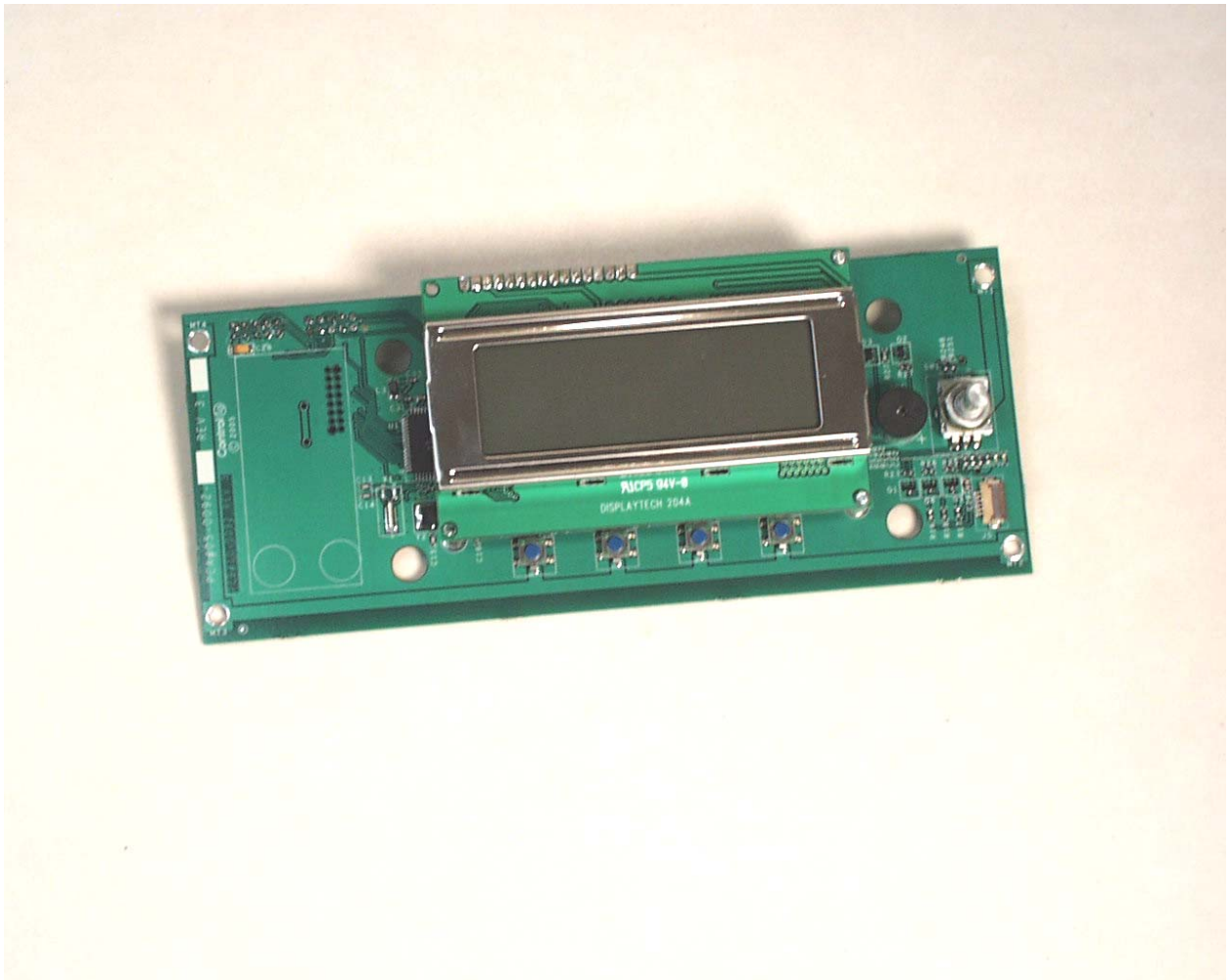


Component Side of the Front Panel PCB with Zigbee Radio

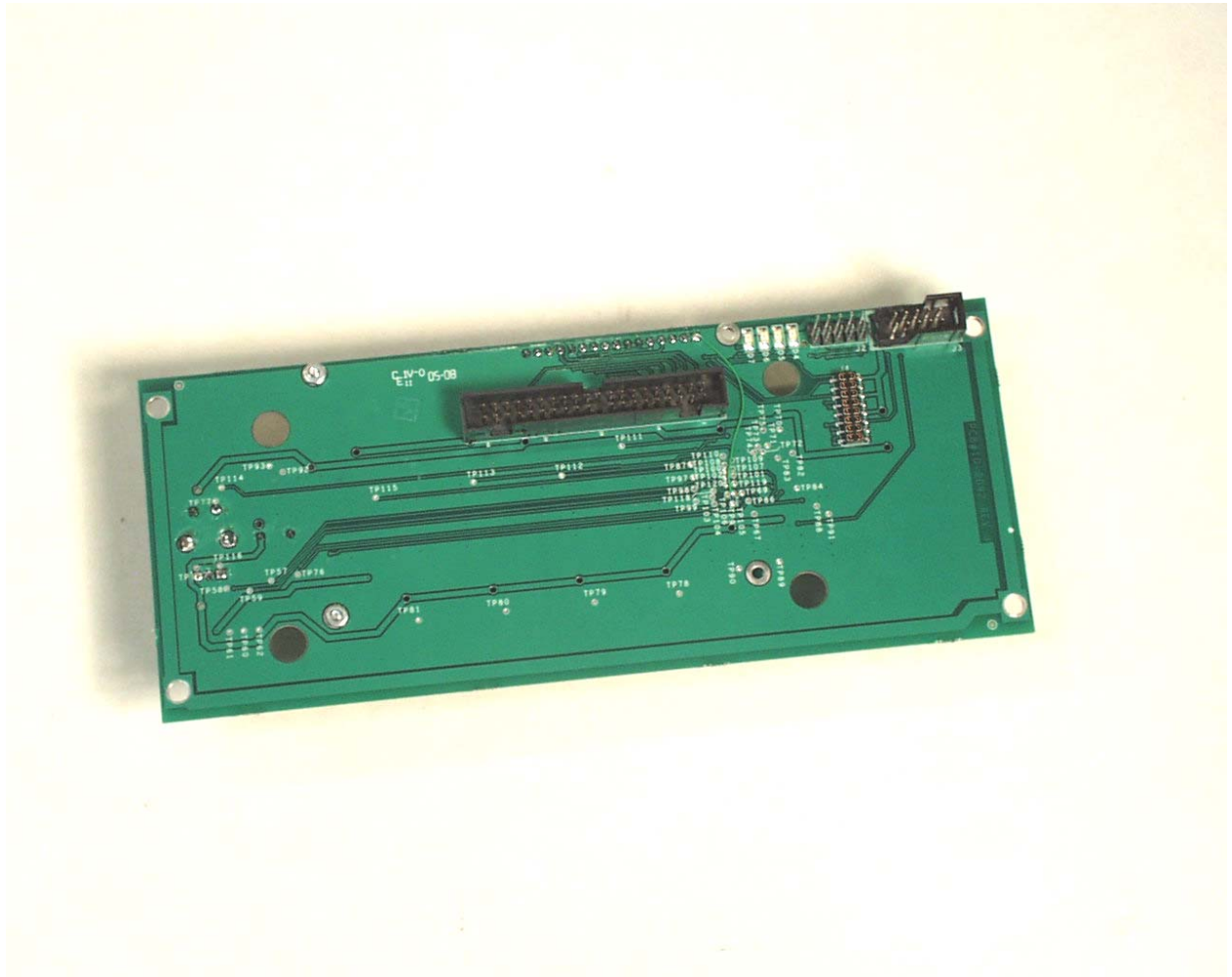




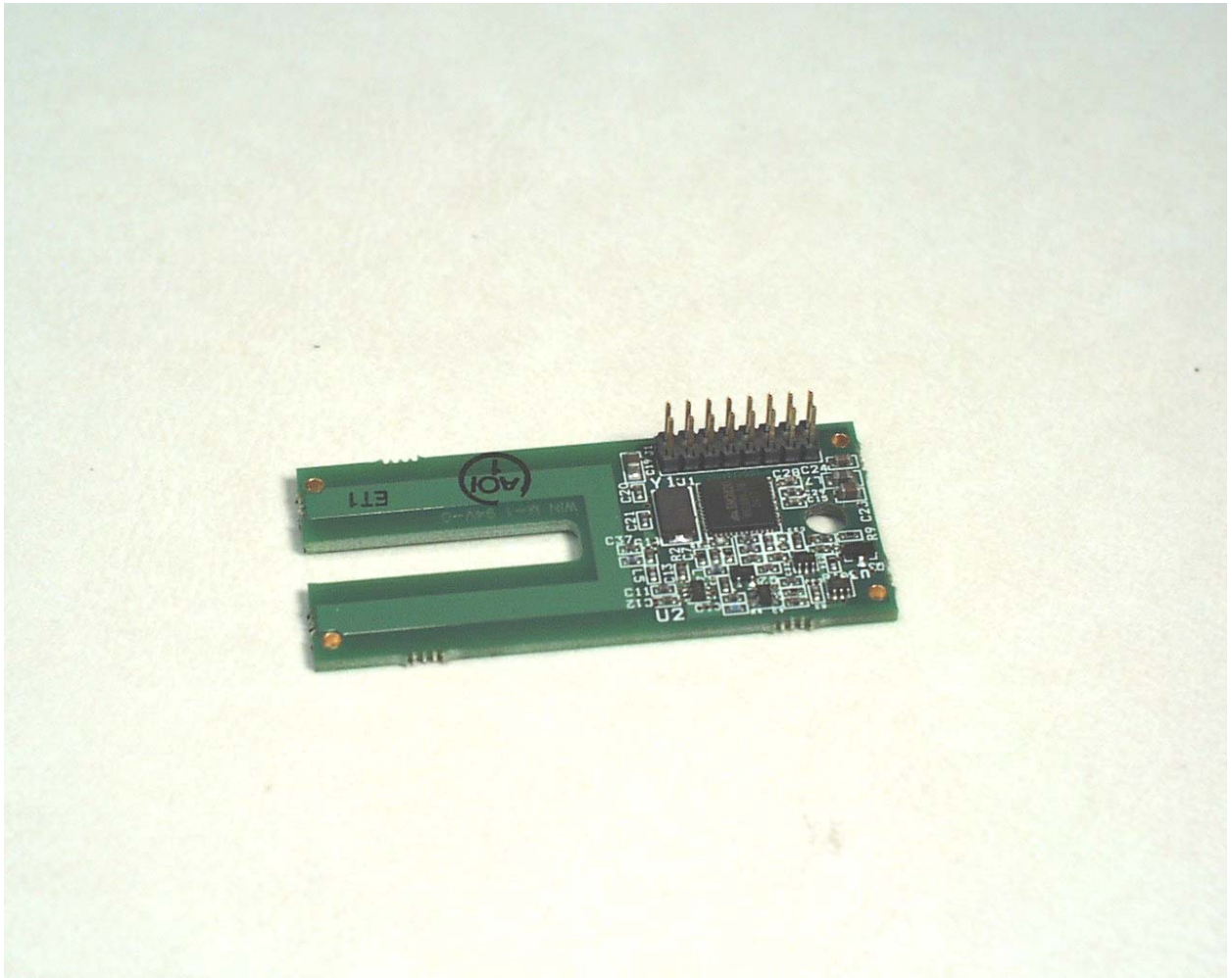
Component Side of the Front Panel PCB with Zigbee Radio  
Removed



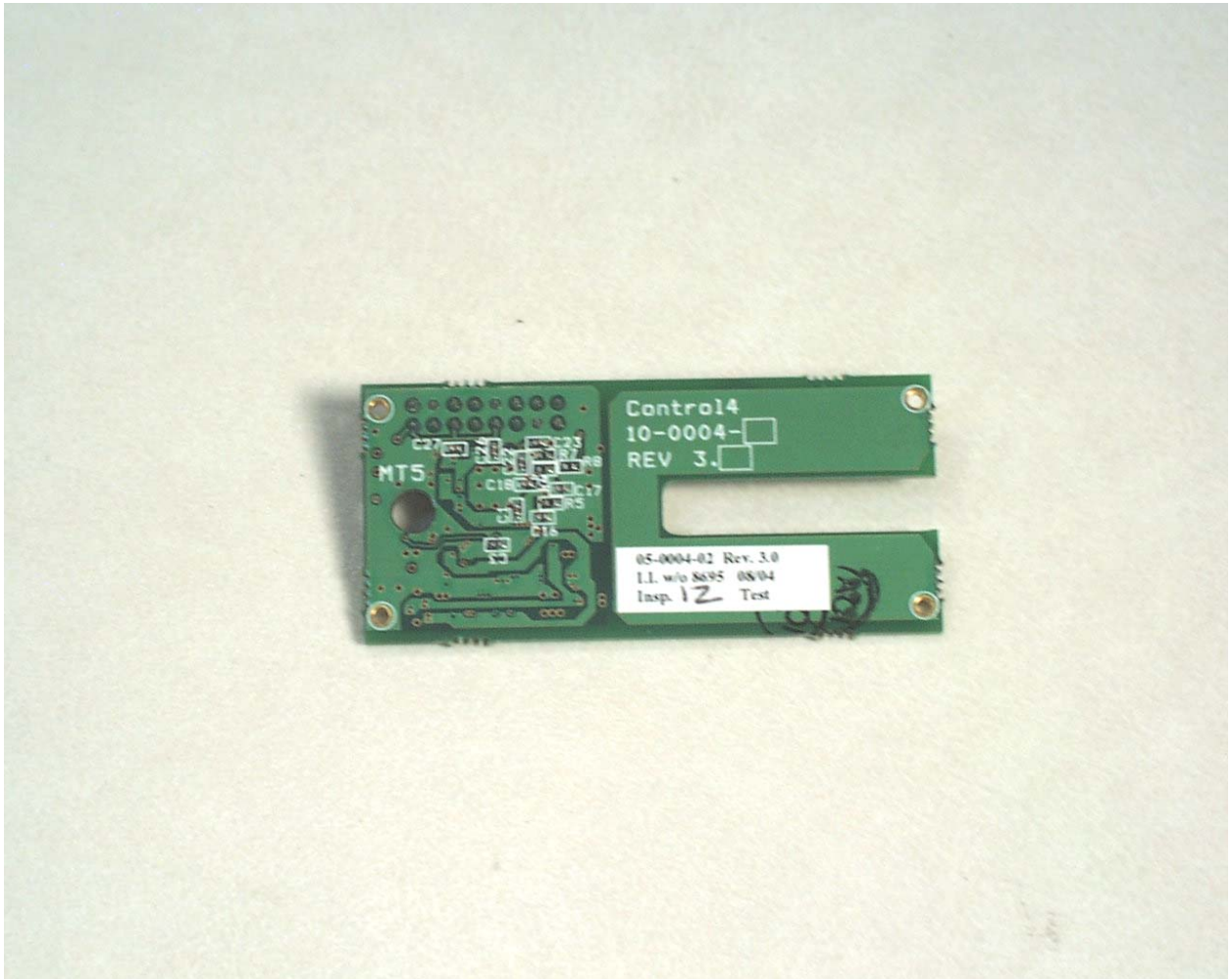
Trace Side of the Front Panel PCB



Component Side of the Zigbee Radio

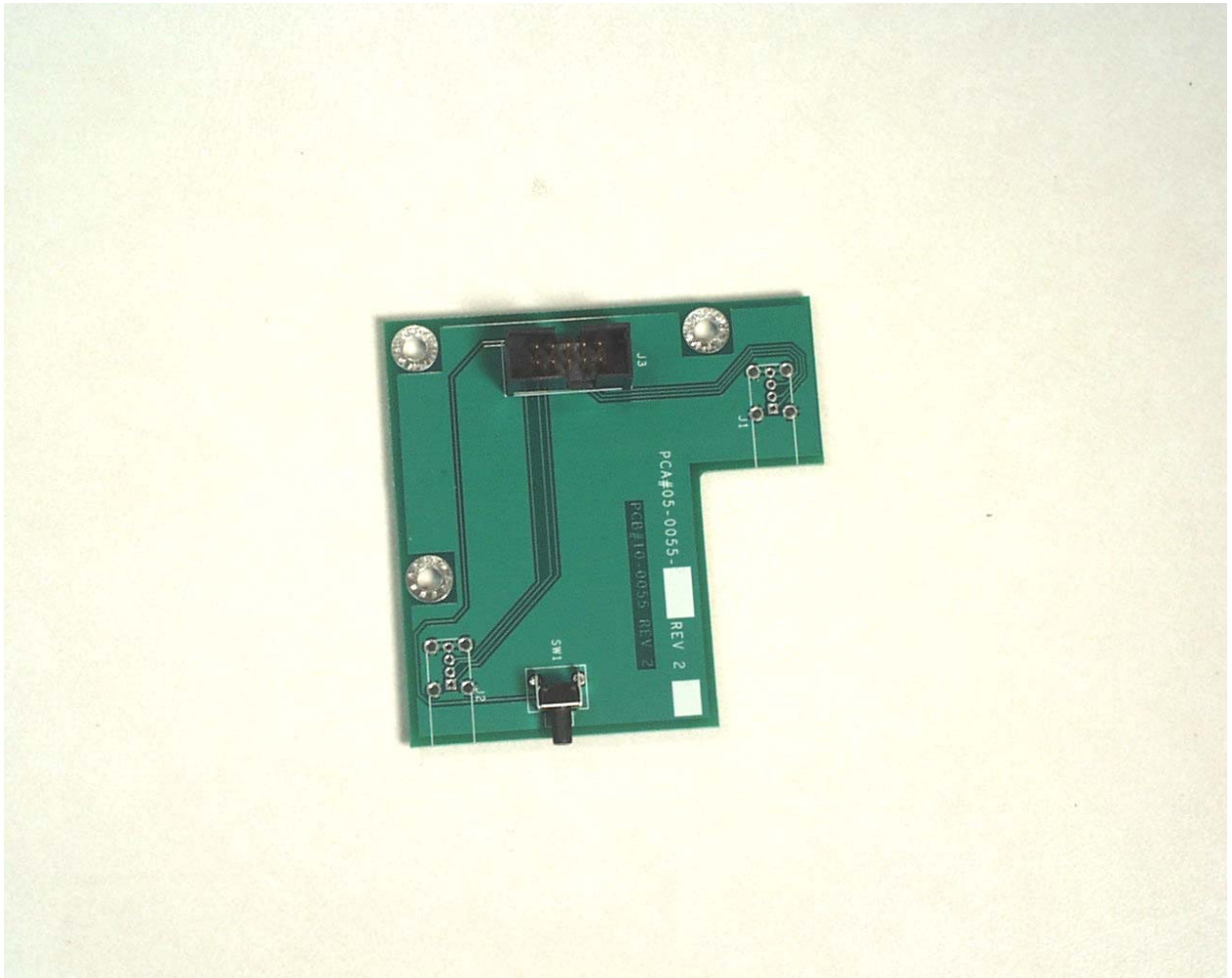


# Trace Side of the Zigbee Radio

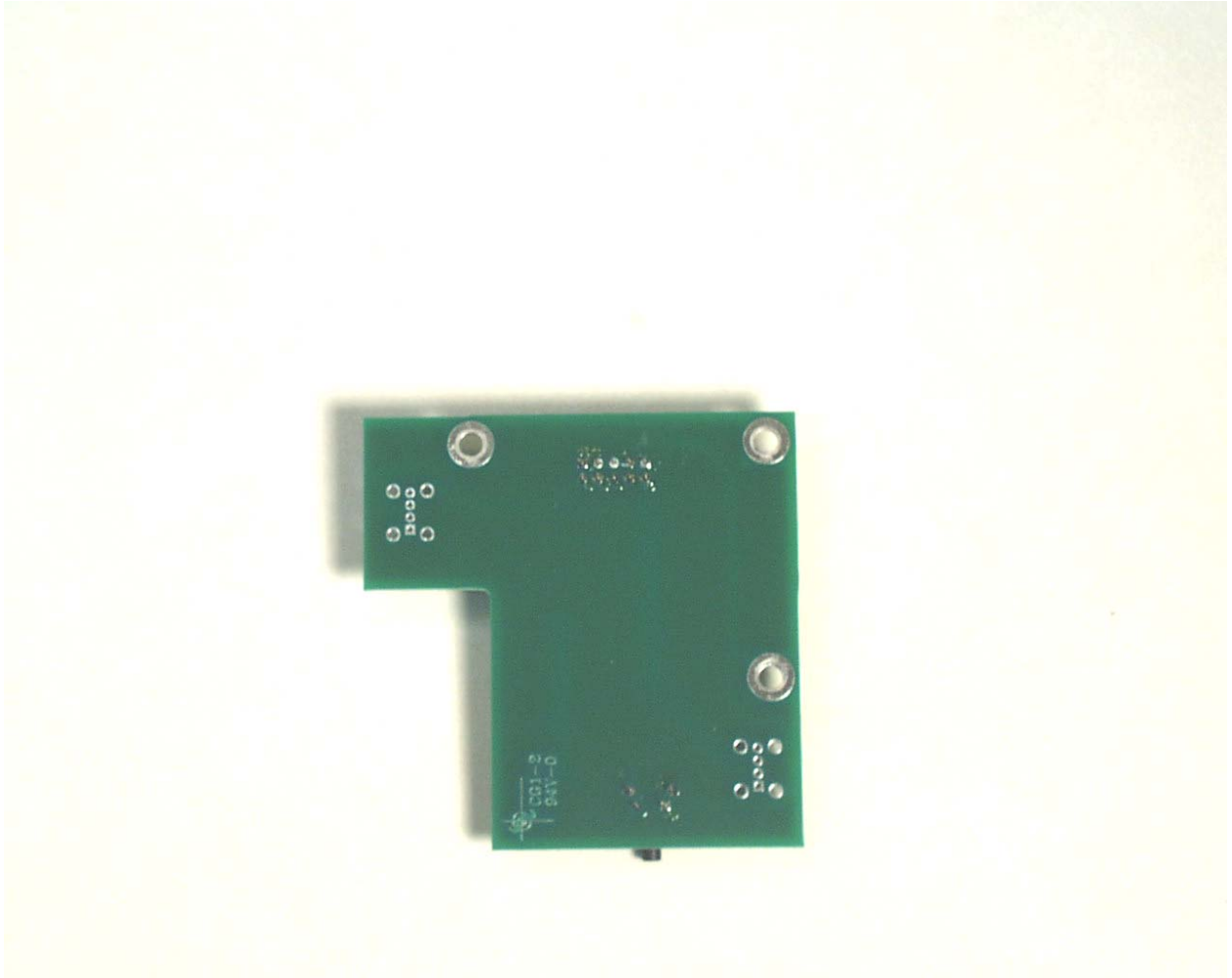




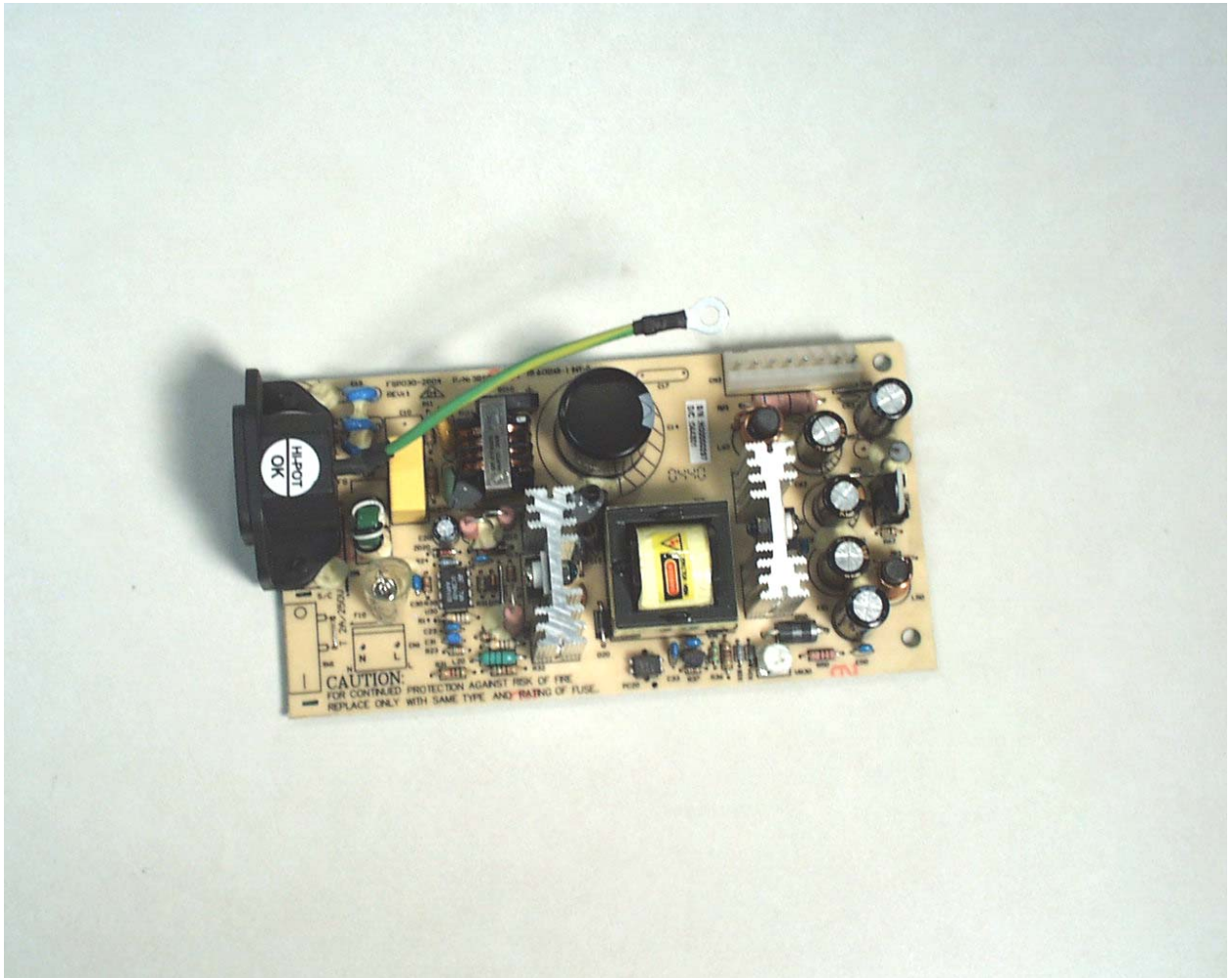
Component Side of the Reset PCB



Trace Side of the Reset PCB



Component Side of the Power Supply



Trace Side of the Power Supply

