



	Test Report Serial No.:	113015AMW-T1338-E95D	Test Report Issue Date:	21 December 2015	
	Measurement Date(s):	11 Nov – 17 Dec, 2015	Test Report Revision No.:	1.0	
	Rule Part(s) Applied:	FCC 47 CFR §2, §95D, RSS-236, RSS_GEN	Test Site Registration(s):	FCC Accredited Site	
					Test Lab Certificate No. 2470.01

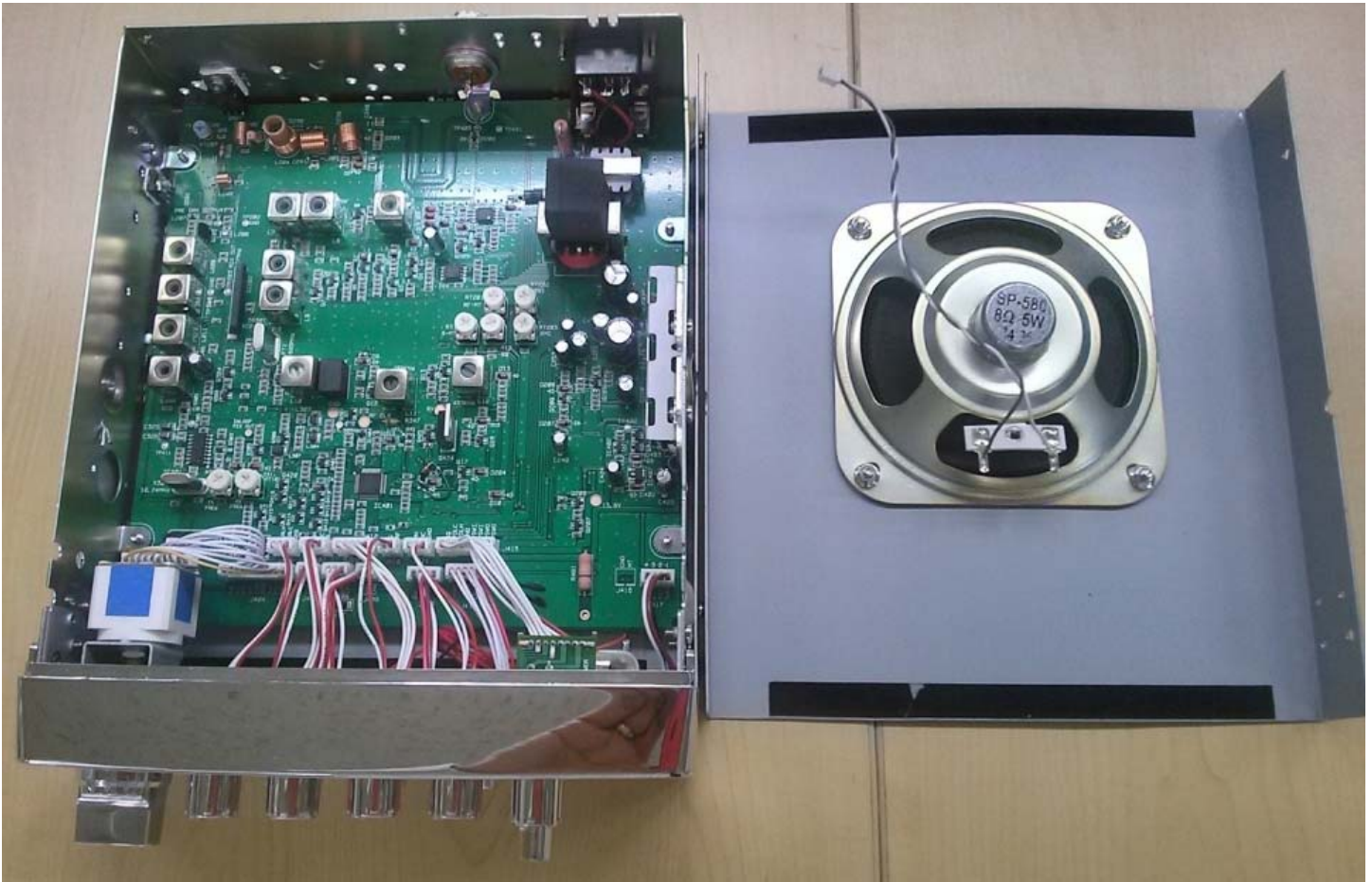
## Device Internal Photographs




Case Open

Applicant:	Uniden America Corporation	FCC ID:	AMWUT414	Model(s):	RK5640	
DUT Type:	Mobile AM CB Radio Transceiver.	IC:	513C-UT414	Frequency Range:	26.965 - 27.405 MHz	
2015 Celltech Labs Inc.		This document is not to be reproduced in whole or in part without the prior written permission of Celltech Labs Inc.				Page 1 of 11



 Testing and Engineering Services Ltd.	Test Report Serial No.:	113015AMW-T1338-E95D	Test Report Issue Date:	21 December 2015	 Test Lab Certificate No. 2470.01
	Measurement Date(s):	11 Nov – 17 Dec, 2015	Test Report Revision No.:	1.0	
	Rule Part(s) Applied:	FCC 47 CFR §2, §95D, RSS-236, RSS_GEN	Test Site Registration(s):	FCC Accredited Site	

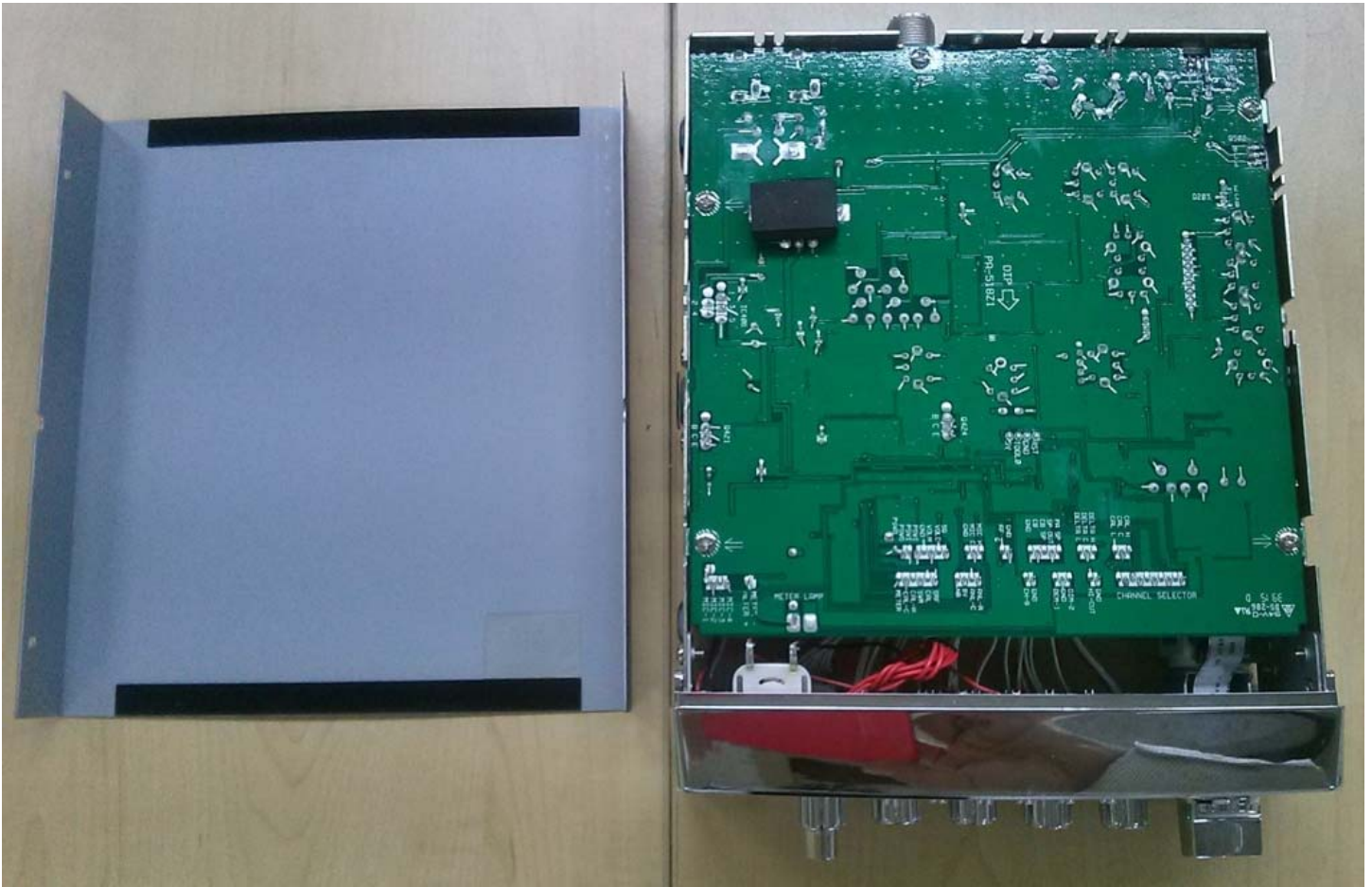


PCB Top


Applicant:	Uniden America Corporation	FCC ID:	AMWUT414	Model(s):	RK5640	
DUT Type:	Mobile AM CB Radio Transceiver.	IC:	513C-UT414	Frequency Range:	26.965 - 27.405 MHz	
2015 Celltech Labs Inc.		This document is not to be reproduced in whole or in part without the prior written permission of Celltech Labs Inc.				Page 2 of 11





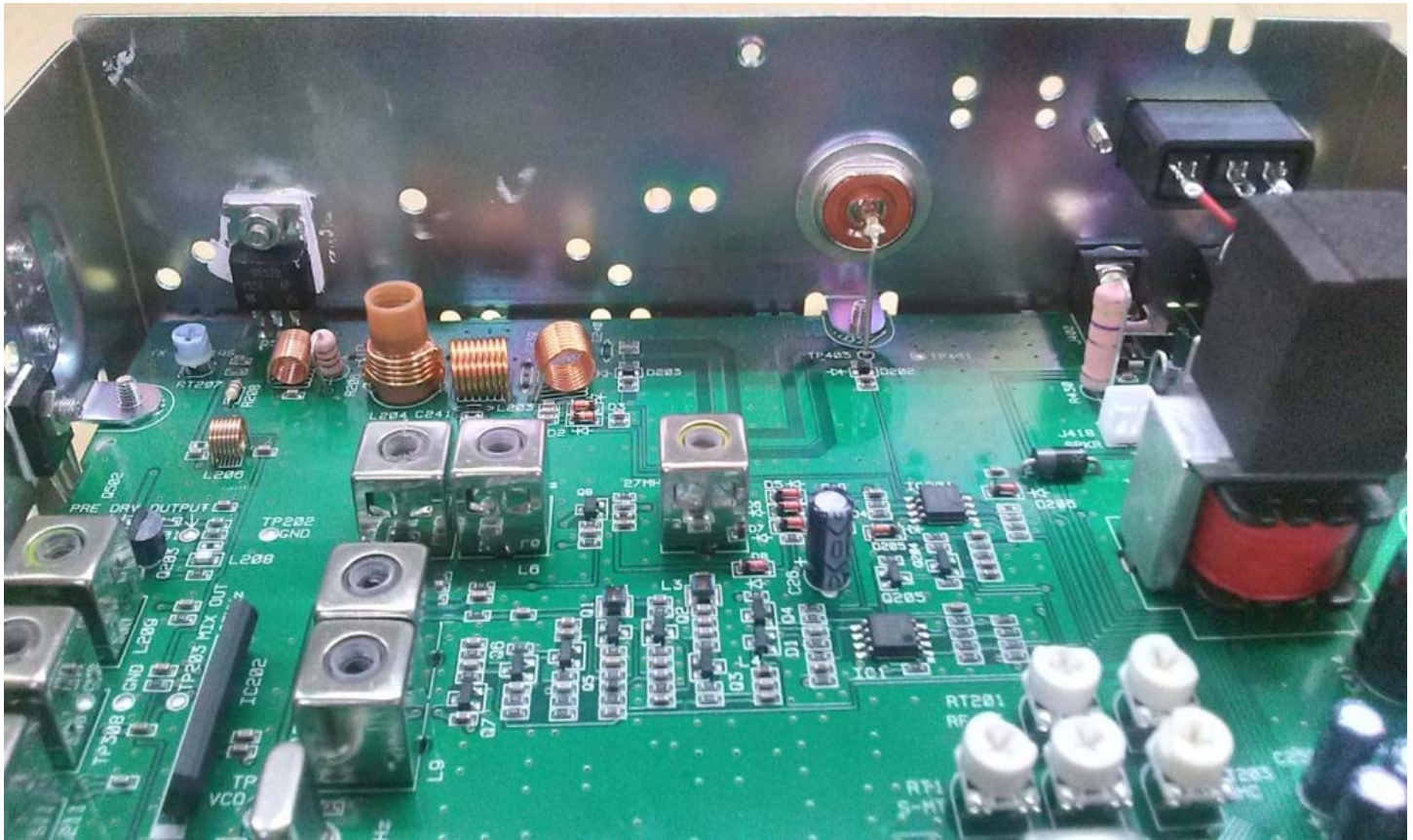
	Test Report Serial No.:	113015AMW-T1338-E95D	Test Report Issue Date:	21 December 2015	
	Measurement Date(s):	11 Nov – 17 Dec, 2015	Test Report Revision No.:	1.0	
	Rule Part(s) Applied:	FCC 47 CFR §2, §95D, RSS-236, RSS_GEN	Test Site Registration(s):	FCC Accredited Site	
					Test Lab Certificate No. 2470.01




PCB Bottom

Applicant:	Uniden America Corporation	FCC ID:	AMWUT414	Model(s):	RK5640	
DUT Type:	Mobile AM CB Radio Transceiver.	IC:	513C-UT414	Frequency Range:	26.965 - 27.405 MHz	
2015 Celltech Labs Inc.		This document is not to be reproduced in whole or in part without the prior written permission of Celltech Labs Inc.				Page 3 of 11



	Test Report Serial No.:	113015AMW-T1338-E95D	Test Report Issue Date:	21 December 2015	
	Measurement Date(s):	11 Nov – 17 Dec, 2015	Test Report Revision No.:	1.0	
	Rule Part(s) Applied:	FCC 47 CFR §2, §95D, RSS-236, RSS_GEN	Test Site Registration(s):	FCC Accredited Site	
					Test Lab Certificate No. 2470.01

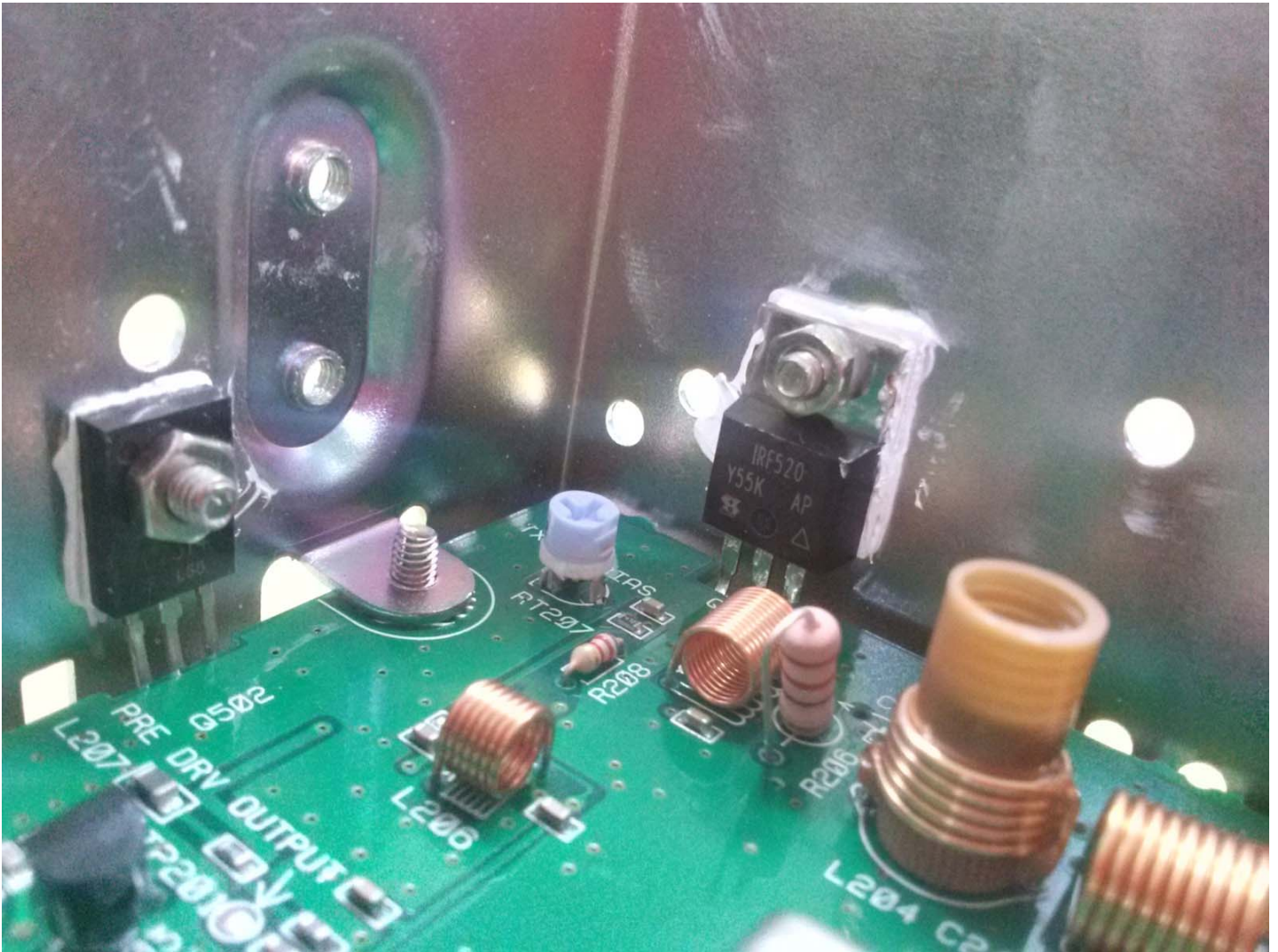


PCB Rear View


Applicant:	Uniden America Corporation	FCC ID:	AMWUT414	Model(s):	RK5640	
DUT Type:	Mobile AM CB Radio Transceiver.	IC:	513C-UT414	Frequency Range:	26.965 - 27.405 MHz	
2015 Celltech Labs Inc.		This document is not to be reproduced in whole or in part without the prior written permission of Celltech Labs Inc.				Page 4 of 11





	Test Report Serial No.:	113015AMW-T1338-E95D	Test Report Issue Date:	21 December 2015	
	Measurement Date(s):	11 Nov – 17 Dec, 2015	Test Report Revision No.:	1.0	
	Rule Part(s) Applied:	FCC 47 CFR §2, §95D, RSS-236, RSS_GEN	Test Site Registration(s):	FCC Accredited Site	
					Test Lab Certificate No. 2470.01




PCB Transmitter Power Amplifier

Applicant:	Uniden America Corporation	FCC ID: IC:	AMWUT414 513C-UT414	Model(s):	RK5640	
DUT Type:	Mobile AM CB Radio Transceiver.			Frequency Range:	26.965 - 27.405 MHz	
2015 Celltech Labs Inc.		This document is not to be reproduced in whole or in part without the prior written permission of Celltech Labs Inc.				Page 5 of 11



	Test Report Serial No.:	113015AMW-T1338-E95D	Test Report Issue Date:	21 December 2015	
	Measurement Date(s):	11 Nov – 17 Dec, 2015	Test Report Revision No.:	1.0	
	Rule Part(s) Applied:	FCC 47 CFR §2, §95D, RSS-236, RSS_GEN	Test Site Registration(s):	FCC Accredited Site	
					Test Lab Certificate No. 2470.01

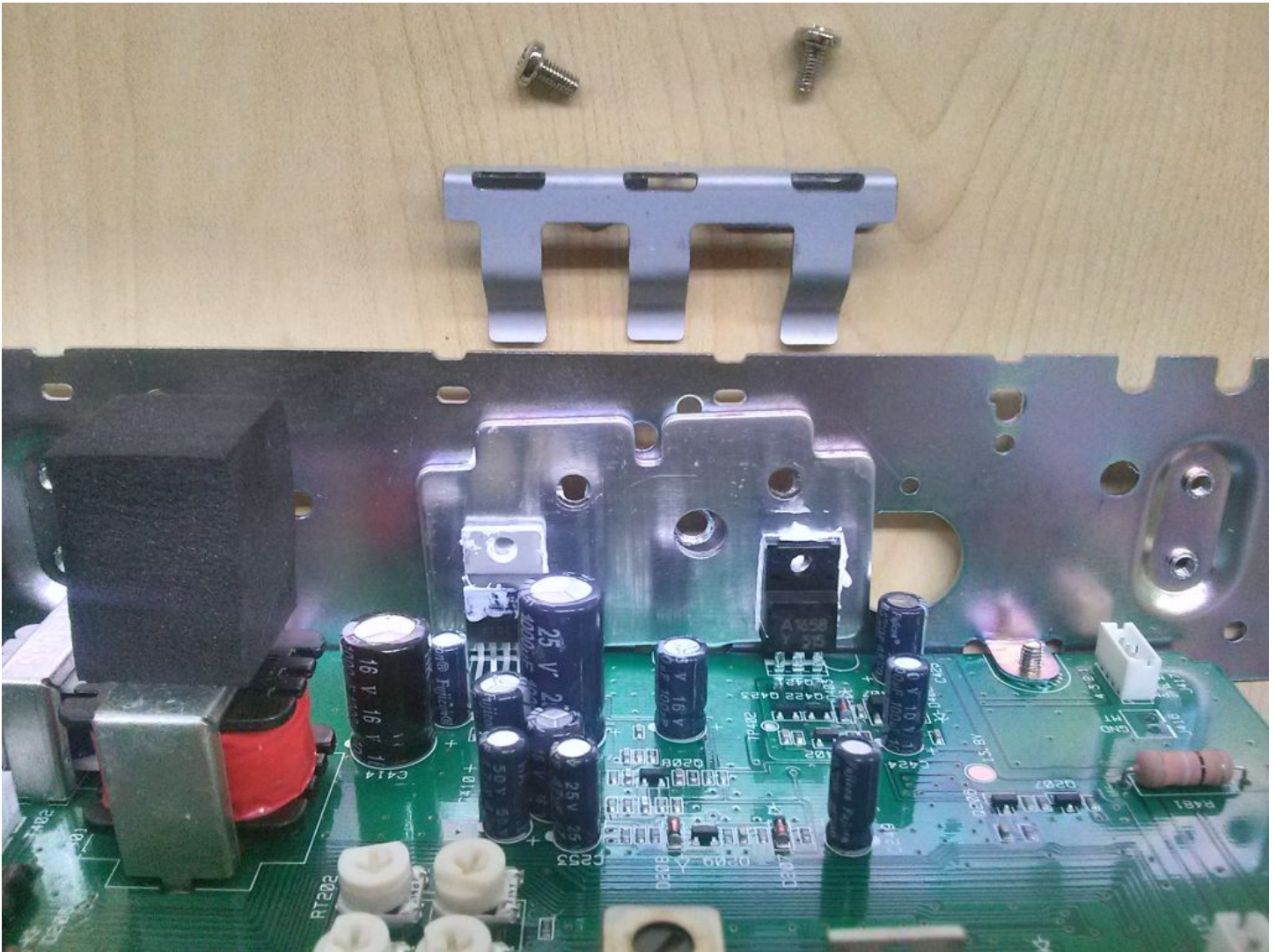


PCB Side View


Applicant:	Uniden America Corporation	FCC ID: IC:	AMWUT414 513C-UT414	Model(s):	RK5640	
DUT Type:	Mobile AM CB Radio Transceiver.			Frequency Range:	26.965 - 27.405 MHz	
2015 Celltech Labs Inc.		This document is not to be reproduced in whole or in part without the prior written permission of Celltech Labs Inc.				Page 6 of 11





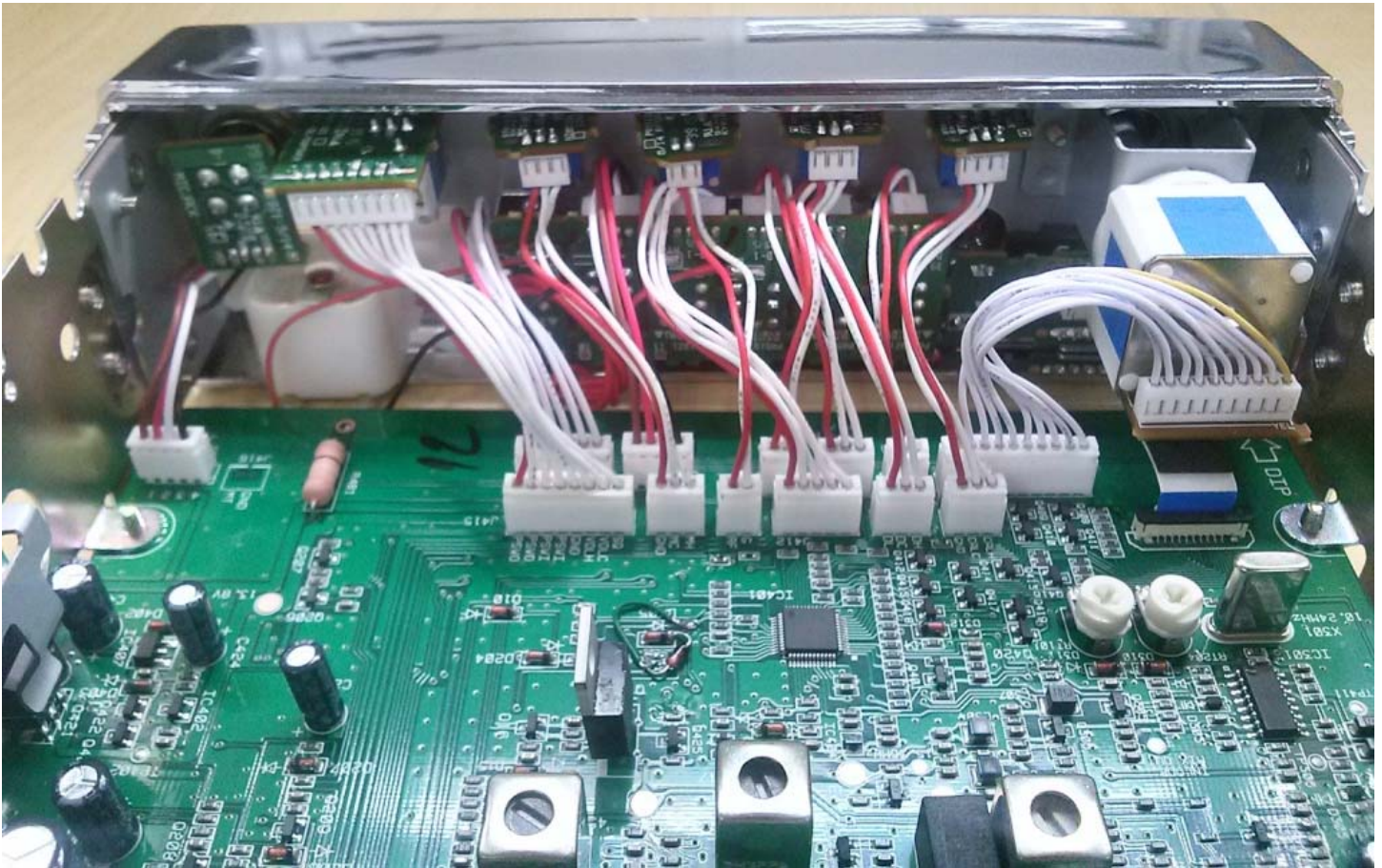
	Test Report Serial No.:	113015AMW-T1338-E95D	Test Report Issue Date:	21 December 2015	
	Measurement Date(s):	11 Nov – 17 Dec, 2015	Test Report Revision No.:	1.0	
	Rule Part(s) Applied:	FCC 47 CFR §2, §95D, RSS-236, RSS_GEN	Test Site Registration(s):	FCC Accredited Site	
					Test Lab Certificate No. 2470.01




PCB Audio Amplifier

Applicant:	Uniden America Corporation	FCC ID:	AMWUT414	Model(s):	RK5640	
DUT Type:	Mobile AM CB Radio Transceiver.	IC:	513C-UT414	Frequency Range:	26.965 - 27.405 MHz	
2015 Celltech Labs Inc.		This document is not to be reproduced in whole or in part without the prior written permission of Celltech Labs Inc.				Page 7 of 11



	Test Report Serial No.:	113015AMW-T1338-E95D	Test Report Issue Date:	21 December 2015	
	Measurement Date(s):	11 Nov – 17 Dec, 2015	Test Report Revision No.:	1.0	
	Rule Part(s) Applied:	FCC 47 CFR §2, §95D, RSS-236, RSS_GEN	Test Site Registration(s):	FCC Accredited Site	
					Test Lab Certificate No. 2470.01

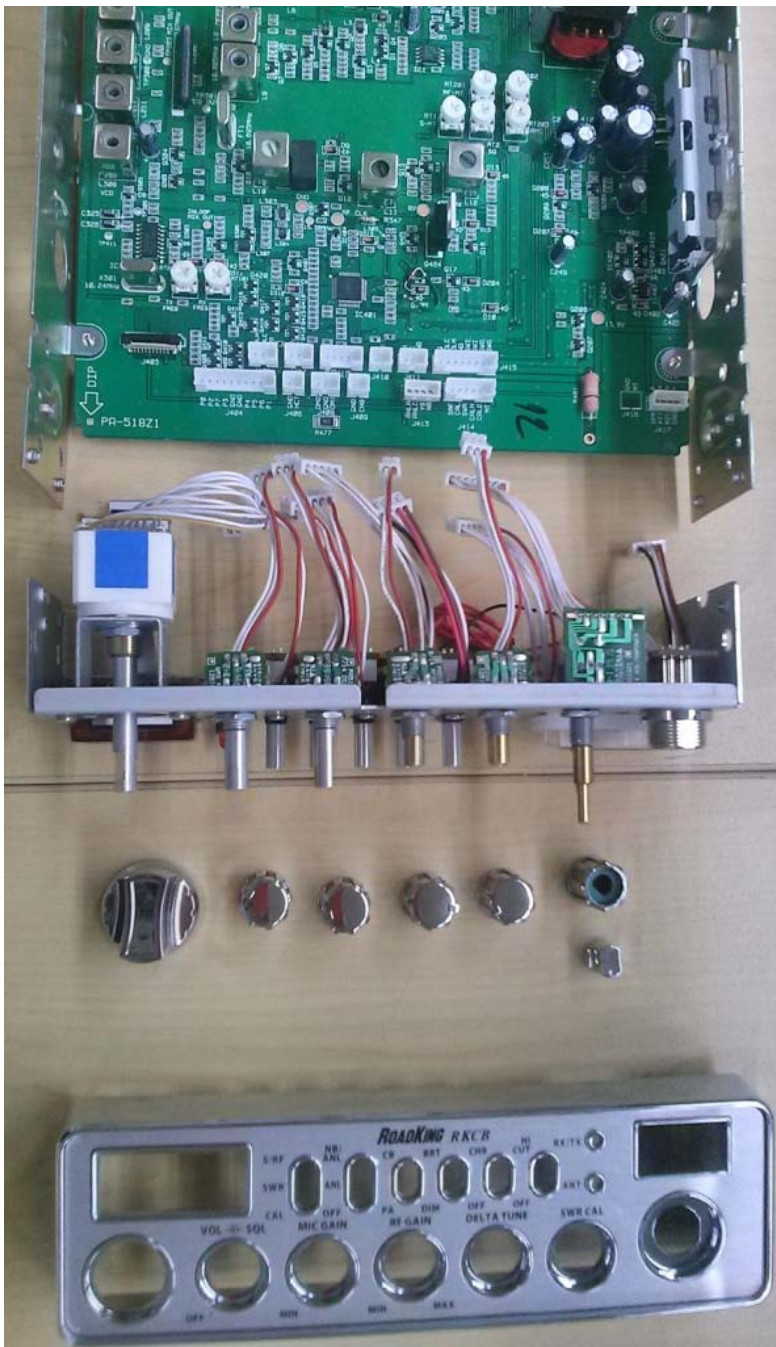


PCB Front View


Applicant:	Uniden America Corporation	FCC ID: IC:	AMWUT414 513C-UT414	Model(s):	RK5640	
DUT Type:	Mobile AM CB Radio Transceiver.			Frequency Range:	26.965 - 27.405 MHz	
2015 Celltech Labs Inc.		This document is not to be reproduced in whole or in part without the prior written permission of Celltech Labs Inc.				Page 8 of 11





	Test Report Serial No.:	113015AMW-T1338-E95D	Test Report Issue Date:	21 December 2015	
	Measurement Date(s):	11 Nov – 17 Dec, 2015	Test Report Revision No.:	1.0	
	Rule Part(s) Applied:	FCC 47 CFR §2, §95D, RSS-236, RSS_GEN	Test Site Registration(s):	FCC Accredited Site	
					Test Lab Certificate No. 2470.01



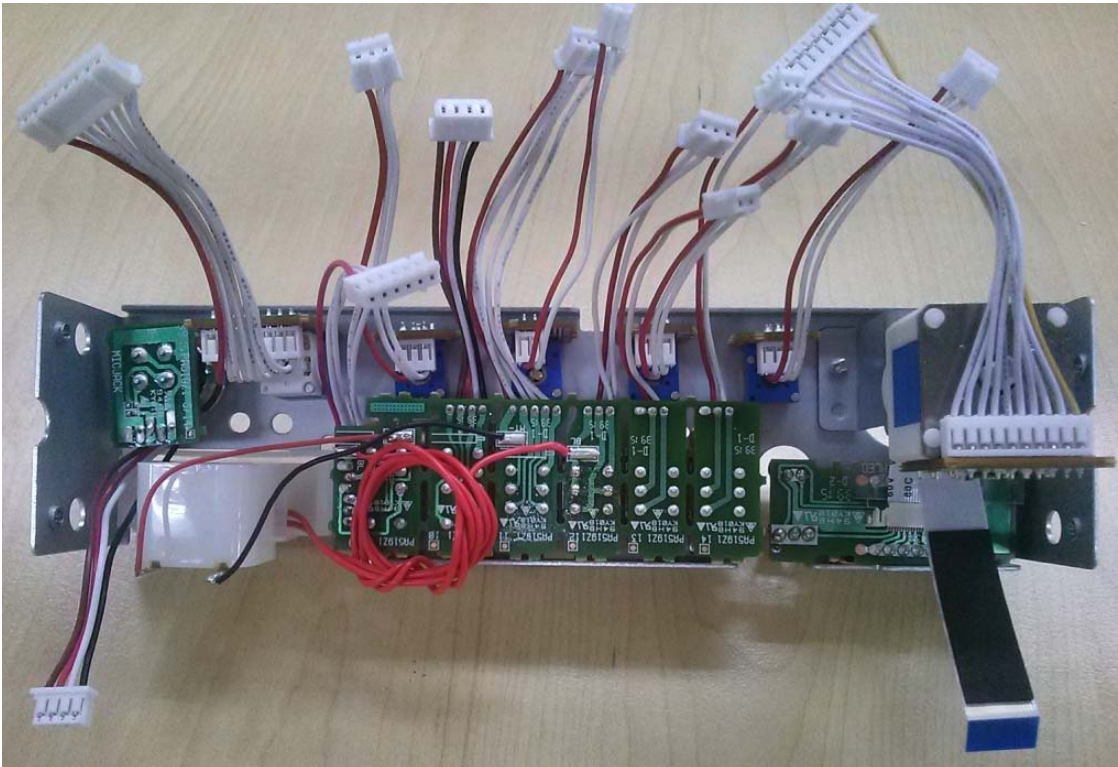
Main Front Control

Applicant:	Uniden America Corporation	FCC ID:	AMWUT414	Model(s):	RK5640	
DUT Type:	Mobile AM CB Radio Transceiver.	IC:	513C-UT414	Frequency Range:	26.965 - 27.405 MHz	
2015 Celltech Labs Inc.		This document is not to be reproduced in whole or in part without the prior written permission of Celltech Labs Inc.				Page 9 of 11


	Test Report Serial No.:	113015AMW-T1338-E95D	Test Report Issue Date:	21 December 2015	 Test Lab Certificate No. 2470.01
	Measurement Date(s):	11 Nov – 17 Dec, 2015	Test Report Revision No.:	1.0	
	Rule Part(s) Applied:	FCC 47 CFR §2, §95D, RSS-236, RSS_GEN	Test Site Registration(s):	FCC Accredited Site	





Front Chassis Assembly – Front View

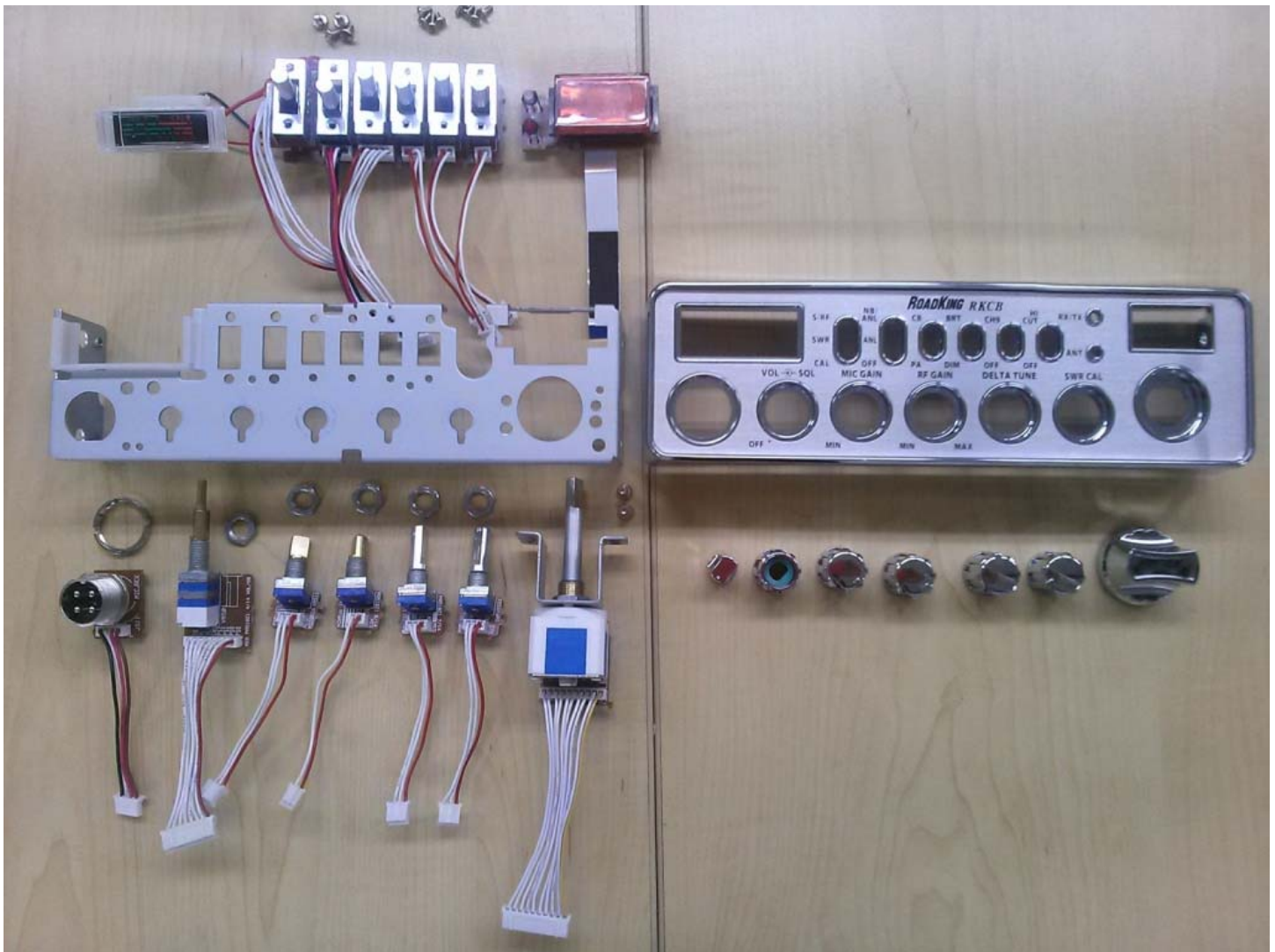


Front Chassis Assembly – Rear View


Applicant:	Uniden America Corporation	FCC ID:	AMWUT414	Model(s):	RK5640	
DUT Type:	Mobile AM CB Radio Transceiver.	IC:	513C-UT414	Frequency Range:	26.965 - 27.405 MHz	
2015 Celltech Labs Inc.		This document is not to be reproduced in whole or in part without the prior written permission of Celltech Labs Inc.				Page 10 of 11



	Test Report Serial No.:	113015AMW-T1338-E95D	Test Report Issue Date:	21 December 2015	
	Measurement Date(s):	11 Nov – 17 Dec, 2015	Test Report Revision No.:	1.0	
	Rule Part(s) Applied:	FCC 47 CFR §2, §95D, RSS-236, RSS_GEN	Test Site Registration(s):	FCC Accredited Site	
					Test Lab Certificate No. 2470.01



Front Chassis – Components

Applicant:	Uniden America Corporation	FCC ID:	AMWUT414	Model(s):	RK5640	
DUT Type:	Mobile AM CB Radio Transceiver.	IC:	513C-UT414	Frequency Range:	26.965 - 27.405 MHz	
2015 Celltech Labs Inc.		This document is not to be reproduced in whole or in part without the prior written permission of Celltech Labs Inc.				Page 11 of 11