



FCC PART18 TEST REPORT

Report No.: 20250417G09715X-E

Product Name: Microwave Oven

Trade Name: Midea, Solwave

Model No. : EM234GY-S, EM234GY-S, EM234GY, EM234GY, 180MW1200T, 1234G1A

FCC ID : 2AULTEM234GY

Applicant: THAI TOSHIBA ELECTRIC INDUSTRIES COMPANY LIMITED

Received Date: 2025.04.28

Test Data: 2023.10.16-2023.10.17

Issued by: CCIC Southern Testing Co., Ltd.

Lab Location: Electronic Testing Building, No.43, ShaheRoad, Xili Street, Nanshan District, Shenzhen, Guangdong, China
Query E-Mail: manager@ccic-set.com
Feedback E-Mail: integrity@ccic-set.com
Report Query Tel: 0755-26627338
Feedback Tel: 0755-86185963

This test report consists of **21** pages in total. It may be duplicated completely for legal use with the approval of the applicant. It should not be reproduced except in full, without the written approval of our laboratory. The client should not use it to claim product endorsement by CCIC-SET. The test results in the report only apply to the tested sample. The test report shall be invalid without all the signatures of testing engineers, reviewer and approver. Any objections must be raised to CCIC-SET within 15 days since the date when the report is received. It will not be taken into consideration beyond this limit.



Test Report

Product Name.....: Microwave Oven

Model No.: EM234GY-S, EM234GY-S, EM234GY, EM234GY, 180MW1200T, 1234G1A

Trade name: Midea, Solwave

Applicant.....: THAI TOSHIBA ELECTRIC INDUSTRIES COMPANY LIMITED

Applicant Address.....: 129/1-5, Tiwanon Road, Tha Sai Sub-district, Mueang Nonthaburi District, Nonthaburi Province, Thailand

Manufacturer: THAI TOSHIBA ELECTRIC INDUSTRIES COMPANY LIMITED

Manufacturer Address: 129/1-5, Tiwanon Road, Tha Sai Sub-district, Mueang Nonthaburi District, Nonthaburi Province, Thailand

Test Standards: 47 CFR Part 18

Test Result.....: PASS

Tested by: Deng Shanfei
Deng Shanfei, Test Engineer 2025.04.28

Reviewed by: Sun Jiaohui
Sun Jiaohui, Senior Engineer 2025.04.28

Approved by: Chris You
Chris You, Manager 2025.04.28

**TABLE OF CONTENTS**

1.	GENERAL INFORMATION	5
1.1	GENERAL DESCRIPTION OF EUT	5
1.2	Test Standards and Results	6
1.3	Facilities and Accreditations	7
1.3.1	Facilities	7
1.3.2	Test Environment Conditions	7
1.3.3	Measurement Uncertainty	8
2.	EQUIPMENTS LIST	8
3.	EMC EMISSION TEST	9
3.1	Test Procedure	9
3.1.1	Frequency For Normal Voltage	9
3.1.2	Frequency For Line Voltage	9
3.1.3	Measurement data.....	10
3.2	RADIATION HAZARD TEST	10
3.2.1	Test Setup	10
3.2.2	Limit	10
3.2.3	Test results	10
3.3	RF OUTPUT POWER MEASUREMENT	10
3.3.1	Test Standard	10
3.3.2	EUT Operating mode	11
3.3.3	Test Data	11
4.	CONDUCTED EMISSION	12
4.1.1	Conducted Emission Limit	12
4.1.2	Test Procedure	12
4.1.3	Test Setup	12
5.	RADIATED EMISSION	15
5.1.1	Radiated Emission Limits	15
5.1.2	Test Setup	15
5.1.3	Test Procedure	16
APPENDIX I: PHOTOGRAPHS OF EMC TEST CONFIGURATION		20



Change History		
Issue	Date	Reason for change
1.0	2025.04.28	First edition



1. GENERAL INFORMATION

1.1 GENERAL DESCRIPTION OF EUT

EUT Name	Microwave Oven
Trade Name.....	Midea, Solwave
Model.....	EM234GY-S, EM234GY-S, EM234GY, EM234GY, 180MW1200T, 1234G1A model designations are as follows: E: Indicates film type keypad; M: Indicates microwave function; 234: "2" indicates the microwave output power is 1200W, "34" indicates cavity capacity is 34 liters; G: Indicates the design No; YY or YYY: "Y" = 0-9, A-Z or blank, indicates different appearance; -S: Stands for stainless steel cavity; All models are identical to Midea model EM234G4Q-S except for model number, trade mark and appearance. Model of EM234GTQ-S was selected for the final testing.
Power Supply	120VAC/60Hz
Rated input Power(microwave):	2050W
Rated output Power(microwave):	1200W
Frequency	2450MHz (ClassB / Group 2)
Magnetron Model.....	2M248E
Magnetron Manufacturer ...:	TOSHIBA
Description of Support Units:	-Load for power output measurement: 1200 milliliters of water in the beaker located in the center of the oven. -Load for frequency measurement: 1200milliliters of water in the beaker located in the center of the oven. -Load for measurement of radiation on second and third harmonic: Two loads, one of 840 and the other of 360 milliliters, of water are used. Each load is tested both with the beaker located in the center of the oven and with it in the right front corner. -Load for all other measurements: 840 milliliters of water, with the beaker located in the center of the oven.

Note 1: The EUT have the following typical setups during the test:

Setup1: Microwave heating mode(According to FCC PART 18);

Note 2: Based on the original report 20231017G13373X-E, change the applicant, manufacturer's name and address, and the customer's models and trade mark are added. Everything else are exactly the same.

Note 3: For a more detailed description, please refer to Specification or User's Manual supplied by the applicant and/or manufacturer.

1.2 Test Standards and Results

The objective of the report is to perform testing according to 47 CFR Part 18:

No.	Identity	Document Title
1	47 CFR Part 18	Radio Frequency Devices

Test detailed items/section required by FCC rules and results are as below:

Emission			
Standard	Item	Class / Severity	Result
47 CFR PART 18	Conducted Emission (150 kHz to 30 MHz)	18.307(b)	PASS
	Radiated Emission (30 MHz to 1 GHz)	18.305(b)	PASS



1.3 Facilities and Accreditations

1.3.1 Facilities

☒ CCIC-SET Lab 1

Address: Electronic Testing Building, No.43, Shahe Road, Xili Street, Nanshan District, Shenzhen, Guangdong, China

FCC-Registration No.: CN1283

CCIC Southern Testing Co., Ltd EMC Laboratory has been registered and fully described in a report filed with the FCC (Federal Communications Commission). The acceptance letter from the FCC is maintained in our files. Designation Number: CN1283, valid time is until Jun. 30th, 2025.

ISED Registration: 11185A, CAB number: CN0064

CCIC Southern Testing Co., Ltd. EMC Laboratory has been registered by Certification and Engineering Bureau of Industry Canada for the performance of radiated measurements with Registration No. 11185A on Aug. 04, 2016, valid time is until Jun. 30th, 2025.

A2LA Code: 5721.01

CCIC-SET is a third party testing organization accredited by A2LA according to ISO/IEC 17025. The accreditation certificate number is 5721.01.

CNAS L1659

CCIC Southern Testing Co., Ltd. CCIC is a third party testing organization accredited by China National Accreditation Service for Conformity Assessment (CNAS) according to ISO/IEC 17025. The accreditation certificate number is L1659.

☐ CCIC-SET Lab 4

Address: No.125, Hongmei Section, Wangsha Road, Hongmei Town, Dongguan City, Guangdong Province, China

CNAS L1659

CCIC Southern Testing Co., Ltd. CCIC is a third party testing organization accredited by China National Accreditation Service for Conformity Assessment (CNAS) according to ISO/IEC 17025. The accreditation certificate number is L1659.

1.3.2 Test Environment Conditions

During the measurement, the environmental conditions were within the listed ranges:

Temperature (°C):	15°C- 35°C
Relative Humidity (%):	25% -75%



Atmospheric Pressure (kPa):	86kPa-106kPa
-----------------------------	--------------

1.3.3 Measurement Uncertainty

The uncertainty is calculated using the methods suggested in the "Guide to the Expression of Uncertainty in Measurement" (GUM) published by ISO.

Uncertainty of Conducted Emission:	Uc = 3.2 dB (k=2)
Uncertainty of Radiated Emission:(30MHz~1GHz)	Uc = 5.8 dB (k=2)
Uncertainty of Radiated Emission:(1~18GHz)	Uc = 5.1 dB (k=2)
Radiation Hazard Measurement	Uc = 2.4 dB (k=2)

2. EQUIPMENTS LIST

A. Equipment List:

Description	Manufacturer	Model	Serial No.	Calibration Date	Calibration Due. Date
Test Receiver	Rohde & Schwarz	ESIB26	A0304218	2022.11.29	2023.11.28
LISN	ROHDE&SCHWARZ	NSLK 8127	A210803670	2023.06.08	2024.06.07
Shield Room	Xinju Electronics	L9000*W4500* H3100	A181003230	2021.09.05	2024.09.04
EMI Test Receiver	ROHDE&SCHWARZ	ESIB7	A0501375	2023.03.16	2024.03.15
Broadband Ant.	ETC	MCTD2786	A150402240	2021.03.05	2024.03.04
3M Anechoic Chamber	Albatross	SAC-3MAC 9*6*6m	A0412375	2021.03.26	2024.03.25
EMI Test Receiver	ROHDE&SCHWARZ	ESW26	A180502935	2023.06.08	2024.06.07
5M Anechoic Chamber	Albatross	SAC-5MAC 12.8x6.8x6.4m	A0304210	2021.06.08	2024.06.07
EMI Horn Ant.	ETC	1209	A150402241	2021.01.02	2024.01.01
Test Receiver	Rohde & Schwarz	ESIB26	A0304218	2022.11.29	2023.11.28
Spectrum Analyzer	ROHDE&SCHWARZ	ESW26	A180502935	2023.06.08	2024.06.07
Portable Spectrometer	ROHDE&SCHWARZ	FSH8	A140401672	2023.02.14	2024.02.13
Prode	ROHDE&SCHWARZ	TSEMF-B1	A14040167 1	2023.02.14	2024.02.13

3. EMC EMISSION TEST

3.1 Test Procedure

Test Requirement: 47 CFR PART 18

Test Method: FCC/OST MP-5:1986

Power Supply: 120VAC/60Hz

Frequency Range: 2400-2500MHz

Detector: Peak

Limit: ISM equipment may be operated at any frequency above 9KHz and the frequency band 2400-2500MHz is allocated for use by ISM equipment

ISM frequency	Tolerance
6.78 MHz	±15.0 kHz
13.56 MHz	±7.0 kHz
27.12 MHz	±163.0 kHz
40.68 MHz	±20.0 kHz
915 MHz	±13.0 MHz
2,450 MHz	±50.0 MHz
5,800 MHz	±75.0 MHz
24,125 MHz	±125.0 MHz
61.25 GHz	±250.0 MHz
122.50 GHz	±500.0 MHz
245.00 GHz	±1.0 GHz

3.1.1 Frequency For Normal Voltage

The operating frequency was measured using a spectrum analyzer. Starting with the EUT at room temperature, a 1200mL water load was placed in the center of the oven and the oven was operated at maximum output power. The fundamental operating frequency was monitored until the water load was reduced to 20 percent of the original load.

3.1.2 Frequency For Line Voltage

The EUT was operated / warmed by at least 10 minutes of use with a 1200mL water load at room temperature at the beginning of the test. Then the operating frequency was monitored as the input voltage was varied between 80 and 125 percent of the nominal rating.

3.1.3 Measurement data

Operating Mode	Frequency(MHz)
Normal Voltage	2433.4-2460.3
Line Voltage	2439.5-2471.2

3.2 RADIATION HAZARD TEST

3.2.1 Test Setup

The EUT was set-up according to the FCC MP-5 and FCC Part 18 for radiation hazard measurement. The measurement was using a microwave leakage meter to measure the radiation leakage in the as-received condition with the oven door closed. A 1200 mL water load in a breaker was located in the center of the oven and the microwave oven was set to maximum power. While the oven operating, the microwave meter will check the leakage and then record the maximum leakage.

3.2.2 Limit

A maximum of 1.0mW/cm² is allowed in accordance with the applicable FCC standards.

3.2.3 Test results

Test location	Test result (mW/cm ²)	Limit(mW/cm ²)	Verdict
Left side	0.24	1.0	Pass
Right side	0.43	1.0	Pass
Front	0.53	1.0	Pass
Rear	0.31	1.0	Pass

There was no microwave leakage exceeding a power level of 0.53 mW/cm² observed at any point 5cm or more from the external surface of the oven.

3.3 RF OUTPUT POWER MEASUREMENT

3.3.1 Test Standard

Test Requirement	47 CFR PART 18
Test Method	FCC/OST MP-5:1986
Power Supply	120VAC/60Hz

3.3.2 EUT Operating mode

Test the EUT in microwave mode with full power.

3.3.3 Test Data

Mass of Water(g)	Mass of the container(g)	ambient temperature (°C)	Initial temperature(°C)	Final temperature(°C)	Heating Time(S)	Output Power(Watt)
1200	280	20.3	9.5	32.3	120	982.8

Formula:

$$P = \frac{4.2 \times m_w (T_2 - T_1) + 0.9 \times m_c (T_2 - T_0)}{t}$$

P is the microwave power output, in watts

M_w is the mass of the water, in grams

M_c is the mass of the container, in grams

T₀ is the ambient temperature, in degrees Celsius

T₁ is Initial temperature of the water, in degrees Celsius

T₂ is final temperature of the water, in degrees Celsius

T is heating time, in seconds, excluding the magnetron filament heating-up time

4. CONDUCTED EMISSION

4.1.1 Conducted Emission Limit

Frequency range (MHz)	Conducted Limit (dB μ V)	
	Quasi-peak	Average
0.15 - 0.50	66 to 56	56 to 46
0.50 - 5	56	46
5 - 30	60	50

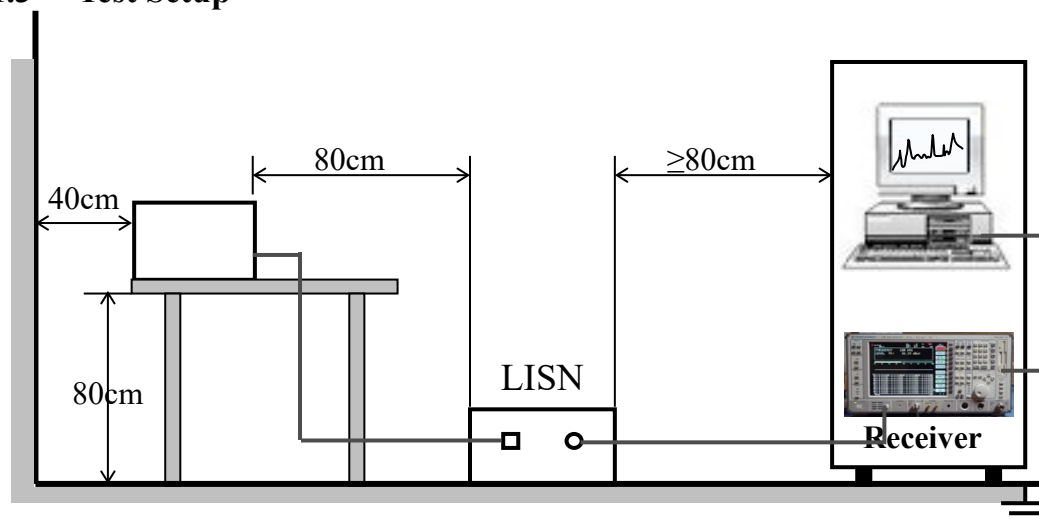
Note:

- The limit decreases linearly with the logarithm of the frequency in the range 0.15 MHz to 0.5 MHz.
- The lower limit is applicable at the transition frequency.

4.1.2 Test Procedure

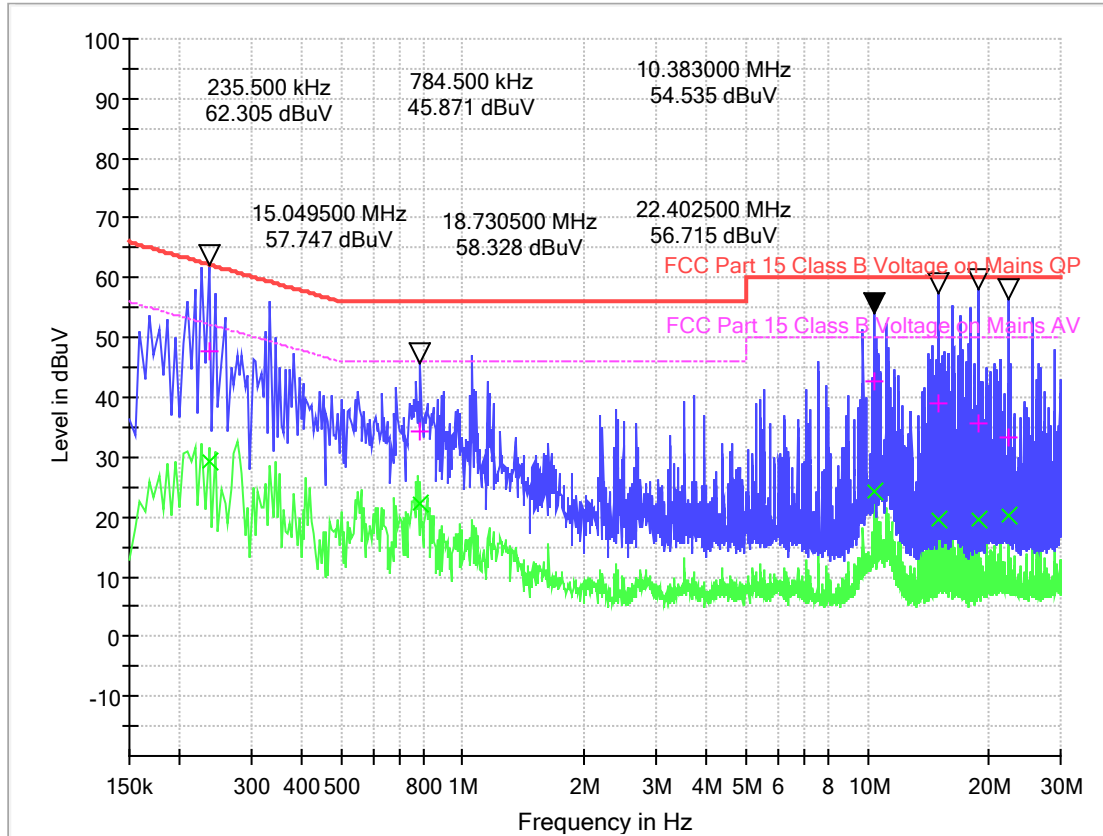
The EUT is placed on a 0.8m high insulating table, which stands on the grounded conducting floor, and keeps 0.4m away from the grounded conducting wall. The EUT is connected to the power mains through a LISN which provides 50 Ω /50 μ H of coupling impedance for the measuring instrument. The Common Antenna is used for the call between the EUT and the System Simulator (SS). A Pulse Limiter is used to protect the measuring instrument. The factors of the whole test system are calibrated to correct the reading.

4.1.3 Test Setup



A. Test Result:

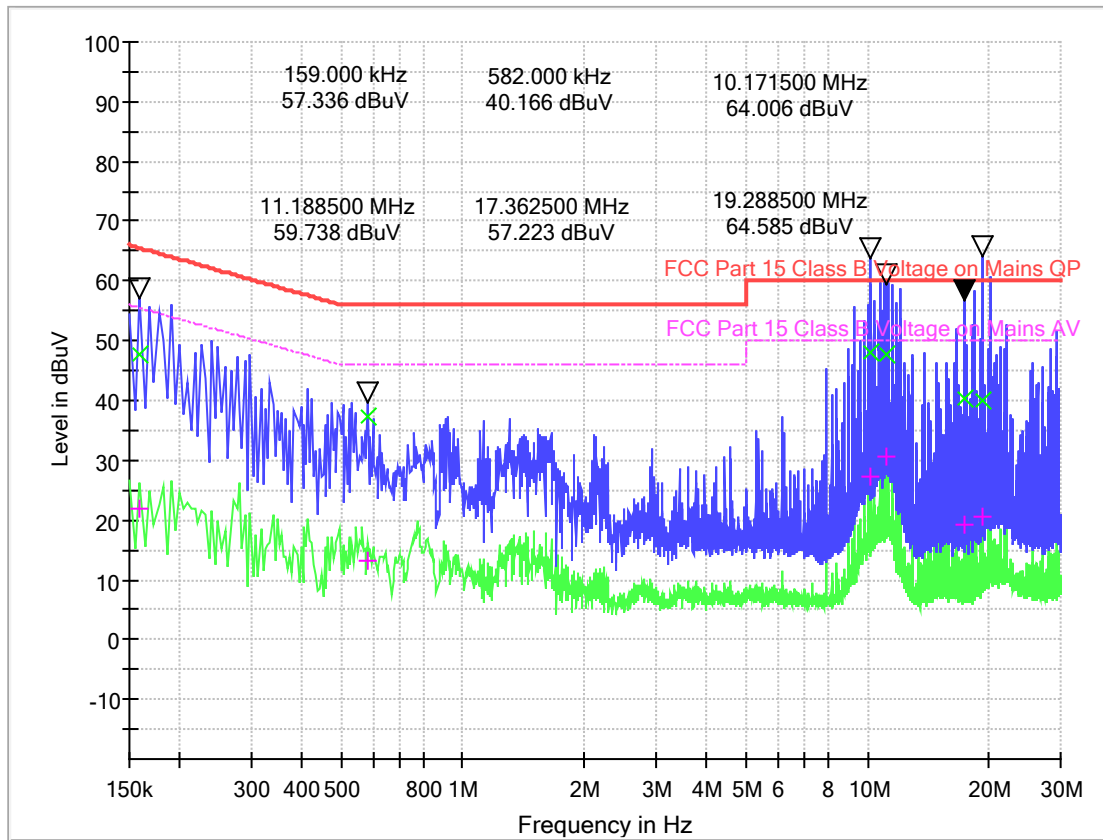
Mains terminal disturbance voltage, Setup1,L phase



(Plot A: L Phase)

Frequency (MHz)	Quasi Peak	Average (dB μ V)	Cable Loss (dB)	Corr. (dB)	Margin - QPK	Limit - QPK	Margin - AV	Limit - AV (dB μ V)
0.235500	47.58	29.43	0.1	10.5	14.67	62.3	22.82	52.3
0.784500	34.28	22.25	0.1	10.4	21.72	56.0	23.75	46.0
10.383000	42.69	24.20	0.5	10.7	17.31	60.0	25.80	50.0
15.049500	38.93	19.55	0.5	11.2	21.07	60.0	30.45	50.0
18.730500	35.69	19.39	0.5	11.1	24.31	60.0	30.61	50.0
22.402500	33.17	20.25	0.5	11.3	26.83	60.0	29.75	50.0

Mains terminal disturbance voltage, Setup 1, N phase



(Plot B: N Phase)

Frequency (MHz)	Quasi Peak	Average (dB μ V)	Cable Loss (dB)	Corr. (dB)	Margin - QPK	Limit - QPK	Margin - AV	Limit - AV (dB μ V)
0.159000	47.62	21.92	0.1	10.6	17.90	65.5	33.60	55.5
0.582000	37.20	13.22	0.1	10.5	18.80	56.0	32.78	46.0
10.171500	48.11	27.29	0.5	10.8	11.89	60.0	22.71	50.0
11.188500	47.61	30.50	0.5	10.9	12.39	60.0	19.50	50.0
17.362500	40.32	19.36	0.5	11.1	19.68	60.0	30.64	50.0
19.288500	39.99	20.67	0.5	11.1	20.01	60.0	29.33	50.0

Test Result: PASS

5. RADIATED EMISSION

5.1.1 Radiated Emission Limits

- (a) ISM equipment operation on a frequency specified in §18.301 is permitted unlimited radiated energy in the band specified for that frequency.
- (b) The field strength levels of emissions which lie outside the bands specified in §18.301, unless otherwise indicated, shall not exceed the following:

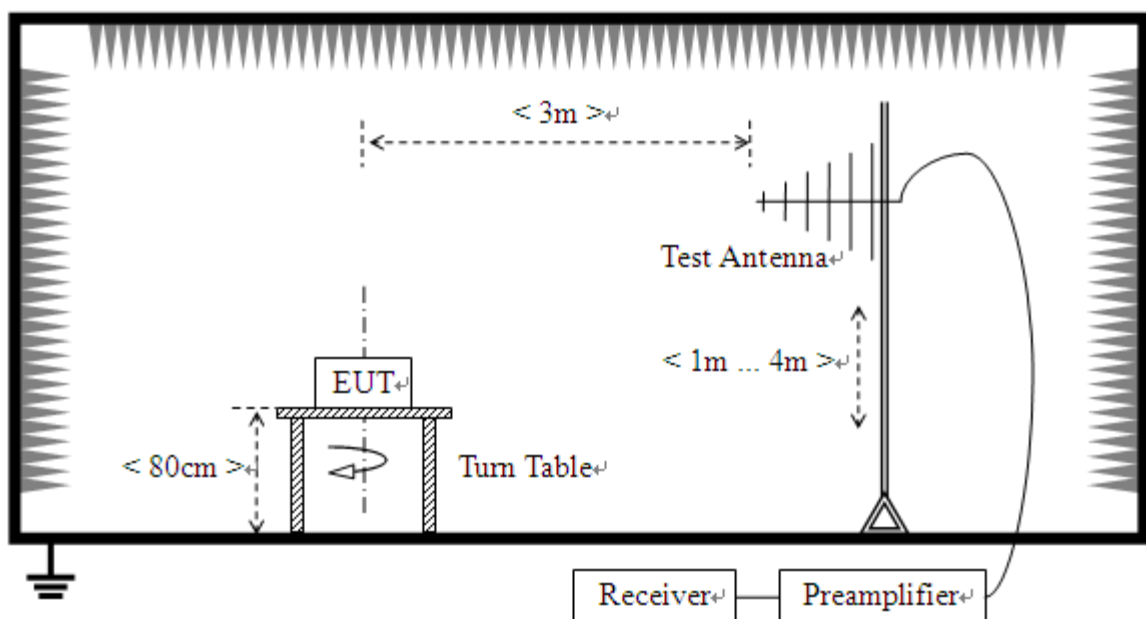
RF Power generated by equipment(watts)	Field strength limit(uV/m) @300m
Below 500	25
500or more	$25 \cdot \text{SQRT}(\text{power}/500)$

Power =982.8W

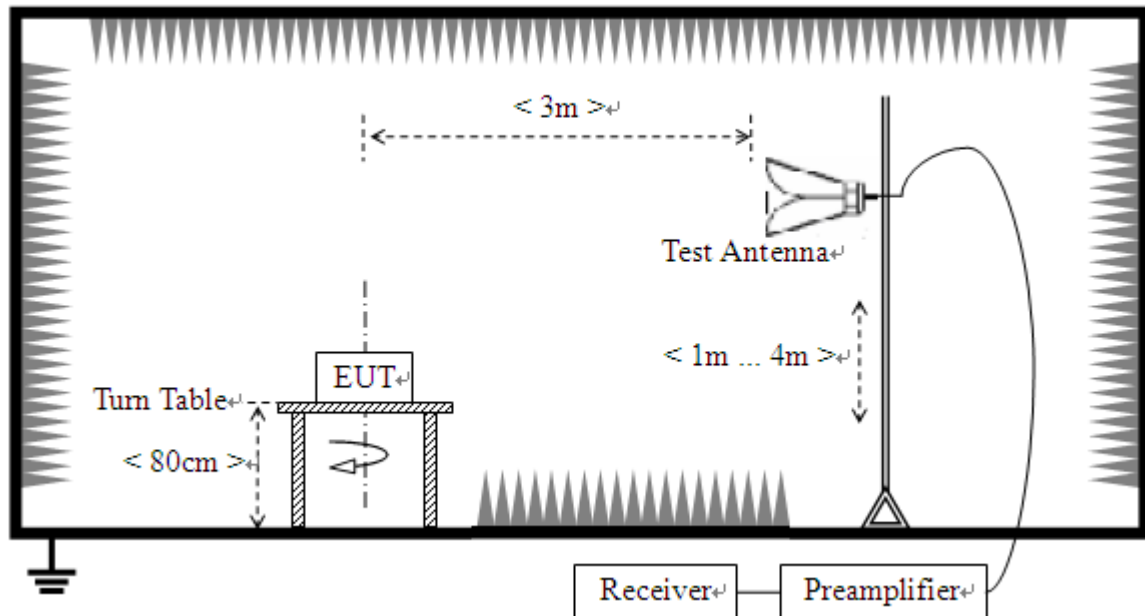
Limit= $20\lg(25 \cdot \text{SQRT}(\text{power}/500)) + 20\lg(300/3)$ @ 3m distance.

5.1.2 Test Setup

For radiated emissions from 30MHz to1GHz



For radiated emissions above 1GHz



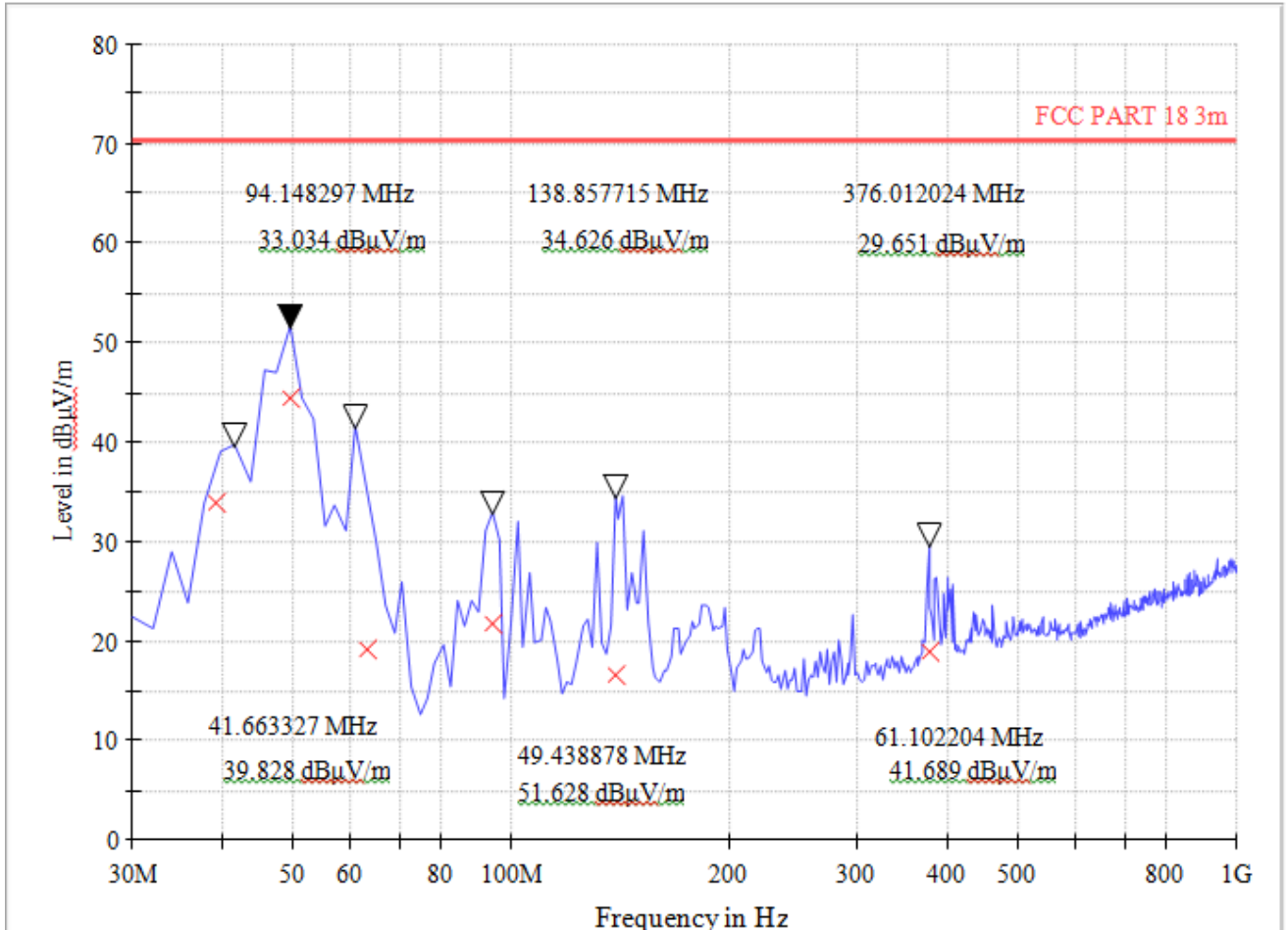
5.1.3 Test Procedure

- The measuring distance of at 3 m shall be used for measurements at frequency up to 1GHz. For frequencies above 1GHz, any suitable measuring distance may be used.
- The EUT was placed on the top of a rotating table 0.8 meters above the ground at a 3 meter open area test site. The table was rotated 360 degrees to determine the position of the highest radiation.
- The height of the equipment or of the substitution antenna shall be 0.8 m; the height of the test antenna shall vary between 1 m to 4 m. Both horizontal and vertical polarizations of the antenna are set to make the measurement
- The initial step in collecting conducted emission data is a spectrum analyzer peak detector mode pre-scanning the measurement frequency range. Significant peaks are then marked and then Quasi Peak detector mode re-measured.
- If the Peak Mode measured value compliance with and lower than Quasi Peak Mode Limit, the EUT shall be deemed to meet QP Limits and then no additional QP Mode measurement performed.
- For the actual test configuration, please refer to the related Item –EUT Test Photos.

Note: Both horizontal and vertical antenna polarities were tested and performed pretest to three orthogonal axis. The worst case emissions were reported

Test Result:

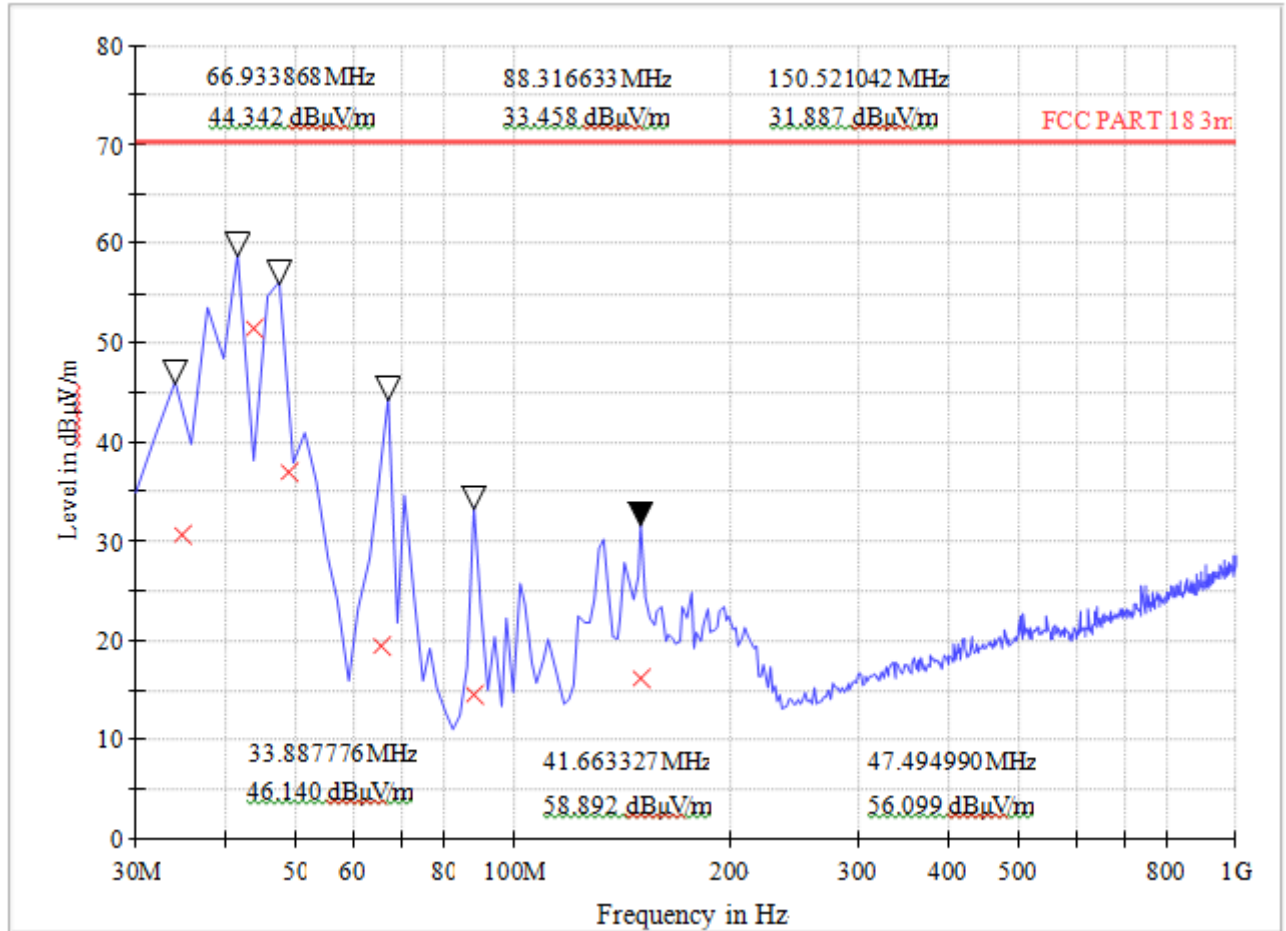
Radiation disturbances, antenna polarization: Setup1, Horizontal



(Plot A: Test Antenna Horizontal 30M - 1G)

Frequency (MHz)	Quasi Peak (dBμV/m)	Bandwidth (kHz)	Antenna height (cm)	Limit (dBμV/m)	Margin (dB)	Antenna	Verdict
39.24	34.03	120.000	100.0	70.89	36.86	Horizontal	Pass
49.68	44.41	120.000	100.0	70.89	26.48	Horizontal	Pass
63.00	29.33	120.000	100.0	70.89	41.56	Horizontal	Pass
93.92	21.72	120.000	100.0	70.89	49.17	Horizontal	Pass
139.52	16.73	120.000	100.0	70.89	54.16	Horizontal	Pass
378.28	19.06	120.000	100.0	70.89	51.83	Horizontal	Pass

Radiation disturbances, antenna polarization:Setup1,Vertical



(Plot B: Test Antenna Vertical 30M - 1G)

Frequency (MHz)	Quasi Peak (dB μ V/m)	Bandwidth (kHz)	Antenna height (cm)	Limit (dB μ V/m)	Margin (dB)	Antenna	Verdict
34.68	46.17	120.000	100.0	70.89	24.72	Vertical	Pass
43.72	36.57	120.000	100.0	70.89	34.32	Vertical	Pass
48.72	41.44	120.000	100.0	70.89	29.45	Vertical	Pass
65.84	42.07	120.000	100.0	70.89	28.82	Vertical	Pass
88.44	42.60	120.000	100.0	70.89	28.29	Vertical	Pass
150.04	46.98	120.000	100.0	70.89	23.91	Vertical	Pass

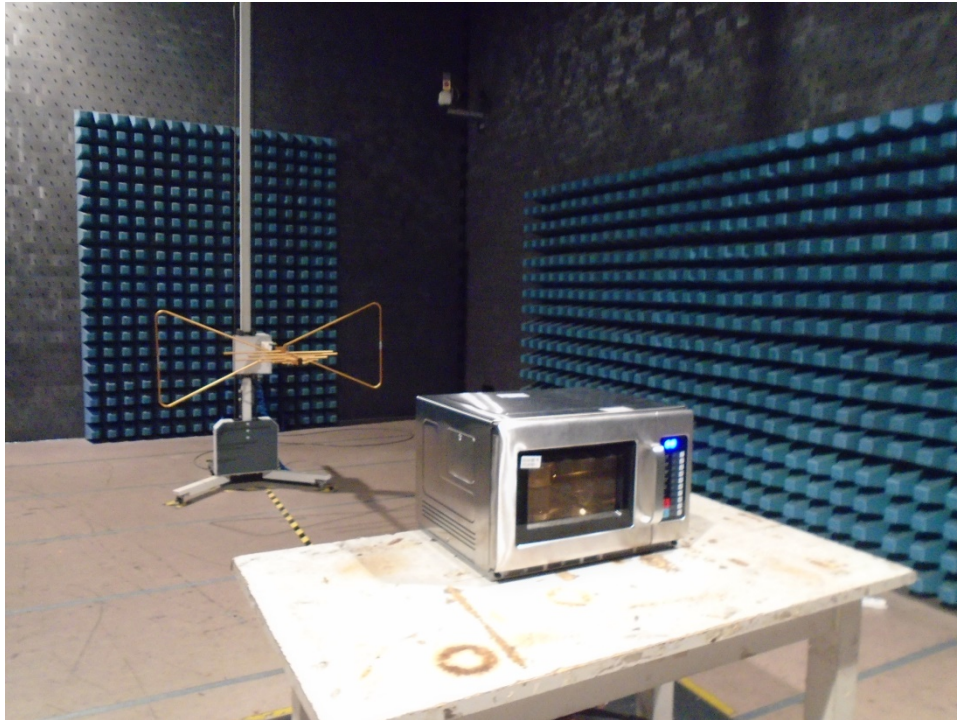
**Above 1GHz, Setup1**

NO.	Freq. [MHz]	Level [dB μ V/m]	Factor [dB]	Limit [dB μ V/m]	Margin [dB]	Height [cm]	Angle [°]	Polarity
1	1845.96	46.73	-12.79	70.89	24.16	100	44	Vertical
2	1888.47	47.82	-12.36	70.89	23.07	100	61	Vertical
3	1994.75	56.64	-12.78	70.89	14.25	100	160	Vertical
4	2215.80	59.50	-11.77	70.89	11.39	100	302	Vertical
5	2364.59	56.98	-11.03	70.89	13.91	100	132	Vertical
6	2823.71	48.95	-9.32	70.89	21.94	100	27	Vertical

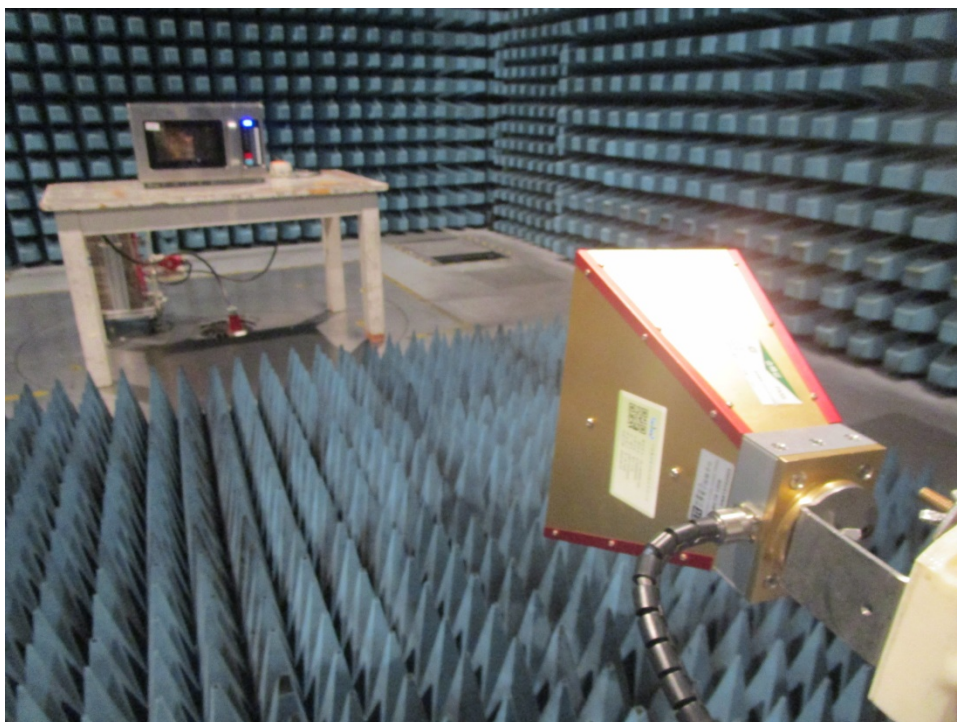
NO.	Freq. [MHz]	Level [dB μ V/m]	Factor [dB]	Limit [dB μ V/m]	Margin [dB]	Height [cm]	Angle [°]	Polarity
1	1994.75	52.97	-12.78	70.89	17.92	100	41	Horizontal
2	2249.81	53.40	-11.69	70.89	17.49	100	210	Horizontal
3	2377.34	52.26	-10.92	70.89	18.63	100	312	Horizontal
4	2857.71	48.43	-9.09	70.89	22.46	100	34	Horizontal
5	3784.45	51.48	-5.81	70.89	19.41	100	351	Horizontal
6	4898.22	53.51	-1.73	70.89	17.38	100	17	Horizontal

APPENDIX I: PHOTOGRAPHS OF EMC TEST CONFIGURATION

1. Radiated Emission Measurement below 1GHz



2. Radiated Emission Measurement above 1GHz



3. Conducted emission at AC mains input/output port Measurement



4. Radiation Hazard Test



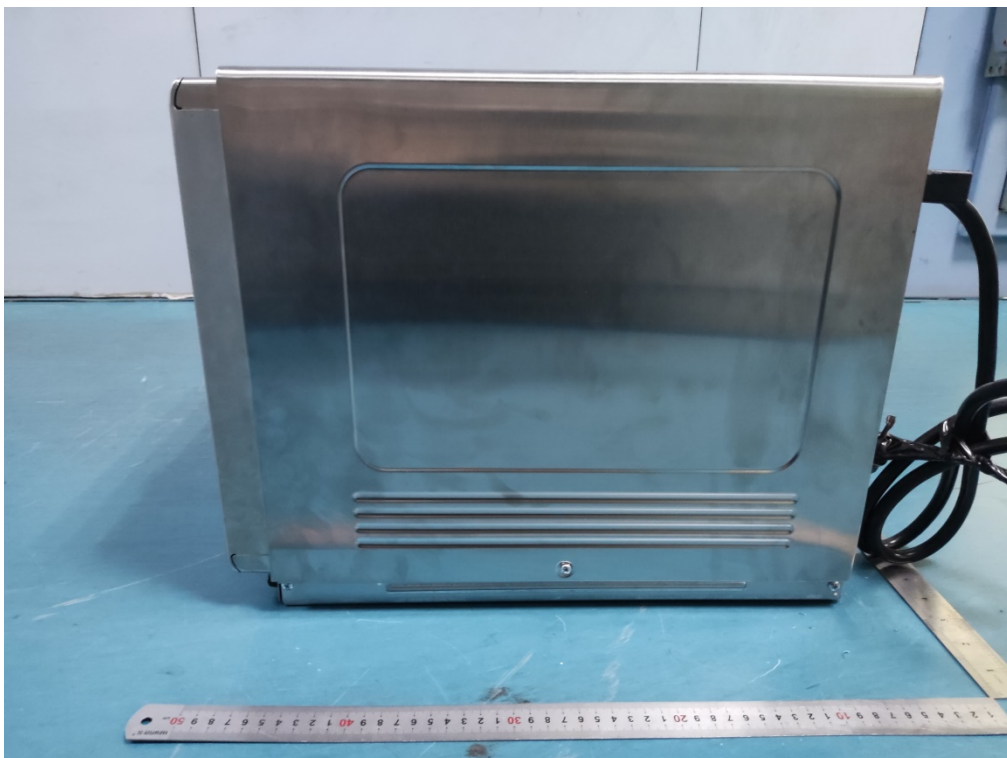


APPENDIX II: PHOTOGRAPHS OF PRODUCT PHOTO

External Photo

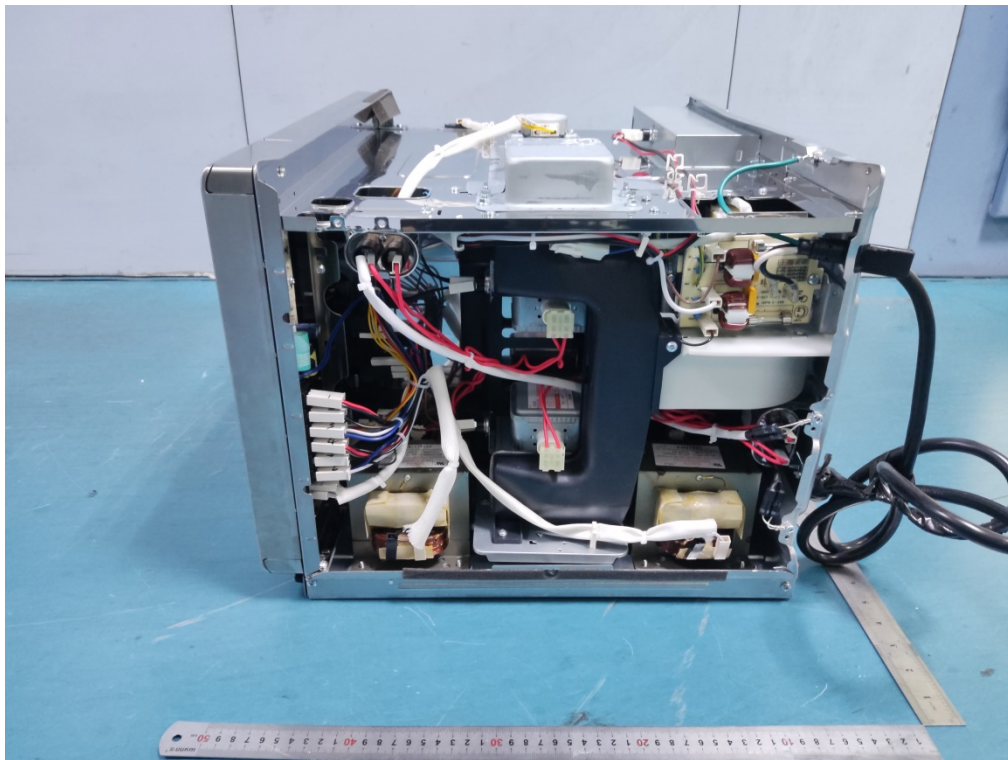


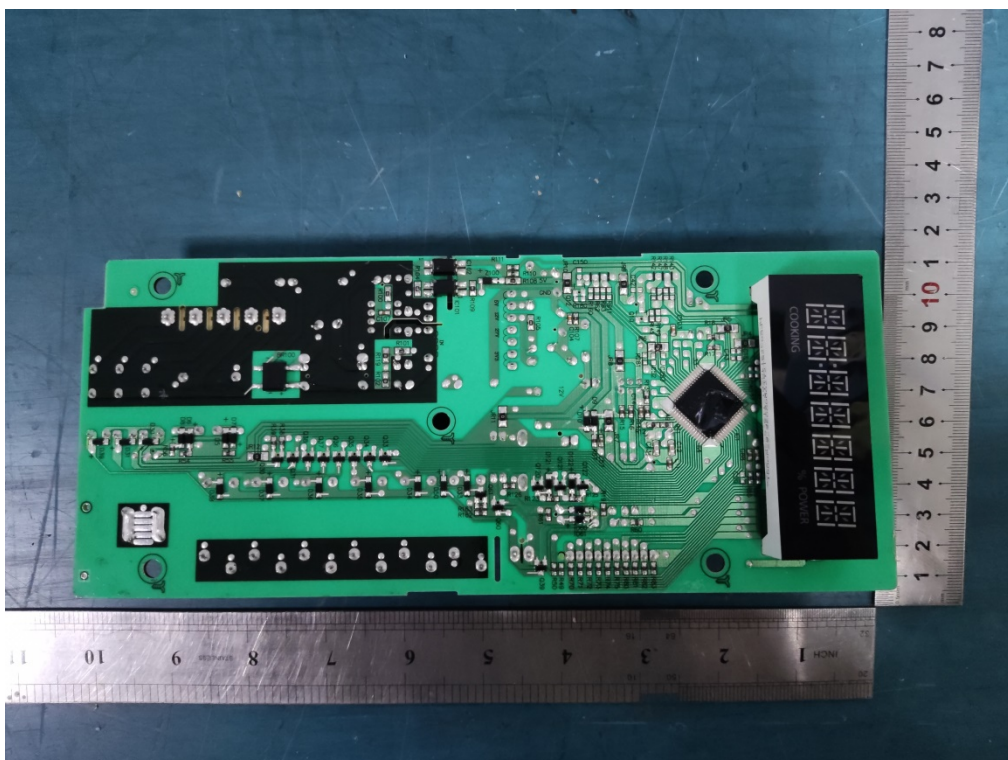
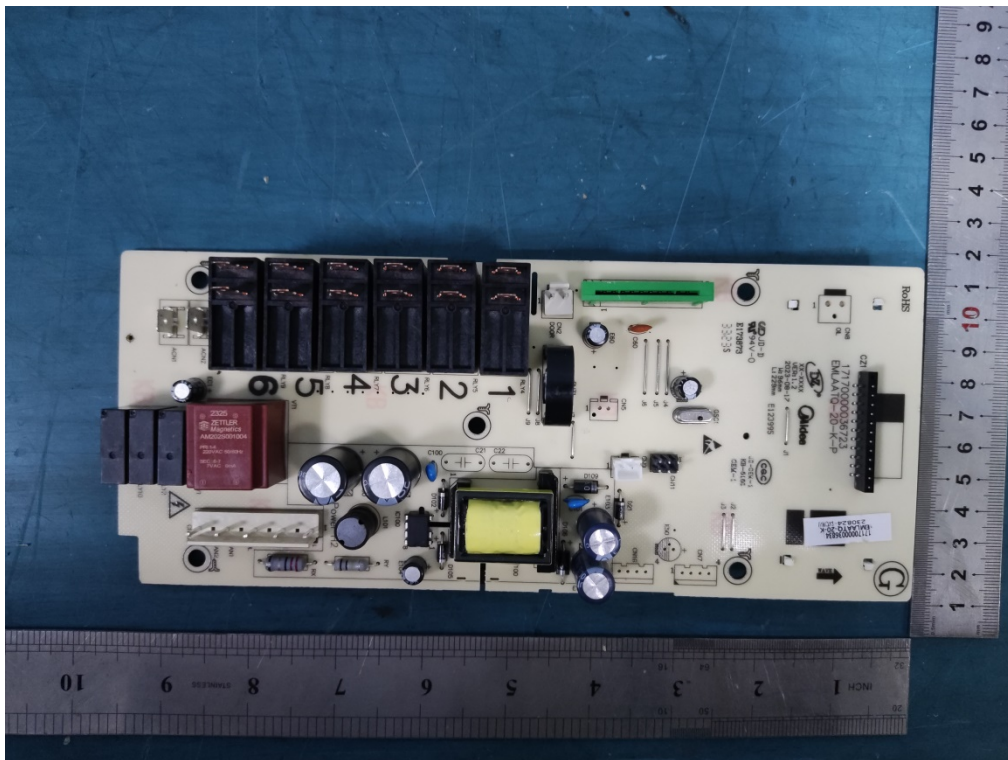


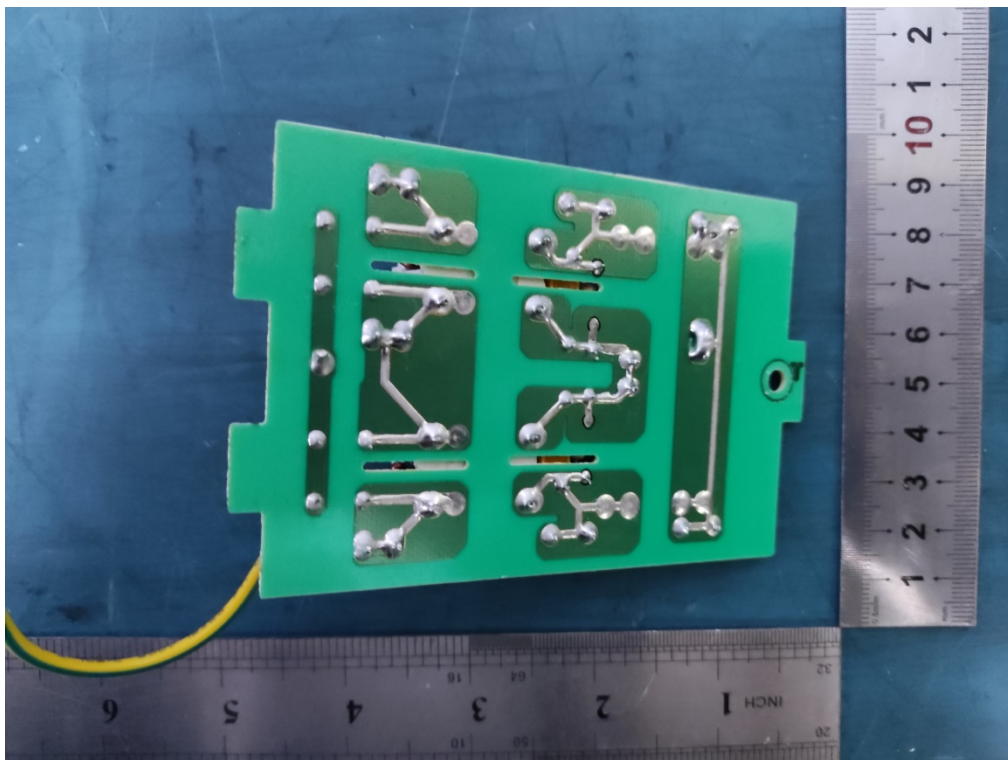
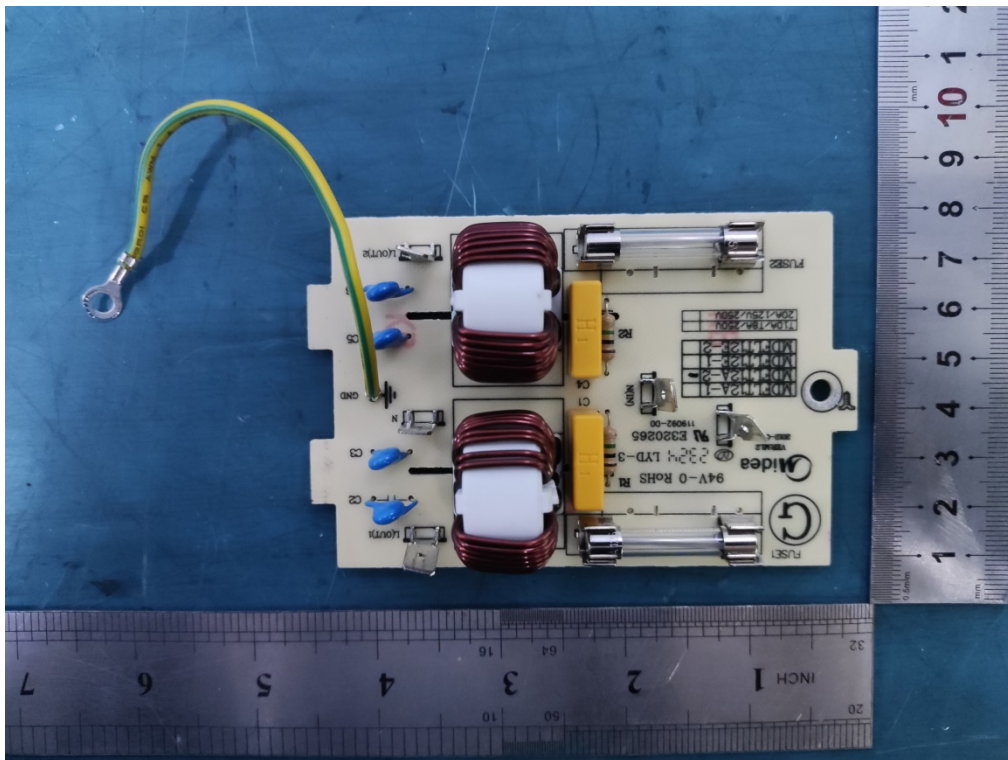


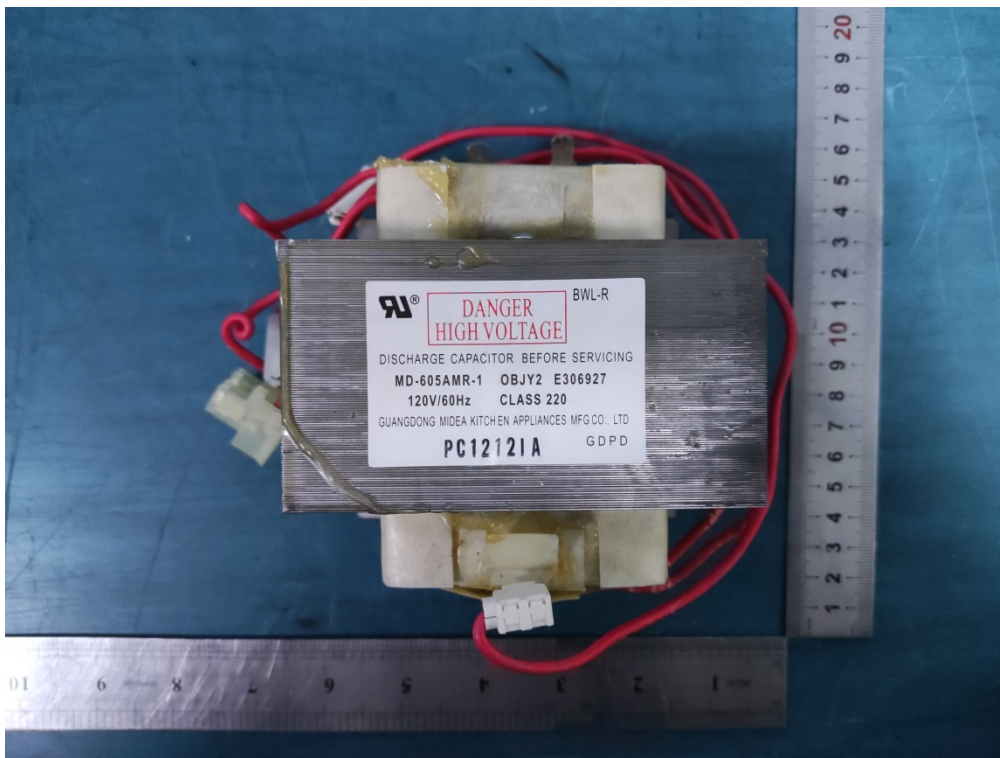


Internal Photo









*** End of Report ***