




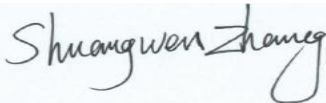

# FCC SAR TEST REPORT

**Report No.:** SET2015-14915  
**Product:** Mobile phone  
**Brand Name:** Haier  
**Model No.:** I70  
**FCC ID:** SG720151015I70  
**Applicant:** Haier Telecom (Qingdao) Co.,Ltd.  
**Address:** No.1 Haier Road, Hi-tech Zone, Qingdao, China  
**Issued by:** CCIC-SET  
**Lab Location:** Electronic Testing Building, Shahe Road, Xili, Nanshan District, Shenzhen, 518055, P. R. China  
**Tel:** 86 755 26627338      **Fax:** 86 755 26627238  
**Mail:** manager@ccic-set.com      **Website:** <http://www.ccic-set.com>

This test report consists of **123** pages in total. It may be duplicated completely for legal use with the approval of the applicant. It should not be reproduced except in full, without the written approval of our laboratory. The client should not use it to claim product endorsement by CCIC-SET. The test results in the report only apply to the tested sample. The test report shall be invalid without all the signatures of testing engineers, reviewer and approver. Any objections must be raised to CCIC-SET within 15 days since the date when the report is received. It will not be taken into consideration beyond this limit.



## Test Report

**Product.** .....: Mobile phone  
**Model No.** .....: I70  
**Brand Name**.....: Haier  
**FCC ID**.....: SG720151015I70  
**Applicant**.....: Haier Telecom (Qingdao) Co.,Ltd.  
**Applicant Address**.....: No.1 Haier Road, Hi-tech Zone, Qingdao, China  
**Manufacturer**.....: Haier Telecom (Qingdao) Co.,Ltd.  
**Manufacturer Address:** No.1 Haier Road, Hi-tech Zone, Qingdao, China  
**Test Standards**.....: **47CFR § 2.1093-** Radiofrequency Radiation Exposure Evaluation: Portable Devices;  
**ANSI C95.1-1992:** Safety Levels with Respect to Human Exposure to Radio Frequency Electromagnetic Fields, 3 kHz – 300 GHz.( IEEE Std C95.1-1991)  
**IEEE 1528-2013:** IEEE Recommended Practice for Determining the Peak Spatial-Average Specific Absorption Rate (SAR) in the Human Body Due to Wireless Communications Devices: Experimental Techniques;  
**Test Result**.....: Pass  
**Tested by** .....:  2015-10-20  
Chun Mei, Test Engineer  
**Reviewed by**.....:  2015-10-20  
Shuangwen Zhang, Senior Engineer  
**Approved by**.....:  2015-10-20  
Wu Lian, Manager

## Contents

<b>1. GENERAL CONDITIONS</b>	4
<b>2. ADMINISTRATIVE DATA</b>	5
2.1. Identification of the Responsible Testing Laboratory	5
2.2. Identification of the Responsible Testing Location(s)	5
2.3. Organization Item	5
2.4. Identification of Applicant	5
2.5. Identification of Manufacture	5
<b>3. EQUIPMENT UNDER TEST (EUT)</b>	6
<b>4. SAR SUMMAY</b>	7
<b>5. Specific Absorption Rate(SAR)</b>	8
5.1. Introduction	8
5.2. SAR Definition	8
5.3. Phantoms	9
5.4. Device Holder	9
5.5. Probe Specification	10
<b>6. OPERATIONAL CONDITIONS DURING TEST</b>	11
6.1. Schematic Test Configuration	12
6.2. SAR Measurement System	12
6.3. Equipments and results of validation testing	13
6.4. SAR measurement procedure	14
6.5. Antennas position and test position	17
<b>7. CHARACTERISTICS OF THE TEST</b>	18
7.1. Applicable Limit Regulations	18
7.2. Applicable Measurement Standards	18
<b>8. LABORATORY ENVIRONMENT</b>	19
<b>9. CONDUCTED RF OUTPUT POWER</b>	19
<b>10. TEST RESULTS</b>	28
<b>11. MEASUREMENT UNCERTAINTY</b>	32
<b>12. MAIN TEST INSTRUMENTS</b>	35

This Test Report consists of the following Annexes:

<b>Annex A: Test Layout</b>	36
<b>Annex B: Sample Photographs</b>	43
<b>Annex C: System Performance Check Data and Highest SAR Plots</b>	45
<b>Annex D: Calibration Certificate of Probe and Dipoles</b>	76

## **1. GENERAL CONDITIONS**

**1.1 This report only refers to the item that has undergone the test.**

**1.2 This report standalone does not constitute or imply by its own an approval of the product by the certification Bodies or competent Authorities.**

**1.3 This document is only valid if complete; no partial reproduction can be made without written approval of CCIC-SET**

**1.4 This report cannot be used partially or in full for publicity and/or promotional purposes without previous written approval of CCIC-SET and the Accreditation Bodies, if it applies.**



## 2. Administrative Date

### 2.1. Identification of the Responsible Testing Laboratory

**Company Name:** CCIC-SET

**Department:** EMC & RF Department

**Address:** Electronic Testing Building, Shahe Road, Nanshan District,  
ShenZhen, P. R. China

**Telephone:** +86-755-26629676

**Fax:** +86-755-26627238

**Responsible Test Lab Managers:** Mr. Wu Li'an

### 2.2. Identification of the Responsible Testing Location(s)

**Company Name:** CCIC-SET

**Address:** Electronic Testing Building, Shahe Road, Nanshan District,  
Shenzhen, P. R. China

### 2.3. Organization Item

**CCIC-SET Report No.:** SET2015-14915

**CCIC-SET Project Leader:** Mr. Li Sixiong

**CCIC-SET Responsible for accreditation scope:** Mr. Wu Li'an

**Start of Testing:** 2015-10-09

**End of Testing:** 2015-10-11

### 2.4. Identification of Applicant

**Company Name:** Haier Telecom (Qingdao) Co.,Ltd.

**Address:** No.1 Haier Road, Hi-tech Zone, Qingdao, China

### 2.5. Identification of Manufacture

**Company Name:** Haier Telecom (Qingdao) Co.,Ltd.

**Address:** No.1 Haier Road, Hi-tech Zone, Qingdao, China

**Notes:** This data is based on the information by the applicant.

### 3. Equipment Under Test (EUT)

#### 3.1. Identification of the Equipment under Test

**Sample Name:** Mobile phone

**Type Name:** I70

**Brand Name:** Haier

<b>General description:</b>	Support Band	GSM850MHz/1900MHz/900MHz/1800MHz WCDMA 850MHz/1900MHz, WIFI, BT
	Test Band	GSM 850MHz/ GSM 1900MHz, GPRS 850MHz/ GPRS 1900MHz, WCDMA 850MHz/ WCDMA 1900MHz, WIFI 802.11b
	Multislot Class	GPRS: Class 12 ; EDGE: Class 12
	GPRS Class	Class B
	Development Stage	Identical Prototype
	Accessories	Power Supply
	Battery type	3.80V 2000mAh
	Antenna type	Inner Antenna
	Operation mode	GSM / GPRS /WCDMA /WIFI
	Modulation mode	GSM(GMSK),UMTS(QPSK), WIFI(OFDM/DSSS)
	Max. RF Power	31.59dBm
	Max. SAR Value	Head: 0.528W/kg; Body: 0.485 W/kg; Hotspot: 0.485 W/kg

#### NOTE:

- The above EUT's information was declared by manufacturer. Please refer to the specifications or user's manual for more detailed description.
- This device supports GPRS operation up to class12 (max.uplin:4, max.downlink:4, total timeslots:5). This device supports EDGE operation up to class12(max.uplin:4, max.downlink:4, total timeslots:5)
- The EUT proximity Sensor not use to modify the power, only for black the screen when the user is on the phone.

## 4 SAR SUMMARY

### Highest Standalone SAR Summary

Exposure Position	Frequency Band	Scaled 1g-SAR(W/kg)	Highest Scaled 1g-SAR(W/kg)
Head	GSM850	0.027	0.528
	GSM1900	0.069	
	WCDMA Band II	0.154	
	WCDMA Band V	0.039	
	WIFI	0.528	
Body-worn Accessory (10mm Gap)	GSM850	0.068	0.485
	GSM1900	0.137	
	WCDMA Band II	0.443	
	WCDMA Band V	0.117	
	WIFI	0.485	
Hotspot Accessory (10mm Gap)	GSM850	0.060	0.485
	GSM1900	0.133	
	WCDMA Band II	0.443	
	WCDMA Band V	0.117	
	WIFI	0.485	

### Highest Simultaneous SAR Summary

Exposure Position	Frequency Band	Scaled 1g-SAR(W/kg)	Highest Scaled 1g-SAR(W/kg)
Head	GSM850&WIFI	0.025+0.528	0.682
	GSM1900&WIFI	0.054+0.528	
	WCDMA Band II &WIFI	0.154+0.528	
	WCDMA Band V &WIFI	0.036+0.528	
Body-worn Accessory (10mm Gap)	GSM850&WIFI	0.068+0.485	0.928
	GSM1900&WIFI	0.137+0.485	
	WCDMA Band II &WIFI	0.443+0.485	
	WCDMA Band V &WIFI	0.117+0.485	
Hotspot Accessory (10mm Gap)	GSM850&WIFI	0.060+0.485	0.928
	GSM1900&WIFI	0.121+0.485	
	WCDMA Band II &WIFI	0.443+0.485	
	WCDMA Band V &WIFI	0.117+0.485	

## 5 Specific Absorption Rate (SAR)

### 5.1 Introduction

SAR is related to the rate at which energy is absorbed per unit mass in an object exposed to a radio field. The SAR distribution in a biological body is complicated and is usually carried out by experimental techniques or numerical modeling. The standard recommends limits for two tiers of groups, occupational/controlled and general population/uncontrolled, based on a person's awareness and ability to exercise control over his or her exposure. In general, occupational/controlled exposure limits are higher than the limits for general population/uncontrolled.

### 5.2 SAR Definition

The SAR definition is the time derivative (rate) of the incremental energy (dW) absorbed by (dissipated in) an incremental mass (dm) contained in a volume element (dv) of a given density ( $\rho$ ). The equation description is as below:

$$\text{SAR} = \frac{d}{dt} \left( \frac{dW}{dm} \right) = \frac{d}{dt} \left( \frac{dW}{\rho dv} \right)$$

SAR is expressed in units of Watts per kilogram (W/kg)

SAR measurement can be either related to the temperature elevation in tissue by

$$\text{SAR} = C \frac{\delta T}{\delta t}$$

where C is the specific heat capacity,  $\delta T$  is the temperature rise and  $\delta t$  the exposure duration, or related to the electrical field in the tissue by

$$\text{SAR} = \frac{\sigma |E|^2}{\rho}$$

where  $\sigma$  is the conductivity of the tissue,  $\rho$  is the mass density of the tissue and E is the rms electrical field strength.

However for evaluating SAR of low power transmitter, electrical field measurement is typically applied.



### 5.3 Phantoms

The phantom used for all tests i.e. for both system checks and device testing, was the twin-headed "SAM Phantom", manufactured by SATIMO. The SAM twin phantom is a fiberglass shell phantom with 2mm shell thickness (except the ear region, where shell thickness increases to 6mm).

System checking was performed using the flat section, whilst Head SAR tests used the left and right head profile sections. Body SAR testing also used the flat section between the head profiles.

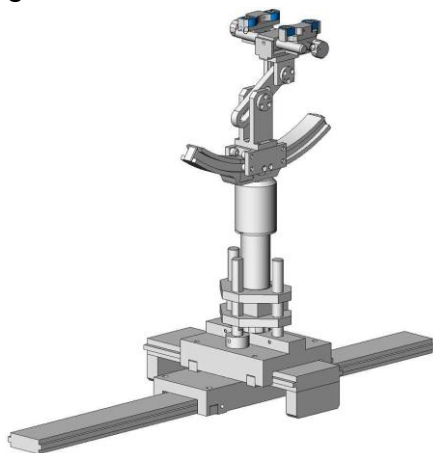


SAM Twin Phantom

### 5.4 Device Holder

The device was placed in the device holder (illustrated below) that is supplied by SATIMO as an integral part of the COMOSAR test system.

The device holder is designed to cope with the different positions given in the standard. It has two scales for device rotation (with respect to the body axis) and device inclination (with respect to the line between the ear reference points). The rotation centers for both scales is the ear reference point (ERP). Thus the device needs no repositioning when changing the angles.



Device holder

## 5.5 Probe Specification

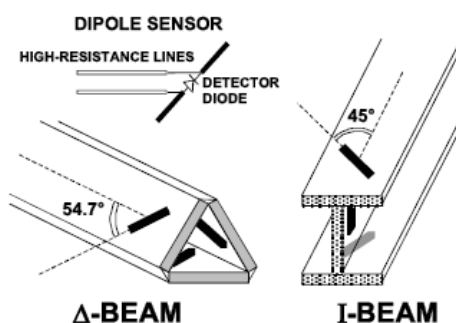


Construction	Symmetrical design with triangular core Interleaved sensors Built-in shielding against static charges PEEK enclosure material (resistant to organic solvents, e.g., DGBE)
Calibration	ISO/IEC 17025 calibration service available.
Frequency	700 MHz to 3 GHz; Linearity: $\pm 0.5$ dB (700 MHz to 3 GHz)
Directivity	$\pm 0.25$ dB in HSL (rotation around probe axis) $\pm 0.5$ dB in tissue material (rotation normal to probe axis)
Dynamic Range	1.5 $\mu$ W/g to 100 mW/g; Linearity: $\pm 0.5$ dB
Dimensions	Overall length: 330 mm (Tip: 20 mm) Tip diameter: 5 mm Distance from probe tip to dipole centers: <2.7 mm
Application	General dosimetry up to 3 GHz Dosimetry in strong gradient fields Compliance tests of mobile phones
Compatibility	COMOSAR

### Isotropic E-Field Probe

The isotropic E-Field probe has been fully calibrated and assessed for isotropicity, and boundary effect within a controlled environment. Depending on the frequency for which the probe is calibrated the method utilized for calibration will change.

The E-Field probe utilizes a triangular sensor arrangement as detailed in the diagram below:



## 6 OPERATIONAL CONDITIONS DURING TEST

### 6.1 Schematic Test Configuration

During SAR test, EUT was operating in Traffic Mode (Channel Allocated) at Normal Voltage Condition. A communication link is set up with a System Simulator (SS) by air link, and a call is established. The EUT was commanded to operate at maximum transmitting power.

The EUT should use its internal transmitter. The antenna(s), battery and accessories shall be those specified by the manufacturer. The EUT battery must be fully charged and checked periodically during the test to ascertain uniform power output. If a wireless link was used, the antenna connected to the output of the base station simulator shall be placed at least 50 cm away from the handset.

The signal transmitted by the simulator to the antenna feeding point should be lower than the output power level of the handset by at least 35 dB

### 6.2 SAR Measurement System

The SAR measurement system being used is the SATIMO system, the system is controlled remotely from a PC, which contains the software to control the robot and data acquisition equipment. The software also displays the data obtained from test scans.

In operation, the system first does an area (2D) scan at a fixed depth within the liquid from the inside wall of the phantom. When the maximum SAR point has been found, the system will then carry out a 3D scan centred at that point to determine volume averaged SAR level.

#### 6.2.1 Tissue Dielectric Parameters for Head and Body Phantoms

The head tissue dielectric parameters recommended by the IEEE SCC-34/SC-2 in P1528 have been incorporated in the following table. These head parameters are derived from planar layer models simulating the highest expected SAR for the dielectric properties and tissue thickness Power drifts in a human head. Other head and body tissue parameters that have not been specified in P1528 are derived from the tissue dielectric parameters computed from the 4-Cole-Cole equations described in Reference [12] and extrapolated according to the head parameters specified in P1528.

Table 1: Recommended Dielectric Performance of Tissue

Ingredients (% by weight )	Frequency (MHz)									
	450		835		915		1900		2450	
Tissue Type	Head	Body	Head	Body	Head	Body	Head	Body	Head	Body
Water	38.56	51.16	41.46	52.4	41.05	56.0	54.9	40.4	62.7	73.2
Salt (Nacl)	3.95	1.49	1.45	1.4	1.35	0.76	0.18	0.5	0.5	0.04
Sugar	56.32	46.78	56.0	45.0	56.5	41.76	0.0	58.0	0.0	0.0
HEC	0.98	0.52	1.0	1.0	1.0	1.21	0.0	1.0	0.0	0.0

Bactericide	0.19	0.05	0.1	0.1	0.1	0.27	0.0	0.1	0.0	0.0
Triton x-100	0.0	0.0	0.0	0.0	0.0	0.0	0.0	0.0	36.8	0.0
DGBE	0.0	0.0	0.0	0.0	0.0	0.0	44.92	0.0	0.0	26.7
Dielectric Constant	43.42	58.0	42.54	56.1	42.0	56.8	39.9	54.0	39.8	52.5
Conductivity (s/m)	0.85	0.83	0.91	0.95	1.0	1.07	1.42	1.45	1.88	1.78

Table 2 Recommended Tissue Dielectric Parameters

Frequency (MHz)	Head Tissue		Body Tissue	
	$\epsilon_r$	$\sigma$ (S/m)	$\epsilon_r$	$\sigma$ (S/m)
150	52.3	0.76	61.9	0.80
300	45.3	0.87	58.2	0.92
450	43.5	0.87	56.7	0.94
835	41.5	0.90	55.2	0.97
900	41.5	0.97	55.0	1.05
915	41.5	0.98	55.0	1.06
1450	40.5	1.20	54.0	1.30
1610	40.3	1.29	53.8	1.40
1800-2000	40.0	1.40	53.3	1.52
2450	39.2	1.80	52.7	1.95
3000	38.5	2.40	52.0	2.73
5800	35.3	5.27	48.2	6.00

### 6.2.2 Stimulant liquids

For measurements against the phantom head, the “cheek” and “tilt” position on both the left hand and the right hand sides of the phantom. For body-worn measurements, the EUT was tested against flat phantom representing the user body. The EUT was put on in the belt holder. Stimulant liquids that are used for testing at frequencies of GSM 850MHz/1900MHz, WCDMA850MHz/1900MHz, Wi-Fi 2.4GHz, which are made mainly of sugar, salt and water solutions may be left in the phantoms.

Table 3: Dielectric Performance of Head Tissue Simulating Liquid

Temperature: 23.2°C; Humidity: 64%;			
/	Frequency	Permittivity $\epsilon$	Conductivity $\sigma$ (S/m)
Target value	835MHz	$41.5 \pm 5\%$	$0.90 \pm 5\%$
Validation value (Oct. 09th, 2015)	835MHz	41.32	0.88
Target value	1900MHz	$40.0 \pm 5\%$	$1.40 \pm 5\%$
Validation value (Oct. 10th, 2015)	1900MHz	39.84	1.39
Target value	2450MHz	$39.2 \pm 5\%$	$1.80 \pm 5\%$
Validation value (Oct. 11th, 2015)	2450MHz	38.96	1.80

Table 4: Dielectric Performance of Body Tissue Simulating Liquid

Temperature: 23.2°C; Humidity: 64%;			
/	Frequency	Permittivity $\epsilon$	Conductivity $\sigma$ (S/m)
Target value	835MHz	$55.2 \pm 5\%$	$0.97 \pm 5\%$
Validation value (Oct. 09th, 2015)	835MHz	54.82	0.95
Target value	1900MHz	$53.3 \pm 5\%$	$1.52 \pm 5\%$
Validation value (Oct. 10th, 2015)	1900MHz	52.87	1.50
Target value	2450MHz	$52.7 \pm 5\%$	$1.95 \pm 5\%$
Validation value (Oct. 11th, 2015)	2450MHz	52.47	1.94

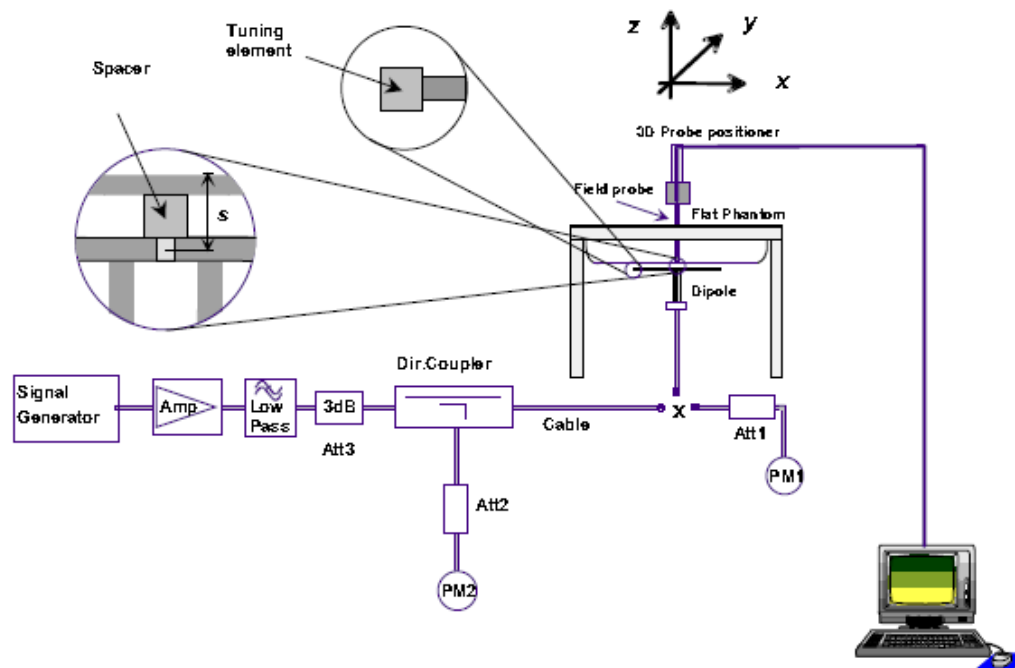


Fig. 1 Configuration of body tissue

### 6.3 Results of validation testing

Prior to the assessment, the system validation kit was used to test whether the system was operating within its specifications of  $\pm 10\%$ . The validation results are tabulated below. And also the corresponding SAR plot is attached as well in the SAR plots files.

The following procedure, recommended for performing validation tests using box phantoms is based on the procedures described in the IEEE standard P1528. Setup according to the setup diagram below :



With the SG and Amp and with directional coupler in place, set up the source signal at the relevant frequency and use a power meter to measure the power at the end of the SMA cable that you intend to connect to the balanced dipole. Adjust the SG to make this, say, 0.25W (24 dBm). If this level is too high to read directly with the power meter sensor, insert a calibrated attenuator (e.g. 10 or 20 dB) and make a suitable correction to the power meter reading.

Note 1: In this method, the directional coupler is used for monitoring rather than setting the exact feed power level. If, however, the directional coupler is used for power measurement, you should check the frequency range and power rating of the coupler and measure the coupling factor (referred to output) at the test frequency using a VNA.

Note 2: Remember that the use of a 3dB attenuator (as shown in Figure 8.1 of P1528) means that you need an RF amplifier of 2 times greater power for the same feed power. The other issue is the cable length. You might get up to 1dB of loss per meter of cable, so the cable length after the coupler needs to be quite short.

Note 3: For the validation testing done using CW signals, most power meters are suitable. However, if you are measuring the output of a modulated signal from either a signal generator or a handset, you must ensure that the power meter correctly reads the modulated signals.

The measured 1-gram averaged SAR values of the device against the phantom are provided in Tables 5 and Table 6. The humidity and ambient temperature of test facility were 64% and 23.2°C respectively. The body phantom were full of the body tissue simulating liquid. The EUT was supplied with full-charged battery for each measurement.

The distance between the back of the EUT and the bottom of the flat phantom is 10 mm (taking into account of the IEEE 1528 and the place of the antenna).

Table 5: Head SAR system validation (1g)

Frequency	Duty cycle	Target value (W/kg)	Test value (W/kg)	
			250 mW	1W
835MHz(Oct. 09th, 2015)	1:1	$9.77 \pm 10\%$	2.41	9.64
1900MHz(Oct. 10th, 2015)	1:1	$40.37 \pm 10\%$	9.87	39.48
2450MHz(Oct. 11th, 2015)	1:1	$53.60 \pm 10\%$	13.18	52.72

Table 6: Body SAR system validation (1g)

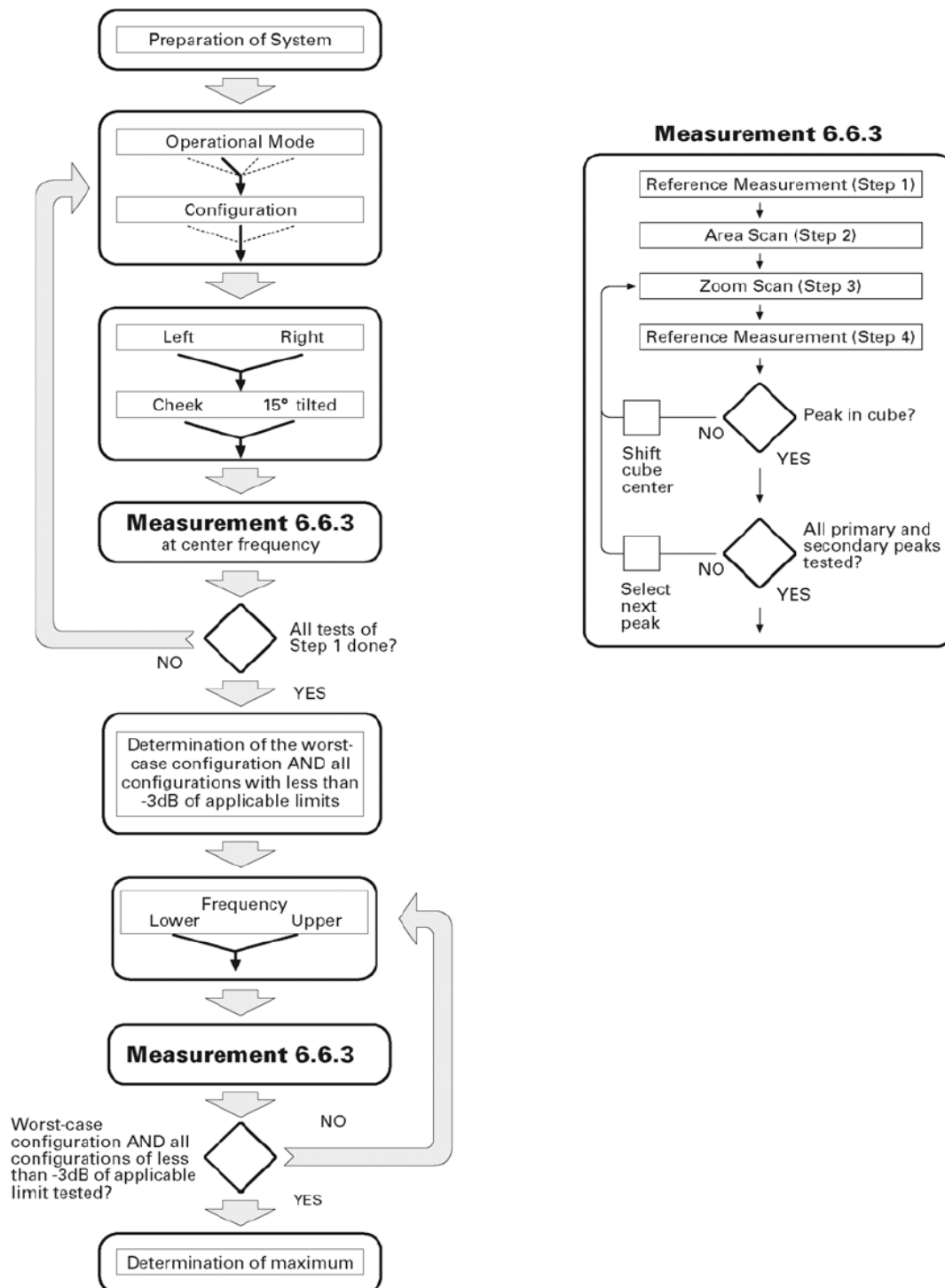
Frequency	Duty cycle	Target value (W/kg)	Test value (W/kg)	
			250 mW	1W
835MHz(Oct. 09th, 2015)	1:1	$10.31 \pm 10\%$	2.54	10.16
1900MHz(Oct. 10th, 2015)	1:1	$40.81 \pm 10\%$	10.13	40.52
2450MHz(Oct. 11th, 2015)	1:1	$52.66 \pm 10\%$	13.07	52.28

\* Note: Target value was referring to the measured value in the calibration certificate of reference dipole.  
Note: All SAR values are normalized to 1W forward power.



## 6.4 SAR measurement procedure

The SAR test against the head phantom was carried out as follow:



Establish a call with the maximum output power with a base station simulator, the connection between the EUT and the base station simulator is established via air interface.

After an area scan has been done at a fixed distance of 2mm from the surface of the phantom on the source side, a 3D scan is set up around the location of the maximum spot SAR. First, a point within the scan area is visited by the probe and a SAR reading taken at the start of testing. At the end of testing, the probe is returned to the same point and a



second reading is taken. Comparison between these start and end readings enables the power drift during measurement to be assessed.

Above is the scanning procedure flow chart and table from the IEEE p1528 standard. This is the procedure for which all compliant testing should be carried out to ensure that all variations of the device position and transmission behavior are tested.

For body-worn measurement, the EUT was tested under two position: face upward and back upward.

## 6.5 Transmitting antenna information

The GSM&WCDMA&WIFI&BT&GPS antennas inside the EUT.

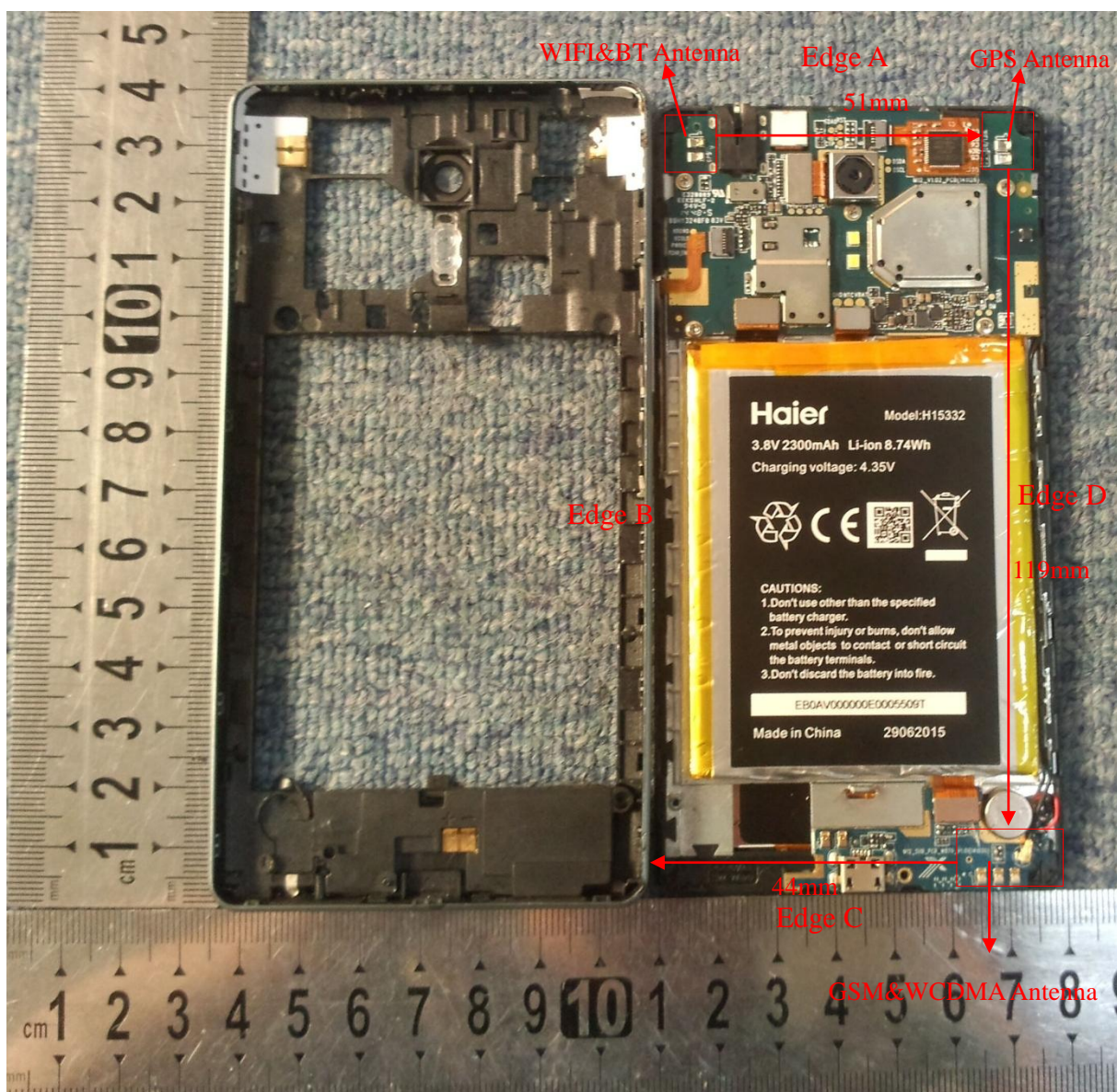


Fig. 3 Position of the antennas

The Body SAR measurement positions of each band are as below:

Antenna	Front	Back	Edge A	Edge B	Edge C	Edge D
2G /3G Antenna Body-worn	Yes	Yes	No	No	No	No
2G /3G Antenna hotspot	Yes	Yes	No	No	Yes	Yes
WIFI Antenna Body-worn	Yes	Yes	No	No	No	No
WIFI Antenna hotspot	Yes	Yes	Yes	Yes	No	No

Note: According to KDB941225 antenna-to-edge>2.5cm, SAR is not required.

## 7 CHARACTERISTICS OF THE TEST

### 7.1 Applicable Limit Regulations

**47CFR § 2.1093-** Radiofrequency Radiation Exposure Evaluation: Portable Devices;

**ANSI C95.1–1992:** Safety Levels with Respect to Human Exposure to Radio Frequency Electromagnetic Fields, 3 kHz – 300 GHz.( IEEE Std C95.1-1991)

**IEEE 1528–2013:** IEEE Recommended Practice for Determining the Peak Spatial-Average Specific Absorption Rate (SAR) in the Human Body Due to Wireless Communications Devices: Experimental Techniques;

It specifies the maximum exposure limit of **1.6 W/kg** as averaged over any 1 gram of tissue for portable devices being used within 20 cm of the user in the uncontrolled environment.

### 7.2 Applicable Measurement Standards

The Specific Absorption Rate (SAR) testing specification, method, and procedure for this is in accordance with the following standards:

FCC 47 CFR Part2 (2.1093)

ANSI/IEEE C95.1-1992

IEEE 1528-2013

FCC KDB 248227 D01 802.11 Wi-Fi SAR v02r01

FCC KDB 447498 D01 v05r02 General RF Exposure Guidance

FCC KDB 648474 D04 v01r02 Handset SAR

FCC KDB 865664 D01 v01r04 SAR Measurement 100MHz to 6GHz

FCC KDB 865664 D02 v01r01 SAR Exposure Reporting

FCC KDB 941225 D01 v03 3G SAR Procedures

FCC KDB 941225 D06 v02 Hotspot Mode

## 8 LABORATORY ENVIRONMENT

### The Ambient Conditions during SAR Test

Temperature	Min. = 22 ° C, Max. = 25 ° C
Atmospheric pressure	Min.=86 kPa, Max.=106 kPa
Relative humidity	Min. = 45%, Max. = 75%
Ground system resistance	< 0.5 Ω
Ambient noise is checked and found very low and in compliance with requirement of standards. Reflection of surrounding objects is minimized and in compliance with requirement of standards.	

## 9. Conducted RF Output Power

### 9.1 GSM Conducted Power

#### GSM Conducted Power

Band		Burst Average Power (dBm)			Frame-Average Power (dBm)		
GSM850	TX Channel	128	190	251	128	190	251
	Frequency(MHz)	824.2	836.4	848.8	824.2	836.4	848.8
	GSM	31.49	31.52	31.59	22.46	22.49	22.56
	GPRS (Slot 1)	31.40	31.43	31.45	22.37	22.4	22.42
	GPRS (Slot 2)	29.75	29.81	29.83	23.73	23.79	23.81
	GPRS (Slot 3)	27.61	27.58	27.65	23.35	23.32	23.39
	GPRS (Slot 4)	25.85	25.81	25.87	22.84	22.8	22.86
	EDGE (Slot 1)	31.18	31.25	31.14	22.15	22.22	22.11
	EDGE (Slot 2)	29.21	29.19	29.25	23.19	23.17	23.23
	EDGE (Slot 3)	27.31	27.35	27.28	23.05	23.09	23.02
	EDGE (Slot 4)	25.56	25.41	25.52	22.55	22.4	22.51
GSM1900	TX Channel	512	661	810	512	661	810
	Frequency(MHz)	1850.2	1880	1909.8	1850.2	1880	1909.8
	GSM	28.69	28.53	28.57	19.66	19.5	19.54
	GPRS (Slot 1)	28.42	28.35	28.40	19.39	19.32	19.37
	GPRS (Slot 2)	26.55	26.49	26.54	20.53	20.47	20.52
	GPRS (Slot 3)	25.12	25.07	25.15	20.86	20.81	20.89
	GPRS (Slot 4)	23.64	23.78	23.71	20.63	20.77	20.7
	EDGE (Slot 1)	28.15	28.22	28.29	19.12	19.19	19.26

	EDGE (Slot 2)	26.37	26.41	26.35	20.24	20.28	20.22
	EDGE (Slot 3)	24.49	24.55	24.52	20.07	20.13	20.10
	EDGE (Slot 4)	23.11	23.05	23.17	19.93	19.87	19.99

**Note:** Per KDB 447498 D01 v05r02, the maximum output power channel is used for SAR testing and for further SAR test reduction.

For Head SAR testing, GSM should be evaluated, therefore the EUT was set in GSM Voice for GSM850 and GSM1900 due to its highest frame-average power.

For Body worn SAR testing, GSM should be evaluated, therefore the EUT was set in GSM Voice for GSM850 and GSM 1900 due to its highest frame-average power.

For hotspot mode SAR testing, GPRS and EDGE should be evaluated, therefore the EUT was set in GPRS850 (2Tx slots) and GPRS1900 (3Tx slots) due to its highest frame-average power.

#### Timeslot consignations

No. Of Slots	Slot 1	Slot 2	Slot 3	Slot 4
Slot Consignation	1Up4Down	2Up3Down	3Up2Down	4Up1Down
Duty Cycle	1:8	1:4	1:2.67	1:2
Crest Factor	-9.03dB	-6.02dB	-4.26dB	-3.01dB

## 9.2 WCDMA Conducted peak output Power

#### WCDMA conducted peak output power

Item	band	WCDMA 850			WCDMA 1900		
	ARFCN	4132	4183	4233	9262	9400	9538
	subtest	dBm			dBm		
RMC 12.2kbps	non	22.24	22.36	22.21	22.06	22.19	22.13
HSDPA	1	22.15	22.11	22.04	22.18	22.21	22.16
	2	21.98	21.90	21.87	21.75	21.83	21.77
	3	21.81	22.87	22.93	21.84	21.75	21.82
	4	21.51	21.57	21.69	21.57	21.59	21.48
HSUPA	1	22.09	22.06	22.12	22.07	22.13	22.10
	2	21.71	21.67	21.74	21.78	21.81	21.74
	3	21.51	21.65	21.63	21.65	21.57	21.51
	4	21.46	21.55	21.50	21.52	21.48	21.51
	5	21.71	21.74	21.83	21.71	21.64	21.68
Note:	The Conducted RF Output Power test of WCDMA /HSDPA /HSUPA were tested by power meter.						



### HSUPA Setup Configuration:

- The EUT was connected to Base Station Agilent E5515C referred to the Setup Configuration.
- The RF path losses were compensated into the measurements.
- A call was established between EUT and Base Station with following setting \*:
  - Call Configs = 5.2B, 5.9B, 5.10B, and 5.13.2B with QPSK
  - Set the Gain Factors ( $\beta_c$  and  $\beta_d$ ) and parameters (AG Index) were set according to each specific sub-test in the following table, C11.1.3, quoted from the TS 34.121
  - Set Cell Power = -86 dBm
  - Set Channel Type = 12.2k + HSPA
  - Set UE Target Power
  - Power Ctrl Mode= Alternating bits
  - Set and observe the E-TFCI
  - Confirm that E-TFCI is equal to the target E-TFCI of 75 for sub-test 1, and other subtest's E-TFCI
- The transmitted maximum output power was recorded.

**Table C.11.1.3:  $\beta$  values for transmitter characteristics tests with HS-DPCCH and E-DCH**

Sub-test	$\beta_c$	$\beta_d$	$\beta_d$ (SF)	$\beta_c/\beta_d$	$\beta_{HS}$ (Note 1)	$\beta_{EC}$	$\beta_{ED}$ (Note 5) (Note 6)	$\beta_{ED}$ (SF)	$\beta_{ED}$ (Codes)	CM (dB) (Note 2)	MPR (dB) (Note 2)	AG Index (Note 6)	E-TFCI
1	11/15 (Note 3)	15/15 (Note 3)	64	11/15 (Note 3)	22/15	209/25	1309/225	4	1	1.0	0.0	20	75
2	6/15	15/15	64	6/15	12/15	12/15	94/75	4	1	3.0	2.0	12	67
3	15/15	9/15	64	15/9	30/15	30/15	$\beta_{ED1}$ : 47/15 $\beta_{ED2}$ : 47/15	4	2	2.0	1.0	15	92
4	2/15	15/15	64	2/15	4/15	2/15	56/75	4	1	3.0	2.0	17	71
5	15/15 (Note 4)	15/15 (Note 4)	64	15/15 (Note 4)	30/15	24/15	134/15	4	1	1.0	0.0	21	81

Note 1:  $\Delta_{ACK}$ ,  $\Delta_{NACK}$  and  $\Delta_{CQI} = 30/15$  with  $\beta_{HS} = 30/15 * \beta_c$ .

Note 2: CM = 1 for  $\beta_c/\beta_d=12/15$ ,  $\beta_{HS}/\beta_c=24/15$ . For all other combinations of DPDCH, DPCCH, HS-DPCCH, E-DPDCH and E-DPCCH the MPR is based on the relative CM difference.

Note 3: For subtest 1 the  $\beta_c/\beta_d$  ratio of 11/15 for the TFC during the measurement period (TF1, TF0) is achieved by setting the signalled gain factors for the reference TFC (TF1, TF1) to  $\beta_c = 10/15$  and  $\beta_d = 15/15$ .

Note 4: For subtest 5 the  $\beta_c/\beta_d$  ratio of 15/15 for the TFC during the measurement period (TF1, TF0) is achieved by setting the signalled gain factors for the reference TFC (TF1, TF1) to  $\beta_c = 14/15$  and  $\beta_d = 15/15$ .

Note 5: In case of testing by UE using E-DPDCH Physical Layer category 1, Sub-test 3 is omitted according to TS25.306 Table 5.1g.

Note 6:  $\beta_{ED}$  can not be set directly, it is set by Absolute Grant Value.

### Setup Configuration

### HSDPA Setup Configuration:

- The EUT was connected to Base Station Agilent E5515C referred to the Setup Configuration.
- The RF path losses were compensated into the measurements.
- A call was established between EUT and Base Station with following setting:
  - Set Gain Factors ( $\beta_c$  and  $\beta_d$ ) and parameters were set according to each
  - Specific sub-test in the following table, C10.1.4, quoted from the TS 34.121
  - Set RMC 12.2Kbps + HSDPA mode.
  - Set Cell Power = -86 dBm
  - Set HS-DSCH Configuration Type to FRC (H-set 1, QPSK)
  - Select HSDPA Uplink Parameters
  - Set Delta ACK, Delta NACK and Delta CQI = 8
  - Set Ack-Nack Repetition Factor to 3
  - Set CQI Feedback Cycle (k) to 4 ms
  - Set CQI Repetition Factor to 2
  - Power Ctrl Mode = All Up bits
- The transmitted maximum output power was recorded.

Table C.10.1.4:  $\beta$  values for transmitter characteristics tests with HS-DPCCH

Sub-test	$\beta_c$	$\beta_d$	$\beta_d$ (SF)	$\beta_c/\beta_d$	$\beta_{hs}$ (Note 1, Note 2)	CM (dB) (Note 3)	MPR (dB) (Note 3)
1	2/15	15/15	64	2/15	4/15	0.0	0.0
2	12/15 (Note 4)	15/15 (Note 4)	64	12/15 (Note 4)	24/15	1.0	0.0
3	15/15	8/15	64	15/8	30/15	1.5	0.5
4	15/15	4/15	64	15/4	30/15	1.5	0.5

Note 1:  $\Delta_{ACK}$ ,  $\Delta_{NACK}$  and  $\Delta_{CQI} = 30/15$  with  $\beta_{hs} = 30/15 \cdot \beta_c$ .

Note 2: For the HS-DPCCH power mask requirement test in clause 5.2C, 5.7A, and the Error Vector Magnitude (EVM) with HS-DPCCH test in clause 5.13.1A, and HSDPA EVM with phase discontinuity in clause 5.13.1AA,  $\Delta_{ACK}$  and  $\Delta_{NACK} = 30/15$  with  $\beta_{hs} = 30/15 \cdot \beta_c$ , and  $\Delta_{CQI} = 24/15$  with  $\beta_{hs} = 24/15 \cdot \beta_c$ .

Note 3: CM = 1 for  $\beta_c/\beta_d = 12/15$ ,  $\beta_{hs}/\beta_c = 24/15$ . For all other combinations of DPDCH, DPCCH and HS-DPCCH the MPR is based on the relative CM difference. This is applicable for only UEs that support HSDPA in release 6 and later releases.

Note 4: For subtest 2 the  $\beta_c/\beta_d$  ratio of 12/15 for the TFC during the measurement period (TF1, TF0) is achieved by setting the signalled gain factors for the reference TFC (TF1, TF1) to  $\beta_c = 11/15$  and  $\beta_d = 15/15$ .

### Note:

1. WCDMA SAR was tested under PMC 12.2kbps with HSPA Inactive per KDB Publication 941225 D01.HSPA SAR was not requires since the average output power of the HSPA subtests was not more than 0.25dB higher than the RMC level and SAR was less than 1.2W/kg.
2. It is expected by the manufacturer that MPR for some HSPA subtests may be up to 2dB more than specified by 3GPP, but also as low as 0dB according to the chipset implementation in this model.

## WLAN 2.4GHz Band Conducted Power

For the 802.11b/g SAR tests, a communication link is set up with the test mode software for WiFi mode test. The Absolute Radio Frequency Channel Number(ARFCN) is allocated to 1 ,6 and 11 respectively in the case of 2450 MHz.During the test,at the each test frequency channel, the EUT is operated at the RF continuous emission mode. Each channel should be tested at the lowest data rate.

802.11b/g operating modes are tested independently according to the service requirements in each frequency band. 802.11b/g modes are tested on channel 1, 6, 11; however,if output power reduction is necessary for channels 1 and/or 11 to meet restricted band requirements the highest output channel closest to each of these channels must be tested instead.

SAR is not required for 802.11g/n channels when the maximum average output power is less than 0.25dB higher than that measured on the corresponding 802.11b channels.

Wi-Fi 2450MHz	Channel/F req.(MHz)	Average Power (dBm) for Data Rates (Mbps)							
		1	2	5.5	11	/	/	/	/
802.11b	1(2412)	21.68	21.62	21.64	21.66	/	/	/	/
	6(2437)	21.34	21.31	21.26	21.29	/	/	/	/
	11(2462)	21.13	21.09	21.11	21.12	/	/	/	/

802.11g	Channel	6	9	12	18	24	36	48	54
	1(2412)	20.00	19.95	19.93	19.94	19.91	19.98	19.92	19.95
	6(2437)	20.07	20.01	20.06	20.05	19.95	19.97	20.03	20.04
	11(2462)	19.93	19.91	19.86	19.84	19.90	19.83	19.88	19.90
802.11n (HT20)	Channel	0	1	2	3	4	5	6	7
	1(2412)	19.97	19.92	19.93	19.96	19.91	19.86	19.85	19.90
	6(2437)	20.11	20.05	20.06	20.09	20.10	20.01	20.05	20.04
	11(2462)	20.03	19.94	19.93	19.98	19.93	20.01	19.97	19.93
802.11n (HT40)	Channel	0	1	2	3	4	5	6	7
	3(2422)	19.77	19.72	19.73	19.76	19.71	19.73	19.70	19.75
	6(2437)	19.89	19.85	19.83	19.84	19.87	19.83	19.86	19.81
	9(2452)	19.61	19.56	19.57	19.60	19.59	19.53	19.51	19.58

### Note:

1. Per KDB 248227 D01 v02r01, choose the highest output power channel to test SAR and determine further SAR exclusion
2. For each frequency band, testing at higher data rates and higher order modulations is not required when the maximum average output power for each of these configurations is less than 1/4dB higher than those measured at lowest data rate
3. Per KDB 248227 D01 v02r01, 802.11g /11n-HT20/11n-HT40 is not required. . When the highest reported SAR for DSSS is adjusted by the ratio of OFDM to DSSS specified maximum output power and the adjusted SAR is  $\leq 1.2\text{W/Kg}$ . Thus the SAR can be excluded.

### Bluetooth Conducted Power

Channel	Frequency (MHz)	BT3.0 Output Power(dBm)		
		GFSK	$\pi$ /4-DQPSK	8-DPSK
CH 0	2402	7.58	6.49	6.61
CH 39	2441	7.55	6.70	6.80
CH 78	2480	7.22	6.45	6.57
Channel	Frequency (MHz)	BT4.0 Output Power(dBm)		
		GFSK		
CH 0	2402	0.37		
CH 39	2441	0.77		
CH 78	2480	0.70		

**Note:**

1. Per KDB 447498 D01v05r02, the 1-g and 10-g SAR test exclusion thresholds for 100MHz to 6GHz at test separation distances  $\leq 50\text{mm}$  are determined by:  $[(\text{max. power of channel, including tune-up tolerance, mW})/(\text{min. test separation distance, mm})] \cdot [\sqrt{f} \text{ (GHz)}] \leq 3.0$  for 1-g SAR and  $\leq 7.5$  for 10-g extremity SAR
  - (1)  $f(\text{GHz})$  is the RF channel transmit frequency in GHz
  - (2) Power and distance are round to the nearest mW and mm before calculation
  - (3) The result is rounded to one decimal place for comparison
  - (4) If the test separation distance(antenna-user) is  $< 5\text{mm}$ , 5mm is used for excluded SAR calculation

Bluetooth Max Power (dBm)	mW	Test Distance (mm)	Frequency(GHz)	Exclusion Thresholds
8.6	7.244	5	2.4	2.245

Per KDB 447498 D01v05r02 exclusion thresholds is  $1.233 < 3$ , RF exposure evaluation is not required.  
 BT estimated SAR value=Exclusion Thresholds/7.5= $2.245/7.5=0.299\text{W/Kg}$

Bluetooth Max Power (dBm)	mW	Test Distance (mm)	Frequency(GHz)	Exclusion Thresholds
8.6	7.244	10	2.4	1.122

Per KDB 447498 D01v05r02 exclusion thresholds is  $1.122 < 3$ , RF exposure evaluation is not required.  
 BT estimated SAR value=Exclusion Thresholds/7.5= $1.122/7.5=0.150\text{W/Kg}$

The estimated SAR value is used for simultaneous transmission analysis.



## General Note:

1. Per KDB 447498 D01v05r02, the reported SAR is the measured SAR value adjusted for maximum tune-up tolerance.
2. Per KDB447498 D01v05r02, testing of other required channels within the operating mode of a frequency band is not required when the reported 1-g or 10-g SAR for the mid-band or highest output power channel is:  $\leq 0.8$  W/kg or 2.0 W/kg, for 1-g or 10-g respectively, when the transmission band is  $\leq 100$  MHz. When the maximum output power variation across the required test channels is  $> \frac{1}{2}$  dB, instead of the middle channel, the highest output power channel must be used.
3. Per KDB941225 D06v02, the DUT Dimension is bigger than 9 cm x 5 cm, so 10mm is chosen as the test separation distance for Hotspot mode. When the antenna-to-edge distance is greater than 2.5cm, such position does not need to be tested. As the manufacture required, the separation distance use 5mm for Hotspot mode.
4. Per KDB 865664 D01v01r04, for each frequency band, repeated SAR measurement is required only when the measured SAR is  $\geq 0.8$  W/Kg; if the deviation among the repeated measurement is  $\leq 20\%$ , and the measured SAR  $< 1.45$  W/Kg, only one repeated measurement is required.
5. Per KDB865664 D02v01r01, SAR plot is only required for the highest measured SAR in each exposure configuration, wireless mode and frequency band combination; Plots are also required when the measured SAR is  $> 1.5$  W/kg, or  $> 7.0$  W/kg for occupational exposure. The published RF exposure KDB procedures may require additional plots; for example, to support SAR to peak location separation ratio test exclusion and/or volume scan post-processing(Refer to appendix D for details).
6. Per KDB941225 D01v03, when multiple slots can be used, the GPRS/EDGE slot configuration with the highest frame-averaged output power was selected for SAR testing.
7. Per KDB941225 D01v03, when the maximum output power and tune-up tolerance specified for production units in a secondary mode is  $\leq \frac{1}{4}$  dB higher than the primary mode or when the highest reported SAR of the primary mode is scaled by the ratio of specified maximum output power and tune-up tolerance of secondary to primary mode and the adjusted SAR is  $\leq 1.2$  W/kg, SAR measurement is not required for the secondary mode.
8. Per KDB 248227 D01 v02r01, 802.11g /11n-HT20/11n-HT40 is not required. When the highest reported SAR for DSSS is adjusted by the ratio of OFDM to DSSS specified maximum output power and the adjusted SAR is  $\leq 1.2$  W/Kg. Thus the SAR can be excluded.

### 9.3. Scaling Factor calculation

Operation Mode	Channel	Output Power(dBm)	Tune up Power in tolerance(dBm)	Scaling Factor
GSM 850	128	31.49	31.8 $\pm$ 0.5	1.205
	190	31.52	31.8 $\pm$ 0.5	1.197
	251	31.59	31.8 $\pm$ 0.5	1.178
GPRS 850(2Tx)	128	29.75	29.5 $\pm$ 0.5	1.059
	190	29.81	29.5 $\pm$ 0.5	1.045
	251	29.83	29.5 $\pm$ 0.5	1.040
GSM1900	512	28.69	29.0 $\pm$ 0.5	1.205
	661	28.53	29.0 $\pm$ 0.5	1.250
	810	28.57	28.8 $\pm$ 0.5	1.239
GPRS1900(3Tx)	512	25.12	25.0 $\pm$ 0.5	1.091
	661	25.07	25.0 $\pm$ 0.5	1.104
	810	25.15	25.0 $\pm$ 0.5	1.084
WCDMA850	4132	22.24	22.5 $\pm$ 0.5	1.191
	4183	22.36	22.5 $\pm$ 0.5	1.159
	4233	22.21	22.5 $\pm$ 0.5	1.199
WCDMA1900	9262	22.06	22.2 $\pm$ 0.5	1.159
	9400	22.19	22.2 $\pm$ 0.5	1.125
	9538	22.13	22.2 $\pm$ 0.5	1.140
WIFI 802.11b	1	21.68	21.0 $\pm$ 1.0	1.076
	6	21.34	21.0 $\pm$ 1.0	1.164
	11	21.13	21.0 $\pm$ 1.0	1.222
BT	39	7.58	7.6 $\pm$ 1.0	1.265



## Simultaneous SAR

No.	Transmitter Combinations	Scenario Supported or not	Supported for Mobile Hotspot or not
1	GSM(Voice)+GSM(Data)	No	No
2	WCDMA(Voice)+WCDMA(Data)	Yes	No
3	GSM(Voice)+ WCDMA(Data)	No	No
4	WCDMA(Voice)+GSM(Data)	No	No
5	GSM(Voice)+ WCDMA(Voice)	No	No
6	GSM(Voice)+Wifi	Yes	No
7	WCDMA(Voice) +Wifi	Yes	No
8	GSM(Voice)+ BT	Yes	No
9	WCDMA(Voice) + BT	Yes	No
10	GSM(Data)+wifi	Yes	Yes
11	WCDMA(Data) +wifi	Yes	Yes

## 10 TEST RESULTS

### 10.1 Summary of SAR Measurement Results

Table 7: SAR Values of GSM 850MHz Band

Temperature: 23.0~23.5°C, humidity: 62~64%.					
Test Positions		Channel /Frequency (MHz)	SAR(W/Kg), 1.6 (1g average)		Plot No.
			SAR(W/Kg),1g	Scaled SAR(W/Kg),1g	
Right Side of Head	Cheek	251/848.8	0.021	0.025	--
	Tilt 15 degrees	251/848.8	0.015	0.018	--
Left Side of Head	Cheek	251/848.8	<b>0.023</b>	<b>0.027</b>	<b>1</b>
	Tilt 15 degrees	251/848.8	0.016	0.019	--
Body-worn (10mm Separation)	GSM	Face Upward	0.037	0.044	--
		Back Upward	<b>0.058</b>	<b>0.068</b>	<b>2</b>
Hotspot (10mm Separation)	GPRS (2Tx)	Face Upward	0.033	0.034	--
		Back Upward	<b>0.058</b>	<b>0.060</b>	<b>3</b>
		Edge C	0.019	0.020	--
		Edge D	0.034	0.035	--

Table 8: SAR Values of GSM1900 MHz Band

Temperature: 23.0~23.5°C, humidity: 62~64%.					
Test Positions		Channel /Frequency (MHz)	SAR(W/Kg), 1.6 (1g average)		Plot No.
			SAR(W/Kg),1g	Scaled SAR(W/Kg),1g	
Right Side of Head	Cheek	512/1850.20	0.045	0.054	--
	Tilt 15 degrees	512/1850.20	0.015	0.018	--
Left Side of Head	Cheek	512/1850.20	<b>0.057</b>	<b>0.069</b>	<b>4</b>
	Tilt 15 degrees	512/1850.20	0.014	0.017	--
Body-worn (10mm Separation)	GSM	Face Upward	0.078	0.094	--
		Back Upward	<b>0.114</b>	<b>0.137</b>	<b>5</b>
Hotspot (10mm Separation)	GPRS (3Tx)	Face Upward	0.069	0.075	--
		Back Upward	0.112	0.121	--
		Edge C	<b>0.123</b>	<b>0.133</b>	<b>6</b>
		Edge D	0.069	0.075	--

Table 9: SAR Values of WCDMA850

Temperature: 23.0~23.5°C, humidity: 62~64%.					
Test Positions		Channel /Frequency (MHz)	SAR(W/Kg), 1.6 (1g average)		Plot No.
			SAR(W/Kg),1g	Scaled SAR(W/Kg),1g	
Right Side of Head	Cheek	4183/836.6	0.031	0.036	--
	Tilt 15 degrees	4183/836.6	0.025	0.029	--
Left Side of Head	Cheek	4183/836.6	<b>0.034</b>	<b>0.039</b>	<b>7</b>
	Tilt 15 degrees	4183/836.6	0.020	0.023	--

Body-worn (10mm Separation)	Face Upward	4183/836.6	0.052	0.060	--
	Back Upward	4183/836.6	<b>0.101</b>	<b>0.117</b>	<b>8</b>
Hotspot (10mm Separation)	Face Upward	4183/836.6	0.052	0.060	--
	Back Upward	4183/836.6	<b>0.101</b>	<b>0.117</b>	--
	Edge C	4183/836.6	0.024	0.028	--
	Edge D	4183/836.6	0.060	0.070	--

Table 10: SAR Values of WCDMA1900

Temperature: 23.0~23.5°C, humidity: 62~64%.

Test Positions		Channel /Frequency (MHz)	SAR(W/Kg), 1.6 (1g average)		Plot No.
			SAR(W/Kg 1g Peak)	Scaled SAR(W/Kg),1g	
Right Side of Head	Cheek	9400/1880.0	<b>0.137</b>	<b>0.154</b>	<b>9</b>
	Tilt 15 degrees	9400/1880.0	0.051	0.057	--
Left Side of Head	Cheek	9400/1880.0	0.097	0.109	--
	Tilt 15 degrees	9400/1880.0	0.038	0.043	--
Body-worn (10mm Separation)	Face Upward	9400/1880.0	0.226	0.254	--
	Back Upward	9400/1880.0	<b>0.394</b>	<b>0.443</b>	<b>10</b>
Hotspot (10mm Separation)	Face Upward	9400/1880.0	0.226	0.254	--
	Back Upward	9400/1880.0	0.394	0.443	--
	Edge C	9400/1880.0	0.286	0.322	--
	Edge D	9400/1880.0	0.190	0.214	--

Table 11: SAR Values of Wi-Fi 802.11b

Test Positions		Channel /Frequency (MHz)	SAR(W/Kg), 1.6 (1g average)		Plot No.
			SAR(W/Kg1g Peak)	Scaled SAR(W/Kg),1g	
Right Side of Head	Cheek	1/2412	<b>0.496</b>	<b>0.528</b>	<b>11</b>
	Tilt 15 degrees	1/2412	0.383	0.408	--
Left Side of Head	Cheek	1/2412	0.397	0.422	--
	Tilt 15 degrees	1/2412	0.308	0.328	--
Body-worn (10mm Separation)	Face Upward	1/2412	0.225	0.239	--
	Back Upward	1/2412	<b>0.456</b>	<b>0.485</b>	<b>12</b>
Hotspot (10mm Separation)	Face Upward	1/2412	0.225	0.239	--
	Back Upward	1/2412	<b>0.456</b>	0.485	--
	Edge A	1/2412	0.154	0.164	--
	Edge B	1/2412	0.112	0.119	--

Note: When the 1-g SAR for the mid-band channel or the channel with the Highest output power satisfy the following conditions, testing of the other channels in the band is not required.(Per KDB 447498 D01 General RF Exposure Guidance v05r02)

- $\leq 0.8$  W/kg, when the transmission band is  $\leq 100$  MHz
- $\leq 0.6$  W/kg, when the transmission band is between 100 MHz and 200 MHz
- $\leq 0.4$  W/kg, when the transmission band is  $\geq 200$  MHz

## 10.2 Conclusion

Localized Specific Absorption Rate (SAR) of this portable wireless device has been measured in all cases requested by the relevant standards cited in Clause 6 of this report. Maximum localized SAR is **below** exposure limits specified in the relevant standards.

## SIMULTANEOUS TRANSMISSION ANALYSIS

Test Position		Right Cheek	Right Title	Left Cheek	Left Tilt
Head MAX 1-g SAR(W/Kg)	GSM850	0.025	0.018	0.027	0.019
	GSM1900	0.054	0.018	0.069	0.017
	WCDMA850	0.036	0.029	0.039	0.023
	WCDMA1900	0.154	0.057	0.109	0.043
	WIFI 802.11b	0.528	0.408	0.422	0.328
	BT	*0.299	*0.299	*0.299	*0.299
BT Simultaneous $\Sigma$ 1-g SAR(W/Kg)		<b>0.926</b>	0.783	0.801	0.689
WiFi Simultaneous $\Sigma$ 1-g SAR(W/Kg)		<b>0.682</b>	0.465	0.531	0.371

Simultaneous Tx Combination of GSM/WCDMA/LTE and BT/WIFI (Head).

Test Position		Face	Back	Edge A	Edge B	Edge C	Edge D
Body-worn 10mm separation MAX 1-g SAR(W/Kg)	GSMS850	0.044	0.068	--	--	--	--
	GSM1900	0.094	0.137	--	--	--	--
	WCDMA850	0.060	0.117	--	--	--	--
	WCDMA1900	0.254	0.443	--	--	--	--
	WIFI 802.11b	0.239	0.485	--	--	--	--
	BT	*0.150	*0.150	--	--	--	--
BT Simultaneous $\Sigma$ 1-g SAR(W/Kg)		0.435	<b>0.727</b>	--	--	--	--
WiFi Simultaneous $\Sigma$ 1-g SAR(W/Kg)		0.493	<b>0.928</b>	--	--	--	--

Simultaneous Tx Combination of GSM/WCDMA/LTE and BT/WIFI (Body).

Test Position		Face	Back	Edge A	Edge B	Edge C	Edge D
Hotspot 10mm separation MAX 1-g SAR(W/Kg)	GPRS850	0.034	0.060	--	--	0.020	0.035
	GPRS1900	0.075	0.121	--	--	0.133	0.075
	WCDMA 850	0.060	0.117	--	--	0.028	0.070
	WCDMA 1900	0.254	0.443	--	--	0.322	0.214
	WIFI 802.11b	0.239	0.485	0.164	0.119	--	--
	BT	*0.150	*0.150	*0.150	*0.150	--	--
BT Simultaneous $\Sigma$ 1-g SAR(W/Kg)		0.435	<b>0.727</b>	0.345	0.150	0.322	0.214
WiFi Simultaneous $\Sigma$ 1-g SAR(W/Kg)		0.493	<b>0.928</b>	0.164	0.119	0.322	0.214

Simultaneous Tx Combination of GSM/WCDMA/LTE and WIFI (Body).

The estimated SAR value with \* Signal

### **SAR to Peak Location Separation Ratio (SPLSR)**

As the Sum of the SAR is not greater than 1.6 W/kg SPLSR assessment is not required

## 11 Measurement Uncertainty

No.	Uncertainty Component	Type	Uncertainty Value (%)	Probability Distribution	k	ci	Standard Uncertainty (%) $u_i(\%)$	Degree of freedom $\nu_{eff}$ or $\nu_i$
<b>Measurement System</b>								
1	—Probe Calibration	B	5.8	N	1	1	5.8	$\infty$
2	—Axial isotropy	B	3.5	R	$\sqrt{3}$	0.5	1.43	$\infty$
3	—Hemispherical Isotropy	B	5.9	R	$\sqrt{3}$	0.5	2.41	$\infty$
4	—Boundary Effect	B	1	R	$\sqrt{3}$	1	0.58	$\infty$
5	—Linearity	B	4.7	R	$\sqrt{3}$	1	2.71	$\infty$
6	—System Detection Limits	B	1.0	R	$\sqrt{3}$	1	0.58	$\infty$
7	Modulation response	B	3	N	1	1	3.00	
8	—Readout Electronics	B	0.5	N	1	1	0.50	$\infty$
9	—Response Time	B	1.4	R	$\sqrt{3}$	1	0.81	$\infty$
10	—Integration Time	B	3.0	R	$\sqrt{3}$	1	1.73	$\infty$
11	—RF Ambient Conditions	B	3.0	R	$\sqrt{3}$	1	1.73	$\infty$
12	—Probe Position Mechanical tolerance	B	1.4	R	$\sqrt{3}$	1	0.81	$\infty$
13	—Probe Position with respect to Phantom Shell	B	1.4	R	$\sqrt{3}$	1	0.81	$\infty$
14	—Extrapolation, Interpolation and Integration Algorithms for Max. SAR evaluation	B	2.3	R	$\sqrt{3}$	1	1.33	$\infty$
<b>Uncertainties of the DUT</b>								
15	—Position of the DUT	A	2.6	N	$\sqrt{3}$	1	2.6	5
16	—Holder of the DUT	A	3	N	$\sqrt{3}$	1	3.0	5

17	–Output Power Variation –SAR drift measurement	B	5.0	R	$\sqrt{3}$	1	2.89	$\infty$
<b>Phantom and Tissue Parameters</b>								
18	– Phantom Uncertainty(shape and thickness tolerances)	B	4	R	$\sqrt{3}$	1	2.31	$\infty$
19	Uncertainty in SAR correction for deviation(in permittivity and conductivity)	B	2	N	1	1	2.00	
20	–Liquid Conductivity Target –tolerance	B	2.5	R	$\sqrt{3}$	0.6	1.95	$\infty$
21	–Liquid Conductivity –measurement Uncertainty)	B	4	N	$\sqrt{3}$	1	0.92	9
22	–Liquid Permittivity Target tolerance	B	2.5	R	$\sqrt{3}$	0.6	1.95	$\infty$
23	–Liquid Permittivity –measurement uncertainty	B	5	N	$\sqrt{3}$	1	1.15	$\infty$
<b>Combined Standard Uncertainty</b>				RSS			10.63	
<b>Expanded uncertainty</b> (Confidence interval of 95 %)				K=2			21.26	

### System Check Uncertainty

No.	Uncertainty Component	Type	Uncertainty Value (%)	Probability Distribution	k	ci	Standard Uncertainty (%) $u_i(\%)$	Degree of freedom $V_{eff}$ or $v_i$
<b>Measurement System</b>								
1	–Probe Calibration	B	5.8	N	1	1	5.8	$\infty$
2	–Axial isotropy	B	3.5	R	$\sqrt{3}$	0.5	1.43	$\infty$
3	–Hemispherical Isotropy	B	5.9	R	$\sqrt{3}$	0.5	2.41	$\infty$
4	–Boundary Effect	B	1	R	$\sqrt{3}$	1	0.58	$\infty$
5	–Linearity	B	4.7	R	$\sqrt{3}$	1	2.71	$\infty$
6	–System Detection Limits	B	1	R	$\sqrt{3}$	1	0.58	$\infty$
7	Modulation response	B	0	N	1	1	0.00	



8	— Readout Electronics	B	0.5	N	1	1	0.50	$\infty$
9	— Response Time	B	0.00	R	$\sqrt{3}$	1	0.00	$\infty$
10	— Integration Time	B	1.4	R	$\sqrt{3}$	1	0.81	$\infty$
11	— RF Ambient Conditions	B	3.0	R	$\sqrt{3}$	1	1.73	$\infty$
12	— Probe Position Mechanical tolerance	B	1.4	R	$\sqrt{3}$	1	0.81	$\infty$
13	— Probe Position with respect to Phantom Shell	B	1.4	R	$\sqrt{3}$	1	0.81	$\infty$
14	— Extrapolation, Interpolation and Integration Algorithms for Max. SAR evaluation	B	2.3	R	$\sqrt{3}$	1	1.33	$\infty$
Uncertainties of the DUT								
15	Deviation of experimental source from numerical source	A	4	N	1	1	4.00	5
16	Input Power and SAR drift measurement	A	5	R	$\sqrt{3}$	1	2.89	5
17	Dipole Axis to Liquid Distance	B	2	R	$\sqrt{3}$	1	1.2	$\infty$
Phantom and Tissue Parameters								
18	— Phantom Uncertainty(shape and thickness tolerances)	B	4	R	$\sqrt{3}$	1	2.31	$\infty$
19	Uncertainty in SAR correction for deviation(in permittivity and conductivity)	B	2	N	1	1	2.00	
20	— Liquid Conductivity Target –tolerance	B	2.5	R	$\sqrt{3}$	0.6	1.95	$\infty$
21	— Liquid Conductivity –measurement Uncertainty)	B	4	N	$\sqrt{3}$	1	0.92	9
22	— Liquid Permittivity Target tolerance	B	2.5	R	$\sqrt{3}$	0.6	1.95	$\infty$
23	— Liquid Permittivity –measurement uncertainty	B	5	N	$\sqrt{3}$	1	1.15	$\infty$
Combined Standard Uncertainty				RSS			10.15	
Expanded uncertainty (Confidence interval of 95 %)				K=2			20.29	

**12 MAIN TEST INSTRUMENTS**

<b>EQUIPMENT</b>	<b>TYPE</b>	<b>Series No.</b>	<b>Calibration Date</b>	<b>calibration period</b>
System Simulator	E5515C	GB 47200710	2015/06/10	1 Year
System Simulator	CMW500	130805	2015/08/10	1 Year
SAR Probe	SATIMO	SN_0413_EP166	2015/08/10	1 Year
Dipole	SID835	SN09/13 DIP0G835-217	2014/08/28	2 Year
Dipole	SID1900	SN09/13 DIP1G900-218	2014/08/28	2 Year
Dipole	SID2450	SN09/13 DIP2G450-220	2014/08/28	2 Year
Vector Network Analyzer	ZVB8	A0802530	2015/06/08	1 Year
Signal Generator	SMR27	A0304219	2015/06/08	1 Year
Power Meter	NRP2	A140401673	2015/03/27	1 Year
Power Sensor	NPR-Z11	1138.3004.02-114072-nq	2015/03/27	1 Year
Amplifier	Nucletudes	143060	2015/03/27	1 Year
Directional Coupler	DC6180A	305827	2015/03/27	1 Year
Power Meter	NRVS	A0802531	2015/03/27	1 Year
Power Sensor	NRV-Z4	100069	2015/03/27	1 Year
Multimeter	Keithley-2000	4014020	2015/03/27	1 Year

**ANNEX A**

**of**

**CCIC-SET**

**CONFORMANCE TEST REPORT FOR**

**HUMAN EXPOSURE TO ELECTROMAGNETIC FIELDS**

**SET2015-14618**

**Mobile phone**

**Type Name: G10+/W717+**

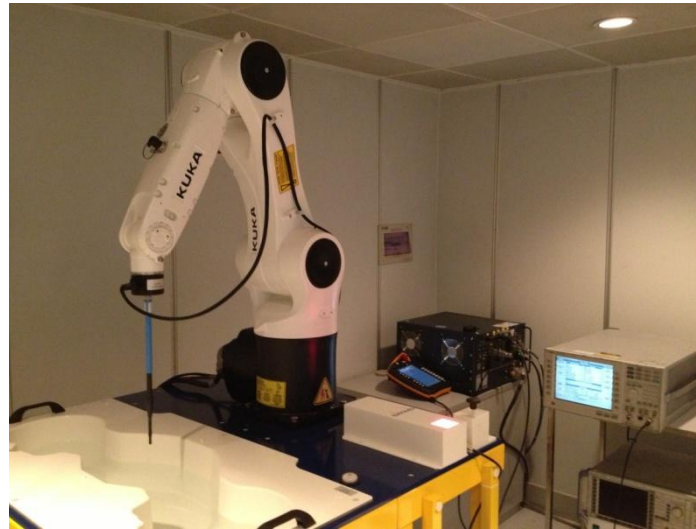
**Hardware Version: M08\_V1.02\_PCB\_(140911)**

**Software Version: S001**

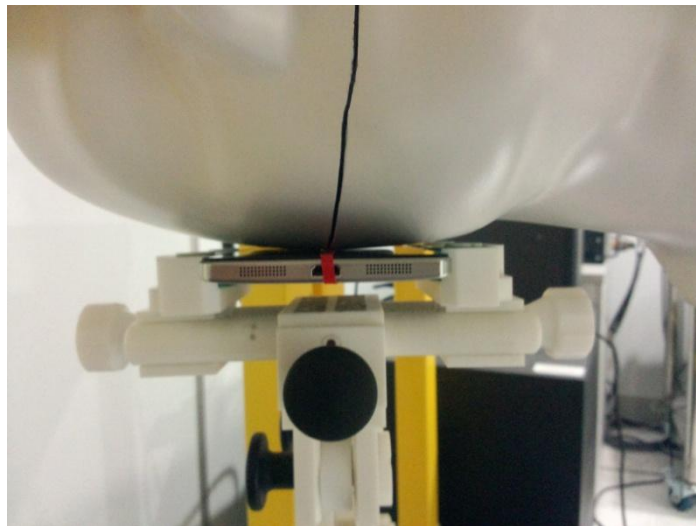
**TEST SETUP**

**This Annex consists of 7 pages**

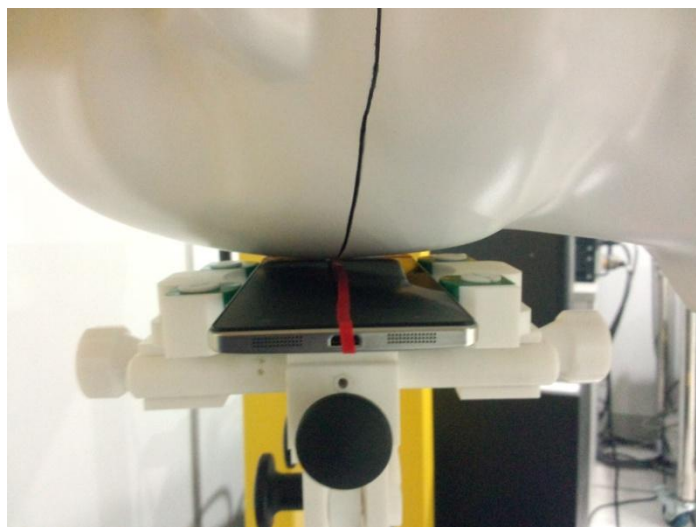
**Date of Report: 2015-10-21**



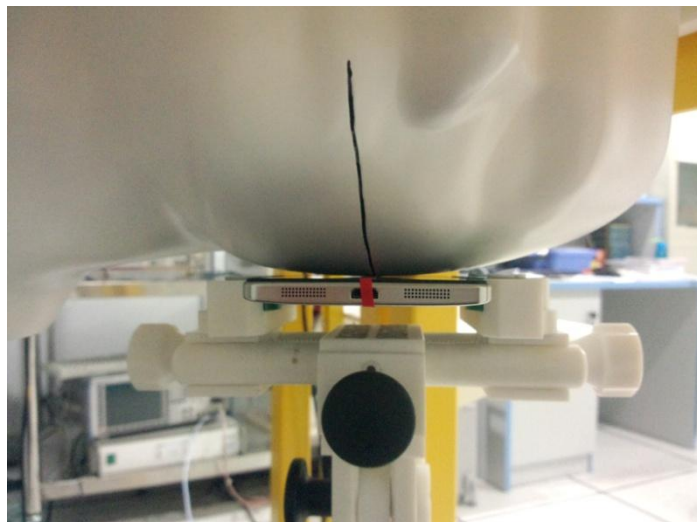
**Fig.1 COMO SAR Test System**



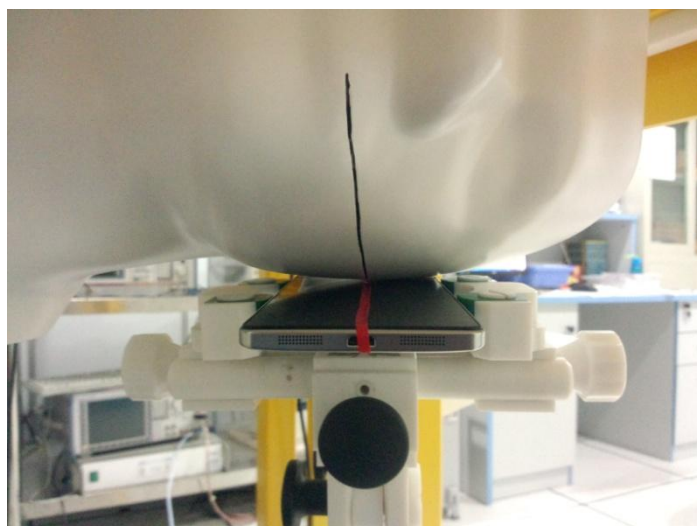
**Fig.2 Right\_Cheek**



**Fig.3 Right\_Tilt**



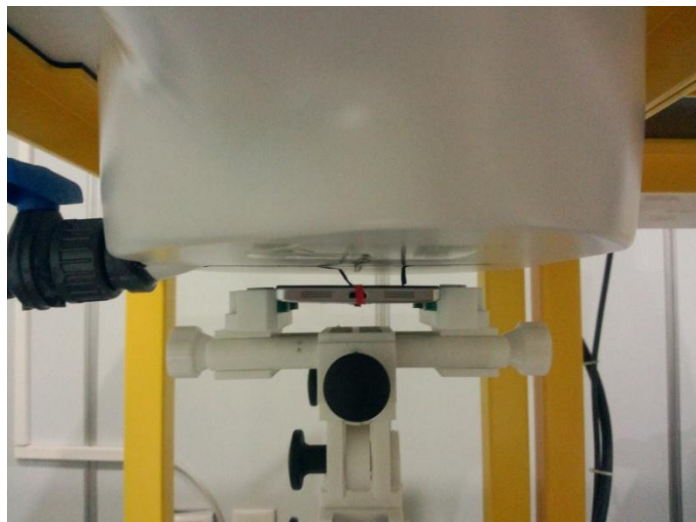
**Fig.4 Left Cheek**



**Fig.5 Left\_Tilt**



**Fig.6 Body (Back upside,10mm separation)**



**Fig.7 Body (Face upside,10mm separation)**

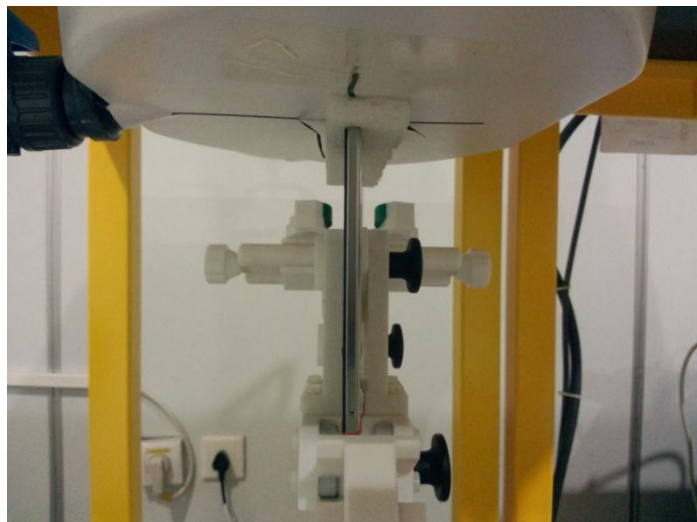


**Fig.8 Body Edge A(UP,10mm separation)**



**Fig.9 Body Edge B(UP,10mm separation)**





**Fig.10 Body Edge C(UP,10mm separation)**



**Fig.11 Body Edge D(Right upside,10mm separation)**



**Fig.12 Head Liquid of 850MHz(15cm)**



**Fig.13 Body Liquid of 850MHz (15cm)**



**Fig.14 Head Liquid of 1900MHz(15cm)**



**Fig.15 Body Liquid of 1900MHz(15cm)**





**Fig.16 Head Liquid of 2450 (15cm)**



**Fig.17 Body Liquid of 2450 (15cm)**

**ANNEX B**

**of**

**CCIC-SET**

**CONFORMANCE TEST REPORT FOR**

**HUMAN EXPOSURE TO ELECTROMAGNETIC FIELDS**

**SET2015-14618**

**Mobile phone**

**Type Name: G10+/W717+**

**Hardware Version: M08\_V1.02\_PCB\_(140911)**

**Software Version: S001**

**Sample Photographs**

**This Annex consists of 2 pages**

**Date of Report: 2015-10-21**

## 1. Appearance



Appearance and size (obverse)



Appearance and size (reverse)

**ANNEX C**

**of**

**CCIC-SET**

**CONFORMANCE TEST REPORT FOR**

**HUMAN EXPOSURE TO ELECTROMAGNETIC FIELDS**

**SET2015-14618**

**Mobile phone**

**Type Name: G10+/W717+**

**Hardware Version: M08\_V1.02\_PCB\_(140911)**

**Software Version: S001**

**System Performance Check Data and Highest SAR Plots**

**This Annex consists of 53 pages**

**Date of Report: 2015-10-21**

## System Performance Check (Head, 835MHz)

Type: Validation measurement

Area scan resolution: dx=8mm,dy=8mm

Zoom scan resolution: dx=8mm, dy=8mm, dz=5mm

Date of measurement:9/10/2015

Measurement duration: 21 minutes 35seconds

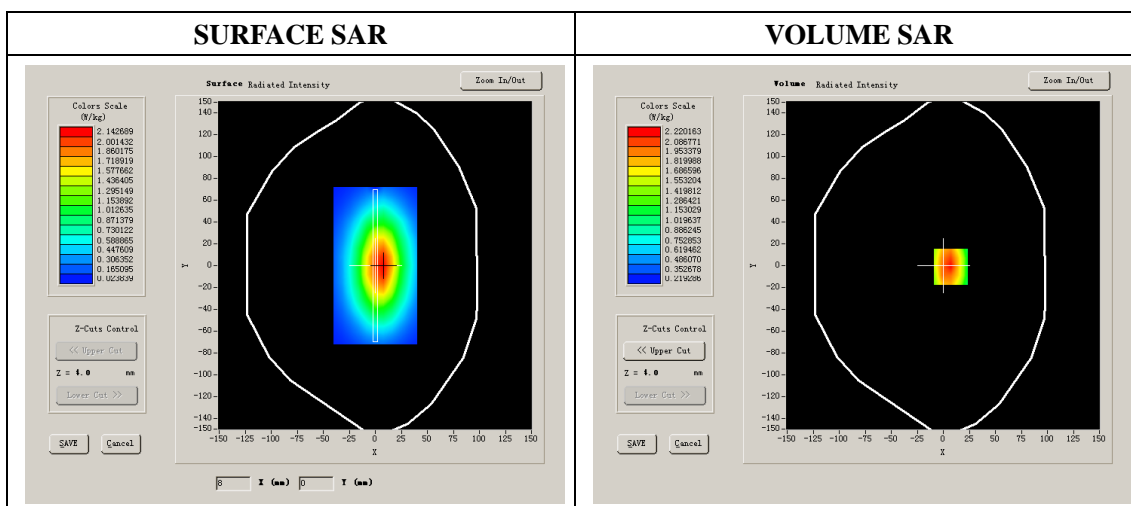
### A. Experimental conditions.

Phantom File	dx=8mm dy=8mm
Phantom	5x5x7,dx=8mm dy=8mm dz=5mm
Device Position	
Band	835MHz
Channels	
Signal	CW

### B. SAR Measurement Results

#### Band SAR

E-Field Probe	SATIMO SN_04/13_EP166
Frequency (MHz)	835
Relative permittivity (real part)	41.32
Relative permittivity	18.97
Conductivity (S/m)	0.88
Power drift (%)	0.68
Ambient Temperature:	23.2 °C
Liquid Temperature:	23.5 °C
ConvF:	5.69
Duty factor:	1:1



Maximum location: X=7.00, Y=-1.00

SAR 10g (W/Kg)	1.820542
SAR 1g (W/Kg)	2.413845

## System Performance Check (Head, 1900MHz)

Type: Validation measurement

Area scan resolution: dx=8mm,dy=8mm

Zoom scan resolution: dx=8mm, dy=8mm, dz=5mm

Date of measurement: 09/10/2015

Measurement duration: 22 minutes 21 seconds

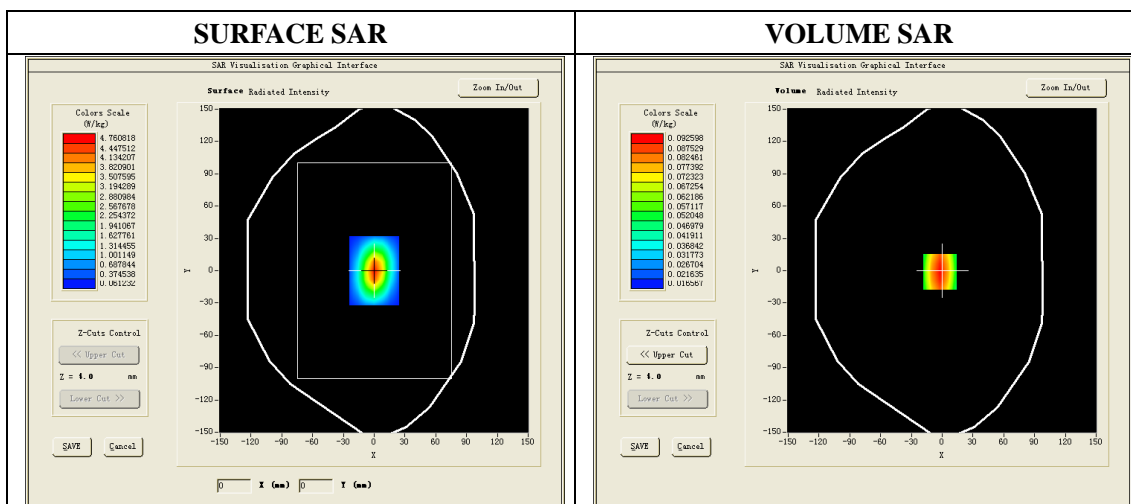
### A. Experimental conditions.

Phantom File	dx=8mm dy=8mm
Phantom	5x5x7,dx=8mm dy=8mm dz=5mm
Device Position	
Band	1900MHz
Channels	
Signal	CW

### B. SAR Measurement Results

#### Band SAR

E-Field Probe	SATIMO SN_04/13_EP166
Frequency (MHz)	1900.000000
Relative permittivity (real part)	39.84
Relative permittivity	13.17
Conductivity (S/m)	1.39
Power drift (%)	-0.51
Ambient Temperature:	22.2 °C
Liquid Temperature:	22.5 °C
ConvF:	5.25
Duty factor:	1:1



Maximum location: X=6.00, Y=0.00

SAR 10g (W/Kg)	5.153458
SAR 1g (W/Kg)	9.867282

## System Performance Check (Head, 2450MHz)

Type: Phone measurement

Area scan resolution: dx=8mm,dy=8mm

Zoom scan resolution: dx=5mm dy=5mm dz=4mm

Date of measurement:11/10/2015

Measurement duration: 21 minutes32 seconds

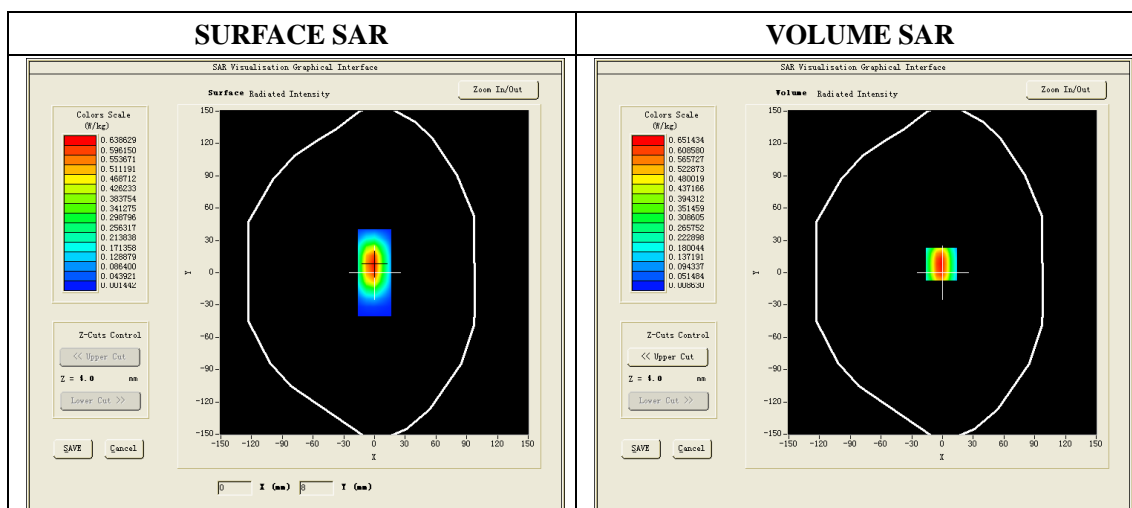
### A. Experimental conditions.

Phantom File	dx=8mm dy=8mm
Phantom	7x7x8,dx=5mm dy=5mm dz=4mm
Device Position	Dipole
Band	2450MHz
Channels	
Signal	CW

### B. SAR Measurement Results

#### Band SAR

E-Field Probe	SATIMO SN_04/13_EP166
Frequency (MHz)	2450
Relative permittivity (real part)	38.96
Relative permittivity	13.22
Conductivity (S/m)	1.80
Power Drift (%)	-1.52
ConvF:	4.93
Duty factor:	1:1



Maximum location: X=0.00, Y=8.00

SAR 10g (W/Kg)	5.916247
SAR 1g (W/Kg)	13.183472



## System Performance Check (Body, 835MHz)

Type: Validation measurement

Area scan resolution: dx=8mm,dy=8mm

Zoom scan resolution: dx=8mm, dy=8mm, dz=5mm

Date of measurement: 08/10/2015

Measurement duration: 20 minutes21 seconds

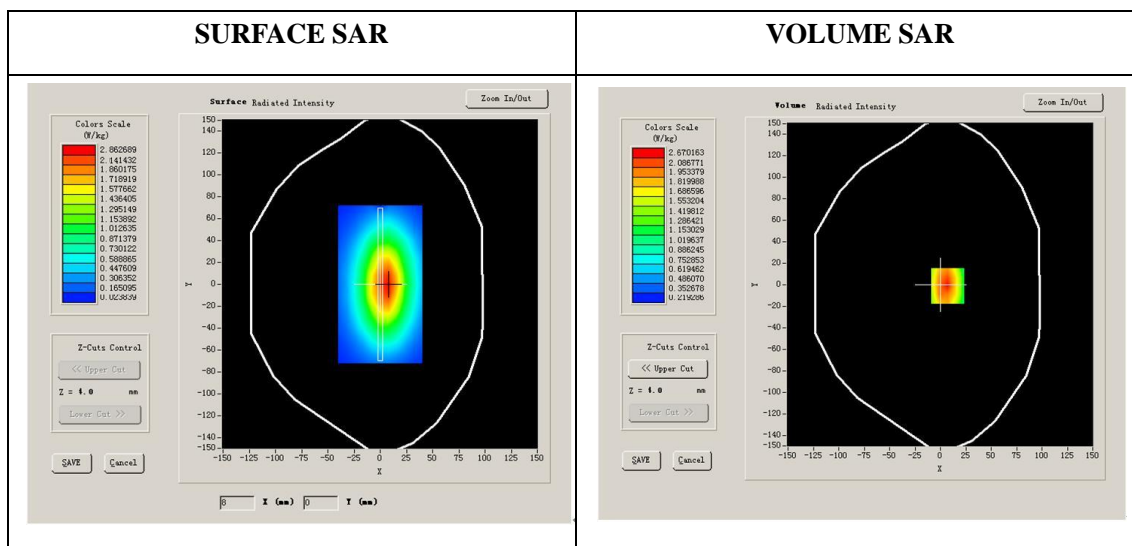
### A. Experimental conditions.

Phantom File	dx=8mm dy=8mm
Phantom	5x5x7,dx=8mm dy=8mm dz=5mm
Device Position	Dipole
Band	835MHz
Channels	
Signal	CW

### B. SAR Measurement Results

#### Band SAR

E-Field Probe	SATIMO SN_04/13_EP166
Frequency (MHz)	835
Relative permittivity (real part)	54.82
Relative permittivity	20.48
Conductivity (S/m)	0.95
Power drift (%)	2.30
Ambient Temperature:	22.2 °C
Liquid Temperature:	22.5 °C
ConvF:	5.82
Duty factor:	1:1



Maximum location: X=7.00, Y=-1.00

SAR 10g (W/Kg)	1.632514
SAR 1g (W/Kg)	2.542683

## System Performance Check (Body, 1900MHz)

Type: Validation measurement

Area scan resolution: dx=8mm,dy=8mm

Zoom scan resolution: dx=8mm, dy=8mm, dz=5mm

Date of measurement: 10/10/2015

Measurement duration: 21 minutes 41seconds

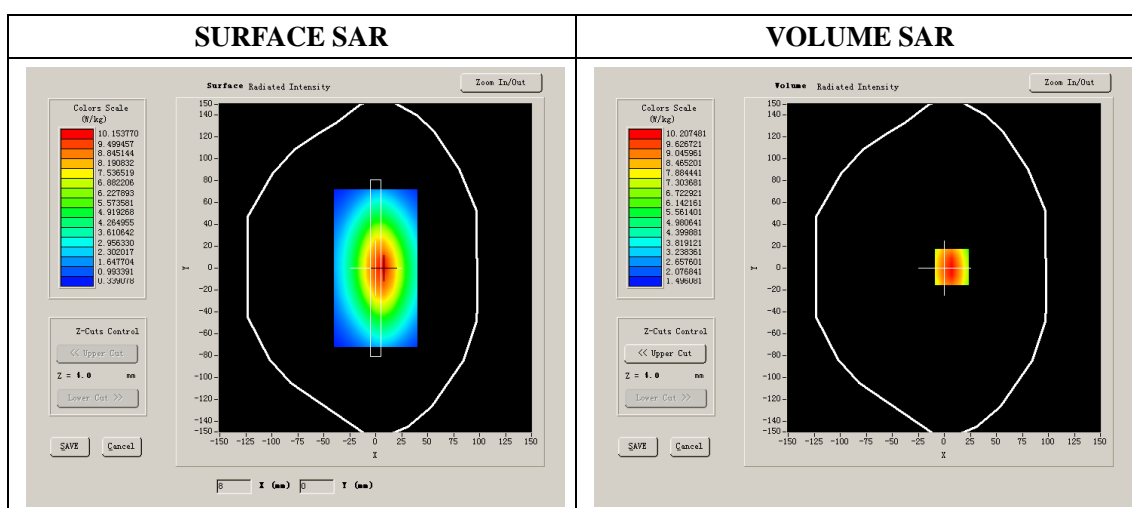
### A. Experimental conditions.

Phantom File	dx=8mm dy=8mm
Phantom	5x5x7,dx=8mm dy=8mm dz=5mm
Device Position	Dipole
Band	1900MHz
Channels	
Signal	CW

### B. SAR Measurement Results

#### Band SAR

E-Field Probe	SATIMO SN_04/13_EP166
Frequency (MHz)	1900
Relative permittivity (real part)	52.87
Relative permittivity	14.21
Conductivity (S/m)	1.50
Power Drift (%)	3.21
Ambient Temperature:	22.1 °C
Liquid Temperature:	22.6 °C
ConvF:	5.43
Duty factor:	1:1



Maximum location: X=1.00, Y=6.00

SAR 10g (W/Kg)	5.284627
SAR 1g (W/Kg)	10.128426

## System Performance Check (Body, 2450MHz)

Type: Phone measurement

Area scan resolution: dx=8mm,dy=8mm

Zoom scan resolution: dx=5mm, dy=5mm, dz=4mm

Date of measurement: 11/10/2015

Measurement duration: 22 minutes 21 seconds

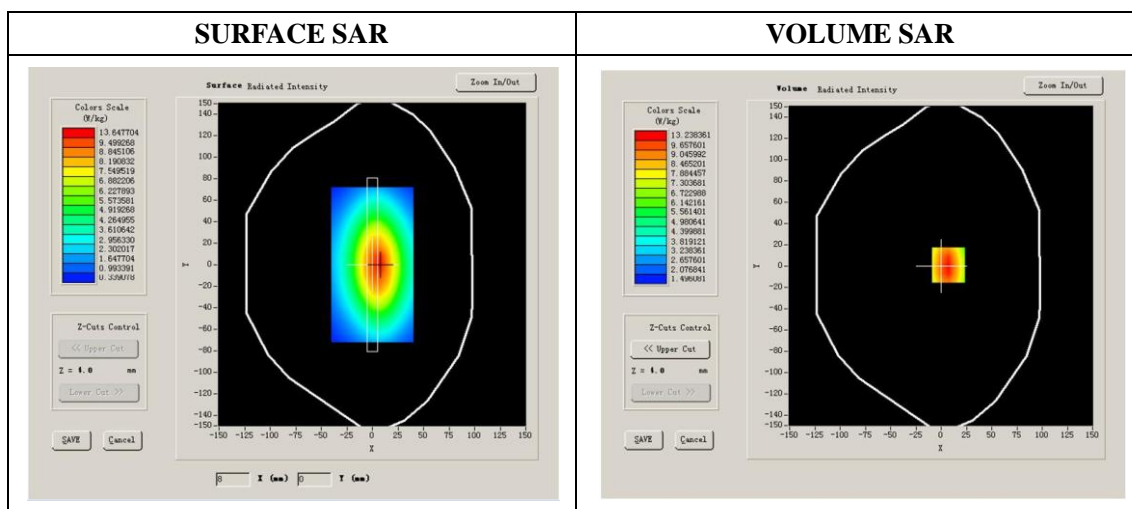
### A. Experimental conditions.

Phantom File	dx=8mm dy=8mm
Phantom	7x7x8,dx=5mm dy=5mm dz=4mm
Device Position	Dipole
Band	2450MHz
Channels	
Signal	CW

### B. SAR Measurement Results

#### Band SAR

E-Field Probe	SATIMO SN_04/13_EP166
Frequency (MHz)	2450
Relative permittivity (real part)	52.47
Relative permittivity	14.25
Conductivity (S/m)	1.94
Power Drift (%)	-0.31
Duty factor:	1:1
ConvF:	5.09



Maximum location: X=0.00, Y=8.00

SAR 10g (W/Kg)	6.046258
SAR 1g (W/Kg)	13.074232

## Plot 1:GSM850, Left Cheek, High

Type: Phone measurement

Date of measurement: 09/10/2015

Measurement duration: 6 minutes 33 seconds

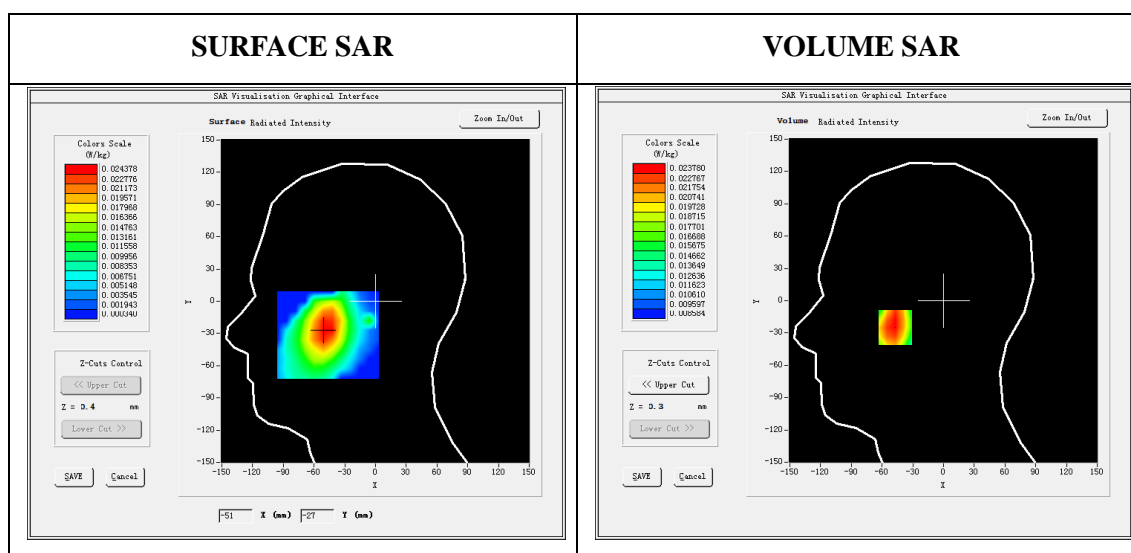
Mobile Phone IMEI number: --

### A. Experimental conditions.

Area Scan	dx=8mm dy=8mm
ZoomScan	5x5x7,dx=8mm dy=8mm dz=5mm
Phantom	Left head
Device Position	Cheek
Band	GSM850
Channels	251
Signal	GSM (Duty cycle: 1:8)

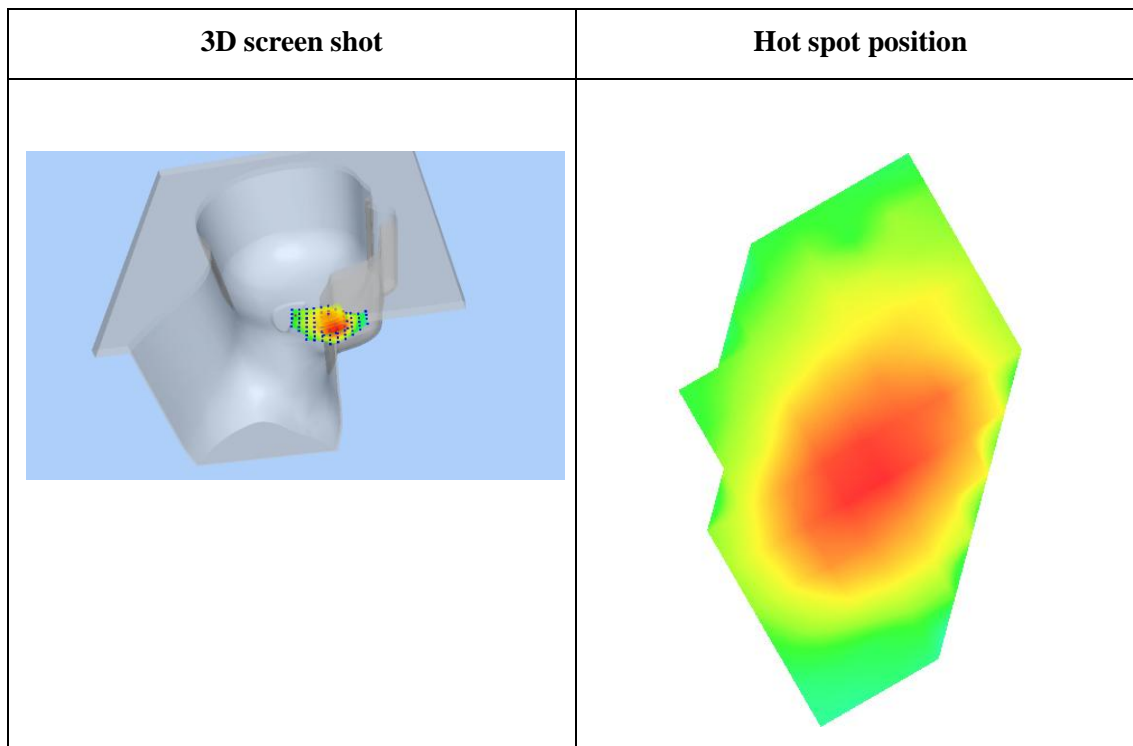
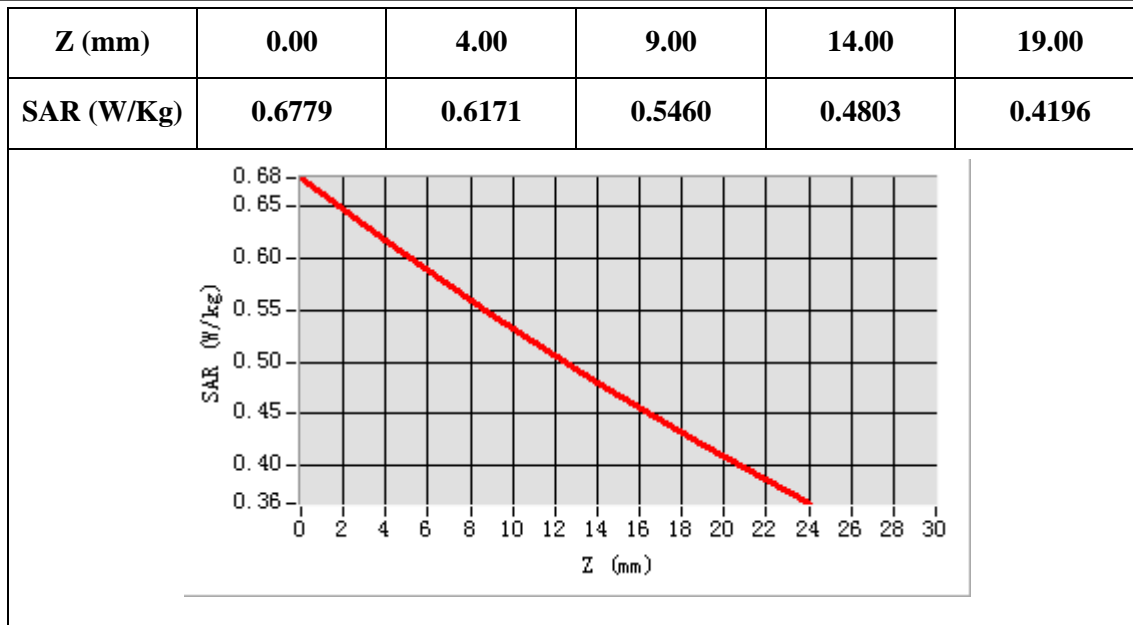
### B. SAR Measurement Results

E-Field Probe	SATIMO SN_04/13_EP166
Frequency (MHz)	848.8
Relative permittivity (real part)	41.32
Relative permittivity (imaginary part)	18.97
Conductivity (S/m)	0.88
Variation (%)	4.58
ConvF:	5.69



Maximum location: X=-47.00 Y=-25.00  
SAR Peak: 0.03W/kg

SAR 10g (W/Kg)	0.019854
SAR 1g (W/Kg)	0.023400



## Plot 2:GSM850, Back, High

Type: Phone measurement

Date of measurement: 09/10/2015

Measurement duration: 7 minutes 21seconds

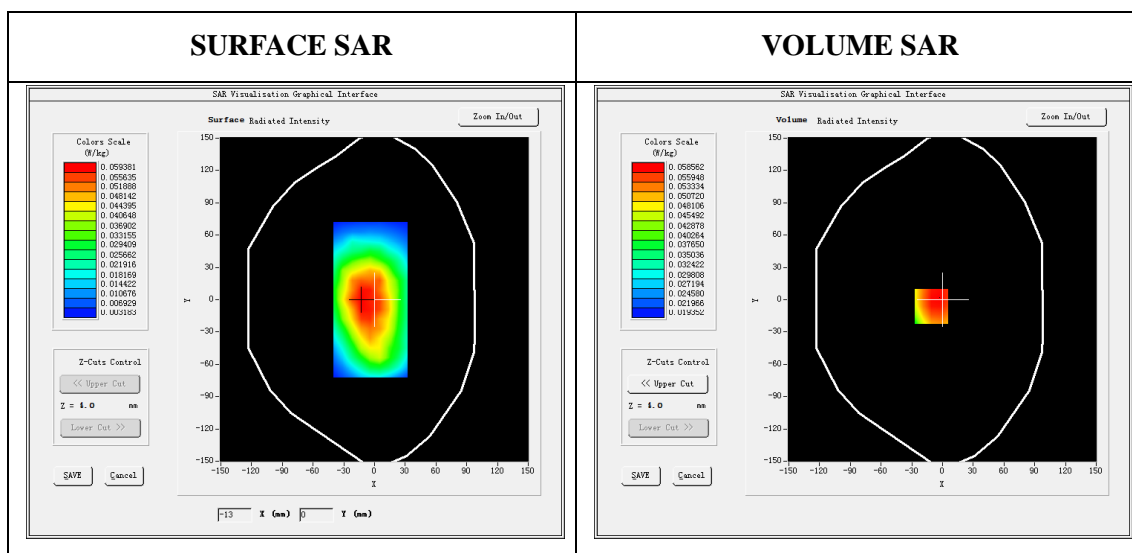
Mobile Phone IMEI number: --

### A. Experimental conditions.

Area Scan	dx=8mm dy=8mm
ZoomScan	5x5x7,dx=8mm dy=8mm dz=5mm
Phantom	Validation plane
Device Position	Back
Band	GSM850
Channels	251
Signal	GSM(Duty cycle: 1:8)

### B. SAR Measurement Results

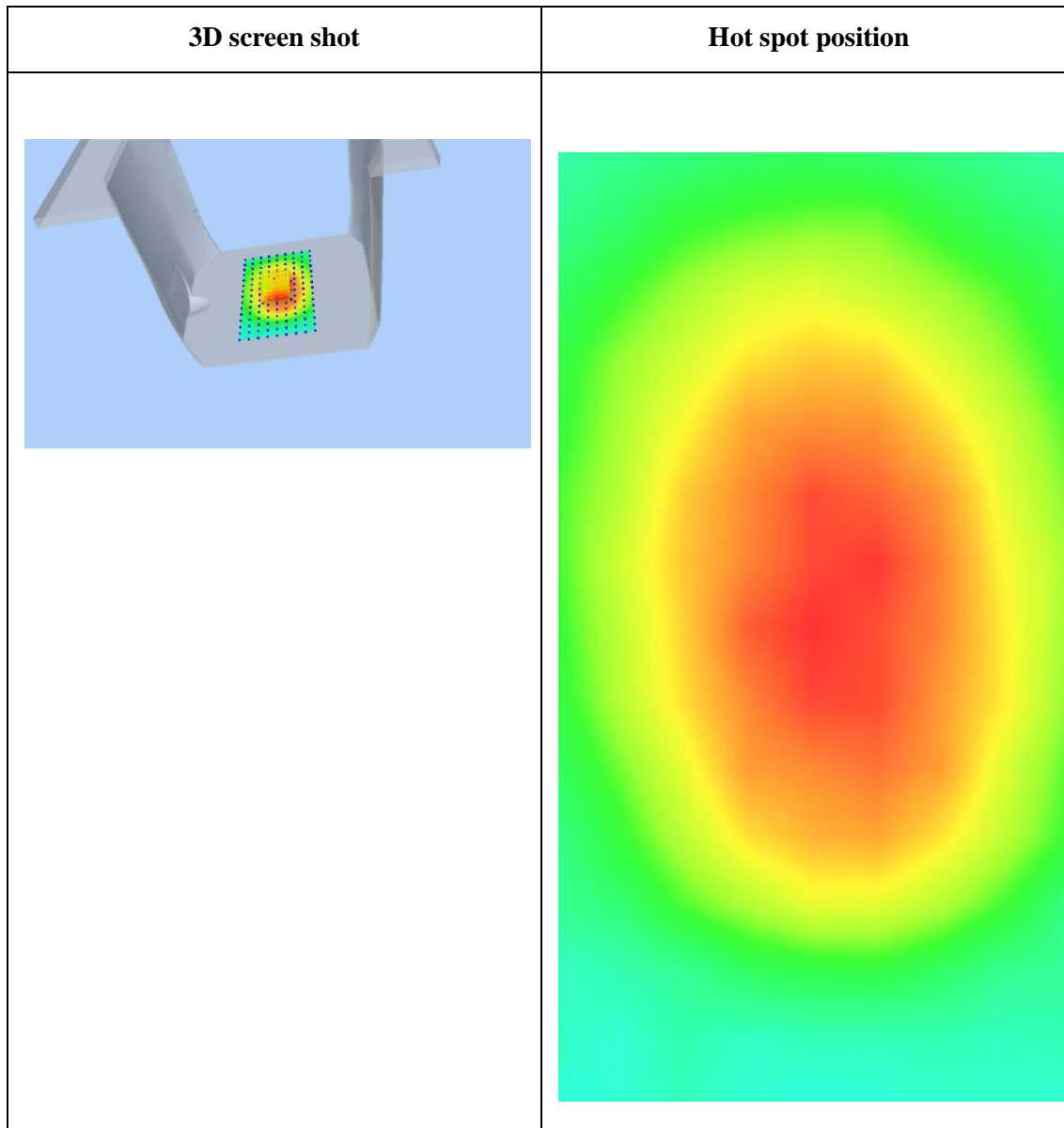
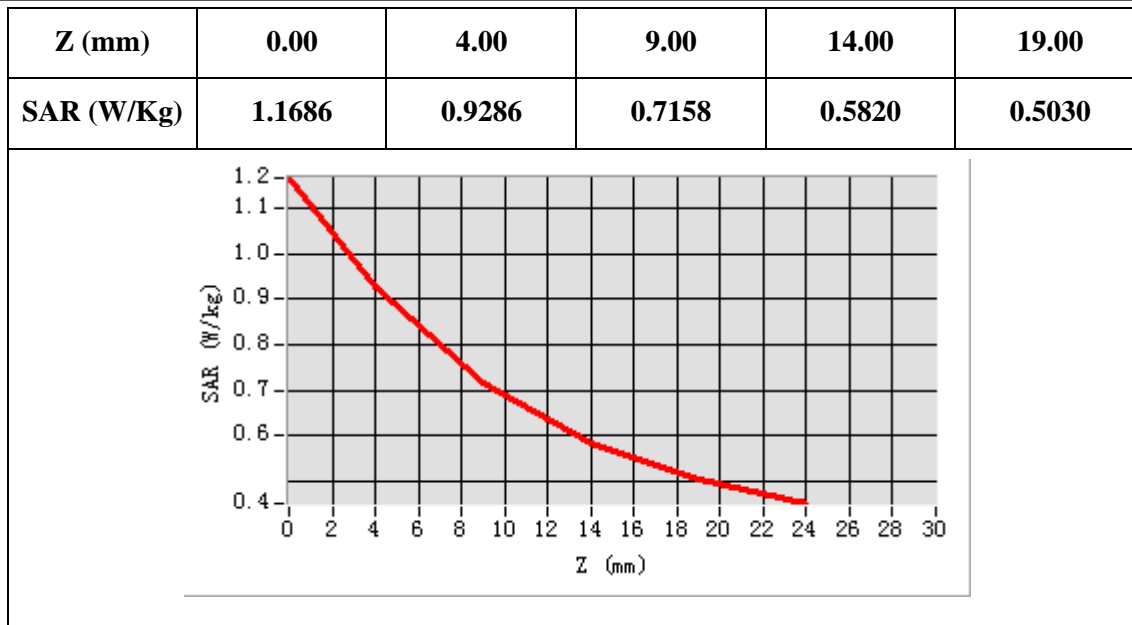
E-Field Probe	SATIMO SN_04/13_EP166
Frequency (MHz)	848.8
Relative permittivity (real part)	54.82
Relative permittivity (imaginary part)	20.48
Conductivity (S/m)	0.95
Variation (%)	-1.55
ConvF:	5.82



Maximum location: X=-11.00, Y=6.00

SAR Peak: 0.07W/kg

SAR 10g (W/Kg)	0.047224
SAR 1g (W/Kg)	0.057763





## Plot 3:GPRS850, Back, High

Type: Phone measurement

Date of measurement: 09/10/2015

Measurement duration: 7 minutes 11 seconds

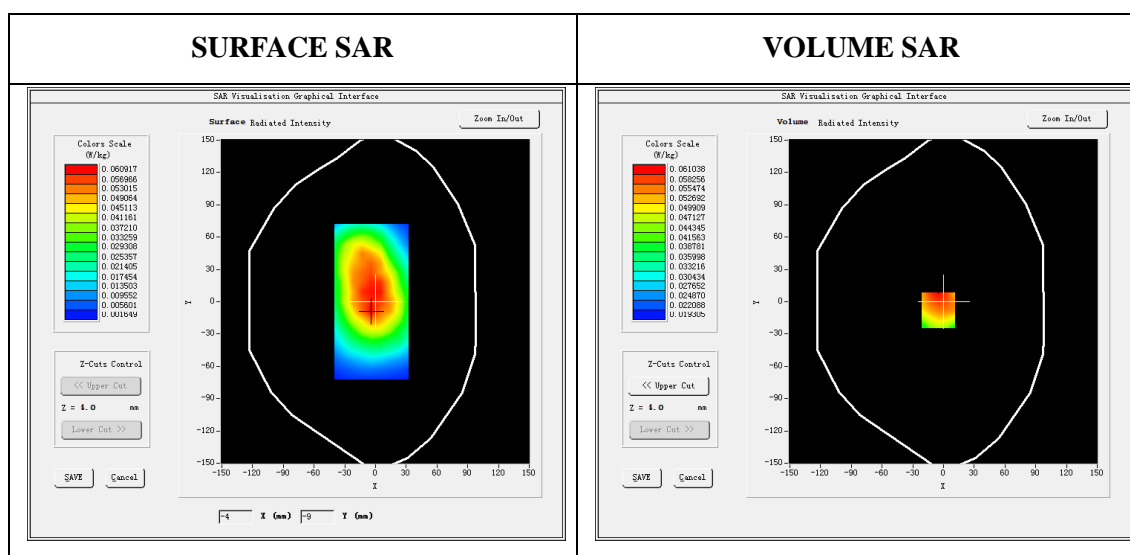
Mobile Phone IMEI number: --

### A. Experimental conditions.

Area Scan	dx=8mm dy=8mm
ZoomScan	5x5x7,dx=8mm dy=8mm dz=5mm
Phantom	Validation plane
Device Position	Back
Band	GSPRS850_2Tx
Channels	251
Signal	GPRS(Duty cycle: 1:4)

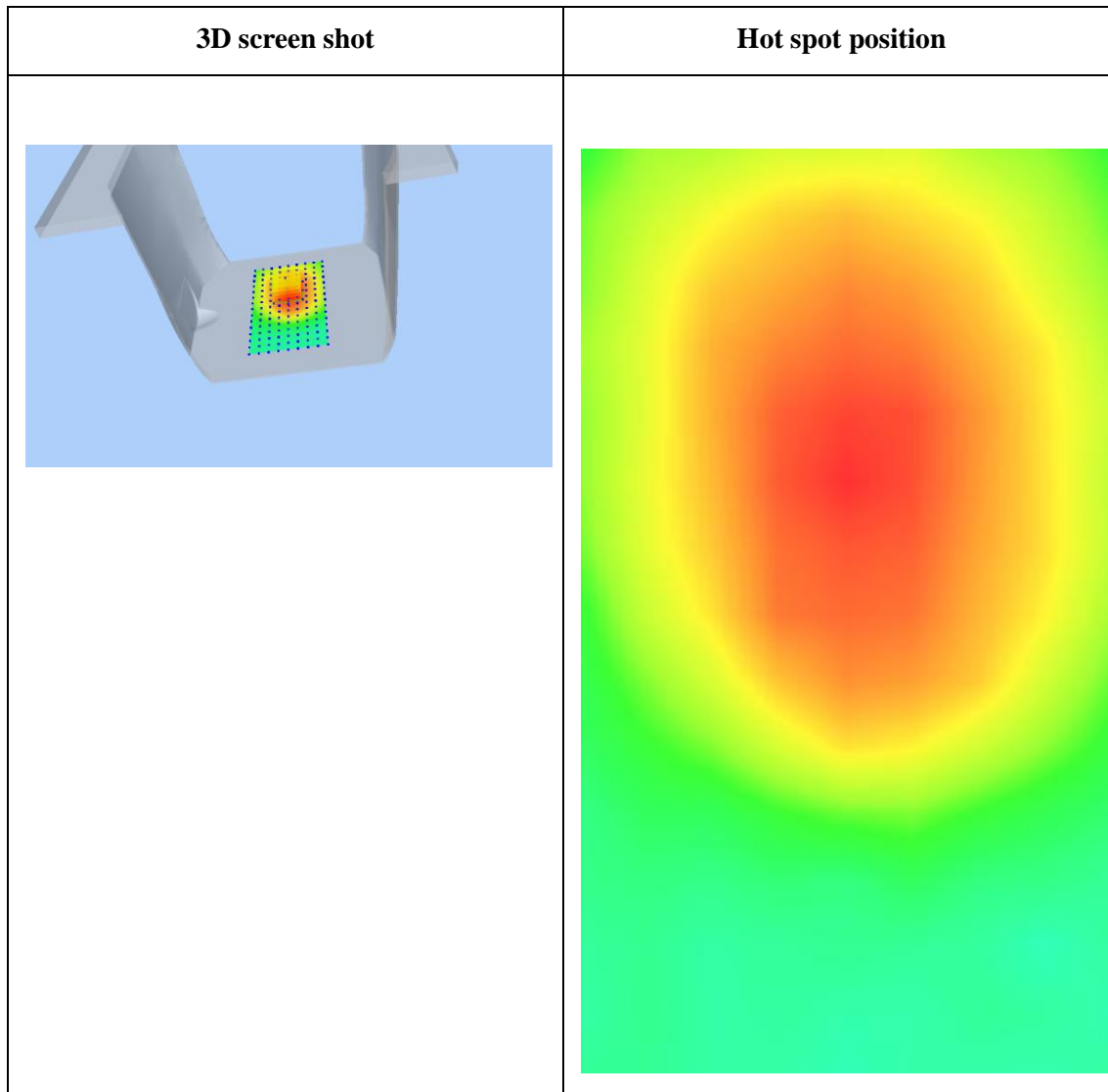
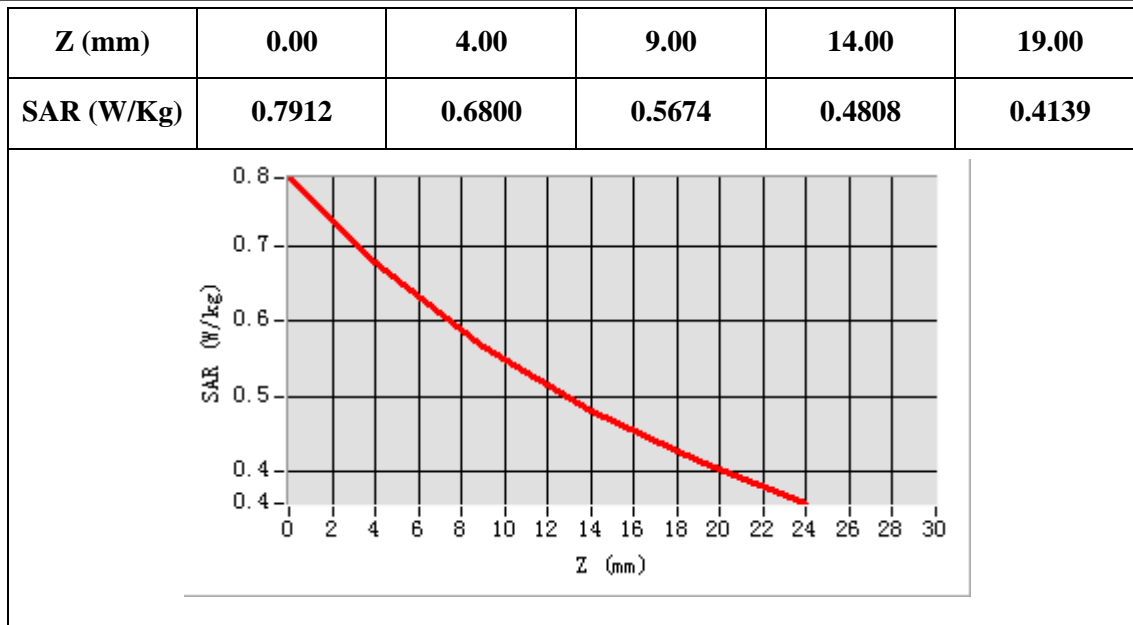
### B. SAR Measurement Results

E-Field Probe	SATIMO SN_04/13_EP166
Frequency (MHz)	848.8
Relative permittivity (real part)	54.82
Relative permittivity (imaginary part)	20.48
Conductivity (S/m)	0.95
Variation (%)	-2.96
ConvF:	5.82



Maximum location: X=-5.00, Y=-8.00  
SAR Peak: 0.07 W/kg

SAR 10g (W/Kg)	0.047047
SAR 1g (W/Kg)	0.058488



## Plot 4:GSM1900, Left Cheek, Low

Type: Phone measurement

Date of measurement: 10/10/2015

Measurement duration: 7 minutes 23 seconds

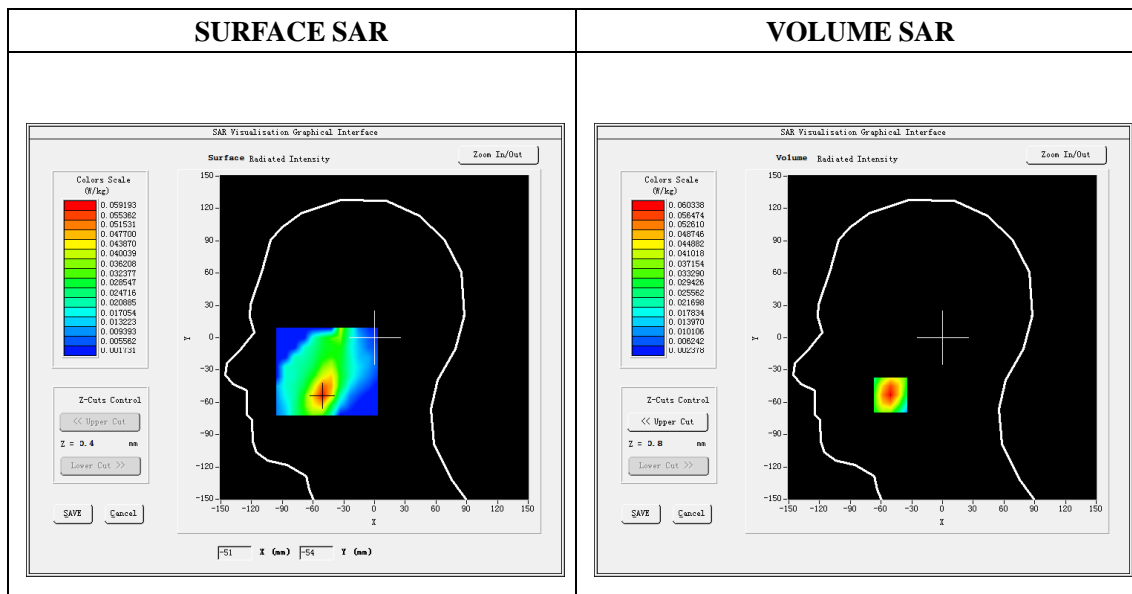
Mobile Phone IMEI number: --

### A. Experimental conditions.

Area Scan	dx=8mm dy=8mm
ZoomScan	5x5x7,dx=8mm dy=8mm dz=5mm
Phantom	Left head
Device Position	Cheek
Band	GSM1900
Channels	810
Signal	GSM (Duty cycle: 1:8)

### B. SAR Measurement Results

E-Field Probe	SATIMO SN_04/13_EP166
Frequency (MHz)	1909.8
Relative permittivity (real part)	39.84
Relative permittivity (imaginary part)	13.17
Conductivity (S/m)	1.39
Variation (%)	-4.75
ConvF:	5.25

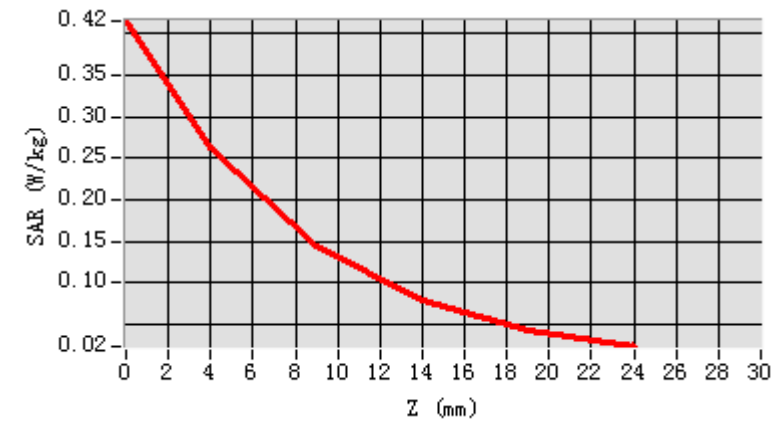


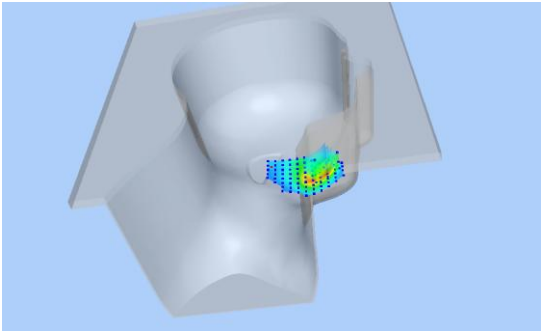
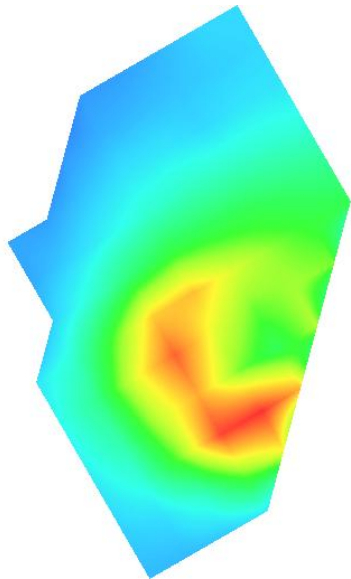
Maximum location: X=-51.00, Y=-53.00

SAR Peak: 0.08W/kg

SAR 10g (W/Kg)	0.034877
SAR 1g (W/Kg)	0.056664

Z (mm)	0.00	4.00	9.00	14.00	19.00
SAR (W/Kg)	0.4156	0.2628	0.1433	0.0775	0.0430



3D screen shot	Hot spot position
	

## Plot 5:GSM1900, Back, Low

Type: Phone measurement

Date of measurement: 10/10/2015

Measurement duration: 6 minutes 21 seconds

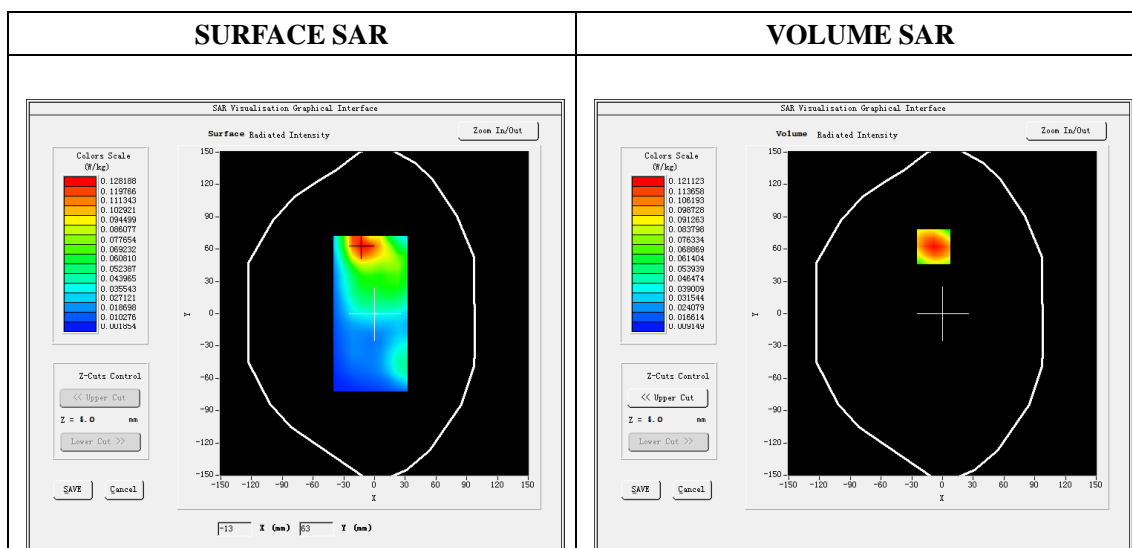
Mobile Phone IMEI number: --

### A. Experimental conditions.

Area Scan	dx=8mm dy=8mm
ZoomScan	5x5x7,dx=8mm dy=8mm dz=5mm
Phantom	Validation plane
Device Position	Back
Band	GSM1900
Channels	810
Signal	GSM (Duty cycle: 1:8)

### B. SAR Measurement Results

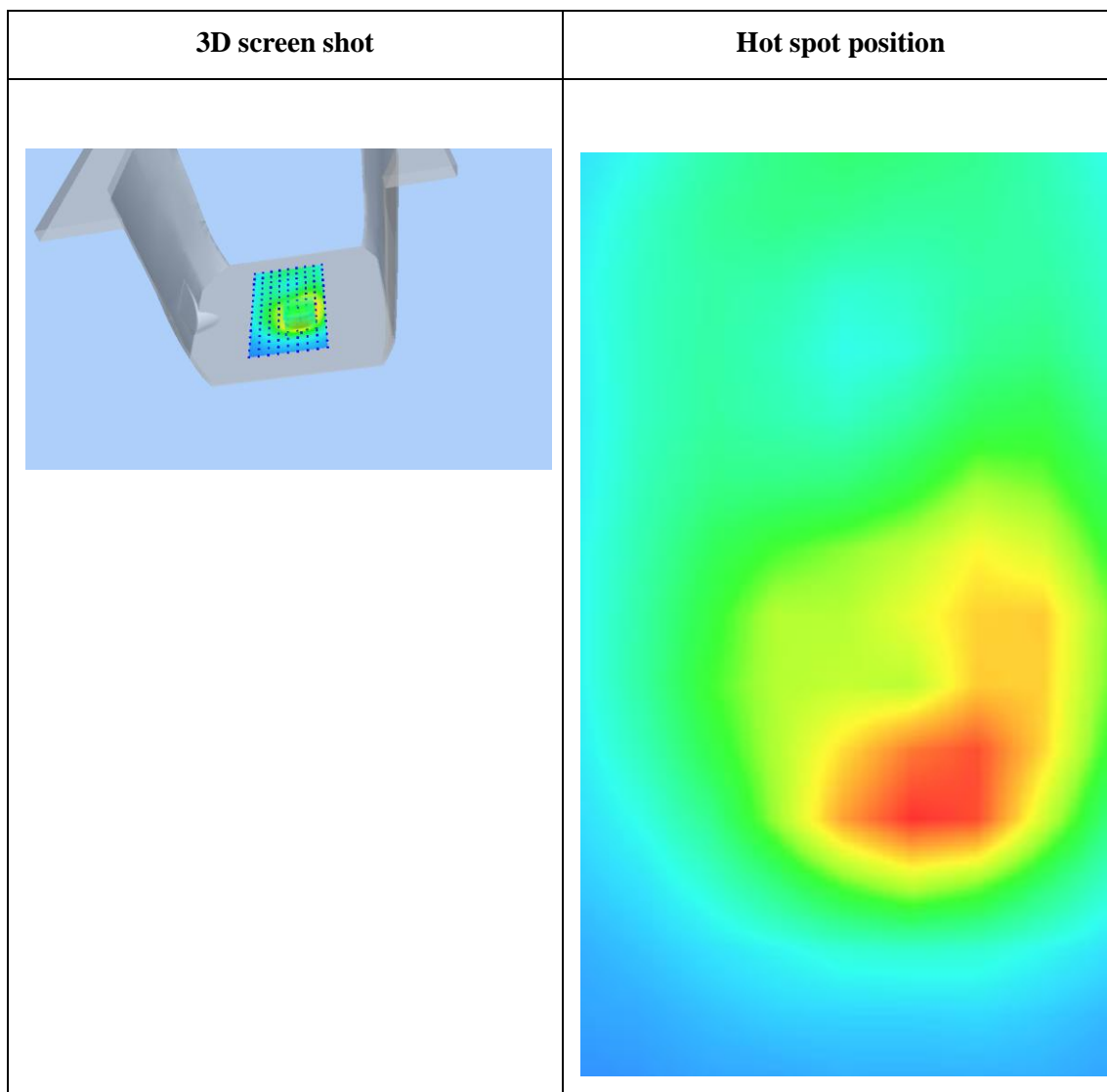
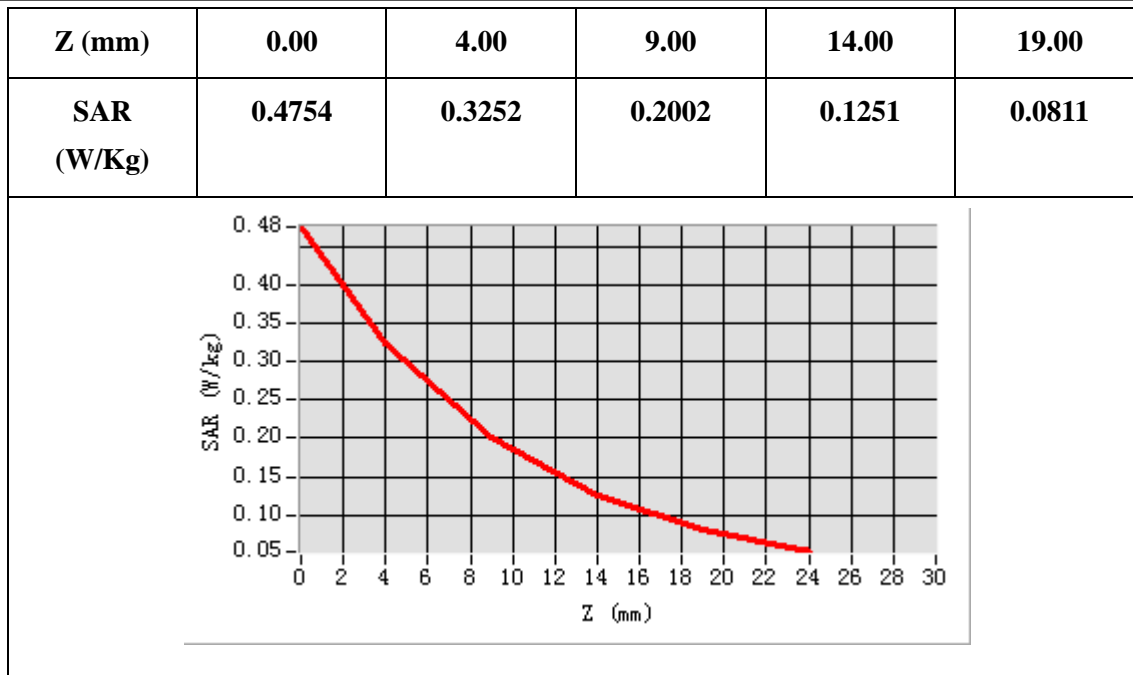
E-Field Probe	SATIMO SN_04/13_EP166
Frequency (MHz)	1909.8
Relative permittivity (real part)	52.87
Relative permittivity (imaginary part)	14.21
Conductivity (S/m)	1.50
Variation (%)	3.99
ConvF:	5.43



Maximum location: X=-9.00, Y=62.00

SAR Peak: 0.18 W/kg

SAR 10g (W/Kg)	0.068779
SAR 1g (W/Kg)	0.114084



## Plot 6:GPRS1900, Edge C, High

Type: Phone measurement

Date of measurement: 10/10/2015

Measurement duration: 6 minutes 34 seconds

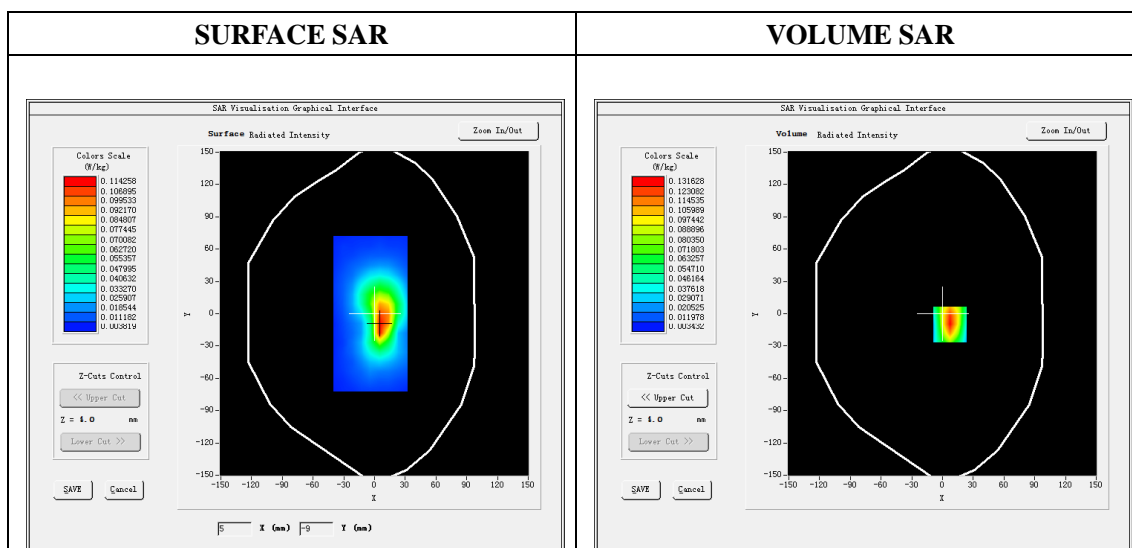
Mobile Phone IMEI number: --

### A. Experimental conditions.

Area Scan	dx=8mm dy=8mm
ZoomScan	5x5x7,dx=8mm dy=8mm dz=5mm
Phantom	Validation plane
Device Position	Body
Band	GSPRS1900_3Tx
Channels	810
Signal	GPRS (Duty cycle: 1:2.67)

### B. SAR Measurement Results

E-Field Probe	SATIMO SN_04/13_EP166
Frequency (MHz)	1909.8
Relative permittivity (real part)	52.87
Relative permittivity (imaginary part)	14.21
Conductivity (S/m)	1.50
Variation (%)	4.39
ConvF:	5.43

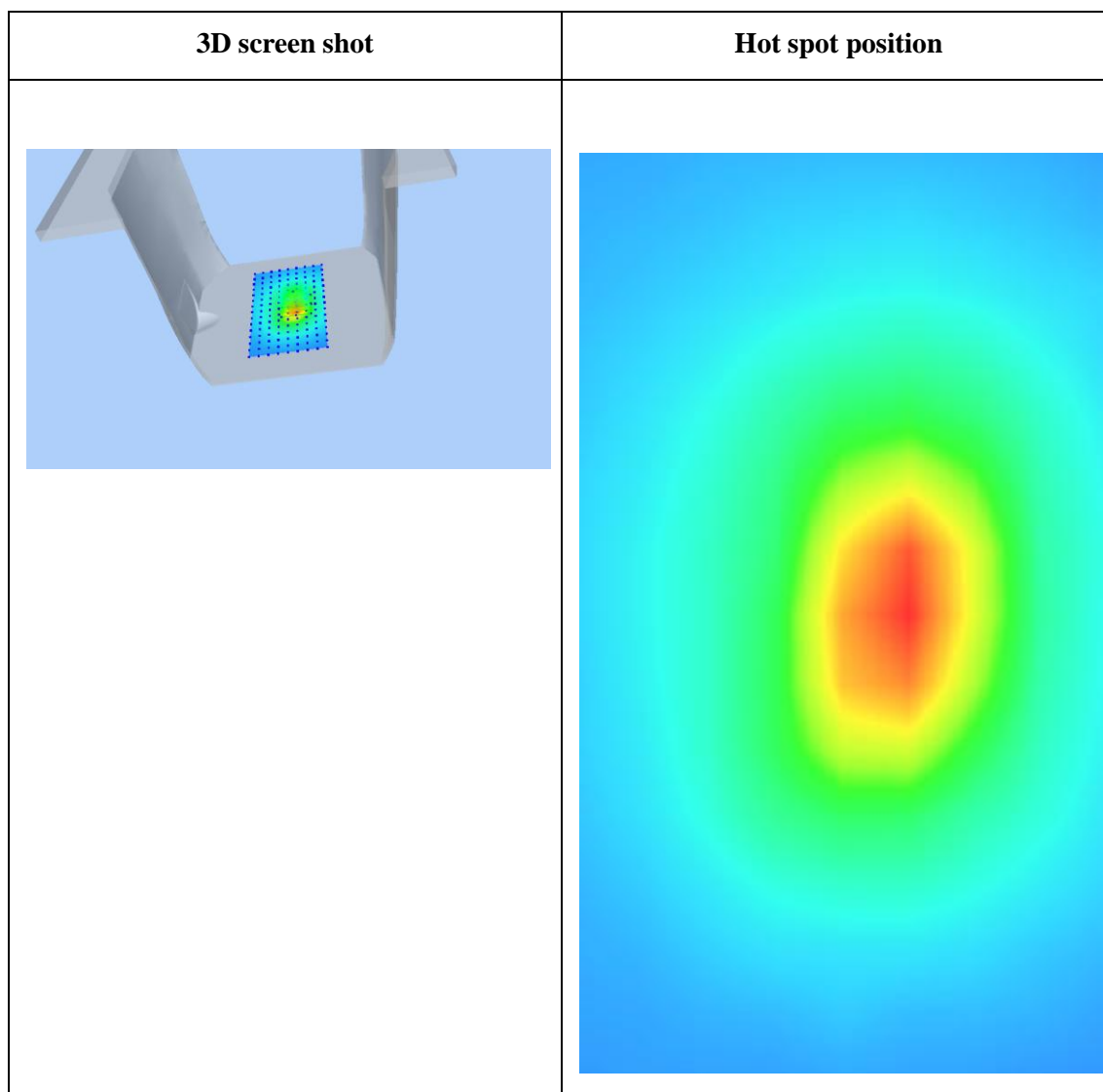
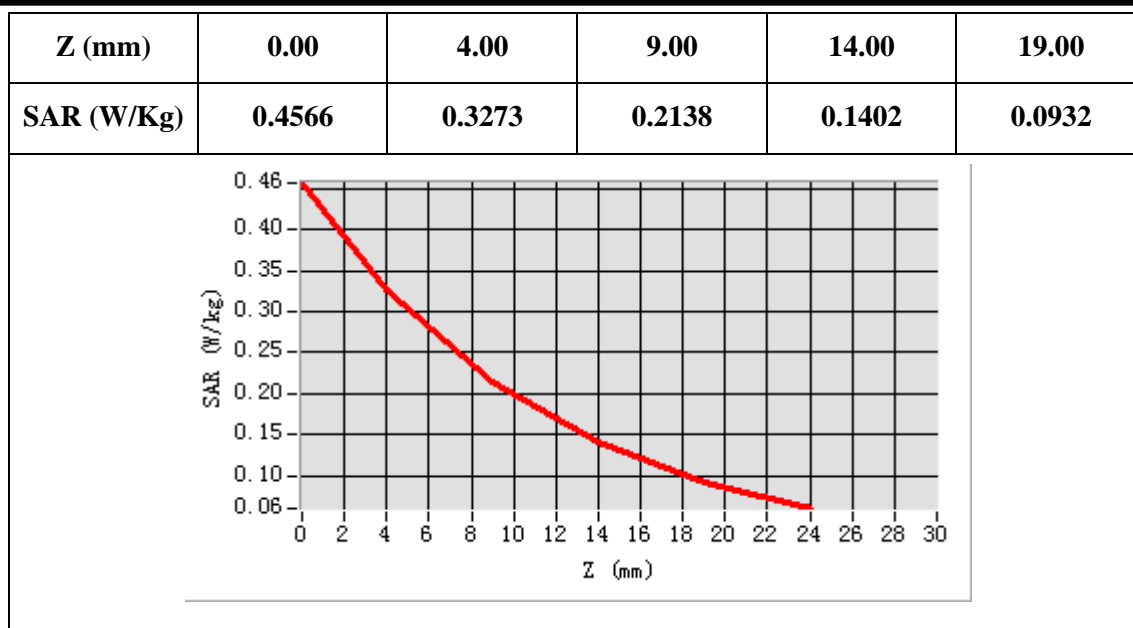


Maximum location: X=7.00, Y=-10.00

SAR Peak: 0.20 W/kg

SAR 10g (W/Kg)	0.065388
SAR 1g (W/Kg)	0.122703





## Plot 7: WCDMA850, Left Cheek, Middle

Type: Phone measurement

Date of measurement: 09/10/2015

Measurement duration: 6 minutes 18 seconds

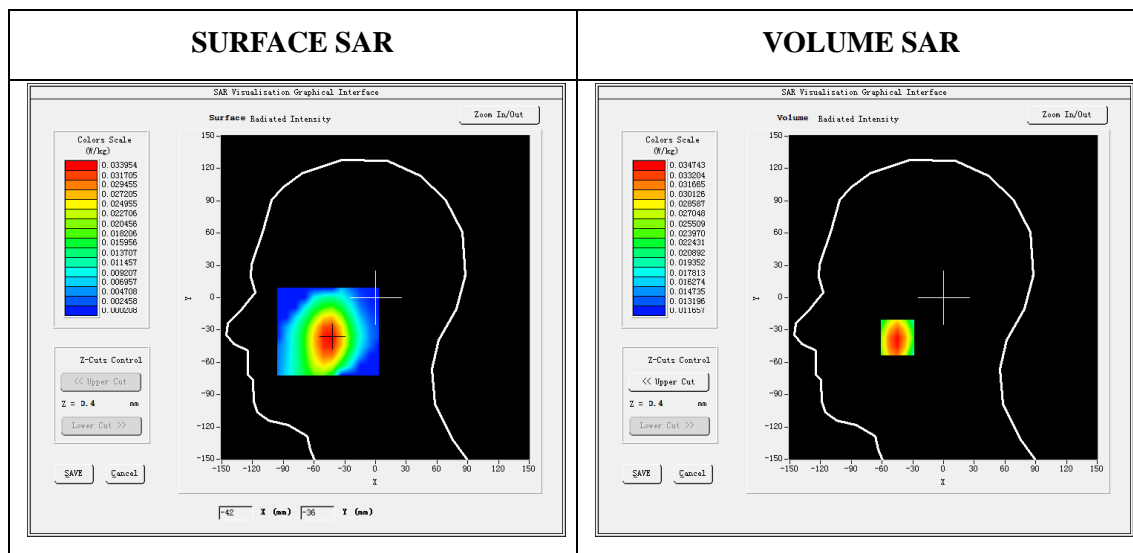
Mobile Phone IMEI number: --

### A. Experimental conditions.

Area Scan	dx=8mm dy=8mm
ZoomScan	5x5x7, dx=8mm dy=8mm dz=5mm
Phantom	Left head
Device Position	Cheek
Band	Band5_WCDMA850
Channels	4183
Signal	WCDMA (Duty cycle: 1:1)

### B. SAR Measurement Results

E-Field Probe	SATIMO SN_04/13_EP166
Frequency (MHz)	836.6
Relative permittivity (real part)	41.32
Relative permittivity (imaginary part)	18.97
Conductivity (S/m)	0.88
Variation (%)	-4.50
ConvF:	5.69

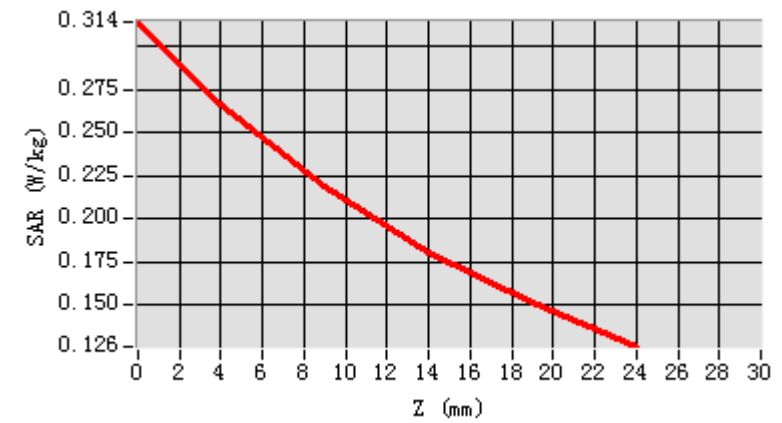


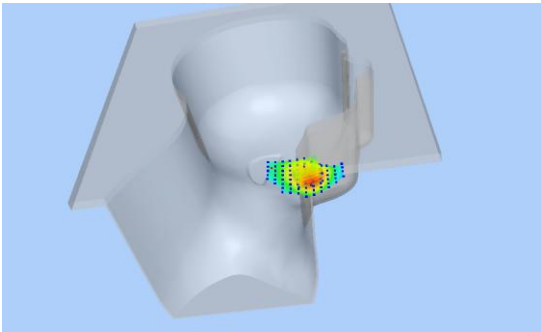
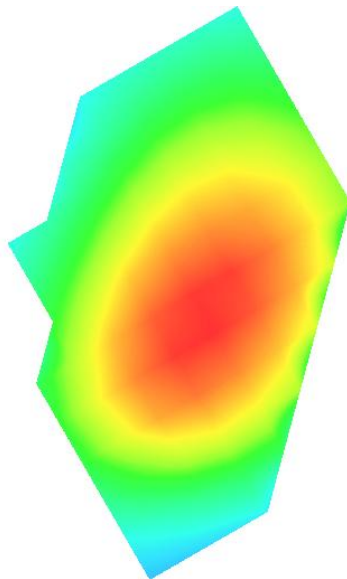
Maximum location: X=-45.00, Y=-37.00

SAR Peak: 0.04 W/kg

SAR 10g (W/Kg)	0.027893
SAR 1g (W/Kg)	0.033867

Z (mm)	0.00	4.00	9.00	14.00	19.00
SAR (W/Kg)	0.3141	0.2669	0.2187	0.1809	0.1511



3D screen shot	Hot spot position
	

## Plot 8:WCDMA850, Back, Middle

Type: Phone measurement

Date of measurement:09/10/2015

Measurement duration: 7 minutes 25 seconds

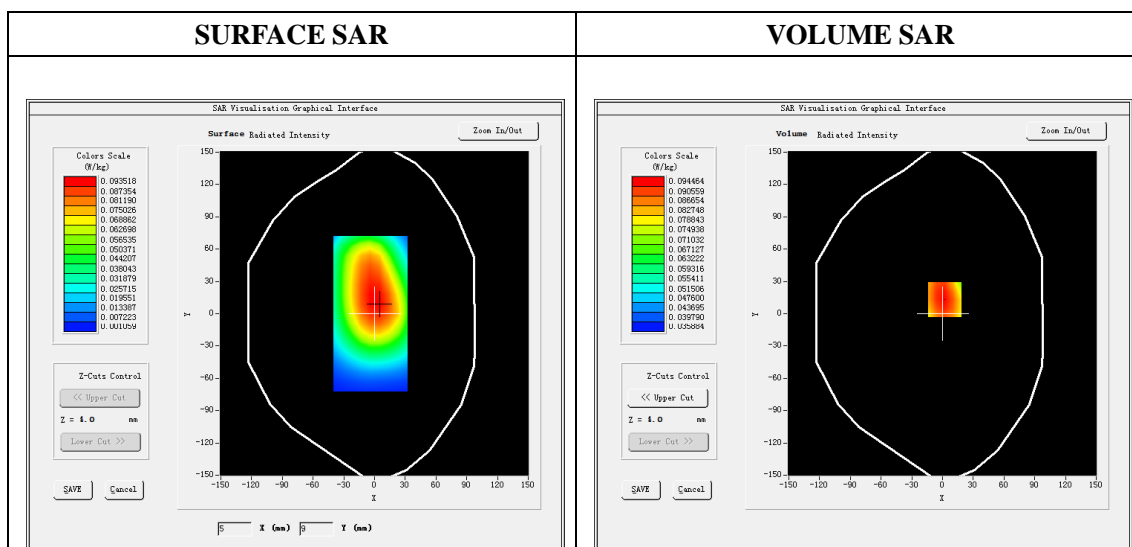
Mobile Phone IMEI number: --

### A. Experimental conditions.

Area Scan	dx=8mm dy=8mm
ZoomScan	5x5x7,dx=8mm dy=8mm dz=5mm
Phantom	Validation plane
Device Position	Back
Band	Band5_WCDMA850
Channels	4183
Signal	WCDMA (Duty cycle: 1:1)

### B. SAR Measurement Results

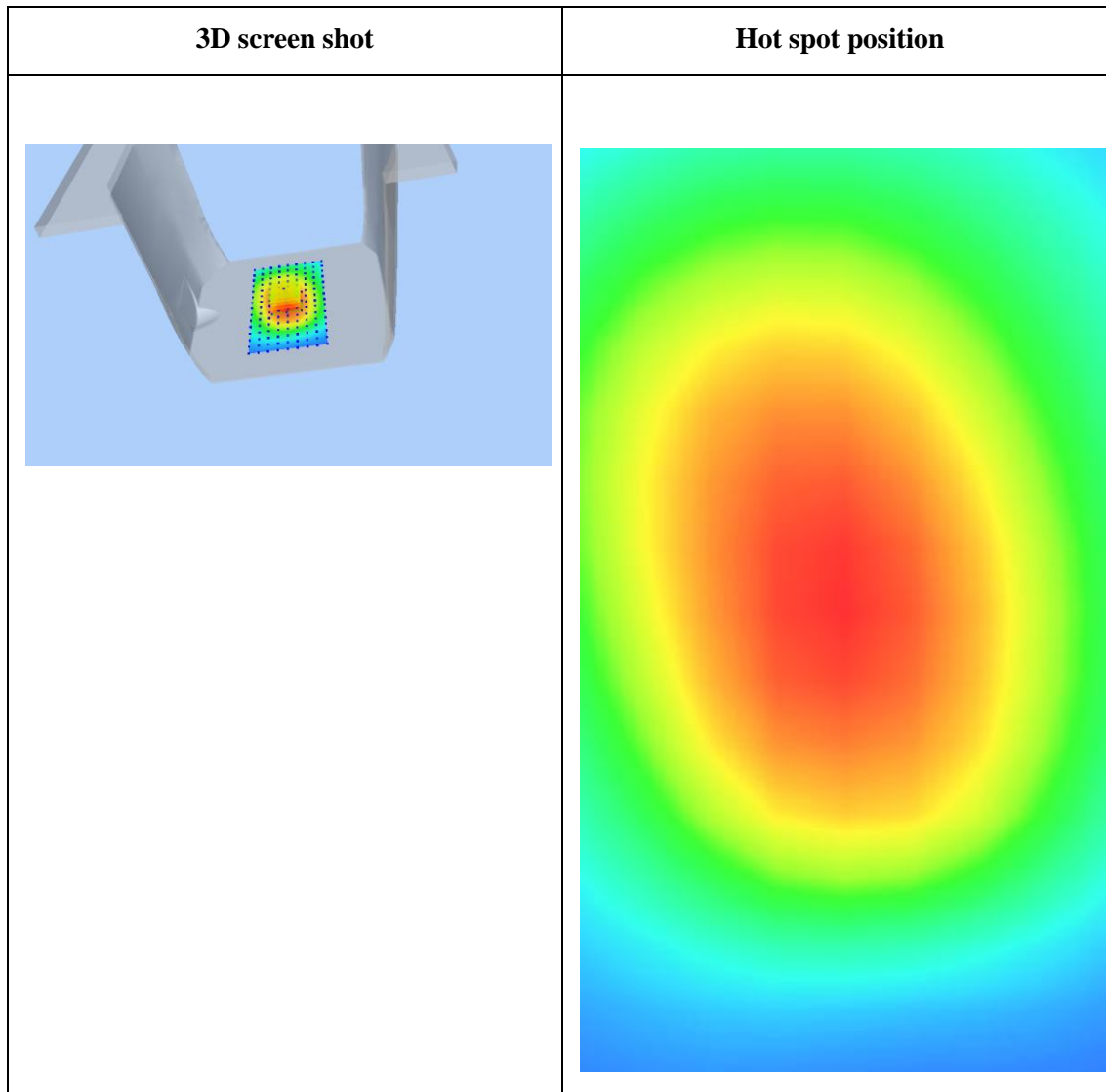
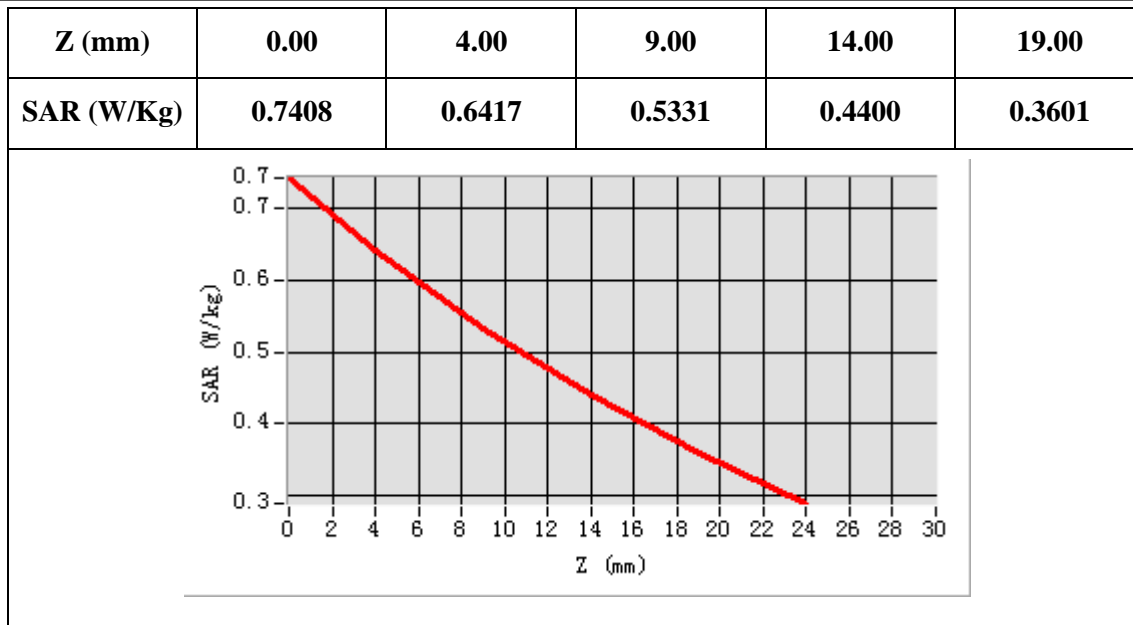
E-Field Probe	SATIMO SN_04/13_EP166
Frequency (MHz)	836.6
Relative permittivity (real part)	54.82
Relative permittivity (imaginary part)	20.48
Conductivity (S/m)	0.95
Variation (%)	-0.43
ConvF:	5.82



Maximum location: X=2.00, Y=13.00

SAR Peak: 0.12 W/kg

SAR 10g (W/Kg)	0.082257
SAR 1g (W/Kg)	0.101140



## Plot 9: WCDMA1900, Left Cheek, Middle

Type: Phone measurement

Date of measurement: 10/10/2015

Measurement duration: 7 minutes21 seconds

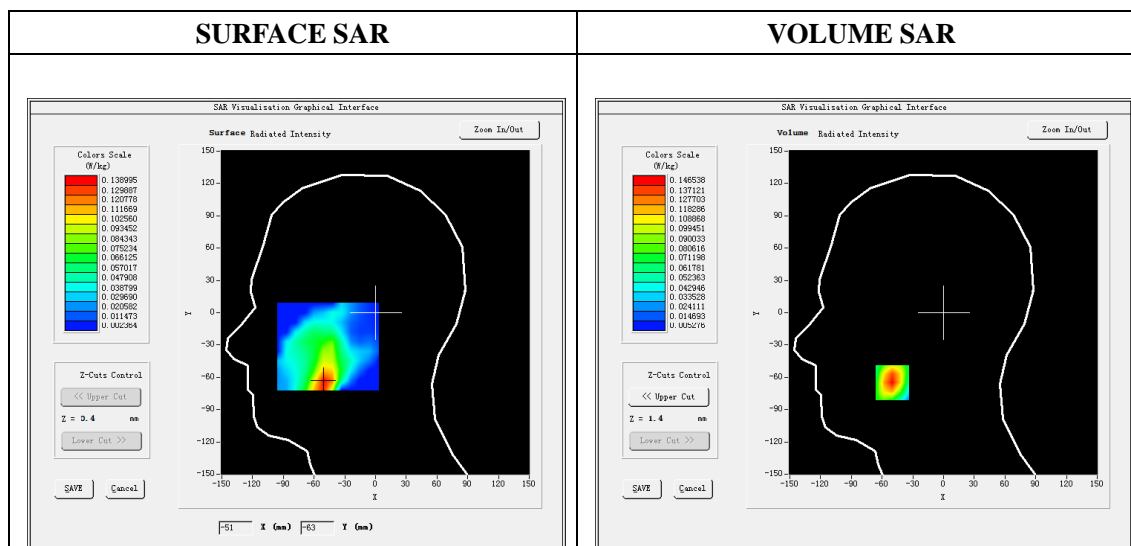
Mobile Phone IMEI number: --

### A. Experimental conditions.

Area Scan	dx=8mm dy=8mm
ZoomScan	5x5x7,dx=8mm dy=8mm dz=5mm
Phantom	Validation plane
Device Position	Left head
Band	Cheek
Channels	9400
Signal	WCDMA (Duty cycle: 1:1)

### B. SAR Measurement Results

E-Field Probe	SATIMO SN_04/13_EP166
Frequency (MHz)	1880.00
Relative permittivity (real part)	39.84
Relative permittivity (imaginary)	13.17
Conductivity (S/m)	1.39
Variation (%)	2.73
ConvF:	5.25

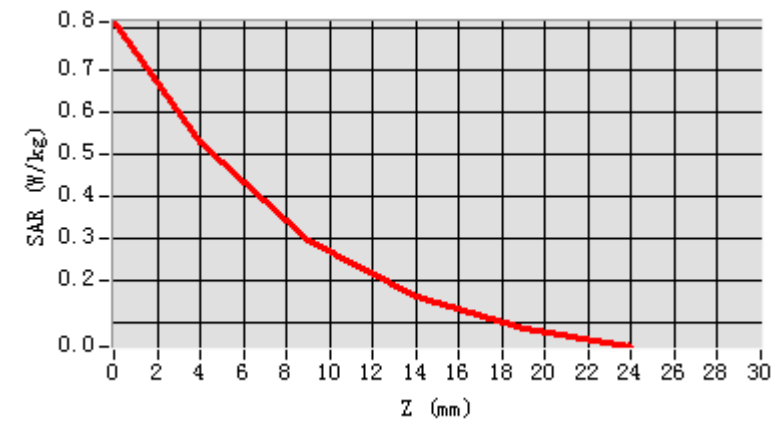


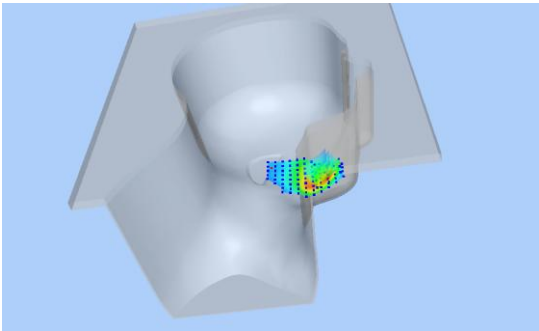
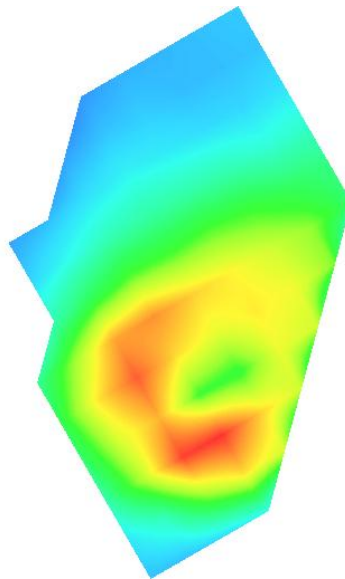
Maximum location: X=-50.00, Y=-65.00

SAR Peak: 0.19 W/kg

SAR 10g (W/Kg)	0.085329
SAR 1g (W/Kg)	0.137185

Z (mm)	0.00	4.00	9.00	14.00	19.00
SAR (W/Kg)	0.8167	0.5293	0.2968	0.1620	0.0871



3D screen shot	Hot spot position
	



## Plot 10:WCDMA1900, Back, Middle

Type: Phone measurement

Date of measurement: 10/10/2015

Measurement duration: 7 minutes 21 seconds

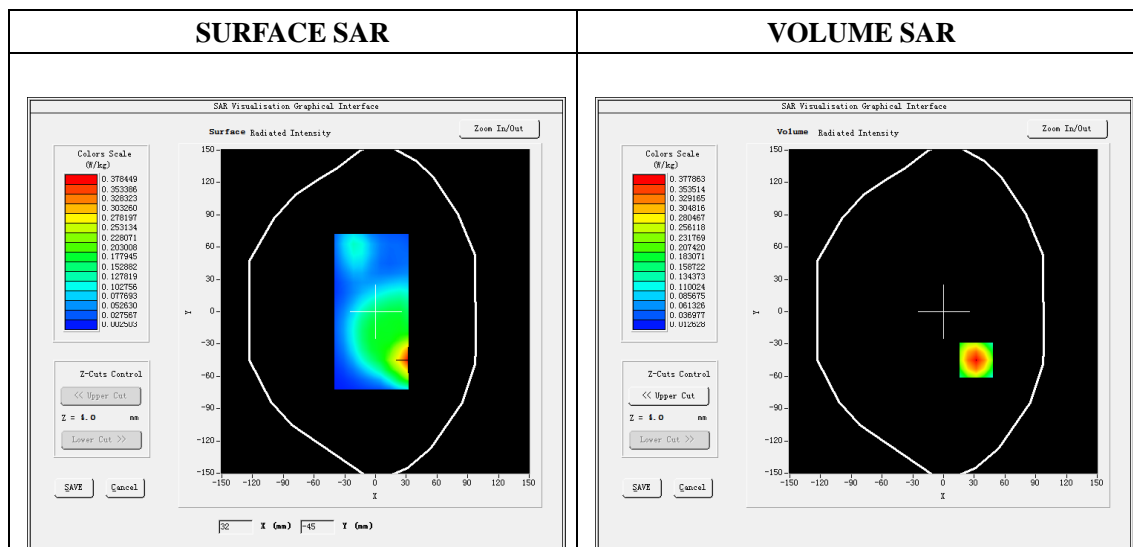
Mobile Phone IMEI number: --

### A. Experimental conditions.

Area Scan	dx=8mm dy=8mm
ZoomScan	5x5x7,dx=8mm dy=8mm dz=5mm
Phantom	Validation plane
Device Position	Body
Band	Band2_WCDMA1900
Channels	9400
Signal	WCDMA (Duty cycle: 1:1)

### B. SAR Measurement Results

E-Field Probe	SATIMO SN_04/13_EP166
Frequency (MHz)	1880.0
Relative permittivity (real part)	52.87
Relative permittivity (imaginary)	14.21
Conductivity (S/m)	1.50
Variation (%)	-0.11
ConvF:	5.43



Maximum location: X=32.00, Y=-45.00

SAR Peak: 0.65 W/kg

SAR 10g (W/Kg)	0.216747
SAR 1g (W/Kg)	0.394124

