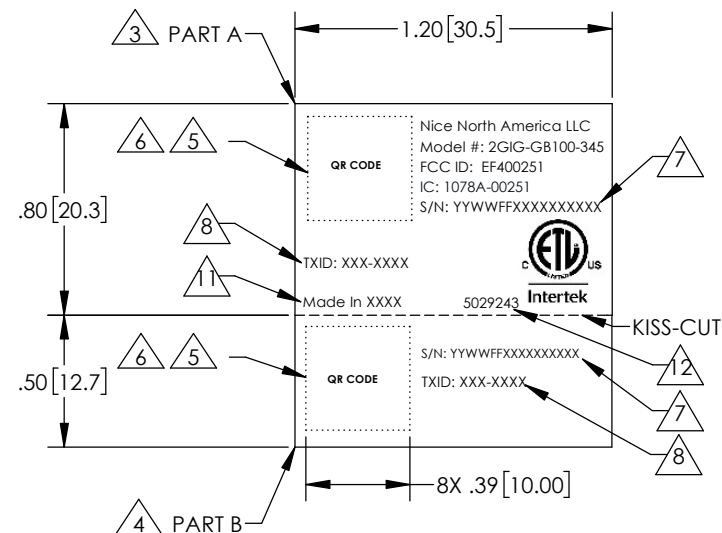



4	3	2	1
REVISIONS			
REV	DESCRIPTION	DATE	APPROVED
X1	INITIAL RELEASE	10/15/2024	

NOTES: (UNLESS OTHERWISE SPECIFIED)

1. MATERIAL: 2 PART, FASSON 2MIL HIGH GLOSS WHITE POLYESTER NTC/S33/BG50#WHT OR EQUIVALENT, ADHESIVE BACKED. MATERIAL AND PRINTER SHALL BE UL APPROVED OR RECOGNIZED.
2. RIBBON INK: BLACK, RICOH B110A-W3 OR EQUIVALENT.
3. PART A TO BE APPLIED AT MECHANICAL ASSEMBLY LEVEL.
4. PART B TO BE APPLIED ON UNIT BOX AT FINISHED GOOD LEVEL.
5. QR CODE SHALL BE ENCODED AS FOLLOWS:
(A)TXID: 7 DIGIT PART NUMBER CODE FOR EXAMPLE: TX ID 000-0088 BARCODE CONTENT: 0000088.
(B) DATE CODED SERIAL NUMBER IN FORMAT OF YYWWFFXXXXXXXXXX (SEE FORMAT 10004614).
NOTE: THIS SERIAL NUMBER MUST MATCH SERIAL NUMBER ON LABEL INSTALLED AT PCB ASSEMBLY LEVEL.
6. QR CODE TO BE PRINTED WITH MINIMUM 600 DPI.
7. SERIAL NUMBER IS FROM NOTE 5 AND IS HUMAN READABLE.
8. TXID FORMAT: 7 DIGIT PART NUMBER CODE FOR EXAMPLE: TX ID 000-0088 BARCODE CONTENT: 0000088.
TXID NUMBER TO BE CORRELATED TO PRODUCT SERIAL NUMBER AND MAINTAINED IN MES DATABASE.
9. TOLERANCE: $\pm .020$ [0.51].
10. PART SHALL BE RoHS COMPLIANT.
11. REPLACE XXXX WITH COUNTRY OF ORIGIN, EXAMPLE: Made in China.
12. PRINT FACTORY CODE NEXT TO ETL LOGO AS SHOWN.



LABEL DETAIL

UNLESS OTHERWISE NOTED ALL DIMENSIONS ARE INCHES [MM].		PROJECT:		<div>Nice</div>									
TOLERANCES: DECIMALS ANGLES: ±0.5° .XXx01 [.3] ROUNDNESS±.005 [.13] .XXx020 [.51] FLATNESS: ±.005 [.13] CONCENTRICITY±.005 [.13]		CAD OPERATOR: YunMin.liu		DATE 10/15/2024		TITLE: LABEL, QR, S/N, TXID, FCC, 2 PART, 2GIG-GB100-345							
MATERIAL: NOTED		CHECKED:		DATE		SIZE: B				DRAWING NO.: 10034987		REV.: X1	
FINISH:		APPROVED:		DATE		SCALE: 2:1		DO NOT SCALE DRAWING		SHEET: 1 OF 1			

THE INFORMATION CONTAINED IN THIS DRAWING IS
THE SOLE PROPERTY OF Nice. ANY REPRODUCTION IN
PART OR AS A WHOLE WITHOUT WRITTEN PERMISSION
OF Nice IS PROHIBITED.
© 2022 Nice.

location: on the EUT

