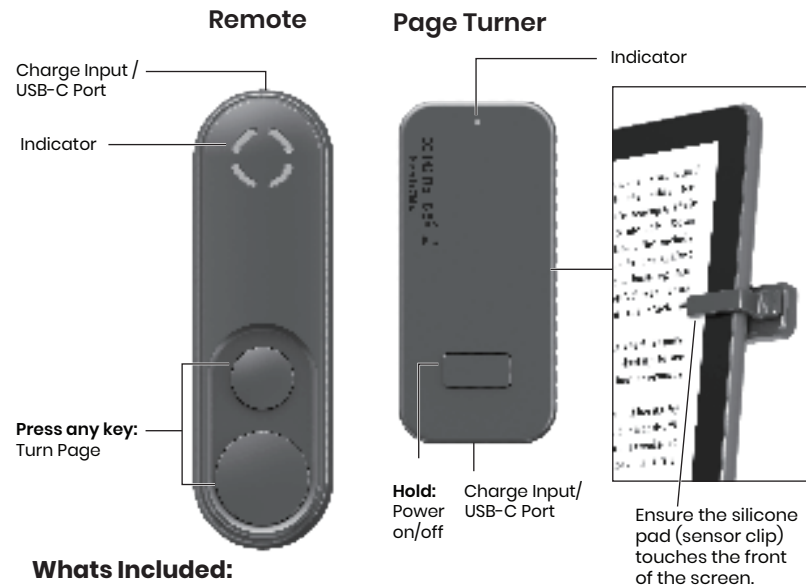


4.65 inches

7 inches

Page Turning Remote

Universal Touch Remote for E-readers
and Touch Screen Devices



Whats Included:

- Page Turner
- Remote Control
- USB-A to USB-C Charging Cable

Indicator:

- ⦿ One Light - 25% charged (Remote)
- ⦿ Two Lights - 50% charged (Remote)
- ⦿ Three Lights - 75% charged (Remote)
- ⦿ Four Lights - 100% charged (Remote)
- ⦿ Flashing Red - Low Battery/Charging (Page Turner)
- ⦿ No Light - Fully Charged (Page Turner)

Charging:

- Full charge for page turner or for remote requires approximately 2 hours.
- Using the USB-C cable provided, plug the USB-C end into the page turner or remote and the USB-A end into a USB power supply of at least DC 5V 1A. **Warning:** Please use a UL compliant power supply.
- Page turner - The indicator light will flash red when charging, and turn off when charging is complete.
- Remote - The indicator light will flash red or blue when charging, and the indicator light will turn solid blue when charging is complete.

How to Use:

- Hold the power button to turn the page turner on, the indicator will turn solid red.
- Press any button on the remote control to on, the remote and the page turner will automatically connect. The page turner flashes blue when the connection is successful.
- Clip the page turner to your e-reader, making sure the clip is facing towards you when reading the e-reader and it is on the right side of the screen.
- Use the remote to turn pages by clicking buttons.
- Note:** When the remote control has been idle for more than 10 minutes, the page turner will automatically enter the hibernation energy-saving standby mode. Press the power button of the page-turner to wake it up. The page turner will flash a blue light, press the remote control to use it.

Troubleshooting:

- If the page turner and remote are not working correctly, hold power button of the page turner on/off to reset.
- If the page turner and remote won't turn on, recharge the battery and try again.
- If the page turner and remote won't charge, make sure the supply works, is 5V 1A, and not damaged.
- Keep the silicone pad (sensor clip) of the page turner trigger area clean.
- When using the page turner, be sure the total thickness of the e-reader and cover don't exceed 13.5mm (0.54 inch).
- When the page turner won't turn pages, try moving it different positions and directions on the screen to find a suitable point to trigger.

Safety:

- Do not modify or repair this device.
- Do not use in high temperatures or extreme weather.
- Do not use chemical detergents to clean your device, use a soft dry cloth.

SAVE THESE INSTRUCTIONS

Page Turner Model: KPTR2 USB-C Input: 5V _ 1A
Remote - FCC ID: 2A023-KPTR2 Model: KPTR2 USB-C Input: 5V _ 1A Made in China

This device complies with part 15 of the FCC Rules. Operation is subject to the following two conditions: 1) This device may not cause harmful interference, and 2) this device must accept any interference received, including interference that may cause undesired operation. Warning: Changes or modifications to this unit not expressly approved by the party responsible for compliance could void the user's authority to operate the equipment.

NOTE: This equipment has been tested and found to comply with the limits for a Class B digital device, pursuant to Part 15 of the FCC Rules. These limits are designed to provide reasonable protection against harmful interference in a residential installation. This equipment generates, uses and can radiate radio frequency energy and, if not installed and used in accordance with the instructions, may cause harmful interference to radio communications.

However, there is no guarantee that interference will not occur in a particular installation. If this equipment does cause harmful interference to radio or television reception, which can be determined by turning the equipment off and on, the user is encouraged to try to correct the interference by one or more of the following measures:

- Reorient or relocate the receiving antenna.
- Increase the separation between the equipment and receiver.
- Connect the equipment into an outlet on a circuit different from that to which the receiver is connected.
- Consult the dealer or an experienced radio/TV technician for help.

The device has been evaluated to meet general RF exposure requirements. The device can be used in portable exposure conditions without restriction.

gemsfindyours.com 7157 Shady Oak RD, Eden Prairie, MN 55344 Distributed by Chug, Inc.

For qualified repair specialists requesting repair information and parts please contact the original manufacturer at customersupport@gemsfindyours.com



FRONT

BACK