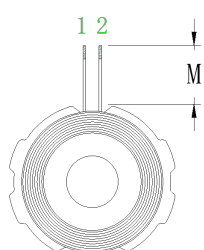
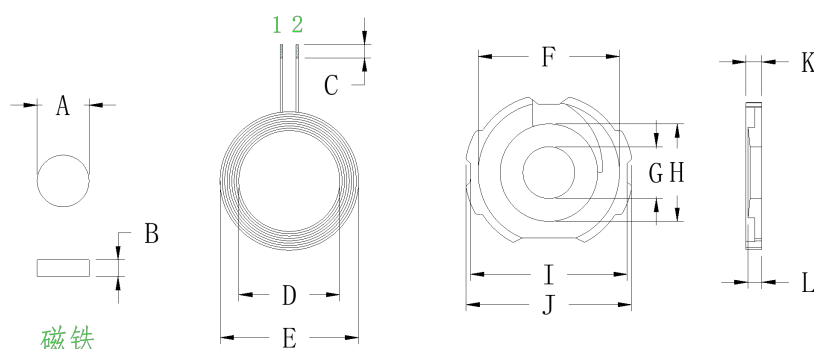


## 1、Plane structure diagram: Unit :MM



A	$7.7 \pm 0.05$
B	$2.0 \pm 0.05$
C	$2 \pm 1$
D	$15 \pm 0.2$
E	$20.5 \pm 0.5$
F	$21 \pm 0.1$
G	$7.7 \pm 0.05$
H	$13.5 \pm 0.1$
I	$23.5 \pm 0.2$
J	$25 \pm 0.2$
K	$2.55 \pm 0.1$
L	$2.25 \pm 0.1$
M	$8 \pm 1$

## 2. Product parameters:

foot position	Wire diameter	number of turns	remark
1 - 2	0.08*24P	12	Hot air stranding wire

## 3. Technical requirements:

- Secure the cable end to prevent loose cables
- According to customer requirements, the long thread is cut and tinned, and the tinning depth is  $2 \pm 1$ MM
- Point the appropriate white glue on the soft magnetic sheet, paste the coil, and ensure that the product surface is clean and tidy in the process
- The soft magnetic sheet used is with round holes, without damage
- Additional process (according to customer requirements) : Install 7.7x2.0mm magnet in the middle of the finished product round hole and in the finished product Put 14mm circular double-sided tape on the back and pack it after

## 4. electrical parameters:

$$\text{PIN } 1 - 2 = 7.6\mu\text{H} \pm 0.2\mu\text{H}$$

## 1. Inductance value, Q value:

$$Q \geq 35$$

Quasi or equivalent instrument.

Q value is based on Quanhua 1062A instrument,  
100KHZ/0.3Vrms as the standard or equivalent instrument

Dongguan city DFL Electronic Technology Co., LTD  
No. 107, Xinfeng West Road, Shijie Town, Dongguan City