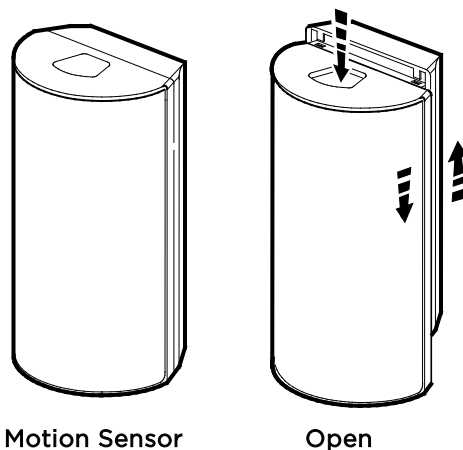
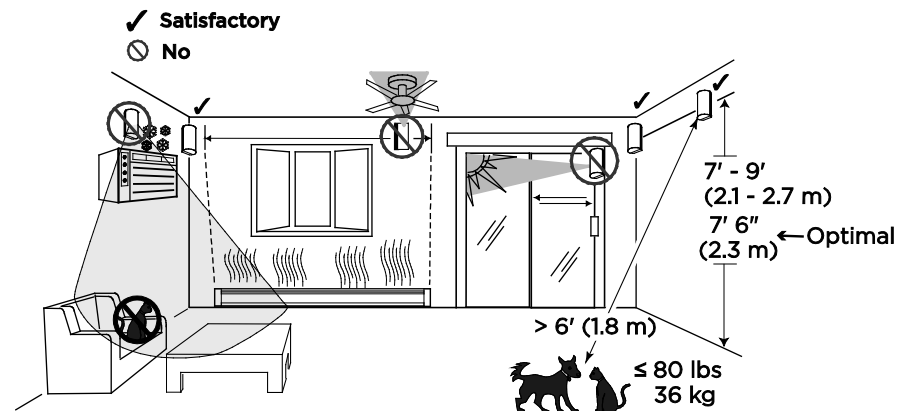


This wireless passive infrared motion sensor is intended for use with Honeywell controls that support SiX™ series devices.



Motion Sensor

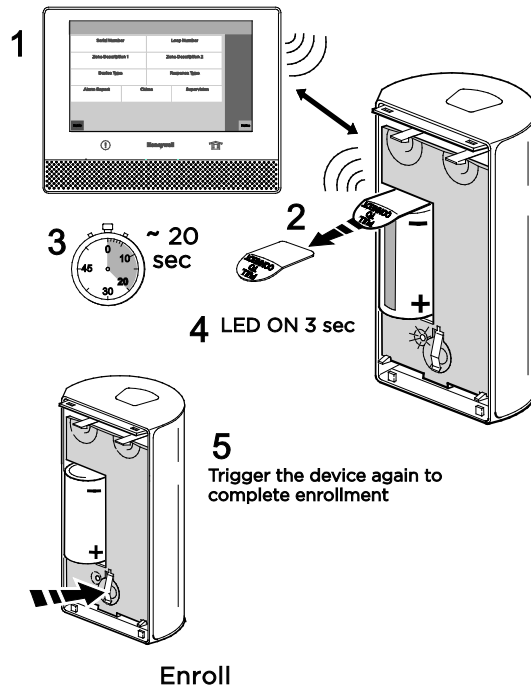
Open



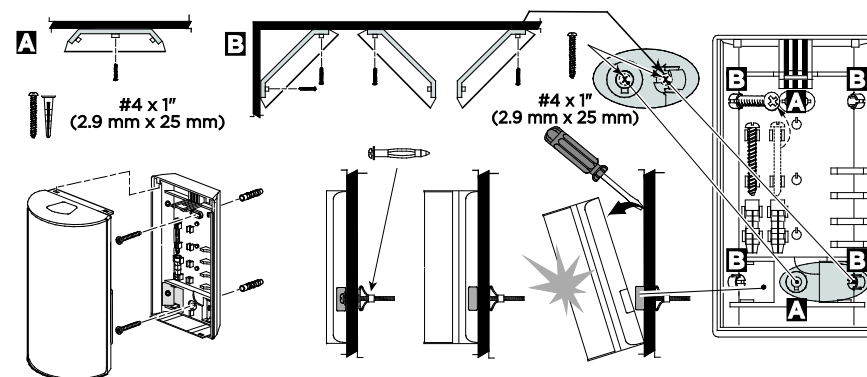
Mounting Locations

NOTE: Once enrolled, the sensor cannot be used with another system until it is removed from the current controller. See the controller's instructions.

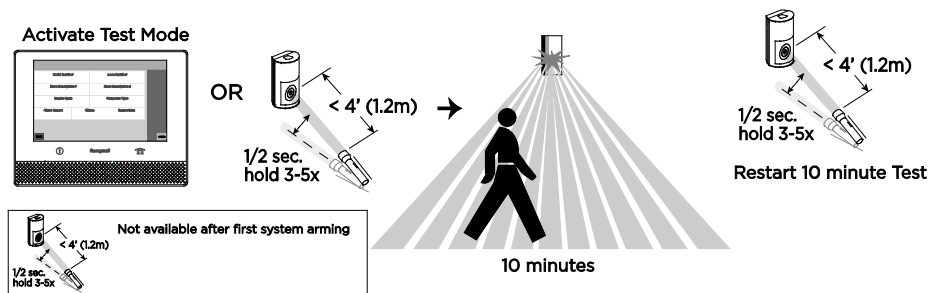
Programming Mode > Zones >
Add New > Serial Number



NOTE: After enrolling and before mounting permanently, conduct Go/No Go tests (see controller's instructions) to verify adequate signal strength. Adjust the device location and orientation as necessary.

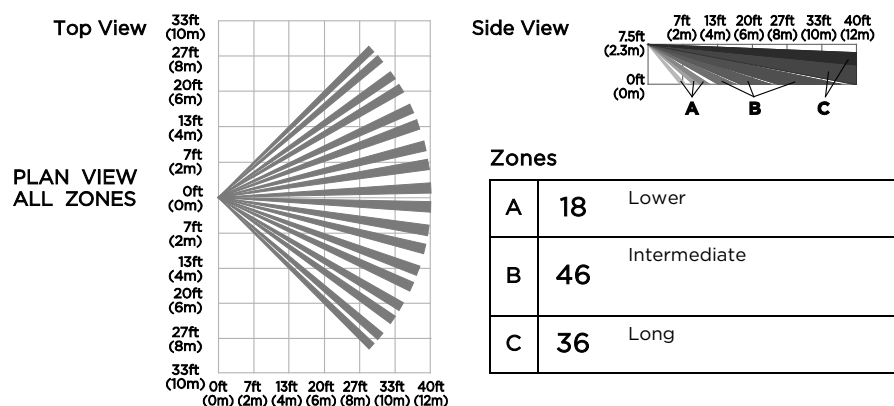


Mounting Options



Walk Test

NOTE: Before using Test Mode, the device must first be enrolled in the controller.



Detection Patterns

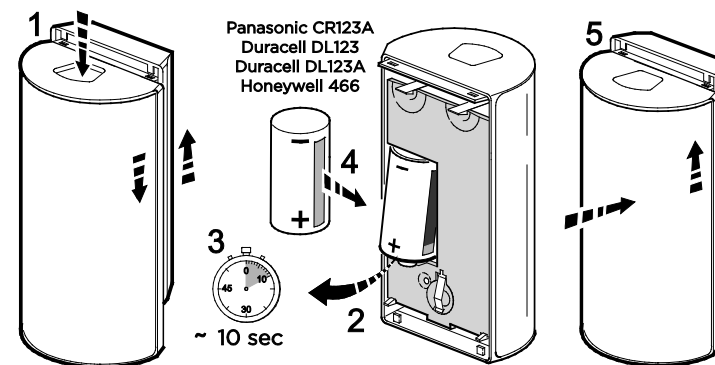
Approval Listings:

FCC / IC
SIA-PIR-01
ETL Listed to UL639
cETL Listed to ULC S306-03
RoHS

Specifications:

Range: 40' x 56' / 12 m x 17 m
Wall Mounting Height: 7' - 9' (2.1 m - 2.7 m); Optimal 7'6" (2.3 m)
Battery: 1 x 3V, Lithium; Panasonic CR123A, Duracell DL 123A, Duracell DL 123, Honeywell 466
RF Frequency: 2.4GHz
Tamper: Cover and Wall - reported separately to panel.
Operating Temperature: 32° - 122° F / 0° - 50° C (Agency Compliance 32° - 120° F / 0° - 49° C)
Relative Humidity: 95% max. (Agency Compliance - 93% max.), non-condensing
Dimensions: 4.13" H x 2.38" W x 1.61" D / 105 mm H x 60.4 mm W x 41 mm D

Product must be tested at least once each year / Le fonctionnement du produit doit être vérifié au moins une fois par année / El producto debe ser probado al menos una vez al año / O produto deve ser testado pelo menos uma vez por ano



Replace Battery

NOTE: To conserve battery life, the sensor is active only when the system is armed.

BATTERY CAUTION: Risk of fire, explosion and burns. Do not recharge, disassemble, heat above 212° F (100° C) or incinerate. Dispose of used batteries properly. Keep away from children.

FEDERAL COMMUNICATIONS COMMISSION & INDUSTRY CANADA STATEMENTS

The user shall not make any changes or modifications to the equipment unless authorized by the Installation Instructions or User's Manual. Unauthorized changes or modifications could void the user's authority to operate the equipment.

FCC / IC STATEMENT

This device complies with Part 15 of the FCC Rules, and RSS-210 of Industry Canada. Operation is subject to the following two conditions: (1) This device may not cause harmful interference, and (2) This device must accept any interference received, including interference that may cause undesired operation.

Cet appareil est conforme à la partie 15 des règles de la FCC & de RSS-210 des Industries Canada. Son fonctionnement est soumis aux conditions suivantes: (1) Cet appareil ne doit pas causer d'interférences nuisibles. (2) Cet appareil doit accepter toute interférence reçue y compris les interférences causant une réception indésirable.

RF Exposure Warning - The antenna(s) used for this device must be installed to provide a separation distance of at least 7.8 inches (20 cm) from all persons and must not be co-located or operating in conjunction with any other antenna or transmitter except in accordance with FCC multi-transmitter product procedures.

Mise en Garde Exposition aux Fréquences Radio: L'antenne (s) utilisée pour cet émetteur doit être installée à une distance de séparation d'au moins 7,8 pouces (20 cm) de toutes les personnes.

REFER TO THE INSTALLATION INSTRUCTIONS FOR THE CONTROL WITH WHICH THIS DEVICE IS USED, FOR DETAILS REGARDING LIMITATIONS OF THE ENTIRE ALARM SYSTEM.

Support

<https://mywebtech.honeywell.com/>

U.S. warranty

www.honeywell.com/security/hsc/resources/wa



MyWebTech



Warranty

